

Expertise

Protocol number: 45899385
Order No. / Reference: 26482220
Inspection date: 11 Jun 2026

Manufacturer: Audi

Model: Q3 40 TFSI Sportback quattro S tronic

VIN: WAUZZZF38R1028359



Vehicle details

Manufacturer / Type / Model / Equipment

Audi Q3 40 TFSI Sportback quattro S tronic

Vehicle Identification number WAUZZZF38R1028359

Mileage (Read) 35,771 km

First registration 21 Sept 2023

Number of holders 1

Power / Engine displacement 140 kw / 1,984 ccm

Fuel type / Cylinder Petrol / 4

Gearbox / Number of gears Automatic / 7

Type of drive All-wheel drive

Type of vehicle SUV

Colour / colour code tautilber-metallic (X7E)

Doors / Seats 5 / 5

Upholstery type Cloth / leather combination

Colour of upholstery Grey



Vehicle details

Maintenance booklet / proof	digital proof / complete	Next maintenance in	23,300 km
Last service on / at	11/2025 at 29,517 km		
Key is / should be	2 / 2	FZG documents	ZB#2 (B) was available (copy), ZB#1 (S) was not available.
		Letter No.	GY215430
Previous damage / Accident	None detectable	Repainting	None detectable
Inspection conditions	sufficient	Lifting equipment / pit	yes
Test drive	Not performed	Engine function test	Performed
Manufacturer key number/ type code number	0588 / BUA 01814		
Emission standard	EURO6;WLTP;AP;PI/CI; M, N1 I	fine dust sticker	
Permitted total weight	2,190 kg	Empty weight	

Tyres

Mounted tyres

#	Tyre size	Type of tyre	Manufacturer	Tread depth
1)	255/40 R20 101Y	Summer tyres on Light alloy	Hankook	4mm / 4mm
2)	255/40 R20 101Y	Summer tyres on Light alloy	Hankook	5mm / 5mm

Replacement

Typ	Tyre size	Type of tyre	Manufacturer	Tread depth
	Tirefit	Expiration date 07/2027		

Legend: Tread depth information for the left tire is listed first, for the right tire it is listed second on the axle in the direction of travel.



Equipment

Standard equipment

- Airbag for driver and front passenger
 - All-wheel drive "quattro"
 - Audi connect Emergency Call & Service
 - Audi drive select
 - Audi pre sense front
 - third brake light
 - Door sills with plastic inserts
 - Electromechanical parking brake
 - Chassis: Sport chassis
 - front and rear floor mats
 - Legal emergency number
 - Heated rear window
 - Electrically operated child safety lock
 - Headrests (5) front and rear
 - Light/rain sensor
 - Progressive steering
 - Wheel: Tire repair kit
 - rear seat plus
 - Lane change warning
 - Front/rear bumpers and underride protection
 - Glazing: Windscreen in heat-insulating and acoustic glazing
- Airbag: Front side airbags and head airbag system
 - Anti-lock braking system (ABS)
 - Audi connect Remote & Control
 - Audi pre sense basic
 - Hill start assist
 - Digital instrument cluster - fully digital instrument cluster in 10.25 inches
 - Electronic Stability Control (ESC)
 - Electric windows front and rear
 - Adjustable speed limiter
 - Transmission: S tronic 7-speed
 - rear window wiper
 - ISOFIX child seat attachment and Top Tether for the outer rear seats
 - Otto particulate filter
 - Wheel: Tire pressure monitoring system
 - Radio: MMI Radio plus
 - Lane Departure Warning
 - Start-stop system with recuperation
 - Phone: Bluetooth interface
 - Electronic immobilizer
 - Central locking



Extra equipment

- Electrically adjustable, heated and folding exterior mirrors (including curb view function for passenger-side exterior mirror with integrated LED indicator light, including heated windscreen washer nozzles; the curb view function folds the passenger-side mirror down when reverse gear is engaged, giving the driver a better view of the curb)
- Deletion of model designation and performance/technology lettering
- Cruise control (maintains the individually set speed between 20 and 250 km/h, provided the engine power allows. It is operated via a separate steering column stalk. The set speed is displayed on the screen. The system does not react to vehicles ahead with adaptive cruise control.)
- Comfort center armrest in front (adjustable in tilt, movable in length)
- Paint finish: Tausilber Metallic
- LED headlights with LED taillights with dynamic turn signals (functions include: daytime running lights, low beam, high beam (from MY20), position lights, turn signals, cornering lights, all-weather lights, motorway lights (extended range at high speeds), maneuvering lights (illumination of the swivel area when reversing), static cornering lights, automatic dynamic headlight range control, intersection lights (only with MMI Navigation plus), turn signals, brake lights, tail lights, reversing lights and rear license plate lights in LED technology)
- Assistance Package (Lane Change Warning deactivation) (Adaptive Cruise Control (combines adaptive cruise control with lane keeping assist) - Emergency Assist (Lane Departure Warning. If the driver does not react, the system takes over control of the vehicle and automatically brings it to a stop in its lane; the hazard warning lights are activated.) - High Beam Assist - Parking Assist Plus)
- Interior design selection package (sports seats in front - seat upholstery in Syntax fabric/mono.pur 550 synthetic leather combination including contrast stitching - leather steering wheel in 3-spoke design with multifunction plus - ambient lighting package plus - dark aluminum inlay - accent surfaces in fine lacquer Ferrumgrau Metallic - aluminum look in the interior - illuminated door sill trims with aluminum inlays at the front - interior elements in interior color - front and rear floor mats - rear bench seat plus with center armrest and cupholder)
- Seat covers in leather/artificial leather mono.pur 550 combination with microfiber pandogrey/steelgrey design selection (seat center section of the front and both outer rear seats in leather pandogrey or steelgrey - inner seat side bolsters in microfiber steelgrey - outer seat bolsters, middle rear seat and comfort center armrest in front (if ordered) in artificial leather mono.pur 550 pandogrey/steelgrey - accent stripes on the seat in leather pandogrey/moonsilver - contrast stitching in rockgrey/silver)
- Glazing: Sun protection glazing, tinted (rear window, rear door and side windows tinted)
- Winter complete wheels - black
- Exterior mirror housings in black
- Black fabric headliner
- Decorative inlays aluminum dimension dark
- Parking aid plus (supports the driver with acoustic signals and a display in the MMI when parking and maneuvering. The parking aid is activated by engaging reverse gear or via a button in the center console, or automatically when the distance to a detected object is less than 90 cm. Automatic activation can be switched on and off.)
- Hold assist (holds the vehicle indefinitely after stopping on inclines and declines typical in road traffic.)
- 2-zone automatic climate control (electronically regulates air temperature, volume and distribution - separate temperature distribution for driver and front passenger side - sun position-dependent control - automatic recirculation control via air quality sensor - dust and odor separating allergen filter - air vents in the rear center console - separate defroster button for faster defrosting of the front and side windows)
- Steering wheel: Leather steering wheel in a 3-spoke design with multifunction plus (The steering wheel impresses with its high-quality look and aluminum trim and feels good in the hand. Height and reach of the steering wheel are manually adjustable. For convenient operation of the extensive standard and optional infotainment features, the steering wheel is equipped with 12 multifunction buttons.)
- Business package in conjunction with interior S line or design selection (MMI Navigation plus - leather steering wheel in 3-spoke design with multifunction plus - Audi virtual cockpit plus - Audi phone box - Audi connect Navigation & Infotainment plus - cruise control)
- Dynamic package (Sportback) (Adaptive suspension - Sound actuator - Decorative foil Audi rings on the sides in platinum grey - Brake calipers painted red (only for Q3 40 TDI and 45 TFSI))
- Black Optics Package (adds black accents to the exterior in the area of the Audi Singleframe grille, the trim strips on the side windows, and the front and rear bumpers. Design varies depending on the model and equipment. The roof rails are finished in black.)
- Wheel: Audi new car tire warranty (36-month term from vehicle handover to the first customer)
- Wheel: Audi Sport light alloy wheels in 5-V-spoke star design, titanium grey matt (8.5 J × 20 with tires 255/40 R 20 gloss turned)
- Seats: 4-way lumbar support (electrically adjustable, horizontally and vertically)
- Seats: Driver's seat electrically adjustable (with electric adjustment of seat height, seat longitudinal position, seat tilt and backrest tilt for the driver's seat - passenger seat manually adjustable)
- Front seat heating (heats seat and backrest center section for standard seats, otherwise seat and backrest center section as well as seat side bolsters - individually adjustable in 3 stages for driver and front passenger via direct selection button on the climate control unit)



Brief expert findings

Documents submitted	At the time of the inspection, the vehicle registration certificate Part 2 (title) was available, but the vehicle registration certificate Part 1 (document) was not. (Copy)
VIN comparison	The vehicle identification number (VIN) was read from the vehicle and its conformity with the submitted documents was confirmed by the undersigned during the inspection.
Inspection	The inspection conditions were sufficient for the assessment of the vehicle. Lifting equipment and/or a pit were available for examining the vehicle.
Test drive	No test drive/shunting maneuver was carried out during the inspection of the vehicle.
Engine function test	An engine test run was performed.

Value reducing factors

No.	Component group	Description
1	Bonnet	Insulation lining - Damage caused by marten / rodent - Replace
2	Front bumper	Front bumper - Scratch(es) - Smart repair

Missing parts

Description

2nd wheel set - 2nd wheel set (Winterräder)

Order/Scope of Order

An order was placed to prepare a sales report for the described vehicle. This report includes the following:

- Description of key vehicle information
- Documentation of equipment features
(*Delivery by third-party service providers*)
- Documentation of damage, defects, missing parts
- Documentation of prior damage, unrepaired prior damage, repainting
- A brief visual or functional inspection of the equipment details, if possible.
(*Functional testing of driver assistance systems is not included in the scope of services!*)
- a photographic documentation of the vehicle

Basis for the order

This product is based on the guidelines for vehicle returns and valuations published by Alphabet Fleet GmbH. The expert makes the specific findings in each individual case objectively, within the framework of the prescribed standards, based on their own expertise.

The vehicle inspection takes place in a fully assembled, unassembled state.

Damage or defects that can only be detected during disassembly/diagnostic work or through further investigation remain within the realm of prognostic risk. An increased risk exists due to concealed defects caused by fraudulent misrepresentation and which were not identifiable by the expert.

Damage or defects resulting from normal use or wear and tear of the vehicle will be accepted in accordance with the applicable standard.

There was no explicit identification or monetary consideration of the expected features within the product.

Features which, in their nature and extent, slightly exceed normal use but do not constitute unacceptable damage, will be documented and indicated as signs of wear, if applicable.

Damage or defects that, according to the applicable standard, can no longer be attributed to normal use or wear and tear are listed under "Value Reducing Factors" in the product description.

Depending on the product specification, a monetary ID can be provided. If this takes place, the costs can be 100% d or pro rata depending on the vehicle's age and mileage.



Previous damages

No apparent prior damage that had been repaired could be found on the vehicle.



Figure 1: Diagonal front (left)



Figure 2: Diagonal front (right)



Figure 3: Diagonal rear (left)



Figure 4: Diagonal rear (right)

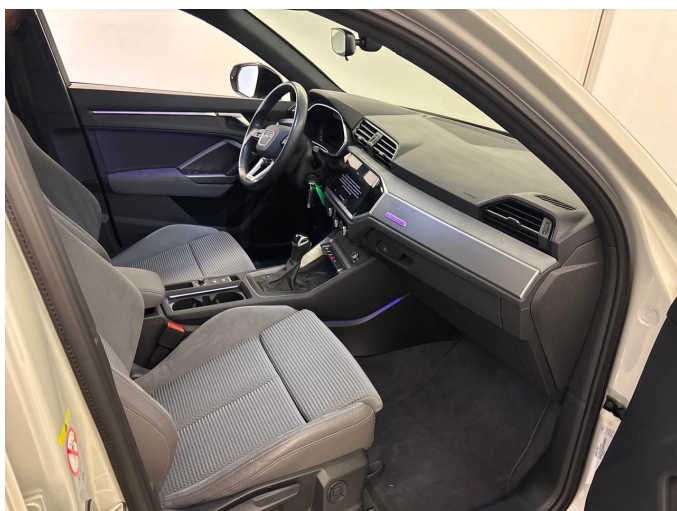


Figure 5: Interior - front

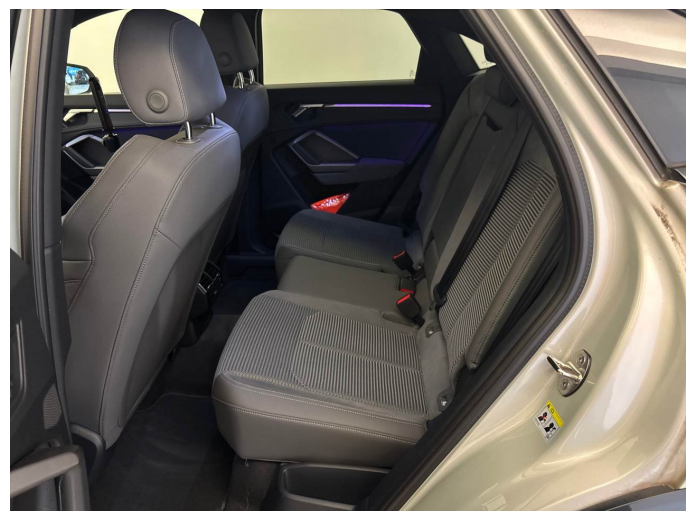


Figure 6: Interior - rear



Figure 7: Instrument cluster



Figure 8: Instrument panel



Figure 9: Interior 360° view



Figure 10: Cargo area

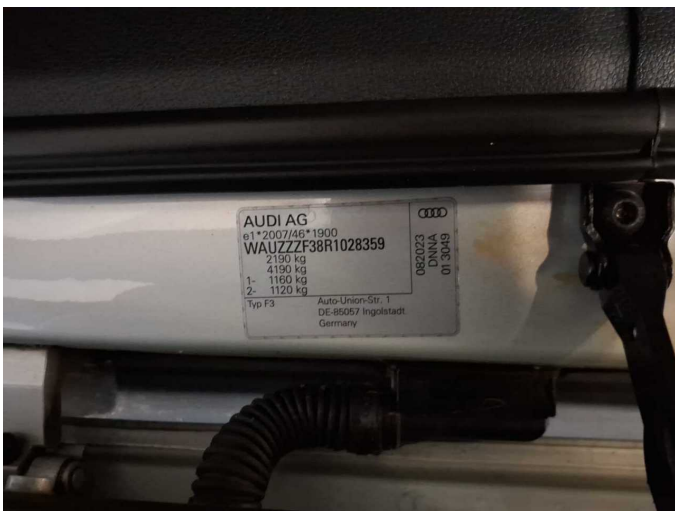


Figure 11: VIN



Figure 12: Mounted tyres



Figure 13: Documents



Figure 14: Navigation



Figure 15: Misc.



Figure 16: Misc.



Figure 17: Misc.



Figure 18: Misc.



Figure 19: Misc.



Figure 20: Misc.



Figure 21: Misc.



Figure 22: Misc.



Figure 23: Misc.



Figure 24: Misc.



Figure 25: Misc.



Figure 26: Misc.



Figure 27: Misc.



Figure 28: Misc.

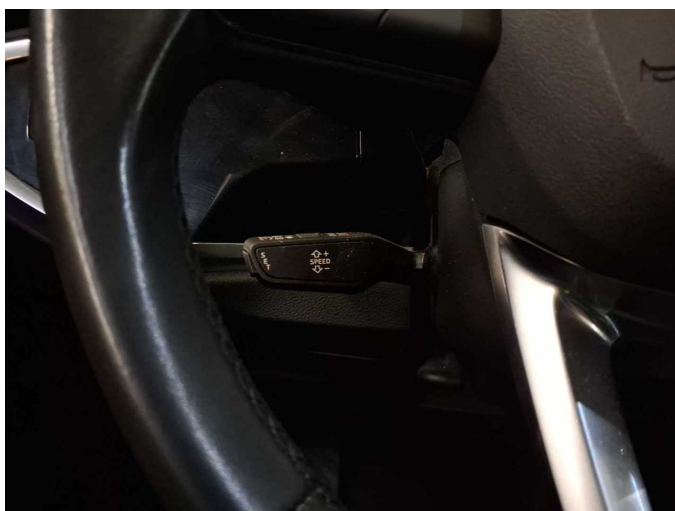


Figure 29: Misc.



Damage 1: Bonnet: Insulation lining - Damage caused by marten / rodent - Replace



Damage 2: Front bumper: Front bumper - Scratch(es) - Smart repair



Damage 2: Front bumper: Front bumper - Scratch(es) - Smart repair



Wartungshistorie

(gemäß Auftraggeber Informationen)

Fahrgestellnummer: WAUZZZF38R1028359

Hersteller / Modell: AUDI AUDI Q3 40 TFSI Sportback quattro S tronic

Datum	KM-Stand	Beschreibung
10.11.2025	29.517	Bremsflüssigkeit; Bremsflüssigkeit ern; Motoröl b. Wartung; Ölfilter ern; Regelwartungsdienst; Systemtest/Eigendiagnose; Wartung Sonstiges; Wartung Sonstiges