

Expertise

Protocol number: 46025440
Order No. / Reference: 26500650
Inspection date: 17 Jun 2026

Manufacturer: Mercedes-Benz

Model: C 300 e T 9G-TRONIC AMG Line

VIN: W1KAH5EB4PF094014



Vehicle details

Manufacturer / Type / Model / Equipment

Mercedes-Benz C 300 e T 9G-TRONIC AMG Line

Vehicle Identification number W1KAH5EB4PF094014

Mileage (Read) 92,580 km

First registration 26 Apr 2023

Number of holders 1

Power / Engine displacement 150 kw / 1,999 ccm

Fuel type / Cylinder Hybr.B/E ext.auf1 / 4

Gearbox / Number of gears Automatic / 9

Type of drive Rear drive

Type of vehicle Station wagon

Colour / colour code SELENITGRAU -
METALLIKLACK

Doors / Seats 5 / 5

Upholstery type Leather

Colour of upholstery Black



Vehicle details

Maintenance booklet / proof	Non-existent	Next maintenance in	201 Tag(e)
Key is / should be	2 / 2	FZG documents	ZB#2 (B) was available (copy), ZB#1 (S) was not available.
		Letter No.	GS693539
Previous damage / Accident	None detectable	Repainting	None detectable
Inspection conditions	sufficient	Lifting equipment / pit	No
Test drive	Not performed	Engine function test	Performed
Manufacturer key number/ type code number	2222 / BEP 00071		
Emission standard	EURO6;WLTP;AP;PI/CI; M, N1 I	fine dust sticker	
Permitted total weight	2,655 kg	Empty weight	

Tyres

Mounted tyres

#	Tyre size	Type of tyre	Manufacturer	Tread depth
1)	225/45 R18 95Y	Summer tyres on Light alloy	Continental	5mm / 5mm
2)	255/40 R18 99Y	Summer tyres on Light alloy	Kumho	5mm / 5mm

Additional tyres

#	Tyre size	Type of tyre	Manufacturer	Tread depth
1)	225/45 R18 95V	Winter tyres on Light alloy	Nokian	5mm / 5mm
2)	255/40 R18 99V	Winter tyres on Light alloy	Nokian	6mm / 6mm

Legend: Tread depth information for the left tire is listed first, for the right tire it is listed second on the axle in the direction of travel.



Equipment

Standard equipment

- Airbag for driver and front passenger
- Airbag: Center airbag
- Airbag: Windowbag for driver and front passenger
- Ambient lighting with 64 light colors
- AMG sports pedal assembly made of brushed stainless steel with rubber studs
- Basic services
- black roof rails
- DYNAMIC SELECT
- ECO start/stop function
- Electric windows (4-way)
- Transmission: 9-speed automatic, 9G-TRONIC
- Heated rear window
- Instrument panel and door sills in ARTICO man-made leather in black nappa look
- Mechanical child safety lock for the rear doors
- Rear headrests (3)
- Paint finish: Solid
- Cargo area cover including EASY-PACK safety net
- LED High Performance Headlights
- Mercedes-Benz emergency call system
- Center console in high-gloss black
- Package: Storage
- Package: Park
- Radio: Extended MBUX functions
- Radio accessories: Digital radio (DAB)
- Radio accessories: Central display
- Tire pressure monitoring system (TPMS)
- Wheels: 45.7 cm (18") AMG light-alloy wheels in a 5-spoke design
- Lane Keeping Assist, active
- High-visibility vest for drivers
- Central locking with remote control
- Airbag: Automatic passenger airbag deactivation
- Airbag: Side airbag for driver and front passenger
- Acoustic environmental protection
- AMG floor mats
- Left and right exterior mirrors are heated and electrically adjustable
- Brake assist, active
- Double cup holder at the front
- EASY-PACK tailgate
- Electronic Stability Program (ESP)
- Speed Limit Assistant
- rear window wiper
- Interior headliner fabric crystal grey
- ISOFIX child seat attachment with top tether in the rear
- KEYLESS-GO start function
- THERMATIC automatic climate control with 2 climate zones
- Front headrests
- Charging cable for household socket, 5m, smooth
- Charging system: AC charging system 11kW
- Steering wheel: Multifunction sports steering wheel in Nappa leather
- Otto particulate filter
- Package: Interior lighting package
- Upholstery: ARTICO leatherette/MICROCUT microfiber
- Radio: MBUX
- Radio accessories: Communication module (LTE) for using Mercedes me connect services
- Remote Services Plus
- Windscreen wipers with rain sensor
- Seats: Rear seat backrests foldable
- Cruise control
- Electronic immobilizer
- Decorative elements, metal structure



Extra equipment

- Ambient lighting with 64 light colors (with directly illuminated light lines.)
- ENERGIZING AIR CONTROL (Air quality sensor and one fine dust sensor each for indoor and outdoor use - Fine dust filtration with 2 filters - Activated carbon-based indoor air filter with filter layers against fine dust (PM2.5) and nitrogen oxides (NOx) or sulfur dioxides (SO2) as well as pollen - Automatic recirculation or fresh air switching depending on the measured air quality, taking into account the overall climate comfort control system - Air quality menu in the MBUX multimedia system to illustrate the measured values)
- Paint finish: Metallic
- Charging cable for wallbox and public charging station, 5m, smooth 11kW (This charging cable, also called Mode 3 cable, allows you to charge the vehicle battery at the wallbox or at public charging stations with up to 11 kW (Type 2, 3-phase, 16 A).)
- Steering wheel: Steering wheel heating
- Center console diamond pattern silver grey
- Package: Advanced Parking Package (12 ultrasonic sensors - 360° camera - Active Parking Assist with PARKTRONIC: detects free parking spaces, assisted parking, visual and acoustic warning, display of camera and ultrasonic data in the media display - Cross traffic warning: can provide visual and acoustic warnings when reversing out of a parking space and, if necessary, automatically initiate emergency braking - Reverse maneuvering brake: can trigger a braking process - Drive-away assist)
- Package: High-End Infotainment Package (MBUX Navigation Premium (hard drive navigation, pre-installation for Live Traffic Information), Traffic Sign Assist, Smartphone Integration (connects the mobile phone wirelessly to the multimedia system via Apple CarPlay and Android Auto), Wireless charging system for mobile devices in the front, Driver display - 31.2 cm (12.3") color LCD display, Central display - 30.2 cm (11.9") touch display, MBUX Augmented Reality for navigation.)
- Package: High-End Light Package (DIGITAL LIGHT with projection function: -HD system with projection module -DIGITAL LIGHT projection functions: projection function for lines, symbols, animations -ULTRA RANGE high beam with a range of more than 600 m -Topography compensation -Curving light with roundabout and intersection function -Active curve light with predictive control -Extended fog light, city light, country road light, motorway light, motorway high beam and bad weather light)
- Package: Night (300e Estate with AMG Line Exterior) (Radiator grille: Diamond grille with silver pins and high-gloss black louvre (18") AMG light-alloy wheels in 5-spoke design, aerodynamically optimized, black painted, high-sheen finish, with front axle 225/45 R18 on 7.5Jx18 ET40, rear axle 255/40 R18 on 9Jx18 ET58 AMG front apron with high-gloss black wing trim. Rear bumper with high-gloss black wing trim. Belt trim strip and window surrounds in high-gloss black. Exterior mirror housings in high-gloss black. Heat-insulating dark-tinted rear glass (from the B-pillar). Roof rails in black.)
- Towbar with ESP trailer stabilization
- Business Package DB2
- Fingerprint scanner (color-illuminated fingerprint scanner in the control bar below the OLED media display - two fingerprints can be stored per user - faster access replaces PIN entry - protects personal data such as profiles as well as office and payment functions)
- Head-up display
- Black fabric headliner
- KEYLESS-GO (access and driving authorization system)
- THERMOTRONIC automatic climate control with 4 climate zones (controlled via the central display or the climate control unit in the center console, with Auto button for automatic control of temperature, air volume and air distribution - control unit on the back of the center console - automatic recirculation when a tunnel is detected via GPS, only in conjunction with navigation system - sensors for detecting e.g. inside/outside temperature - fine dust activated carbon filter - ventilation system - dew point sensors - residual heat function for efficient use of engine waste heat)
- Package: Driving Assistance Package Plus (Active Distance Assist DISTRONIC, Active Speed Limit Assist, Extended Automatic Restart on Highways, Route-Based Speed Adaptation with Traffic Jam End Function, Active Traffic Jam Assist, Active Steering Assist, Active Lane Change Assist, Active Emergency Stop Assist, Emergency Lane Function, Active Brake Assist with Vehicle, Bicycle and Pedestrian Detection; Intersection Function, Turn Function, Traffic Jam End Emergency Braking Function, Evasive Steering Assist, Active Lane Keeping Assist, Active Blind Spot Assist, PRE-SAFE Impulse Side)
- Package: High-End Comfort Package (Seat heating for driver and front passenger - Memory Package: Driver and front passenger seats, steering column and exterior mirrors electrically adjustable and storable; Seat longitudinal position and headrest height additionally electrically adjustable; 3 memory settings each for driver and front passenger; 4-way lumbar support for driver and front passenger; Seat cushion depth adjustment with gapless cushion; PRE-SAFE positioning function for the front passenger seat)
- Package: Luggage compartment comfort (electrically folding rear seat backrests via switches on the right and left in the control panel in the load compartment - electric opening and closing of the load compartment roller blind - 12V socket on the left in the control panel in the load compartment - reversible mat, with a rubberized, non-slip side and a soft velour side)
- Package: Public Charging (charging cable for wallbox and public charging stations, 5m, smooth (charging the vehicle battery at the wallbox or at public charging stations with up to 11 kW (Type 2, 3-phase, 20 A)) - Remote and Charging Services Plus)



- Upholstery: ARTICO black leatherette
- Heated windshield washer system
- Sunroof: Electric panoramic sunroof
- Seats: Multi-contour seats for driver and front passenger (driver and front passenger seats fully electrically adjustable via the switches in the door control panel - Electro-pneumatic 4-way lumbar support - Massage via 8 inflatable air chambers in the lower seat back and side bolsters as well as 7 zones - Deep tissue massage via 4 vibration elements in the seat cushion (driver's side only) - 6 massage programs for the driver, 4 massage programs for the front passenger)
- Heat and noise insulating acoustic glass (for windshield and front doors)
- Heat-insulating dark tinted glass
- Decorative elements in diamond pattern, silver-grey
- Package: Mirror package (both exterior mirrors electrically folding (button in the driver's door control panel) - interior mirror and exterior mirror on the driver's side automatically dimming continuously - ambient lighting of the exterior mirror to illuminate the entry area with projection of the Mercedes-Benz logo)
- Radio accessories: Advanced sound system (with 9 speakers and 225 watts system power)
- Seats: Comfort seats
- Seats: Heated rear seats
- Seats: Seat climate control for driver and front passenger (including seat heating and seat ventilation)
- Telephone accessories: Multifunctional telephony (Connect your mobile phone and the external antenna to work together – and benefit from improved reception. Simply place your inductively chargeable phone in the charging pad. An integrated antenna then transmits the signals to the outside. The vehicle's speakers handle the voice output. - Wireless connection of a compatible mobile phone to the external antenna - Bluetooth and Wi-Fi pairing wirelessly via NFC (Near Field Communication) technology)

Brief expert findings

Documents submitted	At the time of the inspection, the vehicle registration certificate Part 2 (title) was available, but the vehicle registration certificate Part 1 (document) was not. (Copy)
VIN comparison	The vehicle identification number (VIN) was read from the vehicle and its conformity with the submitted documents was confirmed by the undersigned during the inspection.
Inspection	The inspection conditions were sufficient for the assessment of the vehicle. No lifting equipment or pit was available for inspecting the vehicle. Therefore, inspection of the vehicle's underside was only possible to a limited extent.
Test drive	No test drive/shunting maneuver was carried out during the inspection of the vehicle.
Engine function test	An engine test run was performed.

Value reducing factors

No.	Component group	Description
1	Misc.	Inspection / maintenance - No evidence - No deduction
2	Boot lid / rear door	Boot lid - dent(s) - Smooth repair work
3	Side panel - rear left side	Sill - Scratch(es) - Smart repair
4	Roof	Cowl - right side - Broken / torn - Replace
5	Roof	Cowl - left side - Broken / torn - Replace
6	Side panel - rear left side	Side panel - Dent / paintcoat damage - Smart repair
7	Bonnet	Bonnet - Dent / paintcoat damage - Loss in value

Wear and tear

No.	Component group	Description
1	2nd wheel set	1 alloy rim - Scratch(es) - No deduction
2	Front bumper	Front bumper - Stone chips - No deduction
3	Wheel / tyres	Alloy rim - rear right side - Scratch(es) - No deduction
4	Trim / covers	Boot lid - interior trim - Scratch(es) - No deduction
5	Vehicle glazing	Windscreen - Stone chips - No deduction

The vehicle shows signs of wear and tear commensurate with its age and use.



Order/Scope of Order

An order was placed to prepare a sales report for the described vehicle. This report includes the following:

- Description of key vehicle information
- Documentation of equipment features
(Delivery by third-party service providers)
- Documentation of damage, defects, missing parts
- Documentation of prior damage, unrepaired prior damage, repainting
- A brief visual or functional inspection of the equipment details, if possible.
(Functional testing of driver assistance systems is not included in the scope of services!)
- a photographic documentation of the vehicle

Basis for the order

This product is based on the guidelines for vehicle returns and valuations published by Alphabet Fleet GmbH. The expert makes the specific findings in each individual case objectively, within the framework of the prescribed standards, based on their own expertise.

The vehicle inspection takes place in a fully assembled, unassembled state.

Damage or defects that can only be detected during disassembly/diagnostic work or through further investigation remain within the realm of prognostic risk. An increased risk exists due to concealed defects caused by fraudulent misrepresentation and which were not identifiable by the expert.

Damage or defects resulting from normal use or wear and tear of the vehicle will be accepted in accordance with the applicable standard.

There was no explicit identification or monetary consideration of the expected features within the product.

Features which, in their nature and extent, slightly exceed normal use but do not constitute unacceptable damage, will be documented and indicated as signs of wear, if applicable.

Damage or defects that, according to the applicable standard, can no longer be attributed to normal use or wear and tear are listed under "Value Reducing Factors" in the product description.

Depending on the product specification, a monetary ID can be provided. If this takes place, the costs can be 100% or pro rata depending on the vehicle's age and mileage.

Previous damages

No apparent prior damage that had been repaired could be found on the vehicle.

Comments

- Winterradsatz ist kein Bestandteil des Auslieferungsumfangs.



Figure 1: Diagonal front (left)



Figure 2: Diagonal front (right)



Figure 3: Diagonal rear (left)



Figure 4: Diagonal rear (right)



Figure 5: Interior - front



Figure 6: Interior - rear



Figure 7: Instrument cluster



Figure 8: Instrument panel



Figure 9: Interior 360° view



Figure 10: Cargo area



Figure 11: VIN



Figure 12: Mounted tyres



Figure 13: Documents



Figure 14: Additional tyres



Figure 15: Additional tyres



Figure 16: Additional tyres



Figure 17: Navigation



Figure 18: Misc.



Figure 19: Misc.



Figure 20: Misc.



Figure 21: Misc.

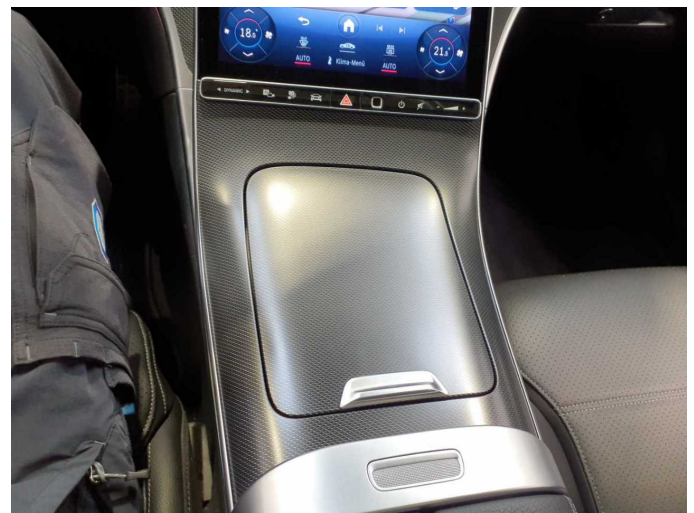


Figure 22: Misc.

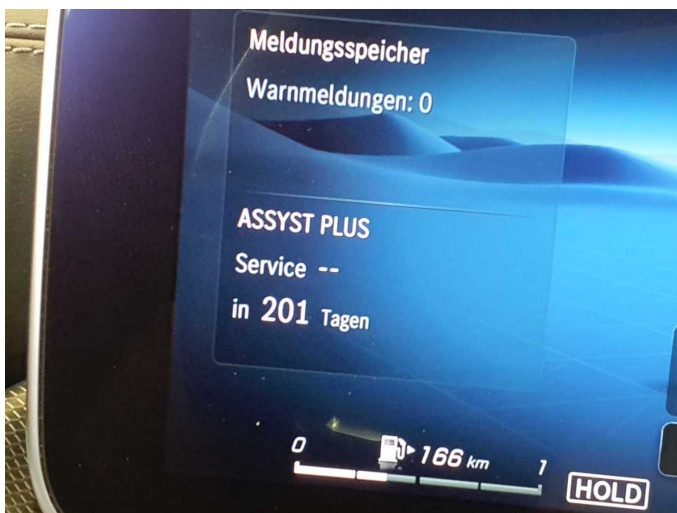


Figure 23: Misc.

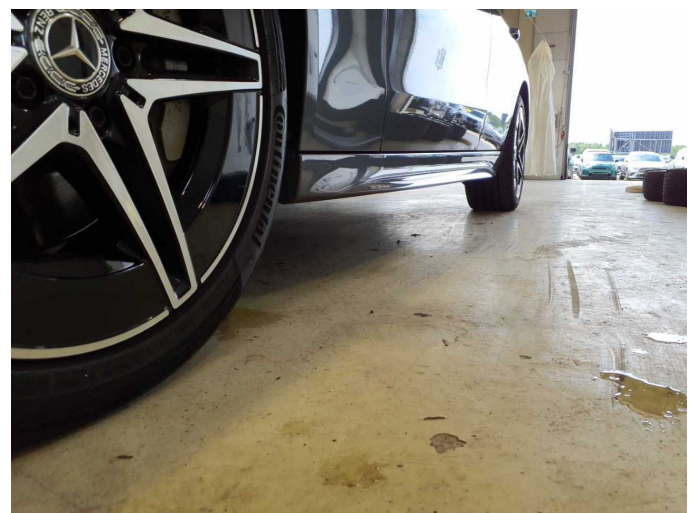


Figure 24: Misc.



Figure 25: Misc.



Figure 26: Misc.



Figure 27: Misc.

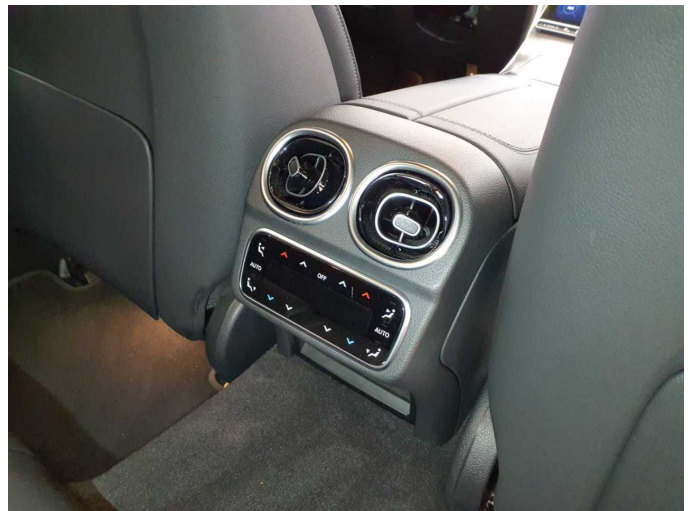


Figure 28: Misc.

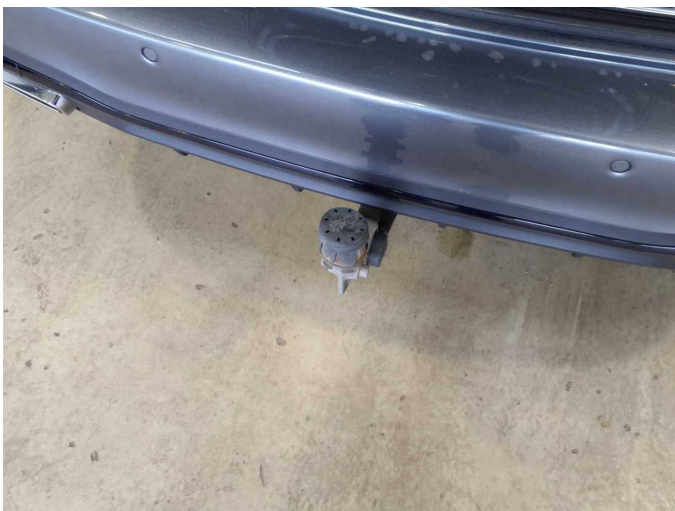


Figure 29: Misc.

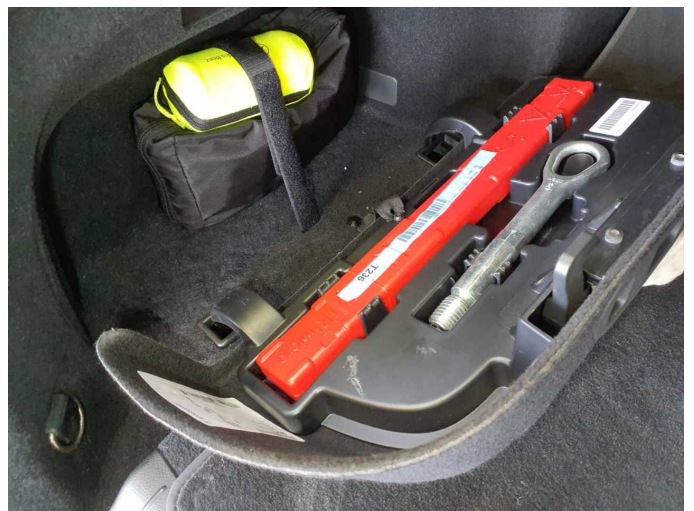


Figure 30: Misc.



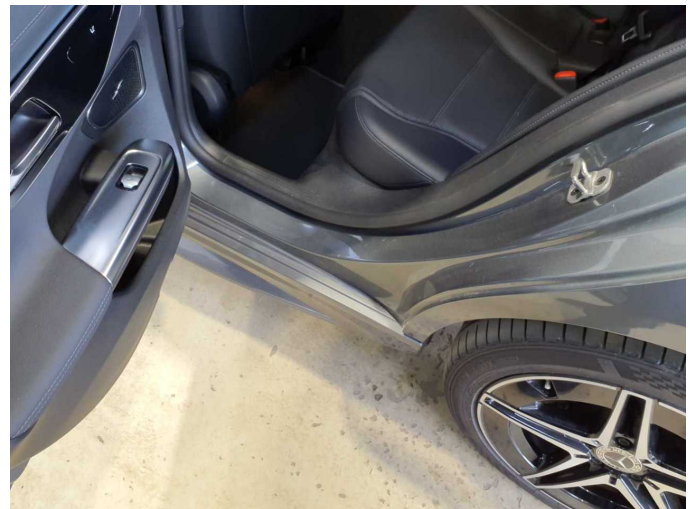
Figure 31: Misc.



Damage 2: Boot lid / rear door: Boot lid - dent(s) - Smooth repair work



Damage 2: Boot lid / rear door: Boot lid - dent(s) - Smooth repair work



Damage 3: Side panel - rear left side: Sill - Scratch(es) - Smart repair



Damage 3: Side panel - rear left side: Sill - Scratch(es) - Smart repair



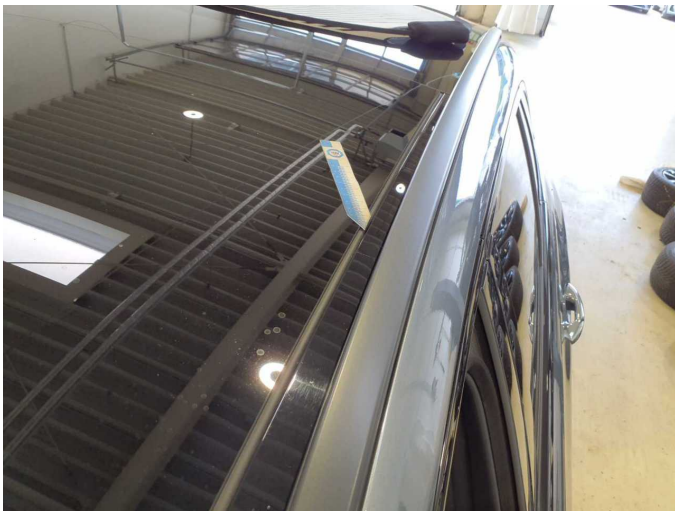
Damage 4: Roof: Cowl - right side - Broken / torn - Replace



Damage 4: Roof: Cowl - right side - Broken / torn - Replace



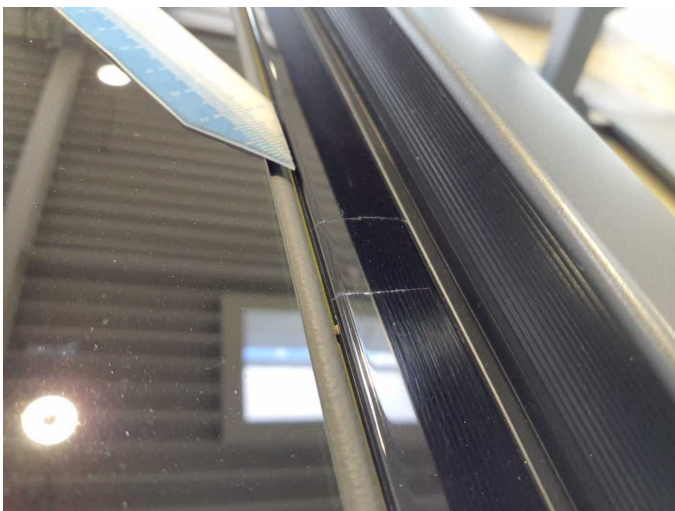
Damage 4: Roof: Cowl - right side - Broken / torn - Replace



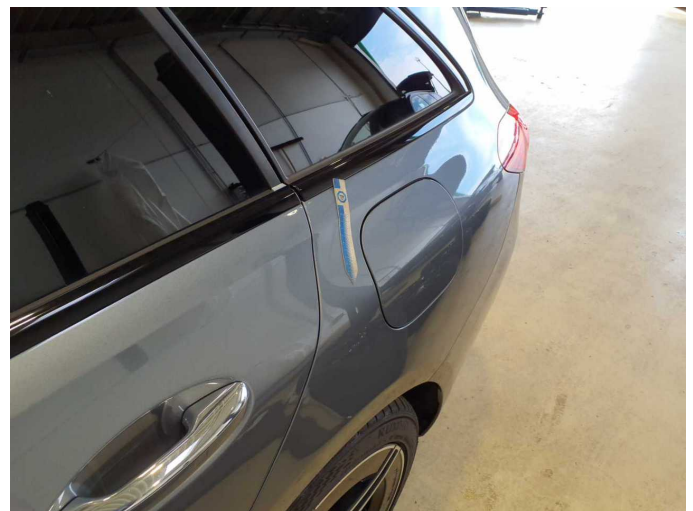
Damage 5: Roof: Cowl - left side - Broken / torn - Replace



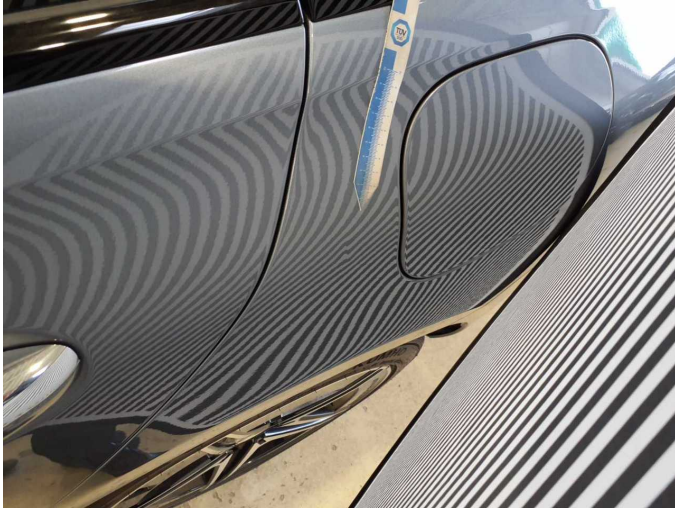
Damage 5: Roof: Cowl - left side - Broken / torn - Replace



Damage 5: Roof: Cowl - left side - Broken / torn - Replace



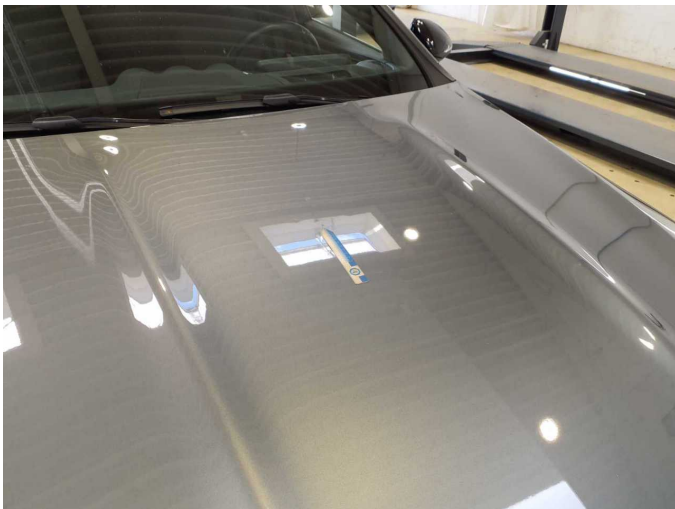
Damage 6: Side panel - rear left side: Side panel - Dent / paintcoat damage - Smart repair



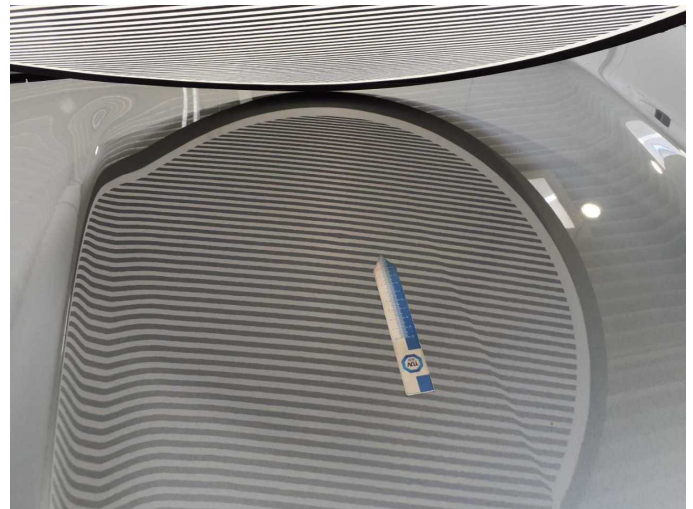
Damage 6: Side panel - rear left side: Side panel - Dent / paintcoat damage - Smart repair



Damage 6: Side panel - rear left side: Side panel - Dent / paintcoat damage - Smart repair



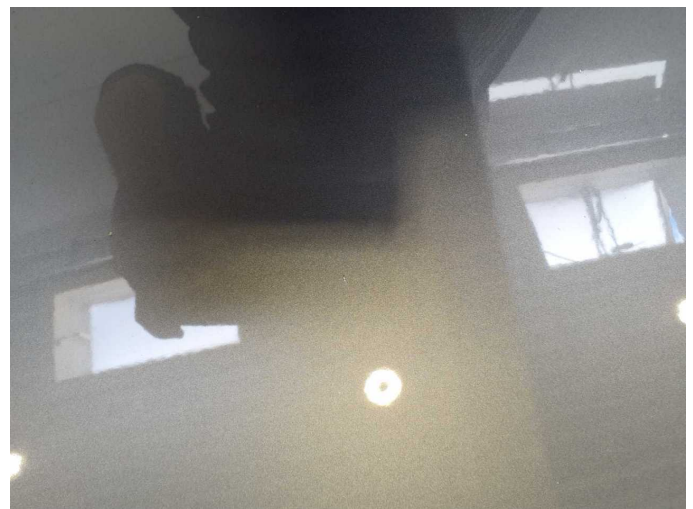
Damage 7: Bonnet: Bonnet - Dent / paintcoat damage - Loss in value



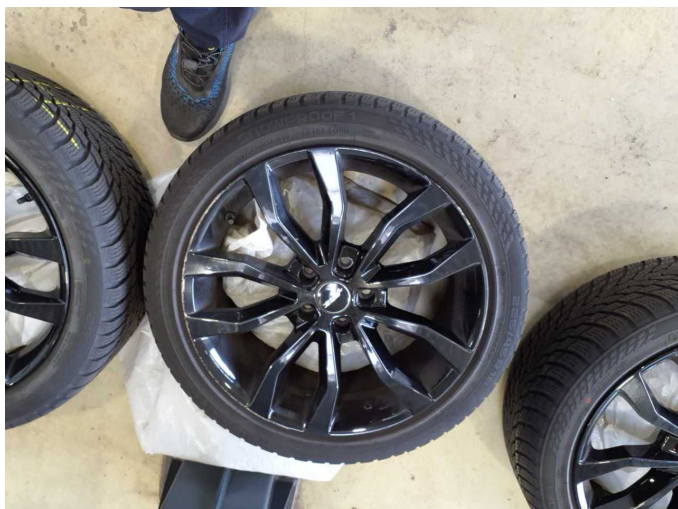
Damage 7: Bonnet: Bonnet - Dent / paintcoat damage - Loss in value



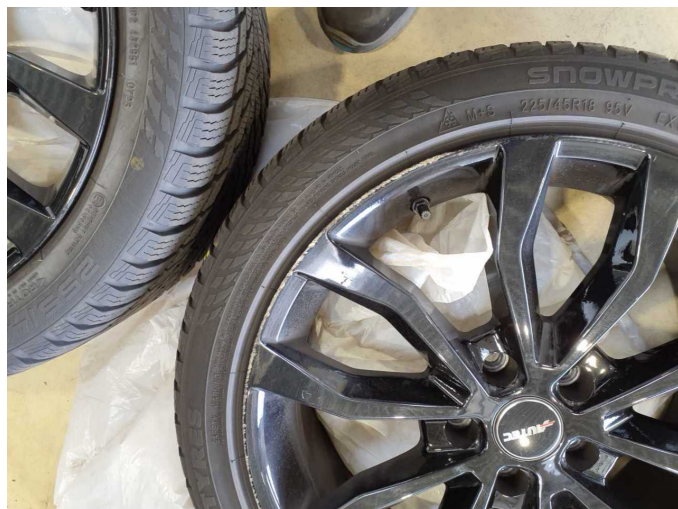
Damage 7: Bonnet: Bonnet - Dent / paintcoat damage - Loss in value



Damage 7: Bonnet: Bonnet - Dent / paintcoat damage - Loss in value



Wear and tear 1: 2nd wheel set: 1 alloy rim - Scratch(es) - No deduction



Wear and tear 1: 2nd wheel set: 1 alloy rim - Scratch(es) - No deduction