

Expertise

Protocol number: 45785285
Order No. / Reference: 26529585
Inspection date: 5 Jun 2026

Manufacturer: Ford

Model: Focus Turnier 1.5 EcoBlue Start-Stopp-System Aut. TITANIUM

VIN: WF0PXXGCHPPL83358



Vehicle details

Manufacturer / Type / Model / Equipment

Ford Focus Turnier 1.5 EcoBlue Start-Stopp-System Aut. TITANIUM

Vehicle Identification number WF0PXXGCHPPL83358

Mileage (Read) 96,992 km

First registration 8 May 2023

Number of holders 1

Power / Engine displacement 85 kw / 1,499 ccm

Fuel type / Cylinder Diesel / 4

Gearbox / Number of gears Automatic / 8

Type of drive Front drive

Type of vehicle Station wagon

Colour / colour code Chrome Blue Metallic

Doors / Seats 5 / 5

Upholstery type Cloth

Colour of upholstery Anthracite-Black

Vehicle with smoke odor no



Vehicle details			
Maintenance booklet / proof	digital proof / complete	Next maintenance in	18 %
Last service on / at	01/2026 at 84,646 km		
Key is / should be	2 / 2	FZG documents	ZB#2 (B) was available (copy), ZB#1 (S) was not available.
		Letter No.	GT913443
Previous damage / Accident	None detectable	Repainting	Detectable
Inspection conditions	sufficient	Lifting equipment / pit	yes
Test drive	short drive on the company premises	Engine function test	Performed
Manufacturer key number/ type code number	8566 / BYE 00002		
Emission standard	EURO6;WLTP;AP;PI/CI; M, N1 I	fine dust sticker	
Permitted total weight	2,035 kg	Empty weight	

Tyres

Mounted tyres				
#	Tyre size	Type of tyre	Manufacturer	Tread depth
1)	205/60 R16 96H	Winter tyres on Light alloy	Pirelli	6mm / 6mm
2)	205/60 R16 96H	Winter tyres on Light alloy	Pirelli	7mm / 7mm
Additional tyres				
#	Tyre size	Type of tyre	Manufacturer	Tread depth
1)	205/60 R16 92V	Summer tyres on Steel rim with wheel cover	Goodyear	4mm / 4mm
2)	205/60 R16 92V	Summer tyres on Steel rim with wheel cover	Goodyear	5mm / 5mm
Replacement				
Typ	Tyre size	Type of tyre	Manufacturer	Tread depth
	Tirefit	Expiration date 05/2027		

Legend: Tread depth information for the left tire is listed first, for the right tire it is listed second on the axle in the direction of travel.



Equipment

Standard equipment

- Airbag: Passenger airbag deactivation
- Exterior mirrors painted in body color, electrically adjustable, heated and foldable
- Tires: 6.5 J x 16 design wheels (4) with 205/60 R16 tires
- Hill start assist
- Roof rails, aluminum
- Diesel particulate filter (DPF)
- Electronic Shifter
- Driver information system with on-board computer, color (10.7 cm screen diagonal)
- Electric parking brake with auto-hold function
- FordPass Connect including live traffic information
- Luggage compartment lighting
- Cruise control
- Illuminated glove compartment
- rear window wiper
- Interior mirror, automatically dimming
- Isofix bracket
- Headrests: 2 front and 3 rear, height adjustable
- LED taillights
- Steering wheel: 3-spoke design
- Make-up mirrors in driver and passenger sun visors
- MyKey key system (individually programmable second key)
- Emergency call assistant
- Front and rear parking pilot system
- Post-Collision Assist
- Tire repair kit
- Windscreen wipers with rain sensor (sensitivity adjustable)
- Headlight assistant with day/night sensor
- Electromechanical speed-dependent power steering
- Seats: Driver's seat height adjustable
- Seats: Front sports seats with enhanced lateral support
- 12-volt power outlet in the luggage compartment
- Variable radiator air intake
- Warning system for unfastened seat belts for the 1st and 2nd rows of seats
- Anti-lock braking system (ABS) with electronic brake force distribution (EBD)
- Attachment points behind the second row of seats for mounting the safety partition net
- Fabric headliner
- Roof spoiler painted in car color
- Tachometer
- Electronic Safety and Stability Program (ESP)
- Lane keeping assist including lane keeping assist
- Electric windows front and rear
- Ford Power Start function
- luggage compartment cover
- Speed limiter
- Transmission: 8-speed automatic transmission
- Back window, heater
- Interior lighting with LED technology
- Intelligent security system
- Air conditioning with automatic temperature control
- Paint finish: Solid
- LED headlights
- Adjustable steering column
- Center console "Premium" front
- Navigation: Ford SYNC 4 including Ford navigation system with AppLink, 13.2" touchscreen and DAB/DAB+
- Upholstery: Cloth
- Pre-Collision Assist
- Tire Pressure Monitoring System (TPMS)
- Headlight low beam
- Selective driving mode switch
- Seats: Passenger seat height-adjustable, manually
- Seats: Rear seat backrest
- Start-stop system
- Carpet floor mats in the front
- Lashing eyes in the luggage compartment
- Electronic immobilizer
- Central locking with remote control and remote luggage compartment release

Extra equipment

- Paint finish: Metallic
- Side windows from the 2nd row of seats and rear window, dark tinted.
- Package: Winter (heated windscreen - heated steering wheel - individually and variably heated front seats)
- Safety partition net for luggage compartment



Brief expert findings

Documents submitted	At the time of the inspection, the vehicle registration certificate Part 2 (title) was available, but the vehicle registration certificate Part 1 (document) was not. (Copy)
VIN comparison	The vehicle identification number (VIN) was read from the vehicle and its conformity with the submitted documents was confirmed by the undersigned during the inspection.
Inspection	The inspection conditions were sufficient for the assessment of the vehicle. Lifting equipment and/or a pit were available for examining the vehicle.
Test drive	A short maneuvering and shunting exercise was carried out on the company premises.
Engine function test	An engine test run was performed.

Value reducing factors

No.	Component group	Description
1	2nd wheel set	1 wheel cover - Broken / torn - Replace
2	Front bumper	Spoiler (Rechts) - Scratched - Replace
3	Door - rear right side	Door - dent(s) - Smart repair
4	Door - front left side	Door - Dent / paintcoat damage - Smart repair
5	Trim / covers	Trim / covers (Blende Heckklappe rechts) - Scratch(es) - Replace
6	Rear bumper	Rear bumper - Scratch(es) - Paint
7	Front bumper	Front bumper (Lackläufer, Lackeinschlüsse) - Unprofessionally repaired - Repair and paint
8	Roof	Roof (Verätzung) - Paint defect - Paint
9	Vehicle glazing	Windscreen (mit Heizung) - Stone chips - Replace

Wear and tear

No.	Component group	Description
1	Trim / covers	Boot lid - interior trim - Scratch(es) - No deduction
2	2nd wheel set	1 wheel cover - Scratch(es) - No deduction
3	Side panel - rear left side	Side panel - dent(s) - No deduction
4	Door - rear left side	Door - Scratch(es) - No deduction
5	Bonnet	Bonnet - Stone chips - No deduction
6	Side panel - rear left side	Sill - Scratch(es) - No deduction

The vehicle shows signs of wear and tear commensurate with its age and use.

Missing parts

Description

Engine - Engine cover

Repainting

No. Repainting

- Mudguard - left side, Professionally carried out, Invoice of repair done Non-existent
- Door - front left side, Professionally carried out, Invoice of repair done Non-existent

Paint coat thickness measurement

Mudguard - left side 165 µm | Door - front left side 195 µm



Order/Scope of Order

An order was placed to prepare a sales report for the described vehicle. This report includes the following:

- Description of key vehicle information
- Documentation of equipment features
(Delivery by third-party service providers)
- Documentation of damage, defects, missing parts
- Documentation of prior damage, unrepaired prior damage, repainting
- A brief visual or functional inspection of the equipment details, if possible.
(Functional testing of driver assistance systems is not included in the scope of services!)
- a photographic documentation of the vehicle

Basis for the order

This product is based on the guidelines for vehicle returns and valuations published by Alphabet Fleet GmbH. The expert makes the specific findings in each individual case objectively, within the framework of the prescribed standards, based on their own expertise.

The vehicle inspection takes place in a fully assembled, unassembled state.

Damage or defects that can only be detected during disassembly/diagnostic work or through further investigation remain within the realm of prognostic risk. An increased risk exists due to concealed defects caused by fraudulent misrepresentation and which were not identifiable by the expert.

Damage or defects resulting from normal use or wear and tear of the vehicle will be accepted in accordance with the applicable standard.

There was no explicit identification or monetary consideration of the expected features within the product.

Features which, in their nature and extent, slightly exceed normal use but do not constitute unacceptable damage, will be documented and indicated as signs of wear, if applicable.

Damage or defects that, according to the applicable standard, can no longer be attributed to normal use or wear and tear are listed under "Value Reducing Factors" in the product description.

Depending on the product specification, a monetary ID can be provided. If this takes place, the costs can be 100% d or pro rata depending on the vehicle's age and mileage.

Previous damages

No apparent prior damage that had been repaired could be found on the vehicle.

Comments

- Winterradsatz ist kein Bestandteil des Auslieferumfangs.



Figure 1: Diagonal front (left)



Figure 2: Diagonal front (right)



Figure 3: Diagonal rear (left)



Figure 4: Diagonal rear (right)



Figure 5: Interior - front

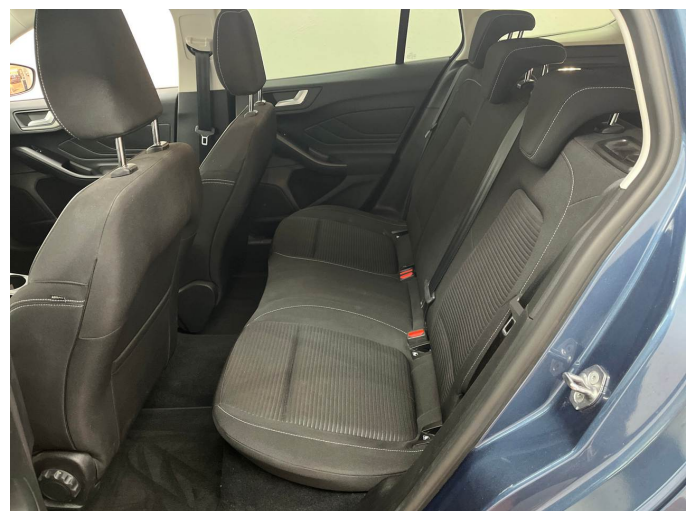


Figure 6: Interior - rear



Figure 7: Instrument cluster



Figure 8: Instrument panel

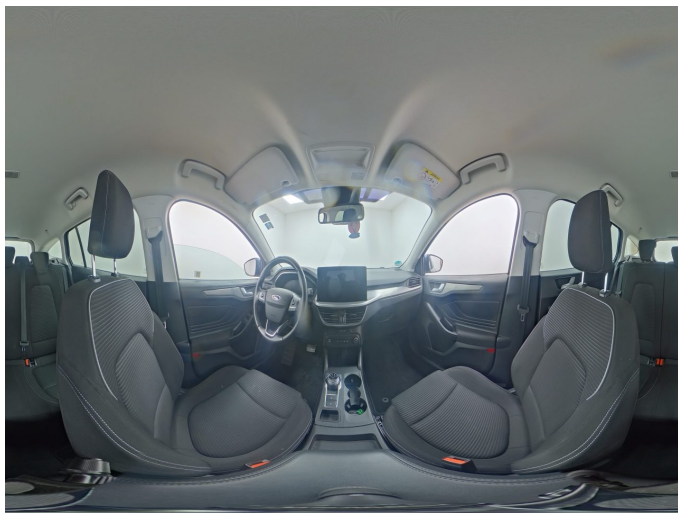


Figure 9: Interior 360° view



Figure 10: Cargo area

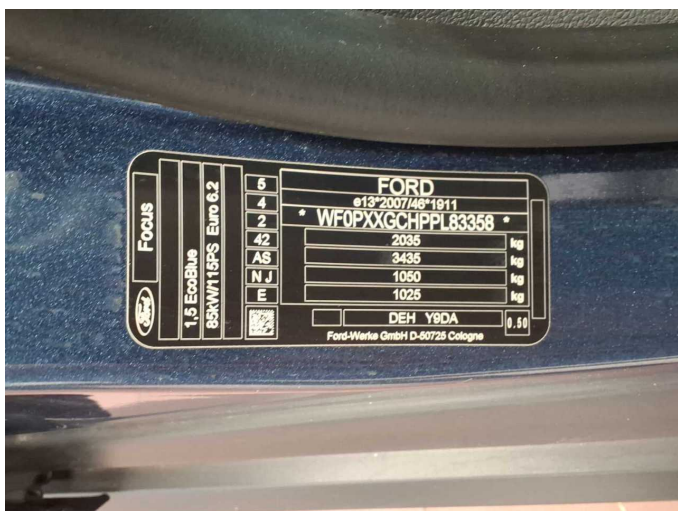


Figure 11: VIN



Figure 12: Mounted tyres



Figure 13: Documents



Figure 14: Documents



Figure 15: Additional tyres

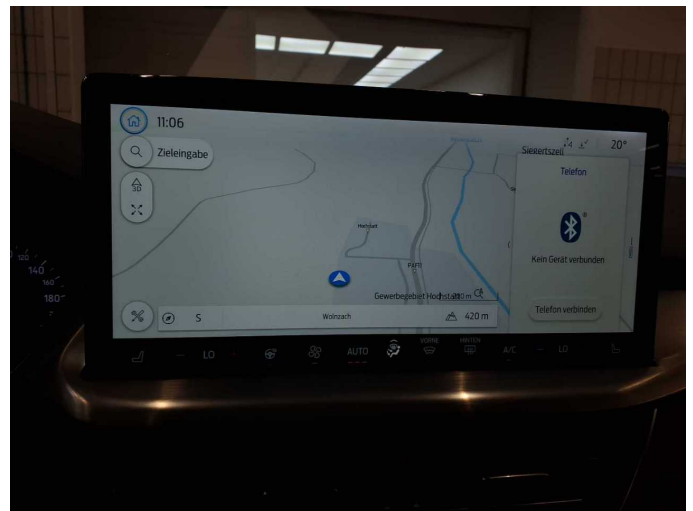


Figure 16: Navigation



Figure 17: Misc.

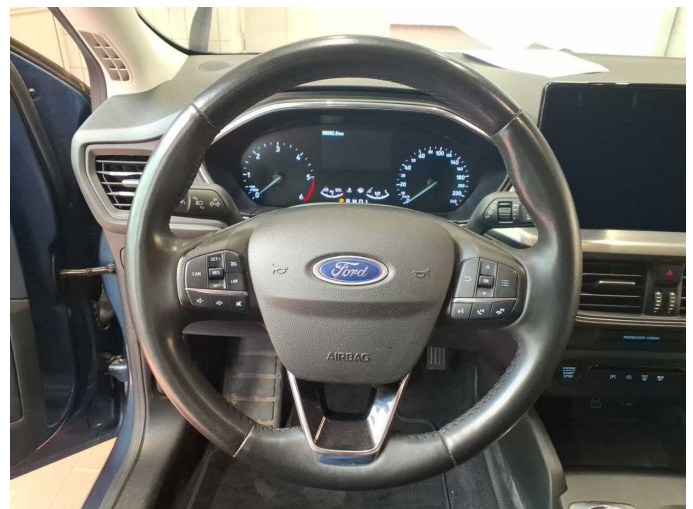


Figure 18: Misc.



Figure 19: Misc.



Figure 20: Misc.



Figure 21: Misc.



Figure 22: Misc.



Figure 23: Misc.



Figure 24: Misc.



Figure 25: Misc.



Figure 26: Misc.



Figure 27: Misc.



Figure 28: Misc.



Figure 29: Misc.



Damage 1: 2nd wheel set: 1 wheel cover - Broken / torn - Replace



Damage 1: 2nd wheel set: 1 wheel cover - Broken / torn - Replace



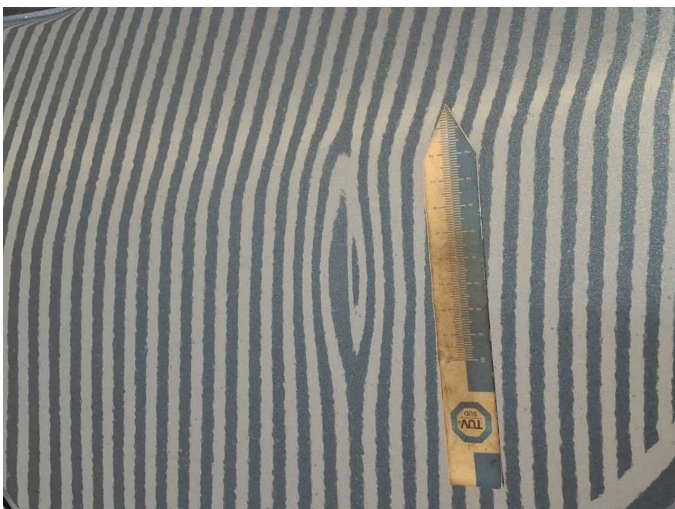
Damage 2: Front bumper: Spoiler (Rechts) - Scratched - Replace



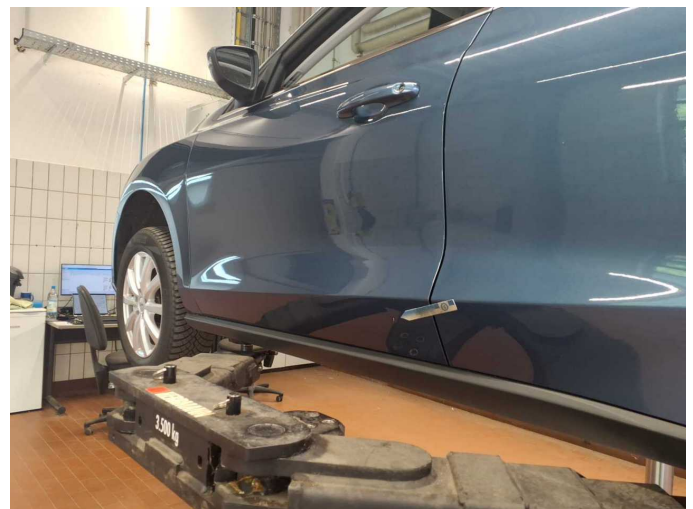
Damage 2: Front bumper: Spoiler (Rechts) - Scratched - Replace



Damage 3: Door - rear right side: Door - dent(s) - Smart repair



Damage 3: Door - rear right side: Door - dent(s) - Smart repair



Damage 4: Door - front left side: Door - Dent / paintcoat damage - Smart repair



Damage 4: Door - front left side: Door - Dent / paintcoat damage - Smart repair



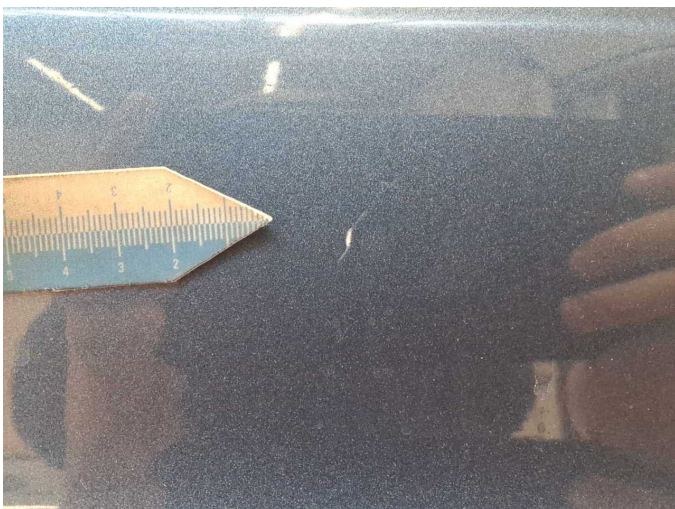
Damage 4: Door - front left side: Door - Dent / paintcoat damage - Smart repair



Damage 6: Rear bumper: Rear bumper - Scratch(es) - Paint



Damage 6: Rear bumper: Rear bumper - Scratch(es) - Paint



Damage 6: Rear bumper: Rear bumper - Scratch(es) - Paint



Damage 6: Rear bumper: Rear bumper - Scratch(es) - Paint



Damage 6: Rear bumper: Rear bumper - Scratch(es) - Paint



Damage 6: Rear bumper: Rear bumper - Scratch(es) - Paint



Damage 7: Front bumper: Front bumper (Lackläufer, Lackeinschlüsse) - Unprofessionally repaired - Repair and paint



Damage 7: Front bumper: Front bumper (Lackläufer, Lackeinschlüsse) - Unprofessionally repaired - Repair and paint



Damage 7: Front bumper: Front bumper (Lackläufer, Lackeinschlüsse) - Unprofessionally repaired - Repair and paint



Damage 7: Front bumper: Front bumper (Lackläufer, Lackeinschlüsse) - Unprofessionally repaired - Repair and paint



Damage 7: Front bumper: Front bumper (Lackläufer, Lackeinschlüsse) - Unprofessionally repaired - Repair and paint



Damage 7: Front bumper: Front bumper (Lackläufer, Lackeinschlüsse) - Unprofessionally repaired - Repair and paint



Damage 7: Front bumper: Front bumper (Lackläufer, Lackeinschlüsse) - Unprofessionally repaired - Repair and paint



Damage 7: Front bumper: Front bumper (Lackläufer, Lackeinschlüsse) - Unprofessionally repaired - Repair and paint



Damage 8: Roof: Roof (Verätzung) - Paint defect - Paint



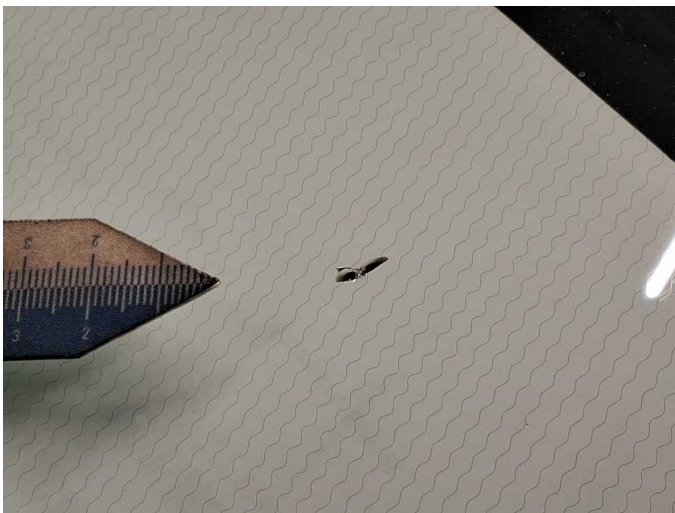
Damage 8: Roof: Roof (Verätzung) - Paint defect - Paint



Damage 8: Roof: Roof (Verätzung) - Paint defect - Paint



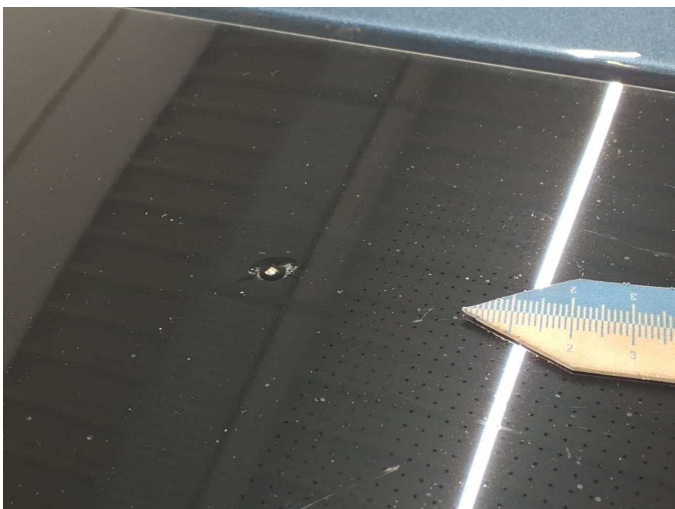
Damage 9: Vehicle glazing: Windscreen (mit Heizung) - Stone chips - Replace



Damage 9: Vehicle glazing: Windscreen (mit Heizung) - Stone chips - Replace



Damage 9: Vehicle glazing: Windscreen (mit Heizung) - Stone chips - Replace



Damage 9: Vehicle glazing: Windscreen (mit Heizung) - Stone chips - Replace



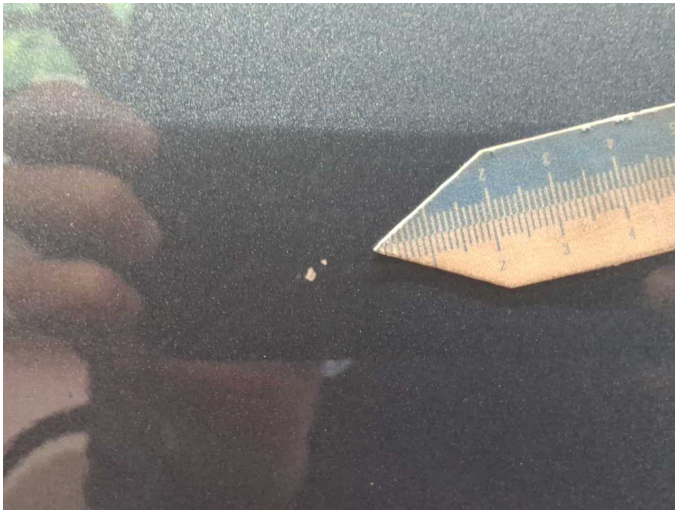
Wear and tear 2: 2nd wheel set: 1 wheel cover - Scratch(es) - No deduction



Wear and tear 2: 2nd wheel set: 1 wheel cover - Scratch(es) - No deduction



Wear and tear 4: Door - rear left side: Door - Scratch(es) - No deduction



Wear and tear 4: Door - rear left side: Door - Scratch(es) - No deduction



Repainting 1: Mudguard - left side



Repainting 2: Door - front left side



Wartungshistorie

(gemäß Auftraggeber Informationen)

Fahrgestellnummer: WF0PXXGCHPPL83358
Hersteller / Modell: FORD FORD Focus Turnier 1.5 EcoBlue Start-Stopp-System Aut.
TITANIUM

Datum	KM-Stand	Beschreibung
08.01.2026	84.646	Motoröl b. Wartung; Ölfilter ern; Regelwartungsdienst; Wartung Sonstiges
09.09.2025	76.059	Motoröl b. Wartung; Ölfilter ern; Ölwechsel
25.06.2025	65.321	Bremsklötze hinten; Bremsklötze vorne; Bremsscheiben + Klötze h; Bremsscheiben + Klötze v; Bremsscheiben hinten; Bremsscheiben vorne
30.04.2025	59.917	Bremsflüssigkeit; Bremsflüssigkeit ern; Kraftstofffilter ern; Luftfiltereinsatz ern; Motoröl b. Wartung; Ölfilter ern; Regelwartungsdienst; Wartung Sonstiges
11.12.2024	46.836	Motoröl b. Wartung; Ölwechsel
14.08.2024	32.969	Motoröl b. Wartung; Ölfilter ern; Regelwartungsdienst; Wartung Sonstiges
21.06.2024	21.339	Motoröl b. Wartung; Ölfilter ern; Regelwartungsdienst; Wartung Sonstiges