

Expertise

Protocol number: 45440513
Order No. / Reference: 26104880
Inspection date: 12 May 2026

Manufacturer: Opel

Model: Astra Sports Tourer 1.5 D Automatik Elegance

VIN: VXKFCYHZTP1082542



Vehicle details

Manufacturer / Type / Model / Equipment

Opel Astra Sports Tourer 1.5 D Automatik Elegance

Vehicle Identification number VXKFCYHZTP1082542

Mileage (Read) 151,033 km

First registration 23 Feb 2024

Number of holders 1

Power / Engine displacement 96 kw / 1,498 ccm

Fuel type / Cylinder Diesel / 4

Gearbox / Number of gears Automatic / 8

Type of drive Front drive

Type of vehicle Station wagon

Colour / colour code Kristall Silber Metallic

Doors / Seats 5 / 5

Upholstery type Cloth / leather combination

Colour of upholstery Black-Grey

Vehicle with smoke odor no



Vehicle details

Maintenance booklet / proof	Available / complete	Next maintenance in	10 Monat(e)
Last service on / at	03/2026 at 149,005 km		
Key is / should be	2 / 2	FZG documents	ZB#2 (B) was available (copy), ZB#1 (S) was not available.
		Letter No.	GY769066
Previous damage / Accident	Detectable	Repainting	Detectable
Inspection conditions	sufficient	Lifting equipment / pit	yes
Test drive	Not performed	Engine function test	Performed
Manufacturer key number/ type code number	1889 / AEY 00087		
Emission standard	EURO6;WLTP;AP;PI/CI; M, N1 I	fine dust sticker	
Permitted total weight	1,980 kg	Empty weight	

Tyres

Mounted tyres

#	Tyre size	Type of tyre	Manufacturer	Tread depth
1)	205/55 R16 91H	Winter tyres on Light alloy	Pirelli	5mm / 5mm
2)	205/55 R16 91H	Winter tyres on Light alloy	Pirelli	8mm / 8mm

Additional tyres

#	Tyre size	Type of tyre	Manufacturer	Tread depth
1)	225/45 R17 94V	Summer tyres on Light alloy	Continental	4mm / 4mm
2)	225/45 R17 94V	Summer tyres on Light alloy	Continental	4mm / 4mm

Legend: Tread depth information for the left tire is listed first, for the right tire it is listed second on the axle in the direction of travel.



Equipment

Standard equipment

- Storage compartments (storage compartment in the center console, in the front doors suitable for 1.5-liter beverage bottles, in the rear doors suitable for 0.5-liter beverage bottles, glove compartment with LED lighting)
- Airbag: Front and rear outer head airbags
- Anti-lock braking system (ABS) (including brake assist)
- Exterior mirrors, electrically adjustable, heated and folding
- Exterior mirror housings in black
- Hill Start Assist
- third brake light
- Diesel particulate filter (DPF) maintenance-free (exhaust aftertreatment via SCR (Selective Catalytic Reduction) catalyst with AdBlue (urea injection). Vehicles with BlueInjection technology require refilling of the AdBlue fluid between regular service intervals. A display in the vehicle informs the driver in good time when refilling is necessary.)
- Front Collision Warning (with automatic emergency braking, pedestrian detection, lane keeping assist, traffic sign recognition and driver fatigue detection, as well as automatic speed assist with stop function)
- Wiring harness for trailer hitch
- Front headrests and 3 rear headrests, height adjustable
- LED ambient lighting (front doors, adjustable in 8 colors)
- LED interior lighting (including reading lights, front and rear, as well as trunk lighting and lighting in the front footwell)
- Steering wheel: Leather steering wheel, flattened, perforated, with steering wheel remote control and paddle shifters
- Illuminated makeup mirrors in both sun visors
- Multimedia Infotainment System (with 10" color touchscreen display and 10" driver information display, automatic music recognition, Bluetooth audio streaming, hands-free calling, simultaneous pairing of 2 mobile phones, wireless smartphone integration via Apple CarPlay and Android Auto, personalization options, 4x20 watts, favorite station memory (24 per profile), speed-dependent volume control, FM/AM, DAB+, RDS-EON, 2 USB-C ports, breakdown and emergency call, vehicle status and information)
- 180-degree reversing camera (parking pilot, front and rear parking aid)
- Seat belts: Three-point seat belts in all seats (belt force limiter and belt tensioner in the front and on the outer rear seats - warning tone and light for unfastened seat belts in all seats)
- Solar Protect heat-insulating glazing (in the rear, heavily tinted)
- Start/Stop system (Driving assistant - Reinforced starter - AGM high-performance battery - eco switch to deactivate the start/stop function - Brake energy recuperation)
- Pre-installation for ISOFIX child seat mounting system (incl. top tether attachment points, rear outer)
- Airbag: Chest-pelvis side airbags, driver and front passenger (side airbag, front passenger can be manually deactivated)
- Airbag: Front airbags, driver and front passenger (front passenger airbag can be manually deactivated)
- Automatic activation of the hazard warning lights (and unlocking of the doors after deployment of the airbag or seatbelt pretensioner)
- On-board computer
- Roof rails
- Tachometer
- Electronic brake force distribution (EBD)
- Electronic Stability Program (ESP) and Traction Control with engine and brake intervention (TCPlus)
- Electric windows front and rear (with one-touch function and anti-pinch protection)
- Transmission: 8-speed automatic transmission
- Back window, heater
- rear window wiper
- Interior rearview mirror, automatically dimming
- Dual-zone automatic climate control (dual-zone automatic climate control with separate temperature control for driver and front passenger - recirculation mode, manual - particle/activated carbon filter - automatic air distribution - sun position sensor - humidity sensor)
- LED headlights (LED headlights - LED daytime running lights - LED taillights - LED turn signals - manual headlight range control - high beam assist - automatic low beam - rain sensor)
- Center armrest, front and rear (front center armrest with USB port and 2 USB chargers - front and rear cup holders - storage compartments - rear center armrest with pass-through)
- Fog light
- Electric parking brake
- Tire repair kit (including tire sealant and 12-volt compressor (without jack))
- Tire pressure monitoring system
- Wheels: Alloy wheels 7.5 J x 17 (5 spokes) in silver/black (with low rolling resistance tires 225/45 R 17)
- Rear seat backrest folds forward in a 40:20:40 split
- Keyless locking and starting system Keyless Open & Start
- safety net
- Seats: Ergonomic active driver's seat, fabric/premium leatherette Isabella (Ergonomic active seat (AGR), driver - fabric Isabella/ premium leatherette, black - driver's seat 10-way adjustable (length, height, tilt, backrest tilt, seat cushion tilt) - front passenger seat 6-way adjustable (length, height, tilt) - 4-way front headrests - pockets on the back of the front seats)
- 12V power outlet in the center console
- Electronic immobilizer
- Central locking with remote control (and interior switch)



Extra equipment

- Paint finish: Metallic
- Seats: Ergonomic active driver's seat in Isabella fabric/premium leatherette (Elegance) (certified by the German Campaign for Healthy Backs (AGR) - adjustable length, height, tilt, backrest angle, and seat cushion angle - electro-pneumatically adjustable lumbar support (height and length adjustable) - extendable thigh support - pockets on the backs of the front seats, driver and front passenger - Isabella fabric/premium leatherette, black - heated front seats and steering wheel - heated ThermoTec windshield)
- Heated windscreen, ThermoTec
- Navigation system (Multimedia infotainment system with 10" color touchscreen display and 10" driver information display; navigation system with integrated memory; 3D map display for Europe and Russia; dynamic route guidance via map and/or arrow display and voice prompts; TomTom Online Traffic; online POI search and route guidance; parking information; fuel price information; live weather; over-the-air map updates; intelligent voice control; "Hey Opel" shortcut button; 6 functions; active route suggestions)

Brief expert findings

Documents submitted	At the time of the inspection, the vehicle registration certificate Part 2 (title) was available, but the vehicle registration certificate Part 1 (document) was not. (Copy)
VIN comparison	The vehicle identification number (VIN) was read from the vehicle and its conformity with the submitted documents was confirmed by the undersigned during the inspection.
Inspection	The inspection conditions were sufficient for the assessment of the vehicle. Lifting equipment and/or a pit were available for examining the vehicle.
Test drive	No test drive/shunting maneuver was carried out during the inspection of the vehicle.
Engine function test	An engine test run was performed.

Value reducing factors

No.	Component group	Description
1	Trim / covers	Brightware / decorative strip - Loose - Repair
2	Trim / covers	Door trim - rear right side - Scratch(es) - Loss in value
3	Wing mirror - right side	Cap - Scratch(es) - Smart repair
4	Seat - rear	Back seat - Soiled - Clean
5	2nd wheel set	1 tyre - Damaged - Replace
6	Instrument panel	Indicator light (Parkhilfe) - on - Perform diagnosis
7	Interior	Interior - Scratch(es) - Loss in value
8	2nd wheel set	2 alloy rims - Scratch(es) - Loss in value
9	2nd wheel set	2 alloy rims - Scratched - Replace
10	Rear bumper	Rear bumper - Scratch(es) - Paint
11	Boot lid / rear door	Boot lid - Scratch(es) - Paint
12	Side panel - rear right side	Side panel - Dent / paintcoat damage - Repair and paint

Wear and tear

No.	Component group	Description
1	Bonnet	Bonnet - Stone chips - No deduction
2	Wheel / tyres	Alloy rim - front right side - Scratched - No deduction
3	Wheel / tyres	Alloy rim - rear left side - Scratch(es) - No deduction
4	Wheel / tyres	Alloy rim - front left side - Scratched - No deduction
5	Front bumper	Front bumper - Stone chips - No deduction

The vehicle shows signs of wear and tear commensurate with its age and use.



Previous damages

No.	Previous damage	Extent of damage (Net)
1	Side right, Provided by user / customer, from 29 Jan 2025	1.919,25 €
2	Side - left, Provided by user / customer, from 24 Jan 2025	5.627,48 €

Repainting

No.	Repainting
1	Side panel - rear left side, Door - rear right side, Professionally carried out, Invoice of repair done Non-existent

Paint coat thickness measurement

Door - rear right side	151 µm	Door - front left side	153 µm
------------------------	--------	------------------------	--------

Order/Scope of Order

An order was placed to prepare a sales report for the described vehicle. This report includes the following:

- Description of key vehicle information
- Documentation of equipment features
(*Delivery by third-party service providers*)
- Documentation of damage, defects, missing parts
- Documentation of prior damage, unrepaired prior damage, repainting
- A brief visual or functional inspection of the equipment details, if possible.
(*Functional testing of driver assistance systems is not included in the scope of services!*)
- a photographic documentation of the vehicle

Basis for the order

This product is based on the guidelines for vehicle returns and valuations published by Alphabet Fleet GmbH. The expert makes the specific findings in each individual case objectively, within the framework of the prescribed standards, based on their own expertise.

The vehicle inspection takes place in a fully assembled, unassembled state.

Damage or defects that can only be detected during disassembly/diagnostic work or through further investigation remain within the realm of prognostic risk. An increased risk exists due to concealed defects caused by fraudulent misrepresentation and which were not identifiable by the expert.

Damage or defects resulting from normal use or wear and tear of the vehicle will be accepted in accordance with the applicable standard.

There was no explicit identification or monetary consideration of the expected features within the product.

Features which, in their nature and extent, slightly exceed normal use but do not constitute unacceptable damage, will be documented and indicated as signs of wear, if applicable.

Damage or defects that, according to the applicable standard, can no longer be attributed to normal use or wear and tear are listed under "Value Reducing Factors" in the product description.

Depending on the product specification, a monetary ID can be provided. If this takes place, the costs can be 100% d or pro rata depending on the vehicle's age and mileage.

Previous damages

According to available information previous damages were repaired at the vehicle. Traces of repairs, which allow conclusions about the area of repair, were not recognizable during the inspection.

Comments

Winter - Radsatz ist kein Bestandteil des Lieferumfangs.



Figure 1: Diagonal front (left)



Figure 2: Diagonal front (right)



Figure 3: Diagonal rear (left)



Figure 4: Diagonal rear (right)



Figure 5: Interior - front



Figure 6: Interior - rear



Figure 7: Instrument cluster



Figure 8: Instrument panel



Figure 9: Interior 360° view



Figure 10: Cargo area

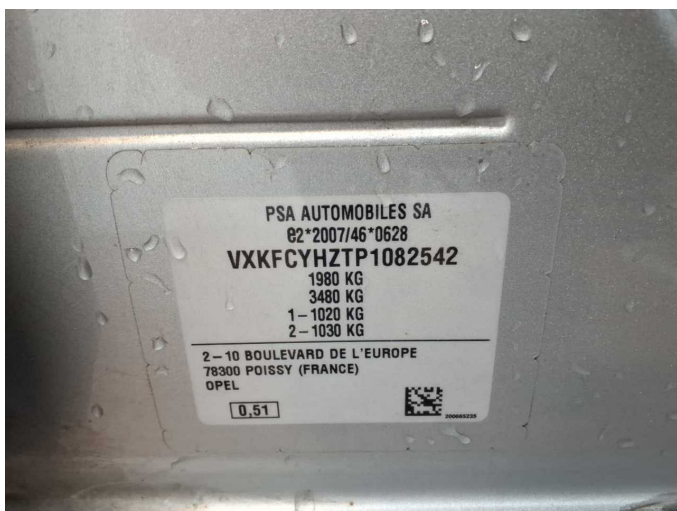


Figure 11: VIN



Figure 12: Mounted tyres



Figure 13: Documents

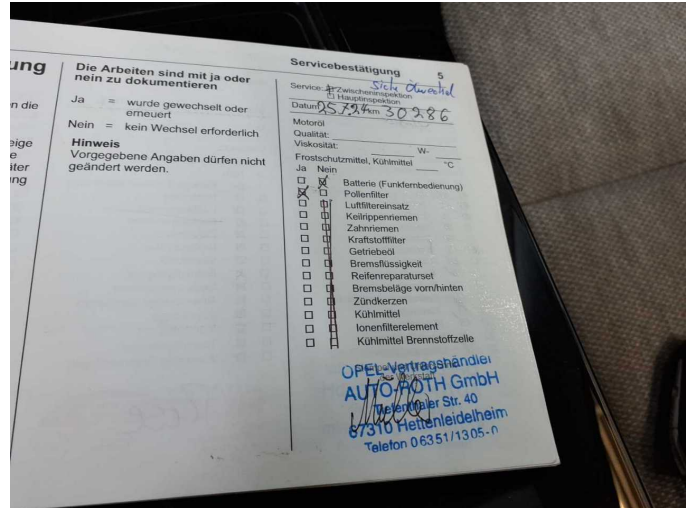


Figure 14: Documents

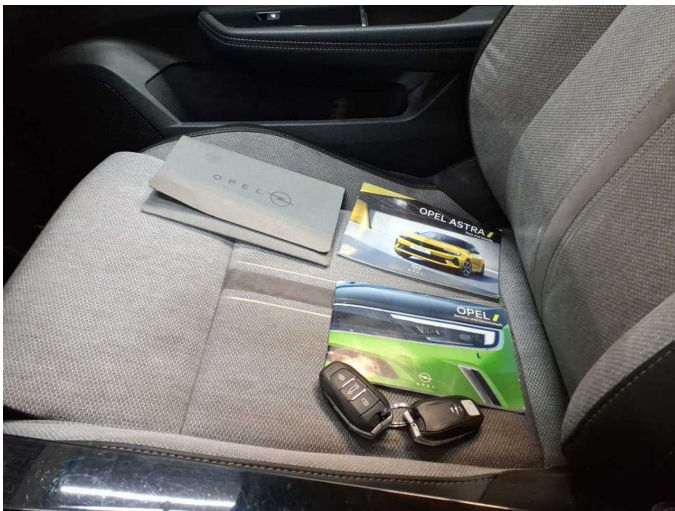


Figure 15: Documents



Figure 16: Documents



Figure 17: Additional tyres



Figure 18: Navigation



Figure 19: Misc.



Figure 20: Misc.



Figure 21: Misc.



Figure 22: Misc.



Figure 23: Misc.



Figure 24: Misc.



Figure 25: Misc.



Figure 26: Misc.

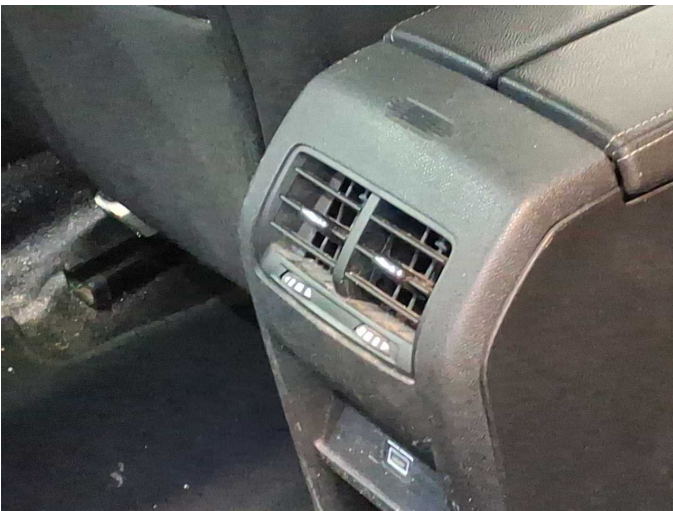


Figure 27: Misc.

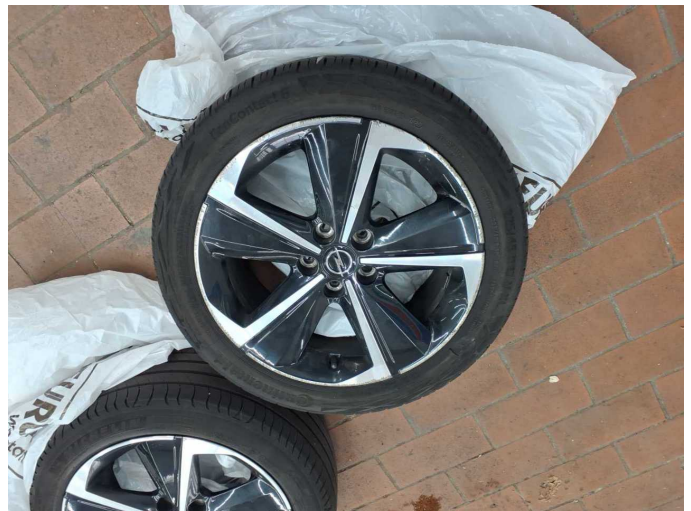


Figure 28: Misc.

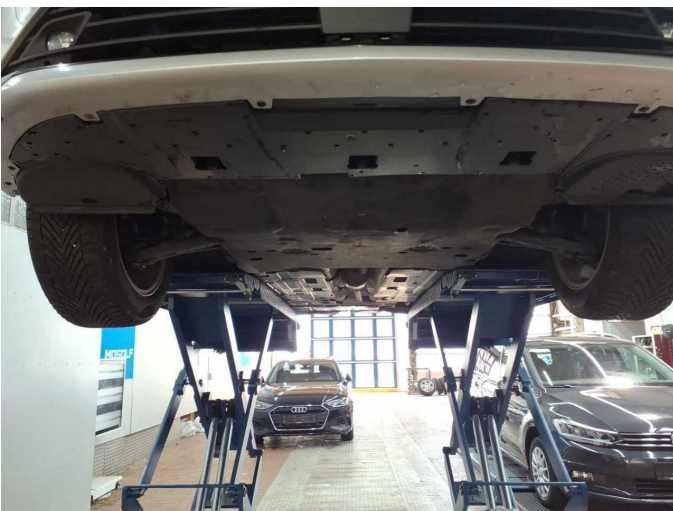


Figure 29: Misc.



Damage 1: Trim / covers: Brightware / decorative strip - Loose - Repair



Damage 1: Trim / covers: Brightware / decorative strip - Loose - Repair



Damage 2: Trim / covers: Door trim - rear right side - Scratch(es) - Loss in value



Damage 2: Trim / covers: Door trim - rear right side - Scratch(es) - Loss in value



Damage 2: Trim / covers: Door trim - rear right side - Scratch(es) - Loss in value



Damage 3: Wing mirror - right side: Cap - Scratch(es) - Smart repair



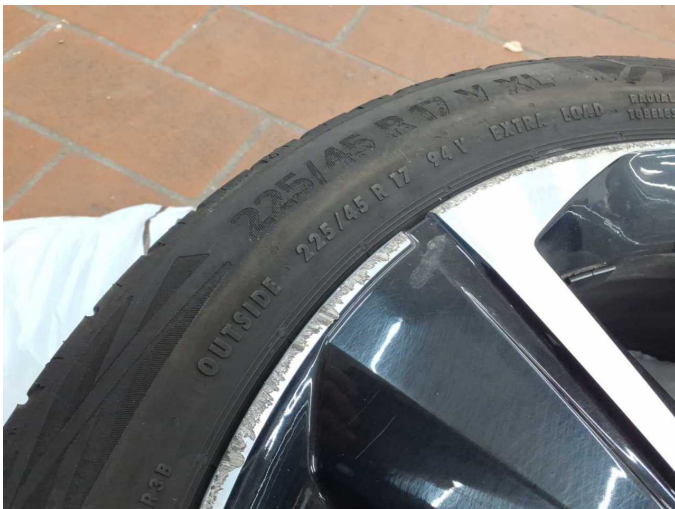
Damage 3: Wing mirror - right side: Cap - Scratch(es) - Smart repair



Damage 4: Seat - rear: Back seat - Soiled - Clean



Damage 4: Seat - rear: Back seat - Soiled - Clean



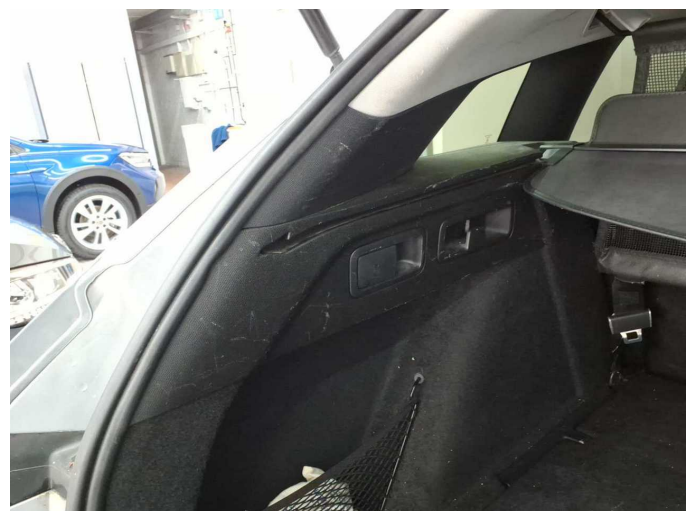
Damage 5: 2nd wheel set: 1 tyre - Damaged - Replace



Damage 5: 2nd wheel set: 1 tyre - Damaged - Replace



Damage 6: Instrument panel: Indicator light (Parkhilfe) - on - Perform diagnosis



Damage 7: Interior: Interior - Scratch(es) - Loss in value



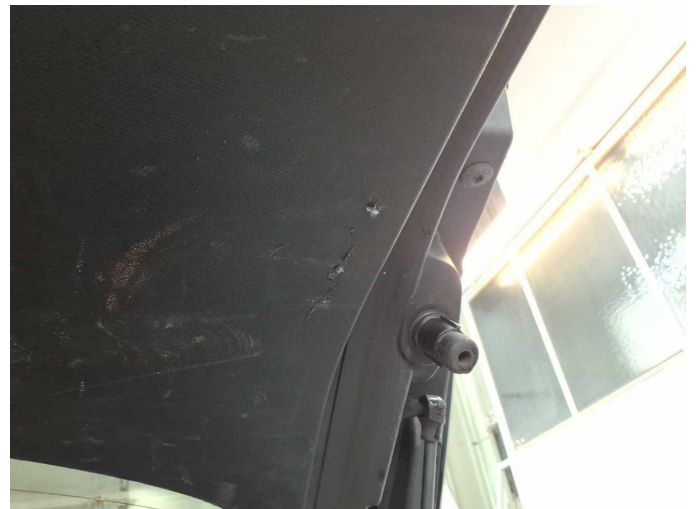
Damage 7: Interior: Interior - Scratch(es) - Loss in value



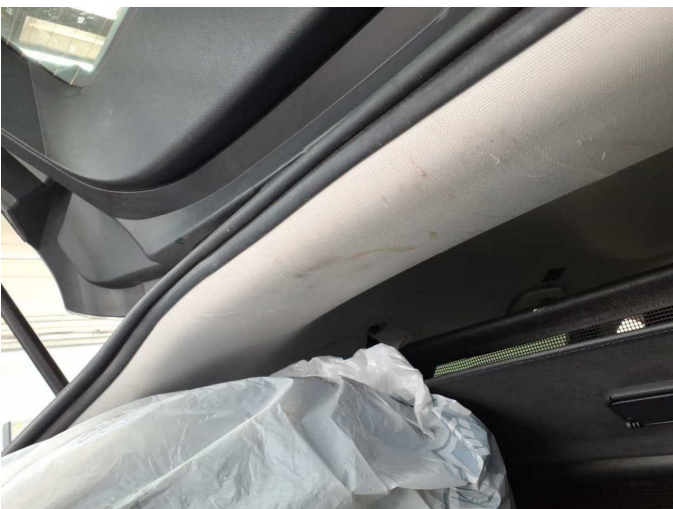
Damage 7: Interior: Interior - Scratch(es) - Loss in value



Damage 7: Interior: Interior - Scratch(es) - Loss in value



Damage 7: Interior: Interior - Scratch(es) - Loss in value



Damage 7: Interior: Interior - Scratch(es) - Loss in value



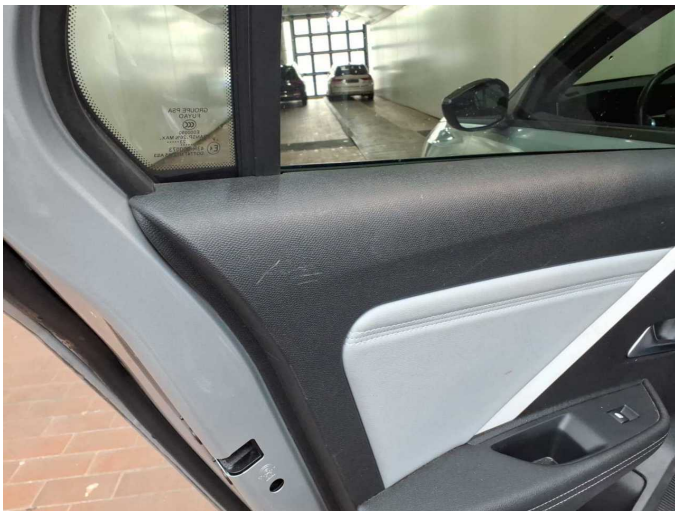
Damage 7: Interior: Interior - Scratch(es) - Loss in value



Damage 7: Interior: Interior - Scratch(es) - Loss in value



Damage 7: Interior: Interior - Scratch(es) - Loss in value



Damage 7: Interior: Interior - Scratch(es) - Loss in value



Damage 8: 2nd wheel set: 2 alloy rims - Scratch(es) - Loss in value



Damage 8: 2nd wheel set: 2 alloy rims - Scratch(es) - Loss in value



Damage 8: 2nd wheel set: 2 alloy rims - Scratch(es) - Loss in value



Damage 8: 2nd wheel set: 2 alloy rims - Scratch(es) - Loss in value



Damage 8: 2nd wheel set: 2 alloy rims - Scratch(es) - Loss in value



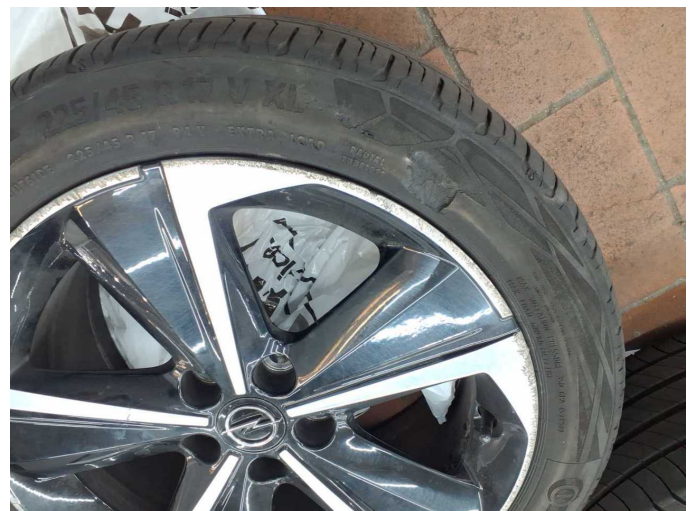
Damage 9: 2nd wheel set: 2 alloy rims - Scratched - Replace



Damage 9: 2nd wheel set: 2 alloy rims - Scratched - Replace



Damage 9: 2nd wheel set: 2 alloy rims - Scratched - Replace



Damage 9: 2nd wheel set: 2 alloy rims - Scratched - Replace



Damage 9: 2nd wheel set: 2 alloy rims - Scratched - Replace



Damage 9: 2nd wheel set: 2 alloy rims - Scratched - Replace



Damage 9: 2nd wheel set: 2 alloy rims - Scratched - Replace



Damage 9: 2nd wheel set: 2 alloy rims - Scratched - Replace



Damage 9: 2nd wheel set: 2 alloy rims - Scratched - Replace



Damage 10: Rear bumper: Rear bumper - Scratch(es) - Paint



Damage 10: Rear bumper: Rear bumper - Scratch(es) - Paint



Damage 10: Rear bumper: Rear bumper - Scratch(es) - Paint



Damage 10: Rear bumper: Rear bumper - Scratch(es) - Paint



Damage 10: Rear bumper: Rear bumper - Scratch(es) - Paint



Damage 11: Boot lid / rear door: Boot lid - Scratch(es) - Paint



Damage 11: Boot lid / rear door: Boot lid - Scratch(es) - Paint



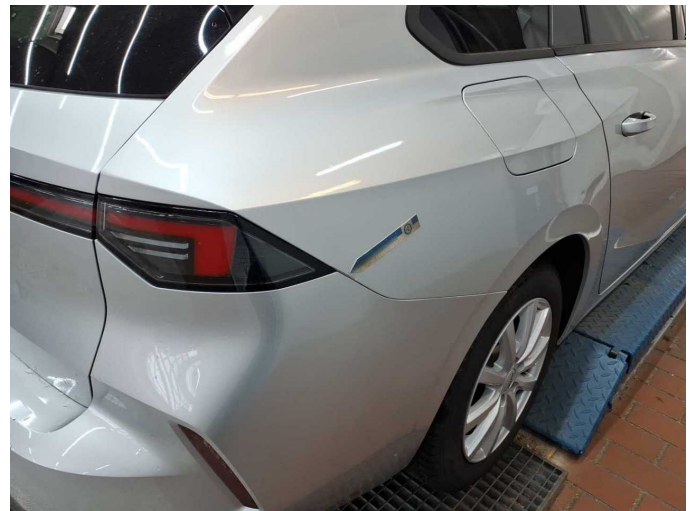
Damage 12: Side panel - rear right side: Side panel - Dent / paintcoat damage - Repair and paint



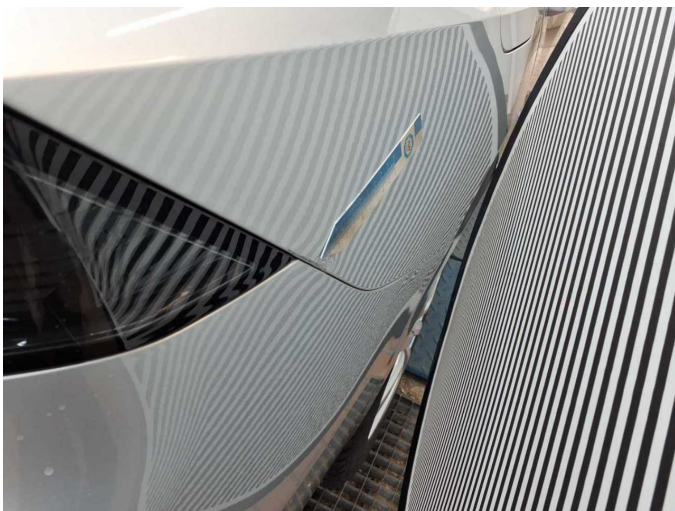
Damage 12: Side panel - rear right side: Side panel - Dent / paintcoat damage - Repair and paint



Damage 12: Side panel - rear right side: Side panel - Dent / paintcoat damage - Repair and paint



Damage 12: Side panel - rear right side: Side panel - Dent / paintcoat damage - Repair and paint



Damage 12: Side panel - rear right side: Side panel - Dent / paintcoat damage - Repair and paint



Repainting 1: Side panel - rear left side, Door - rear right side



Repainting 1: Side panel - rear left side, Door - rear right side



Repainting 1: Side panel - rear left side, Door - rear right side



Repainting 1: Side panel - rear left side, Door - rear right side