

Expertise

Protocol number: 46159268
Order No. / Reference: 26536753
Inspection date: 23 Jun 2026

Manufacturer: Mercedes-Benz

Model: C 220 d 9G-TRONIC Avantgarde Advanced

VIN: W1KAF0EB2PR121542



Vehicle details

Manufacturer / Type / Model / Equipment

Mercedes-Benz C 220 d 9G-TRONIC Avantgarde Advanced

Vehicle Identification number	W1KAF0EB2PR121542
Mileage (Read)	131,672 km
First registration	8 May 2023
Number of holders	1
Next periodical technical inspection	05/2028 (Report not on hand)

Power / Engine displacement	147 kw / 1,993 ccm
Fuel type / Cylinder	Hybrid Diesel / E / 44
Gearbox / Number of gears	Automatic / 9
Type of drive	Rear drive
Type of vehicle	Saloon car

Colour / colour code	SCHWARZ - UNILACK
Doors / Seats	5 / 5
Upholstery type	Cloth / leather combination
Colour of upholstery	Black



Vehicle details

Maintenance booklet / proof	digital evidence / incomplete	Next maintenance in	97 Tag(e)
Last service on / at	09/2025 at 108,307 km		
Key is / should be	2 / 2	FZG documents	ZB#2 (B) was available (copy), ZB#1 (S) was not available.
		Letter No.	GV671711
Previous damage / Accident	Detectable	Repainting	Detectable
Inspection conditions	sufficient	Lifting equipment / pit	No
Test drive	Not performed	Engine function test	Performed
Manufacturer key number/ type code number	2222 / AYA 00289		
Emission standard	EURO6;WLTP;AP;PI/CI; M, N1 I	fine dust sticker	
Permitted total weight	2,355 kg	Empty weight	

Tyres

Mounted tyres				
#	Tyre size	Type of tyre	Manufacturer	Tread depth
1)	225/50 R17 98Y	Summer tyres on Light alloy	Pirelli	6mm / 6mm
2)	225/50 R17 98Y	Summer tyres on Light alloy	Pirelli	6mm / 6mm

Replacement				
Typ	Tyre size	Type of tyre	Manufacturer	Tread depth
	Tirefit	Expiration date 10/2030		

Legend: Tread depth information for the left tire is listed first, for the right tire it is listed second on the axle in the direction of travel.

TÜV SÜD Auto Partner GmbH
Wiesenring 2
04159 Leipzig

Inspection location
Hartmann Fleet Professionals GmbH
Leerenstraße 25
29683 Bad Fallingbommel



Equipment



Standard equipment

- Adaptive Highbeam Assist (automatic switching of the high beams on and off - camera on the inside of the windshield - detects oncoming and preceding illuminated vehicles - activated by pressing the steering wheel control lever to the high beam position)
- Airbag: Center airbag (Additional airbag for increased front occupant protection in the event of a side impact)
- Airbag: Sidebag for driver and front passenger (combined thorax/pelvisbag)
- Ambient lighting with 64 light colors (Three dimming zones (Total, Ambient and Accent) - Variable brightness setting - 64 colors - Ten color moods - Integrated into the ENERGIZING comfort control programs)
- Brake assist, active
- Roof rails in matte black
- Double cup holder at the front
- Electronic Stability Program (ESP) (including Anti-lock Braking System (ABS) and Traction Control System (ASR))
- Chassis: AGILITY CONTROL chassis with selective damping system and lowered suspension
- Electric windows (4-way)
- Velour floor mats
- Speed Limit Assistant (The Speed Limit Assistant detects and displays speed limits.)
- Transmission: 9-speed automatic, 9G-TRONIC
- rear window wiper
- Interior headliner fabric crystal grey
- KEYLESS-GO start function
- THERMATIC automatic climate control with 2 climate zones (control via the central display or the climate control unit in the center console; sensor system for detecting, for example, indoor/outdoor temperature, sunlight, humidity, and dew point; automatic recirculation (only in conjunction with navigation system); ventilation system consisting of: 3 center vents and 2 side vents; fine dust activated carbon filter for filtering dust, soot, and pollen; dew point sensor; residual heat function for efficient use of engine waste heat)
- Steering wheel: Multifunction sports steering wheel in leather (sporty steering wheel in 3-spoke design - leather finish - black grained shift paddles - control via touch panels: left: driver display, cruise control and limiter or active distance assist DISTRONIC; right: MBUX multimedia system (e.g. audio volume and track selection, telephony and navigation), touch sensitivity adjustable via central display)
- Center console in high-gloss black
- Navigation: MBUX Navigation Premium (Pre-installation for navigation services - Package (control code) - Multimedia / Digital content - Hard disk navigation - Pre-installation for Live Traffic Information - Communication module (LTE) for the use of Mercedes me connect services)
- Airbag for driver and front passenger
- Airbag: Automatic passenger airbag deactivation (The system automatically deactivates the passenger airbag as soon as it detects a rear-facing child seat or registers that the passenger seat is unoccupied. A transponder in the child seat is not necessary. If it detects that an adult is taking the seat, the airbag is automatically activated, reducing the risk of incorrect operation.)
- Airbag: Windowbag for driver and front passenger
- Left and right exterior mirrors are heated and electrically adjustable
- Basic services (breakdown management, maintenance management, accident management, telediagnosis, remote vehicle diagnostics)
- Diesel particulate filter
- DYNAMIC SELECT (consisting of driving programs: Comfort, Sport, Eco mode)
- Driver display (31.2 cm (12.3") color LCD display with a resolution of 2400 x 900 pixels - five different menus with specific content and display styles)
- Fingerprint scanner (Color-illuminated fingerprint scanner in the control bar below the central display - Two fingerprints can be stored per user - Fast access replaces PIN entry - Protects personal data such as profiles as well as office and payment functions)
- Heated rear window
- ISOFIX child seat attachment with top tether in the rear
- Mechanical child safety lock for the rear doors
- Rear headrests (3)
- Front headrests
- Fuel tank with larger volume 66 l
- Paint finish: Solid
- LED High Performance headlights (The elements of the LED High Performance headlights: - Torch and trifunctional light guide for daytime running lights, position lights and turn signals - Multi-chamber reflector system with 4 individual reflectors each) for low beam and high beam. The elements of the rear lights in LED technology: - All light functions in full LED technology - Tail light - Brake light and parking light - Rear fog light (only on the left side) - Turn signals - Reversing light - 3rd brake light)
- Mercedes-Benz Emergency Call System (can provide a crucial time advantage in an emergency. A communication module with its own SIM card automatically triggers an emergency call upon detection of an accident, which can shorten the time until emergency services arrive. The emergency call can also be triggered manually to organize assistance.)
- Package: Storage (Luggage net on the left side panel in the trunk/cargo area - Elastic tension strap on the right in the cargo area (only for the T-Model) - Folding box under the load floor (not available for plug-in hybrid vehicles) - Double cup holder in the center console for 2 x 750 ml - Map pockets on the back of the front seats)



- Package: Interior lighting package (Illuminated glove compartment - Lighting for wireless mobile interface or mobile phone storage - Lighting for the storage compartment in the center console or the double cupholder - Lighting for the storage compartment under the armrest of the center console - Two makeup lights in front - Two reading lights in the overhead control unit - Two reading lights and interior light function in the grab handles in the rear - Lighting for the trunk or cargo area)
- Package: Seating comfort (various electric and manual adjustment options for the front seats to adapt to the specific body and comfort requirements of driver and front passenger - electro-pneumatic 4-way lumbar support - electric seat cushion tilt adjustment - electric height adjustment - electric backrest adjustment - electric seat cushion depth adjustment by 6 cm with leg rest pad - mechanical longitudinal adjustment - mechanical headrest adjustment)
- Upholstery: ARTICO leatherette/fabric
- Radio: Extended MBUX functions (personalization (profiles) and prediction functions - MBUX voice assistant with natural language understanding - activation via "Hey Mercedes" - learning function of the MBUX voice assistant by connecting to a cloud-based online dictionary - Wi-Fi hotspot - internet radio)
- Radio accessories: Digital radio (DAB)
- Radio accessory: Communication module (LTE) for using Mercedes me connect services (The communication module with a vehicle-integrated, LTE-enabled SIM card offers you added comfort and safety. It continuously connects you to your vehicle – and the vehicle to infrastructure such as the Mercedes-Benz server or the internet. This allows you to use services such as Mercedes me connect Live Traffic Information.)
- Wheels: 43.2 cm (17") light alloy wheels with 10-twin-spoke design (vanadium silver painted with 225/50 R 17 on 7 J x 17 ET 44.5)
- Windscreen wipers with rain sensor
- Power steering
- Seats: Heated seats for driver and front passenger (Pleasant warmth and therefore high seating and travel comfort. In cooler weather or according to your personal preference, the seat heating quickly brings the seat surfaces and backrests to a comfortable temperature. The intensity can be selected in three levels. Intelligent and convenient: The seat heating switches off automatically.)
- Telephone accessories: Smartphone integration (wirelessly connects the mobile phone to the MBUX multimedia system - display of selected third-party apps - access to current software and data, e.g., for navigation, traffic information, contact data, messaging, telephony, media, IP radio - optimized user interface for driving - control of smartphone functions via voice control)
- Pre-installation for digital key handover (Share your vehicle key even without personal handover - Decide to whom you open the vehicle and hand over the key - Use the functions conveniently in the Mercedes me app)
- Central locking with remote control
- Package: Parking package with reversing camera (12 ultrasonic sensors - reversing camera: integrated into the boot lid, display in the central display, trailer mode - Active Parking Assist with PARKTRONIC - detects free parking spaces - assisted parking - visual and acoustic warning of detected obstacles - display of camera and ultrasonic data in the central display - button for Active Parking Assist - cross traffic warning - reverse maneuvering braking - drive-away assist)
- Package: Mirror package (both exterior mirrors electrically folding (button in the driver's door control panel) - interior mirror and exterior mirror on the driver's side automatically dimming continuously - ambient lighting of the exterior mirror to illuminate the entry area with projection of the Mercedes-Benz logo)
- Package: USB (2 USB-C ports under the front center armrest, suitable for data transfer)
- Radio: MBUX multimedia system (instrument display with 17.78 cm (7") diagonal - media display with 17.78 cm (7") diagonal and touch function - touch control buttons on the steering wheel - radio (FM/AM) - USB interface in the center console under the armrest - Bluetooth telephony with contact transfer and audio streaming of music files - display of vehicle functions (driver assistance systems, driving programs and vehicle settings) - favorites storage - smartphone-related voice control)
- Radio accessories: Central display (touchscreen display with LCD technology - 30.2 cm (11.9") screen diagonal - resolution of 1,624 x 1,728 pixels (width x height) - tilted 6° - 7° towards the driver)
- Tire pressure monitoring system (TPMS)
- Remote Services (Communication module - Mercedes me services: -Programming of auxiliary heating/ventilation: -Remote door locking and unlocking -Sunroof/windows with remote locking and opening including ventilation function -Personalization -Vehicle location -Vehicle tracking -Geographic vehicle monitoring -Parking service monitoring -Find function (Remote Vehicle Finder))
- Seats: Rear seat backrests foldable
- Lane Keeping Assist, active
- Telephone accessories: Wireless charging system for mobile devices (wireless charging according to Qi standard for compatible mobile phones - fast connection setup between multimedia system and mobile phone via Near Field Communication (NFC) for identification of the mobile device - storage compartment for wireless charging is located in the storage compartment at the front of the center console)
- Cruise control
- TIREFIT with tire inflation compressor
- Fully digital instrument display (Freestanding, fully digital instrument display with a 26 cm (10.25") color LCD display and a resolution of 1440 x 540 pixels)
- High-visibility vest for drivers
- Electronic immobilizer
- Decorative elements in diamond pattern, silver-grey



Extra equipment

- Airbag: Side airbags in the rear
- Heat-insulating dark tinted glass
- Upholstery: ARTICO two-tone leatherette
- Wheels: 43.2 cm (17") alloy wheels in a 5-spoke design
- Traffic Sign Assist (Networked system consisting of a camera behind the windshield and navigation maps - Early detection of maximum speed limits and display of prohibitions as well as their cancellation in the driver display and in the optionally available head-up display - Visual and, if desired, additional acoustic warning when exceeding the maximum speed limit - Can recognize no-entry signs, providing a visual and acoustic warning)

Brief expert findings

Documents submitted	At the time of the inspection, the vehicle registration certificate Part 2 (title) was available, but the vehicle registration certificate Part 1 (document) was not. (Copy)
VIN comparison	The vehicle identification number (VIN) was read from the vehicle and its conformity with the submitted documents was confirmed by the undersigned during the inspection.
Inspection	The inspection conditions were sufficient for the assessment of the vehicle. No lifting equipment or pit was available for inspecting the vehicle. Therefore, inspection of the vehicle's underside was only possible to a limited extent.
Test drive	No test drive/shunting maneuver was carried out during the inspection of the vehicle.
Engine function test	An engine test run was performed.

Value reducing factors

No.	Component group	Description
1	Roof	Roof - dent(s) - Smooth repair work
2	Door - front left side	Door edge - Scratch(es) - Smart repair
3	Door - rear right side	Door - Scratch(es) - Smart repair
4	Wheel / tyres	Wheelset - complete (Nabendeckel) - Differs from the original configuration - Replace
5	Side panel - rear right side	Side panel - Scratch(es) - Paint
6	Side panel - rear left side	Side panel (Wellig und Spachtelmasse eingefallen) - Unprofessionally repaired - Repair and paint

Wear and tear

No.	Component group	Description
1	Sill - left side	Trim - Scratch(es) - No deduction
2	Bonnet	Bonnet - dent(s) - No deduction
3	Front bumper	Front bumper - Stone chips - No deduction
4	Vehicle glazing	Windscreen - Stone chips - No deduction

The vehicle shows signs of wear and tear commensurate with its age and use.

Previous damages

No.	Previous damage	Extent of damage (Net)
1	Rear, Side - left, Provided by user / customer, from 18 Mar 2026	3.332,54 €
2	Front, Rear, Provided by user / customer, from 10 Jan 2024	14.314,32 €
3	Side - left, not professionally repaired	



Repainting

No. Repainting

- 1 Roof rail - left side, Boot lid / rear door, Door - front right side, Professionally carried out
- 2 Side panel - rear left side, Unprofessionally carried out

Paint coat thickness measurement

Roof rail - left side	162 µm	Boot lid / rear door	160 µm
Side panel - rear left side	811 µm	Door - front right side	181 µm

Order/Scope of Order

An order was placed to prepare a sales report for the described vehicle. This report includes the following:

- Description of key vehicle information
- Documentation of equipment features
(*Delivery by third-party service providers*)
- Documentation of damage, defects, missing parts
- Documentation of prior damage, unrepaired prior damage, repainting
- A brief visual or functional inspection of the equipment details, if possible.
(*Functional testing of driver assistance systems is not included in the scope of services!*)
- a photographic documentation of the vehicle

Basis for the order

This product is based on the guidelines for vehicle returns and valuations published by Alphabet Fleet GmbH. The expert makes the specific findings in each individual case objectively, within the framework of the prescribed standards, based on their own expertise.

The vehicle inspection takes place in a fully assembled, unassembled state.

Damage or defects that can only be detected during disassembly/diagnostic work or through further investigation remain within the realm of prognostic risk. An increased risk exists due to concealed defects caused by fraudulent misrepresentation and which were not identifiable by the expert.

Damage or defects resulting from normal use or wear and tear of the vehicle will be accepted in accordance with the applicable standard.

There was no explicit identification or monetary consideration of the expected features within the product.

Features which, in their nature and extent, slightly exceed normal use but do not constitute unacceptable damage, will be documented and indicated as signs of wear, if applicable.

Damage or defects that, according to the applicable standard, can no longer be attributed to normal use or wear and tear are listed under "Value Reducing Factors" in the product description.

Depending on the product specification, a monetary ID can be provided. If this takes place, the costs can be 100% d or pro rata depending on the vehicle's age and mileage.

Previous damages

An unprofessionally repaired previous damage was found at the vehicle.



Figure 1: Diagonal front (left)



Figure 2: Diagonal front (right)



Figure 3: Diagonal rear (left)



Figure 4: Diagonal rear (right)



Figure 5: Interior - front



Figure 6: Interior - rear



Figure 7: Instrument cluster



Figure 8: Instrument panel



Figure 9: Interior 360° view



Figure 10: Cargo area

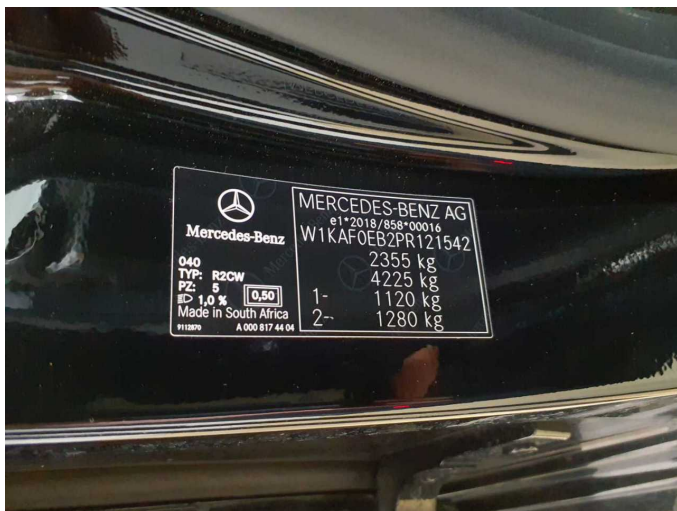


Figure 11: VIN



Figure 12: Mounted tyres



Figure 13: Documents

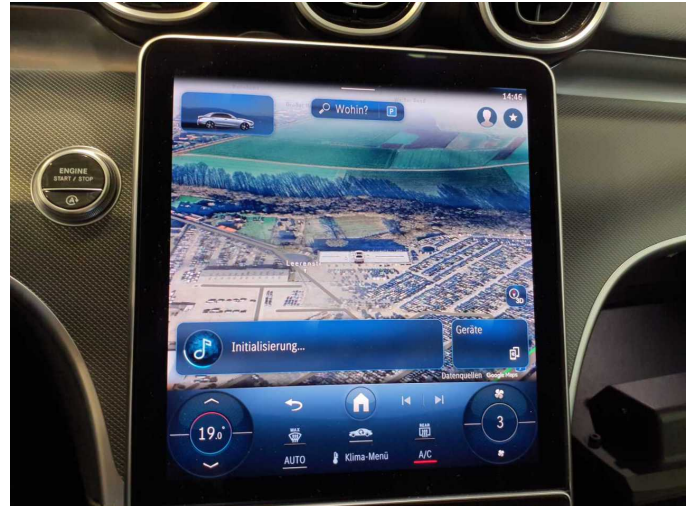


Figure 14: Navigation



Figure 15: Misc.



Figure 16: Misc.



Figure 17: Misc.



Figure 18: Misc.



Figure 19: Misc.



Figure 20: Misc.



Figure 21: Misc.



Figure 22: Misc.



Figure 23: Misc.

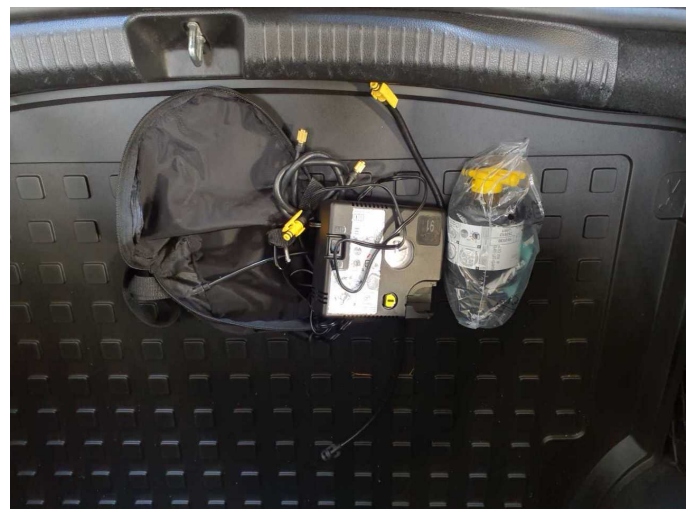


Figure 24: Misc.



Damage 1: Roof: Roof - dent(s) - Smooth repair work



Damage 1: Roof: Roof - dent(s) - Smooth repair work



Damage 1: Roof: Roof - dent(s) - Smooth repair work



Damage 2: Door - front left side: Door edge - Scratch(es) - Smart repair



Damage 2: Door - front left side: Door edge - Scratch(es) - Smart repair



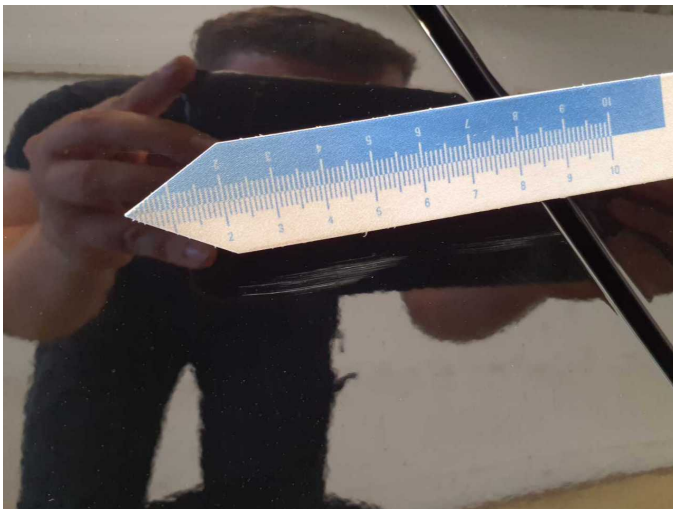
Damage 3: Door - rear right side: Door - Scratch(es) - Smart repair



Damage 3: Door - rear right side: Door - Scratch(es) - Smart repair



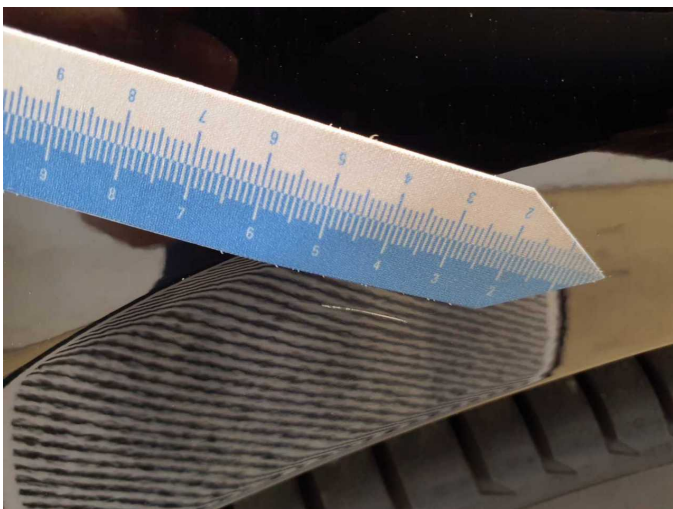
Damage 4: Wheel / tyres: Wheelset - complete (Nabendeckel) - Differs from the original configuration - Replace



Damage 5: Side panel - rear right side: Side panel - Scratch(es) - Paint



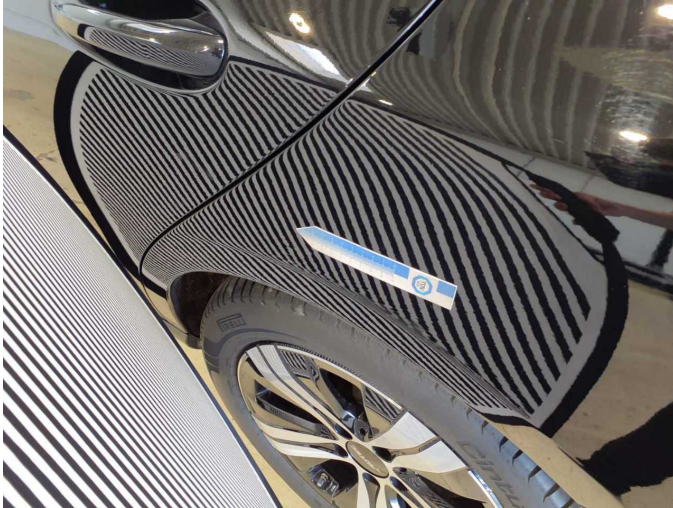
Damage 5: Side panel - rear right side: Side panel - Scratch(es) - Paint



Damage 5: Side panel - rear right side: Side panel - Scratch(es) - Paint



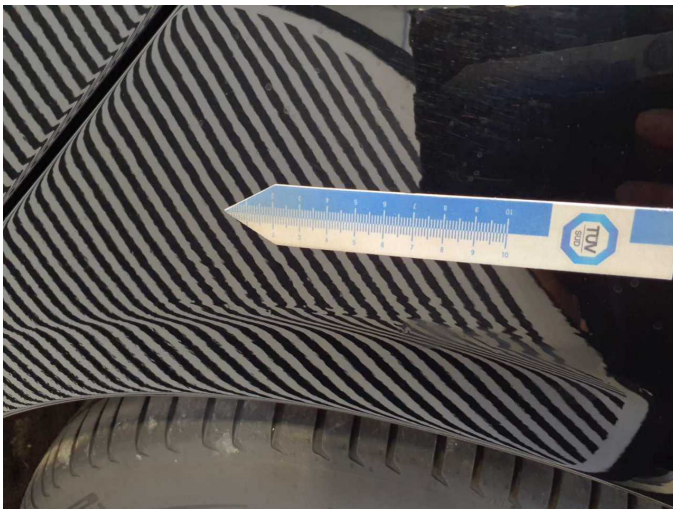
Damage 6: Side panel - rear left side: Side panel (Wellig und Spachtelmasse eingefallen) - Unprofessionally repaired - Repair and paint



Damage 6: Side panel - rear left side: Side panel (Wellig und Spachtelmasse eingefallen) - Unprofessionally repaired - Repair and paint



Damage 6: Side panel - rear left side: Side panel (Wellig und Spachtelmasse eingefallen) - Unprofessionally repaired - Repair and paint



Damage 6: Side panel - rear left side: Side panel (Wellig und Spachtelmasse eingefallen) - Unprofessionally repaired - Repair and paint



Repainting 1: Roof rail - left side, Boot lid / rear door, Door - front right side



Repainting 1: Roof rail - left side, Boot lid / rear door, Door - front right side



Repainting 1: Roof rail - left side, Boot lid / rear door, Door - front right side



Repainting 1: Roof rail - left side, Boot lid / rear door, Door - front right side



Repainting 1: Roof rail - left side, Boot lid / rear door, Door - front right side



Repainting 1: Roof rail - left side, Boot lid / rear door, Door - front right side



Repainting 2: Side panel - rear left side



Repainting 2: Side panel - rear left side