

## Expertise

Protocol number: 45521952  
Order No. / Reference: 26372183  
Inspection date: 13 May 2026

Manufacturer: Ford

Model: Focus 1.5 EcoBlue Start-Stopp-System Aut. TITANIUM X

VIN: WF0NXXGCHNPD64448



### Vehicle details

#### Manufacturer / Type / Model / Equipment

Ford Focus 1.5 EcoBlue Start-Stopp-System Aut. TITANIUM X

**Vehicle Identification number** WF0NXXGCHNPD64448

**Mileage (Read)** 52,820 km

**First registration** 19 May 2023

**Number of holders** 2

**Power / Engine displacement** 85 kw / 1,499 ccm

**Fuel type / Cylinder** Diesel / 4

**Gearbox / Number of gears** Automatic / 8

**Type of drive** Front drive

**Type of vehicle** Saloon car

**Colour / colour code** Fantastic-Rot Metallic

**Doors / Seats** 5 / 5

**Upholstery type** Cloth

**Colour of upholstery** Anthracite-Black

**Vehicle with smoke odor** no



## Vehicle details

<b>Maintenance booklet / proof</b>	digital proof / complete	<b>Next maintenance in</b>	87 %
<b>Last service on / at</b>	02/2026 at 50,941 km		
<b>Key is / should be</b>	2 / 2	<b>FZG documents</b>	ZB#2 (B) was available (copy), ZB#1 (S) was not available.
		<b>Letter No.</b>	GT890330
<b>Previous damage / Accident</b>	None detectable	<b>Repainting</b>	None detectable
<b>Inspection conditions</b>	sufficient	<b>Lifting equipment / pit</b>	yes
<b>Test drive</b>	short drive on the company premises	<b>Engine function test</b>	Performed
<b>Manufacturer key number/ type code number</b>	8566 / BYD 00002		
<b>Emission standard</b>	EURO6;WLTP;AP;PI/CI; M, N1 I	<b>fine dust sticker</b>	
<b>Permitted total weight</b>	1,910 kg	<b>Empty weight</b>	

## Tyres

### Mounted tyres

#	Tyre size	Type of tyre	Manufacturer	Tread depth
1)	205/60 R16 92V	Summer tyres on Steel rim with wheel cover	Goodyear	6mm / 6mm
2)	205/60 R16 92V	Summer tyres on Steel rim with wheel cover	Goodyear	6mm / 6mm

### Additional tyres

#	Tyre size	Type of tyre	Manufacturer	Tread depth
1)	205/60 R16 92H	Winter tyres on Light alloy	Continental	6mm / 6mm
2)	205/60 R16 92H	Winter tyres on Light alloy	Continental	7mm / 7mm

### Replacement

Typ	Tyre size	Type of tyre	Manufacturer	Tread depth
Tirefit		Expiration date 03/2027		

**Legend: Tread depth information for the left tire is listed first, for the right tire it is listed second on the axle in the direction of travel.**



## Equipment

### Standard equipment

- Airbag: Passenger airbag deactivation
- Anti-lock braking system (ABS) with electronic brake force distribution (EBD)
- Tires: 6.5 J x 16 design wheels (4) with 205/60 R16 tires
- Fabric headliner
- Diesel particulate filter (DPF)
- Tachometer
- Electronic Safety and Stability Program (ESP)
- Electric windows front and rear
- FordKeyFree system including Ford Power start function
- Luggage compartment cover
- Speed limiter
- Transmission: 8-speed automatic transmission
- Back window, heater
- Interior lighting with LED technology
- Intelligent security system
- Air conditioning with automatic temperature control
- Headrests: 2 front and 3 rear, height adjustable
- LED taillights
- Steering wheel: 3-spoke design
- Make-up mirrors in driver and passenger sun visors
- Center console "Premium" front
- Navigation: Ford SYNC 4 including Ford navigation system with AppLink, 13.2" touchscreen and DAB/DAB+
- Upholstery: Cloth
- Pre-Collision Assist
- Tire Pressure Monitoring System (TMPS)
- Windscreen wipers with rain sensor (sensitivity adjustable)
- Headlight assistant with day/night sensor
- Selective driving mode switch
- Electromechanical speed-dependent power steering
- Seats: Driver's seat height adjustable
- Seats: Front sports seats with enhanced lateral support
- Phone accessories: Inductive charging station for mobile devices
- Variable radiator air intake
- Electronic immobilizer
- Central locking with remote control and remote luggage compartment release
- Ambient lighting, front
- Exterior mirrors painted in body color, electrically adjustable, heated and foldable
- Hill start assist
- Roof spoiler painted in car color
- Digital instrument panel 12.3" (31.2 cm screen diagonal)
- Electronic Shifter
- Lane keeping assist including lane keeping assist
- Electric parking brake with auto-hold function
- FordPass Connect including live traffic information
- Luggage compartment lighting
- Cruise control
- Illuminated glove compartment
- rear window wiper
- Interior mirror, automatically dimming
- Isofix bracket
- Knee pads on the center console
- Paint finish: Solid
- LED headlights
- Adjustable steering column
- Armrest - centre, rear
- MyKey key system (individually programmable second key)
- Emergency call assistant
- Front and rear parking pilot system
- Post-Collision Assist
- Tire repair kit
- Rear view camera
- Headlight low beam
- Side windows from the 2nd row of seats and rear window, dark tinted.
- Seats: Passenger seat height-adjustable, manually
- Seats: Rear seat backrest
- Start-stop system
- Carpet floor mats front and rear, velour
- 2 USB ports in the center console, rear
- Warning system for unfastened seat belts for the 1st and 2nd rows of seats



### Extra equipment

- Paint finish: Fantastic Red Metallic
- Package: Winter (heated windscreen - heated steering wheel - individually and variably heated front seats)
- Winter complete wheels
- Package: Driver Assistance Package II (Drive Assist Intelligent adaptive cruise control Lane keeping assist Traffic jam assist with Stop&Go Traffic sign recognition Wrong-way driver warning radio Evasive steering assist Distance display and distance warning Driver drowsiness detection High beam assist (in conjunction with adaptive LED matrix headlights with glare-free high beam assist) Blind spot assist with cross traffic alert including emergency braking function (when reversing out of parking spaces) and trailer recognition Rear view camera with split view Electrically folding exterior mirrors with surround view)

### Brief expert findings

Documents submitted	At the time of the inspection, the vehicle registration certificate Part 2 (title) was available, but the vehicle registration certificate Part 1 (document) was not. (Copy)
VIN comparison	The vehicle identification number (VIN) was read from the vehicle and its conformity with the submitted documents was confirmed by the undersigned during the inspection.
Inspection	The inspection conditions were sufficient for the assessment of the vehicle. Lifting equipment and/or a pit were available for examining the vehicle.
Test drive	A short maneuvering and shunting exercise was carried out on the company premises.
Engine function test	An engine test run was performed.

### Value reducing factors

No.	Component group	Description
1	Bonnet	Bonnet (Folgekosten möglich) - Scratch(es) - Conditioning
2	Door - rear left side	Door - dent(s) - Smooth repair work
3	Sill - left side	Sill - Scratch(es) - Smart repair
4	Mudguard - left side	Mudguard - left side - Scratch(es) - Smart repair
5	Roof	Roof - Dent / paintcoat damage - Repair and paint

### Wear and tear

No.	Component group	Description
1	Front bumper	Front bumper - Stone chips - No deduction
2	Door - rear right side	Door - Scratch(es) - No deduction
3	Boot lid / rear door	Boot lid - Scratch(es) - No deduction
4	Wheel / tyres	Wheel cover - rear left side - Scratch(es) - No deduction
5	Wheel / tyres	Wheel cover - front right side - Scratch(es) - No deduction

The vehicle shows signs of wear and tear commensurate with its age and use.



## Order/Scope of Order

An order was placed to prepare a sales report for the described vehicle. This report includes the following:

- Description of key vehicle information
- Documentation of equipment features  
(*Delivery by third-party service providers*)
- Documentation of damage, defects, missing parts
- Documentation of prior damage, unrepaired prior damage, repainting
- A brief visual or functional inspection of the equipment details, if possible.  
(*Functional testing of driver assistance systems is not included in the scope of services!*)
- a photographic documentation of the vehicle

## Basis for the order

This product is based on the guidelines for vehicle returns and valuations published by Alphabet Fleet GmbH. The expert makes the specific findings in each individual case objectively, within the framework of the prescribed standards, based on their own expertise.

The vehicle inspection takes place in a fully assembled, unassembled state.

Damage or defects that can only be detected during disassembly/diagnostic work or through further investigation remain within the realm of prognostic risk. An increased risk exists due to concealed defects caused by fraudulent misrepresentation and which were not identifiable by the expert.

Damage or defects resulting from normal use or wear and tear of the vehicle will be accepted in accordance with the applicable standard.

There was no explicit identification or monetary consideration of the expected features within the product.

Features which, in their nature and extent, slightly exceed normal use but do not constitute unacceptable damage, will be documented and indicated as signs of wear, if applicable.

Damage or defects that, according to the applicable standard, can no longer be attributed to normal use or wear and tear are listed under "Value Reducing Factors" in the product description.

Depending on the product specification, a monetary ID can be provided. If this takes place, the costs can be 100% d or pro rata depending on the vehicle's age and mileage.

## Previous damages

No apparent prior damage that had been repaired could be found on the vehicle.

## Comments

Der beiliegende Winterradsatz ist Bestandteil der Auslieferungsumfangs.



Figure 1: Diagonal front (left)



Figure 2: Diagonal front (right)



Figure 3: Diagonal rear (left)



Figure 4: Diagonal rear (right)



Figure 5: Interior - front

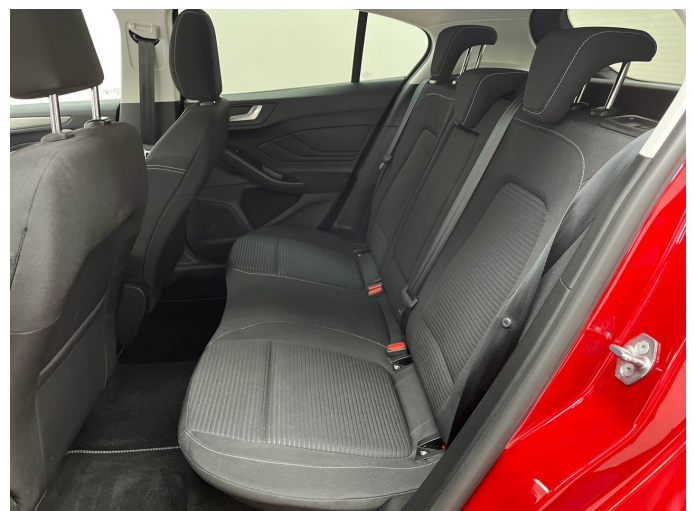


Figure 6: Interior - rear



Figure 7: Instrument cluster



Figure 8: Instrument panel



Figure 9: Interior 360° view



Figure 10: Cargo area



Figure 11: VIN



Figure 12: Mounted tyres



Figure 13: Documents

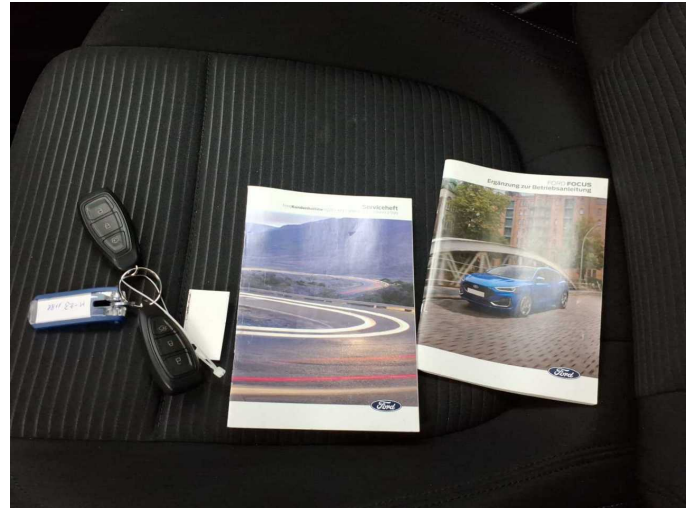


Figure 14: Documents



Figure 15: Additional tyres

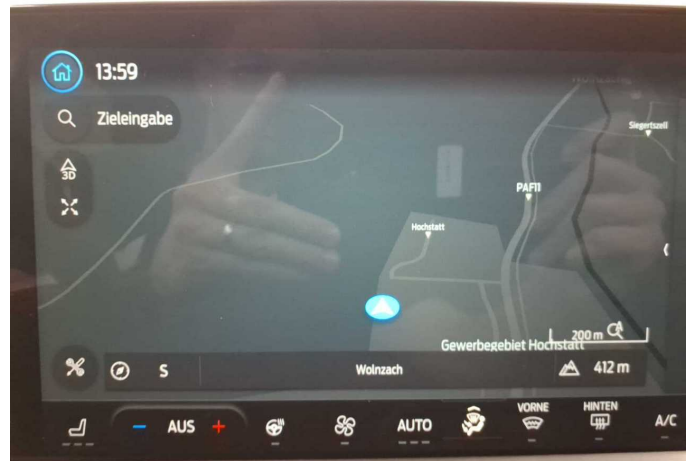


Figure 16: Navigation



Figure 17: Misc.



Figure 18: Misc.



Figure 19: Misc.



Figure 20: Misc.



Figure 21: Misc.



Figure 22: Misc.

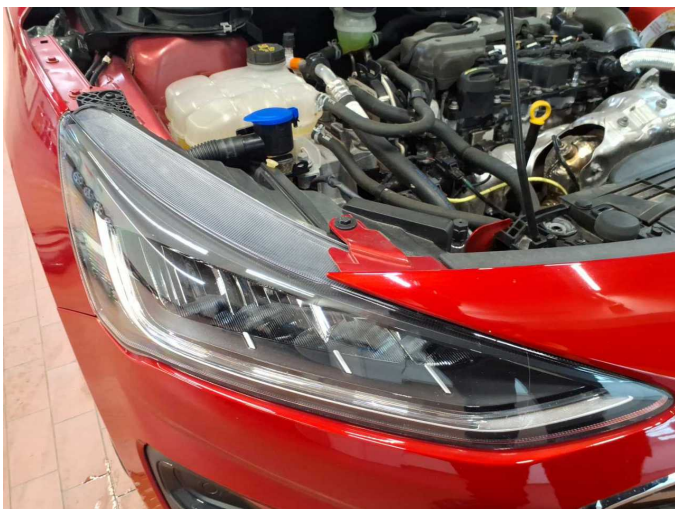


Figure 23: Misc.



Figure 24: Misc.



Figure 25: Misc.



Figure 26: Misc.

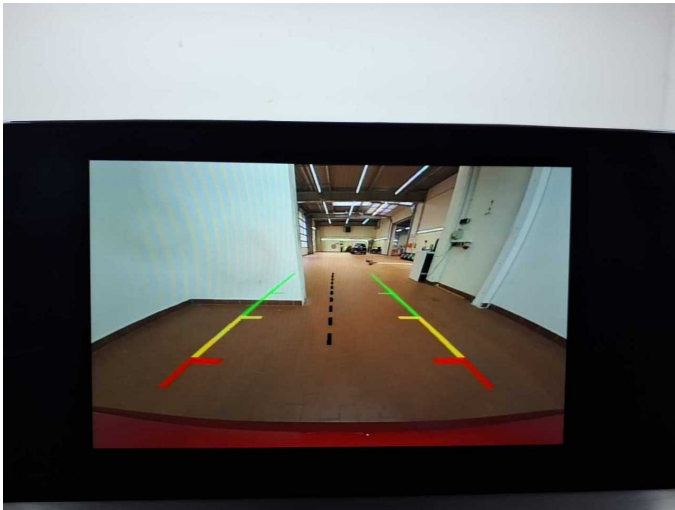


Figure 27: Misc.



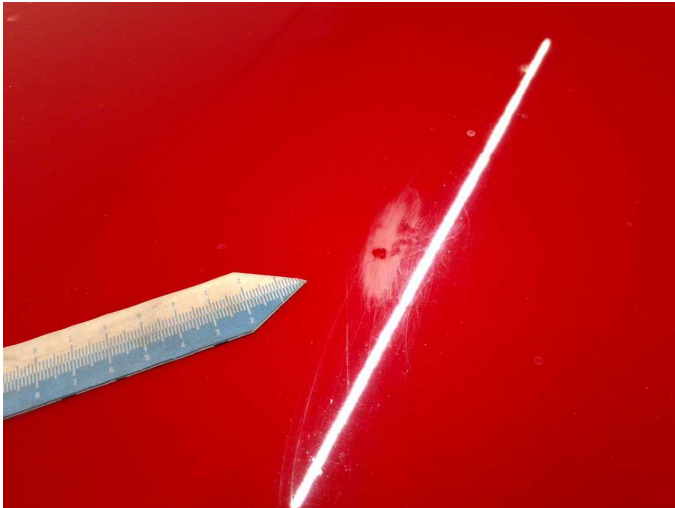
Figure 28: Misc.



Figure 29: Misc.



Figure 30: Misc.



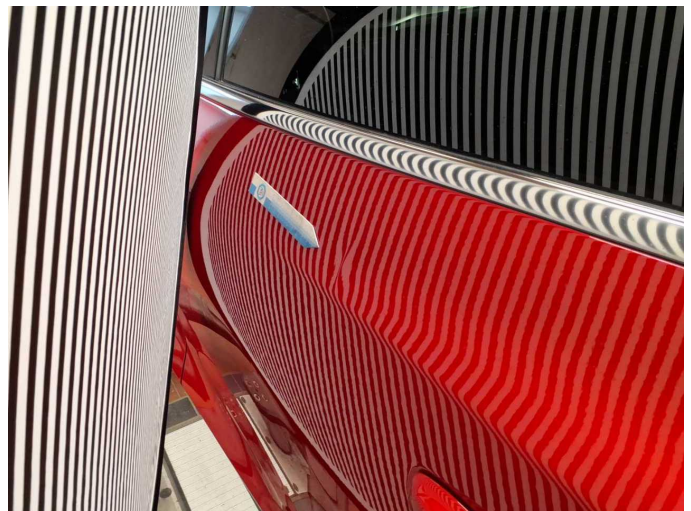
**Damage 1:** Bonnet: Bonnet (Folgekosten möglich) - Scratch(es) - Conditioning



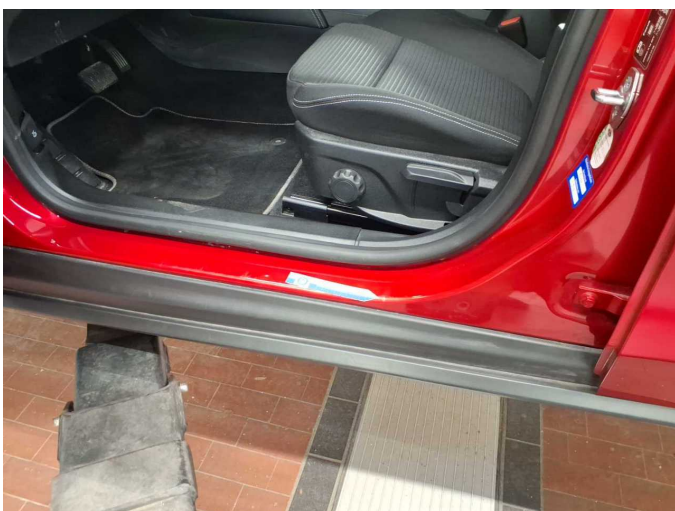
**Damage 1:** Bonnet: Bonnet (Folgekosten möglich) - Scratch(es) - Conditioning



**Damage 2:** Door - rear left side: Door - dent(s) - Smooth repair work



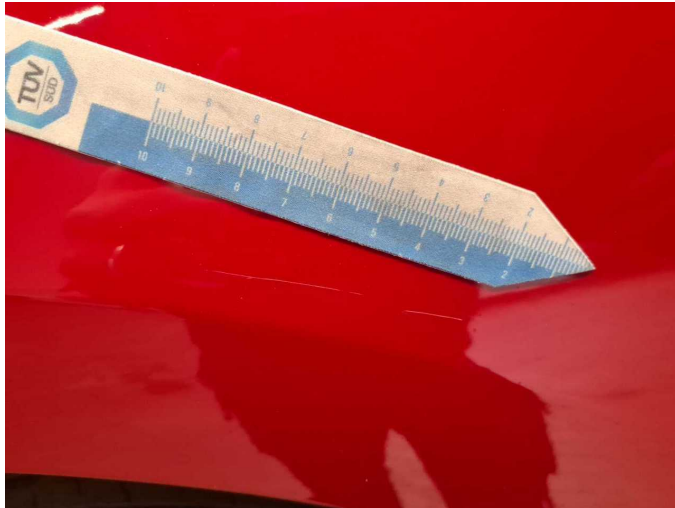
**Damage 2:** Door - rear left side: Door - dent(s) - Smooth repair work



**Damage 3:** Sill - left side: Sill - Scratch(es) - Smart repair



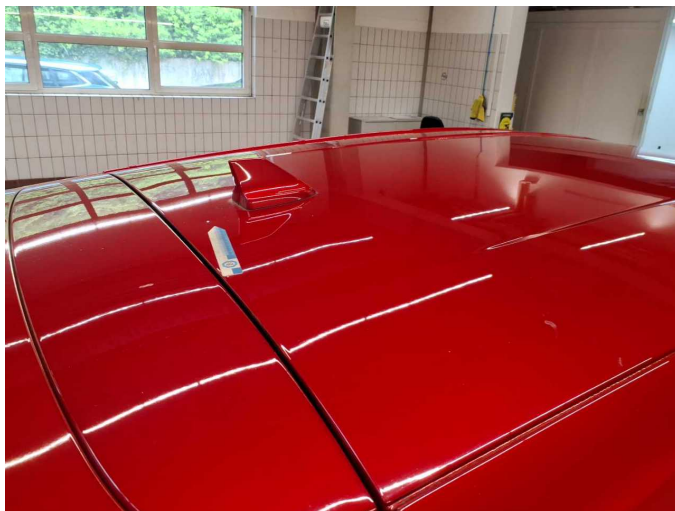
**Damage 3:** Sill - left side: Sill - Scratch(es) - Smart repair



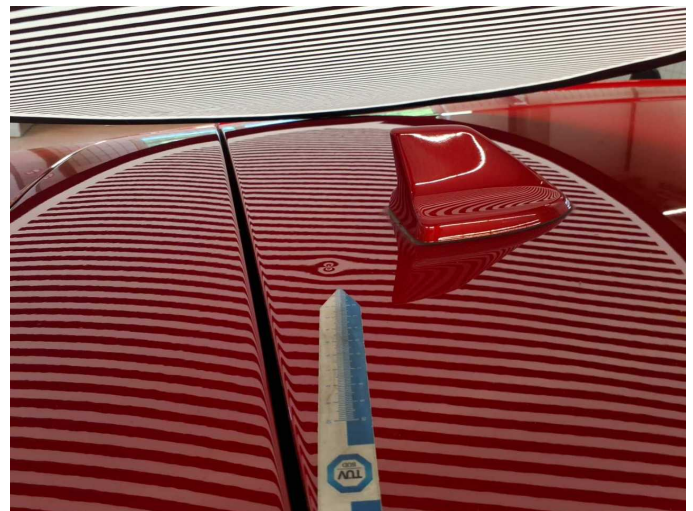
**Damage 4:** Mudguard - left side: Mudguard - left side - Scratch(es) - Smart repair



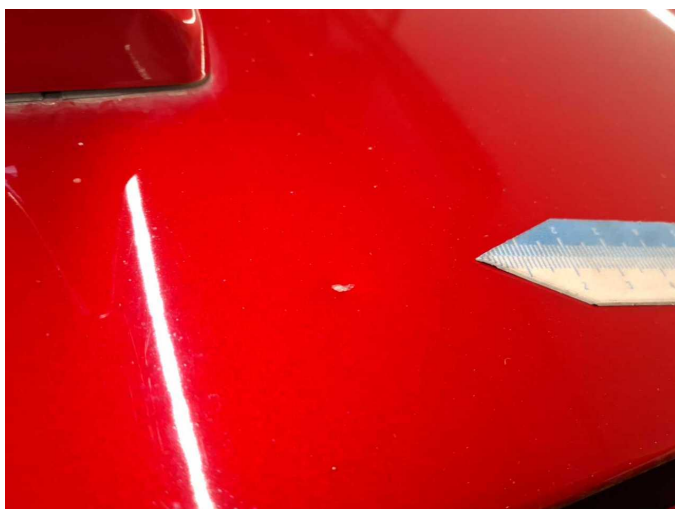
**Damage 4:** Mudguard - left side: Mudguard - left side - Scratch(es) - Smart repair



**Damage 5:** Roof: Roof - Dent / paintcoat damage - Repair and paint



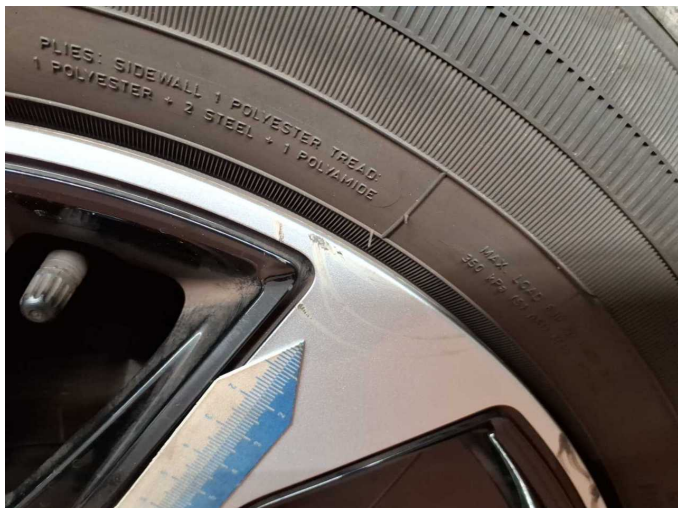
**Damage 5:** Roof: Roof - Dent / paintcoat damage - Repair and paint



**Damage 5:** Roof: Roof - Dent / paintcoat damage - Repair and paint



**Wear and tear 5:** Wheel / tyres: Wheel cover - front right side - Scratch(es) - No deduction



**Wear and tear 5:** Wheel / tyres: Wheel cover - front right side -  
Scratch(es) - No deduction



# Wartungshistorie

(gemäß Auftraggeber Informationen)

Fahrgestellnummer: WF0NXXGCHNPD64448  
Hersteller / Modell: FORD FORD Focus 1.5 EcoBlue Start-Stopp-System Aut.  
TITANIUM X

Datum	KM-Stand	Beschreibung
04.02.2026	50.941	Bremse Sonstiges; Bremsklötze vorne; Bremsscheiben + Klötze v; Bremsscheiben vorne; Motoröl b. Wartung; Ölwechsel; Wartung Sonstiges
12.09.2024	34.157	Motoröl b. Wartung; Ölfilter ern; Regelwartungsdienst; Wartung Sonstiges