

Expertise

Protocol number: 46022690
Order No. / Reference: 26445255
Inspection date: 18 Jun 2026

Manufacturer: Skoda

Model: Kodiaq 2.0 TDI DSG Style

VIN: TMBJJ7NS1P8026557



Vehicle details

Manufacturer / Type / Model / Equipment

Skoda Kodiaq 2.0 TDI DSG Style

Vehicle Identification number TMBJJ7NS1P8026557

Mileage (Read) 102,524 km

First registration 9 May 2023

Number of holders 1

Power / Engine displacement 110 kw / 1,968 ccm

Fuel type / Cylinder Diesel / 4

Gearbox / Number of gears Automatic / 7

Type of drive Front drive

Type of vehicle SUV

Colour / colour code Lava-Blau Metallic

Doors / Seats 5 / 5

Upholstery type Cloth / leather combination

Colour of upholstery Black-Grey



Vehicle details

Maintenance booklet / proof	digital evidence / incomplete	Next maintenance in	-9,300 km
Key is / should be	2 / 2	FZG documents	ZB#2 (B) was available (copy), ZB#1 (S) was not available.
		Letter No.	GQ568080
Previous damage / Accident	None detectable	Repainting	None detectable
Inspection conditions	sufficient	Lifting equipment / pit	No
Test drive	Not performed	Engine function test	Performed
Manufacturer key number/ type code number	8004 / ART 04049		
Emission standard	EURO6;WLTP;AP;PI/CI; M, N1 I	fine dust sticker	
Permitted total weight	2,359 kg	Empty weight	

Tyres

Mounted tyres

#	Tyre size	Type of tyre	Manufacturer	Tread depth
1)	235/55 R18 104H	Winter tyres on Light alloy	Pirelli	5mm / 5mm
2)	235/55 R18 104H	Winter tyres on Light alloy	Pirelli	6mm / 6mm

Additional tyres

#	Tyre size	Type of tyre	Manufacturer	Tread depth
1)	235/55 R18 100V	Summer tyres on Light alloy	Continental	3mm / 3mm
2)	235/55 R18 100V	Summer tyres on Light alloy	Continental	5mm / 5mm

Replacement

Typ	Tyre size	Type of tyre	Manufacturer	Tread depth
Tirefit		Expiration date 10/2026		

Legend: Tread depth information for the left tire is listed first, for the right tire it is listed second on the axle in the direction of travel.



Equipment

Standard equipment

- 12V socket in the center console and in the trunk
- Storage compartments behind the wheel arches in the trunk
- Airbag, driver's knee airbag
- Airbag, front side airbags
- Anti-lock braking system (ABS)
- Dashboard in black / black, door trim in black
- Electrically adjustable and heated exterior mirrors with integrated side indicators
- Hydraulic brake assist (HBA)
- Grey headliner
- Decorative inlay Linear Diamonds
- Digital Cockpit (8")
- Third brake light
- eCall
- Electronic transverse differential lock (XDS+)
- Driving light assistant and rain sensor
- High Beam Assist (Light Assist)
- Front footwell lighting
- Closed storage compartment on the driver's side
- Transmission: 7-speed dual-clutch transmission (DSG)
- Illuminated glove compartment
- Kessy - keyless entry and start-stop system
- Boot cover, roll-up and removable
- LED matrix headlights and dynamic high beam assist (Light Assist)
- Steering wheel: Leather steering wheel with multifunction buttons including paddle shifters.
- Front center armrest, including storage compartment
- Multi-collision brake
- Upholstery: Fabric-leather
- Radio accessories: 8 speakers
- Radio accessories: Wireless SmartLink
- Tire pressure monitoring
- Rear seat backrest split 60:40, foldable, longitudinally adjustable, backrest angle adjustable
- Electromechanical power steering
- Seats: Heated front seats
- Seats: Electrically adjustable front seats with memory function
- Skoda Care Connect
- Sun visor on driver and passenger side with illuminated vanity mirror
- Front door sill trims
- Variable fastening concept in the trunk
- Immobiliser
- Storage compartment on the left wheel arch
- front aero windshield wipers
- Airbag, driver and passenger
- Airbag, head airbags
- Allergen filter
- Traction control (ASR)
- Electrically folding exterior mirrors including interior and driver's side mirrors with automatic dimming
- Hill start assist
- Care Connect: Proactive services (10-year term)
- Roof rails, anodized
- Diesel particulate filter
- Tachometer
- Easy Start (start-stop button)
- Electronic parking brake including auto-hold function
- ESC Electronic Stability Control
- Electric windows front and rear
- Front radar assistant including city emergency braking function with pedestrian detection
- Cruise control
- Tinted windows
- Isofix anchorage on the outer rear seats including top tether
- Front and rear headrests are height-adjustable.
- LED taillights in crystal glass look with animated turn signals
- Reading lights at the front of the headliner
- Rear center armrest with cup holders
- Engine drag torque control (MSR)
- Front and rear parking sensors
- Wheel arch cover
- Radio accessories: Digital radio reception DAB+
- Tire Mobility Kit
- Wheels: 18" Elbrus alloy wheels
- Heated windshield washer nozzles, front
- Headlights washer / wiper system
- Kodiaq seat belts
- Seats: Adjustable lumbar support in the front seats
- Seats: Height-adjustable front seats
- Seats: Remote release of the rear seat backrests (2nd row) in the boot
- Speed limiter
- Telephone: Convenient hands-free telephone system including phone box
- Lashing eyes in the trunk
- Central locking with remote control



Extra equipment

- Swiveling trailer hitch (with electric release, including trailer stabilization)
- Anti-theft alarm system with SAFE system incl. Kessy & Easy Start (interior monitoring and tilt sensor incl. Kessy & Easy Start)
- Driving profile selection
- Paint finish: Metallic / Pearl effect
- Steering wheel: Heated steering wheel (height and reach adjustable leather steering wheel with multifunction buttons including paddle shifters)
- Package: Family (Removable waste bin for the door panel - Sunshades for the rear side windows - Door edge protectors)
- Electric panoramic sunroof including sunshade (no glasses compartment in the headliner)
- Rear view camera
- Seats: Heated front and outer rear seats
- Auxiliary heating
- Running boards
- Windscreen, wirelessly heated
- Traveller Plus (DSG) assistance system (Predictive Adaptive Cruise Control pACC (control range up to 210 km/h) - Lane Assist - Adaptive Lane Guidance - Park Assist - Traffic Jam and Emergency Assist - Traffic Sign Recognition)
- Climatronic air conditioning (3-zone) (fully automatic, separately adjustable for driver, front passenger and rear seats, including humidity sensor and odor and allergen filter)
- Package: Business Columbus (Style) (Dynamic radio navigation system Columbus - 9.2" capacitive color display - Digital Cockpit Plus (10") - Driver fatigue detection - 230V socket and one USB charging port (Type-C) - Electric tailgate operation including comfort opening - Sunset - Luggage net partition - Infotainment Online (3-year subscription))
- Seats: Folding tables on the front seatbacks
- Tablet holder in the rear
- Variable loading floor in the trunk

Brief expert findings

Documents submitted	At the time of the inspection, the vehicle registration certificate Part 2 (title) was available, but the vehicle registration certificate Part 1 (document) was not. (Copy)
VIN comparison	The vehicle identification number (VIN) was read from the vehicle and its conformity with the submitted documents was confirmed by the undersigned during the inspection.
Inspection	The inspection conditions were sufficient for the assessment of the vehicle. No lifting equipment or pit was available for inspecting the vehicle. Therefore, inspection of the vehicle's underside was only possible to a limited extent.
Test drive	No test drive/shunting maneuver was carried out during the inspection of the vehicle.
Engine function test	An engine test run was performed.

Value reducing factors

No.	Component group	Description
1	Wheel / tyres	Alloy rim - rear left side (nicht Bestandteil der Ausstattung) - Scratch(es) - No deduction
2	Wheel / tyres	Alloy rim - front left side (nicht Bestandteil der Ausstattung) - Scratch(es) - No deduction
3	Misc.	Inspection / maintenance - No evidence - No deduction
4	2nd wheel set	1 tyre (Außenflanke abgefahren) - Expired - Replace
5	Misc.	Inspection / maintenance - Expired - Perform
6	Door - front right side	Door - Scratch(es) - Paint
7	Door - front left side	Door - Scratch(es) - Paint
8	Bonnet	Bonnet - Scratch(es) - Paint
9	Vehicle glazing	Windscreen - Broken / torn - Replace



Wear and tear

No.	Component group	Description
1	Front bumper	Front bumper - Stone chips - No deduction
2	Sill - left side	Sill - Scratch(es) - No deduction
3	Interior	Interior - Scratch(es) - No deduction
4	Rear bumper	Rear bumper - Scratch(es) - No deduction

The vehicle shows signs of wear and tear commensurate with its age and use.

Missing parts

Description

Equipment - Umbrella

Documents - Log book

Order/Scope of Order

An order was placed to prepare a sales report for the described vehicle. This report includes the following:

- Description of key vehicle information
- Documentation of equipment features
(*Delivery by third-party service providers*)
- Documentation of damage, defects, missing parts
- Documentation of prior damage, unrepaired prior damage, repainting
- A brief visual or functional inspection of the equipment details, if possible.
(*Functional testing of driver assistance systems is not included in the scope of services!*)
- a photographic documentation of the vehicle

Basis for the order

This product is based on the guidelines for vehicle returns and valuations published by Alphabet Fleet GmbH. The expert makes the specific findings in each individual case objectively, within the framework of the prescribed standards, based on their own expertise.

The vehicle inspection takes place in a fully assembled, unassembled state.

Damage or defects that can only be detected during disassembly/diagnostic work or through further investigation remain within the realm of prognostic risk. An increased risk exists due to concealed defects caused by fraudulent misrepresentation and which were not identifiable by the expert.

Damage or defects resulting from normal use or wear and tear of the vehicle will be accepted in accordance with the applicable standard.

There was no explicit identification or monetary consideration of the expected features within the product.

Features which, in their nature and extent, slightly exceed normal use but do not constitute unacceptable damage, will be documented and indicated as signs of wear, if applicable.

Damage or defects that, according to the applicable standard, can no longer be attributed to normal use or wear and tear are listed under "Value Reducing Factors" in the product description.

Depending on the product specification, a monetary ID can be provided. If this takes place, the costs can be 100% d or pro rata depending on the vehicle's age and mileage.

Previous damages

No apparent prior damage that had been repaired could be found on the vehicle.



Comments

- Die Unterbodenbesichtigung war nur ebenerdig & eingeschränkt möglich. Mehrkosten möglich.
- Der Winterradsatz ist kein Bestandteil der Ausstattungsliste.



Figure 1: Diagonal front (left)



Figure 2: Diagonal front (right)



Figure 3: Diagonal rear (left)



Figure 4: Diagonal rear (right)

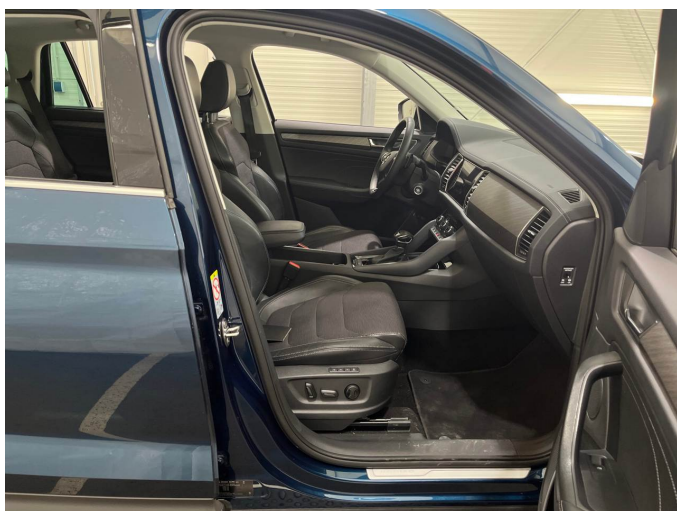


Figure 5: Interior - front

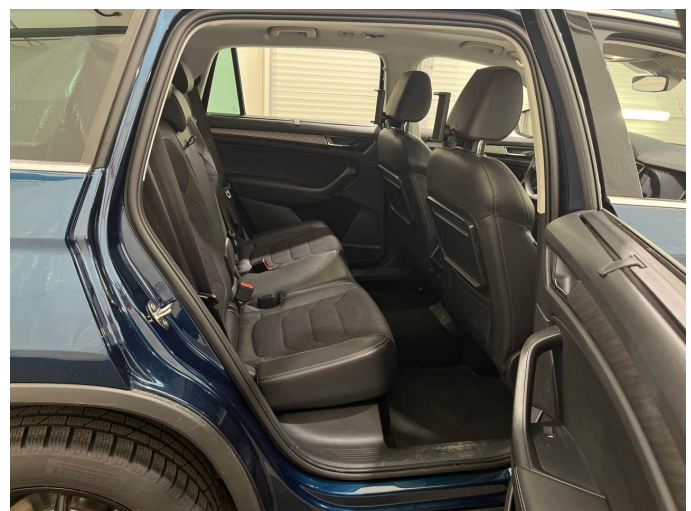


Figure 6: Interior - rear



Figure 7: Instrument cluster



Figure 8: Instrument panel



Figure 9: Interior 360° view



Figure 10: Cargo area

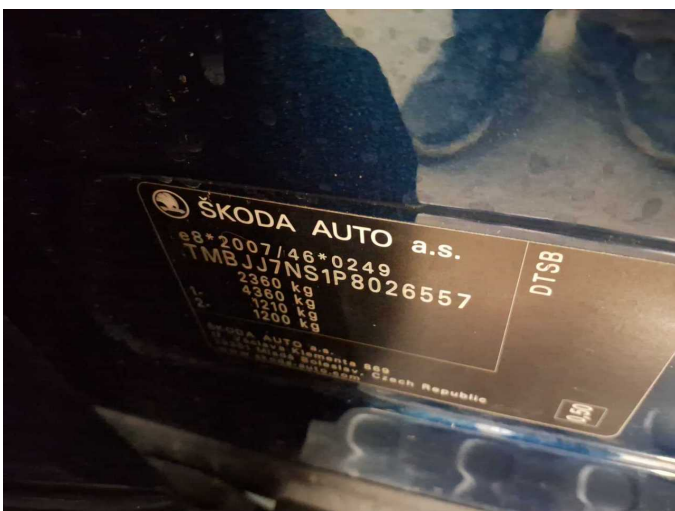


Figure 11: VIN



Figure 12: Mounted tyres



Figure 13: Documents



Figure 14: Additional tyres

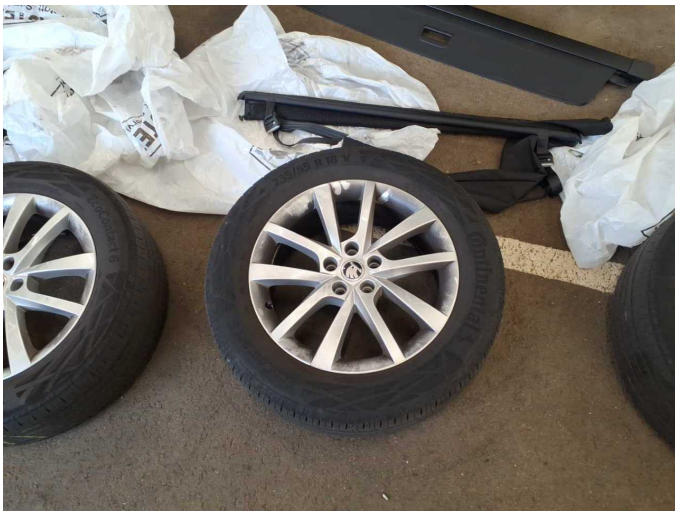


Figure 15: Additional tyres



Figure 16: Navigation



Figure 17: Misc.



Figure 18: Misc.



Figure 19: Misc.



Figure 20: Misc.



Figure 21: Misc.

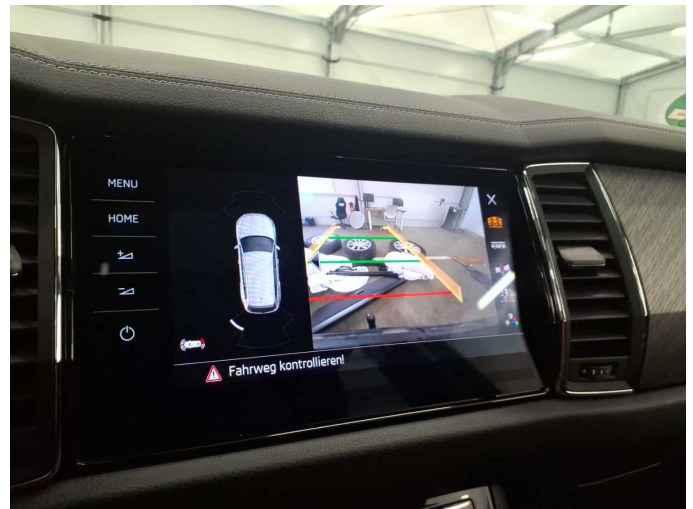


Figure 22: Misc.



Figure 23: Misc.



Figure 24: Misc.



Figure 25: Misc.



Figure 26: Misc.



Figure 27: Misc.



Damage 1: Wheel / tyres: Alloy rim - rear left side (nicht Bestandteil der Ausstattung) - Scratch(es) - No deduction



Damage 2: Wheel / tyres: Alloy rim - front left side (nicht Bestandteil der Ausstattung) - Scratch(es) - No deduction



Damage 4: 2nd wheel set: 1 tyre (Außenflanke abgefahren) - Expired - Replace



Damage 4: 2nd wheel set: 1 tyre (Außenflanke abgefahren) - Expired - Replace



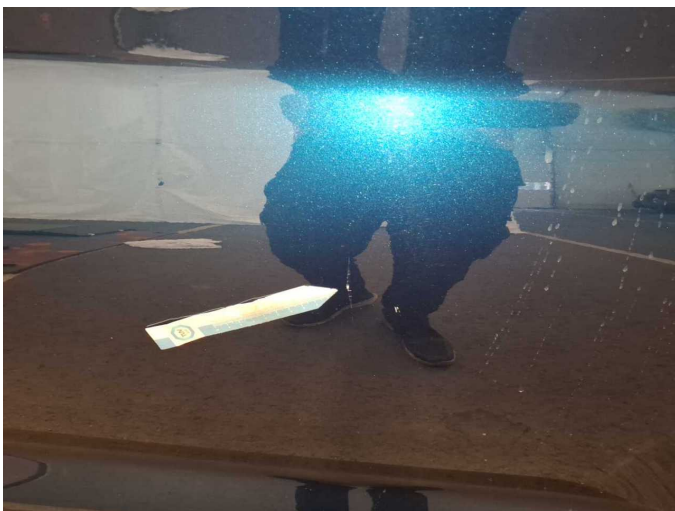
Damage 4: 2nd wheel set: 1 tyre (Außenflanke abgefahren) - Expired - Replace



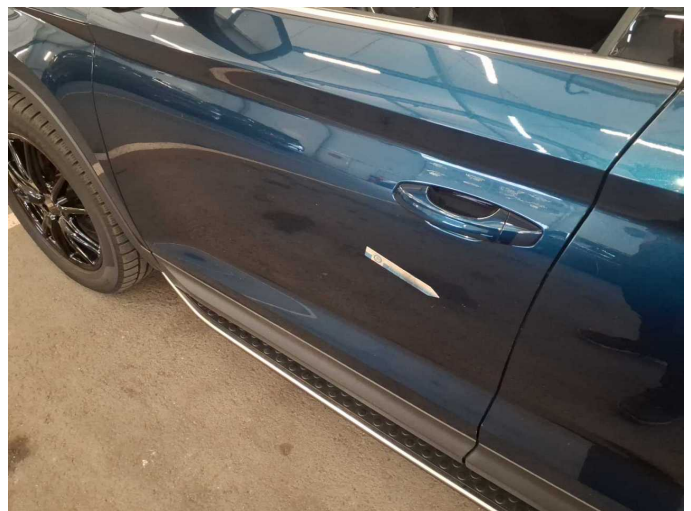
Damage 5: Misc.: Inspection / maintenance - Expired - Perform



Damage 6: Door - front right side: Door - Scratch(es) - Paint



Damage 6: Door - front right side: Door - Scratch(es) - Paint



Damage 7: Door - front left side: Door - Scratch(es) - Paint



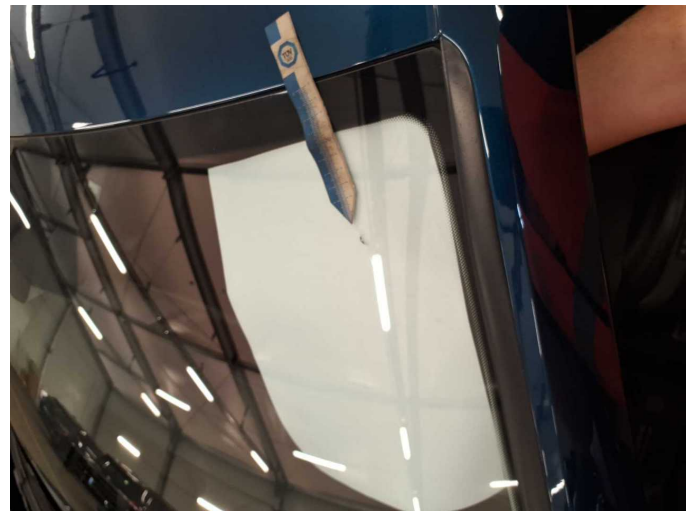
Damage 7: Door - front left side: Door - Scratch(es) - Paint



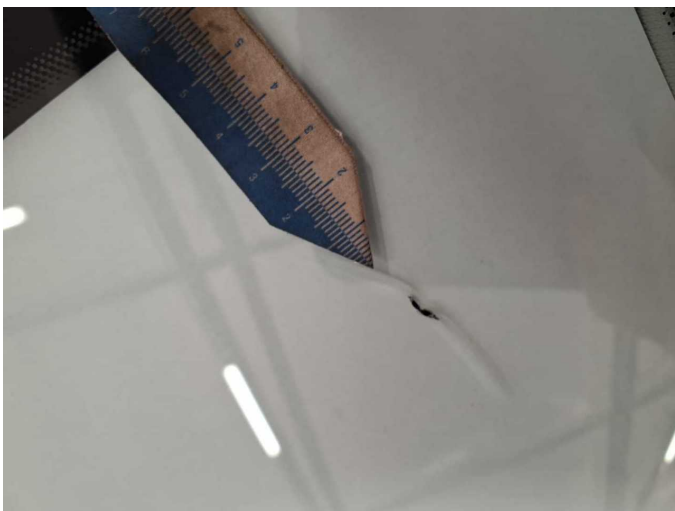
Damage 8: Bonnet: Bonnet - Scratch(es) - Paint



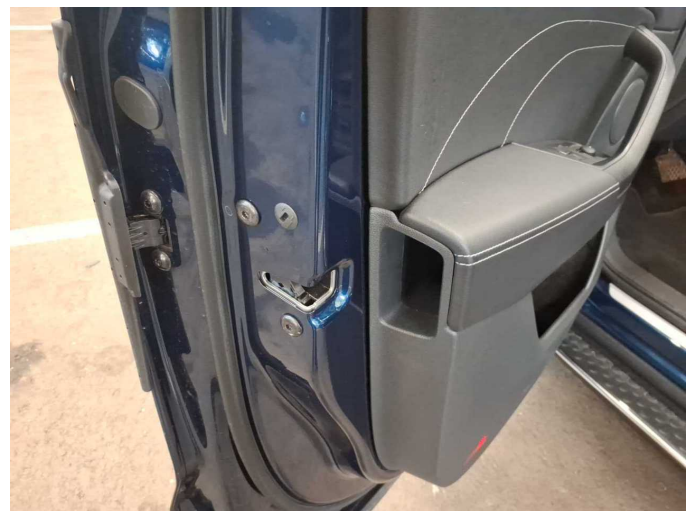
Damage 8: Bonnet: Bonnet - Scratch(es) - Paint



Damage 9: Vehicle glazing: Windscreen - Broken / torn - Replace



Damage 9: Vehicle glazing: Windscreen - Broken / torn - Replace



Missing part 1: Equipment: Umbrella - Missing - Replace



Missing part 1: Equipment: Umbrella - Missing - Replace



Missing part 2: Documents: Log book - Missing - Replace