

Expertise

Manufacturer: Tesla

Model: Model Y Long Range Dual Motor AWD

VIN: XP7YGCEK4PB069097



Vehicle details

Manufacturer / Type / Model / Equipment

Tesla Model Y Long Range Dual Motor AWD

Vehicle Identification number XP7YGCEK4PB069097

Mileage (Read) 45,355 km

First registration 8 Mar 2023

Number of holders 1

Power / Engine displacement 153 kw / 0 ccm

Fuel type / Cylinder Electric / 0

Gearbox / Number of gears Direct drive / 1

Type of drive All-wheel drive

Type of vehicle Saloon car

Colour / colour code Pearl White Multi-Coat

Doors / Seats 5 / 5

Upholstery type Artificial leather

Colour of upholstery Black

Vehicle details

Maintenance booklet / proof	Non-existent	Next maintenance in	
Key is / should be	2 / 2	FZG documents	ZB#2 (B) was available (copy), ZB#1 (S) was not available.
		Letter No.	GV116864
Previous damage / Accident	Detectable	Repainting	None detectable
Inspection conditions	sufficient	Lifting equipment / pit	yes
Test drive	Not performed	Engine function test	Performed
Manufacturer key number/ type code number	1480 / ABD 00022		
Emission standard	2017/1151;WLTP;reine Elektrofz	fine dust sticker	
Permitted total weight	2,518 kg	Empty weight	

Tyres

Mounted tyres

#	Tyre size	Type of tyre	Manufacturer	Tread depth
1)	255/45 R19 104W	Winter tyres on Light alloy	Pirelli	5mm / 5mm
2)	255/45 R19 104W	Winter tyres on Light alloy	Pirelli	6mm / 6mm

Additional tyres

#	Tyre size	Type of tyre	Manufacturer	Tread depth
1)	255/45 R19 104W	Summer tyres on Light alloy	Hankook	4mm / 4mm
2)	255/45 R19 104W	Summer tyres on Light alloy	Hankook	5mm / 5mm

Legend: Tread depth information for the left tire is listed first, for the right tire it is listed second on the axle in the direction of travel.

Equipment

Standard equipment

- Airbags (Six airbags: driver and passenger side, side airbags and curtain airbags)
- Anti-lock braking system (ABS)
- Autopilot Basic (Steering Assist: Helps steer in a clearly marked lane and uses adaptive cruise control. - Adaptive Cruise Control: Adjusts your vehicle's speed to that of the surrounding traffic.)
- Dual motor all-wheel drive
- Electric window regulators (with push-button automatic operation)
- Glass roof: Tinted glass roof (with UV and infrared protection layer)
- Rear window and rear side windows heavily tinted
- Individual driver profiles
- Infotainment: 15.4" center touchscreen in the front (real-time visualization of the surroundings while driving, displaying speed limit signs, upcoming traffic lights, pedestrians, cyclists, and hazards in a 360° surround view). - 8" rear touchscreen (climate and ventilation controls, media system, games) - 16-speaker sound system with subwoofer - voice control - Bluetooth interface - AM/FM tuner - 5 ultra-wideband endpoints (including 1 additional rear endpoint) - 4G connectivity
- Rear headrests (3)
- Front headrests (2)
- Paint: Tesla multi-layer paint, Pearl White
- LED premium headlights, adaptive, with LED daytime running lights (front light bar - headlight animation)
- Navigation: Navigation system (navigation via standard connectivity included for 8 years, after which usage is severely restricted or subject to a fee)
- Wheels: 19-inch Gemini rims
- rear light strip
- Keyless access
- Seat belts (in all seats - height-adjustable in the front)
- Seats: 2nd row of seats with electrically folding seatbacks (passive ventilation - outer seats heated - fold-out armrest)
- 12V socket
- 12V socket in the trunk
- Blind spot monitoring
- USB-A socket for dash cam or Sentry mode (guardian mode)
- Immobiliser
- Alarm system: Sentry mode
- Ambient lighting (instrument panel, front doors and rear doors - direct ambient lighting, RGB multi-color)
- Electrically folding exterior mirrors (heated side mirrors with automatic dimming)
- Exterior mirror caps in black
- third brake light
- Electronic stability and traction control
- Front trunk for luggage
- Transmission: Single-speed transmission with fixed gear
- Electric tailgate, sensor-controlled
- Heated rear window
- HEPA air purification filters for the interior
- Inductive charging station for 2 smartphones
- Interior in black (AWD) (with synthetic seat upholstery in black (leather look) - front doors in Charcoal Grey Suede, Cosmos, Premium Grille - rear doors in Charcoal Grey Suede, Cosmos)
- Interior floor mats
- Camera system (360° camera - rear camera and side repeater cameras - IR selfie camera - cabin radar)
- Automatic climate control (Dog mode - maintains an optimal interior temperature to keep your pet safe in your absence - Camp mode - ensures a comfortable interior when car camping.)
- LED fog lights
- Heated steering wheel
- Active hood (pedestrian protection in case of impact)
- Over-the-air software updates (Over time, your Model Y will get even better through frequent wireless software updates to bring you new safety, comfort and entertainment features, and even more performance, range and convenience.)
- Power steering (Electronic parameter power steering with rack and pinion steering gear and variable ratio)
- Seats: Electrically adjustable front seats with seat heating and active ventilation (driver's seat 12-way adjustable (length, tilt, height, lumbar support) - passenger seat 8-way adjustable (length, tilt, height))
- USB-A data port in the instrument panel
- USB-C ports (3) (each with up to 65W charging power)
- Fully digital instrument cluster 8"

Brief expert findings

Documents submitted	At the time of the inspection, the vehicle registration certificate Part 2 (title) was available, but the vehicle registration certificate Part 1 (document) was not. (Copy)
VIN comparison	The vehicle identification number (VIN) was read from the vehicle and its conformity with the submitted documents was confirmed by the undersigned during the inspection.
Inspection	The inspection conditions were sufficient for the assessment of the vehicle. Lifting equipment and/or a pit were available for examining the vehicle.
Test drive	No test drive/shunting maneuver was carried out during the inspection of the vehicle.
Engine function test	An engine test run was performed.

Value reducing factors

No.	Component group	Description
1	Misc.	Inspection / maintenance - No evidence - No deduction
2	Misc.	Inspection / maintenance - No evidence - No deduction
3	2nd wheel set	1 alloy rim - Scratch(es) - Loss in value
4	2nd wheel set	1 tyre - Scratched - Replace
5	2nd wheel set	1 alloy rim - Scratched - Replace
6	2nd wheel set	1 alloy rim - Scratched - Replace
7	Vehicle glazing	Windscreen - Broken / torn - Replace

Wear and tear

No.	Component group	Description
1	Bonnet	Bonnet - Stone chips - No deduction
2	Wheel / tyres	Alloy rim - front right side - Scratch(es) - No deduction
3	Wheel / tyres	Alloy rim - rear right side - Scratch(es) - No deduction
4	Boot lid / rear door	Boot lid - Scratch(es) - No deduction
5	Front bumper	Spoiler - Scratch(es) - No deduction
6	Wing mirror - right side	Mirror housing - Scratch(es) - No deduction

The vehicle shows signs of wear and tear commensurate with its age and use.

Missing parts

Description

Documents - Service book (Digitaler Ausdruck)

Previous damages

No. Previous damage

1 Front, Side right, Provided by user / customer, from 24 Jul 2024

Order/Scope of Order

An order was placed to prepare a sales report for the described vehicle. This report includes the following:

- Description of key vehicle information
- Documentation of equipment features
(Delivery by third-party service providers)
- Documentation of damage, defects, missing parts
- Documentation of prior damage, unrepaired prior damage, repainting
- A brief visual or functional inspection of the equipment details, if possible.
(Functional testing of driver assistance systems is not included in the scope of services!)
- a photographic documentation of the vehicle

Basis for the order

This product is based on the guidelines for vehicle returns and valuations published by Alphabet Fleet GmbH. The expert makes the specific findings in each individual case objectively, within the framework of the prescribed standards, based on their own expertise.

The vehicle inspection takes place in a fully assembled, unassembled state.

Damage or defects that can only be detected during disassembly/diagnostic work or through further investigation remain within the realm of prognostic risk. An increased risk exists due to concealed defects caused by fraudulent misrepresentation and which were not identifiable by the expert.

Damage or defects resulting from normal use or wear and tear of the vehicle will be accepted in accordance with the applicable standard.

There was no explicit identification or monetary consideration of the expected features within the product.

Features which, in their nature and extent, slightly exceed normal use but do not constitute unacceptable damage, will be documented and indicated as signs of wear, if applicable.

Damage or defects that, according to the applicable standard, can no longer be attributed to normal use or wear and tear are listed under "Value Reducing Factors" in the product description.

Depending on the product specification, a monetary ID can be provided. If this takes place, the costs can be 100% d or pro rata depending on the vehicle's age and mileage.

Previous damages

According to available information previous damages were repaired at the vehicle. Traces of repairs, which allow conclusions about the area of repair, were not recognizable during the inspection.

Comments

-Der montierte Winterradsatz ist kein Bestandteil des Auslieferungsumfangs.



Figure 1: Diagonal front (left)



Figure 2: Diagonal front (right)



Figure 3: Diagonal rear (left)



Figure 4: Diagonal rear (right)



Figure 5: Interior - front



Figure 6: Interior - rear

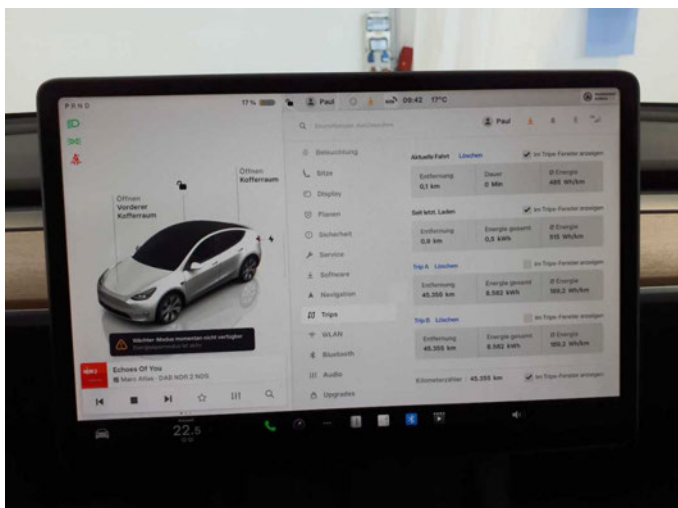


Figure 7: Instrument cluster



Figure 8: Instrument panel



Figure 9: Interior 360° view



Figure 10: Cargo area



Figure 11: VIN



Figure 12: Mounted tyres

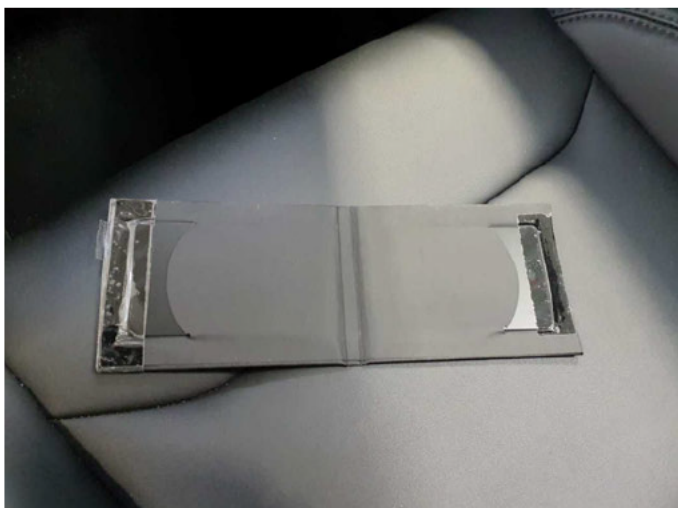


Figure 13: Documents

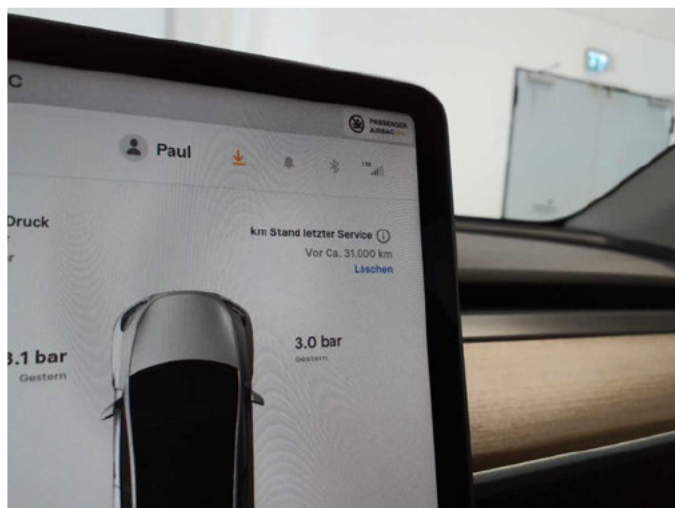


Figure 14: Documents

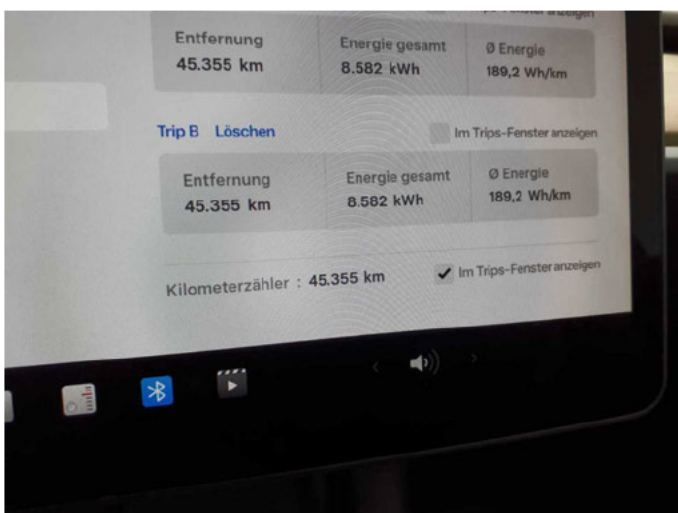


Figure 15: Documents



Figure 16: Additional tyres

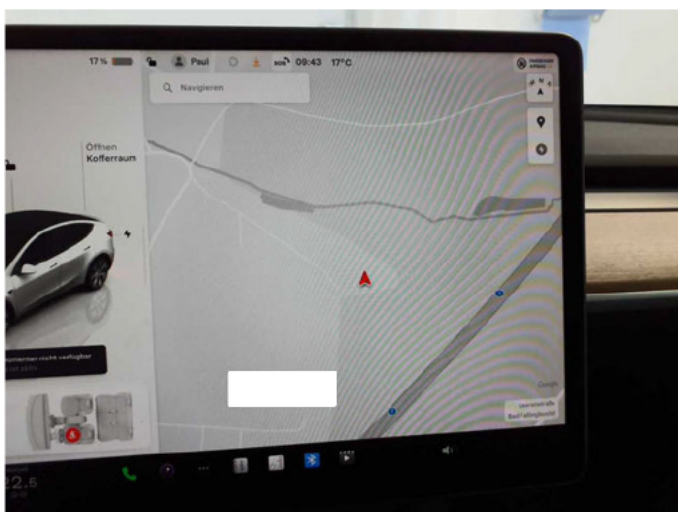


Figure 17: Navigation



Figure 18: Misc.



Figure 19: Misc.



Figure 20: Misc.



Figure 21: Misc.



Figure 22: Misc.



Figure 23: Misc.



Figure 24: Misc.



Damage 3: 2nd wheel set: 1 alloy rim - Scratch(es) - Loss in value



Damage 3: 2nd wheel set: 1 alloy rim - Scratch(es) - Loss in value



Damage 4: 2nd wheel set: 1 tyre - Scratched - Replace



Damage 4: 2nd wheel set: 1 tyre - Scratched - Replace



Damage 5: 2nd wheel set: 1 alloy rim - Scratched - Replace



Damage 5: 2nd wheel set: 1 alloy rim - Scratched - Replace



Damage 5: 2nd wheel set: 1 alloy rim - Scratched - Replace



Damage 6: 2nd wheel set: 1 alloy rim - Scratched - Replace



Damage 6: 2nd wheel set: 1 alloy rim - Scratched - Replace



Damage 6: 2nd wheel set: 1 alloy rim - Scratched - Replace



Damage 7: Vehicle glazing: Windscreen - Broken / torn - Replace



Damage 7: Vehicle glazing: Windscreen - Broken / torn - Replace