

Expertise

Protocol number: 45857929
Order No. / Reference: 26410847
Inspection date: 8 Jun 2026

Manufacturer: Volkswagen

Model: up!

VIN: WVVZZZAAZND014731



Vehicle details

Manufacturer / Type / Model / Equipment

Volkswagen up!

Vehicle Identification number WVVZZZAAZND014731

Mileage (Read) 58,705 km

First registration 4 Feb 2022

Number of holders 1

Power / Engine displacement 48 kw / 999 ccm

Fuel type / Cylinder Petrol / 3

Gearbox / Number of gears Manual / 5

Type of drive Front drive

Type of vehicle Saloon car

Colour / colour code Pure White

Doors / Seats 5 / 4

Upholstery type Cloth

Colour of upholstery Black



Vehicle details			
Maintenance booklet / proof	digital proof / complete	Next maintenance in	10,500 km
Last service on / at	10/2025 at 54,127 km		
Key is / should be	2 / 2	FZG documents	ZB#2 (B) was available (copy), ZB#1 (S) was not available.
		Letter No.	GF412732
Previous damage / Accident	Detectable	Repainting	Detectable
Inspection conditions	sufficient	Lifting equipment / pit	No
Test drive	Not performed	Engine function test	Performed
Manufacturer key number/ type code number	0603 / CMX 00021		
Emission standard	EURO6;WLTP;AP;PI/CI; M, N1 I	fine dust sticker	
Permitted total weight	1,330 kg	Empty weight	

Tyres

Mounted tyres				
#	Tyre size	Type of tyre	Manufacturer	Tread depth
1)	165/70 R14 81T	Winter tyres on Steel rim with wheel cover	Dunlop	5mm / 5mm
2)	165/70 R14 81T	Winter tyres on Steel rim with wheel cover	Dunlop	5mm / 5mm
Additional tyres				
#	Tyre size	Type of tyre	Manufacturer	Tread depth
1)	175/65 R14 82T	Summer tyres on Steel rim with wheel cover	unterschiedliche Hersteller	6mm / 5mm
2)	175/65 R14 82T	Summer tyres on Steel rim with wheel cover	Continental	4mm / 4mm
Replacement				
Typ	Tyre size	Type of tyre	Manufacturer	Tread depth
	Tirefit	Expiration date 06/2029		

Legend: Tread depth information for the left tire is listed first, for the right tire it is listed second on the axle in the direction of travel.



Equipment

Standard equipment

- Airbag for driver and front passenger
- Version with 4 doors including front passenger seat backrest that folds down completely
- Turn signals integrated into the side exterior mirrors
- third brake light
- Dash pad "black cube"
- Chrome trim around the left and right air vents
- Electric front windows
- Luggage compartment lighting
- Transmission: 5-speed manual transmission
- Handbrake lever handle in plastic
- Heated rear window
- Air conditioning
- Front headrests
- LED daytime running lights
- Makeup mirror in the passenger-side sun visor
- Upholstery: Cloth
- Radio accessories: 2 speakers
- Tire pressure monitoring system (passive)
- Wheels: Tire Mobility Set
- electromechanical power steering
- Seats: Easy-Entry entry aid
- Start-stop system
- Telephone interface
- USB interface
- Warning tone and light for unfastened seat belts front and rear
- Green thermal insulation glazing

- Airbag, head airbag system including front side airbags
- Exterior mirrors adjustable from inside
- Exterior mirror housings and door handles in body color
- Vehicle tool kit
- Headliner in light grey
- Tachometer
- Electronic Stability Program
- luggage compartment cover
- Luggage compartment floor adjustable to 2 heights and removable
- Glove compartment with flap
- rear window wiper
- Rear headrests (2)
- Paint finish: Solid
- Steering column with height adjustment
- Multifunction display "Plus"
- Radio "Composition Phone"
- Radio accessories: Digital radio reception DAB+
- Wheels: 4 steel wheels 5 J x 14
- Rear bench seat, undivided, 2-seater, backrest asymmetrically split and foldable
- Seats: Driver's seat with height adjustment
- 12V socket
- Phone accessories: maps + more dock
- First aid kit, warning triangle and high-visibility vest
- We Connect Go
- Electronic immobilizer
- Central locking

Extra equipment

- Paint finish: Special paint finish, solid color
- Wheels: Winter wheels (additional) steel, 5 J x 14 (4 steel wheels 5 J x 14 - on-board tools and jack - winter tires 165/70 R 14 T)
- Package: Driver assistance package (Parking aid - Acoustic warning signals for obstacles in the rear area - Cruise control - Rear view camera)

Brief expert findings

Documents submitted	At the time of the inspection, the vehicle registration certificate Part 2 (title) was available, but the vehicle registration certificate Part 1 (document) was not. (Copy)
VIN comparison	The vehicle identification number (VIN) was read from the vehicle and its conformity with the submitted documents was confirmed by the undersigned during the inspection.
Inspection	The inspection conditions were sufficient for the assessment of the vehicle. No lifting equipment or pit was available for inspecting the vehicle. Therefore, inspection of the vehicle's underside was only possible to a limited extent.
Test drive	No test drive/shunting maneuver was carried out during the inspection of the vehicle.
Engine function test	An engine test run was performed.



Value reducing factors

No.	Component group	Description
1	2nd wheel set	1 wheel cover - Scratch(es) - Replace
2	Seat - front	Seat cover - right side - Soiled - Clean
3	Door - front left side	Door edge - Scratch(es) - Smart repair
4	Body	Body - Glued / labelled - De-glue / neutralise
5	Front bumper	Front bumper - Scratch(es) - Paint
6	Rear bumper	Rear bumper - Dent / paintcoat damage - Repair and paint

Previous damages

No.	Previous damage	Extent of damage (Net)
1	Side - left, Provided by user / customer, from 19 Feb 2026	2.077,55 €

Repainting

No.	Repainting
1	Side panel - rear left side, Professionally carried out, Invoice of repair done Non-existent

Paint coat thickness measurement

Side panel - rear left side	180 µm	Door - rear left side	280 µm
-----------------------------	--------	-----------------------	--------

Order/Scope of Order

An order was placed to prepare a sales report for the described vehicle. This report includes the following:

- Description of key vehicle information
- Documentation of equipment features
(Delivery by third-party service providers)
- Documentation of damage, defects, missing parts
- Documentation of prior damage, unrepaired prior damage, repainting
- A brief visual or functional inspection of the equipment details, if possible.
(Functional testing of driver assistance systems is not included in the scope of services!)
- a photographic documentation of the vehicle



Basis for the order

This product is based on the guidelines for vehicle returns and valuations published by Alphabet Fleet GmbH. The expert makes the specific findings in each individual case objectively, within the framework of the prescribed standards, based on their own expertise.

The vehicle inspection takes place in a fully assembled, unassembled state.

Damage or defects that can only be detected during disassembly/diagnostic work or through further investigation remain within the realm of prognostic risk. An increased risk exists due to concealed defects caused by fraudulent misrepresentation and which were not identifiable by the expert.

Damage or defects resulting from normal use or wear and tear of the vehicle will be accepted in accordance with the applicable standard.

There was no explicit identification or monetary consideration of the expected features within the product.

Features which, in their nature and extent, slightly exceed normal use but do not constitute unacceptable damage, will be documented and indicated as signs of wear, if applicable.

Damage or defects that, according to the applicable standard, can no longer be attributed to normal use or wear and tear are listed under "Value Reducing Factors" in the product description.

Depending on the product specification, a monetary ID can be provided. If this takes place, the costs can be 100% d or pro rata depending on the vehicle's age and mileage.

Previous damages

According to available information previous damages were repaired at the vehicle. Traces of repairs, which allow conclusions about the area of repair, were not recognizable during the inspection.



Figure 1: Diagonal front (left)



Figure 2: Diagonal front (right)



Figure 3: Diagonal rear (left)



Figure 4: Diagonal rear (right)



Figure 5: Interior - front



Figure 6: Interior - rear



Figure 7: Instrument cluster



Figure 8: Instrument panel



Figure 9: Interior 360° view



Figure 10: Cargo area



Figure 11: VIN



Figure 12: Mounted tyres



Figure 13: Documents



Figure 14: Documents

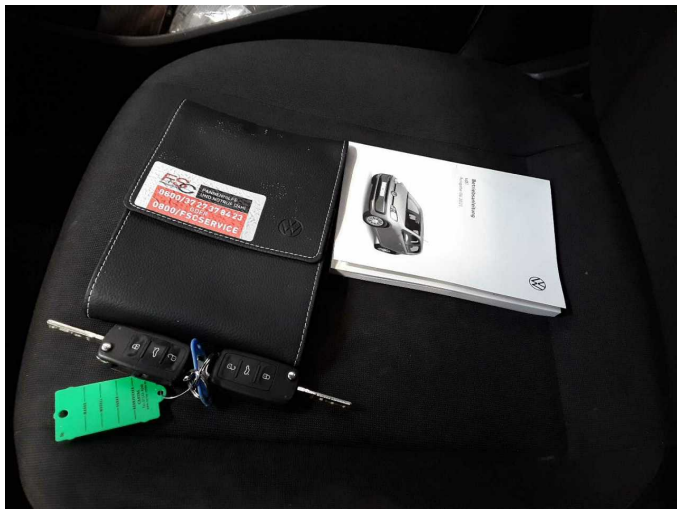


Figure 15: Documents



Figure 16: Additional tyres



Figure 17: Misc.



Figure 18: Misc.



Figure 19: Misc.



Figure 20: Misc.



Figure 21: Misc.



Figure 22: Misc.



Figure 23: Misc.



Damage 1: 2nd wheel set: 1 wheel cover - Scratch(es) - Replace



Damage 1: 2nd wheel set: 1 wheel cover - Scratch(es) - Replace



Damage 2: Seat - front: Seat cover - right side - Soiled - Clean



Damage 3: Door - front left side: Door edge - Scratch(es) - Smart repair



Damage 3: Door - front left side: Door edge - Scratch(es) - Smart repair



Damage 4: Body: Body - Glued / labelled - De-glude / neutralise



Damage 4: Body: Body - Glued / labelled - De-glude / neutralise



Damage 5: Front bumper: Front bumper - Scratch(es) - Paint



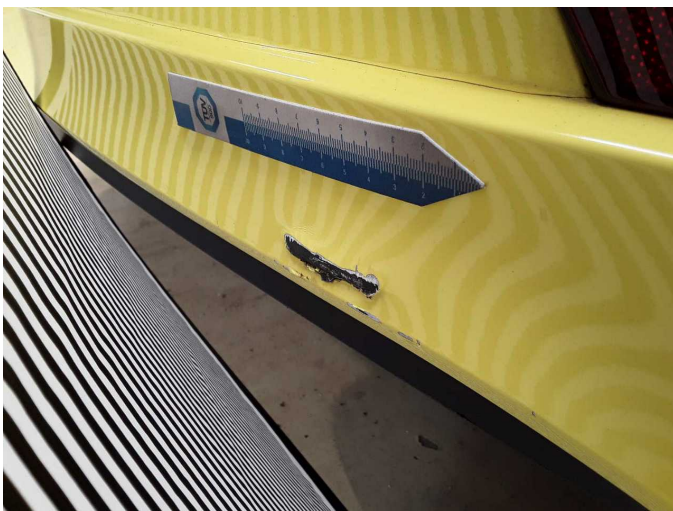
Damage 5: Front bumper: Front bumper - Scratch(es) - Paint



Damage 6: Rear bumper: Rear bumper - Dent / paintcoat damage - Repair and paint



Damage 6: Rear bumper: Rear bumper - Dent / paintcoat damage - Repair and paint



Damage 6: Rear bumper: Rear bumper - Dent / paintcoat damage - Repair and paint



Repainting 1: Side panel - rear left side



Repainting 1: Side panel - rear left side



Repainting 1: Side panel - rear left side



Repainting 1: Side panel - rear left side



Wartungshistorie

(gemäß Auftraggeber Informationen)

Fahrgestellnummer: WVVZZZAAZND014731

Hersteller / Modell: VOLKSWAGEN VOLKSWAGEN up!

Datum	KM-Stand	Beschreibung
22.10.2025	54.127	Bremse Sonstiges; Bremsklötze vorne; Bremsscheiben + Klötze v; Bremsscheiben vorne; Luftfiltereinsatz ern; Motoröl b. Wartung; Ölfilter ern; Regelwartungsdienst; Wartung Sonstiges; Zündkerzen ern
24.02.2025	43.055	HU + AU
30.05.2024	30.797	Reparatur Sonstiges; Systemtest/Eigendiagnose
14.03.2024	27.338	Bremse Sonstiges; Bremsflüssigkeit; Bremsflüssigkeit ern; Bremsklötze vorne; Motoröl b. Wartung; Ölfilter ern; Regelwartungsdienst; Wartung Sonstiges
16.03.2023	12.607	Motoröl b. Wartung; Ölfilter ern; Regelwartungsdienst; Wartung Sonstiges