

## Expertise

Protocol number: 46280423  
Order No. / Reference: 26554200  
Inspection date: 1 Jul 2026

Manufacturer: Ford

Model: Focus Turnier 1.5 EcoBlue Start-Stopp-System  
COOL&CONNECT

VIN: WF0PXXGCHPLS81489



### Vehicle details

#### Manufacturer / Type / Model / Equipment

Ford Focus Turnier 1.5 EcoBlue Start-Stopp-System  
COOL&CONNECT

<b>Vehicle Identification number</b>	WF0PXXGCHPLS81489
<b>Mileage (Read)</b>	132,758 km
<b>First registration</b>	5 May 2021
<b>Number of holders</b>	1

<b>Power / Engine displacement</b>	88 kw / 1,499 ccm
<b>Fuel type / Cylinder</b>	Diesel / 4
<b>Gearbox / Number of gears</b>	Manual / 6
<b>Type of drive</b>	Front drive
<b>Type of vehicle</b>	Station wagon

<b>Colour / colour code</b>	Frost-Weiß
<b>Doors / Seats</b>	5 / 5
<b>Upholstery type</b>	Cloth
<b>Colour of upholstery</b>	Anthracite-Black



Vehicle details			
<b>Maintenance booklet / proof</b>	digital proof / complete	<b>Next maintenance in</b>	65 %
<b>Last service on / at</b>	02/2026 at 122,391 km		
<b>Key is / should be</b>	2 / 2	<b>FZG documents</b>	ZB#2 (B) was available (copy), ZB#1 (S) was not available.
		<b>Letter No.</b>	FY060250
<b>Previous damage / Accident</b>	Detectable	<b>Repainting</b>	None detectable
<b>Inspection conditions</b>	sufficient	<b>Lifting equipment / pit</b>	yes
<b>Test drive</b>	Not performed	<b>Engine function test</b>	Performed
<b>Manufacturer key number/ type code number</b>	8566 / BPV 00369		
<b>Emission standard</b>	EURO6;WLTP;AP;PI/CI; M, N1 I	<b>fine dust sticker</b>	
<b>Permitted total weight</b>	1,955 kg	<b>Empty weight</b>	

## Tyres

Mounted tyres				
#	Tyre size	Type of tyre	Manufacturer	Tread depth
1)	205/60 R16 92H	Summer tyres on Light alloy	Continental	3mm / 3mm
2)	205/60 R16 92H	Summer tyres on Light alloy	Continental	4mm / 4mm
Additional tyres				
#	Tyre size	Type of tyre	Manufacturer	Tread depth
1)	205/60 R16 96H	Winter tyres on Light alloy	Continental	5mm / 5mm
2)	205/60 R16 96H	Winter tyres on Light alloy	Continental	5mm / 5mm
Replacement				
Typ	Tyre size	Type of tyre	Manufacturer	Tread depth
	Tirefit	Expiration date 12/2024		

**Legend: Tread depth information for the left tire is listed first, for the right tire it is listed second on the axle in the direction of travel.**



## Equipment

### Standard equipment

- Airbag: Passenger airbag deactivation
- Exterior mirrors in body color, driver and passenger side, electrically adjustable and heated
- Tires: 6.5 J x 16 alloy wheels (4) with 205/60 R 16 tires
- Fabric headliner
- Roof spoiler painted in car color
- Tachometer
- Driver information system
- Lane keeping assist including lane keeping assist
- Electric parking brake with auto-hold function
- Ford ECO-Coach
- Luggage compartment lighting
- Luggage compartment floor, adjustable in two ways
- Cruise control
- Illuminated glove compartment
- rear window wiper
- Instrument lighting, adjustable
- Isofix bracket
- LED daytime running lights
- Steering wheel: 3-spoke design
- Make-up mirrors in driver and passenger sun visors
- MyKey key system (individually programmable second key)
- Fog light
- Emergency brake light
- Pollen filter and dust filter
- Post-Collision Assist
- Tire repair kit
- Rear view camera
- Electromechanical power steering
- Seats: Driver's seat height adjustable
- Seats: Rear seat backrest
- Seats: Front sports seats with enhanced lateral support
- 12-volt power outlet in the luggage compartment
- Child safety lock on the rear doors, manual
- Lashing eyes in the luggage compartment
- Electronic immobilizer
- Heat-insulating glazing, tinted
- Additional heating
- Anti-lock braking system (ABS) with electronic brake force distribution (EBD)
- Mounting points behind the second row of seats
- Chrome decor
- Roof rails, aluminum
- Diesel particulate filter (DPF)
- Electronic Safety and Stability Program (ESP)
- Driving mode switch, selective
- Electric windows front and rear
- Ford Easy Fuel
- FordPass Connect including eCall, live traffic information (only with navigation) and Wi-Fi hotspot
- Speed limiter
- Transmission: 6-speed manual transmission
- Back window, heater
- Interior lighting with LED technology
- Intelligent security system
- Headrests: 2 front and 3 rear, height adjustable
- Leather gear knob
- Adjustable steering column
- Center console "Premium" front
- Navigation: Ford Navigation, Ford SYNC 3 with AppLink, 8" touchscreen (20.3 cm) with DAB/DAB+
- Front and rear parking pilot system
- Upholstery: Cloth
- Pre-Collision Assist
- Tire Pressure Monitoring System (TMPS)
- Headlight assistant with day/night sensor
- Seats: Passenger seat, 2-way adjustable
- Seats: Map grid on the driver's and front passenger's seat backrests
- Start-stop system
- Carpet floor mats in the front
- Black trim around the side windows
- Warning system for unfastened seat belts for the 1st and 2nd rows of seats
- Central/Double Locking



### Extra equipment

- Paint finish: Frost White
- Package: Comfort (2-zone automatic climate control for driver and front passenger side, separately adjustable - Ford Key Free system (keyless locking/unlocking) including Ford Power Start function (keyless starting) - Windscreen wipers with rain sensor, variable sensitivity adjustment - Interior mirror, automatically dimming - Headlights with delayed shut-off)
- Package: Winter (heated windscreen - heated steering wheel - individually and variably heated front seats)
- Side windows from the 2nd row of seats and rear window, dark tinted.
- Safety partition net for luggage compartment
- Package: Easy Parking Package (Active Parking Assist with parking and exiting function - Blind Spot Assist and Cross Traffic Alert with emergency braking function (when reversing out of a parking space) - Door edge protection - Rearview camera additionally with split view technology)
- Package: Technology (Cool&Connect) (Intelligent Adaptive Cruise Control (iACC) with traffic sign recognition - Wrong-way driver warning - Evasive Steering Assist (ESA) - High Beam Assist (in conjunction with intelligent LED headlights with glare-free high beam assist) - Driver alert system - Rain-sensing wipers with variable sensitivity - Auto-dimming rearview mirror - Headlights with delayed shut-off - Distance indicator and distance warning)

### Brief expert findings

Documents submitted	At the time of the inspection, the vehicle registration certificate Part 2 (title) was available, but the vehicle registration certificate Part 1 (document) was not. (Copy)
VIN comparison	The vehicle identification number (VIN) was read from the vehicle and its conformity with the submitted documents was confirmed by the undersigned during the inspection.
Inspection	The inspection conditions were sufficient for the assessment of the vehicle. Lifting equipment and/or a pit were available for examining the vehicle.
Test drive	No test drive/shunting maneuver was carried out during the inspection of the vehicle.
Engine function test	An engine test run was performed.

### Value reducing factors

No.	Component group	Description
1	Misc.	Main inspection - No evidence - No deduction
2	Equipment	Tirefit filler - Expired - Replace
3	Rear bumper	Rear bumper - Scratch(es) - Paint
4	Door - front right side	Door - Dent / paintcoat damage - Repair and paint

### Wear and tear

No.	Component group	Description
1	Front bumper	Front bumper - Stone chips - No deduction
2	Bonnet	Bonnet - Stone chips - No deduction
3	Vehicle glazing	Windscreen - Stone chips - No deduction
4	Interior	Interior - Scratch(es) - No deduction
5	Wheel / tyres	Wheel rims - complete set - Scratch(es) - No deduction
6	Door - rear left side	Door - dent(s) - Smooth repair work

The vehicle shows signs of wear and tear commensurate with its age and use.

### Previous damages

No.	Previous damage	Extent of damage (Net)
1	Front, Provided by user / customer, from 12 Aug 2025	1.232,83 €



## Accident damages

### No. Accident

1 Side right

## Order/Scope of Order

An order was placed to prepare a sales report for the described vehicle. This report includes the following:

- Description of key vehicle information
- Documentation of equipment features  
(*Delivery by third-party service providers*)
- Documentation of damage, defects, missing parts
- Documentation of prior damage, unrepaired prior damage, repainting
- A brief visual or functional inspection of the equipment details, if possible.  
(*Functional testing of driver assistance systems is not included in the scope of services!*)
- a photographic documentation of the vehicle

## Basis for the order

This product is based on the guidelines for vehicle returns and valuations published by Alphabet Fleet GmbH. The expert makes the specific findings in each individual case objectively, within the framework of the prescribed standards, based on their own expertise.

The vehicle inspection takes place in a fully assembled, unassembled state.

Damage or defects that can only be detected during disassembly/diagnostic work or through further investigation remain within the realm of prognostic risk. An increased risk exists due to concealed defects caused by fraudulent misrepresentation and which were not identifiable by the expert.

Damage or defects resulting from normal use or wear and tear of the vehicle will be accepted in accordance with the applicable standard.

There was no explicit identification or monetary consideration of the expected features within the product.

Features which, in their nature and extent, slightly exceed normal use but do not constitute unacceptable damage, will be documented and indicated as signs of wear, if applicable.

Damage or defects that, according to the applicable standard, can no longer be attributed to normal use or wear and tear are listed under "Value Reducing Factors" in the product description.

Depending on the product specification, a monetary ID can be provided. If this takes place, the costs can be 100% d or pro rata depending on the vehicle's age and mileage.

## Previous damages

Non-repaired previous damages were found at the vehicle. The necessary repair costs are listed in the expert report or if necessary, are listed in detail in a separately enclosed repair cost calculation.

## Comments

Wartungshistorie gemäß Auftraggeber Informationen.

Der kalkulierte Unfall wurde nach bestem Wissen und Gewissen unter eingeschränkten Besichtigungsbedingung im demontagefreien Zustand erstellt. Es können aufgrund verdeckter Beschädigung, Mehrkosten und somit Abweichung der für den Unfall ausgewiesenen Reparaturkosten nicht ausgeschlossen werden.



Figure 1: Diagonal front (left)



Figure 2: Diagonal front (right)



Figure 3: Diagonal rear (left)



Figure 4: Diagonal rear (right)



Figure 5: Interior - front



Figure 6: Interior - rear



Figure 7: Instrument cluster



Figure 8: Instrument panel



Figure 9: Interior 360° view



Figure 10: Cargo area



Figure 11: VIN



Figure 12: Mounted tyres



Figure 13: Documents

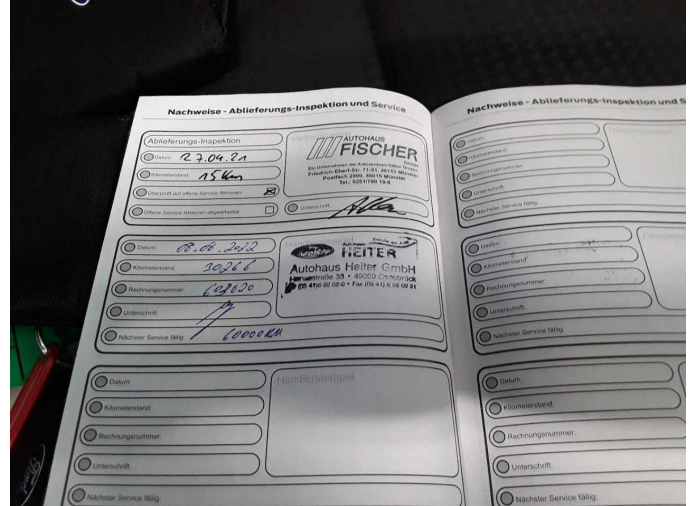


Figure 14: Documents



Figure 15: Additional tyres



Figure 16: Navigation



Figure 17: Misc.



Figure 18: Misc.



Figure 19: Misc.



Figure 20: Misc.



Figure 21: Misc.



Figure 22: Misc.



Figure 23: Misc.



Figure 24: Misc.



Figure 25: Misc.



Figure 26: Misc.



Damage 2: Equipment: Tirefit filler - Expired - Replace



Damage 3: Rear bumper: Rear bumper - Scratch(es) - Paint



Damage 3: Rear bumper: Rear bumper - Scratch(es) - Paint



Damage 4: Door - front right side: Door - Dent / paintcoat damage - Repair and paint



**Damage 4:** Door - front right side: Door - Dent / paintcoat damage - Repair and paint



**Wear and tear 1:** Front bumper: Front bumper - Stone chips - No deduction



**Wear and tear 1:** Front bumper: Front bumper - Stone chips - No deduction



**Wear and tear 2:** Bonnet: Bonnet - Stone chips - No deduction



**Wear and tear 2:** Bonnet: Bonnet - Stone chips - No deduction



**Wear and tear 3:** Vehicle glazing: Windscreen - Stone chips - No deduction



**Wear and tear 3:** Vehicle glazing: Windscreen - Stone chips - No deduction



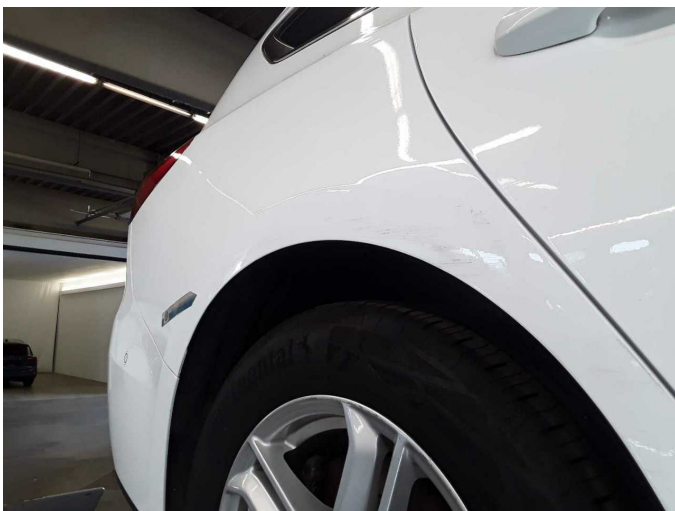
**Wear and tear 6:** Door - rear left side: Door - dent(s) - Smooth repair work



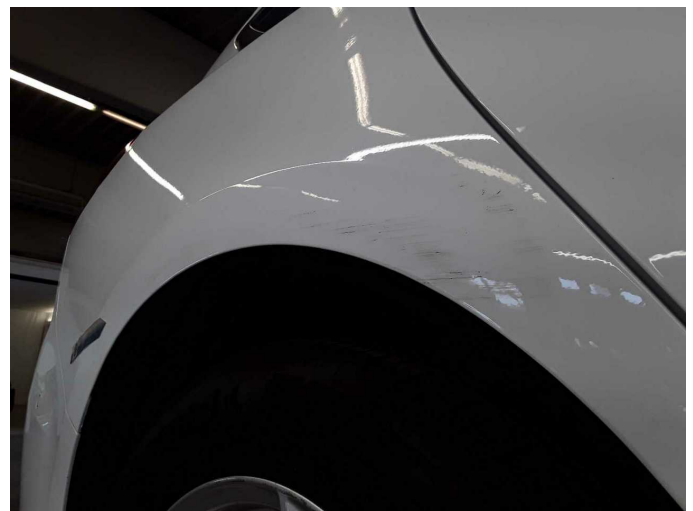
**Wear and tear 6:** Door - rear left side: Door - dent(s) - Smooth repair work



**Accident 1:** Side right



**Accident 1:** Side right



**Accident 1:** Side right



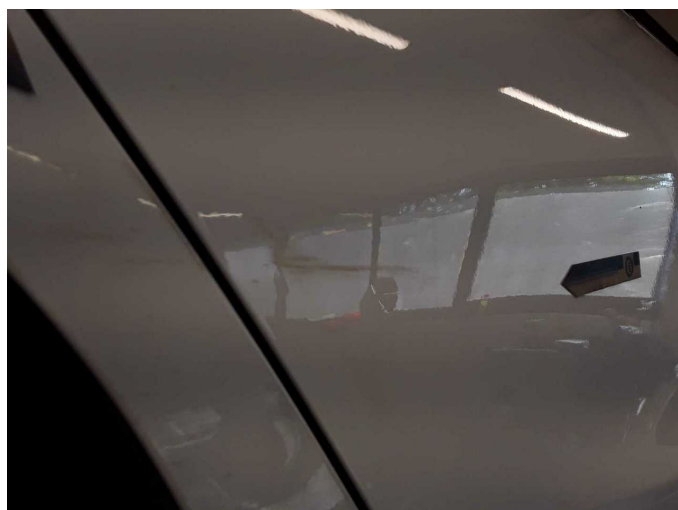
Accident 1: Side right



Accident 1: Side right



Accident 1: Side right



Accident 1: Side right



# Wartungshistorie

(gemäß Auftraggeber Informationen)

Fahrgestellnummer: WF0PXXGCHPLS81489  
Hersteller / Modell: FORD FORD Focus Turnier 1.5 EcoBlue Start-Stopp-System  
COOL&CONNECT

Datum	KM-Stand	Beschreibung
05.05.2026	128.376	AU
10.02.2026	122.391	Bremse Sonstiges; Bremsklötze hinten; Bremsscheiben + Klötze h; Bremsscheiben hinten; Kraftstofffilter ern; Ladeluftschlauch ern; Luftfiltereinsatz ern; Motoröl b. Wartung; Ölfilter ern; Regelwartungsdienst; Reparatur Sonstiges; Wartung Sonstiges; Wasserpumpe ern
16.04.2025	93.261	Motoröl b. Wartung; Ölfilter ern; Regelwartungsdienst; Reparatur Sonstiges; Wartung Sonstiges
23.05.2024	64.805	Batterie ern; Bremse Sonstiges; Bremsklötze hinten; Bremsklötze vorne; Bremsscheiben + Klötze v; Bremsscheiben vorne; HU + AU; Systemtest/ Eigendiagnose
31.01.2024	59.203	Bremsflüssigkeit; Bremsflüssigkeit ern; Kraftstofffilter ern; Luftfiltereinsatz ern; Motoröl b. Wartung; Ölfilter ern; Regelwartungsdienst; Wartung Sonstiges
11.08.2022	30.269	Motoröl b. Wartung; Ölfilter ern; Regelwartungsdienst; Wartung Sonstiges