

Expertise

Protocol number: 46306146
Order No. / Reference: 26571142
Inspection date: 24 Jun 2026

Manufacturer: Mercedes-Benz

Model: V 220 d lang 9G-TRONIC Edition

VIN: W1V44781313874371



Vehicle details

Manufacturer / Type / Model / Equipment

Mercedes-Benz V 220 d lang 9G-TRONIC Edition

Vehicle Identification number W1V44781313874371

Mileage (Read) 178,357 km

First registration 4 Jun 2021

Number of holders 1

Power / Engine displacement 120 kw / 1,950 ccm

Fuel type / Cylinder Diesel / 4

Gearbox / Number of gears Automatic / 9

Type of drive Rear drive

Type of vehicle Van

Colour / colour code Grafitgrau Dunkel

Doors / Seats 4 / 7

Upholstery type Leather

Colour of upholstery Black



Vehicle details

Maintenance booklet / proof	digital proof / complete	Next maintenance in	578 Tag(e)
Last service on / at	01/2026 at 168,842 km		
Key is / should be	1 / 2	FZG documents	ZB#2 (B) was available (copy), ZB#1 (S) was not available.
		Letter No.	GD150143
Previous damage / Accident	Detectable	Repainting	None detectable
Inspection conditions	sufficient	Lifting equipment / pit	No
Test drive	Not performed	Engine function test	Performed
Manufacturer key number/ type code number	2222 / AAY 00910		
Emission standard	EURO6;WLTP;AP;PI/CI; M, N1 I	fine dust sticker	
Permitted total weight	3,100 kg	Empty weight	

Tyres

Mounted tyres				
#	Tyre size	Type of tyre	Manufacturer	Tread depth
1)	225/55 R17 101V	Summer tyres on Light alloy	Goodyear	4mm / 4mm
2)	225/55 R17 101V	Summer tyres on Light alloy	Hankook	6mm / 6mm

Legend: Tread depth information for the left tire is listed first, for the right tire it is listed second on the axle in the direction of travel.

TÜV SÜD Auto Partner GmbH
Wiesenring 2
04159 Leipzig

Inspection location
Hartmann Fleet Professionals GmbH
Leerenstraße 25
29683 Bad Fallingbommel



Equipment



Standard equipment

- Exhaust gas purification SCR Generation 3
- ADAPTIVE BRAKE with dry braking in wet conditions and hill start assist
- Driver airbag
- Airbag: Windowbag for driver and front passenger
- Outer armrests for individual seats, 2nd rear row
- Increased gross vehicle weight to 3,100 kg
- Electric vent windows in the rear passenger compartment (left and right in the passenger compartment)
- Exit lights in the side doors
- Outdoor temperature display
- Battery: fleece battery 12 V / 92 Ah
- Front footwell lighting
- BlueEFFICIENCY package (including fuel efficiency generator and ECO start/stop function)
- Tinted rear windows, black glass
- Direct steering (with speed-dependent power steering and variable steering ratio)
- Electrical components for trailer socket
- Driving light assistant
- Chassis: Sport chassis with lowered suspension and selective damping system
- Electric window regulator comfort front/front.
- Transmission: 9-speed automatic, 9G-TRONIC (including DIRECT SELECT selector lever, steering wheel shift paddles and DYNAMIC SELECT)
- Tailgate with window including rear window heating (and wiper/washer system)
- Mechanical child safety lock in the sliding doors
- TEMPMATIC air conditioning (semi-automatic controlled with pollen filter)
- Instrument cluster with color display
- Comfort roof control unit
- Convenient opening and closing with IR radio remote control
- Paint finish: Metallic (according to sample card)
- Steering wheel: Multifunction steering wheel with trip computer
- trunk light
- Mercedes-Benz emergency call system
- Package: Aerodynamics
- Package: Mirror package (including automatically dimming interior and exterior mirrors on the driver's side, automatically folding exterior mirrors on the left and right, and ambient lighting)
- Package: Lane Keeping Assist Package (including Lane Keeping Assist, Blind Spot Assist)
- Breakdown management
- Radio accessories: Digital radio (DAB) (for the DAB, DMB and DAB+ standards)
- Tire pressure monitoring
- Wheels: Comfort tires
- Disc brakes on front and rear axles
- Screw-in towing eye front/rear
- Adaptive brake light flashing
- Passenger airbag
- Airbag: Thorax-pelvis sidebags for driver and front passenger
- Armrests for seating in the passenger compartment
- Attention Assist (can detect typical signs of fatigue via steering behavior and warn the driver of impending microsleep)
- Exterior mirrors left and right heated, electrically adjustable from inside (painted in car color, with aspherical curved mirror glass and integrated turn signal light)
- Hill start assist
- Brake Assist (BAS) with brake force support during detected emergency braking
- Diesel particulate filter
- Electronic tachometer
- Third brake light
- Electronic Stability Program (ESP) (including Anti-lock Braking System (ABS) and Traction Control System (ASR))
- Front left window, fixed in side wall/sliding door
- Front right window, fixed in side wall/sliding door
- electric parking brake
- Seatbelt warning device for driver's seat
- Grab handle in the rear
- Lockable and illuminated glove compartment
- Interior headliner in grey fabric
- ISOFIX child seat attachment points in the rear and Top Tether attachment points on the back of the rear seat backrest
- TEMPMATIC automatic climate control in the rear (additional heat exchanger/evaporator with blower in the passenger compartment)
- Communication module Mercedes me connect services
- Front headrests
- leather steering wheel
- Steering column mechanically adjustable in height and length
- Headlight range control
- Center console with roller blind
- Package: Parking package with reversing camera (including PARKTRONIC with HOLD function)
- Package: Exterior Sport Package (17-inch light-alloy wheels in 20-spoke design, painted vanadium silver, with 225/55 R 17 tires on 7 J x 17 ET 51 - 17-inch brake system on the front axle - brake calipers with Mercedes-Benz lettering - sport suspension)
- Upholstery: Santos fabric
- Radio: MBUX Multimedia System Entry (17.8 cm (7") touch display - Bluetooth hands-free system - Media interface - WiFi hotspot function - Personalization for up to 8 people - Predictive function - Flash drive - USB-C port - Radio)
- Windscreen wipers with rain sensor
- Sliding door, right
- electric power steering
- Seat: Single seat, 1st rear row, left



- Halogen headlights
- Crosswind Assist
- 3-point safety belts (including mechanical belt height adjustment, belt force limiter and belt tensioner for driver and front passenger)
- Seat: Single seat, 2nd rear row, right
- Seat: Comfort driver's seat (with height and backrest adjustment, seat cushion tilt adjustment, removable inner armrest)
- Passenger seat heating
- Sun visors with cosmetic mirror and card holder, illuminated and swiveling to the side
- 12V socket
- 12V power outlets for the rear seat rows, right and left
- Cruise control and variable speed limiter SPEEDTRONIC
- Carpet in the rear
- Touchpad
- Underbody paneling, aerodynamic
- Pre-installation for Remote Services Plus (remote vehicle status query - Eco display - personalization - remote door locking and unlocking - geographic vehicle monitoring - vehicle location - vehicle tracking - parking service monitoring)
- Heat-insulating glass all around
- Decorative elements piano lacquer look, black, glossy
- Electric auxiliary heater in front system (PTC element)

Extra equipment

- Active Distance Assist DISTRONIC (accelerates independently and brakes with a maximum of half braking power - can be activated by operating the cruise control lever from a speed of 20 km/h - operates in a speed range of 0 to 200 km/h - incl. Active Brake Assist and HOLD function)
- Fuel tank with larger volume 70 l
- Navigation accessories: Pre-installation for navigation
- Package: Interior Design Package (Comfort seats in Lugano leather - Double stripe trim elements - Leather steering wheel - Brushed aluminum sport pedals)
- Radio: MBUX multimedia system Mid
- Wheels: 43.2 cm (17") alloy wheels, 4-spoke design
- Sliding door: electric operation for right-hand sliding door (multi-button radio remote control)
- Seat: Single seat, 1st rear row, right, in conjunction with reclining package
- Seats: 3-seater comfort bench seat, 2nd row (with folding outer seat)
- Folding table
- Central locking with interior switch

- Seat: Single seat, 1st rear row, right
- Seat: Single seat, 2nd rear row, left
- Seat: Comfort passenger seat (with height and backrest adjustment, seat surface tilt adjustment, removable inner armrest)
- Seats: Seat rail system with quick-release fasteners
- Heated driver's seat
- Storage net on the passenger seat backrest
- Storage net for driver's seat backrest
- 12V socket in the trunk/cargo area
- Bumpers and attachments painted in body color
- Carpet for the front vehicle interior (including luggage net in the passenger footwell)
- Ambient lighting tailgate
- First aid kit in the passenger door
- Warm air duct to the passenger compartment
- Warning triangle
- Maintenance interval indicator "ASSYST"
- Electronic immobilizer (including locking system with 3-channel radio remote control in the electronic key in chrome look, optical locking feedback and emergency opening (approved by AZT and TÜV))

- Towbar, detachable ball head
- Lighting in the rear grab handle
- Anodized roof rails
- EASY-PACK electric tailgate
- Chassis: AGILITY CONTROL chassis with selective damping system
- Cargo area partition with 2 shopping baskets
- Navigation: Navigation Plus (including live traffic information)
- Package: Table package (folding table - 2 cupholders attachable to rear armrests - 12V sockets for rear seat rows right and left - storage net driver's seat backrest - storage net passenger seat backrest - storage nets on backrests of individual rear seats)
- Separately opening rear window
- Seat: Lumbar support, passenger seat
- Seat: Lumbar support driver's seat
- Storage nets on the backrests of the individual seats in the rear in conjunction with a 3-seater bench.
- Elimination of rear lettering
- Decorative elements with double stripe look in conjunction with AMG Line



Brief expert findings

Documents submitted	At the time of the inspection, the vehicle registration certificate Part 2 (title) was available, but the vehicle registration certificate Part 1 (document) was not. (Copy)
VIN comparison	The vehicle identification number (VIN) was read from the vehicle and its conformity with the submitted documents was confirmed by the undersigned during the inspection.
Inspection	The inspection conditions were sufficient for the assessment of the vehicle. No lifting equipment or pit was available for inspecting the vehicle. Therefore, inspection of the vehicle's underside was only possible to a limited extent.
Test drive	No test drive/shunting maneuver was carried out during the inspection of the vehicle.
Engine function test	An engine test run was performed.

Value reducing factors

No.	Component group	Description
1	Door - front left side	Door edge - Scratch(es) - Smart repair
2	Indicator - front	Mirror - right side - Scratch(es) - Replace
3	Body	B-pillar - left side - Scratch(es) - Smart repair
4	Bonnet	Bonnet - Dent / paintcoat damage - Repair and paint
5	Boot lid / rear door	Boot lid - Dent / paintcoat damage - Repair and paint
6	Side panel - rear left side	Side panel - Scratch(es) - Paint
7	Rear bumper	Rear bumper - Dent / paintcoat damage - Paint

Wear and tear

No.	Component group	Description
1	Vehicle glazing	Windscreen - Stone chips - No deduction

The vehicle shows signs of wear and tear commensurate with its age and use.

Missing parts

Description

Equipment - Vehicle key

Previous damages

No.	Previous damage	Extent of damage (Net)
1	Side right, Provided by user / customer, from 15 Aug 2025	3.560,95 €
2	Side right, Provided by user / customer, from 16 Mar 2026	14.946,91 €

Order/Scope of Order

An order was placed to prepare a sales report for the described vehicle. This report includes the following:

- Description of key vehicle information
- Documentation of equipment features
(*Delivery by third-party service providers*)
- Documentation of damage, defects, missing parts
- Documentation of prior damage, unrepaired prior damage, repainting
- A brief visual or functional inspection of the equipment details, if possible.
(*Functional testing of driver assistance systems is not included in the scope of services!*)
- a photographic documentation of the vehicle



Basis for the order

This product is based on the guidelines for vehicle returns and valuations published by Alphabet Fleet GmbH. The expert makes the specific findings in each individual case objectively, within the framework of the prescribed standards, based on their own expertise.

The vehicle inspection takes place in a fully assembled, unassembled state.

Damage or defects that can only be detected during disassembly/diagnostic work or through further investigation remain within the realm of prognostic risk. An increased risk exists due to concealed defects caused by fraudulent misrepresentation and which were not identifiable by the expert.

Damage or defects resulting from normal use or wear and tear of the vehicle will be accepted in accordance with the applicable standard.

There was no explicit identification or monetary consideration of the expected features within the product.

Features which, in their nature and extent, slightly exceed normal use but do not constitute unacceptable damage, will be documented and indicated as signs of wear, if applicable.

Damage or defects that, according to the applicable standard, can no longer be attributed to normal use or wear and tear are listed under "Value Reducing Factors" in the product description.

Depending on the product specification, a monetary ID can be provided. If this takes place, the costs can be 100% or pro rata depending on the vehicle's age and mileage.

Previous damages

According to available information previous damages were repaired at the vehicle. Traces of repairs, which allow conclusions about the area of repair, were not recognizable during the inspection.



Figure 1: Diagonal front (left)



Figure 2: Diagonal front (right)



Figure 3: Diagonal rear (left)



Figure 4: Diagonal rear (right)



Figure 5: Interior - front



Figure 6: Interior - rear



Figure 7: Instrument cluster



Figure 8: Instrument panel



Figure 9: Interior 360° view



Figure 10: Cargo area



Figure 11: VIN



Figure 12: Mounted tyres



Figure 13: Documents



Figure 14: Navigation



Figure 15: Misc.



Figure 16: Misc.



Figure 17: Misc.



Figure 18: Misc.



Figure 19: Misc.



Figure 20: Misc.

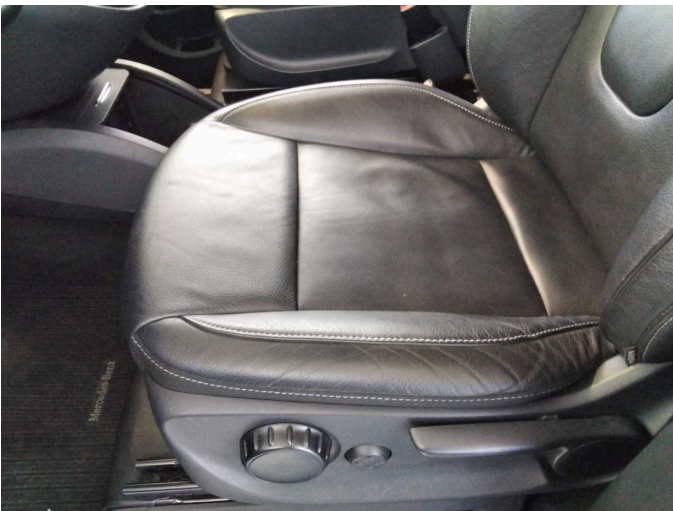


Figure 21: Misc.



Figure 22: Misc.



Figure 23: Misc.

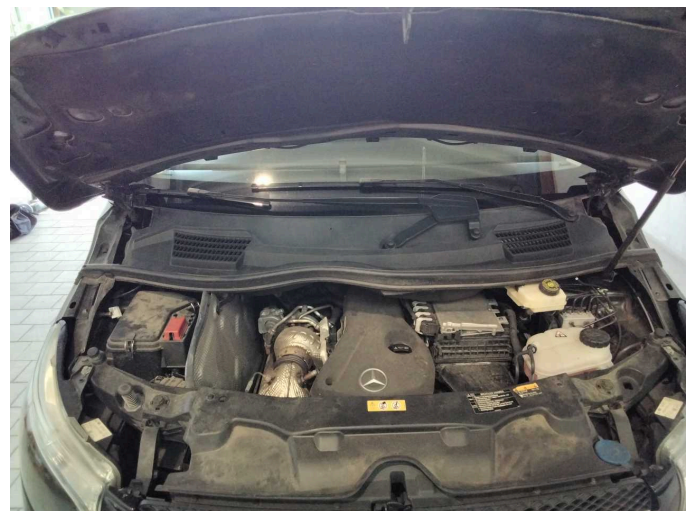


Figure 24: Misc.



Figure 25: Misc.



Figure 26: Misc.

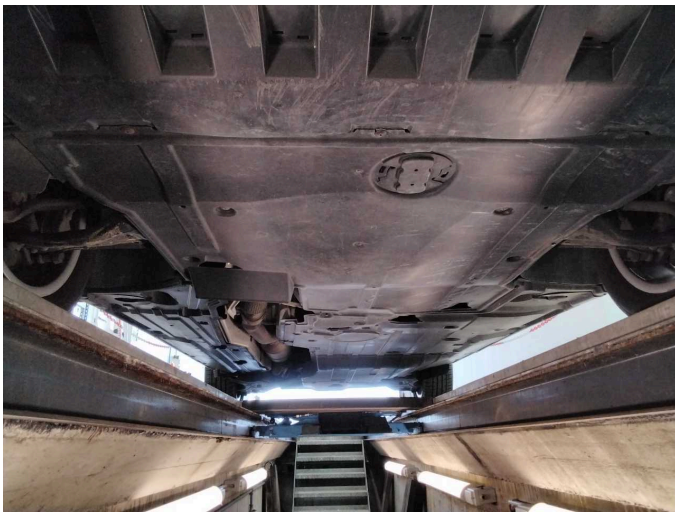
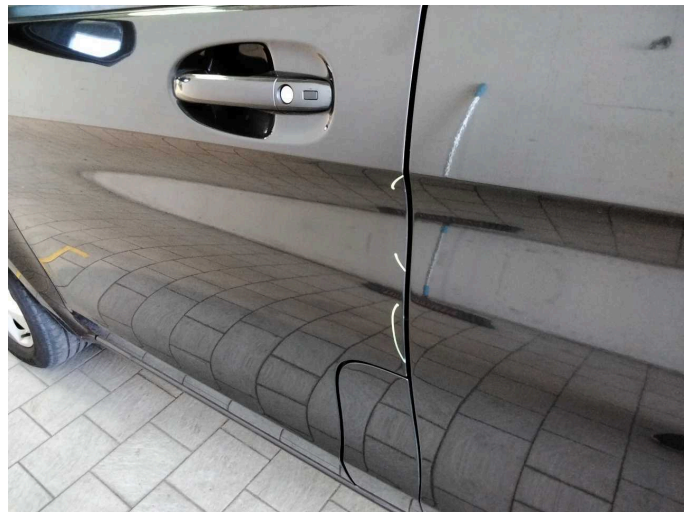


Figure 27: Misc.



Damage 1: Door - front left side: Door edge - Scratch(es) - Smart repair



Damage 1: Door - front left side: Door edge - Scratch(es) - Smart repair



Damage 1: Door - front left side: Door edge - Scratch(es) - Smart repair



Damage 2: Indicator - front: Mirror - right side - Scratch(es) - Replace



Damage 2: Indicator - front: Mirror - right side - Scratch(es) - Replace



Damage 3: Body: B-pillar - left side - Scratch(es) - Smart repair



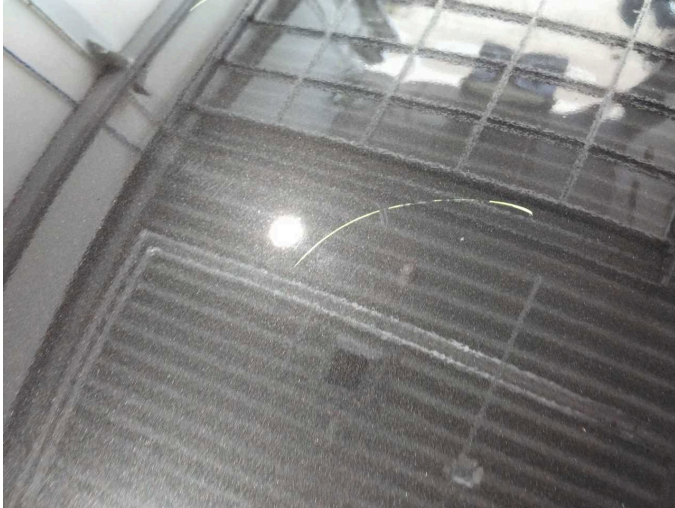
Damage 3: Body: B-pillar - left side - Scratch(es) - Smart repair



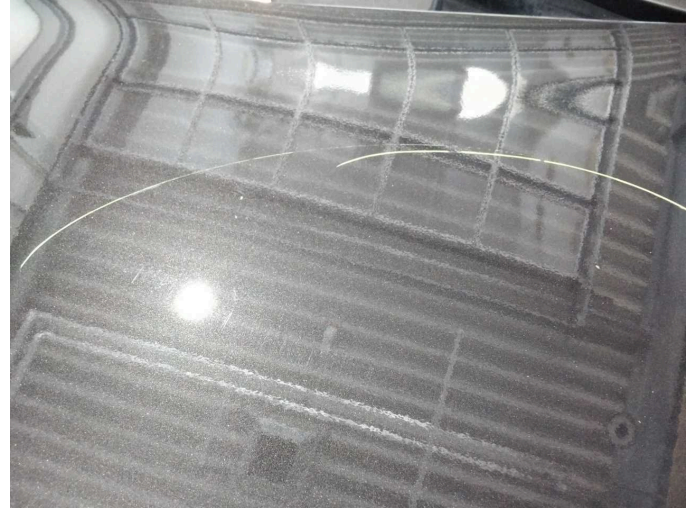
Damage 4: Bonnet: Bonnet - Dent / paintcoat damage - Repair and paint



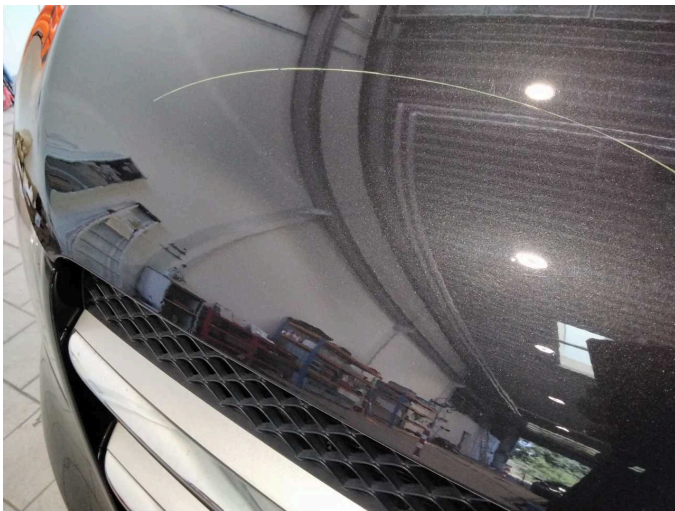
Damage 4: Bonnet: Bonnet - Dent / paintcoat damage - Repair and paint



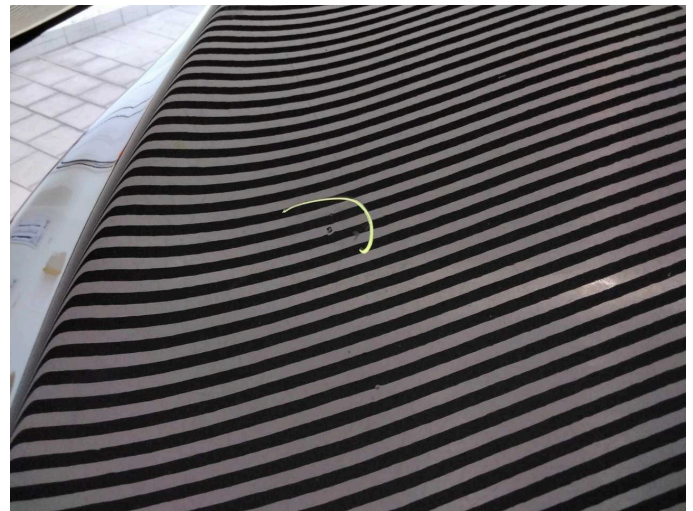
Damage 4: Bonnet: Bonnet - Dent / paintcoat damage - Repair and paint



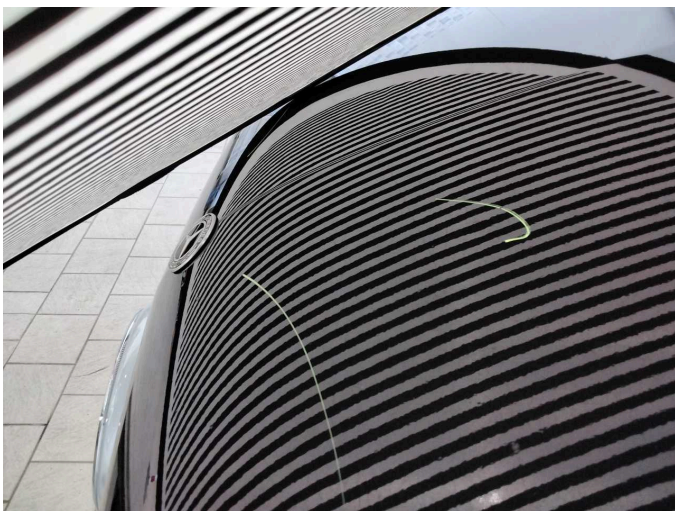
Damage 4: Bonnet: Bonnet - Dent / paintcoat damage - Repair and paint



Damage 4: Bonnet: Bonnet - Dent / paintcoat damage - Repair and paint



Damage 4: Bonnet: Bonnet - Dent / paintcoat damage - Repair and paint



Damage 4: Bonnet: Bonnet - Dent / paintcoat damage - Repair and paint



Damage 4: Bonnet: Bonnet - Dent / paintcoat damage - Repair and paint



Damage 5: Boot lid / rear door: Boot lid - Dent / paintcoat damage - Repair and paint



Damage 5: Boot lid / rear door: Boot lid - Dent / paintcoat damage - Repair and paint



Damage 5: Boot lid / rear door: Boot lid - Dent / paintcoat damage - Repair and paint



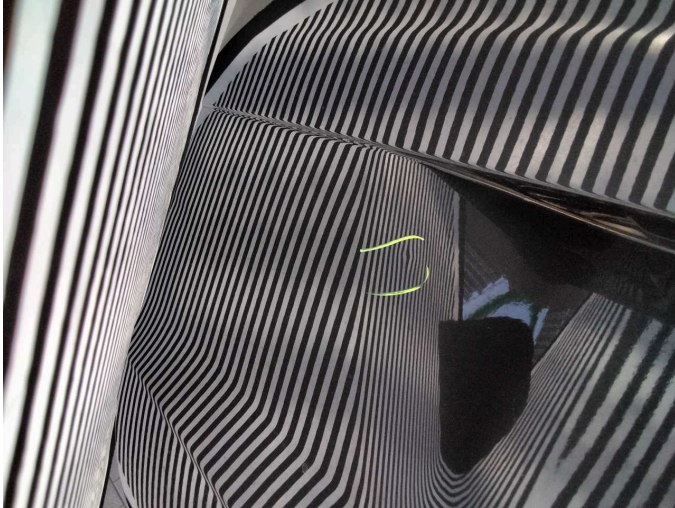
Damage 5: Boot lid / rear door: Boot lid - Dent / paintcoat damage - Repair and paint



Damage 5: Boot lid / rear door: Boot lid - Dent / paintcoat damage - Repair and paint



Damage 5: Boot lid / rear door: Boot lid - Dent / paintcoat damage - Repair and paint



Damage 5: Boot lid / rear door: Boot lid - Dent / paintcoat damage - Repair and paint



Damage 6: Side panel - rear left side: Side panel - Scratch(es) - Paint



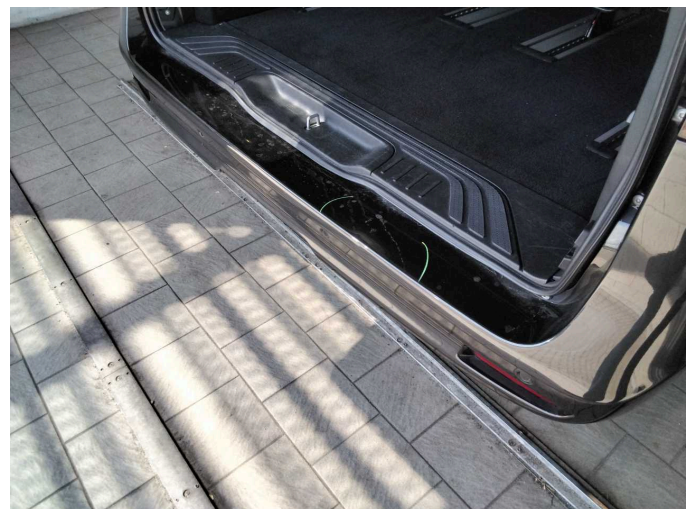
Damage 6: Side panel - rear left side: Side panel - Scratch(es) - Paint



Damage 6: Side panel - rear left side: Side panel - Scratch(es) - Paint



Damage 6: Side panel - rear left side: Side panel - Scratch(es) - Paint



Damage 7: Rear bumper: Rear bumper - Dent / paintcoat damage - Paint



Damage 7: Rear bumper: Rear bumper - Dent / paintcoat damage - Paint



Damage 7: Rear bumper: Rear bumper - Dent / paintcoat damage - Paint



Damage 7: Rear bumper: Rear bumper - Dent / paintcoat damage - Paint



Wear and tear 1: Vehicle glazing: Windscreen - Stone chips - No deduction



Missing part 1: Equipment: Vehicle key - Missing - Replace



Wartungshistorie

(gemäß Auftraggeber Informationen)

Fahrgestellnummer: W1V44781313874371
Hersteller / Modell: MERCEDES-BENZ MERCEDES-BENZ V 220 d lang 9G-TRONIC Edition

Datum	KM-Stand	Beschreibung
20.01.2026	168.842	Regelwartungsdienst; Reparatur Sonstiges
06.11.2025	162.887	Bremsscheiben+Beläge v+h
29.01.2025	128.328	Regelwartungsdienst
01.11.2024	121.709	Batterie ern; Systemtest/Eigendiagnose
14.06.2024	103.613	HU + AU
03.06.2024	103.613	Bremse Sonstiges; Bremsklötze hinten; Handbremsseil ern; Systemtest/Eigendiagnose
10.04.2024	96.928	Systemtest/Eigendiagnose
16.01.2024	87.470	Regelwartungsdienst
15.01.2024	87.470	Regelwartungsdienst
17.11.2023	83.245	Systemtest/Eigendiagnose
06.02.2023	57.790	Bremsflüssigkeit ern
30.08.2022	45.842	Regelwartungsdienst