

## Expertise

Protocol number: 45856472  
Order No. / Reference: 26413071  
Inspection date: 9 Jun 2026

Manufacturer: Volvo

Model: V60 B4 D Geartronic Momentum Pro

VIN: YV1ZWK5VDN2489381



### Vehicle details

#### Manufacturer / Type / Model / Equipment

Volvo V60 B4 D Geartronic Momentum Pro

<b>Vehicle Identification number</b>	YV1ZWK5VDN2489381
<b>Mileage (Read)</b>	117,268 km
<b>First registration</b>	28 Mar 2022
<b>Number of holders</b>	1
<b>Next periodical technical inspection</b> (Report on hand)	02/2027

**Power / Engine displacement** 145 kw / 1,969 ccm

**Fuel type / Cylinder** Hybrid Diesel / E / 4

**Gearbox / Number of gears** Automatic / 8

**Type of drive** Front drive

**Type of vehicle** Station wagon

**Colour / colour code** Black Stone

**Doors / Seats** 5 / 5

**Upholstery type** Cloth

**Colour of upholstery** Anthracite-Black

**Vehicle with smoke odor** no



## Vehicle details

<b>Maintenance booklet / proof</b>	Available / complete	<b>Next maintenance in</b>	243 Tag(e)
<b>Last service on / at</b>	02/2026 at 112,064 km		
<b>Key is / should be</b>	2 / 2	<b>FZG documents</b>	ZB#2 (B) was available (copy), ZB#1 (S) was not available.
		<b>Letter No.</b>	GF848282
<b>Previous damage / Accident</b>	Detectable	<b>Repainting</b>	Detectable
<b>Inspection conditions</b>	sufficient	<b>Lifting equipment / pit</b>	yes
<b>Test drive</b>	Not performed	<b>Engine function test</b>	Performed
<b>Manufacturer key number/ type code number</b>	9101 / BTH 00012		
<b>Emission standard</b>	EURO6;WLTP;AP;PI/CI; M, N1 I	<b>fine dust sticker</b>	
<b>Permitted total weight</b>	2,290 kg	<b>Empty weight</b>	
<b>Dimensions</b>	4761 x 1850 x 1421		

## Tyres

### Mounted tyres

#	Tyre size	Type of tyre	Manufacturer	Tread depth
1)	225/50 R17 98V	Winter tyres on Light alloy	Pirelli	4mm / 4mm
2)	225/50 R17 98V	Winter tyres on Light alloy	Pirelli	6mm / 6mm

### Additional tyres

#	Tyre size	Type of tyre	Manufacturer	Tread depth
1)	225/50 R17 98V	Summer tyres on Light alloy	Michelin	4mm / 4mm
2)	225/50 R17 98V	Summer tyres on Light alloy	Michelin	4mm / 4mm

### Replacement

Typ	Tyre size	Type of tyre	Manufacturer	Tread depth
Tirefit		Expiration date 02/2026		

**Legend: Tread depth information for the left tire is listed first, for the right tire it is listed second on the axle in the direction of travel.**

TÜV SÜD Auto Partner GmbH  
Wiesenring 2  
04159 Leipzig

Inspection location  
Mosolf SE & Co.KG  
Faberweg 25  
73230 Kirchheim unter Teck



## Equipment



## Standard equipment

- ABS - Anti-lock Braking System (with EBV)
- Driver and front passenger airbags with two-stage deployment system (side airbags for driver and front passenger and head/shoulder airbags (IC) for all occupants)
- Attachment system for carrier bags in the luggage compartment
- LED turn signals integrated into the exterior mirrors
- On-board computer with vehicle control functions
- City Safety (automatic emergency braking system with detection of vehicles, cyclists, pedestrians and large animals, including intersection braking assistant, emergency braking assistant for oncoming traffic and steering support during evasive maneuvers)
- Roof edge spoiler
- Black roof rails (integrated)
- Digital instrumentation: 12.3" full-graphic display (31.2 cm diagonal, high resolution) (with two variable round instruments and information display (e.g. for navigation map view))
- Insoles: Iron Ore
- Aluminum door sill plates with Volvo lettering at the front
- Electronic differential lock
- Chrome window surround
- Automatic emergency braking (emergency braking mechanism after the deployment of the airbags or seatbelt pretensioners to prevent secondary accidents)
- Transmission: 8-speed Geartronic (automatic transmission)
- rear window wiper
- Interior lighting (headliner, front reading lights, front ambient lighting, front footwell, storage compartment behind center console, glove compartment and luggage compartment)
- Keyless Drive (electronic access system) (with sensor-controlled tailgate, illuminated door handles and puddle lights)
- Headrests (5) front and rear, (rear ones manually foldable)
- Rear headrests foldable, electrically
- Paint finish: Solid
- Charging box under the cargo floor
- Stainless steel loading sill protector in the luggage compartment
- LED headlights "Thor's Hammer" (with high beam assist and integrated LED daytime running lights)
- Illuminated makeup mirror for driver and front passenger
- Front center armrest with integrated storage compartment and cup holders
- Emergency brake lights (brake lights flash rapidly during heavy deceleration; hazard warning lights are automatically activated at speeds below 10 km/h)
- Oncoming Lane Mitigation ((Preventive protection system when crossing the center line and approaching oncoming traffic including active steering intervention towards one's own lane)
- Upholstery: Textile comfort seats
- Front passenger airbag can be deactivated
- Electrically folding exterior mirrors
- Electrically adjustable exterior mirrors
- Heated exterior mirrors and rear window (automatic)
- Outdoor temperature display
- Hill Start Assist (HSA)
- Condensation sensor (for automatic activation of the defroster function)
- third brake light
- CleanZone air quality system (with activated carbon filter, automatic recirculation and pre-ventilation of the interior when the vehicle is unlocked)
- Colored glazing
- Connected Safety (Cloud-based warning of slippery road conditions and vehicles with hazard warning lights activated)
- Drive Mode (driving mode settings for engine, transmission, steering, brakes: Comfort, Eco, Dynamic, Individual)
- Driver Alert - Attention Warning
- Rear parking assist
- Electronic Stability Control (ESC)
- Electric windows front and rear (with auto-down and auto-up function)
- Front grille in waterfall design in black
- Luggage compartment partition net
- Cruise control system with variable speed limiter
- Front seat belt height adjustment
- Automatic tailgate (electric)
- Interior and exterior mirrors with automatic dimming function
- Intelligent driver information system (delays incoming calls or vehicle information in dangerous situations)
- ISOFIX anchors for the outer rear seats
- Child safety lock (manual, rear doors)
- Automatic climate control (with separate temperature control for driver and front passenger and additional air vents for the rear seats (integrated in the B-pillar) including pre-ventilation and reheating of the interior when the engine is switched off via Volvo On Call smartphone app or menu)
- Cargo area roller blind
- Lane Keeping Aid (LKA) - Active lane keeping assistant
- Steering wheel adjustable for height and reach
- Steering wheel: Multifunction buttons on the steering wheel
- Rear center armrest (foldable) with cup holders
- Sensus navigation system (3D navigation - destination input via natural voice control - dynamic route guidance with real-time traffic information - Local Search (surroundings search by keywords with information, ratings and photos) - Send-to-car (route planning via smartphone) - Volvo Lifetime MapCare (free map updates))
- Electric parking brake
- Parking ticket holder
- Particulate filter: Soot particle filter for diesel engines



- Radio: Sensus Connect infotainment system (9" touchscreen (22.9 cm diagonal) - 2 USB ports (compatible with Apple iPod/iPhone/iPad) - Bluetooth hands-free system incl. audio streaming - Digital vehicle owner's manual - Digital radio reception (DAB+) - Internet access incl. internet radio and apps (via paired smartphone) - Voice control
- Rain sensor
- Road Sign Information (RSI) (Traffic Sign Recognition)
- Run-off Road Protection (preventive protection system in case of unintentional leaving the road or impending rollovers including emergency call via Volvo On Call and door unlocking)
- Wheel accessories: Tire sealant (incl. 12-volt compressor - maximum speed 80 km/h)
- Safety braking system with disc brakes all around (internally ventilated) (automatic brake system pre-tensioning, brake assist and automatic hold function)
- Safety steering column (adaptive)
- Seats: Lumbar support (2-way electrically adjustable) for driver and front passenger seats
- Seats: Rear seats in a 40/60 split or fully foldable with pass-through function
- Power outlet (12-volt connection at the front)
- Fuel filler neck with misfuelling protection
- Volvo On Call with WiFi hotspot (including integrated modem, external antenna, and WiFi hotspot for mobile devices). Volvo On Call features: Automatic emergency call function with transmission of vehicle position and data, and alerting the Volvo On Call Service Center at the touch of a button (10-year subscription). Additionally, various convenience services are available via the smartphone app, such as Send-to-Car, trip log, and locking/unlocking the vehicle (3-year subscription, extendable upon request; includes extension of the emergency call function).

- Radio: Audio system High Performance Sound (170 watts of power - 10 speakers)
- Radio accessories: Apple CarPlay and Android Auto (integration of Apple iPhones and Android smartphones into the Sensus operating system.)
- Radio accessories: Digital radio reception (DAB+)
- Radio accessories: Two USB-C ports on the back of the center console
- Road Edge Detection (system to protect against unintentional leaving of the roadway through steering and braking interventions)
- Wheels: 17" alloy wheels, 5-twin-spoke design (7 J x 17 with 225/50 R 17 V tires)
- Wheels: Tire pressure monitoring system (passive) (with tire-specific pressure loss warning)
- Speed-sensitive power steering
- Seat belts (active seat belts with belt tensioner - warning tone/indicator when seat belts are not fastened (for all seats))
- Seats: Driver and front passenger seats height adjustable (electrically) (including manual tilt adjustment for the driver's seat)
- Start/Stop technology
- Power outlet (12-volt connection in the luggage compartment)
- Lashing eyes in the luggage compartment (foldable)
- Preparation for Trailer Stability Assist (TSA)
- Immobiliser
- WHIPS whiplash protection system (including immersion protection on all seats and energy-absorbing front seat cushions)
- Central locking with two remote controls and integrated emergency key (including automatic locking of the doors while driving (can be deactivated) - panic function (integrated in the remote control) - comfort opening/closing of the side windows and, if applicable, the sunroof via remote control)

**Extra equipment**

- Package: Winter Package (front seat heating - steering wheel heating)
- Side and rear windows tinted (from the B-pillar back)

**Brief expert findings**

Documents submitted	At the time of the inspection, the vehicle registration certificate Part 2 (title) was available, but the vehicle registration certificate Part 1 (document) was not. (Copy)
VIN comparison	The vehicle identification number (VIN) was read from the vehicle and its conformity with the submitted documents was confirmed by the undersigned during the inspection.
Inspection	The inspection conditions were sufficient for the assessment of the vehicle. Lifting equipment and/or a pit were available for examining the vehicle.
Test drive	No test drive/shunting maneuver was carried out during the inspection of the vehicle.
Engine function test	An engine test run was performed.



## Value reducing factors

No.	Component group	Description
1	Equipment	Tirefit filler - Expired - Replace
2	Door - front right side	Door - Scratch(es) - Smart repair
3	Door - front left side	Door - Scratch(es) - Smart repair
4	Bonnet	Bonnet - dent(s) - Smart repair
5	Side panel - rear right side	Elbow - dent(s) - Smart repair
6	Roof	Roof rail - right side - dent(s) - Smart repair
7	Boot lid / rear door	Boot lid - dent(s) - Smart repair
8	Side panel - rear left side	Elbow - Scratch(es) - Smart repair
9	Side panel - rear right side	Sill - Scratch(es) - Smart repair
10	Interior	Interior (Tiergeruch) - Odour - Ozone treatment

## Wear and tear

No.	Component group	Description
1	Wheel / tyres	Tyre - front - Does not meet the leasing specifications - No deduction
2	Vehicle glazing	Windscreen - Stone chips - No deduction
3	Rear bumper	Rear bumper (Ladekante) - Scratch(es) - No deduction

The vehicle shows signs of wear and tear commensurate with its age and use.

## Previous damages

No.	Previous damage	Extent of damage (Net)
1	Front, Provided by user / customer, from 21 Apr 2026	1.396,66 €

## Repainting

No.	Repainting
1	Bonnet, Side panel - rear right side, Professionally carried out

## Paint coat thickness measurement

Bonnet	108 µm	Side panel - rear right side	282 µm
--------	--------	------------------------------	--------

## Order/Scope of Order

An order was placed to prepare a sales report for the described vehicle. This report includes the following:

- Description of key vehicle information
- Documentation of equipment features  
(*Delivery by third-party service providers*)
- Documentation of damage, defects, missing parts
- Documentation of prior damage, unrepaired prior damage, repainting
- A brief visual or functional inspection of the equipment details, if possible.  
(*Functional testing of driver assistance systems is not included in the scope of services!*)
- a photographic documentation of the vehicle



## Basis for the order

This product is based on the guidelines for vehicle returns and valuations published by Alphabet Fleet GmbH. The expert makes the specific findings in each individual case objectively, within the framework of the prescribed standards, based on their own expertise.

The vehicle inspection takes place in a fully assembled, unassembled state.

Damage or defects that can only be detected during disassembly/diagnostic work or through further investigation remain within the realm of prognostic risk. An increased risk exists due to concealed defects caused by fraudulent misrepresentation and which were not identifiable by the expert.

Damage or defects resulting from normal use or wear and tear of the vehicle will be accepted in accordance with the applicable standard.

There was no explicit identification or monetary consideration of the expected features within the product.

Features which, in their nature and extent, slightly exceed normal use but do not constitute unacceptable damage, will be documented and indicated as signs of wear, if applicable.

Damage or defects that, according to the applicable standard, can no longer be attributed to normal use or wear and tear are listed under "Value Reducing Factors" in the product description.

Depending on the product specification, a monetary ID can be provided. If this takes place, the costs can be 100% d or pro rata depending on the vehicle's age and mileage.

## Previous damages

According to available information previous damages were repaired at the vehicle. Traces of repairs, which allow conclusions about the area of repair, were not recognizable during the inspection.



Figure 1: Diagonal front (left)



Figure 2: Diagonal front (right)



Figure 3: Diagonal rear (left)



Figure 4: Diagonal rear (right)

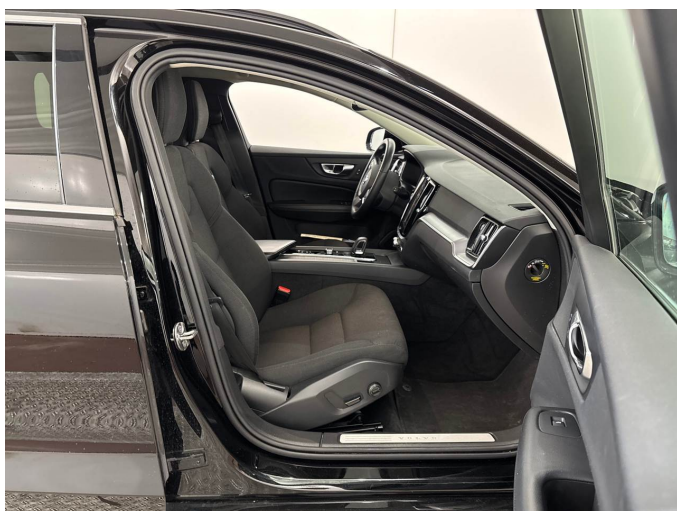


Figure 5: Interior - front



Figure 6: Interior - rear



Figure 7: Instrument cluster



Figure 8: Instrument panel



Figure 9: Interior 360° view



Figure 10: Cargo area

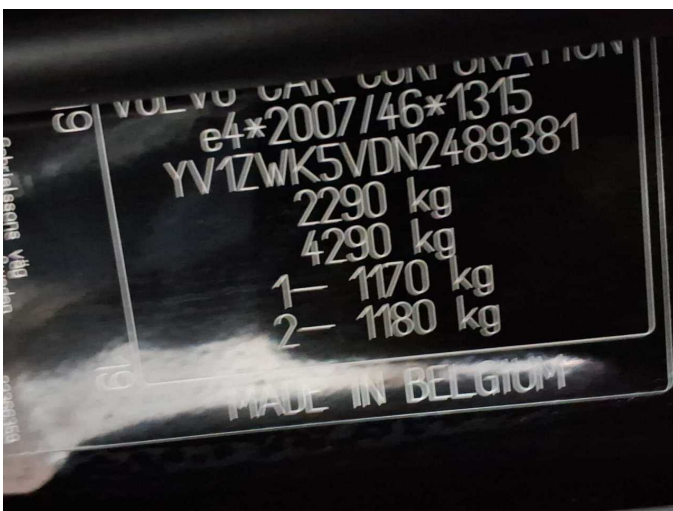


Figure 11: VIN



Figure 12: Mounted tyres



Figure 13: Documents



Figure 14: Documents

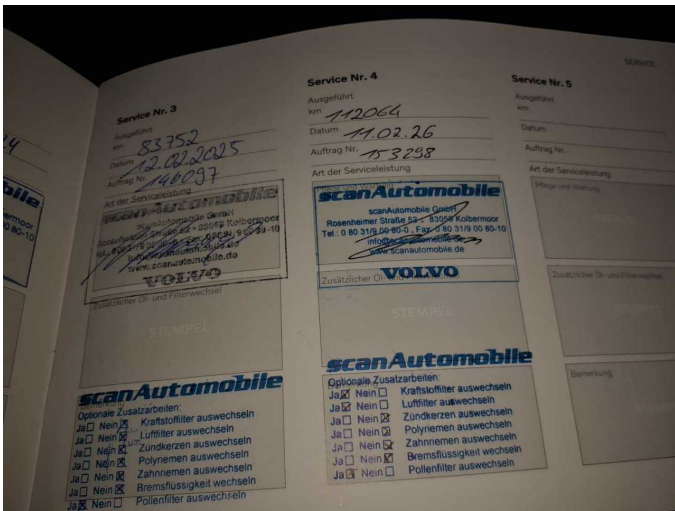


Figure 15: Documents

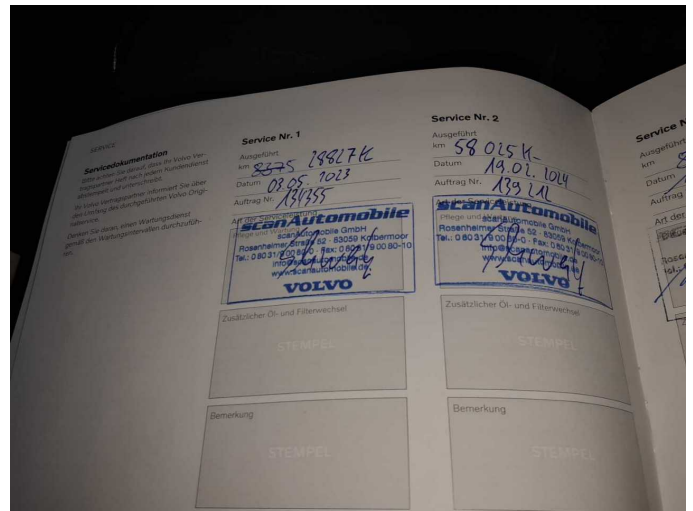


Figure 16: Documents

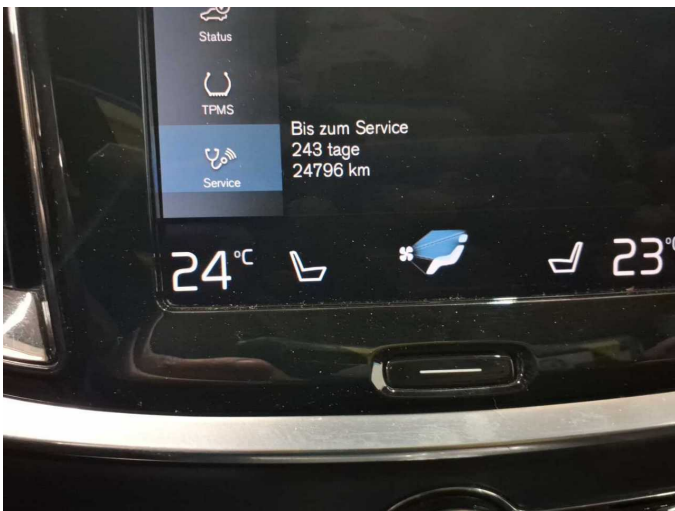


Figure 17: Documents



Figure 18: Additional tyres

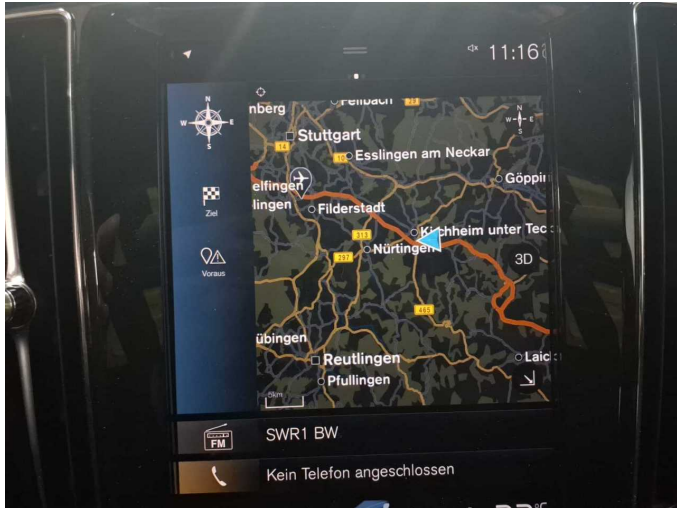


Figure 19: Navigation



Figure 20: Misc.



Figure 21: Misc.



Figure 22: Misc.



Figure 23: Misc.



Figure 24: Misc.



Figure 25: Misc.



Figure 26: Misc.

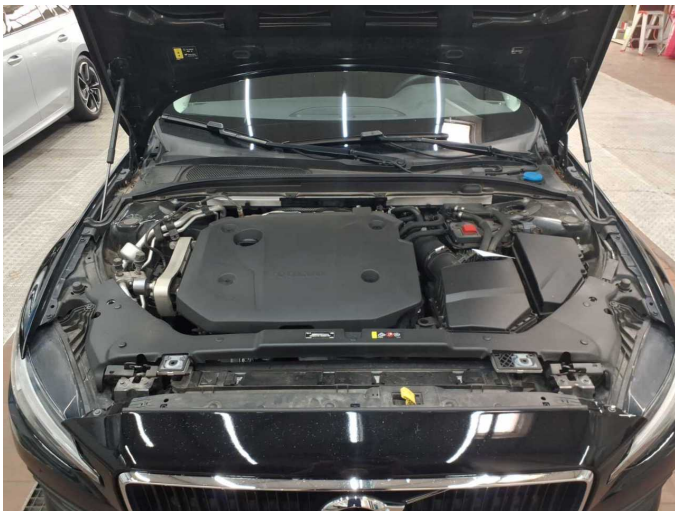


Figure 27: Misc.



Figure 28: Misc.



Figure 29: Misc.



Figure 30: Misc.



Figure 31: Misc.



Figure 32: Misc.



Figure 33: Misc.

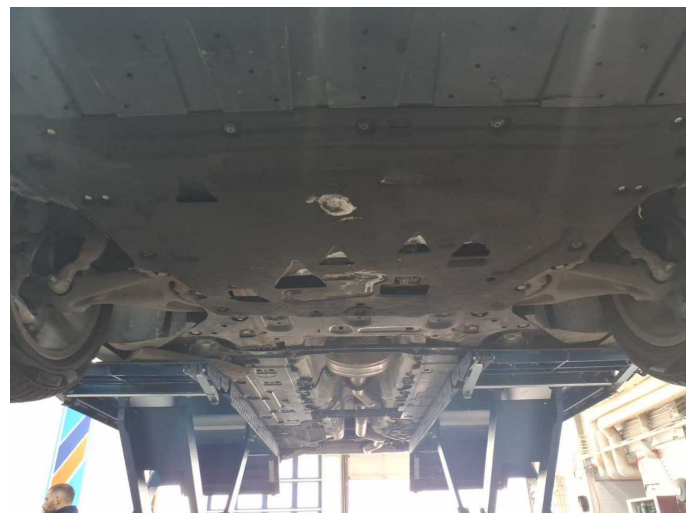
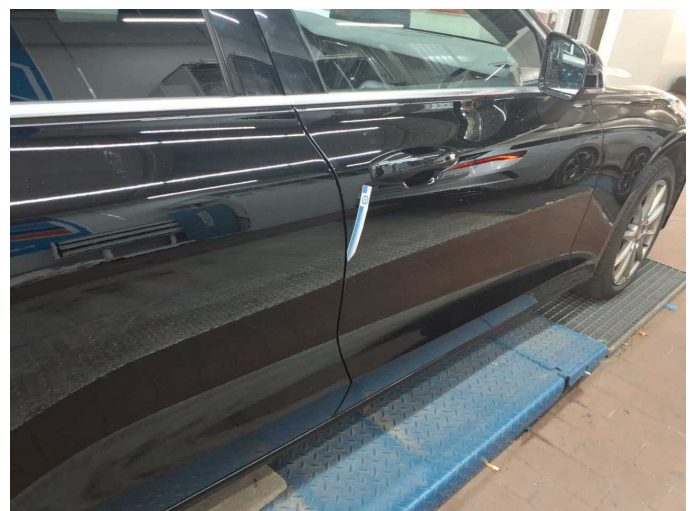


Figure 34: Misc.



Damage 1: Equipment: Tirefit filler - Expired - Replace



Damage 2: Door - front right side: Door - Scratch(es) - Smart repair



**Damage 2:** Door - front right side: Door - Scratch(es) - Smart repair



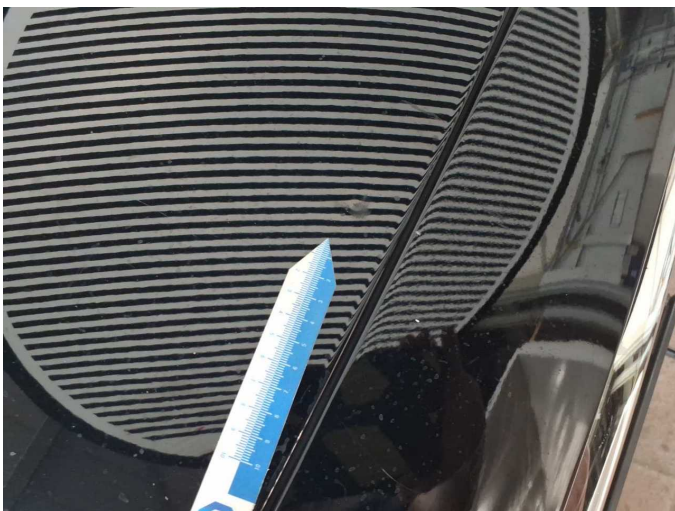
**Damage 3:** Door - front left side: Door - Scratch(es) - Smart repair



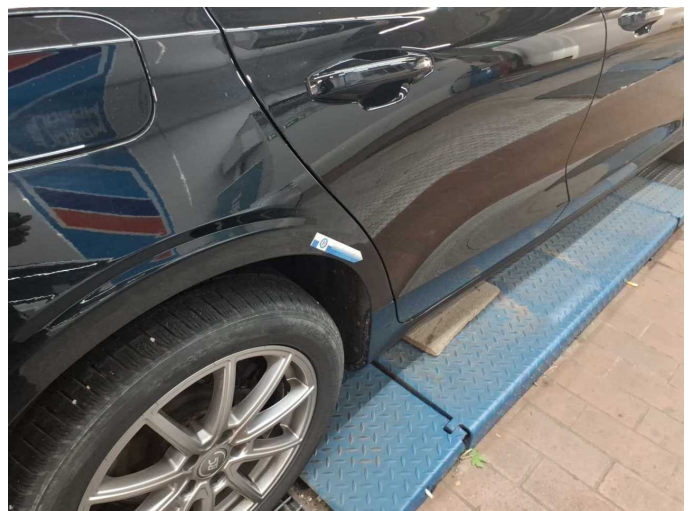
**Damage 3:** Door - front left side: Door - Scratch(es) - Smart repair



**Damage 4:** Bonnet: Bonnet - dent(s) - Smart repair



**Damage 4:** Bonnet: Bonnet - dent(s) - Smart repair



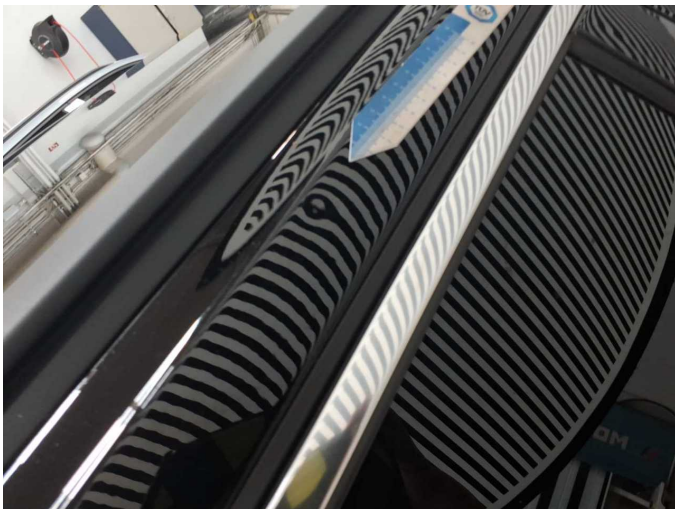
**Damage 5:** Side panel - rear right side: Elbow - dent(s) - Smart repair



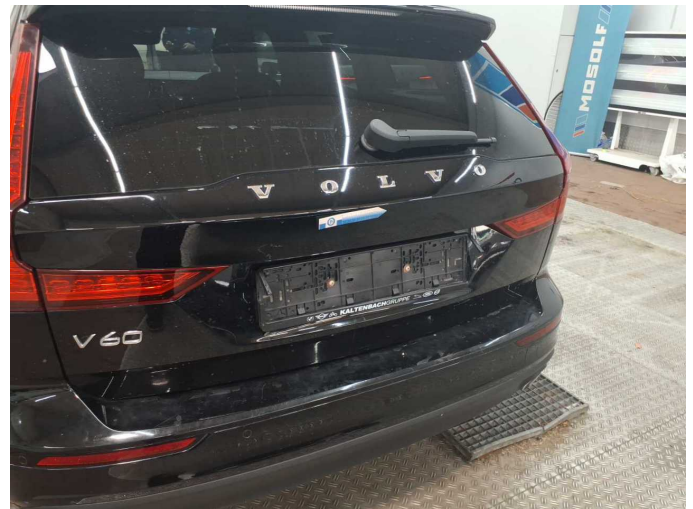
**Damage 5:** Side panel - rear right side: Elbow - dent(s) - Smart repair



**Damage 6:** Roof: Roof rail - right side - dent(s) - Smart repair



**Damage 6:** Roof: Roof rail - right side - dent(s) - Smart repair



**Damage 7:** Boot lid / rear door: Boot lid - dent(s) - Smart repair



**Damage 7:** Boot lid / rear door: Boot lid - dent(s) - Smart repair



**Damage 8:** Side panel - rear left side: Elbow - Scratch(es) - Smart repair



**Damage 8:** Side panel - rear left side: Elbow - Scratch(es) - Smart repair



**Damage 9:** Side panel - rear right side: Sill - Scratch(es) - Smart repair



**Damage 9:** Side panel - rear right side: Sill - Scratch(es) - Smart repair



**Repainting 1:** Bonnet, Side panel - rear right side



**Repainting 1:** Bonnet, Side panel - rear right side



**Repainting 1:** Bonnet, Side panel - rear right side



**Repainting 1:** Bonnet, Side panel - rear right side



# Wartungshistorie

(gemäß Auftraggeber Informationen)

Fahrgestellnummer: YV1ZWK5VDN2489381

Hersteller / Modell: VOLVO VOLVO V60 B4 D Geartronic Momentum Pro

Datum	KM-Stand	Beschreibung
12.02.2026	112.073	Kraftstofffilter ern; Luftfiltereinsatz ern; Motoröl b. Wartung; Ölfilter ern; Regelwartungsdienst; Reparatur Sonstiges; Wartung Sonstiges
26.09.2025	99.557	Wartung Sonstiges
21.08.2025	97.433	Systemtest/Eigendiagnose
17.02.2025	83.762	AU; Bremsklötze vorne; Bremsscheiben + Klötze v; Bremsscheiben vorne; Motoröl b. Wartung; Ölfilter ern; Regelwartungsdienst; Wartung Sonstiges
19.02.2024	58.025	Kraftstofffilter ern; Luftfiltereinsatz ern; Motoröl b. Wartung; Ölfilter ern; Regelwartungsdienst; Reparatur Sonstiges; Wartung Sonstiges
03.05.2023	28.827	Motoröl b. Wartung; Ölfilter ern; Regelwartungsdienst; Wartung Sonstiges