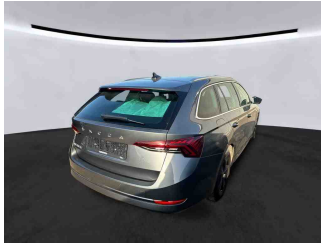


## » Overview

**Order number:** 1002467992  
**Order completed:** 26.05.2026 08:18  
**Report number:** 10674100  
**VIN:** TMBJJ8NX8PY082903



Front Left 3/4



Rear Right 3/4



Mileage

## » Vehicle Data

<b>Vehicle category:</b>	Passenger Car
<b>Vehicle type:</b>	EstateCar
<b>Make:</b>	Skoda
<b>Model:</b>	Octavia
<b>Manufacturers and type code:</b>	8004 / AWL
<b>Date of first registration:</b>	14.03.2023
<b>Mileage:</b>	69,170 km
<b>Proof of mileage:</b>	ReadOff
<b>Exterior colour:</b>	Graphite Grau Metallic
<b>Roof colour:</b>	Graphite Grau Metallic
<b>Propulsion:</b>	Front
<b>Fuel:</b>	Diesel
<b>Engine size (cc):</b>	2,000 ccm
<b>Performance:</b>	110 kW (150 PS)
<b>Length:</b>	
<b>Height:</b>	
<b>Width:</b>	
<b>Permitted total weight:</b>	
<b>Wheelbase:</b>	
<b>Number of powered axles:</b>	2
<b>Cylinders:</b>	4
<b>Euronorm:</b>	Euro 6
<b>Number of doors:</b>	4
<b>Number of seats:</b>	5
<b>Gearbox:</b>	Automatic 7-speed
<b>Upholstery type:</b>	Lining fabrics
<b>Interior colour:</b>	Schwarz
<b>Number of keys:</b>	2

## » Documents & Maintenance

<b>Statutory inspection date:</b>	
<b>Registration certificate available:</b>	No
<b>Registration certificate received:</b>	No
<b>License plate:</b>	None
<b>Maintenance book:</b>	Digital
<b>Maintenance:</b>	Not testable
<b>Maintenance last date:</b>	
<b>Maintenance last mileage:</b>	
<b>Remainder until next maintenance:</b>	141 Day(s)

<p>"DRIVER ALERT" - driver alert system</p> <p>"FRONT ASSIST" - with warning and braking reaction to vehicles, pedestrians and cyclists</p> <p>"SMART LINK" (wired and wireless connect)</p> <p>"SUNSET" + front side acoustic windows</p> <p>12-volt socket in luggage boot</p> <p>2x USB in front, 2x USB in rear (middle-console), 1x USB in rear-view mirror</p> <p>3-point seat belt for center rear seat</p> <p>3-point seat belts in front, with tensioner and height adjustment</p> <p>3-point seat belts, outer rear with ECE label</p> <p>4 doors</p> <p>4-cyl. turbo diesel 2.0l/110kW(4V) TDI CR; b.eng. T37/T3Y/TS1/T4P/T98/T4S/TR1 T0N/T13/T29/TD1/TI9/T3C/T1N/T27/T1Q/T5M</p> <p>4-cylinder diesel engine 2.0 l unit 05L.C</p> <p>7-speed automatic transmission</p> <p>8 speakers (passive)</p> <p>Adaptive cruise control (with "follow-to-stop") and speed limiter</p> <p>Additional exterior noise suppression</p> <p>Additional retro-reflectors (door area)</p> <p>Additional stone guard body covers</p> <p>Alloy wheels "PULSAR AERO", black, bright machining, 7J x 17" - 4 pcs</p> <p>Alloy wheels "PULSAR AERO", black, bright machining, 7J x 17" - 4 pcs</p> <p>Alternator 140 A</p> <p>Antenna for FM reception only, diversity</p> <p>Battery 420 A (70 Ah)</p> <p>Body-colored bumpers</p> <p>Brake control system for vehicles without electric drive (ESC and electromechanical brake booster)</p> <p>Breakaway interior rearview mirror, auto-dimming</p> <p>Breakdown kit</p> <p>Center armrest in front</p> <p>Center console</p> <p>Child seat anchors f. child seat system i-Size, 2x top tether and child seat anchors in front on front passenger side</p> <p>Chrome package</p> <p>Climatronic (3-zone) with air conditioning control panel in rear</p> <p>Columbus PLUS Business</p> <p>Comfort package 3</p> <p>Comfort seats in front (sports seats for RS)</p> <p>Comfort telephony with LTE and wireless charging</p> <p>Curb weight range 1</p> <p>DAB - Digital radio reception</p>	<p>Dashboard, black, with PAD - Style, RS, Scout; RS grey stitching</p> <p>Decorative insert "Silver Squares Haptic"</p> <p>Disc brakes in front (Geomet D)</p> <p>Disc brakes in rear</p> <p>Door and side trim panel (umbrella)</p> <p>Driver knee airbag</p> <p>Driving on the right</p> <p>Driving profile selection and conventional shock absorber</p> <p>Electric auxiliary air heater</p> <p>Electronic differential lock XDS, dynamic traction support</p> <p>Electronic engine sound</p> <p>Electronic immobilizer</p> <p>Emergency call system eCall+</p> <p>Emission standard EU6 AP</p> <p>Equipment options subset for Germany</p> <p>Ext.rear v. mirr.w.memory;el.adjusted- auto dimm.(driver), heated,w.tilt by rev .(pass.),housing.el.powerf.,board.spot</p> <p>Exterior mirror housings and various add-on parts in body color</p> <p>Exterior mirrors: convex on driver side, convex on front passenger side</p> <p>Freely programmable instrument cluster Medium</p> <p>Front fog lamps</p> <p>Front head restraints</p> <p>Front stabilizer bar</p> <p>Front-wheel drive</p> <p>Fuel system for diesel engine</p> <p>Headlight range control</p> <p>Head-up display</p> <p>Heated windscreen washer nozzles</p> <p>Heat-reflecting windshield</p> <p>Hill start assist</p> <p>Initial standard fuel filling (6L)</p> <p>Installation differentiation for transmission DQ381 -- vehicle components --</p> <p>Instrument cluster, km/h speedometer</p> <p>Interior ambient lighting and surround lighting</p> <p>Interior light in footwell in front and rear</p> <p>Keyless locking and starting system "Keyless Advanced" without SAFELOCK</p> <p>Komfort BASIS</p> <p>Lane Assist with adaptive lane guidance function + Emergency Assist</p> <p>Leather-wrapped multi-function steering wheel, heated, with tiptronic</p> <p>LED headlamps</p>
---	--

LED rear combination lamp, variable lighting functions, special styling	Side airbag in front with curtain airbag and interaction airbag in front
Left-hand drive	Side Assist
LongLife Service Regime	Special identification label for EC for M1 passenger vehicles
Luggage compartment cover, sliding	Special interior noise suppression
Luggage compartment floor covering "Comfort"	Speed-related variable steering assist (Servotronic)
Luggage compartment lighting	Standard battery/alternator capacity
Luxury equipment	Standard climatic zones
Manual child safety lock	Standard manufacturing sequence
Manual in German	Standard paint coating
Mass damper for steering wheel, XX Hz	Standard pedal cluster
Mechanical rear seat release	Standard rear axle
Nameplate set in basic style	Standard wheel bolts
Navi Columbus + Web radio	Start-stop system with regenerative braking
No special edition	Storage compartments in trunk
No special purpose vehicle, standard equipment	Sun visors with illuminated vanity mirror on driver and front passenger side
Not hot country	Suspension range 07 installation control only, no requirement forecast
Operating permit, alteration	Three rear head restraints
Operating voltage 12 V	Tire pressure monitoring system
Optional infotainment system (MIB3)	Tire suppliers for EU countries
Park distance control in front and rear	Tires 205/55 R17 91V Low Rolling Resistance
Parking brake	Tool kit
Part set without country-specific prescriptive standard	Trailer hitch preparation
Power seat adjustment for both front seats with memory feature	Transport protection film (minimum protection) with additional transport protection measures
Power windows with comfort operation and circuit breaker	Trims for alloy wheels
Power-adjustable lumbar support in front seats	Two-tone horn
Rear axle weight, type 1	Type approval country Germany
Rear exhaust tailpipe (standard)	Unsplit molded headliner
Rear floor panel module, type 4	Unsplit rear seat bench, split folding backrest, with center armrest
Rear fog light on one side, back-up light on both sides	UWB-capable country and carrier frequency, 433.92 to 434.42 MHz
Rear shock absorption, basic version 1	Vehicle class differentiation -5EN-
Rear spoiler	Vehicles without special upgrade measures
Rear window wiper "AERO"	Vent
Refrigerant R1234yf	Virtual pedal
Regional code " ECE " for radio	Visual and acoustic seat belt reminder, electric contact in front and rear
Remote Access / Remote Access + Online Infotainment	Voice control
Remote Access + Infotainment Online 3 years	Wagon/Avant
Roof rails	Weight range 11 installation control only, no requirement forecast
Seat heater for front and rear seats separately controlled	Wheelbase
Seat trim covers in fabric	Windshield wiper intermittent control with light/rain sensor
Separate daytime running light	With dynamic road sign display
Service indicator 30 000 km or 2 years ( variable )	
Shock absorption in front	

With emergency steering support with turn assist  
With multifunction camera  
Without activated carbon canister with SCR  
Without adapter  
Without additional front underbody guard  
Without additional malfunction display  
Without additional tires  
Without alternative drive system  
Without auxiliary heater/parking heater  
Without backrest release for front seats  
Without bracket  
Without camera systems/accident sensors  
Without Car2X  
Without charging cable  
Without delivery equipment  
Without electric motor (hybrid)  
Without extended safety system  
Without floor mats  
Without folding table on front seat backrest  
Without gearshift knob/handle  
Without headlamp washer system  
Without light control  
Without locking and starting systems  
Without luggage/load compartment floor  
Without mode 3 charging cable  
Without mud flap  
Without partition  
Without protective film for scuff plate  
Without rear stabilizer bar  
Without roof insert (standard roof)  
Without seat ventilation/massage seat  
Without second battery  
Without ski bag  
Without special body measures  
Without speed limiter  
Without storage compartment package/box  
Without supertone system and tone sequence control  
Without tie down straps/net/pocket

## » Tyres

### MOUNTED TYRES

Make	Location	Position	Type	Rim	Dimensions	Profile depth
Semperit	Front	Left	Winter	Aluminium	205/60 R 16 92 H	5.0 mm
Semperit	Front	Right	Winter	Aluminium	205/60 R 16 92 H	5.0 mm
Semperit	Rear	Left	Winter	Aluminium	205/60 R 16 92 H	5.0 mm
Semperit	Rear	Right	Winter	Aluminium	205/60 R 16 92 H	5.0 mm

**Permitted:** Yes

**Roadworthy:** Yes

### UNMOUNTED TYRES

Make	Location	Position	Type	Rim	Dimensions	Profile depth
Continental			Summer	Aluminium	205/55 R 17 91 V	5.0 mm
Continental			Summer	Aluminium	205/55 R 17 91 V	5.0 mm
Continental			Summer	Aluminium	205/55 R 17 91 V	5.0 mm
Continental			Summer	Aluminium	205/55 R 17 91 V	5.0 mm

**Permitted:** Yes

**Roadworthy:** Yes

### SPARE/EMERGENCY TYRE & ACCESSORIES

**Toolkit present:** Yes

**Repair kit present:** Yes

**Repair kit expiration date:** 11.2026

**Compressor present:** Yes

## » Devaluation Factors

Nr	Location	Damage type	Repair type
1	MOT certificate	Expired	Replace
2	Door seal FL	Damaged	Replace
3	Door seal FR	Damaged	Replace
4	Boot lid covering R	Scratch(es)	Replace
5	Side wall RL	Dent(s)	Paintless dent repair
6	Roof	Scratch(es)	Polish

## » Usage Damages

Nr	Location	Damage type	Repair type
1	Windscreen	Stone chip(s)	Acceptable

## » Commercial devaluation

<b>Accidental vehicle:</b>	Yes
<b>Known previous damages:</b>	No
<b>Previous damages detectable:</b>	No
<b>Repainting present:</b>	No
<b>Paint thickness measurement performed:</b>	Yes - with abnormalities/deviations

### PAINTHICKNESS MEASUREMENT RESULTS

Part	Paint (µm)
Paint thickness Trunk (µm)	186.0
At least 3 measurements were carried out per component.	

## » Notes On The Assessment

**Details of the assignment and the scope of the assessment:**

The order was placed to prepare a condition report on the described vehicle.

The vehicle condition assessment was carried out in accordance with the order on the basis of the standards for vehicle assessments specified by the client. The expert makes the findings in the individual case on the basis of his own expertise and at his own expert discretion.

**Vehicle identification:**

TMBJJ8NX8PY082903

VIN checked and matches documentation

**Vehicle condition:**

Dirty

**Inspection condition:**

Sufficient

**Lifting platform/lifting equipment used:**

No

**Testdrive carried out:**

No

**Engine test carried out:**

Yes

» **Remarks**

This copy was generated electronically. It is valid without an original signature.

## » Commercial Pictures



Front Left 3/4



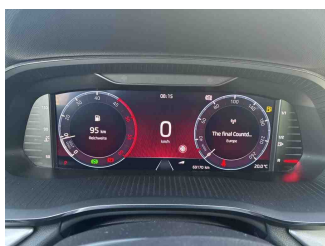
Front Right 3/4



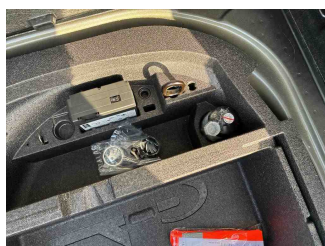
Rear Left 3/4



Rear Right 3/4



Mileage



Tools



Sill outer L



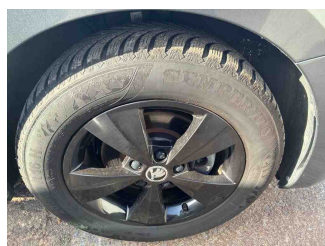
Sill outer R



Chassis nr



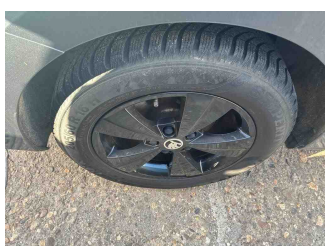
Wheel FL



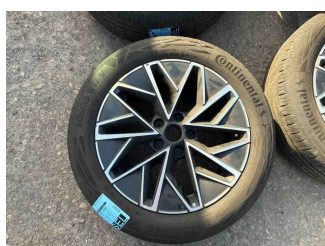
Wheel FR



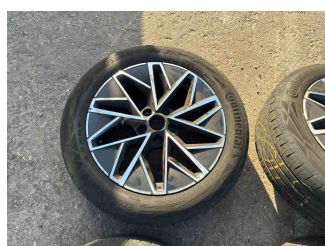
Wheel RL



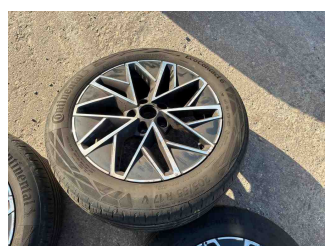
Wheel RR



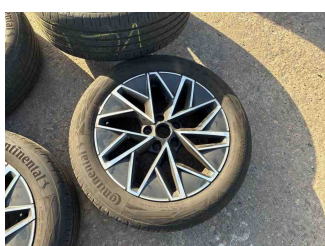
Additional wheel 1



Additional wheel 2



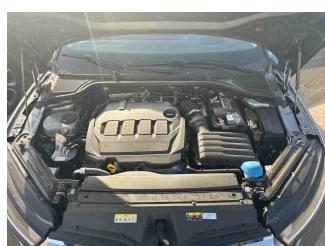
Additional wheel 3



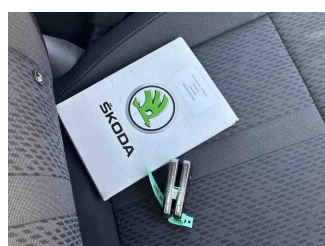
Additional wheel 4



Central console



Engine compartment



Documents



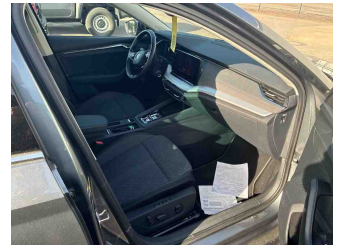
Interior arrangement



Paint thickness Trunk



History Maintenance



Interior - front



Interior - rear



Tirefit expiration date



GPS/Radio

## » Devaluation Damages

### DEVALUATION FACTORS

1 - MOT certificate - Expired - Replace



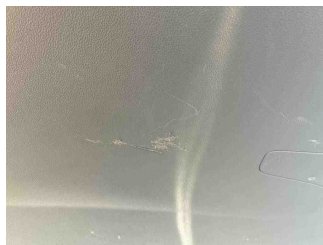
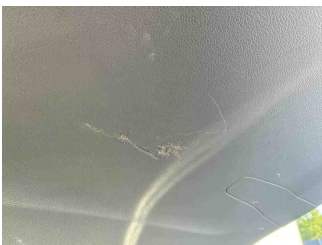
2 - Door seal FL - Damaged - Replace



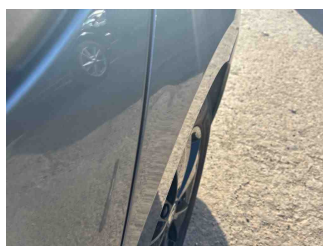
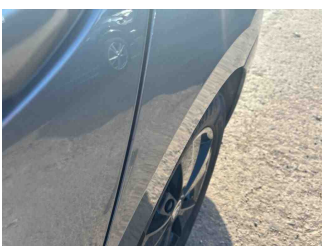
3 - Door seal FR - Damaged - Replace



4 - Boot lid covering R - Scratch(es) - Replace



5 - Side wall RL - Dent(s) - Paintless dent repair



6 - Roof - Scratch(es) - Polish



## USAGE DAMAGES

1 - Windscreen - Stone chip(s) - Acceptable

