

Expertise

Protocol number: 45797499
Order No. / Reference: 26342924
Inspection date: 22 May 2026

Manufacturer: Mercedes-Benz

Model: A 180 d 8G-DCT Lim. AMG Line Advanced Plus

VIN: W1K3G1AB9SJ452336



Vehicle details

Manufacturer / Type / Model / Equipment

Mercedes-Benz A 180 d 8G-DCT Lim. AMG Line Advanced Plus

Vehicle Identification number W1K3G1AB9SJ452336

Mileage (Read) 37,745 km

First registration 26 Mar 2024

Number of holders 1

Next periodical technical inspection 03/2027

Power / Engine displacement 85 kw / 1,950 ccm

Fuel type / Cylinder Diesel / 4

Gearbox / Number of gears Automatic / 8

Type of drive Front drive

Type of vehicle Saloon car

Colour / colour code NACHTSCHWARZ
UNILACK

Doors / Seats 4 / 5

Upholstery type Alcantara / Leather

Colour of upholstery Black



Vehicle details

Maintenance booklet / proof	digital evidence / incomplete	Next maintenance in	-34 Tag(e)
Last service on / at	04/2025 at 20,892 km		
Key is / should be	2 / 2	FZG documents	ZB#2 (B) was available (copy), ZB#1 (S) was not available.
		Letter No.	HB198768
Previous damage / Accident	Detectable	Repainting	Detectable
Inspection conditions	sufficient	Lifting equipment / pit	No
Test drive	Not performed	Engine function test	Performed
Manufacturer key number/ type code number	2222 / AWW 00052		
Emission standard	EURO6;WLTP;EA;PI/CI;M, N1, N2	fine dust sticker	
Permitted total weight	2,030 kg	Empty weight	

Tyres

Mounted tyres

#	Tyre size	Type of tyre	Manufacturer	Tread depth
1)	225/45 R18 91W	Summer tyres on Light alloy	Bridgestone	3mm / 3mm
2)	225/45 R18 91W	Summer tyres on Light alloy	Bridgestone	4mm / 4mm

Additional tyres

#	Tyre size	Type of tyre	Manufacturer	Tread depth
1)	205/60 R16 92H	Winter tyres on Light alloy	Continental	5mm / 5mm
2)	205/60 R16 92H	Winter tyres on Light alloy	Continental	7mm / 7mm

Replacement

Typ	Tyre size	Type of tyre	Manufacturer	Tread depth
	Tirefit	Expiration date 05/2029		

Legend: Tread depth information for the left tire is listed first, for the right tire it is listed second on the axle in the direction of travel.



Equipment

Standard equipment

- Storage compartment in center console with roller blind
- Adaptive Highbeam Assist
- Airbag: Automatic passenger airbag deactivation
- Airbag: Kneebag for driver
- Airbag: Windowbag for driver and front passenger
- AMG rear apron with chrome trim and visible tailpipe trims
- Traction control (ASR)
- Foldable armrest in the center console for driver and front passenger
- Outdoor temperature display
- Basic services
- Diesel particulate filter
- Third brake light
- Door sills with the lettering "Mercedes-Benz"
- Driving light assistant
- Vehicle key with chrome decorative frame
- Luggage net on driver and passenger seatbacks
- Transmission: 8G-DCT automatic
- Black fabric headliner
- Mechanical child safety lock
- Communication module (LTE) for the use of Mercedes me connect services
- Steering wheel: Multifunction sports steering wheel in Nappa leather
- Navigation: MBUX Navigation Premium
- Package: Light and Visibility Package
- Package: USB Package Plus
- Radio accessories: Digital radio (DAB)
- Radio: Extended MBUX functions
- Radio: MBUX multimedia system
- Tire pressure monitoring system
- Windscreen wipers with rain sensor
- Seat belts A-Class
- Seats: Rear seat backrests foldable 40/20/40 split
- Seats: Sports seats
- Power outlet: 12V connection
- TIREFIT with tire inflation compressor
- Pre-installation for digital key handover
- Electronic immobilizer
- Central locking
- ABS - Anti-lock Braking System
- Adaptive brake light flashing
- Airbag: Driver and front passenger
- Airbag: Side airbag for driver and front passenger
- AMG floor mats
- AMG sports pedal assembly made of brushed stainless steel with rubber studs
- ATTENTION ASSIST
- Heated exterior mirrors (left and right), electrically adjustable from inside
- Brake assist, active
- Double cup holder at the front
- ECO start/stop function
- Electronic Stability Program (ESP)
- Chassis: Comfort chassis with lowered suspension
- Electric windows (4-way)
- Speed Limit Assistant
- Heated rear window
- KEYLESS-GO start function
- THERMATIC automatic climate control
- Rear headrests (3)
- LED High Performance Headlights
- Steering: Direct steering
- Mercedes-Benz emergency call system
- Package: AMG Line Advanced
- Package: Seating comfort
- Upholstery: ARTICO leatherette/MICROCUT microfiber
- Radio accessories: USB interface in the storage compartment & 2 USB interfaces in the rear center console
- Radio accessories: Central Media Display
- Remote Services
- Crosswind Assist
- Seats: 4-way lumbar support
- Seats: Heated seats for driver and front passenger
- Lane Keeping Assist, active
- Cruise control
- Touchpad
- High-visibility vest for drivers
- Heat-insulating glass, green all around
- Decorative elements microfiber MICROCUT



Extra equipment

- GUARD 360° Vehicle Protection Plus (Break-in and theft warning - Towing protection with visual and audible warning upon detected change in position - Audible alarm - Interior monitoring (triggers upon movement inside the vehicle) - Assistance with vehicle theft (theft assistance), free for 3 years from activation - Emergency key deactivation, free for 3 years from activation - GUARD 360° label on the front side windows - Collision detection, free for 3 years from activation, additionally with camera images in conjunction with 360°)
- Upholstery: ARTICO leatherette/MICROCUT microfiber, two-tone
- Wheels: 45.7 cm (18") AMG light-alloy wheels, 4-piece set in 5-twin-spoke design (aerodynamically optimized, painted black and polished with 225/45 R 18 tires on 7.5 J x 18 ET 49 rims)
- Type designation removed from trunk lid
- Paint finish: Solid special paint
- Package: AMG Line Advanced Plus (Saloon) (AMG Line Advanced - Ambient lighting - Fully digital instrument display - Wireless charging system for mobile devices in the front - Rear armrest - KEYLESS-GO Comfort Package - AMG Line - Sports brake system - Fingerprint scanner)
- Package: Night (AMG) (Exterior mirror housings painted in night black solid color - Beltline trim strip and window line trim strip in high-gloss black - Heat-insulating dark tinted glass from the B-pillar - AMG front apron with front splitter in high-gloss black - AMG rear apron with trim element in high-gloss black - 45.7 cm (18") AMG light-alloy wheels in 5-twin-spoke design, aerodynamically optimized, painted black and polished with 225/45 R 18 on 7.5 J x 18 ET49)
- Phone accessories: Smartphone integration (consisting of Apple CarPlay and Android Auto)

Brief expert findings

Documents submitted	At the time of the inspection, the vehicle registration certificate Part 2 (title) was available, but the vehicle registration certificate Part 1 (document) was not. (Copy)
VIN comparison	The vehicle identification number (VIN) was read from the vehicle and its conformity with the submitted documents was confirmed by the undersigned during the inspection.
Inspection	The inspection conditions were sufficient for the assessment of the vehicle. No lifting equipment or pit was available for inspecting the vehicle. Therefore, inspection of the vehicle's underside was only possible to a limited extent.
Test drive	No test drive/shunting maneuver was carried out during the inspection of the vehicle.
Engine function test	An engine test run was performed.

Value reducing factors

No.	Component group	Description
1	Door - rear right side	Door - Dent / paintcoat damage - Smart repair
2	Bonnet	Bonnet - Scratch(es) - Smart repair
3	Misc.	Inspection / maintenance - Due - Perform

Wear and tear

No.	Component group	Description
1	Body	A-pillar - left side - Stone chips - No deduction
2	Roof	Roof - Scratch(es) - No deduction
3	Sill - left side	Trim - Scratch(es) - No deduction
4	Body	A-pillar - right side - Stone chips - No deduction

The vehicle shows signs of wear and tear commensurate with its age and use.

Missing parts

Description

Documents - Log book



Previous damages

No.	Previous damage	Extent of damage (Net)
1	Rear, Side - left, Provided by user / customer, from 31 Mar 2025	3.716,62 €
2	Rear, Provided by user / customer, from 14 Nov 2025	3.750,81 €
3	Side right, Provided by user / customer, from 6 Jan 2025	4.501,47 €

Repainting

No. Repainting

- 1 Side panel - rear left side, Professionally carried out, Invoice of repair done Non-existent

Paint coat thickness measurement

Side panel - rear left side 162 µm

Order/Scope of Order

An order was placed to prepare a sales report for the described vehicle. This report includes the following:

- Description of key vehicle information
- Documentation of equipment features
(Delivery by third-party service providers)
- Documentation of damage, defects, missing parts
- Documentation of prior damage, unrepaired prior damage, repainting
- A brief visual or functional inspection of the equipment details, if possible.
(Functional testing of driver assistance systems is not included in the scope of services!)
- a photographic documentation of the vehicle

Basis for the order

This product is based on the guidelines for vehicle returns and valuations published by Alphabet Fleet GmbH. The expert makes the specific findings in each individual case objectively, within the framework of the prescribed standards, based on their own expertise.

The vehicle inspection takes place in a fully assembled, unassembled state.

Damage or defects that can only be detected during disassembly/diagnostic work or through further investigation remain within the realm of prognostic risk. An increased risk exists due to concealed defects caused by fraudulent misrepresentation and which were not identifiable by the expert.

Damage or defects resulting from normal use or wear and tear of the vehicle will be accepted in accordance with the applicable standard.

There was no explicit identification or monetary consideration of the expected features within the product.

Features which, in their nature and extent, slightly exceed normal use but do not constitute unacceptable damage, will be documented and indicated as signs of wear, if applicable.

Damage or defects that, according to the applicable standard, can no longer be attributed to normal use or wear and tear are listed under "Value Reducing Factors" in the product description.

Depending on the product specification, a monetary ID can be provided. If this takes place, the costs can be 100% d or pro rata depending on the vehicle's age and mileage.

Previous damages

According to available information previous damages were repaired at the vehicle. Traces of repairs, which allow conclusions about the area of repair, were not recognizable during the inspection.



Figure 1: Diagonal front (left)



Figure 2: Diagonal front (right)



Figure 3: Diagonal rear (left)



Figure 4: Diagonal rear (right)



Figure 5: Interior - front



Figure 6: Interior - rear



Figure 7: Instrument cluster



Figure 8: Instrument panel



Figure 9: Interior 360° view



Figure 10: Cargo area



Figure 11: VIN



Figure 12: Mounted tyres



Figure 13: Documents



Figure 14: Additional tyres



Figure 15: Navigation



Figure 16: Misc.

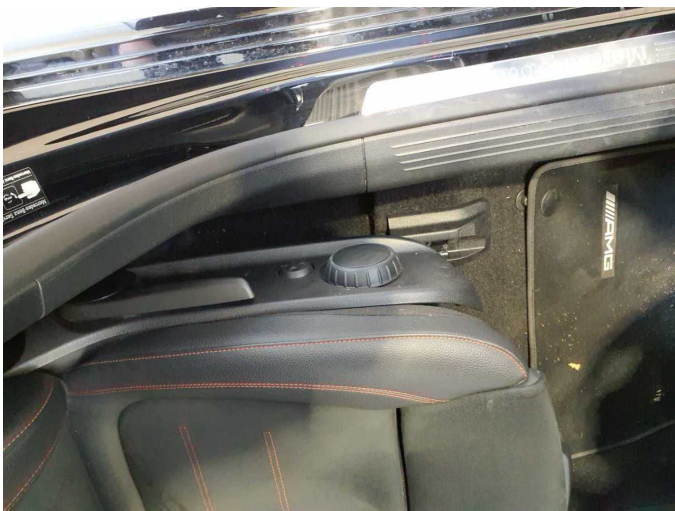


Figure 17: Misc.



Figure 18: Misc.



Figure 19: Misc.



Figure 20: Misc.



Figure 21: Misc.



Figure 22: Misc.

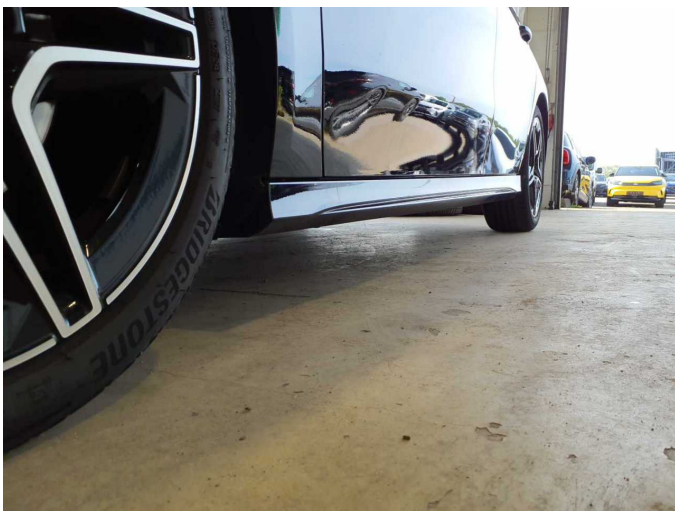


Figure 23: Misc.



Figure 24: Misc.



Figure 25: Misc.



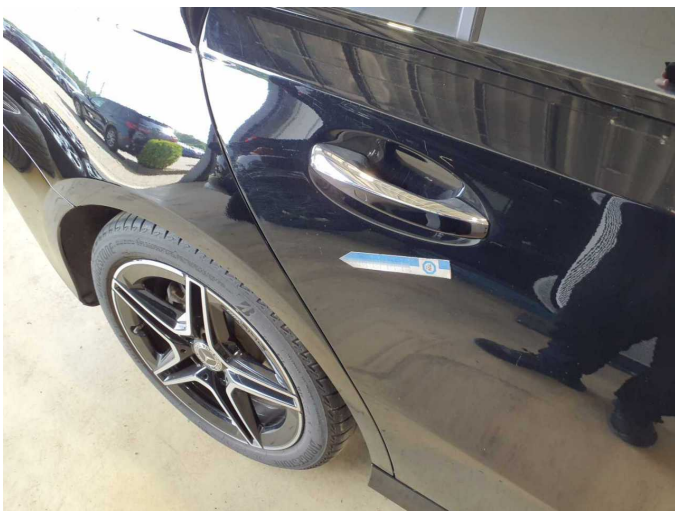
Figure 26: Misc.



Figure 27: Misc.



Figure 28: Misc.



Damage 1: Door - rear right side: Door - Dent / paintcoat damage - Smart repair



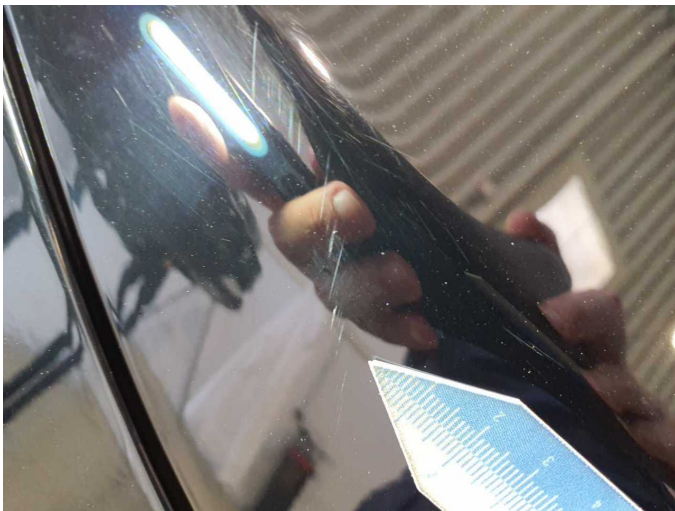
Damage 1: Door - rear right side: Door - Dent / paintcoat damage - Smart repair



Damage 1: Door - rear right side: Door - Dent / paintcoat damage - Smart repair



Damage 2: Bonnet: Bonnet - Scratch(es) - Smart repair



Damage 2: Bonnet: Bonnet - Scratch(es) - Smart repair



Damage 3: Misc.: Inspection / maintenance - Due - Perform



Repainting 1: Side panel - rear left side



Repainting 1: Side panel - rear left side



Wartungshistorie

(gemäß Auftraggeber Informationen)

Fahrgestellnummer: W1K3G1AB9SJ452336

Hersteller / Modell: MERCEDES-BENZ MB A 180 d 8G-DCT Lim. AMG Line Advanced Plus

Datum	KM-Stand	Beschreibung
10.04.2025	20.892	Regelwartungsdienst