

Expertise

Protocol number: 46221042
Order No. / Reference: 26417420
Inspection date: 26 Jun 2026

Manufacturer: Ford

Model: S-Max 2.0 EcoBlue Aut. TITANIUM

VIN: WF0JXXWPCJMD26645



Vehicle details

Manufacturer / Type / Model / Equipment

Ford S-Max 2.0 EcoBlue Aut. TITANIUM

Vehicle Identification number WF0JXXWPCJMD26645

Mileage (Read) 149,229 km

First registration 25 Jan 2022

Number of holders 1

Power / Engine displacement 110 kw / 1,995 ccm

Fuel type / Cylinder Diesel / 4

Gearbox / Number of gears Automatic / 8

Type of drive Front drive

Type of vehicle Station wagon

Colour / colour code Frozen White

Doors / Seats 5 / 5

Upholstery type Cloth

Colour of upholstery Black



Vehicle details

Maintenance booklet / proof	digital proof / complete	Next maintenance in	3,700 km
Last service on / at	08/2025 at 133,394 km		
Key is / should be	1 / 2	FZG documents	ZB#2 (B) was available (copy), ZB#1 (S) was not available.
		Letter No.	GH395147
Previous damage / Accident	Detectable	Repainting	Detectable
Inspection conditions	sufficient	Lifting equipment / pit	No
Test drive	Not performed	Engine function test	Performed
Manufacturer key number/ type code number	8566 / BKM 01185		
Emission standard	EURO6;WLTP;AP;PI/CI; M, N1 I	fine dust sticker	
Permitted total weight	2,555 kg	Empty weight	

Tyres

Mounted tyres

#	Tyre size	Type of tyre	Manufacturer	Tread depth
1)	235/55 R17 103V	Summer tyres on Light alloy	Continental	5mm / 5mm
2)	235/55 R17 103V	Summer tyres on Light alloy	Continental	5mm / 5mm

Additional tyres

#	Tyre size	Type of tyre	Manufacturer	Tread depth
1)	235/55 R17 103V	Winter tyres on Light alloy	Goodyear	6mm / 6mm
2)	235/55 R17 103V	Winter tyres on Light alloy	Goodyear	6mm / 6mm

Replacement

Typ	Tyre size	Type of tyre	Manufacturer	Tread depth
	Tirefit	Expiration date 10/2021		

Legend: Tread depth information for the left tire is listed first, for the right tire it is listed second on the axle in the direction of travel.

TÜV SÜD Auto Partner GmbH
Wiesenring 2
04159 Leipzig

Inspection location
ARS Altmann AG Automobillogistik
Römerstraße 3
64560 Riedstadt



Equipment



Standard equipment

- Storage compartments (illuminated glove compartment - map pockets on the driver's and passenger's seat backrests)
- Exterior mirrors in body color, driver and passenger side, electrically adjustable and heated (with integrated turn signals and ambient lighting and electrically foldable)
- Attachment points for safety partition grilles (attachment points 2nd row of seats)
- Hill start assist
- third brake light
- Roof rails "aluminum look"
- Diesel particulate filter (DPF)
- Tachometer
- Driver information system display 25.4 cm color (on-board computer with fuel consumption and mileage information as well as outside temperature display)
- Electric front and rear windows (with anti-pinch protection and automatic opening and closing function)
- High Beam Assist
- Ford Easy Fuel (The Ford Easy Fuel convenience refueling system eliminates the need for a separate internal fuel filler cap and prevents misfueling by detecting the size difference between petrol and diesel nozzles. The filler neck only opens when the correct fuel is used.)
- Luggage compartment cover (removable)
- Cruise control system with intelligent speed limiter (interior mirror, automatically dimming - traffic sign recognition system)
- rear window wiper
- Interior mirror, automatically dimming
- Isofix mounting (on all seats in the 2nd row)
- Electric child safety lock
- Air conditioning with automatic temperature control (separately adjustable for driver and passenger side (2-zone automatic climate control))
- Paint finish: Solid
- Steering wheel: Steering column, adjustable in height and reach
- Front and rear reading lights (with LED technology)
- MyKey key system (individually programmable second key) (setting options include: - Limiting the maximum speed and radio volume (to max. volume 15 out of 32) - Speed warning (when the set speed limit is exceeded) - Safety assistance systems cannot be deactivated - Extended warning system for unfastened seat belts)
- Fog light
- Emergency brake light (pulsating illumination of the brake lights during hard braking)
- Package: Winter (Heated windscreen - Heated leather steering wheel - Individually and variably heated front seats)
- Front and rear parking pilot system
- Tire repair kit (for use at a maximum speed of 80 km/h)
- LED taillights
- Headlight dipped beam with switch-off delay including "greeting function"
- Ambient lighting in the front (including door storage, front door handle and footwell lighting)
- Anti-lock braking system (ABS) (with Electronic Stability Program (ESP), Roll Stability Control (RSC) and Traction Control System (TCS))
- Attachment points for safety partition grilles (attachment points 1st row of seats)
- Tires: 7.5 J x 17 alloy wheels (4) with 235/55 R 17 tires (in 5x2-spoke design)
- Overhead console (with glasses storage compartment and fold-out additional mirror for eye contact with rear passengers)
- Electronic Shifter
- Lane Assist including Lane Keeping Assist and Driver Alert (warns the driver of an unintentional lane change via short steering wheel vibrations (without activation of the turn signal) - additionally, active steering support assists in returning to the lane)
- Electronic parking brake
- Ford EasyFold: 2nd row seat backrests fold down electrically at the touch of a button.
- Ford Power Start function (keyless start)
- Ford Power Start function with Ford Key Free system (keyless starting and locking/unlocking)
- Luggage compartment lighting
- Transmission: 8-speed automatic transmission (with manual shift option)
- Back window, heater
- Interior lighting with delay circuit
- Intelligent Protection System (IPS): - Front headrests, 4-way height and tilt adjustable - Front airbag for driver and front passenger - Driver's knee airbag - Head and shoulder airbags, front and for 2nd row of seats - Side airbag for driver and front passenger - Side airbag for outer rear seats of the 2nd row - Seat belt tensioners and belt force limiters, front - 3-point seat belts on all seats, height adjustable in the front)
- Steering wheel: Multifunction leather steering wheel
- Front center console with padded armrest (storage compartment and 2 cup holders)
- Ford navigation system including Ford SYNC 3 with AppLink, touchscreen, DAB/DAB+ and FordPass Connect (communication and entertainment with voice control - Android Auto, Apple CarPlay - Bluetooth hands-free system and audio streaming - eCall emergency call system - live traffic - Wi-Fi hotspot - radio/CD player, 2 USB ports, 8 speakers, steering wheel controls - 20.3 cm screen - DAB/DAB+ - acoustic and visual route guidance, dynamic navigation, lane keeping assist, road map for Europe - extended voice control and voice output - Michelin travel guide for Europe - quick address search)
- Upholstery: Cloth
- Tire Pressure Monitoring System (TPMS)
- Windscreen wipers with rain sensor



- Seats: Driver and front passenger seats, 4-way manually adjustable (including manually adjustable lumbar support)
- Seats: Front sports seats (with enhanced lateral support)
- Seats: Front seats can be heated individually and variably.
- Start-stop system
- 230 volt socket
- Bumpers painted in body color
- Trays on the front seatbacks
- Premium carpet floor mats front and rear (as well as in the 3rd row of seats if ordered as an optional extra)
- Warning system for unfastened seat belts for the 1st and 2nd rows of seats (as well as the 3rd row of seats if ordered as an optional extra)
- Cigarette lighter (and ashtray in the center console)

- Headlight assistant with day/night sensor
- Electro-mechanical power steering (EPAS - Electric Power Assisted Steering)
- Seats: Flexible seating system "FoldFlatSystem (FFS)" (2nd row of seats with 3 individual seats - adjustable longitudinally - seat backrests adjustable for tilt and individually foldable - headrests retractable)
- Power outlet: 12-volt connection in the luggage compartment and in the center console
- LED daytime running lights
- Traffic sign recognition system
- Lashing eyes in the luggage compartment
- Immobiliser
- Central locking with remote control (remote luggage compartment release - second folding vehicle key)

Extra equipment

- Package: Business III (Automatic) (Sony Navigation incl. Ford SYNC 3, AppLink, Touchscreen, Voice Control, Radio/CD Player, MP3-compatible, 2 USB ports, 390-watt premium sound system, 12 speakers, steering wheel remote control, Bluetooth hands-free system, FordPass Connect, eCall, DAB/DAB+, Adaptive LED headlights with glare-free high beam, ACC, Traffic Jam Assist, Pre-Collision Assist, Forward Collision Warning, Emergency Brake Assist, Front and Rear View Camera, Blind Spot Assist, Cross Traffic Alert, Dynamic Distance Control, Power Tailgate with Sensors, Ford Key Free System, Park Assist)

- Anti-theft alarm system including double locking (with interior monitoring)
- Detachable towbar (including ESP trailer stabilization)
- Paint finish: Frost White
- Safety partition grille, mounting behind front seats
- Seats: Ford ergonomic seat (driver's seat 18-way adjustable: - length, height and tilt of the seat - extendable thigh support - adjustable backrest - lumbar support 4-way electrically adjustable - passenger seat, 4-way manually adjustable, incl. manually adjustable lumbar support)

Brief expert findings

Documents submitted	At the time of the inspection, the vehicle registration certificate Part 2 (title) was available, but the vehicle registration certificate Part 1 (document) was not. (Copy)
VIN comparison	The vehicle identification number (VIN) was read from the vehicle and its conformity with the submitted documents was confirmed by the undersigned during the inspection.
Inspection	The inspection conditions were sufficient for the assessment of the vehicle. No lifting equipment or pit was available for inspecting the vehicle. Therefore, inspection of the vehicle's underside was only possible to a limited extent.
Test drive	No test drive/shunting maneuver was carried out during the inspection of the vehicle.
Engine function test	An engine test run was performed.



Value reducing factors

No.	Component group	Description
1	Misc.	Main inspection - No evidence - No deduction
2	Equipment	Tirefit filler - Expired - Replace
3	Trim / covers	Cargo area - lining - right side - Scratch(es) - Loss in value
4	Trim / covers	Cargo area - lining -left side - Scratch(es) - Loss in value
5	Trim / covers	Boot lid - interior trim - Scratch(es) - Loss in value
6	Trim / covers	Roof lining - Holes - Smart repair
7	Roof	Roof - Glued / labelled - De-glue / neutralise
8	Body	Body (Flugrost-Mehrkosten möglich) - Soiled - Conditioning
9	Side panel - rear right side	Side panel (Lack blättert ab + Korrosion) - Paint defect - Repair and paint
10	Rear bumper	Rear bumper - Dent / paintcoat damage - Repair and paint

Missing parts

Description

Interior - Boot cover / roller cover (Halterung)

Documents - Service book

Equipment - Vehicle key

Previous damages

No.	Previous damage	Extent of damage (Net)
1	Roof, Front, Side - left, Provided by user / customer, from 22 Jun 2023	4.674,80 €
2	Roof, Front, Side - left, Provided by user / customer, from 7 Sept 2022	7.542,42 €

Repainting

No. Repainting

- Roof rail - left side, Professionally carried out, Invoice of repair done Non-existent
- Roof rail - right side, Professionally carried out, Invoice of repair done Non-existent
- Bonnet, Professionally carried out, Invoice of repair done Non-existent
- Side panel - rear left side, Professionally carried out, Invoice of repair done Non-existent
- Side panel - rear right side, Professionally carried out, Invoice of repair done Non-existent

Paint coat thickness measurement

Roof rail - left side	299 µm	Roof rail - right side	264 µm
Bonnet	315 µm	Side panel - rear left side	219 µm
Side panel - rear right side	203 µm		



Order/Scope of Order

An order was placed to prepare a sales report for the described vehicle. This report includes the following:

- Description of key vehicle information
- Documentation of equipment features
(Delivery by third-party service providers)
- Documentation of damage, defects, missing parts
- Documentation of prior damage, unrepaired prior damage, repainting
- A brief visual or functional inspection of the equipment details, if possible.
(Functional testing of driver assistance systems is not included in the scope of services!)
- a photographic documentation of the vehicle

Basis for the order

This product is based on the guidelines for vehicle returns and valuations published by Alphabet Fleet GmbH. The expert makes the specific findings in each individual case objectively, within the framework of the prescribed standards, based on their own expertise.

The vehicle inspection takes place in a fully assembled, unassembled state.

Damage or defects that can only be detected during disassembly/diagnostic work or through further investigation remain within the realm of prognostic risk. An increased risk exists due to concealed defects caused by fraudulent misrepresentation and which were not identifiable by the expert.

Damage or defects resulting from normal use or wear and tear of the vehicle will be accepted in accordance with the applicable standard.

There was no explicit identification or monetary consideration of the expected features within the product.

Features which, in their nature and extent, slightly exceed normal use but do not constitute unacceptable damage, will be documented and indicated as signs of wear, if applicable.

Damage or defects that, according to the applicable standard, can no longer be attributed to normal use or wear and tear are listed under "Value Reducing Factors" in the product description.

Depending on the product specification, a monetary ID can be provided. If this takes place, the costs can be 100% or pro rata depending on the vehicle's age and mileage.

Previous damages

According to available information previous damages were repaired at the vehicle. Traces of repairs, which allow conclusions about the area of repair, were not recognizable during the inspection.

Comments

Die Unterbodenbesichtigung war nur ebenerdig & eingeschränkt möglich. Mehrkosten möglich.



Figure 1: Diagonal front (left)



Figure 2: Diagonal front (right)



Figure 3: Diagonal rear (left)



Figure 4: Diagonal rear (right)



Figure 5: Interior - front



Figure 6: Interior - rear



Figure 7: Instrument cluster



Figure 8: Instrument panel



Figure 9: Interior 360° view



Figure 10: Cargo area



Figure 11: VIN

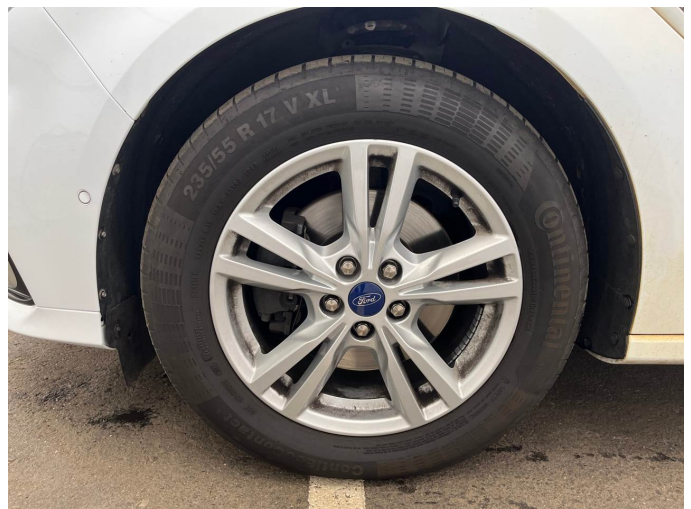


Figure 12: Mounted tyres

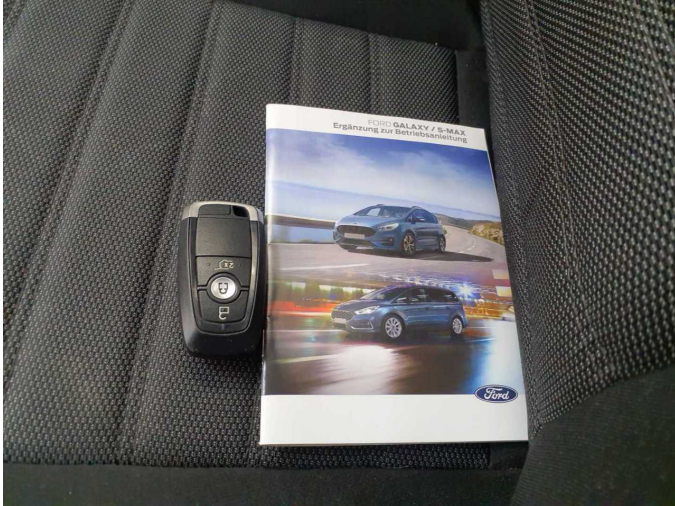


Figure 13: Documents



Figure 14: Documents



Figure 15: Additional tyres



Figure 16: Navigation



Figure 17: Misc.



Figure 18: Misc.



Figure 19: Misc.



Figure 20: Misc.



Figure 21: Misc.



Figure 22: Misc.

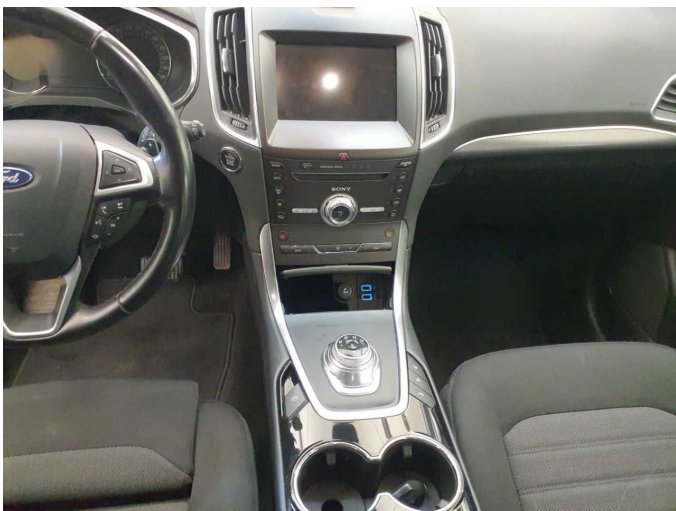


Figure 23: Misc.



Figure 24: Misc.



Figure 25: Misc.



Figure 26: Misc.

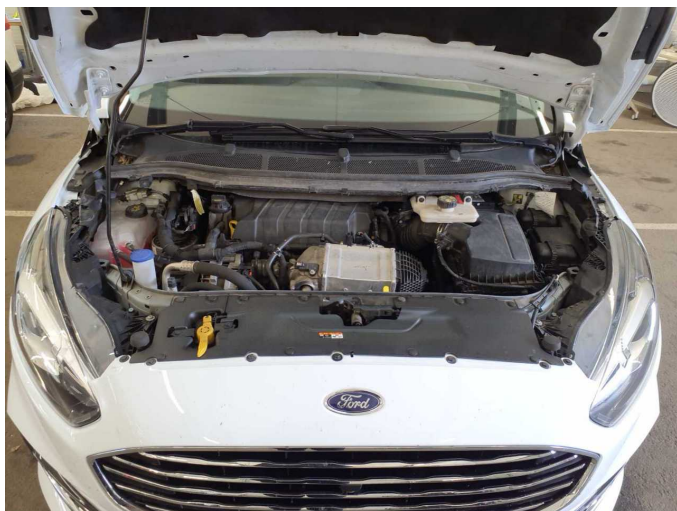


Figure 27: Misc.



Figure 28: Misc.

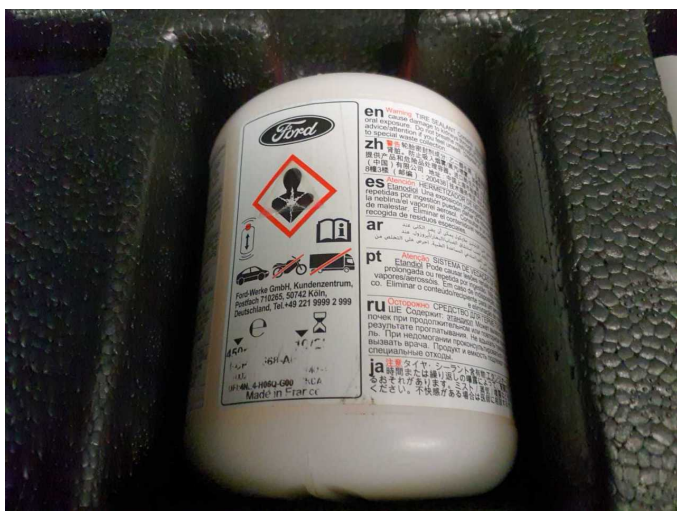


Figure 29: Misc.



Figure 30: Misc.



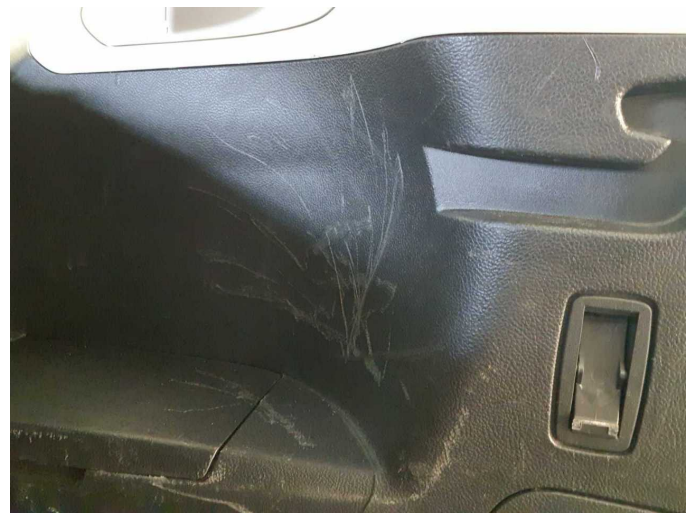
Figure 31: Misc.



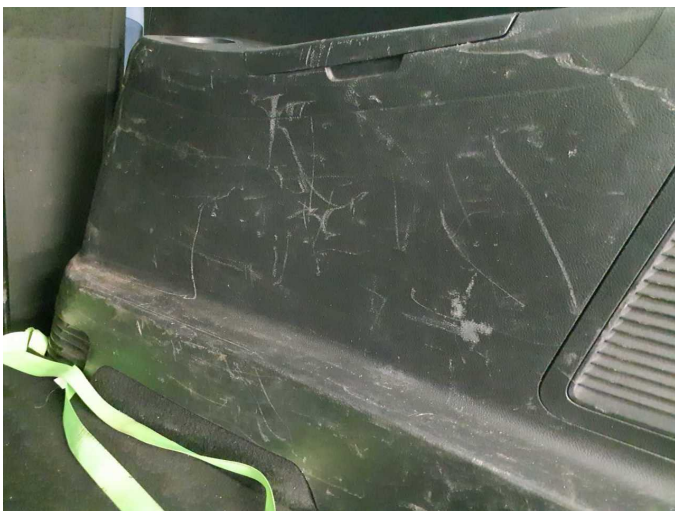
Damage 2: Equipment: Tirefit filler - Expired - Replace



Damage 3: Trim / covers: Cargo area - lining - right side - Scratch(es) - Loss in value



Damage 3: Trim / covers: Cargo area - lining - right side - Scratch(es) - Loss in value



Damage 3: Trim / covers: Cargo area - lining - right side - Scratch(es) - Loss in value



Damage 3: Trim / covers: Cargo area - lining - right side - Scratch(es) - Loss in value



Damage 4: Trim / covers: Cargo area - lining -left side - Scratch(es) - Loss in value



Damage 4: Trim / covers: Cargo area - lining -left side - Scratch(es) - Loss in value



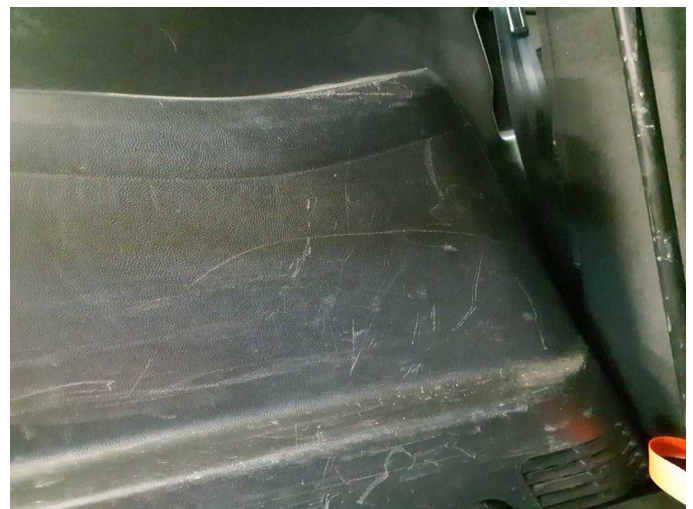
Damage 4: Trim / covers: Cargo area - lining -left side - Scratch(es) - Loss in value



Damage 4: Trim / covers: Cargo area - lining -left side - Scratch(es) - Loss in value



Damage 4: Trim / covers: Cargo area - lining -left side - Scratch(es) - Loss in value



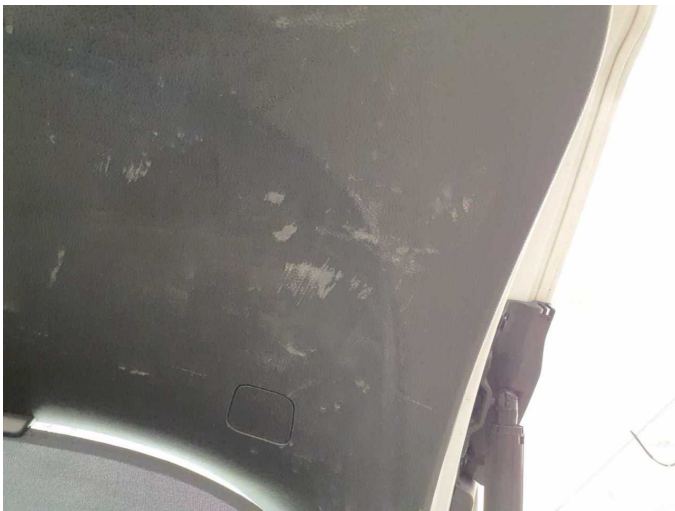
Damage 4: Trim / covers: Cargo area - lining -left side - Scratch(es) - Loss in value



Damage 5: Trim / covers: Boot lid - interior trim - Scratch(es) - Loss in value



Damage 5: Trim / covers: Boot lid - interior trim - Scratch(es) - Loss in value



Damage 5: Trim / covers: Boot lid - interior trim - Scratch(es) - Loss in value



Damage 5: Trim / covers: Boot lid - interior trim - Scratch(es) - Loss in value



Damage 5: Trim / covers: Boot lid - interior trim - Scratch(es) - Loss in value



Damage 6: Trim / covers: Roof lining - Holes - Smart repair



Damage 6: Trim / covers: Roof lining - Holes - Smart repair



Damage 6: Trim / covers: Roof lining - Holes - Smart repair



Damage 6: Trim / covers: Roof lining - Holes - Smart repair



Damage 6: Trim / covers: Roof lining - Holes - Smart repair



Damage 7: Roof: Roof - Glued / labelled - De-glue / neutralise



Damage 8: Body: Body (Flugrost-Mehrkosten möglich) - Soiled - Conditioning



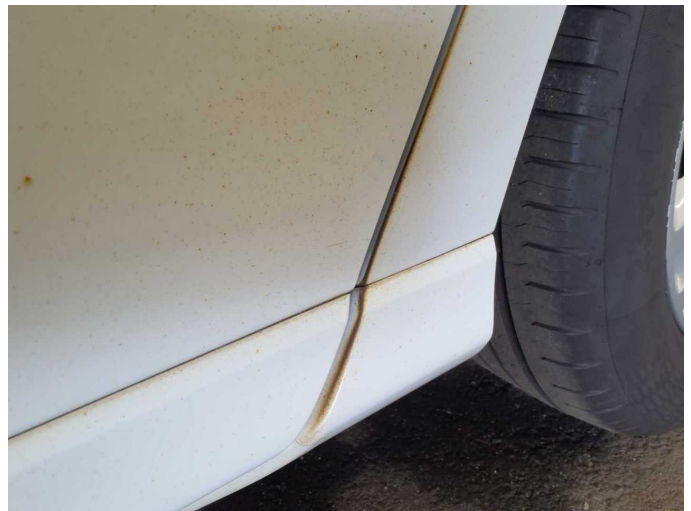
Damage 8: Body: Body (Flugrost-Mehrkosten möglich) - Soiled - Conditioning



Damage 8: Body: Body (Flugrost-Mehrkosten möglich) - Soiled - Conditioning



Damage 8: Body: Body (Flugrost-Mehrkosten möglich) - Soiled - Conditioning



Damage 8: Body: Body (Flugrost-Mehrkosten möglich) - Soiled - Conditioning



Damage 8: Body: Body (Flugrost-Mehrkosten möglich) - Soiled - Conditioning



Damage 8: Body: Body (Flugrost-Mehrkosten möglich) - Soiled - Conditioning



Damage 8: Body: Body (Flugrost-Mehrkosten möglich) - Soiled - Conditioning



Damage 8: Body: Body (Flugrost-Mehrkosten möglich) - Soiled - Conditioning



Damage 8: Body: Body (Flugrost-Mehrkosten möglich) - Soiled - Conditioning



Damage 8: Body: Body (Flugrost-Mehrkosten möglich) - Soiled - Conditioning



Damage 8: Body: Body (Flugrost-Mehrkosten möglich) - Soiled - Conditioning



Damage 8: Body: Body (Flugrost-Mehrkosten möglich) - Soiled - Conditioning



Damage 9: Side panel - rear right side: Side panel (Lack blättert ab + Korrosion) - Paint defect - Repair and paint



Damage 9: Side panel - rear right side: Side panel (Lack blättert ab + Korrosion) - Paint defect - Repair and paint



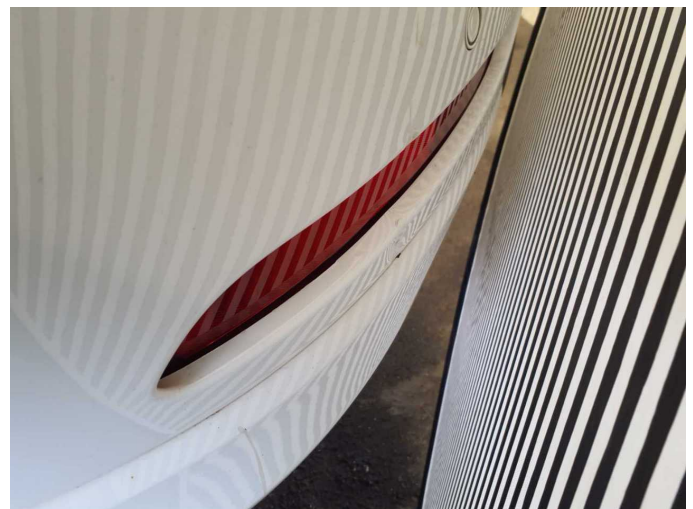
Damage 10: Rear bumper: Rear bumper - Dent / paintcoat damage - Repair and paint



Damage 10: Rear bumper: Rear bumper - Dent / paintcoat damage - Repair and paint



Damage 10: Rear bumper: Rear bumper - Dent / paintcoat damage - Repair and paint



Damage 10: Rear bumper: Rear bumper - Dent / paintcoat damage - Repair and paint



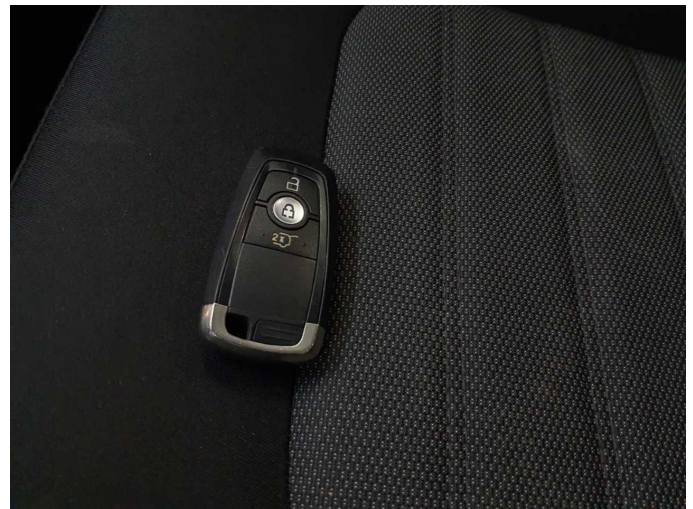
Damage 10: Rear bumper: Rear bumper - Dent / paintcoat damage - Repair and paint



Missing part 1: Interior: Boot cover / roller cover (Halierung) - Missing - Replace



Missing part 1: Interior: Boot cover / roller cover (Halierung) - Missing - Replace



Missing part 3: Equipment: Vehicle key - Missing - Replace



Repainting 1: Roof rail - left side



Repainting 1: Roof rail - left side



Repainting 2: Roof rail - right side



Repainting 2: Roof rail - right side



Repainting 3: Bonnet



Repainting 3: Bonnet



Repainting 4: Side panel - rear left side



Repainting 4: Side panel - rear left side



Repainting 5: Side panel - rear right side



Repainting 5: Side panel - rear right side



Wartungshistorie

(gemäß Auftraggeber Informationen)

Fahrgestellnummer: WF0JXXWPCJMD26645

Hersteller / Modell: FORD FORD S-Max 2.0 EcoBlue Aut. TITANIUM

Datum	KM-Stand	Beschreibung
26.11.2025	140.994	Batterie ern; Systemtest/Eigendiagnose
11.08.2025	133.394	Motoröl b. Wartung; Ölfilter ern; Ölwechsel; Wartung Sonstiges
11.06.2025	126.454	Bremse Sonstiges; Bremsklötze vorne; Bremsscheiben + Klötze v; Bremsscheiben vorne
16.04.2025	120.864	Getriebeöl ern/prüfen; Reparatur Sonstiges; Systemtest/Eigendiagnose
03.02.2025	116.422	Kraftstofffilter ern; Luftfiltereinsatz ern; Motoröl b. Wartung; Ölfilter ern; Regelwartungsdienst; Wartung Sonstiges
06.12.2024	110.735	Getriebeöl ern/prüfen; Systemtest/Eigendiagnose; Wartung Sonstiges
28.11.2024	110.496	Systemtest/Eigendiagnose
25.06.2024	99.523	Bremse Sonstiges; Bremsklötze hinten; Bremsscheiben + Klötze h; Bremsscheiben hinten; Motoröl b. Wartung; Ölfilter ern; Ölwechsel; Wartung Sonstiges
23.04.2024	92.188	Bremse Sonstiges; Bremsklötze vorne; Bremsscheiben + Klötze v; Bremsscheiben vorne; Systemtest/Eigendiagnose
15.10.2022	30.663	Bremse Sonstiges; Bremsklötze vorne; Bremsscheiben + Klötze v; Bremsscheiben vorne; Motoröl b. Wartung; Ölfilter ern; Regelwartungsdienst; Wartung Sonstiges