

Expertise

Protocol number: 46153695
Order No. / Reference: 26512589
Inspection date: 25 Jun 2026

Manufacturer: Skoda

Model: Enyaq iV 80

VIN: TMBJC9NY8NF042824



Vehicle details

Manufacturer / Type / Model / Equipment

Skoda Enyaq iV 80

Vehicle Identification number TMBJC9NY8NF042824

Mileage (Read) 99,239 km

First registration 13 Apr 2022

Number of holders 1

Next periodical technical inspection 04/2027
(Report on hand)

Power / Engine displacement 150 kw / 0 ccm

Fuel type / Cylinder Electric / 0

Gearbox / Number of gears Direct drive / 1

Type of drive Rear drive

Type of vehicle SUV

Colour / colour code Blau Race Metallic

Doors / Seats 5 / 5

Upholstery type Cloth / leather
combination

Colour of upholstery Dark grey-Grey



Vehicle details

Maintenance booklet / proof	digital proof / complete	Next maintenance in	-67 Tag(e)
Last service on / at	04/2024 at 44,759 km		
Key is / should be	2 / 2	FZG documents	ZB#2 (B) was available (copy), ZB#1 (S) was not available.
		Letter No.	GJ963941
Previous damage / Accident	Detectable	Repainting	None detectable
Inspection conditions	sufficient	Lifting equipment / pit	No
Test drive	Not performed	Engine function test	Performed
Manufacturer key number/ type code number	8004 / AWS 00100		
Emission standard	2017/1151;WLTP;reine Elektrofz	fine dust sticker	
Permitted total weight	2,600 kg	Empty weight	

Tyres

Mounted tyres				
#	Tyre size	Type of tyre	Manufacturer	Tread depth
1)	235/45 R21 101T	Summer tires (with run-flat tires) on Light alloy	Pirelli	6mm / 6mm
2)	255/40 R21 102T	Summer tires (with run-flat tires) on Light alloy	Pirelli	6mm / 6mm
Additional tyres				
#	Tyre size	Type of tyre	Manufacturer	Tread depth
1)	235/55 R19 105T	Winter tyres on Light alloy	Goodyear	7mm / 7mm
2)	255/50 R19 107T	Winter tyres on Light alloy	Goodyear	6mm / 6mm

Legend: Tread depth information for the left tire is listed first, for the right tire it is listed second on the axle in the direction of travel.



Equipment

Standard equipment

- Storage compartments
- Airbag, driver and passenger
- Airbag, front side airbags
- Anti-lock braking system (ABS)
- Evasive steering assist including turn assist
- Outdoor temperature display
- Hill start assist
- Digital instrument cluster (Virtual Cockpit)
- E-Sound
- Increased battery charging power max. 125 kW incl. 1 year free monthly basic fee at Ionity
- Front radar assistant with pedestrian and cyclist detection and city emergency braking function
- Tinted windows
- rear window wiper
- Isofix anchorage on the front passenger seat
- Child safety locks on the rear doors
- Climatronic air conditioning (2-zone)
- Front and rear headrests are height-adjustable.
- LED headlights with daytime running lights
- LED taillights
- Manual headlight range adjustment
- Package: Drive BASIC
- Radio accessories: SmartLink
- Rain sensor and driving light assistant with coming and leaving home function
- Rear view camera
- Power steering
- Safety lights in the front side doors
- Skoda Care Connect
- Speed limiter
- 12V socket - in the trunk
- Immobiliser
- Airbag, center airbag front
- Airbag, front and rear head airbags
- acoustic windscreen
- Traction control (ASR)
- Electrically adjustable, heated and folding exterior mirrors, including automatic dimming.
- Design Selection Loft
- Third brake light
- Electronic parking brake including auto-hold function
- ESC Electronic Stability Control
- Electric windows front and rear
- Cruise control
- Transmission: 1-speed (EV)
- Heated rear window
- Automatic interior mirror dimming
- Isofix anchorage on the outer rear seats including top tether
- Removable boot cover
- Charging cable for AC charging stations (Mode 3 charging cable, Type 2, 16A)
- Steering wheel adjustable for height and reach
- Package: Chrome
- Front and rear parking sensors
- Radio accessories: Wireless SmartLink
- Tire Mobility Kit
- Tire pressure monitoring
- Rear seat backrest split 60:40, foldable
- Seat belts
- Seats: Front seats are height-adjustable, including manually adjustable lumbar support.
- Lane keeping assistant (Lane Assist)
- Traffic sign recognition
- Central locking including remote control integrated into the key



Extra equipment

- Airbag, rear side airbags
- Luggage net partition
- Mobile charging station "iV Universal Charger" with interchangeable connection adapters
- Package: Drive SPORT PLUS (paddle shifters for adjusting recuperation strength - DCC adaptive chassis including driving profile selection - heated leather steering wheel in sport design with multifunction buttons - steering wheel with hands-off detection - progressive steering)
- Package: Driving Assistance PLUS (Predictive Adaptive Cruise Control (pACC) incl. Traffic Jam Assist - Lane Change and Parking Assist - Proactive Occupant Protection - Traveller Assistance System incl. Emergency Assist (Traffic Sign Recognition, Adaptive Lane Keeping Assist))
- Package: Basic climate control (Heated front seats - Heated windscreen washer nozzles - Climatronic air conditioning (3-zone), fully automatic, separately adjustable for driver, front passenger and rear passengers, including odor and particle filter)
- Package: Seating Comfort PLUS (electrically adjustable front seats with memory function - electrically adjustable lumbar support in the front seats - massage function for driver's seat)
- Package: Transport (Net program in the trunk incl. charging cable bag - Variable loading floor in the trunk - Remote release of the rear seat backrests in the trunk - Cargo elements in the trunk)
- Swiveling trailer hitch
- Paint finish: Metallic
- Package: Convenience PLUS (KESSY (Keyless Entry and Start-Stop System) - Phonebox with inductive charging function (connection via the external antenna) - Sunset including acoustic side glazing at the front - Extended acoustic measures - Driver fatigue detection - Electric tailgate operation including comfort opening - Removable glasses compartment)
- Package: Family PLUS (Sun protection roller blind for rear side windows - 230V socket and 2 x USB-C charging ports in the rear - Storage box for rear seat row - Folding tables on the front seat backrests - Sleeping package (Sleeping headrests for the outer rear seats and blanket))
- Package: Infotainment BASIC (Navigation system - Infotainment Online 3 years (Online map updates for navigation; display of weather data, news, headlines; charging station and parking space search))
- Package: Light & Sight BASIC (LED matrix headlights incl. AFS and dynamic high beam assist; in rain and bad weather conditions, the cornering and curve lights illuminate the area directly in front of the car better - headlight cleaning system - full LED taillights with animated turn signals)
- Wheels: 21" alloy wheels Betria anthracite-gloss turned (front: 8.5Jx21 tires 235/45 R21 101T, Seal rear: 9Jx21 tires 255/40 R21 102T)
- heat pump

Brief expert findings

Documents submitted	At the time of the inspection, the vehicle registration certificate Part 2 (title) was available, but the vehicle registration certificate Part 1 (document) was not. (Copy)
VIN comparison	The vehicle identification number (VIN) was read from the vehicle and its conformity with the submitted documents was confirmed by the undersigned during the inspection.
Inspection	The inspection conditions were sufficient for the assessment of the vehicle. No lifting equipment or pit was available for inspecting the vehicle. Therefore, inspection of the vehicle's underside was only possible to a limited extent.
Test drive	No test drive/shunting maneuver was carried out during the inspection of the vehicle.
Engine function test	An engine test run was performed.



Value reducing factors

No.	Component group	Description
1	Cab	Insulation lining - Damage caused by marten / rodent - Replace
2	Door - front left side	Door edge - Scratch(es) - Smart repair
3	Door - front left side	Door - Dent / paintcoat damage - Smart repair
4	Wheel / tyres	Alloy rim - rear right side - Scratched - Loss in value
5	Wheel / tyres	Alloy rim - rear left side - Scratched - Loss in value
6	Wheel / tyres	Alloy rim - front right side - Scratched - Loss in value
7	Wheel / tyres	Alloy rim - front left side - Scratched - Replace
8	Fuel system	Tank flap (Betätigung + Halterung) - Non-operational - Replace
9	Misc.	Inspection / maintenance - Due - Replace
10	Front bumper	Front bumper (+ Spoiler erneuern) - Deformed - Paint

Missing parts

Description

Equipment - Tirefit complete

Previous damages

No.	Previous damage	Extent of damage (Net)
1	Rear, Provided by user / customer, from 26 Aug 2025	1.055,88 €

Order/Scope of Order

An order was placed to prepare a sales report for the described vehicle. This report includes the following:

- Description of key vehicle information
- Documentation of equipment features
(Delivery by third-party service providers)
- Documentation of damage, defects, missing parts
- Documentation of prior damage, unrepaired prior damage, repainting
- A brief visual or functional inspection of the equipment details, if possible.
(Functional testing of driver assistance systems is not included in the scope of services!)
- a photographic documentation of the vehicle



Basis for the order

This product is based on the guidelines for vehicle returns and valuations published by Alphabet Fleet GmbH. The expert makes the specific findings in each individual case objectively, within the framework of the prescribed standards, based on their own expertise.

The vehicle inspection takes place in a fully assembled, unassembled state.

Damage or defects that can only be detected during disassembly/diagnostic work or through further investigation remain within the realm of prognostic risk. An increased risk exists due to concealed defects caused by fraudulent misrepresentation and which were not identifiable by the expert.

Damage or defects resulting from normal use or wear and tear of the vehicle will be accepted in accordance with the applicable standard.

There was no explicit identification or monetary consideration of the expected features within the product.

Features which, in their nature and extent, slightly exceed normal use but do not constitute unacceptable damage, will be documented and indicated as signs of wear, if applicable.

Damage or defects that, according to the applicable standard, can no longer be attributed to normal use or wear and tear are listed under "Value Reducing Factors" in the product description.

Depending on the product specification, a monetary ID can be provided. If this takes place, the costs can be 100% d or pro rata depending on the vehicle's age and mileage.

Previous damages

According to available information previous damages were repaired at the vehicle. Traces of repairs, which allow conclusions about the area of repair, were not recognizable during the inspection.

Comments

Die zusätzlichen Winterräder sind kein Bestandteil der Ausstattung.

Die kW wurden aus der Fahrzeugrechnung übernommen, da in ZB2 nicht vorhanden.



Figure 1: Diagonal front (left)



Figure 2: Diagonal front (right)



Figure 3: Diagonal rear (left)



Figure 4: Diagonal rear (right)



Figure 5: Interior - front



Figure 6: Interior - rear



Figure 7: Instrument cluster



Figure 8: Instrument panel



Figure 9: Interior 360° view

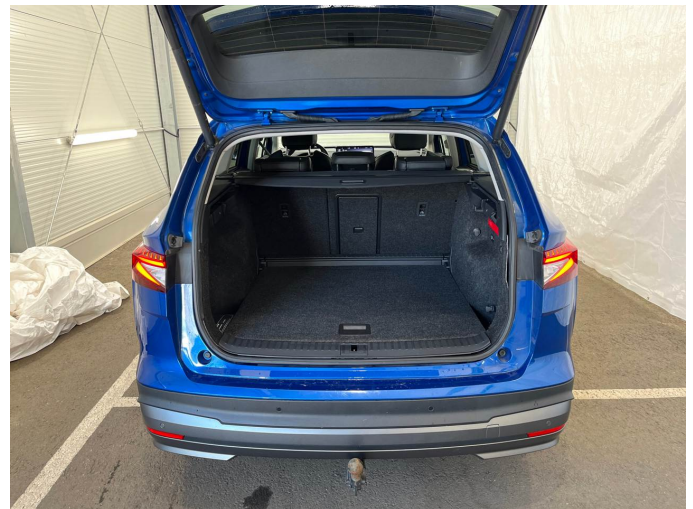


Figure 10: Cargo area

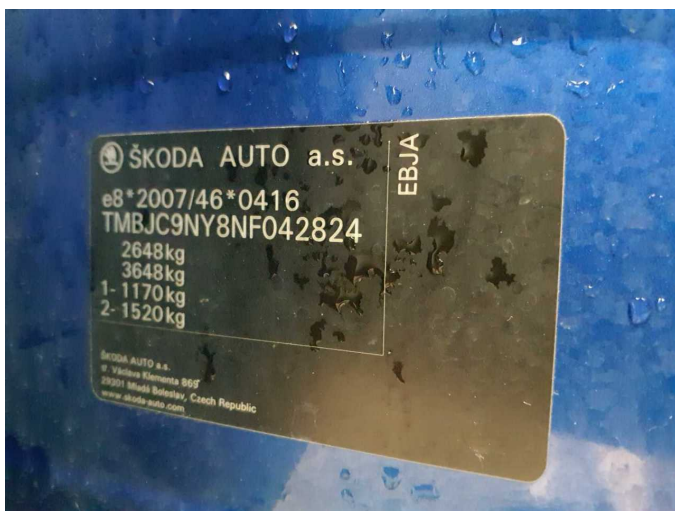


Figure 11: VIN



Figure 12: Mounted tyres

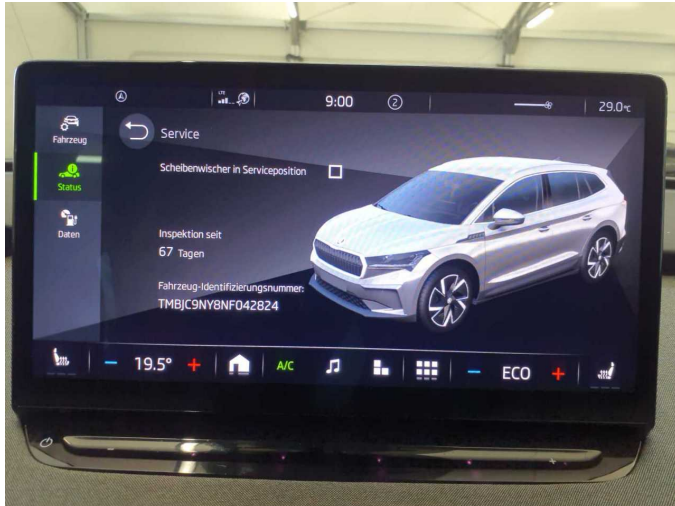


Figure 13: Documents



Figure 14: Documents



Figure 15: Documents



Figure 16: Additional tyres



Figure 17: Navigation



Figure 18: Misc.



Figure 19: Misc.



Figure 20: Misc.



Figure 21: Misc.



Figure 22: Misc.

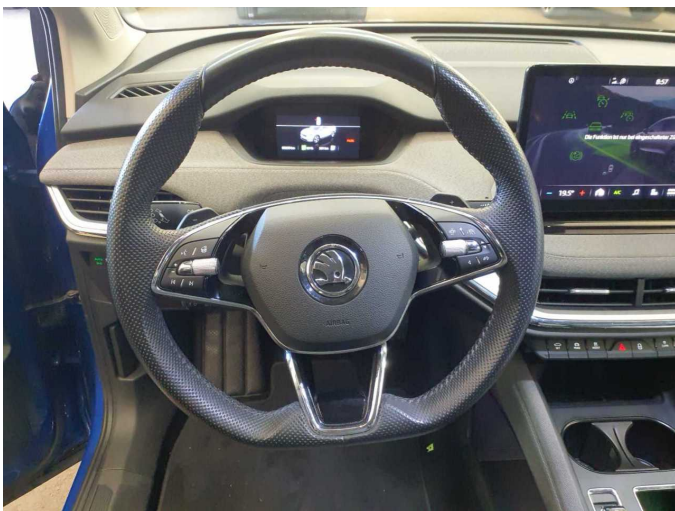


Figure 23: Misc.



Figure 24: Misc.



Figure 25: Misc.



Figure 26: Misc.

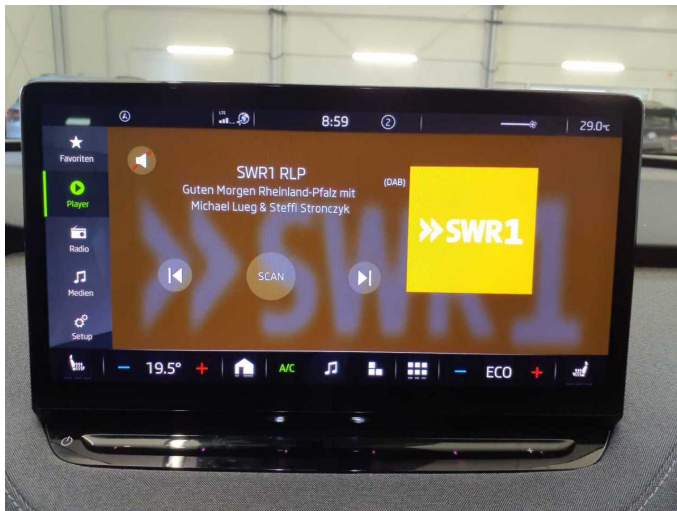


Figure 27: Misc.



Figure 28: Misc.

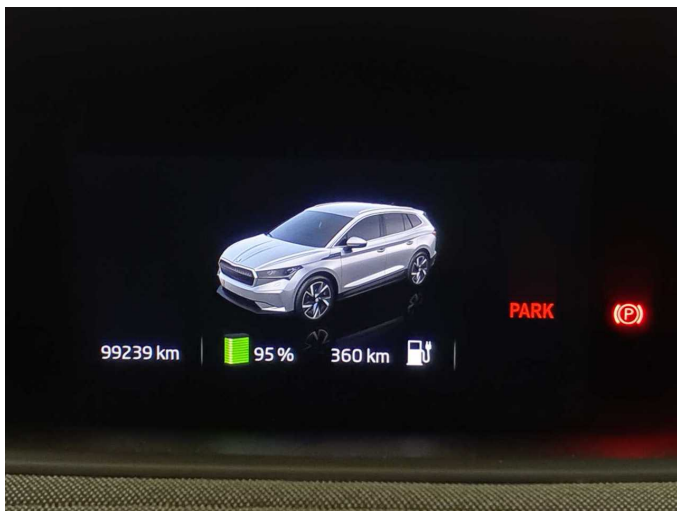


Figure 29: Misc.

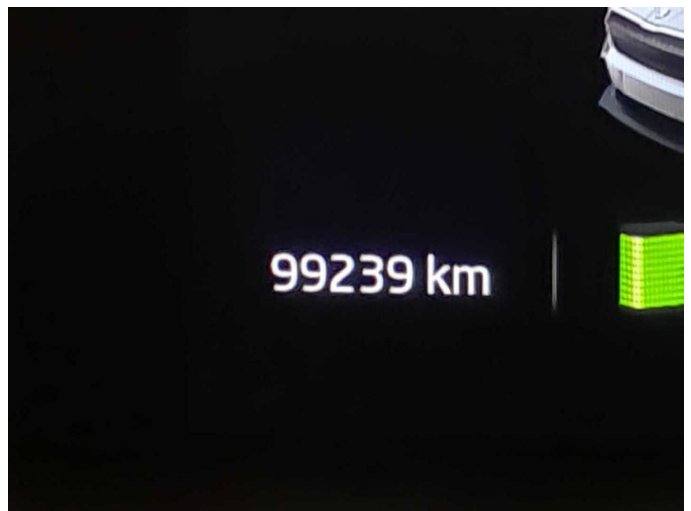


Figure 30: Misc.



Figure 31: Misc.



Figure 32: Misc.



Figure 33: Misc.



Figure 34: Misc.



Figure 35: Misc.



Figure 36: Misc.



Damage 1: Cab: Insulation lining - Damage caused by marten / rodent - Replace



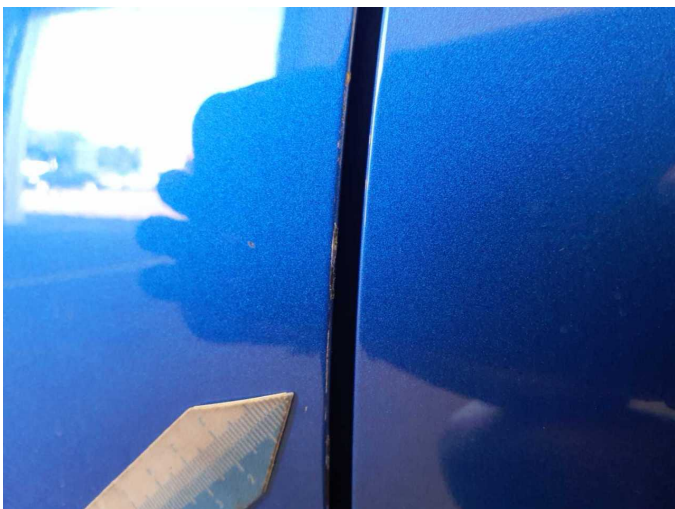
Damage 1: Cab: Insulation lining - Damage caused by marten / rodent - Replace



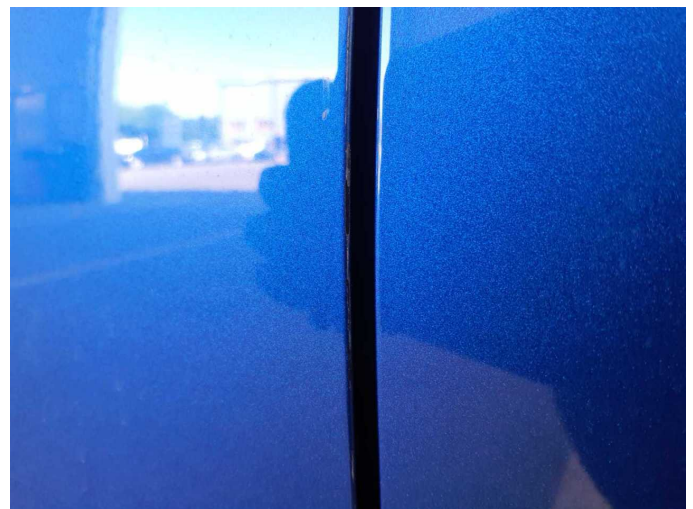
Damage 2: Door - front left side: Door edge - Scratch(es) - Smart repair



Damage 2: Door - front left side: Door edge - Scratch(es) - Smart repair



Damage 2: Door - front left side: Door edge - Scratch(es) - Smart repair



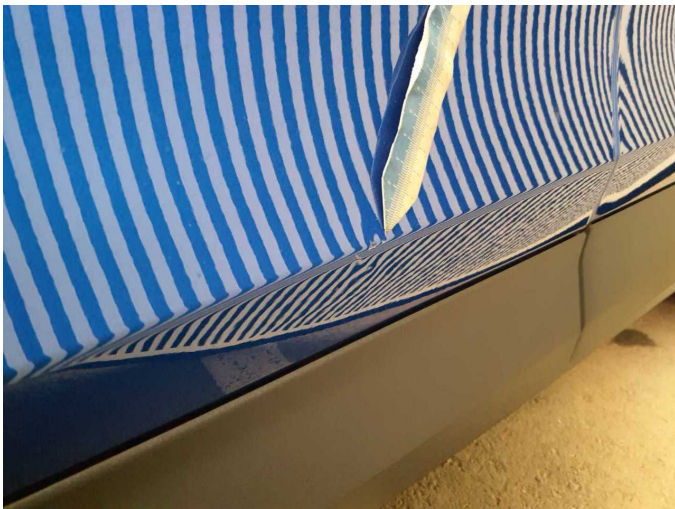
Damage 2: Door - front left side: Door edge - Scratch(es) - Smart repair



Damage 2: Door - front left side: Door edge - Scratch(es) - Smart repair



Damage 3: Door - front left side: Door - Dent / paintcoat damage - Smart repair



Damage 3: Door - front left side: Door - Dent / paintcoat damage - Smart repair



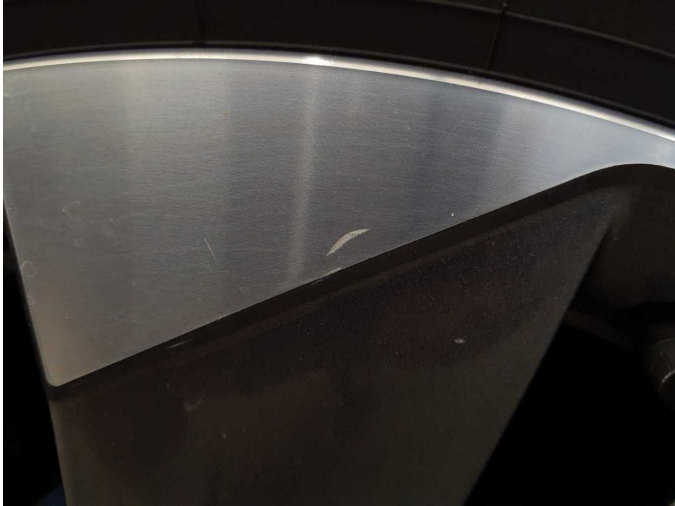
Damage 3: Door - front left side: Door - Dent / paintcoat damage - Smart repair



Damage 4: Wheel / tyres: Alloy rim - rear right side - Scratched - Loss in value



Damage 4: Wheel / tyres: Alloy rim - rear right side - Scratched - Loss in value



Damage 4: Wheel / tyres: Alloy rim - rear right side - Scratched - Loss in value



Damage 4: Wheel / tyres: Alloy rim - rear right side - Scratched - Loss in value



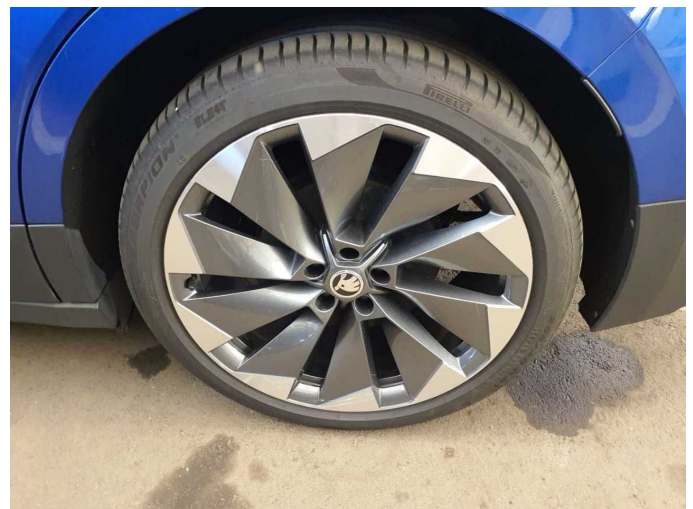
Damage 4: Wheel / tyres: Alloy rim - rear right side - Scratched - Loss in value



Damage 4: Wheel / tyres: Alloy rim - rear right side - Scratched - Loss in value



Damage 4: Wheel / tyres: Alloy rim - rear right side - Scratched - Loss in value



Damage 5: Wheel / tyres: Alloy rim - rear left side - Scratched - Loss in value



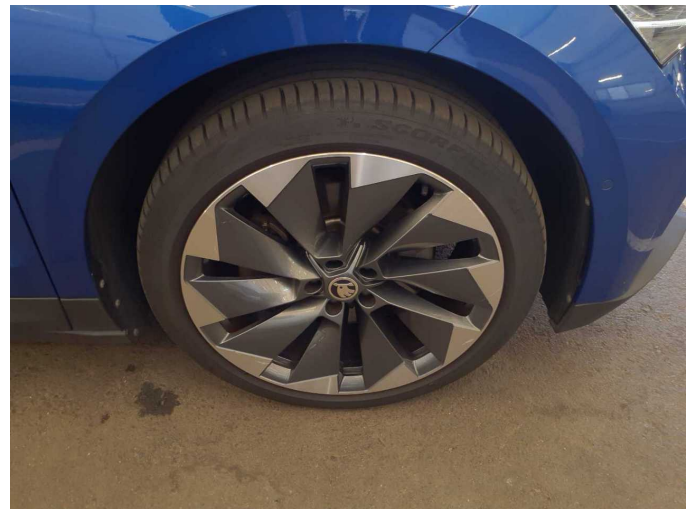
Damage 5: Wheel / tyres: Alloy rim - rear left side - Scratched - Loss in value



Damage 5: Wheel / tyres: Alloy rim - rear left side - Scratched - Loss in value



Damage 5: Wheel / tyres: Alloy rim - rear left side - Scratched - Loss in value



Damage 6: Wheel / tyres: Alloy rim - front right side - Scratched - Loss in value



Damage 6: Wheel / tyres: Alloy rim - front right side - Scratched - Loss in value



Damage 6: Wheel / tyres: Alloy rim - front right side - Scratched - Loss in value



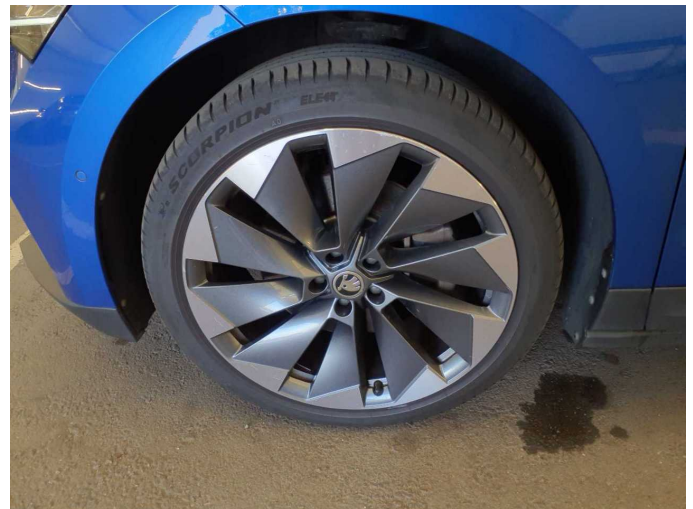
Damage 6: Wheel / tyres: Alloy rim - front right side - Scratched - Loss in value



Damage 6: Wheel / tyres: Alloy rim - front right side - Scratched - Loss in value



Damage 6: Wheel / tyres: Alloy rim - front right side - Scratched - Loss in value



Damage 7: Wheel / tyres: Alloy rim - front left side - Scratched - Replace



Damage 7: Wheel / tyres: Alloy rim - front left side - Scratched - Replace



Damage 7: Wheel / tyres: Alloy rim - front left side - Scratched - Replace



Damage 7: Wheel / tyres: Alloy rim - front left side - Scratched - Replace



Damage 7: Wheel / tyres: Alloy rim - front left side - Scratched - Replace



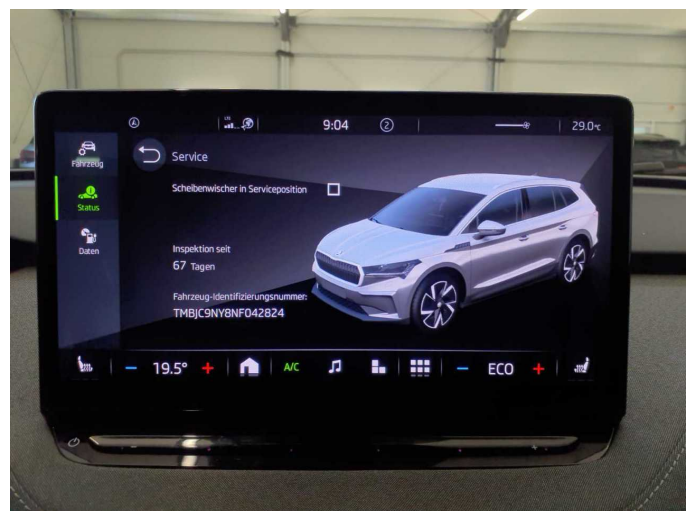
Damage 8: Fuel system: Tank flap (Betätigung + Halterung) - Non-operational - Replace



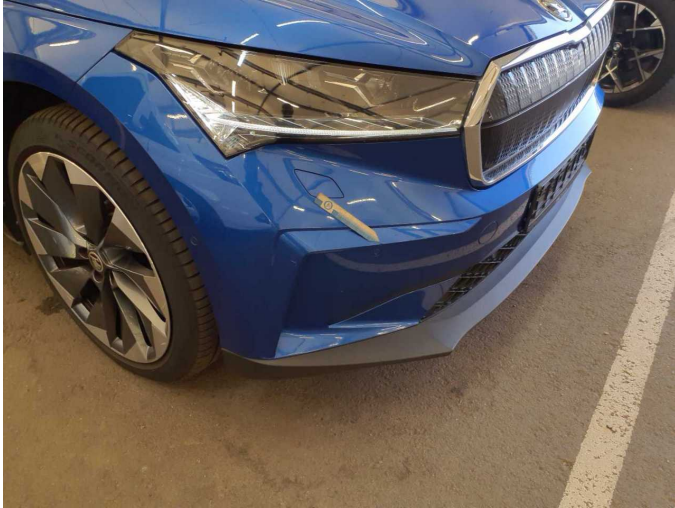
Damage 8: Fuel system: Tank flap (Betätigung + Halterung) - Non-operational - Replace



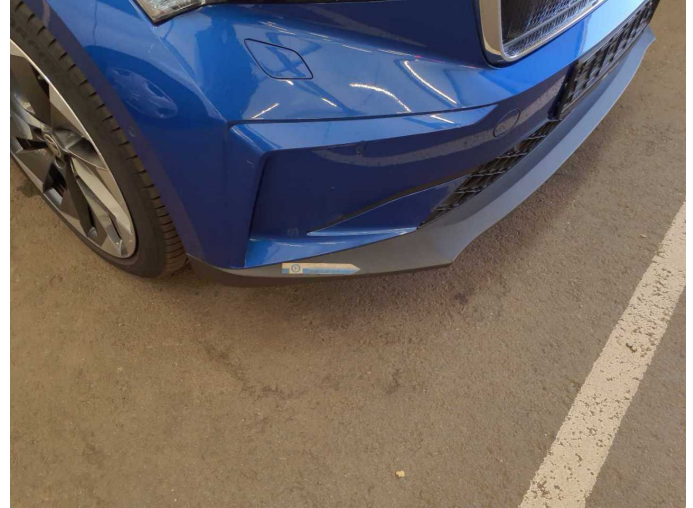
Damage 8: Fuel system: Tank flap (Betätigung + Halterung) - Non-operational - Replace



Damage 9: Misc.: Inspection / maintenance - Due - Replace



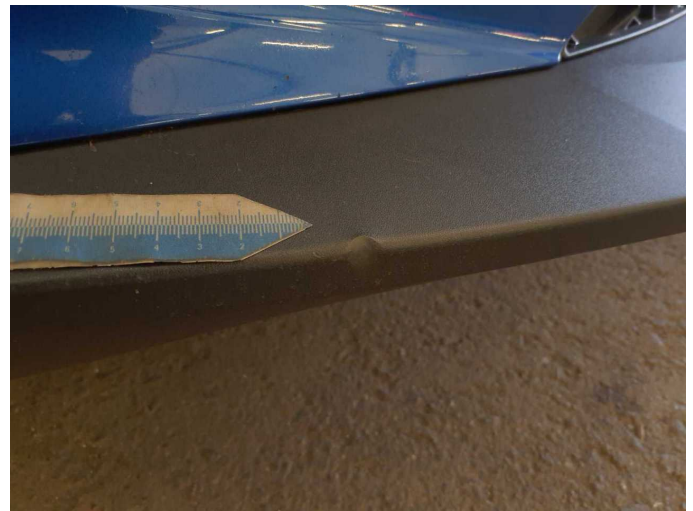
Damage 10: Front bumper: Front bumper (+ Spoiler erneuern) - Deformed - Paint



Damage 10: Front bumper: Front bumper (+ Spoiler erneuern) - Deformed - Paint



Damage 10: Front bumper: Front bumper (+ Spoiler erneuern) - Deformed - Paint



Damage 10: Front bumper: Front bumper (+ Spoiler erneuern) - Deformed - Paint



Damage 10: Front bumper: Front bumper (+ Spoiler erneuern) - Deformed - Paint



Missing part 1: Equipment: Tirefit complete - Missing - Replace



Wartungshistorie

(gemäß Auftraggeber Informationen)

Fahrgestellnummer: TMBJC9NY8NF042824

Hersteller / Modell: SKODA SKODA Enyaq iV 80

Datum	KM-Stand	Beschreibung
16.04.2025	69.046	Wartung Sonstiges
22.04.2024	44.759	Bremsflüssigkeit; Bremsflüssigkeit ern; Regelwartungsdienst; Wartung Sonstiges