

## Expertise

Protocol number: 46237931  
 Order No. / Reference: 26598352  
 Inspection date: 26 Jun 2026

Manufacturer: Volkswagen

Model: Touran 2.0 TDI SCR DSG Comfortline

VIN: WVGZZZ1TZW016787



### Vehicle details

#### Manufacturer / Type / Model / Equipment

Volkswagen Touran 2.0 TDI SCR DSG Comfortline

**Vehicle Identification number** WVGZZZ1TZW016787

**Mileage (Read)** 74,141 km

**First registration** 13 Jan 2021

**Number of holders** 1

**Next periodical technical inspection** 02/2028

(Report on hand)

**Power / Engine displacement** 110 kw / 1,968 ccm

**Fuel type / Cylinder** Diesel / 4

**Gearbox / Number of gears** Automatic / 7

**Type of drive** Front drive

**Type of vehicle** Van

**Colour / colour code** Reflexsilber-metallic (A7W)

**Doors / Seats** 5 / 5

**Upholstery type** Cloth

**Colour of upholstery** Black-Anthracite

**Vehicle with smoke odor** no

**readiness to drive** Roadworthy



## Vehicle details

|  |                                     |                                |  |
|--|-------------------------------------|--------------------------------|--|
| <b>Maintenance booklet / proof</b>               | digital proof / complete            | <b>Next maintenance in</b>     | 118 Tag(e)   |
| <b>Last service on / at</b>                      | 05/2026 at 73,489 km                |                                |  |
| <b>Key is / should be</b>                        | 2 / 2                               | <b>FZG documents</b>           | ZB#2 (B) was available (copy), ZB#1 (S) was not available. |
|  |                                     | <b>Letter No.</b>              | FX433456   |
| <b>Previous damage / Accident</b>                | None detectable                     | <b>Repainting</b>              | None detectable  |
| <b>Inspection conditions</b>                     | sufficient                          | <b>Lifting equipment / pit</b> | yes  |
| <b>Test drive</b>                                | short drive on the company premises | <b>Engine function test</b>    | Performed  |
| <b>readiness to drive</b>                        | Roadworthy                          |                                |  |
| <b>Manufacturer key number/ type code number</b> | 0603 / BWR 00273                    |                                |  |
| <b>Emission standard</b>                         | EURO6;WLTP;AP;PI/CI; M, N1 I        | <b>fine dust sticker</b>       |  |
| <b>Permitted total weight</b>                    | 2,230 kg                            | <b>Empty weight</b>            |  |

## Tyres

### Mounted tyres

| #  | Tyre size      | Type of tyre                | Manufacturer | Tread depth |
|----|----------------|-----------------------------|--------------|-------------|
| 1) | 205/60 R16 96V | Summer tyres on Light alloy | Falken       | 6mm / 6mm   |
| 2) | 205/60 R16 96V | Summer tyres on Light alloy | Falken       | 7mm / 7mm   |

### Additional tyres

| #  | Tyre size      | Type of tyre                | Manufacturer | Tread depth |
|----|----------------|-----------------------------|--------------|-------------|
| 1) | 205/60 R16 96H | Winter tyres on Light alloy | Michelin     | 5mm / 5mm   |
| 2) | 205/60 R16 96H | Winter tyres on Light alloy | Michelin     | 6mm / 6mm   |

### Replacement

| Typ     | Tyre size | Type of tyre            | Manufacturer | Tread depth |
|---------|-----------|-------------------------|--------------|-------------|
| Tirefit |           | Expiration date 10/2024 |              |             |

**Legend:** Tread depth information for the left tire is listed first, for the right tire it is listed second on the axle in the direction of travel.



## Equipment

### Standard equipment

- Storage compartment with lid on the instrument panel
- Airbag for driver and front passenger
- Electrically adjustable and heated exterior mirrors
- third brake light
- black roof rails
- Decorative inlays "Piano Black"
- Parking assistance
- Electronic Stability Program (ESP) with counter-steering support
- luggage compartment cover
- Height-adjustable luggage compartment floor
- Transmission: 7-speed DSG
- Rear window heated
- Interior lights with delayed shut-off and dimming function, 2 reading lights front and rear
- Air conditioning
- Headrests (3) in the 2nd row of seats
- Front headrests
- Steering wheel: Leather
- Illuminated makeup mirrors in the sun visors
- Multifunction display "Plus"
- Non-smoking version
- Emergency call service
- Proactive occupant protection system in conjunction with "Front Assist"
- Tire pressure monitoring system (passive)
- Wheels: Tire Mobility Set
- Drawers under the front seats
- Seat belts: 3 three-point automatic seat belts in the rear
- Seats: 3 individual seats in the 2nd row
- Seats: Front passenger seat backrest folds down completely
- Seats: Lumbar support in the front
- Start-stop system
- Bumpers in body color
- Textile floor mats
- Warning tone and light for unfastened seat belts front and rear
- Central locking without safe locking, with remote control and 2 remote folding keys
- Storage compartments in the overhead console
- Airbag, head airbag system for front and rear passengers
- Exterior mirror housings and door handles in body color
- Headliner in Storm Grey
- Decorative inlays "New Brushed Design"
- Diesel particulate filter
- Electronic parking brake including auto-hold function
- Windscreen in heat-insulating glass
- Baggage management package
- Additional luggage compartment lighting
- Speed limiter
- Glove compartment with cooling option
- Rear window wiper with intermittent function
- ISOFIX mounting points on rear seats
- LED license plate lighting
- Instrument cluster with electronic speedometer, odometer and trip odometer, tachometer
- Black radiator grille with chrome strips on the slats
- Headlight range control
- front center armrest
- Fatigue detection
- Emergency braking assistant "Front Assist"
- Upholstery: Cloth
- Radio "Composition"
- Radio accessories: 8 speakers
- Wheels: Light alloy (4) "Karlstad" 6.5 J x 16
- Gearshift knob in leather
- electromechanical power steering
- Seat belts: Three-point automatic seat belts at the front with height adjustment and belt tensioner
- Seats: Folding tables on the backs of the front seats
- Seats: Comfort seats in the front
- Seats: Front seats are height-adjustable
- 12V power outlet on the rear of the center console
- Daytime running light
- First aid kit, warning triangle and high-visibility vest
- Electronic immobilizer
- Green thermal insulation glazing
- Black trim strips on the side windows



## Extra equipment

- Adaptive Cruise Control ACC "stop & go" up to 210 km/h and Emergency Brake Assist "Front Assist" (Adaptive Cruise Control ACC "stop & go", with speed limiter - Emergency Brake Assist "Front Assist" (for Adaptive Cruise Control ACC up to 210 km/h))
- Steering wheel: Multifunction steering wheel in leather, with paddle shifters (with control options for multifunction display, radio and telephone)
- Package: Ambient lighting (ambient lighting, light strips on the front door trim, illuminated door handles and front door armrests - "Piano Black" decorative inlays for instrument panel and front door trim - interior lights with delayed shut-off and dimming function, 2 LED reading lights front and rear - LED light in the front footwell)
- Package: Family (foldable and removable reversible luggage compartment mat - electric child safety lock for rear doors, operable from the driver's seat - sunshade roller blind on the rear door windows)
- Package: R-Line "Exterior" (Silver anodized roof rails - Black radiator grille with chrome strip on lower louvre, with "R-Line" logo - With individual installation - Bumpers and side skirts in "R" styling, front louvres and rear trim strip in chrome)
- Package: Mirror package (electrically folding exterior mirrors, auto-dimming on the driver's side, ambient lighting and passenger-side exterior mirror lowering - automatic headlight control with daytime running lights, "Leaving home" function and manual "Coming home" function - automatically dimming interior mirror - rain sensor)
- Seats: Front seats and outer rear seats of the 2nd row are heated.
- Anti-theft alarm system (with interior monitoring, backup horn and tow-away protection)
- Heated windshield (laminated safety glass windshield, noise-reducing and heated)
- Paint finish: Metallic in combination with R-Line "Exterior" package
- Navigation system "Discover Media" incl. "Streaming & Internet" (screen diagonal 20.3 cm - touchscreen - FM radio reception - dual tuner with phase diversity - MP3 playback - SD card slot - USB-C with Apple compatibility - output power 4x20 watts - map with 2D display - traffic sign display - telephone interface - 3-way sound control - DAB+ digital radio reception)
- Package: Business Premium (Air Care Climatronic, allergen filter - ACC stop & go, speed limiter, Front Assist - lumbar support front, driver's side electrically adjustable with massage function - multifunction leather steering wheel, paddle shifters - cargo net partition - heated windshield washer nozzles - headlight cleaning system - drawer under right front seat - microfleece seat center panels - top comfort seats front, heated - emergency braking assistant "Front Assist" - height-adjustable front seats, ergoActive seat on the driver's seat - washer fluid warning light.)
- Package: "Easy Open" incl. Safe locking (luggage compartment lid with sensor-controlled opening and electric closing - keyless locking and starting system "Keyless Access")
- Rear side windows and rear window tinted, absorbing 65 percent of the light
- "Comfort" telephone interface with inductive charging function (hands-free system)

## Brief expert findings

|                      |  |
|----------------------|--|
| Documents submitted  | At the time of the inspection, the vehicle registration certificate Part 2 (title) was available, but the vehicle registration certificate Part 1 (document) was not. (Copy) |
| VIN comparison       | The vehicle identification number (VIN) was read from the vehicle and its conformity with the submitted documents was confirmed by the undersigned during the inspection.    |
| Inspection           | The inspection conditions were sufficient for the assessment of the vehicle.<br>Lifting equipment and/or a pit were available for examining the vehicle.                     |
| Test drive           | A short maneuvering and shunting exercise was carried out on the company premises.   |
| Engine function test | An engine test run was performed.  |
| readiness to drive   | The vehicle was roadworthy at the time of inspection.  |



## Value reducing factors

| No. | Component group | Description  |
|-----|-----------------|--|
| 1   | Equipment       | Vehicle key with remote control (Batterie) - Due - Replace     |
| 2   | Equipment       | Tirefit filler - Expired - Replace                             |
| 3   | Bonnet          | Insulation lining - Damage caused by marten / rodent - Replace |
| 4   | Wheel / tyres   | Alloy rim - rear right side - Scratch(es) - Loss in value      |
| 5   | Wheel / tyres   | Alloy rim - front right side - Scratched - Loss in value       |
| 6   | Front bumper    | Spoiler - Scratched - Replace                                  |
| 7   | Rear bumper     | Rear bumper - Scratched - Paint                                |
| 8   | Bonnet          | Bonnet - Dent / paintcoat damage - Paint                       |

## Wear and tear

| No. | Component group             | Description  |
|-----|-----------------------------|--|
| 1   | Wheel / tyres               | Alloy rim - front left side - Scratch(es) - No deduction |
| 2   | Side panel - rear left side | Sill - Scratch(es) - No deduction                        |
| 3   | Side panel - rear left side | Sill - dent(s) - No deduction                            |
| 4   | Front bumper                | Front bumper - Scratch(es) - No deduction                |

The vehicle shows signs of wear and tear commensurate with its age and use.

## Order/Scope of Order

An order was placed to prepare a sales report for the described vehicle. This report includes the following:

- Description of key vehicle information
- Documentation of equipment features  
(*Delivery by third-party service providers*)
- Documentation of damage, defects, missing parts
- Documentation of prior damage, unrepaired prior damage, repainting
- A brief visual or functional inspection of the equipment details, if possible.  
(*Functional testing of driver assistance systems is not included in the scope of services!*)
- a photographic documentation of the vehicle

## Basis for the order

This product is based on the guidelines for vehicle returns and valuations published by Alphabet Fleet GmbH. The expert makes the specific findings in each individual case objectively, within the framework of the prescribed standards, based on their own expertise.

The vehicle inspection takes place in a fully assembled, unassembled state.

Damage or defects that can only be detected during disassembly/diagnostic work or through further investigation remain within the realm of prognostic risk. An increased risk exists due to concealed defects caused by fraudulent misrepresentation and which were not identifiable by the expert.

Damage or defects resulting from normal use or wear and tear of the vehicle will be accepted in accordance with the applicable standard.

There was no explicit identification or monetary consideration of the expected features within the product.

Features which, in their nature and extent, slightly exceed normal use but do not constitute unacceptable damage, will be documented and indicated as signs of wear, if applicable.

Damage or defects that, according to the applicable standard, can no longer be attributed to normal use or wear and tear are listed under "Value Reducing Factors" in the product description.

Depending on the product specification, a monetary ID can be provided. If this takes place, the costs can be 100% d or pro rata depending on the vehicle's age and mileage.



## Previous damages

No apparent prior damage that had been repaired could be found on the vehicle.

## Comments

Die zusätzlichen Winterräder sind kein Bestandteil der Ausstattung.



Figure 1: Diagonal front (left)



Figure 2: Diagonal front (right)



Figure 3: Diagonal rear (left)



Figure 4: Diagonal rear (right)



Figure 5: Interior - front



Figure 6: Interior - rear



Figure 7: Instrument cluster



Figure 8: Instrument panel



Figure 9: Interior 360° view



Figure 10: Cargo area



Figure 11: VIN



Figure 12: Mounted tyres

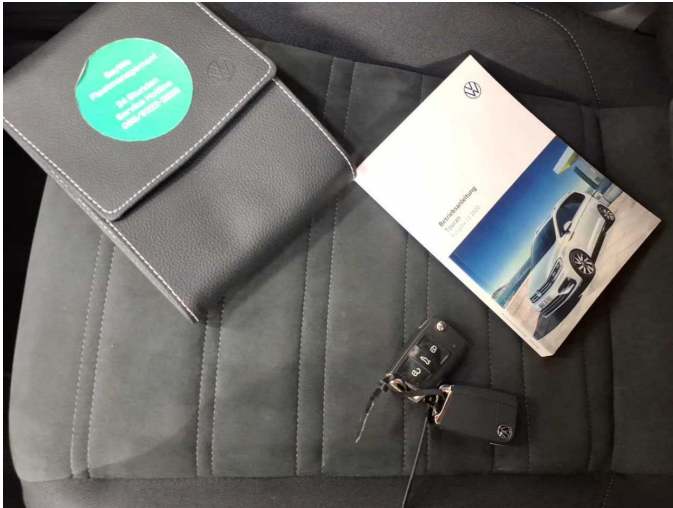


Figure 13: Documents

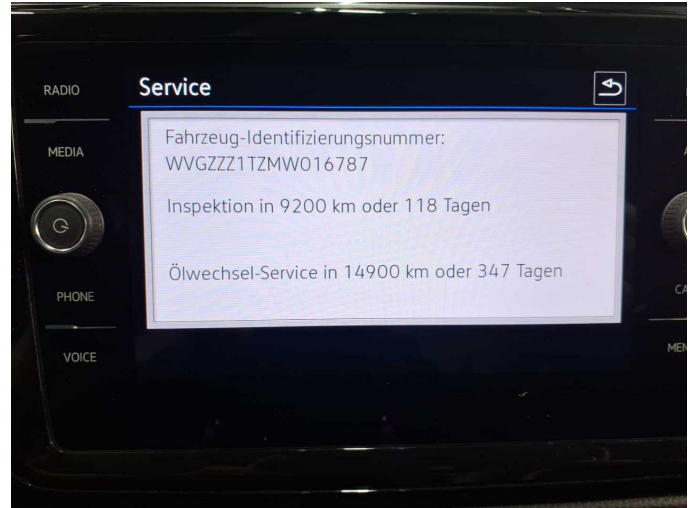


Figure 14: Documents



Figure 15: Documents



Figure 16: Additional tyres



Figure 17: Navigation



Figure 18: Misc.



Figure 19: Misc.



Figure 20: Misc.



Figure 21: Misc.



Figure 22: Misc.



Figure 23: Misc.



Figure 24: Misc.



Figure 25: Misc.

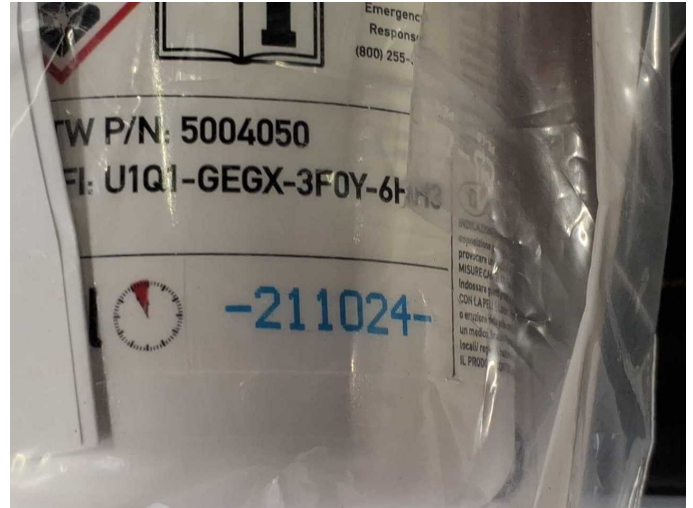


Figure 26: Misc.



Figure 27: Misc.



Figure 28: Misc.



Figure 29: Misc.



Figure 30: Misc.



Figure 31: Misc.



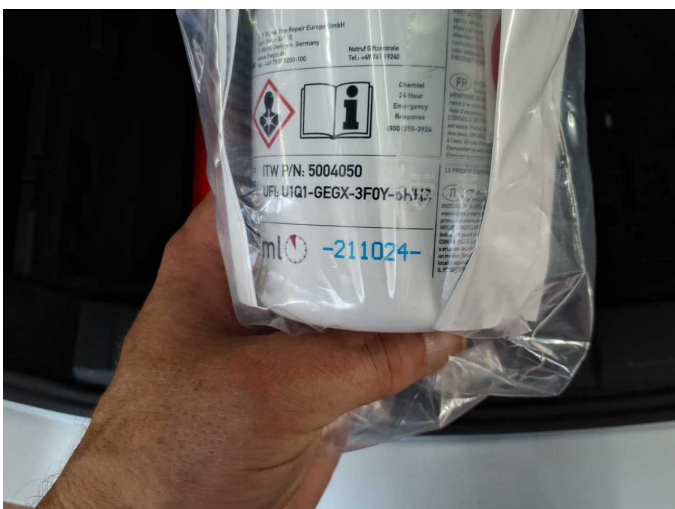
Figure 32: Misc.



Figure 33: Misc.



Damage 1: Equipment: Vehicle key with remote control (Batterie) - Due - Replace



Damage 2: Equipment: Tirefit filler - Expired - Replace



Damage 3: Bonnet: Insulation lining - Damage caused by marten / rodent - Replace



**Damage 3:** Bonnet: Insulation lining - Damage caused by marten / rodent - Replace



**Damage 4:** Wheel / tyres: Alloy rim - rear right side - Scratch(es) - Loss in value



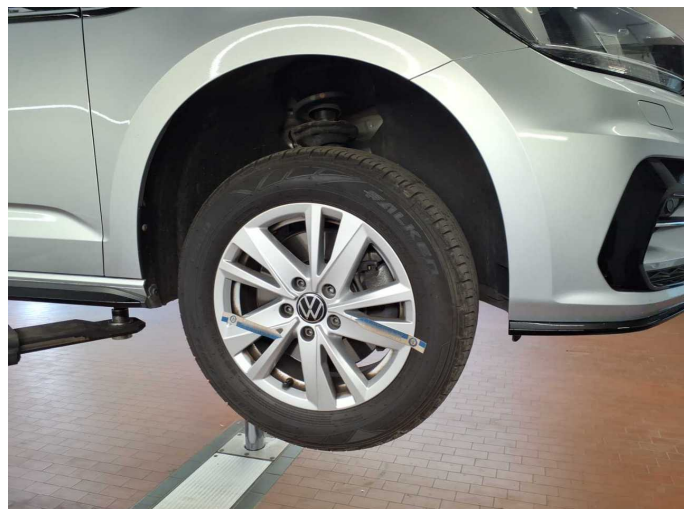
**Damage 4:** Wheel / tyres: Alloy rim - rear right side - Scratch(es) - Loss in value



**Damage 4:** Wheel / tyres: Alloy rim - rear right side - Scratch(es) - Loss in value



**Damage 4:** Wheel / tyres: Alloy rim - rear right side - Scratch(es) - Loss in value



**Damage 5:** Wheel / tyres: Alloy rim - front right side - Scratched - Loss in value



**Damage 5:** Wheel / tyres: Alloy rim - front right side - Scratched - Loss in value



**Damage 5:** Wheel / tyres: Alloy rim - front right side - Scratched - Loss in value



**Damage 6:** Front bumper: Spoiler - Scratched - Replace



**Damage 6:** Front bumper: Spoiler - Scratched - Replace



**Damage 6:** Front bumper: Spoiler - Scratched - Replace



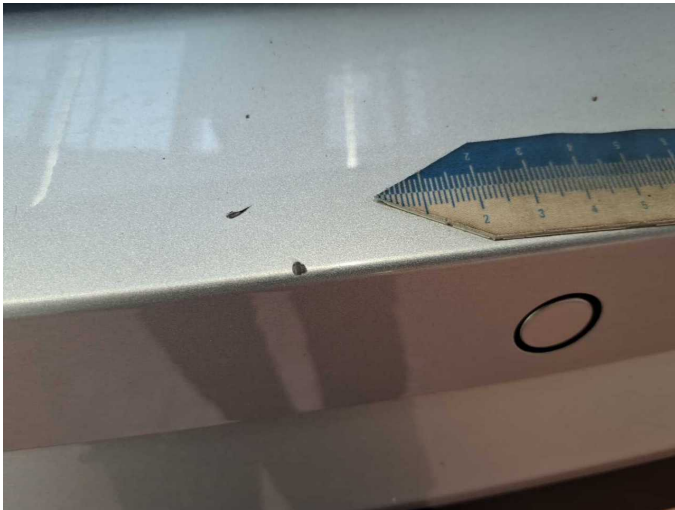
**Damage 7:** Rear bumper: Rear bumper - Scratched - Paint



**Damage 7:** Rear bumper: Rear bumper - Scratched - Paint



**Damage 7:** Rear bumper: Rear bumper - Scratched - Paint



**Damage 7:** Rear bumper: Rear bumper - Scratched - Paint



**Damage 7:** Rear bumper: Rear bumper - Scratched - Paint



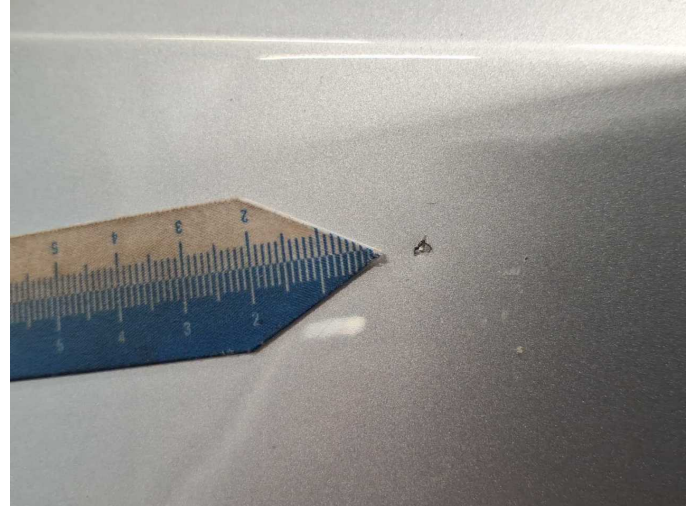
**Damage 7:** Rear bumper: Rear bumper - Scratched - Paint



**Damage 8:** Bonnet: Bonnet - Dent / paintcoat damage - Paint



**Damage 8:** Bonnet: Bonnet - Dent / paintcoat damage - Paint



**Damage 8:** Bonnet: Bonnet - Dent / paintcoat damage - Paint



**Wear and tear 1:** Wheel / tyres: Alloy rim - front left side - Scratch(es) - No deduction



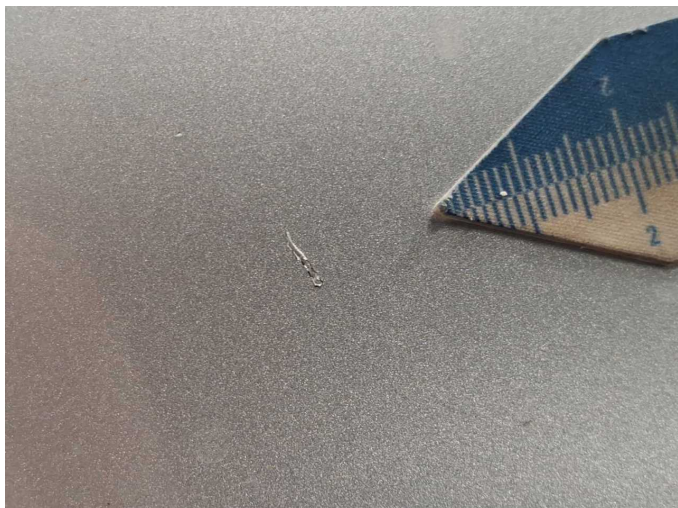
**Wear and tear 1:** Wheel / tyres: Alloy rim - front left side - Scratch(es) - No deduction



**Wear and tear 1:** Wheel / tyres: Alloy rim - front left side - Scratch(es) - No deduction



**Wear and tear 4:** Front bumper: Front bumper - Scratch(es) - No deduction



**Wear and tear 4:** Front bumper: Front bumper - Scratch(es) - No deduction



# Wartungshistorie

(gemäß Auftraggeber Informationen)

Fahrgestellnummer: WVGZZZ1TZMW016787  
Hersteller / Modell: VOLKSWAGEN VOLKSWAGEN Touran 2.0 TDI SCR DSG  
Comfortline

| Datum      | KM-Stand | Beschreibung   |
|------------|----------|--|
| 26.05.2026 | 73.489   | Motoröl b. Wartung; Ölfilter ern; Ölwechsel; Wartung Sonstiges   |
| 17.03.2026 | 70.108   | Systemtest/Eigendiagnose   |
| 11.02.2026 | 69.463   | AU; Bremsflüssigkeit; Bremsflüssigkeit ern   |
| 10.12.2024 | 53.270   | AU; Bremsflüssigkeit; Bremsflüssigkeit ern; Motoröl b. Wartung; Ölfilter ern; Ölwechsel; Wartung Sonstiges |
| 22.10.2024 | 53.270   | Bremsklötze hinten; Regelwartungsdienst  |
| 09.11.2022 | 25.820   | Motoröl b. Wartung; Regelwartungsdienst  |