

Expertise

Protocol number: 46014331
Order No. / Reference: 26472432
Inspection date: 18 Jun 2026

Manufacturer: Volvo

Model: V60 T6 AWD Recharge Geartronic RDesign

VIN: YV1ZWH1VDN1489739



Vehicle details

Manufacturer / Type / Model / Equipment

Volvo V60 T6 AWD Recharge Geartronic RDesign

Vehicle Identification number	YV1ZWH1VDN1489739
Mileage (Read)	95,973 km
First registration	18 Mar 2022
Number of holders	1
Next periodical technical inspection	03/2027 (Report on hand)

Power / Engine displacement	186 kw / 1,969 ccm
Fuel type / Cylinder	Hybr.B/E ext.aufll / 4
Gearbox / Number of gears	Automatic / 8
Type of drive	All-wheel drive
Type of vehicle	Station wagon

Colour / colour code	Black Stone
Doors / Seats	5 / 5
Upholstery type	Cloth / leather combination
Colour of upholstery	Black-Anthracite

Vehicle with smoke odor	no
--------------------------------	----



Vehicle details

Maintenance booklet / proof	Available / incomplete	Next maintenance in	0 km
Last service on / at	03/2025 at 72,225 km		
Key is / should be	2 / 2	FZG documents	ZB#2 (B) was available (copy), ZB#1 (S) was not available.
		Letter No.	GF848718
Previous damage / Accident	None detectable	Repainting	Detectable
Inspection conditions	sufficient	Lifting equipment / pit	yes
Test drive	Not performed	Engine function test	Performed
Manufacturer key number/ type code number	9101 / BOH 00020		
Emission standard	EURO6;WLTP;AP;PI/CI; M, N1 I	fine dust sticker	
Permitted total weight	2,530 kg	Empty weight	

Tyres

Mounted tyres

#	Tyre size	Type of tyre	Manufacturer	Tread depth
1)	235/45 R18 98V	Winter tyres on Light alloy	Michelin	5mm / 5mm
2)	235/45 R18 98V	Winter tyres on Light alloy	Michelin	6mm / 6mm

Additional tyres

#	Tyre size	Type of tyre	Manufacturer	Tread depth
1)	235/40 R19 96W	Summer tyres on Light alloy	Michelin	6mm / 6mm
2)	235/40 R19 96W	Summer tyres on Light alloy	Michelin	6mm / 6mm

Replacement

Typ	Tyre size	Type of tyre	Manufacturer	Tread depth
	Tirefit	Expiration date 02/2026		

Legend: Tread depth information for the left tire is listed first, for the right tire it is listed second on the axle in the direction of travel.

TÜV SÜD Auto Partner GmbH
Wiesenring 2
04159 Leipzig

Inspection location
Mosolf SE & Co.KG
Faberweg 25
73230 Kirchheim unter Teck



Equipment



Standard equipment

- ABS - Anti-lock Braking System
- Front passenger airbag can be deactivated
- All-wheel drive (AWD) with Instant Traction
- Ambient lighting
- Electrically folding exterior mirrors
- Sport exterior mirrors in high-gloss black
- Attachment system for carrier bags in the luggage compartment
- LED turn signals integrated into the exterior mirrors
- third brake light
- CleanZone air quality system
- Connected Safety
- Roof edge spoiler
- Digital instrumentation with a 12.3" full-graphic display (31.2 cm diagonal, high resolution)
- Insoles: Metal Mesh
- Aluminum door sill plates with Recharge lettering at the front
- Electric windows front and rear
- Automatic emergency braking
- Sport front grille
- Speed limit (variable)
- Transmission: 8-speed Geartronic
- Heated rear window
- IDIS (Intelligent Driver Information System)
- Interior lighting
- ISOFIX anchors for the outer rear seats
- Child safety lock (manual, rear doors)
- Headrests (5)
- Paint finish: Solid
- Charging cable Schuko/Type 2 (Mode 2), 7 m length, single-phase, 10 A
- Cargo area roller blind
- Steering wheel adjustable for height and reach
- Steering wheel: Sports steering wheel
- Rear center armrest (foldable) with cup holders
- Sensus navigation system
- Emergency brake lights
- Electric parking brake
- Particulate filter: Gasoline particulate filter
- Upholstery: Part-leather/mesh-textile sports seats
- Radio: Sensus Connect infotainment system
- Radio accessories: Digital radio reception (DAB+)
- Radio accessories: Two USB-C ports on the back of the center console
- Wheels: 18" 5-twin-spoke alloy wheels, sport design, diamond cut/graphite look
- Speed-sensitive power steering
- Seat belts
- Safety steering column (adaptive)
- Seats: Driver and front passenger seats are height-adjustable (electrically)
- Acoustic Vehicle Alerting System (AVAS)
- Driver and passenger side airbags with two-stage deployment system
- Exhaust system with two chrome-plated tailpipes
- Electrically adjustable and heated exterior mirrors
- Outdoor temperature display
- Hill Start Assist (HSA)
- fog sensor
- On-board computer with vehicle control functions
- City Safety
- Colored glazing
- Anthracite headliner
- Roof rails in high-gloss black (integrated)
- Drive Mode
- Driver Alert
- Rear parking assist
- Electronic Stability Control (ESC)
- Electronic differential lock
- Window surround in high-gloss black
- Sport front and rear apron
- Luggage compartment partition net
- Cruise control
- Automatic tailgate (electric)
- rear window wiper
- Interior and exterior mirrors with automatic dimming function
- Keyless Drive (electronic access system)
- Automatic air conditioning
- Rear headrests foldable, electrically
- Charging box under the cargo floor
- Stainless steel loading sill protector in the luggage compartment
- LED headlights "Thor's Hammer"
- Steering wheel: Multifunction buttons on the steering wheel
- Illuminated makeup mirror for driver and front passenger
- Front center armrest with integrated storage compartment and cup holders
- Package: Winter Package
- Parking ticket holder
- Pedals: Sport pedals
- Radio: High Performance Sound audio system
- Radio accessories: Apple CarPlay and Android Auto
- Radio accessories: Subwoofer
- Rain sensor
- Run-off Road Protection
- Wheels: Tire pressure monitoring system (passive)
- Wheel accessories: Tire sealant
- Safety braking system with disc brakes all around (internally ventilated)
- Seats: Adjustable leg rest for driver and passenger seats
- Seats: Driver's seat electrically adjustable



- Seats: Rear seats in a 40/60 split or fully foldable with pass-through function
- Start/Stop technology
- Fuel filler neck with misfuelling protection
- Lashing eyes in the luggage compartment (foldable)
- Preparation for Trailer Stability Assist (TSA)
- WHIPS whiplash protection system

- Seats: Lumbar support (4-way electrically adjustable) for driver and front passenger seats
- Sport textile floor mats (front and rear)
- Power socket
- First aid kit and warning triangle
- Volvo On Call with WiFi hotspot
- Immobiliser
- Central locking system with two remote controls and integrated emergency keys

Extra equipment

- Towbar (semi-electric)
- Package: Light Package (Headlight cleaning system - Full LED headlights "Thor's Hammer" Active High Beam with extended high beam, dynamic cornering lights, intelligent high beam assistant with adaptive headlight range control and integrated LED daytime running lights)
- Radio: Audio system High Performance Sound Pro by Harman/Kardon (600 watts of power - 14 speakers - Fresh Air Subwoofer - Dirac Unison sound optimization)
- Wheels: 19" 5-triple-spoke sport design alloy wheels, diamond cut/graphite look (8 J x 19 with 235/40 R 19 W tires)

- Windscreen, heater
- Package: Parking Assistance Package (front and rear parking aid - reversing camera)
- Panoramic glass sliding roof with lifting function (with integrated, continuously adjustable sunshade (electric))
- Pilot Assist (Adaptive cruise control with distance warning - Lane keeping assist up to 130 km/h - Curve Speed Assist (CSA) - Adjustment of vehicle speed before curves based on map data)
- Side and rear windows tinted (from the B-pillar back)
- Rear seat heating (outer rear seats)

Retrofitted equipment

- 18" winter complete wheels

Brief expert findings

Documents submitted	At the time of the inspection, the vehicle registration certificate Part 2 (title) was available, but the vehicle registration certificate Part 1 (document) was not. (Copy)
VIN comparison	The vehicle identification number (VIN) was read from the vehicle and its conformity with the submitted documents was confirmed by the undersigned during the inspection.
Inspection	The inspection conditions were sufficient for the assessment of the vehicle. Lifting equipment and/or a pit were available for examining the vehicle.
Test drive	No test drive/shunting maneuver was carried out during the inspection of the vehicle.
Engine function test	An engine test run was performed.

Value reducing factors

No.	Component group	Description
1	Equipment	Tirefit filler - Expired - Replace
2	Sill - left side	Sill - Scratch(es) - Smart repair
3	Seat - front	Seat cover - left side - Abrasion - Loss in value
4	Braking system	Brake discs and pads - rear (Freibremsen) - Corrosion
5	Wheel / tyres	Alloy rim - rear right side - Scratch(es) - Loss in value
6	Bonnet	Insulation lining - Missing - Replace
7	2nd wheel set	2 alloy rims - Scratch(es) - Loss in value
8	Misc.	Inspection / maintenance - Due - Perform
9	Wheel / tyres	Alloy rim - front right side (Materialabtrag) - Scratched - Replace
10	Rear bumper	Rear bumper - Scratch(es) - Paint
11	Bonnet	Bonnet - Scratch(es) - Paint



Wear and tear

No.	Component group	Description
1	Mudguard - left side	Mudguard - left side - dent(s) - No deduction
2	Bonnet	Bonnet - Stone chips - No deduction
3	Side panel - rear left side	Side panel - dent(s) - No deduction
4	Body	Body - Scratch(es) - No deduction
5	Vehicle glazing	Windscreen - Stone chips - No deduction
6	Side panel - rear right side	Interior trim - Scratch(es) - No deduction

The vehicle shows signs of wear and tear commensurate with its age and use.

Missing parts

Description

Equipment - charging cable (Ladekabel Schuko/Typ 2)

Repainting

No. Repainting

1 Roof, Professionally carried out, Invoice of repair done Non-existent

Paint coat thickness measurement

Roof 165 μm |

Order/Scope of Order

An order was placed to prepare a sales report for the described vehicle. This report includes the following:

- Description of key vehicle information
- Documentation of equipment features
(*Delivery by third-party service providers*)
- Documentation of damage, defects, missing parts
- Documentation of prior damage, unrepaired prior damage, repainting
- A brief visual or functional inspection of the equipment details, if possible.
(*Functional testing of driver assistance systems is not included in the scope of services!*)
- a photographic documentation of the vehicle



Basis for the order

This product is based on the guidelines for vehicle returns and valuations published by Alphabet Fleet GmbH. The expert makes the specific findings in each individual case objectively, within the framework of the prescribed standards, based on their own expertise.

The vehicle inspection takes place in a fully assembled, unassembled state.

Damage or defects that can only be detected during disassembly/diagnostic work or through further investigation remain within the realm of prognostic risk. An increased risk exists due to concealed defects caused by fraudulent misrepresentation and which were not identifiable by the expert.

Damage or defects resulting from normal use or wear and tear of the vehicle will be accepted in accordance with the applicable standard.

There was no explicit identification or monetary consideration of the expected features within the product.

Features which, in their nature and extent, slightly exceed normal use but do not constitute unacceptable damage, will be documented and indicated as signs of wear, if applicable.

Damage or defects that, according to the applicable standard, can no longer be attributed to normal use or wear and tear are listed under "Value Reducing Factors" in the product description.

Depending on the product specification, a monetary ID can be provided. If this takes place, the costs can be 100% d or pro rata depending on the vehicle's age and mileage.

Previous damages

No apparent prior damage that had been repaired could be found on the vehicle.

Comments

-Bremsen zeigen Korrosion, sollte ein freibremsten nicht möglich sein können Folgekosten entstehen



Figure 1: Diagonal front (left)



Figure 2: Diagonal front (right)



Figure 3: Diagonal rear (left)



Figure 4: Diagonal rear (right)



Figure 5: Interior - front



Figure 6: Interior - rear



Figure 7: Instrument cluster



Figure 8: Instrument panel



Figure 9: Interior 360° view



Figure 10: Cargo area

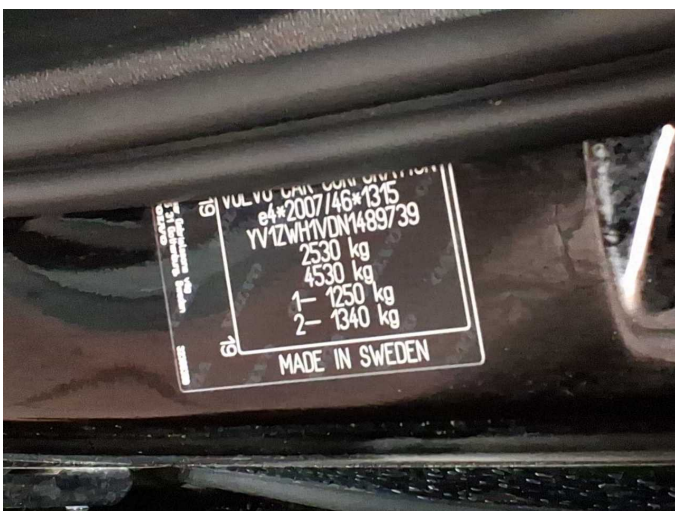


Figure 11: VIN



Figure 12: Mounted tyres



Figure 13: Documents



Figure 14: Documents

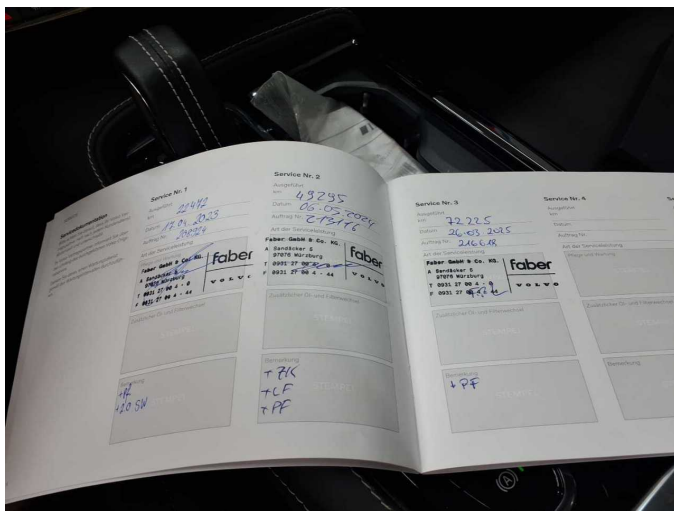


Figure 15: Documents



Figure 16: Documents



Figure 17: Additional tyres

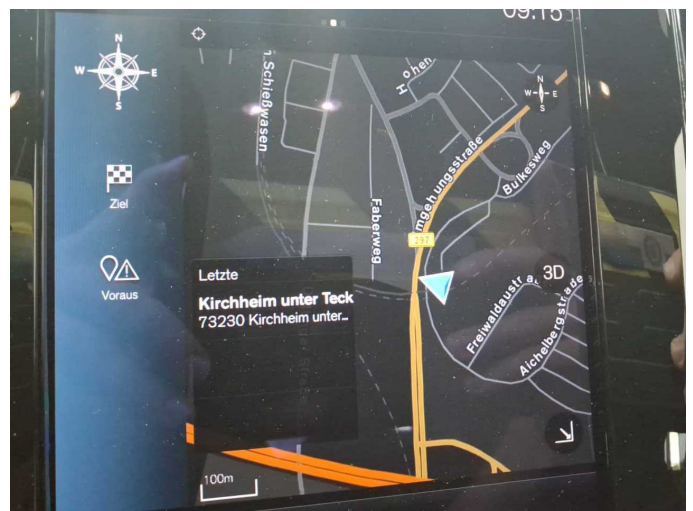


Figure 18: Navigation



Figure 19: Misc.



Figure 20: Misc.



Figure 21: Misc.

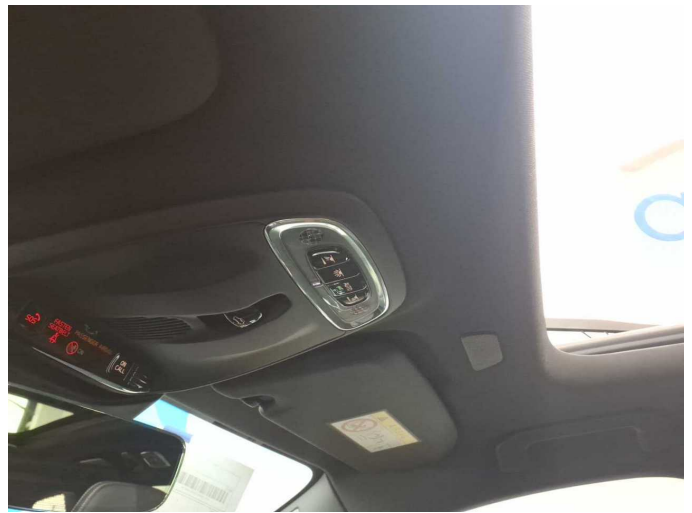


Figure 22: Misc.



Figure 23: Misc.

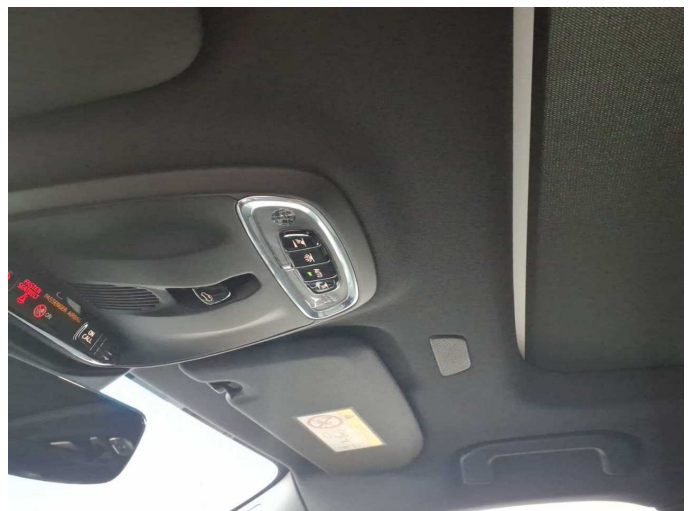


Figure 24: Misc.



Figure 25: Misc.



Figure 26: Misc.

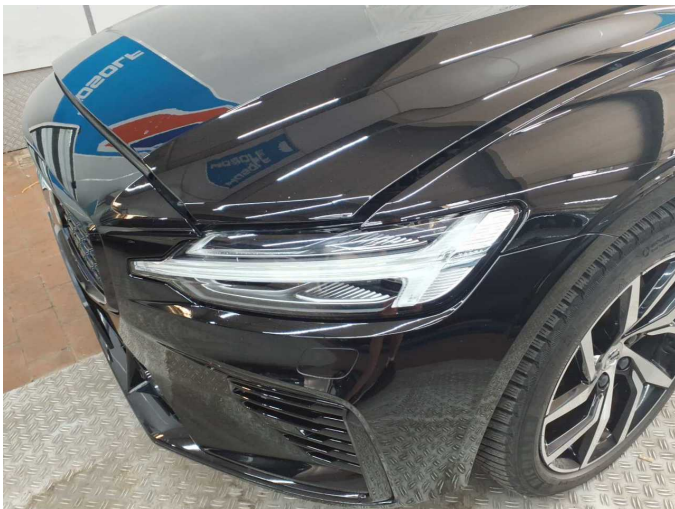


Figure 27: Misc.



Figure 28: Misc.



Figure 29: Misc.



Figure 30: Misc.



Figure 31: Misc.



Figure 32: Misc.

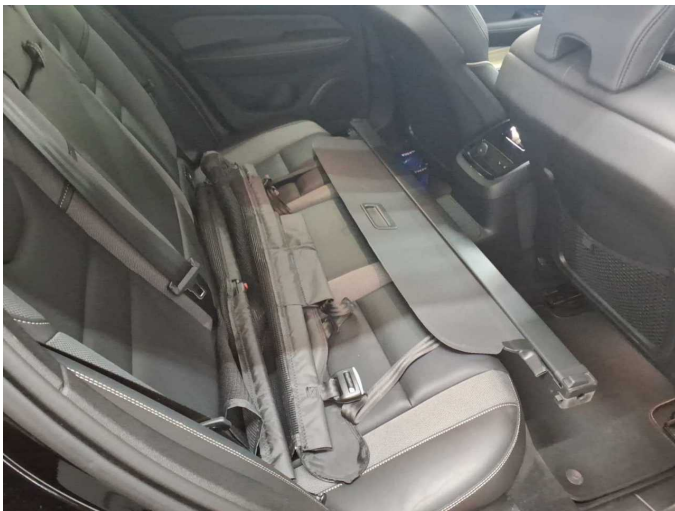


Figure 33: Misc.



Figure 34: Misc.

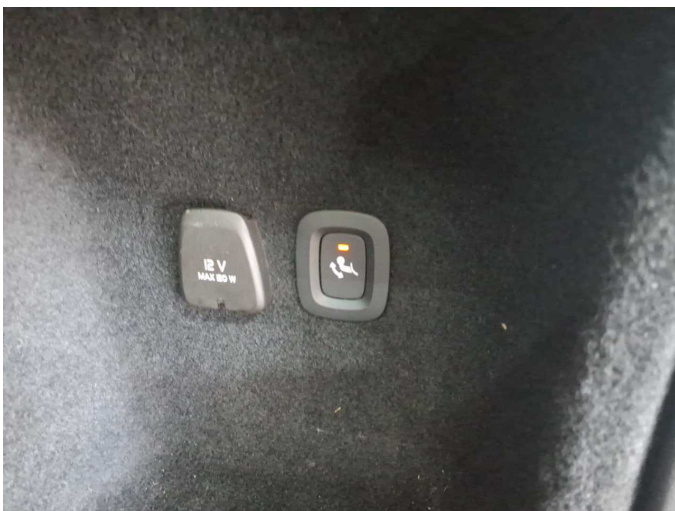


Figure 35: Misc.

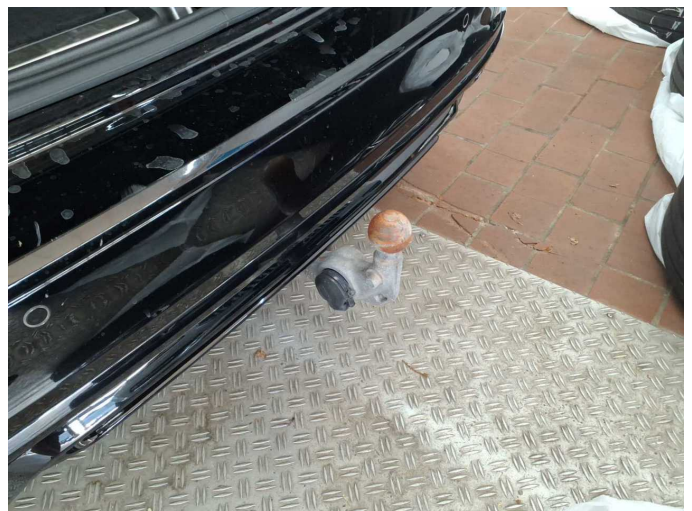


Figure 36: Misc.



Figure 37: Misc.



Figure 38: Misc.

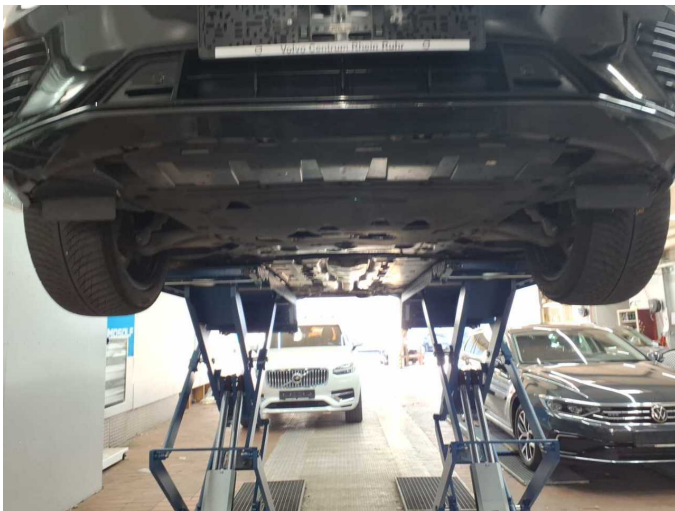


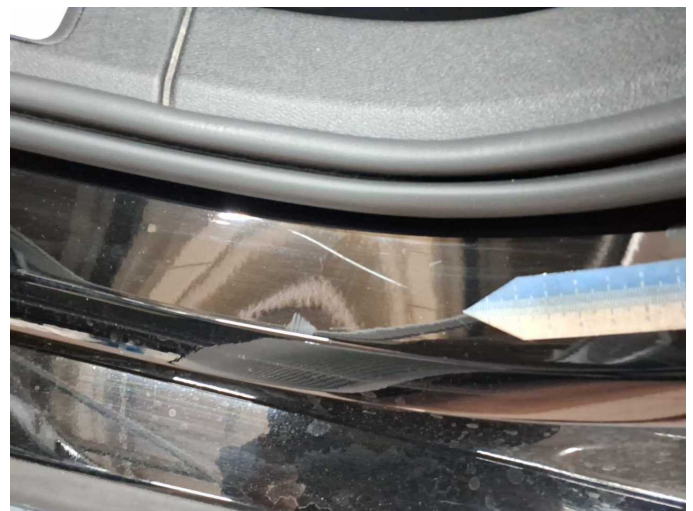
Figure 39: Misc.



Damage 1: Equipment: Tirefit filler - Expired - Replace



Damage 2: Sill - left side: Sill - Scratch(es) - Smart repair



Damage 2: Sill - left side: Sill - Scratch(es) - Smart repair



Damage 3: Seat - front: Seat cover - left side - Abrasion - Loss in value



Damage 3: Seat - front: Seat cover - left side - Abrasion - Loss in value



Damage 4: Braking system: Brake discs and pads - rear (Freibremsen) - Corrosion



Damage 4: Braking system: Brake discs and pads - rear (Freibremsen) - Corrosion



Damage 5: Wheel / tyres: Alloy rim - rear right side - Scratch(es) - Loss in value



Damage 5: Wheel / tyres: Alloy rim - rear right side - Scratch(es) - Loss in value



Damage 5: Wheel / tyres: Alloy rim - rear right side - Scratch(es) - Loss in value



Damage 6: Bonnet: Insulation lining - Missing - Replace



Damage 7: 2nd wheel set: 2 alloy rims - Scratch(es) - Loss in value



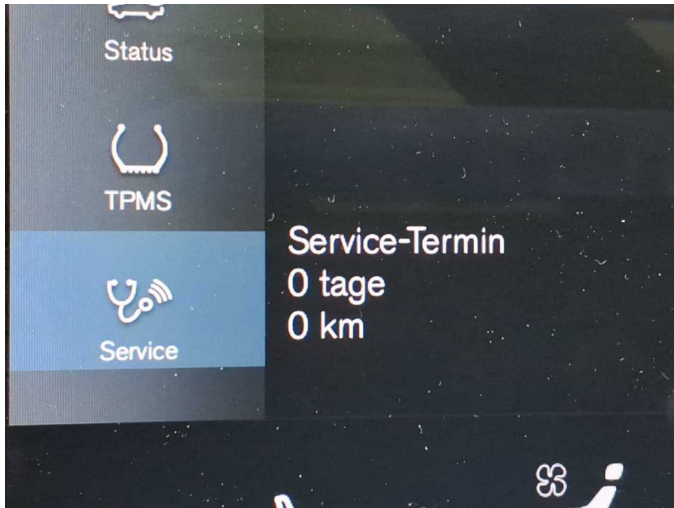
Damage 7: 2nd wheel set: 2 alloy rims - Scratch(es) - Loss in value



Damage 7: 2nd wheel set: 2 alloy rims - Scratch(es) - Loss in value



Damage 7: 2nd wheel set: 2 alloy rims - Scratch(es) - Loss in value



Damage 8: Misc.: Inspection / maintenance - Due - Perform



Damage 9: Wheel / tyres: Alloy rim - front right side (Materialabtrag) - Scratched - Replace



Damage 9: Wheel / tyres: Alloy rim - front right side (Materialabtrag) - Scratched - Replace



Damage 9: Wheel / tyres: Alloy rim - front right side (Materialabtrag) - Scratched - Replace



Damage 9: Wheel / tyres: Alloy rim - front right side (Materialabtrag) - Scratched - Replace



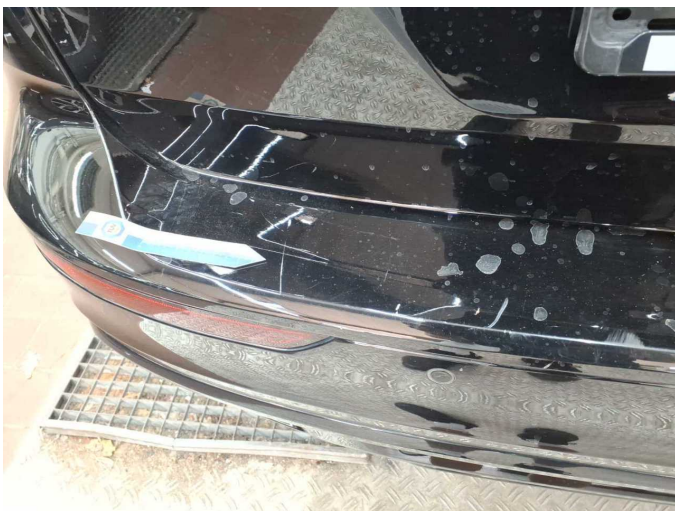
Damage 9: Wheel / tyres: Alloy rim - front right side (Materialabtrag) - Scratched - Replace



Damage 10: Rear bumper: Rear bumper - Scratch(es) - Paint



Damage 10: Rear bumper: Rear bumper - Scratch(es) - Paint



Damage 10: Rear bumper: Rear bumper - Scratch(es) - Paint



Damage 10: Rear bumper: Rear bumper - Scratch(es) - Paint



Damage 10: Rear bumper: Rear bumper - Scratch(es) - Paint



Damage 11: Bonnet: Bonnet - Scratch(es) - Paint



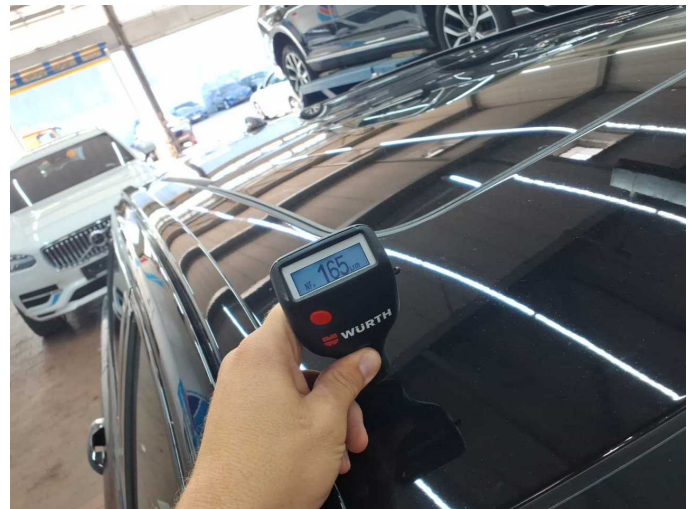
Damage 11: Bonnet: Bonnet - Scratch(es) - Paint



Wear and tear 6: Side panel - rear right side: Interior trim - Scratch(es) - No deduction



Wear and tear 6: Side panel - rear right side: Interior trim - Scratch(es) - No deduction



Repainting 1: Roof



Repainting 1: Roof