

## Expertise

Protocol number: 46137101  
Order No. / Reference: 26530196  
Inspection date: 25 Jun 2026

Manufacturer: Mercedes-Benz

Model: Vito 116 CDI 4MATIC Kompakt Aut. PRO Kasten

VIN: W1VVLASZ7P4256565



### Vehicle details

#### Manufacturer / Type / Model / Equipment

Mercedes-Benz Vito 116 CDI 4MATIC Kompakt Aut. PRO Kasten

**Vehicle Identification number** W1VVLASZ7P4256565

**Mileage (Read)** 196,363 km

**First registration** 5 Jun 2023

**Number of holders** 1

**Next periodical technical inspection** 06/2027  
(Report on hand)

**Power / Engine displacement** 120 kw / 1,950 ccm

**Fuel type / Cylinder** Diesel / 4

**Gearbox / Number of gears** Automatic / 9

**Type of drive** All-wheel drive

**Type of vehicle** Van

**Colour / colour code** ARKTIKWEISS

**Doors / Seats** 4 / 3

**Upholstery type** Cloth

**Colour of upholstery** Black

**Re-import** no

**readiness to drive** Roadworthy



## Vehicle details

<b>Maintenance booklet / proof</b>	digital proof / complete	<b>Next maintenance in</b>	0 Tag(e)
<b>Last service on / at</b>	10/2025 at 162,426 km		
<b>Key is / should be</b>	2 / 2	<b>FZG documents</b>	ZB#2 (B) was available (copy), ZB#1 (S) was not available.
		<b>Letter No.</b>	GU436916
<b>Previous damage / Accident</b>	None detectable	<b>Repainting</b>	None detectable
<b>Inspection conditions</b>	sufficient	<b>Lifting equipment / pit</b>	yes
<b>Test drive</b>	Not performed	<b>Engine function test</b>	Performed
<b>readiness to drive</b>	Roadworthy		
<b>Manufacturer key number/ type code number</b>	2222 / BAX 00922		
<b>Emission standard</b>	EURO6;WLTP;AR;PI/CI;N1 III, N2	<b>fine dust sticker</b>	
<b>Permitted total weight</b>	2,800 kg	<b>Empty weight</b>	

## Tyres

### Mounted tyres

#	Tyre size	Type of tyre	Manufacturer	Tread depth
1)	225/55 R17 109T	Winter tyres on Steel rim with wheel cover	Pirelli	7mm / 7mm
2)	225/55 R17 109T	Winter tyres on Steel rim with wheel cover	Pirelli	6mm / 6mm

### Additional tyres

#	Tyre size	Type of tyre	Manufacturer	Tread depth
1)	225/55 R17 109H	Summer tyres on Steel	Goodyear	6mm / 6mm
2)	225/55 R17 109H	Summer tyres on Steel	Goodyear	7mm / 7mm

**Legend: Tread depth information for the left tire is listed first, for the right tire it is listed second on the axle in the direction of travel.**



## Equipment

### Standard equipment

- Screw-in towing eye front/rear
- Driver's side airbag
- ATTENTION ASSIST
- Outdoor temperature display
- Battery: Backup battery for starting process
- Fixing points in the roof frame
- third brake light
- Front cupholder
- Diesel particulate filter
- Entry grab handle for the cargo area sliding door
- Electronic Stability Program (ADAPTIVE ESP) with integrated Anti-lock Braking System (ABS)
- HVO-capable vehicle
- Parking brake
- Generator management
- Transmission: 9G-TRONIC
- Seatbelt warning device for front passenger seat
- Lockable glove box
- Boot lid
- Tempmatic controlled air conditioning
- Communication module (LTE) for digital services
- Paint finish: Solid color paint
- Headlight range control
- Multifunctional steering wheel
- Package: BlueEFFICIENCY
- Upholstery: Caluma fabric, black
- Radio: Digital Radio DAB
- Tires: 225/55R17
- Tires: Premium protection tires (3 years)
- Wheels: Steel rims 6.5 J x 17
- electromechanical power steering
- Seats: Adjustable passenger seat
- Seats: Comfort driver's seat
- 12V socket
- continuous partition wall
- Pre-installation for Remote Services Plus
- Immobiliser
- Central locking with radio remote control
- Passenger side airbag
- Permanent all-wheel drive
- Electrically adjustable and heated exterior mirrors, left and right
- Battery: fleece battery 12 V / 92 Ah
- Hill start assist
- Brake lights, adaptive
- Comfort roof control unit
- Electronic tachometer
- Electrical components for trailer socket
- Driving light assistant
- Chassis: Standard chassis
- Electric windows, driver/passenger
- Generator 14 V / 250 A
- Speed limit 210 km/h
- Weight variant 2,800 kg
- Seatbelt warning device for driver's seat
- Main tank 57 liters
- Interior trim of cargo area, side
- Instrument cluster with pixel matrix display
- Headrests (2), front
- Steering wheel adjustable for tilt and height
- Mercedes-Benz emergency call system
- Halogen fog lights
- Breakdown management
- Radio/Telematics, Audio 10
- Full wheel cover
- Tires: Tires without specified make
- Tires: Summer tires
- Key: 3-button remote control
- Seat: Lumbar support driver's seat
- Seats: Driver's seat Plus with flat seat surface
- Start-stop function
- Cruise control
- First aid kit
- Warning triangle
- Heat-insulating glass all around
- Registration as a truck



### Extra equipment

- |  |  |
|--|--|
| <ul style="list-style-type: none"> <li>• Airbag: Thorax-pelvis-sidebag for driver</li> <li>• Electrically folding exterior mirrors, left and right</li> <li>• Burglar and theft alarm system (without interior monitoring)</li> <li>• Front right window fixed in SW/ cargo area sliding door</li> <li>• Speed limit 160 km/h</li> <li>• Rear camera not foldable</li> <li>• Windscreen washer system heater</li> <li>• Large fuel tank, approx. 70 liters</li> <li>• leather steering wheel</li> <li>• Package: Driver Assistance Package (Blind Spot Assist - Lane Keeping Assist - COLLISION PREVENTION ASSIST)</li> <li>• Rain sensor</li> <li>• Tire pressure monitoring (on front and rear axles (wireless))</li> <li>• acoustic reversing warning</li> <li>• Rear door, double-leaf, 180° opening, without window</li> <li>• Seats: Passenger seat, two-seater</li> <li>• Partition wall with 1 continuous window</li> <li>• Auxiliary heater (hot water) (incl. instrument cluster with pixel matrix display)</li> </ul> | <ul style="list-style-type: none"> <li>• Airbag: Windowbag for driver and front passenger</li> <li>• Tinted rear windows, black glass</li> <li>• Window in tailgate (with wiper/washer system)</li> <li>• Fire extinguisher 1 kg</li> <li>• Grab handle for driver and front passenger entry in conjunction with window airbags</li> <li>• THERMOTRONIC automatic climate control</li> <li>• LED light strip in the cargo area</li> <li>• Navigation accessories: Live Traffic Information</li> <li>• Package: Parking (reversing camera - PARKTRONIC)</li> <li>• Radio/Navigation: Multimedia radio and navigation system "Audio 40" (7-inch LCD touchscreen - DAB digital radio - Apple CarPlay and Android Auto - Bluetooth 3.0 - Hands-free system - Live Traffic Information - 2-way front speakers)</li> <li>• Weld nuts side wall for extensions</li> <li>• Seat heating on driver's side</li> <li>• Windshield washer fluid level warning light</li> </ul> |
|--|--|

### Retrofitted equipment

- |  |  |
|--|--|
| <ul style="list-style-type: none"> <li>• GEWA conversion according to offer no. 2211374 incl. TÜV and</li> </ul> | <ul style="list-style-type: none"> <li>• Multifunctional box A9078103700 9051</li> </ul> |
|--|--|

### Brief expert findings

Documents submitted	At the time of the inspection, the vehicle registration certificate Part 2 (title) was available, but the vehicle registration certificate Part 1 (document) was not. (Copy)
VIN comparison	The vehicle identification number (VIN) was read from the vehicle and its conformity with the submitted documents was confirmed by the undersigned during the inspection.
Inspection	The inspection conditions were sufficient for the assessment of the vehicle. Lifting equipment and/or a pit were available for examining the vehicle.
Test drive	No test drive/shunting maneuver was carried out during the inspection of the vehicle.
Engine function test	An engine test run was performed.
readiness to drive	The vehicle was roadworthy at the time of inspection.

### Value reducing factors

No.	Component group	Description
1	Wheel / tyres	Wheel cover - front left side - Scratched - Replace
2	Wheel / tyres	Wheel cover - front right side - Scratched - Replace
3	Mudguard - right side	Mudguard - right side - Scratch(es) - Smart repair
4	Side panel - rear right side	Side panel - Scratch(es) - Smart repair
5	Boot lid / rear door	Rear door - left side - Scratch(es) - Smart repair
6	Rear axle	Shock absorber - left side - Leaking - Replace
7	Body	Body - Glued / labelled - De-glue / neutralise
8	Misc.	Inspection / maintenance - Due - Perform
9	Braking system	Brake discs and pads - rear - Worn - Replace
10	Mudguard - left side	Mudguard - left side - Dent / paintcoat damage - Repair and paint
11	Vehicle glazing	Windscreen - Stone chips - Replace



## Wear and tear

No.	Component group	Description
1	Front bumper	Front bumper - Scratch(es) - No deduction

The vehicle shows signs of wear and tear commensurate with its age and use.

## Order/Scope of Order

An order was placed to prepare a sales report for the described vehicle. This report includes the following:

- Description of key vehicle information
- Documentation of equipment features  
*(Delivery by third-party service providers)*
- Documentation of damage, defects, missing parts
- Documentation of prior damage, unrepaired prior damage, repainting
- A brief visual or functional inspection of the equipment details, if possible.  
*(Functional testing of driver assistance systems is not included in the scope of services!)*
- a photographic documentation of the vehicle

## Basis for the order

This product is based on the guidelines for vehicle returns and valuations of light commercial vehicles published by Alphabet Fleet Management GmbH. The expert makes the specific findings in each individual case objectively, within the framework of the prescribed standards, based on their own expertise.

The vehicle inspection takes place in a fully assembled, unassembled state.

Damage or defects that can only be detected during disassembly/diagnostic work or through further investigation remain within the realm of prognostic risk. An increased risk exists due to concealed defects caused by fraudulent misrepresentation and which were not identifiable by the expert.

Damage or defects resulting from normal use or wear and tear of the vehicle will be accepted in accordance with the applicable standard.

There was no explicit identification or monetary consideration of the expected features within the product.

Features which, in their nature and extent, slightly exceed normal use but do not constitute unacceptable damage, will be documented and indicated as signs of wear, if applicable.

Damage or defects that, according to the applicable standard, can no longer be attributed to normal use or wear and tear are listed under "Value Reducing Factors" in the product description.

Depending on the product specification, a monetary ID can be provided. If this takes place, the costs can be 100% d or pro rata depending on the vehicle's age and mileage.

## Previous damages

No apparent prior damage that had been repaired could be found on the vehicle.

## Comments

- Für den montierten Radsatz wurde kein Nachweis erbracht.
- Winterradsatz ist kein Bestandteil des Auslieferungsumfangs.



Figure 1: Diagonal front (left)



Figure 2: Diagonal front (right)



Figure 3: Diagonal rear (left)



Figure 4: Diagonal rear (right)

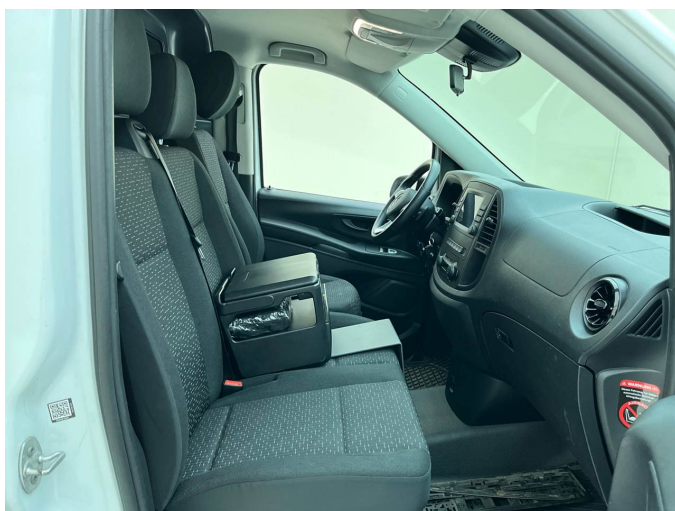


Figure 5: Interior - front



Figure 6: Interior - rear



Figure 7: Instrument cluster



Figure 8: Instrument panel



Figure 9: Interior 360° view



Figure 10: Cargo area



Figure 11: VIN



Figure 12: Mounted tyres



Figure 13: Documents



Figure 14: Documents



Figure 15: Documents



Figure 16: Documents



Figure 17: Documents



Figure 18: Additional tyres



Figure 19: Navigation



Figure 20: Misc.



Figure 21: Misc.



Figure 22: Misc.



Figure 23: Misc.



Figure 24: Misc.



Figure 25: Misc.



Figure 26: Misc.



Figure 27: Misc.



Figure 28: Misc.



Figure 29: Misc.



Figure 30: Misc.



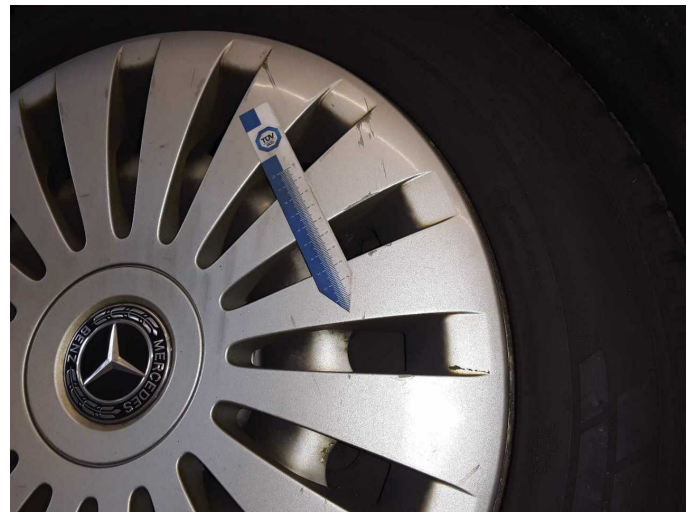
Figure 31: Misc.



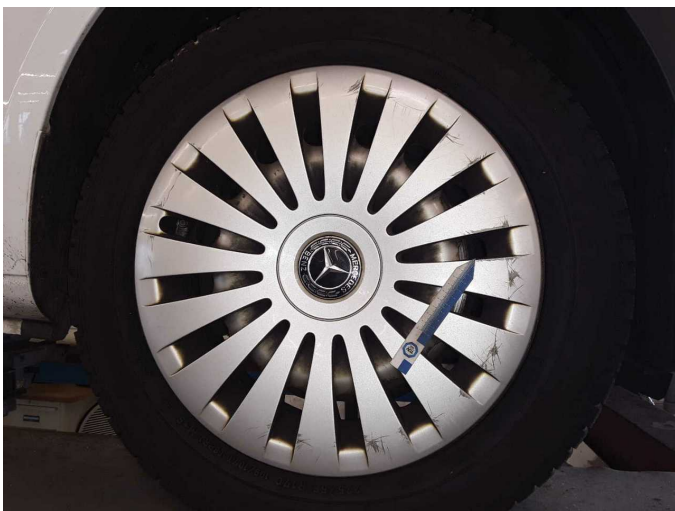
Figure 32: Misc.



Damage 1: Wheel / tyres: Wheel cover - front left side - Scratched - Replace



Damage 1: Wheel / tyres: Wheel cover - front left side - Scratched - Replace



Damage 2: Wheel / tyres: Wheel cover - front right side - Scratched - Replace



Damage 2: Wheel / tyres: Wheel cover - front right side - Scratched - Replace



**Damage 3:** Mudguard - right side: Mudguard - right side - Scratch(es) - Smart repair



**Damage 3:** Mudguard - right side: Mudguard - right side - Scratch(es) - Smart repair



**Damage 4:** Side panel - rear right side: Side panel - Scratch(es) - Smart repair



**Damage 4:** Side panel - rear right side: Side panel - Scratch(es) - Smart repair



**Damage 5:** Boot lid / rear door: Rear door - left side - Scratch(es) - Smart repair



**Damage 5:** Boot lid / rear door: Rear door - left side - Scratch(es) - Smart repair



**Damage 6:** Rear axle: Shock absorber - left side - Leaking - Replace



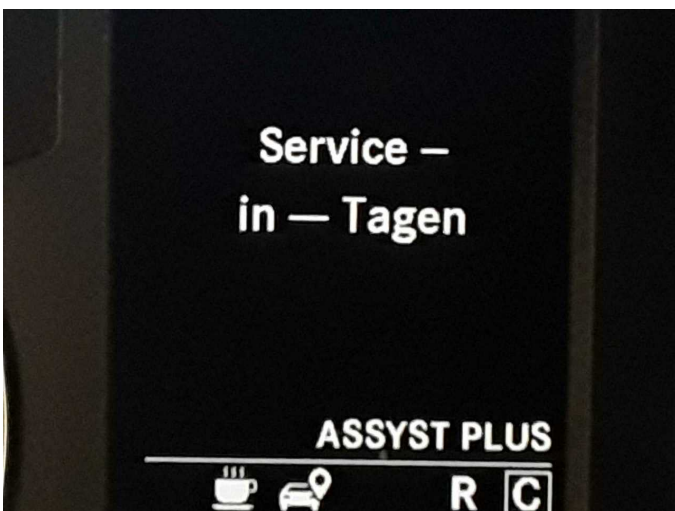
**Damage 7:** Body: Body - Glued / labelled - De-glug / neutralise



**Damage 7:** Body: Body - Glued / labelled - De-glug / neutralise



**Damage 7:** Body: Body - Glued / labelled - De-glug / neutralise



**Damage 8:** Misc.: Inspection / maintenance - Due - Perform



**Damage 9:** Braking system: Brake discs and pads - rear - Worn - Replace



**Damage 9:** Braking system: Brake discs and pads - rear - Worn - Replace



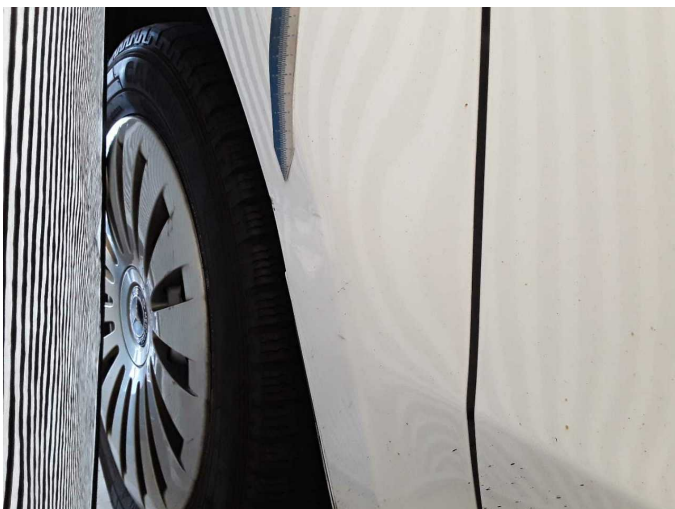
**Damage 9:** Braking system: Brake discs and pads - rear - Worn - Replace



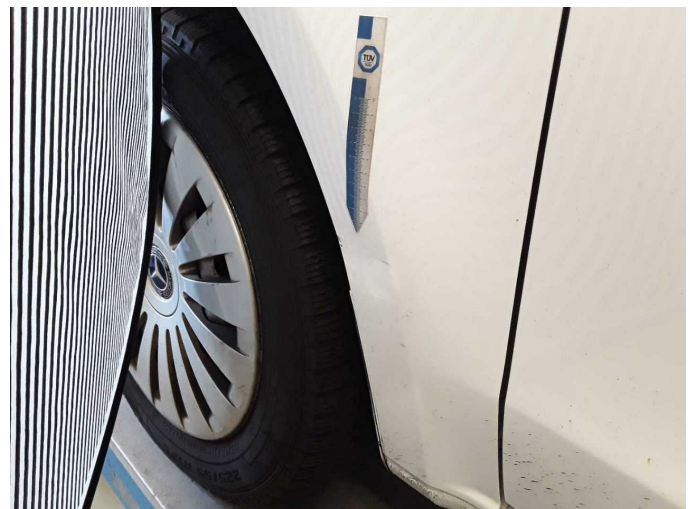
**Damage 9:** Braking system: Brake discs and pads - rear - Worn - Replace



**Damage 10:** Mudguard - left side: Mudguard - left side - Dent / paintcoat damage - Repair and paint



**Damage 10:** Mudguard - left side: Mudguard - left side - Dent / paintcoat damage - Repair and paint



**Damage 10:** Mudguard - left side: Mudguard - left side - Dent / paintcoat damage - Repair and paint



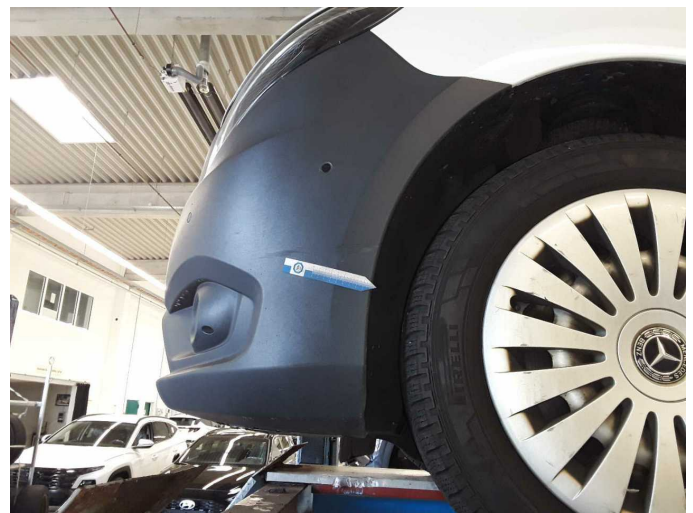
**Damage 10:** Mudguard - left side: Mudguard - left side - Dent / paintcoat damage - Repair and paint



**Damage 11:** Vehicle glazing: Windscreen - Stone chips - Replace



**Damage 11:** Vehicle glazing: Windscreen - Stone chips - Replace



**Wear and tear 1:** Front bumper: Front bumper - Scratch(es) - No deduction



**Wear and tear 1:** Front bumper: Front bumper - Scratch(es) - No deduction



# Wartungshistorie

(gemäß Auftraggeber Informationen)

Fahrgestellnummer: W1VVLASZ7P4256565  
Hersteller / Modell: MERCEDES-BENZ MERCEDES-BENZ Vito 116 CDI 4MATIC  
Kompakt Aut. PRO

Datum	KM-Stand	Beschreibung
03.02.2026	181.878	Systemtest/Eigendiagnose
08.10.2025	162.426	Batterie ern; Regelwartungsdienst; Reparatur Sonstiges; Systemtest/ Eigendiagnose
22.05.2025	139.094	AU
12.03.2025	125.945	Bremsscheiben+Beläge v+h; Regelwartungsdienst
01.08.2024	83.665	Regelwartungsdienst
06.07.2024	79.098	Bremsinspektion vo + hi
10.01.2024	42.467	Regelwartungsdienst