

Expertise

Protocol number: 45007296
Order No. / Reference: 26220579
Inspection date: 17 Apr 2026

Manufacturer: Seat

Model: Tarraco 2.0 TDI SCR DSG Style

VIN: VSSZZZKNZMW010742



Vehicle details

Manufacturer / Type / Model / Equipment

Seat Tarraco 2.0 TDI SCR DSG Style

Vehicle Identification number VSSZZZKNZMW010742

Mileage (Read) 106,310 km

First registration 6 Apr 2021

Number of holders 2

Next periodical technical inspection 11/2026
(Report not on hand)

Power / Engine displacement 110 kw / 1,968 ccm

Fuel type / Cylinder Diesel / 4

Gearbox / Number of gears Automatic / 7

Type of drive Front drive

Type of vehicle SUV

Colour / colour code Urano Grau (I7F)

Doors / Seats 5 / 5

Upholstery type Cloth

Colour of upholstery Black-Dark grey



Vehicle details

Maintenance booklet / proof	digital proof / complete	Next maintenance in	12,000 km
Last service on / at	03/2026 at 104,765 km		
Key is / should be	2 / 2	FZG documents	ZB#1 (S) was available (copy), ZB#2 (B) was not available.
		Letter No.	GA441269
Previous damage / Accident	None detectable	Repainting	None detectable
Inspection conditions	sufficient	Lifting equipment / pit	yes
Test drive	Not performed	Engine function test	Performed
Manufacturer key number/ type code number	7593 / AOR 01294		
Emission standard	EURO6;WLTP;AP;PI/CI; M, N1 I	fine dust sticker	
Permitted total weight	2,270 kg	Empty weight	

Tyres

Mounted tyres

#	Tyre size	Type of tyre	Manufacturer	Tread depth
1)	215/65 R17 99H	Winter tyres on Light alloy	Pirelli	6mm / 6mm
2)	215/65 R17 99H	Winter tyres on Light alloy	Pirelli	7mm / 7mm

Additional tyres

#	Tyre size	Type of tyre	Manufacturer	Tread depth
1)	235/55 R18 100V	Summer tyres on Light alloy	Hankook	6mm / 6mm
2)	235/55 R18 100V	Summer tyres on Light alloy	Hankook	7mm / 7mm

Replacement

Typ	Tyre size	Type of tyre	Manufacturer	Tread depth
E	145/85 R18 103M	All-season tyres on Steel	Sonstige	4 mm

Legend: Tread depth information for the left tire is listed first, for the right tire it is listed second on the axle in the direction of travel.



Equipment

Standard equipment

- 12V socket at the front
- Storage pocket and folding table on the back of the front seatbacks
- Electrically adjustable, folding and heated exterior mirrors
- Turn signals and welcome light integrated into the exterior mirrors
- Black headliner
- Diesel particulate filter and SCR catalyst
- Three-point automatic seat belts, front and rear
- Rear parking sensors
- Electronic Stability Control (ESC)
- Footwell lighting
- Luggage compartment, illuminated
- Cruise control system (GRA)
- Illuminated glove compartment
- Rear window wiper and rear window heater
- ISOFIX child seat restraint system
- Air conditioning
- Black radiator grille
- Steering wheel: Multifunction steering wheel in leather
- Light sensor with automatic headlight control
- Fatigue detection
- LED fog lights with cornering light function
- Upholstery: Cloth
- Rain sensor
- Wheels: 4 "Dynamic" alloy wheels
- Leather gear knob
- Electromechanical power steering
- Seats: Comfort seats
- Seats: Lumbar support for driver and front passenger
- Seats: Front seats with height adjustment
- Sun visors with illuminated makeup mirror
- Start-stop technology
- Front Assist area monitoring system with City Emergency Braking function
- Virtual Cockpit
- Electronic immobilizer
- Central locking, including tailgate, with remote control

Extra equipment

- Swiveling trailer hitch with electric release
- Package: Business Package INFOTAIN (Navigation system - Navigation data incl. MAPCARE - BeatsAudio sound system - Wireless charger in the storage compartment of the center console - Spare wheel as emergency wheel)
- Package: Driving assistance package L for navigation system (High beam assistant - Pre-crash assistant with rollover detection - Side Assist - Traffic sign recognition - Adaptive cruise control ACC up to 210 km/h with predictive speed control)

- Storage compartment for glasses
- Airbags
- Automatic coming-home and leaving-home function
- Exterior mirror housings in body color
- Owner's manual holder under the driver's seat
- Chrome applications in the interior
- Roof rails in black
- Electronic differential lock (XDS)
- Third brake light
- Electronic parking brake including auto-hold function
- Electric windows front and rear
- Gear recommendation display
- Luggage compartment cover
- Transmission: 7-speed DSG automatic transmission
- LED taillights
- Interior mirror automatically dimming
- Body covers on the wheel arches
- Headrests, 2 front, 3 rear
- Paint finish: Solid
- Reading lights, 2 in the front and 2 in the rear
- Center console with integrated storage compartment, center armrest, cup holders
- Emergency call function
- Radio: Media System Plus
- Tire pressure monitoring system
- Wheels: Tyre fit
- SEAT CONNECT
- Seats: Front passenger seat backrest can be folded down completely
- Seats: Rear bench seat longitudinally adjustable and asymmetrically split and foldable
- Lane departure warning system
- LED daytime running lights
- Variable luggage compartment floor
- Lashing eyes in the luggage compartment
- Full LED headlights
- Thermal insulation glazing

- Luggage partition net (including remote release for folding down the rear seat backrest)
- Package: DESIGN (4 18-inch "Performance" alloy wheels - polished finish - dark tinted side windows from the 2nd row of seats and rear window - chrome trim on the side windows - ambient lighting (single color) in the door panels)



- Package: Winter (STYLE) (Heated front seats)
- Auxiliary heater including remote control
- Package: FUNCTION (Electrically operated tailgate (opening and closing) including sensor-controlled opening and closing - Keyless locking and starting system "Kessy" - Park Assist with front parking aid - Rearview camera)
- Panoramic glass sliding roof, electric, including sunshade blind.

Brief expert findings

Documents submitted	At the time of the inspection, the vehicle registration certificate Part 1 (registration document) was available, but the vehicle registration certificate Part 2 (title) was not. (Copy)
VIN comparison	The vehicle identification number (VIN) was read from the vehicle and its conformity with the submitted documents was confirmed by the undersigned during the inspection.
Inspection	The inspection conditions were sufficient for the assessment of the vehicle. Lifting equipment and/or a pit were available for examining the vehicle.
Test drive	No test drive/shunting maneuver was carried out during the inspection of the vehicle.
Engine function test	An engine test run was performed.

Value reducing factors

No.	Component group	Description
1	Side panel - rear right side	Sill - Scratched - Smart repair
2	Boot lid / rear door	Boot lid - dent(s) - Smooth repair work
3	Rear bumper	Rear bumper - Scratched - Smart repair
4	Door - front left side	Door edge - Scratched - Smart repair
5	Door - rear right side	Door - Dent / paintcoat damage - Smart repair
6	2nd wheel set	1 alloy rim (Materialabtrag) - Scratched - Loss in value
7	Door - front right side	Door - Dent / paintcoat damage - Repair and paint
8	Bonnet	Bonnet (Vogelkot) - Paint defect - Paint

Order/Scope of Order

An order was placed to prepare a sales report for the described vehicle. This report includes the following:

- Description of key vehicle information
- Documentation of equipment features
(Delivery by third-party service providers)
- Documentation of damage, defects, missing parts
- Documentation of prior damage, unrepaired prior damage, repainting
- A brief visual or functional inspection of the equipment details, if possible.
(Functional testing of driver assistance systems is not included in the scope of services!)
- a photographic documentation of the vehicle



Basis for the order

This product is based on the guidelines for vehicle returns and valuations published by Alphabet Fleet GmbH. The expert makes the specific findings in each individual case objectively, within the framework of the prescribed standards, based on their own expertise.

The vehicle inspection takes place in a fully assembled, unassembled state.

Damage or defects that can only be detected during disassembly/diagnostic work or through further investigation remain within the realm of prognostic risk. An increased risk exists due to concealed defects caused by fraudulent misrepresentation and which were not identifiable by the expert.

Damage or defects resulting from normal use or wear and tear of the vehicle will be accepted in accordance with the applicable standard.

There was no explicit identification or monetary consideration of the expected features within the product.

Features which, in their nature and extent, slightly exceed normal use but do not constitute unacceptable damage, will be documented and indicated as signs of wear, if applicable.

Damage or defects that, according to the applicable standard, can no longer be attributed to normal use or wear and tear are listed under "Value Reducing Factors" in the product description.

Depending on the product specification, a monetary ID can be provided. If this takes place, the costs can be 100% d or pro rata depending on the vehicle's age and mileage.

Previous damages

No apparent prior damage that had been repaired could be found on the vehicle.



Figure 1: Diagonal front (left)



Figure 2: Diagonal front (right)



Figure 3: Diagonal rear (left)



Figure 4: Diagonal rear (right)

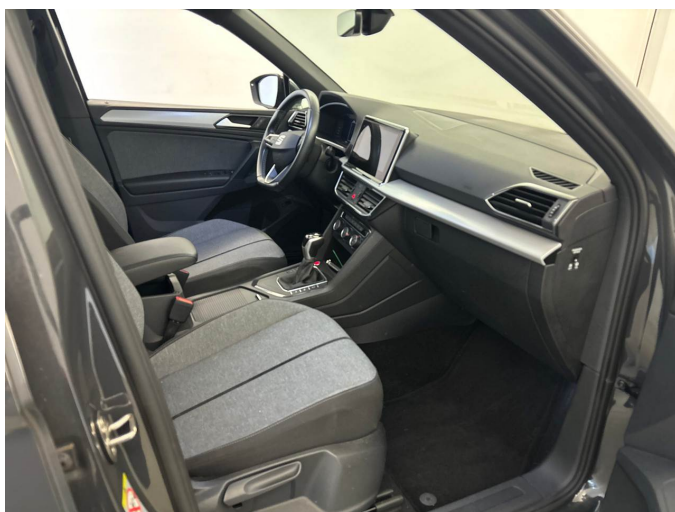


Figure 5: Interior - front

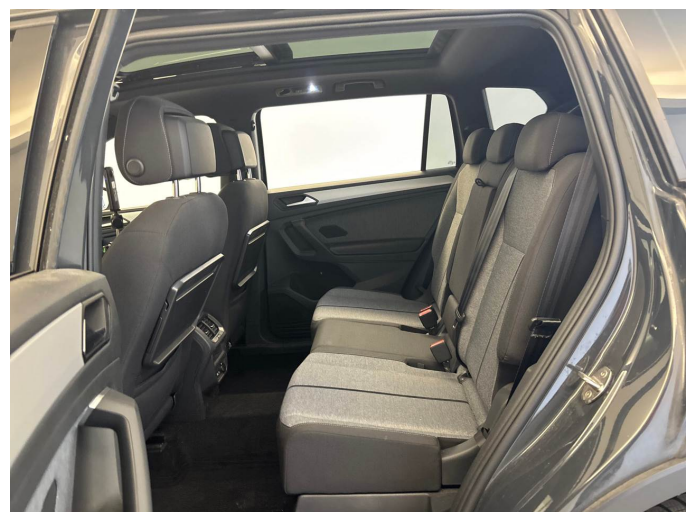


Figure 6: Interior - rear



Figure 7: Instrument cluster



Figure 8: Instrument panel



Figure 9: Interior 360° view



Figure 10: Cargo area

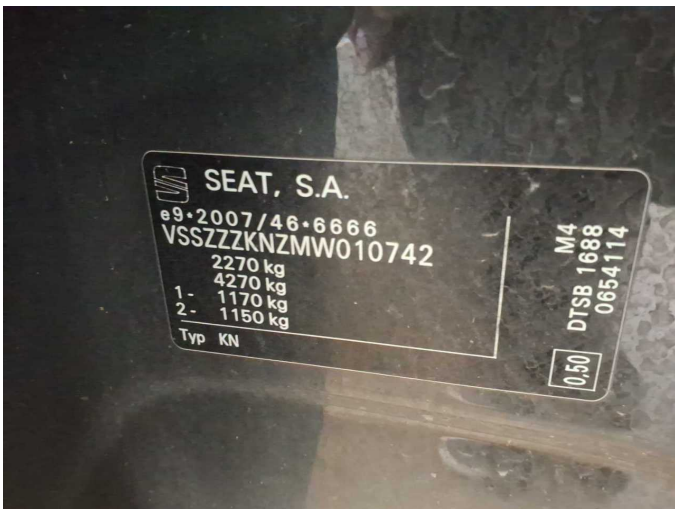


Figure 11: VIN



Figure 12: Mounted tyres



Figure 13: Documents



Figure 14: Documents

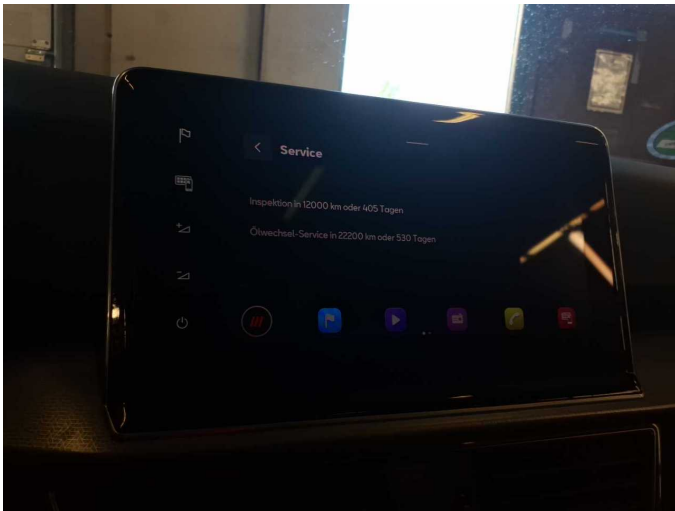


Figure 15: Documents



Figure 16: Additional tyres

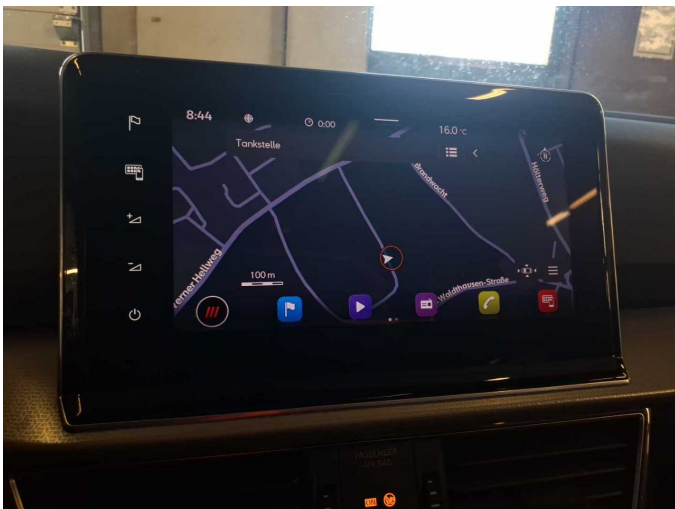


Figure 17: Navigation



Figure 18: Misc.



Figure 19: Misc.



Figure 20: Misc.



Figure 21: Misc.



Figure 22: Misc.



Figure 23: Misc.



Figure 24: Misc.



Figure 25: Misc.



Figure 26: Misc.



Figure 27: Misc.



Figure 28: Misc.



Figure 29: Misc.



Figure 30: Misc.



Damage 1: Side panel - rear right side: Sill - Scratched - Smart repair



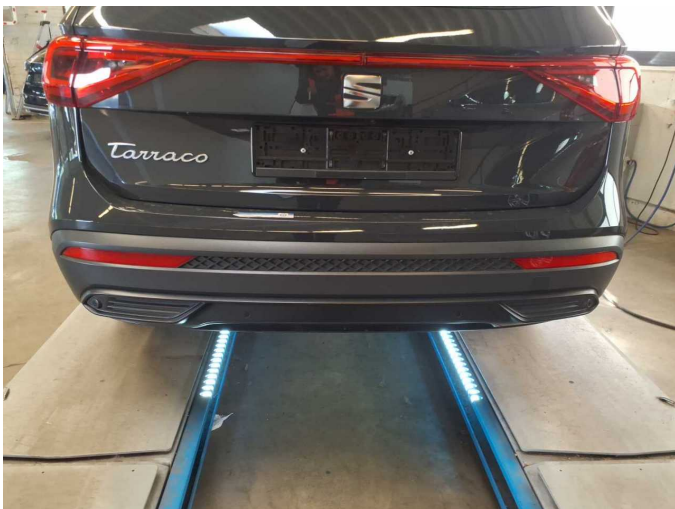
Damage 1: Side panel - rear right side: Sill - Scratched - Smart repair



Damage 2: Boot lid / rear door: Boot lid - dent(s) - Smooth repair work



Damage 2: Boot lid / rear door: Boot lid - dent(s) - Smooth repair work



Damage 3: Rear bumper: Rear bumper - Scratched - Smart repair



Damage 3: Rear bumper: Rear bumper - Scratched - Smart repair



Damage 4: Door - front left side: Door edge - Scratched - Smart repair



Damage 4: Door - front left side: Door edge - Scratched - Smart repair



Damage 5: Door - rear right side: Door - Dent / paintcoat damage - Smart repair



Damage 5: Door - rear right side: Door - Dent / paintcoat damage - Smart repair



Damage 5: Door - rear right side: Door - Dent / paintcoat damage - Smart repair



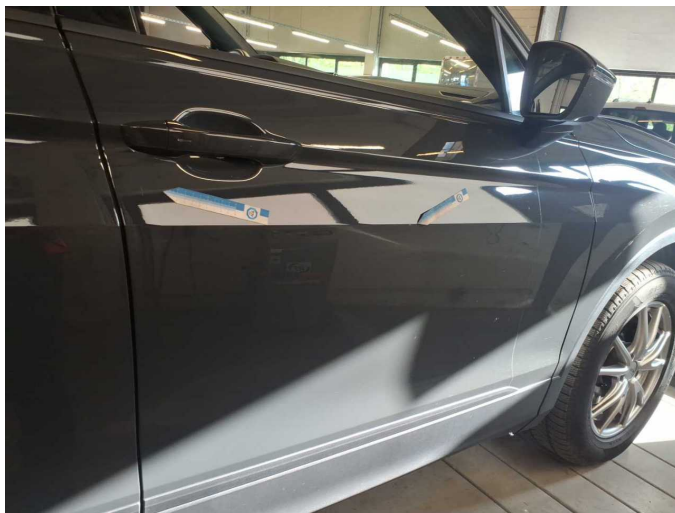
Damage 6: 2nd wheel set: 1 alloy rim (Materialabtrag) - Scratched - Loss in value



Damage 6: 2nd wheel set: 1 alloy rim (Materialabtrag) - Scratched - Loss in value



Damage 6: 2nd wheel set: 1 alloy rim (Materialabtrag) - Scratched - Loss in value



Damage 7: Door - front right side: Door - Dent / paintcoat damage - Repair and paint



Damage 7: Door - front right side: Door - Dent / paintcoat damage - Repair and paint



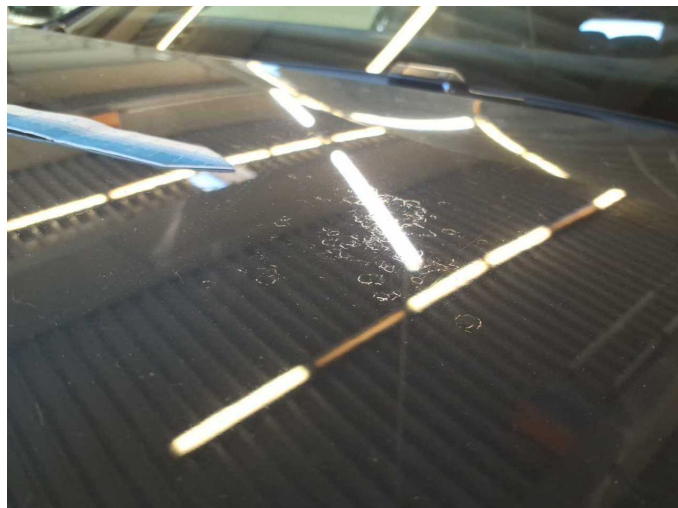
Damage 7: Door - front right side: Door - Dent / paintcoat damage - Repair and paint



Damage 7: Door - front right side: Door - Dent / paintcoat damage - Repair and paint



Damage 8: Bonnet: Bonnet (Vogelkot) - Paint defect - Paint



Damage 8: Bonnet: Bonnet (Vogelkot) - Paint defect - Paint



Wartungshistorie

(gemäß Auftraggeber Informationen)

Fahrgestellnummer: VSSZZZKNZMW010742
Hersteller / Modell: SEAT SEAT Tarraco 2.0 TDI SCR DSG Style

Datum	KM-Stand	Beschreibung
03.03.2026	104.765	Bremse Sonstiges; Bremsflüssigkeit; Bremsflüssigkeit ern; Bremsklötze vorne; Bremsscheiben vorne; Motoröl b. Wartung; Ölfilter ern; Ölwechsel; Wartung Sonstiges
27.05.2025	88.265	Kraftstofffilter ern; Luftfiltereinsatz ern; Regelwartungsdienst; Systemtest/ Eigendiagnose
25.11.2024	78.796	Motoröl b. Wartung; Ölfilter ern; Ölwechsel; Wartung Sonstiges
23.04.2024	0	HU + AU
16.04.2024	65.948	Bremse Sonstiges; Bremsklötze hinten; Bremsscheiben hinten
14.12.2023	58.916	Bremsflüssigkeit; Bremsflüssigkeit ern; Regelwartungsdienst; Wartung Sonstiges
31.08.2023	52.017	Motoröl b. Wartung; Ölfilter ern; Ölwechsel; Wartung Sonstiges
01.09.2022	29.389	Regelwartungsdienst
20.05.2022	25.078	Motoröl b. Wartung; Ölwechsel