

Expertise

Protocol number: 45462013
Order No. / Reference: 26243298
Inspection date: 13 May 2026

Manufacturer: Skoda

Model: Kodiaq 2.0 TDI DSG Ambition

VIN: TMBJJ9NS3P8520995



Vehicle details

Manufacturer / Type / Model / Equipment

Skoda Kodiaq 2.0 TDI DSG Ambition

Vehicle Identification number TMBJJ9NS3P8520995

Mileage (Read) 127,030 km

First registration 17 Apr 2023

Number of holders 1

Power / Engine displacement 110 kw / 1,968 ccm

Fuel type / Cylinder Diesel / 4

Gearbox / Number of gears Automatic / 7

Type of drive Front drive

Type of vehicle SUV

Colour / colour code Blau Race Metallic (F5W)

Doors / Seats 5 / 5

Upholstery type Alcantara / Leather

Colour of upholstery Black-Anthracite



Vehicle details

Maintenance booklet / proof	digital proof / complete	Next maintenance in	23,200 km
Last service on / at	12/2025 at 120,169 km		
Key is / should be	2 / 2	FZG documents	ZB#2 (B) was available (copy), ZB#1 (S) was not available.
		Letter No.	GQ565165
Previous damage / Accident	None detectable	Repainting	None detectable
Inspection conditions	sufficient	Lifting equipment / pit	yes
Test drive	Not performed	Engine function test	Performed
Manufacturer key number/ type code number	8004 / ART 03807		
Emission standard	EURO6;WLTP;AP;PI/CI; M, N1 I	fine dust sticker	
Permitted total weight	2,350 kg	Empty weight	

Tyres

Mounted tyres

#	Tyre size	Type of tyre	Manufacturer	Tread depth
1)	215/65 R17 103H	Winter tyres on Light alloy	Bridgestone	4mm / 4mm
2)	215/65 R17 103H	Winter tyres on Light alloy	Bridgestone	4mm / 4mm

Additional tyres

#	Tyre size	Type of tyre	Manufacturer	Tread depth
1)	215/65 R17 99V	Summer tyres on Light alloy	Hankook	4mm / 4mm
2)	215/65 R17 99V	Summer tyres on Light alloy	Hankook	5mm / 5mm

Replacement

Typ	Tyre size	Type of tyre	Manufacturer	Tread depth
E	215/65 R17 99V	Summer tyres on Steel	Nexen	7 mm

Legend: Tread depth information for the left tire is listed first, for the right tire it is listed second on the axle in the direction of travel.

Equipment

Standard equipment

- 12V socket in the center console and in the trunk
- Storage compartments behind the wheel arches in the trunk
- Airbag, driver's knee airbag
- Airbag, front side airbags
- Anti-lock braking system (ABS)
- Dashboard in black / black, door trim in black
- Electrically adjustable and heated exterior mirrors with integrated side indicators
- Hydraulic brake assist (HBA)
- Grey headliner
- Decorative inlay, brushed aluminum
- Digital Cockpit (8")
- Third brake light
- eCall
- Electronic transverse differential lock (XDS+)
- Driving light assistant and rain sensor
- Front radar assistant including city emergency braking function with pedestrian detection
- Transmission: 7-speed dual-clutch transmission (DSG)
- Illuminated glove compartment
- Climatronic air conditioning (2-zone)
- Boot cover, roll-up and removable
- LED taillights in crystal glass look with animated turn signals
- Reading lights at the front of the headliner
- Rear center armrest with cup holders
- Engine drag torque control (MSR)
- Fog lights with integrated LED daytime running lights
- Upholstery: Cloth
- Radio: Swing 6.5" music system
- Radio accessories: Digital radio reception DAB+
- Tire pressure monitoring
- Rear seat backrest split 60:40, foldable, longitudinally adjustable, backrest angle adjustable
- Electromechanical power steering
- Seats: Adjustable lumbar support in the front seats
- Skoda Care Connect
- Speed limiter
- Telephone: Comfort hands-free telephone system (without connection to the external antenna)
- Immobiliser
- Storage compartment on the left wheel arch
- front aero windshield wipers
- Airbag, driver and passenger
- Airbag, head airbags
- Allergen filter
- Traction control (ASR)
- Electrically folding exterior mirrors including interior and driver's side mirrors with automatic dimming
- Hill start assist
- Care Connect: Proactive services (10-year term)
- Roof rails, black
- Diesel particulate filter
- Tachometer
- Easy Start (start-stop button)
- Electronic parking brake including auto-hold function
- ESC Electronic Stability Control
- Electric windows front and rear
- Closed storage compartment on the driver's side
- Cruise control
- Tinted windows
- Isofix anchorage on the outer rear seats including top tether
- Front and rear headrests are height-adjustable.
- LED headlights with daytime running lights
- Steering wheel: Leather steering wheel with multifunction buttons including paddle shifters.
- Front center armrest, including storage compartment
- Multi-collision brake
- Rear parking sensors
- Wheel arch cover
- Radio accessories: 8 speakers
- Tire Mobility Kit
- Wheels: 17" Mytikas alloy wheels
- Heated windshield washer nozzles, front
- Headlights washer / wiper system
- Kodiaq seat belts
- Seats: Height-adjustable front seats
- Sun visor on driver and passenger side with illuminated vanity mirror
- Variable fastening concept in the trunk
- Lashing eyes in the trunk
- Central locking with remote control



Extra equipment

- Swiveling trailer hitch (with electric release, including trailer stabilization)
- Chassis: Adaptive chassis DCC including driving profile selection
- High Beam Assist (Light Assist)
- Climatronic air conditioning (3-zone) (fully automatic, separately adjustable for driver, front passenger and rear seats, including humidity sensor and odor and allergen filter)
- Steering wheel: Heated steering wheel (height and reach adjustable leather steering wheel with multifunction buttons including paddle shifters)
- Upholstery: Microfiber leather interior Emory Black (microfiber seat surfaces, vachette leather side bolsters, combined with high-quality materials)
- Proactive occupant protection including rear side airbags
- Radio: Bolero infotainment system (Bolero music system - 8" capacitive color display - SmartLink - Wireless SmartLink for Apple CarPlay - voice control)
- Wheels: 17" steel spare wheel (6.5Jx17 tires 215/65 R17 ET38 incl. jack, wheel bolt wrench, load floor cover replaces tire mobility kit)
- Traveller Plus (DSG) assistance system (Predictive Adaptive Cruise Control pACC (control range up to 210 km/h) - Lane Assist - Adaptive Lane Guidance - Park Assist - Traffic Jam and Emergency Assist - Traffic Sign Recognition)
- Paint finish: Metallic / Pearl effect
- LED ambient lighting (decorative strips in the door panels with selectable color climate, LED reading lights in the front, LED lighting for the make-up mirrors in the sun visors)
- Package: Business Columbus (Ambition) (Dynamic radio navigation system Columbus - 9.2" capacitive color display - Digital Cockpit Plus (10") - Wireless SmartLink for Apple CarPlay - Voice control - Phonebox with inductive charging function (connection via external antenna) - Driver fatigue detection - 230V socket and one USB charging port (Type-C) - Electric tailgate operation including comfort opening - Sunset - Keyless entry - Luggage net partition - Infotainment Online (3-year subscription))
- Rear view camera
- Seats: Heated front and outer rear seats
- Windscreen, wirelessly heated

Brief expert findings

Documents submitted	At the time of the inspection, the vehicle registration certificate Part 2 (title) was available, but the vehicle registration certificate Part 1 (document) was not. (Copy)
VIN comparison	The vehicle identification number (VIN) was read from the vehicle and its conformity with the submitted documents was confirmed by the undersigned during the inspection.
Inspection	The inspection conditions were sufficient for the assessment of the vehicle. Lifting equipment and/or a pit were available for examining the vehicle.
Test drive	No test drive/shunting maneuver was carried out during the inspection of the vehicle.
Engine function test	An engine test run was performed.

Value reducing factors

No.	Component group	Description
1	Equipment	Vehicle key (Batterie) - Empty - Replace
2	Door - front right side	Door - dent(s) - Smooth repair work
3	Bonnet	Bonnet - dent(s) - Smooth repair work
4	Airbag systems	Airbag system - Functional / admissibility - Perform diagnosis
5	Door - rear right side	Door - Dent / paintcoat damage - Repair and paint

Wear and tear

No.	Component group	Description
1	Misc.	Main inspection - No evidence - No deduction
2	Vehicle glazing	Windscreen - Stone chips - No deduction

The vehicle shows signs of wear and tear commensurate with its age and use.



Order/Scope of Order

An order was placed to prepare a sales report for the described vehicle. This report includes the following:

- Description of key vehicle information
- Documentation of equipment features
(Delivery by third-party service providers)
- Documentation of damage, defects, missing parts
- Documentation of prior damage, unrepaired prior damage, repainting
- A brief visual or functional inspection of the equipment details, if possible.
(Functional testing of driver assistance systems is not included in the scope of services!)
- a photographic documentation of the vehicle

Basis for the order

This product is based on the guidelines for vehicle returns and valuations published by Alphabet Fleet GmbH. The expert makes the specific findings in each individual case objectively, within the framework of the prescribed standards, based on their own expertise.

The vehicle inspection takes place in a fully assembled, unassembled state.

Damage or defects that can only be detected during disassembly/diagnostic work or through further investigation remain within the realm of prognostic risk. An increased risk exists due to concealed defects caused by fraudulent misrepresentation and which were not identifiable by the expert.

Damage or defects resulting from normal use or wear and tear of the vehicle will be accepted in accordance with the applicable standard.

There was no explicit identification or monetary consideration of the expected features within the product.

Features which, in their nature and extent, slightly exceed normal use but do not constitute unacceptable damage, will be documented and indicated as signs of wear, if applicable.

Damage or defects that, according to the applicable standard, can no longer be attributed to normal use or wear and tear are listed under "Value Reducing Factors" in the product description.

Depending on the product specification, a monetary ID can be provided. If this takes place, the costs can be 100% d or pro rata depending on the vehicle's age and mileage.

Previous damages

No apparent prior damage that had been repaired could be found on the vehicle.



Figure 1: Diagonal front (left)



Figure 2: Diagonal front (right)



Figure 3: Diagonal rear (left)



Figure 4: Diagonal rear (right)

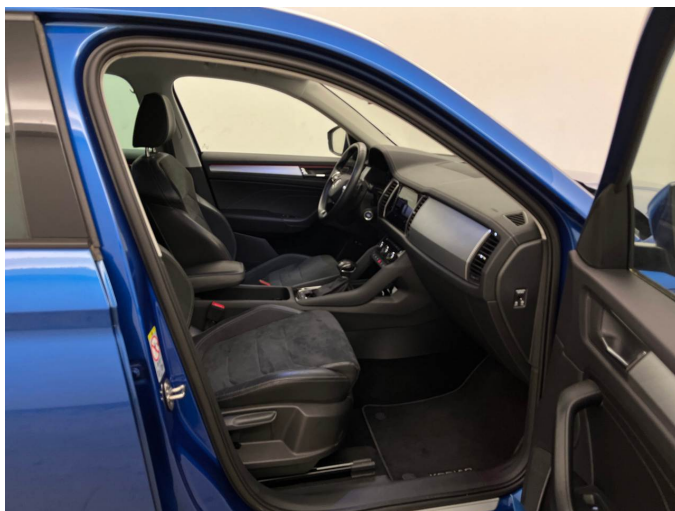


Figure 5: Interior - front



Figure 6: Interior - rear



Figure 7: Instrument cluster



Figure 8: Instrument panel



Figure 9: Interior 360° view



Figure 10: Cargo area

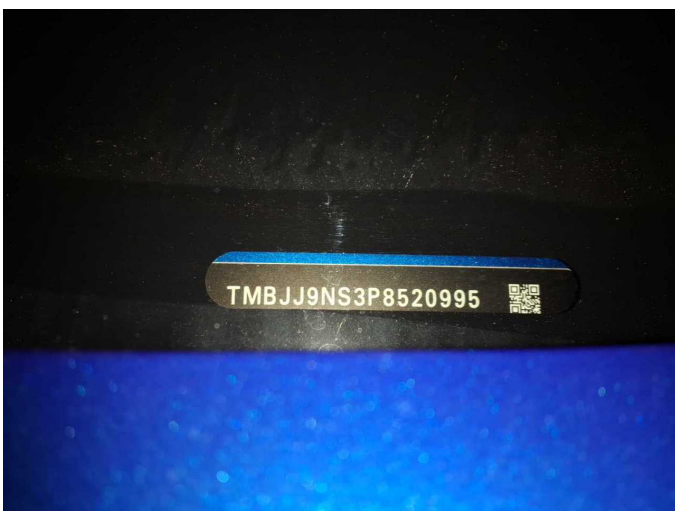


Figure 11: VIN



Figure 12: Mounted tyres

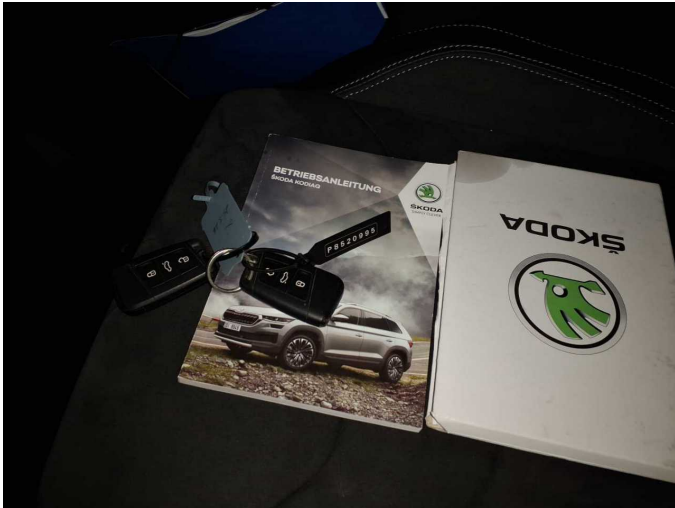


Figure 13: Documents



Figure 14: Additional tyres



Figure 15: Navigation

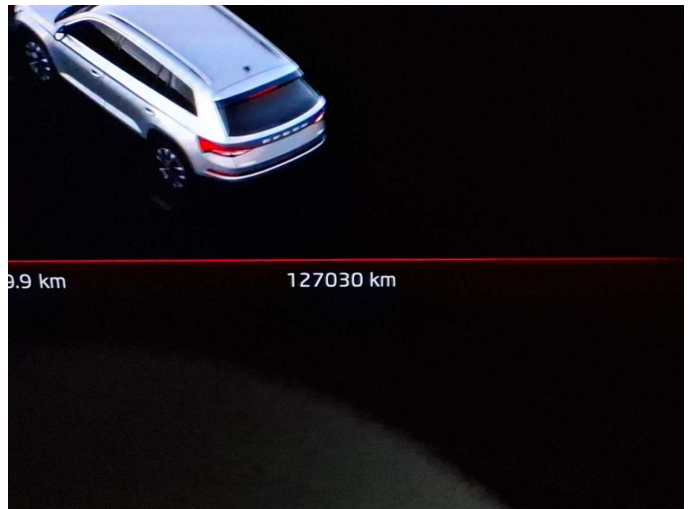


Figure 16: Misc.



Figure 17: Misc.

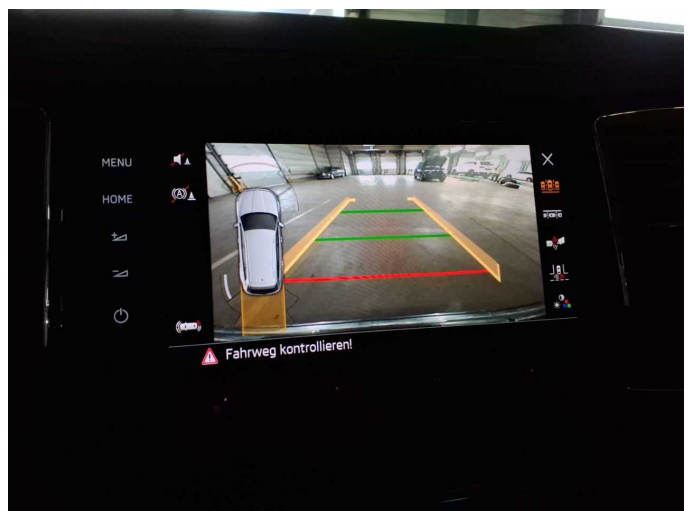


Figure 18: Misc.



Figure 19: Misc.



Figure 20: Misc.



Figure 21: Misc.



Figure 22: Misc.



Figure 23: Misc.



Figure 24: Misc.



Figure 25: Misc.



Figure 26: Misc.



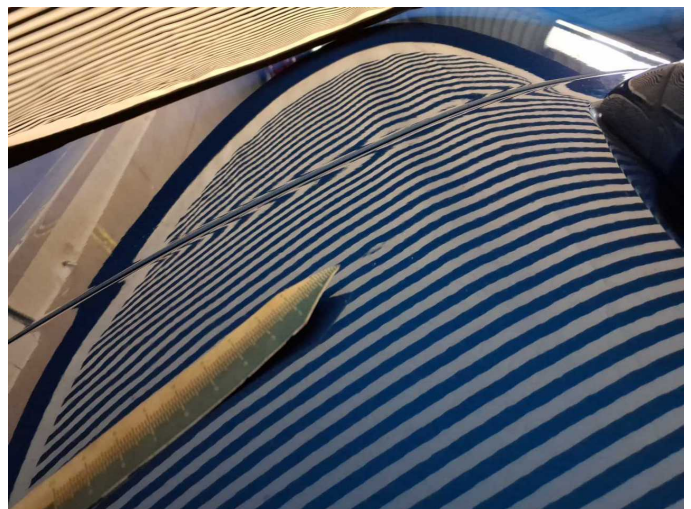
Figure 27: Misc.



Figure 28: Misc.



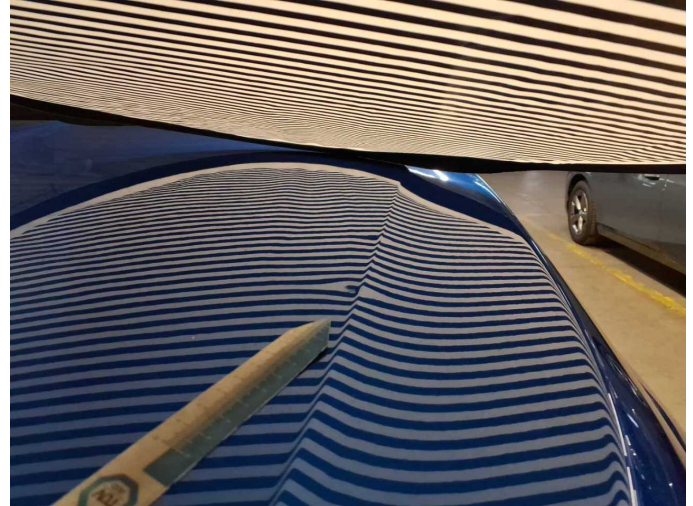
Damage 2: Door - front right side: Door - dent(s) - Smooth repair work



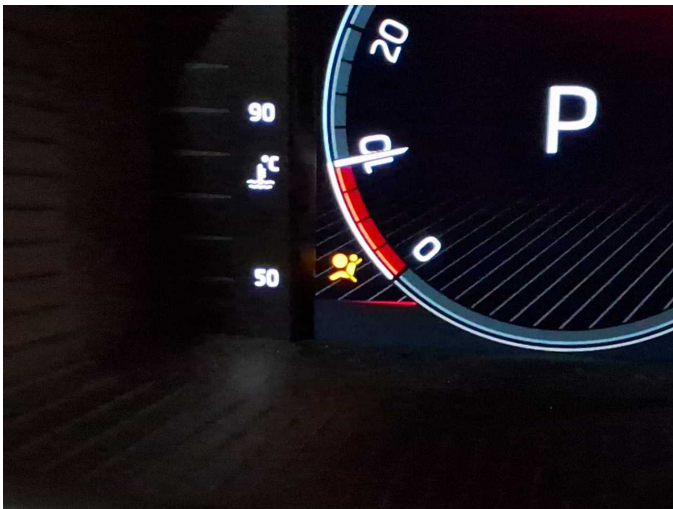
Damage 2: Door - front right side: Door - dent(s) - Smooth repair work



Damage 3: Bonnet: Bonnet - dent(s) - Smooth repair work



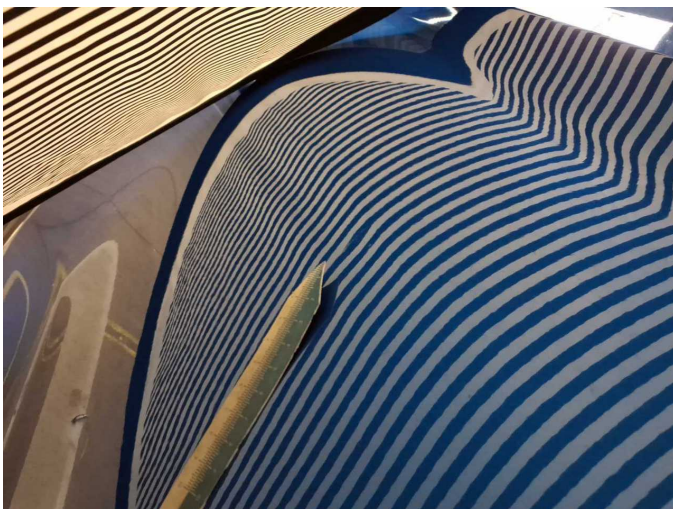
Damage 3: Bonnet: Bonnet - dent(s) - Smooth repair work



Damage 4: Airbag systems: Airbag system - Functional / admissibility - Perform diagnosis



Damage 5: Door - rear right side: Door - Dent / paintcoat damage - Repair and paint



Damage 5: Door - rear right side: Door - Dent / paintcoat damage - Repair and paint



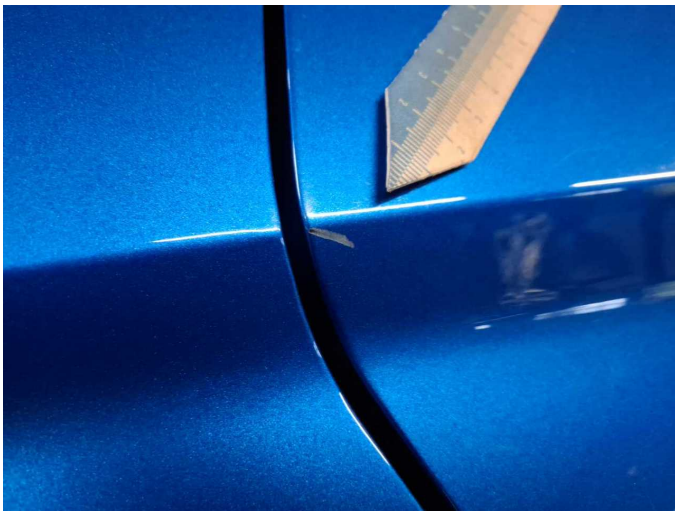
Damage 5: Door - rear right side: Door - Dent / paintcoat damage - Repair and paint



Damage 5: Door - rear right side: Door - Dent / paintcoat damage - Repair and paint



Damage 5: Door - rear right side: Door - Dent / paintcoat damage - Repair and paint



Damage 5: Door - rear right side: Door - Dent / paintcoat damage - Repair and paint



Wartungshistorie

(gemäß Auftraggeber Informationen)

Fahrgestellnummer: TMBJJ9NS3P8520995
Hersteller / Modell: SKODA SKODA Kodiaq 2.0 TDI DSG Ambition

Datum	KM-Stand	Beschreibung
29.01.2026	123.933	Getriebeöl ern/prüfen; Regelwartungsdienst; Wartung Sonstiges
30.12.2025	120.169	Motoröl b. Wartung; Ölfilter ern; Ölwechsel; Wartung Sonstiges
24.04.2025	92.664	Bremse Sonstiges; Bremsflüssigkeit; Bremsflüssigkeit ern; Bremsklötze hinten; Bremsklötze vorne; Kraftstofffilter ern; Luftfiltereinsatz ern; Motoröl b. Wartung; Ölfilter ern; Regelwartungsdienst; Systemtest/Eigendiagnose; Wartung Sonstiges
18.09.2024	60.902	Motoröl b. Wartung; Ölfilter ern; Regelwartungsdienst; Wartung Sonstiges
20.02.2024	31.613	Motoröl b. Wartung; Ölfilter ern; Regelwartungsdienst; Wartung Sonstiges