

Expertise

Protocol number: 44684306
Order No. / Reference: 26138308
Inspection date: 26 Mar 2026

Manufacturer: Skoda

Model: Superb Combi 2.0 TDI DSG Style

VIN: TMBJH7NP8N7013993



Vehicle details

Manufacturer / Type / Model / Equipment

Skoda Superb Combi 2.0 TDI DSG Style

Vehicle Identification number TMBJH7NP8N7013993

Mileage (Read) 182,695 km

First registration 29 Nov 2021

Number of holders 1

Next periodical technical inspection 01/2027

(Report on hand)

Power / Engine displacement 110 kw / 1,968 ccm

Fuel type / Cylinder Diesel / 4

Gearbox / Number of gears Automatic / 7

Type of drive Front drive

Type of vehicle Station wagon

Colour / colour code Moon-Weiß Perleffekt

Doors / Seats 5 / 5

Upholstery type Cloth

Colour of upholstery Black

Re/Import no

readiness to drive Roadworthy



Vehicle details

Maintenance booklet / proof	digital proof / incomplete	Next maintenance in	0 km
Last service on / at	10/2025 at 168,269 km		
Key is / should be	2 / 2	FZG documents	ZB#2 (B) was available (copy), ZB#1 (S) was not available.
		Letter No.	GD088376
Previous damage / Accident	None detectable	Repainting	None detectable
Inspection conditions	sufficient	Lifting equipment / pit	No
Test drive	Not performed	Engine function test	Performed
readiness to drive	Roadworthy		
Manufacturer key number/ type code number	8004 / APL 01381		
Emission standard	EURO6;WLTP;AP;PI/CI; M, N1 I	Fine dust sticker	
Permitted total weight	2,196 kg	Empty weight	

Tyres

Mounted tyres

#	Tyre size	Type of tyre	Manufacturer	Tread depth
1)	215/60 R16 98H	Winter tyres on Light alloy	Dunlop	6mm / 6mm
2)	215/60 R16 98H	Winter tyres on Light alloy	Dunlop	6mm / 6mm

Additional tyres

#	Tyre size	Type of tyre	Manufacturer	Tread depth
1)	215/55 R17 94V	Summer tyres on Light alloy	Michelin	3mm / 3mm
2)	215/55 R17 94V	Summer tyres on Light alloy	Michelin	5mm / 5mm

Replacement

Typ	Tyre size	Type of tyre	Manufacturer	Tread depth
Tirefit		Expiration date 06/2025		

Legend: Tread depth for tires on the left is in the first place, for tires on the right is in the second place on the axle in the direction of travel



Equipment

Standard equipment

- Storage compartments closed, behind the wheel arches in the trunk including cargo elements
- Airbag, driver's knee airbag
- Airbag, front side airbags
- Traction control (ASR)
- Exterior mirrors and door handles in body color
- Illuminated glove compartment
- Hydraulic brake assist (HBA)
- Roof rails, anodized
- Diesel particulate filter and SCR catalyst
- tachometer
- Dynamic Light Assistant (Masked Continuous High Beam)
- Electric tailgate opening
- Electronic transverse differential lock (XDS+)
- Headlight assistant and rain sensor
- Front radar assistant including city emergency braking function
- Cruise control including speed limiter
- Tinted windows
- Rear window wiper including windscreen washer system
- Air Care Climatronic air conditioning (2-zone)
- Trunk cover, roll-up and removable, semi-automatic
- Metal loading sill protection
- Steering wheel: 2-spoke leather steering wheel with multifunction buttons
- Matrix LED headlights
- Front center armrest with storage compartment
- Engine drag torque control (MSR)
- LED fog lights with integrated cornering lights
- Upholstery: Cloth
- Radio accessories: In-car communication
- Radio accessories: USB ports at the front (Type-C) and USB charging port (Type-A) in the center armrest
- Tire mobility set
- Heated windscreen washer nozzles
- Superb seat belts
- Seats: Adjustable lumbar supports in the front seats
- Seats: electrically adjustable driver's seat with memory function
- Seats: Height-adjustable front seats
- Seats: Rear seat backrest 60:40 split folding
- Sun visor on driver and passenger side with illuminated make-up mirror
- 12-V socket in the center console front and rear
- Chrome-plated elements
- Lashing eyes in the trunk
- Central locking with radio remote control
- Shelves
- Airbag, driver and switchable passenger airbag
- Airbag, head airbags
- Anti-lock braking system (ABS)
- Exterior mirrors electrically adjustable and heated
- Exterior mirrors, electrically folding
- Hill start assist
- Headliner Gray
- Decorative inlay Dark Brushed
- Digital instrument cluster (Virtual Cockpit) 10.2"
- Third brake light
- Easy Start (start-stop button instead of ignition lock)
- Electronic parking brake including auto-hold function
- Electronic Stabilization Control (ESC)
- Electric windows front and rear, including anti-pinch protection and child safety lock
- Front footwell lighting
- Transmission: 7-speed direct shift gearbox (DSG)
- Heated rear window
- ISOFIX preparation on the outer rear seats, including top tether
- Headrests height adjustable front and rear
- Remote release of the rear seat backrests in the trunk
- Steering wheel: height and length adjustable
- Reading lights at the front and rear of the headliner
- Rear center armrest with cup holders and through-loading option
- Multi-collision brake
- Rear parking sensors
- Radio accessories: Digital radio reception DAB+
- Radio accessories: SmartLink+
- Radio accessories: Wireless SmartLink for Apple CarPlay
- Tire pressure monitoring
- Wheels: 17" Drakon alloy wheels
- Power steering, electromechanical
- Seats: Heated front seats
- Seats: Electrically adjustable front seats, driver's seat with memory function
- Seats: Electric operation of the front passenger seat from the rear
- SKODA Care Connect
- Start/stop system including brake energy recuperation
- 12-V socket in the trunk
- Telephone: Convenient Bluetooth hands-free phone system
- Immobiliser

Extra equipment



- Package: Business Amundsen (DSG) (Amundsen navigation system - voice control - Wi-Fi hotspot - Wireless Smartlink for Apple CarPlay - 8" capacitive touchscreen in glass design - Phonebox - Traveller assistance system (traffic sign recognition, predictive lane keeping assist pACC, adaptive lane keeping assist, emergency and traffic jam assist, capacitive steering wheel with hands-off detection) - 230 V socket and 3 USB ports, tablet holder - Sunset - Infotainment Online (3-year subscription))
- Steering wheel: Heated steering wheel (2 spokes) (with paddle shifters)
- Finish: pearl effect
- Heated windshield
- Kessy, keyless entry and start-stop system
- Lane keeping/changing/exiting/traffic jam assistant
- Multifunctional storage under the trunk cover
- Network program in the trunk
- Parking sensors front and rear
- Rear view camera with washer nozzle
- Traffic sign recognition
- Waste bin for the inside door

Brief expert findings

Documents submitted	At the time of the inspection, the vehicle registration certificate Part 2 (title) was available, but the vehicle registration certificate Part 1 (document) was not. (Copy)
VIN comparison	The vehicle identification number (VIN) was read from the vehicle and its conformity with the submitted documents was confirmed by the undersigned during the inspection.
Inspection	The inspection conditions were sufficient for the assessment of the vehicle. No lifting equipment or pit was available for examining the vehicle. Therefore, inspection of the vehicle's underside was only possible to a limited extent.
Test drive	No test drive/shunting maneuver was carried out during the inspection of the vehicle.
Engine function test	An engine test run was performed.
readiness to drive	The vehicle was roadworthy at the time of inspection.

Value reducing factors

No.	Component group	Description
1	Misc.	Inspection / maintenance (Unvollständig) - No evidence - No deduction
2	Equipment	Tirefit filler - Expired - Replace
3	Front bumper	Air-inlet grille - Malposition - Un- / install
4	Rear bumper	Rear bumper (Ladekante) - Scratched - Smart repair
5	Misc.	Inspection / maintenance (Inspektion) - Due - Perform
6	Sill - left side	Sill - Scratched - Repair and paint
7	Front bumper	Front bumper - Scratched - Repair and paint

Wear and tear

No.	Component group	Description
1	Vehicle glazing	Windscreen - Stone chips - No deduction
2	Bonnet	Bonnet - Stone chips - No deduction
3	Interior	Interior - Scratch(es) - No deduction
4	Trim / covers	Boot lid - interior trim - Scratch(es) - No deduction

The vehicle shows signs of wear commensurate with its age and use.



Order/Scope of order

The order was placed to prepare a sales report for the vehicle described. This includes the following:

- Description of core relevant information about the vehicle
- Documentation of equipment features
(Delivery by third-party service providers)
- Documentation of damage, defects, missing parts
- Documentation of previous damage, unrepaired previous damage, repainting
- a brief visual or functional inspection of the equipment details if possible.
(Functional tests of driver assistance systems are not included in the scope of services!)
- a photo documentation of the vehicle

Basis for the order

This product is based on the Alphabet Fuhrpark GmbH guidelines for vehicle returns and valuations. The expert makes the explicit findings in each individual case objectively within the framework of the specified standards based on his or her own expertise.

The vehicle inspection takes place in a disassembled state.

Damage or defects that can only be detected during disassembly/diagnosis work or through advanced knowledge remain within the scope of the prognosis risk. An extended risk exists for concealed defects caused by fraudulent deception and not identifiable by the expert.

Damage or defects resulting from normal use or wear and tear of the vehicle will be accepted according to the applicable standard.

There was no explicit identification or monetary consideration of the expected features within the product.

Features which in their nature and severity slightly exceed normal use but do not constitute unacceptable damage will be documented and identified under signs of use if necessary.

Damage or defects that can no longer be attributed to normal use or wear and tear according to the underlying standard are listed in the product under value-reducing factors.

Depending on the product specification, a monetary ID can be provided. If this takes place, the costs can be 100% d or pro rata depending on the vehicle's age and mileage.

Previous damages

No apparent prior damage that had been repaired could be found on the vehicle.

Comments

- Für den montierten Radsatz wurde kein Nachweis erbracht.
- Winterradsatz ist kein Bestandteil des Auslieferungsumfangs.



Figure 1: Diagonal front (left)



Figure 2: Diagonal front (right)



Figure 3: Diagonal rear (left)



Figure 4: Diagonal rear (right)

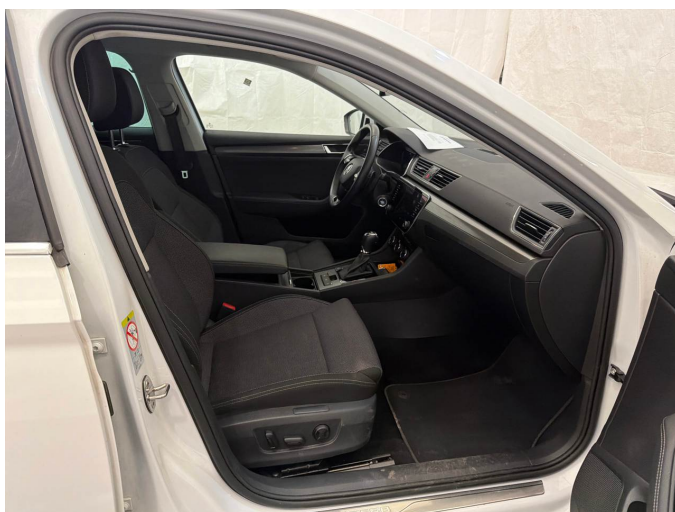


Figure 5: Interior - front



Figure 6: Interior - rear



Figure 7: Instrument cluster



Figure 8: Instrument panel



Figure 9: Interior 360° view



Figure 10: Cargo area



Figure 11: VIN



Figure 12: Mounted tyres

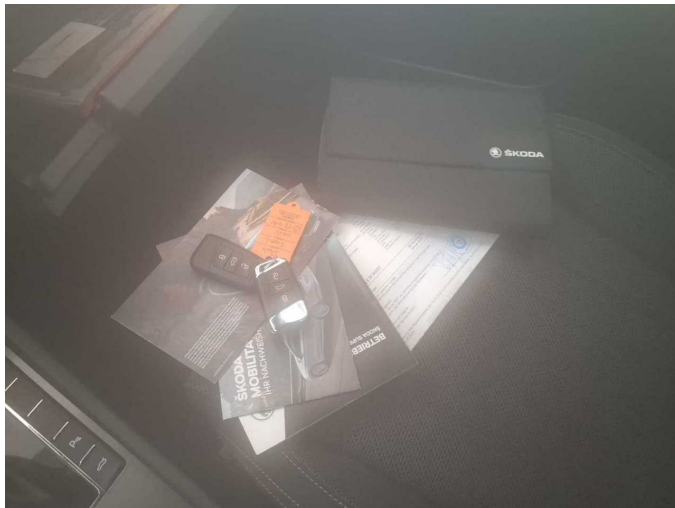


Figure 13: Documents

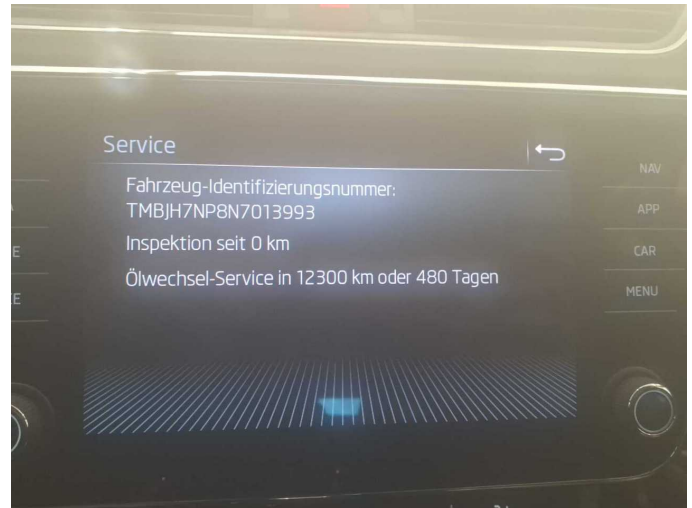


Figure 14: Documents

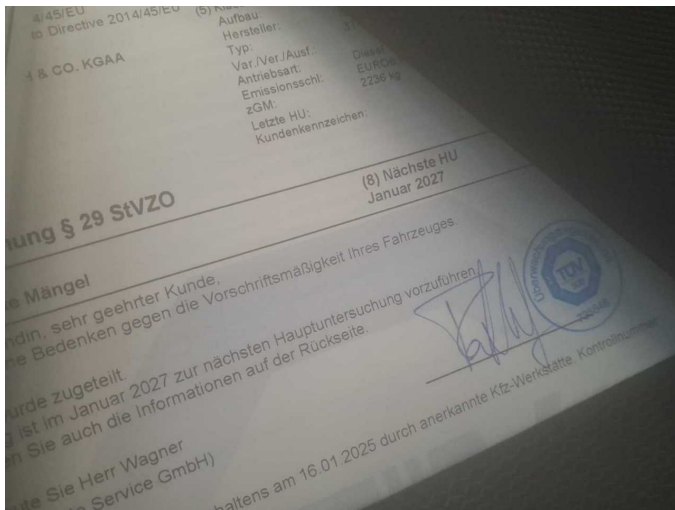


Figure 15: Documents



Figure 16: Additional tyres



Figure 17: Navigation



Figure 18: Misc.

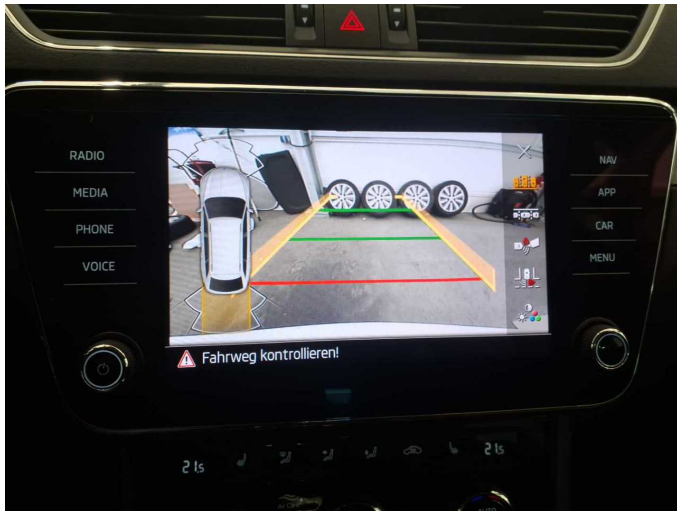


Figure 19: Misc.



Figure 20: Misc.

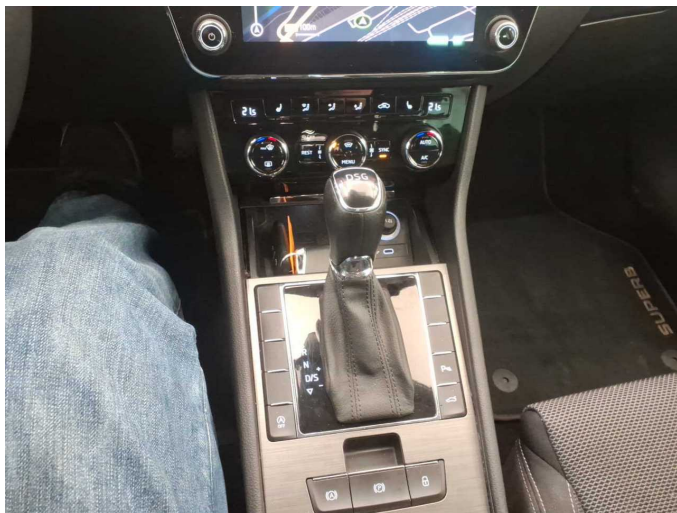


Figure 21: Misc.



Figure 22: Misc.



Figure 23: Misc.



Figure 24: Misc.



Figure 25: Misc.



Figure 26: Misc.



Figure 27: Misc.



Figure 28: Misc.

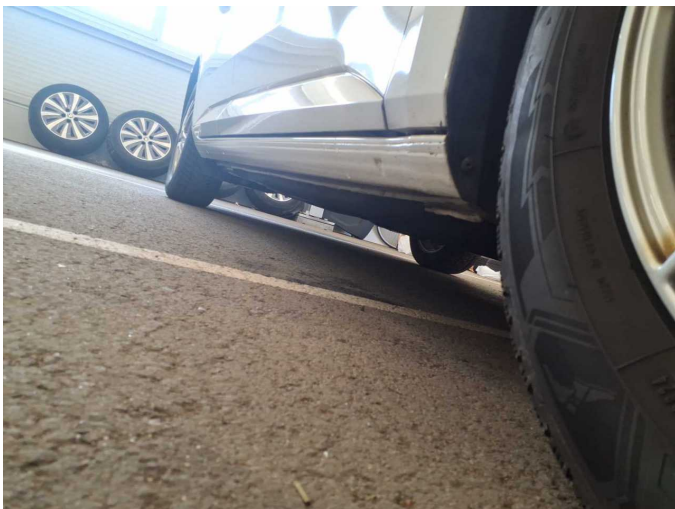


Figure 29: Misc.



Figure 30: Misc.



Figure 31: Misc.



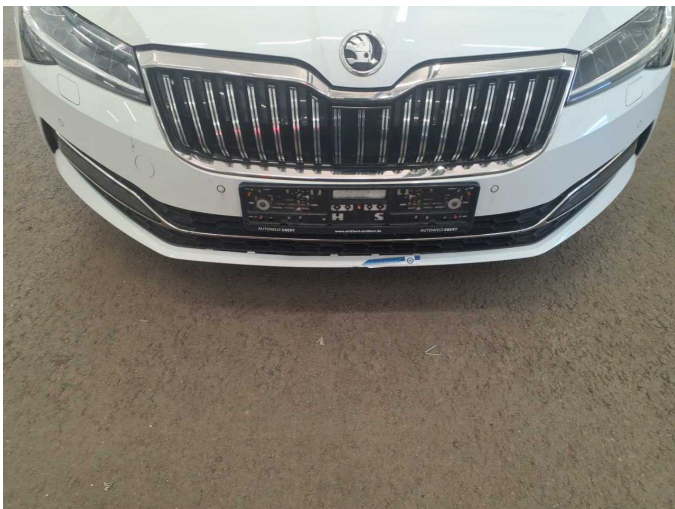
Figure 32: Misc.



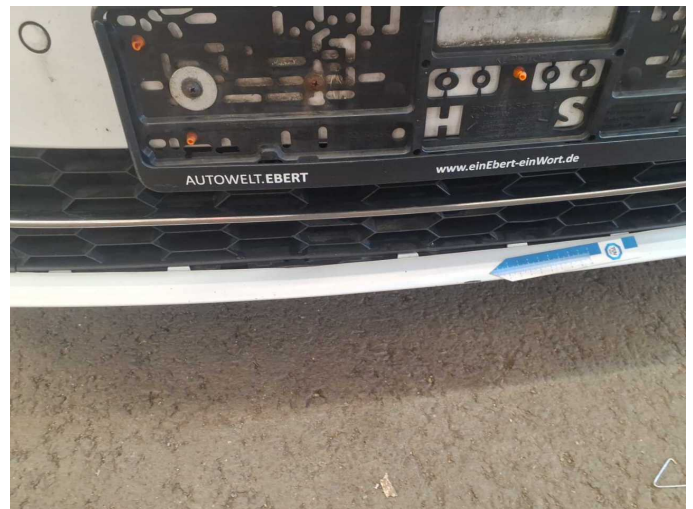
Figure 33: Misc.



Damage 2: Equipment: Tirefit filler - Expired - Replace



Damage 3: Front bumper: Air-inlet grille - Malposition - Un- / install



Damage 3: Front bumper: Air-inlet grille - Malposition - Un- / install



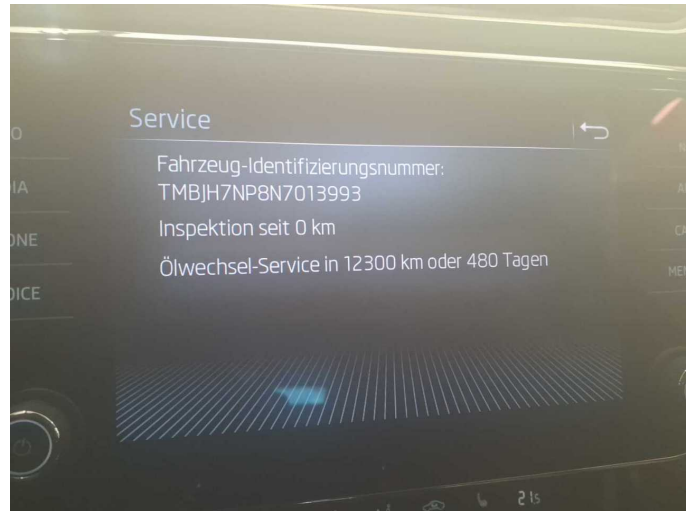
Damage 4: Rear bumper: Rear bumper (Ladekante) - Scratched - Smart repair



Damage 4: Rear bumper: Rear bumper (Ladekante) - Scratched - Smart repair



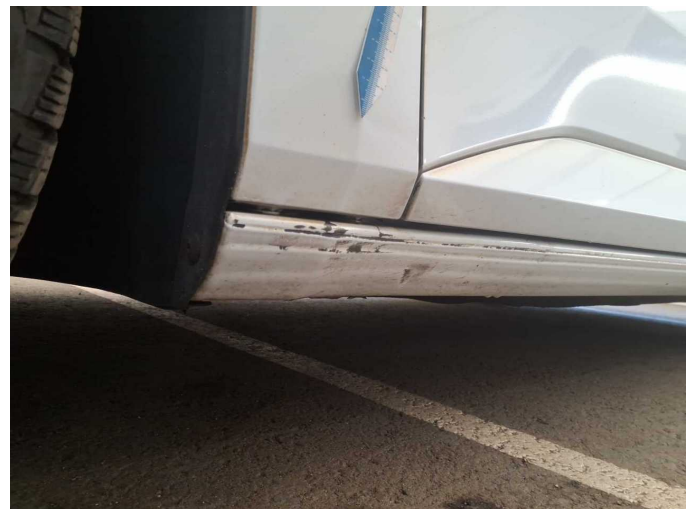
Damage 4: Rear bumper: Rear bumper (Ladekante) - Scratched - Smart repair



Damage 5: Misc.: Inspection / maintenance (Inspektion) - Due - Perform



Damage 6: Sill - left side: Sill - Scratched - Repair and paint



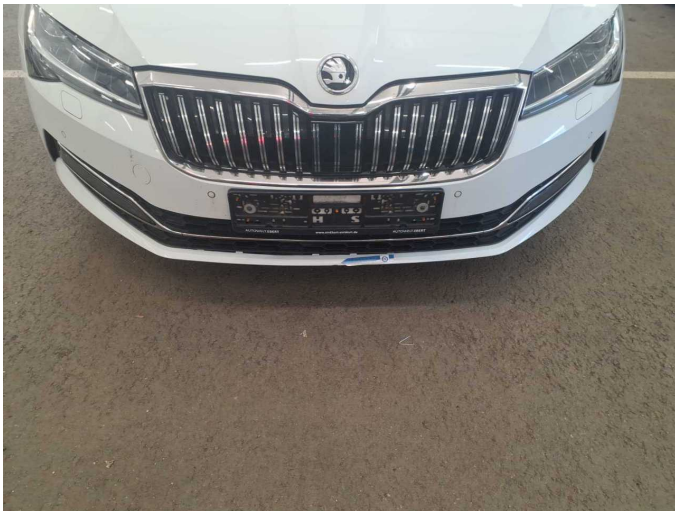
Damage 6: Sill - left side: Sill - Scratched - Repair and paint



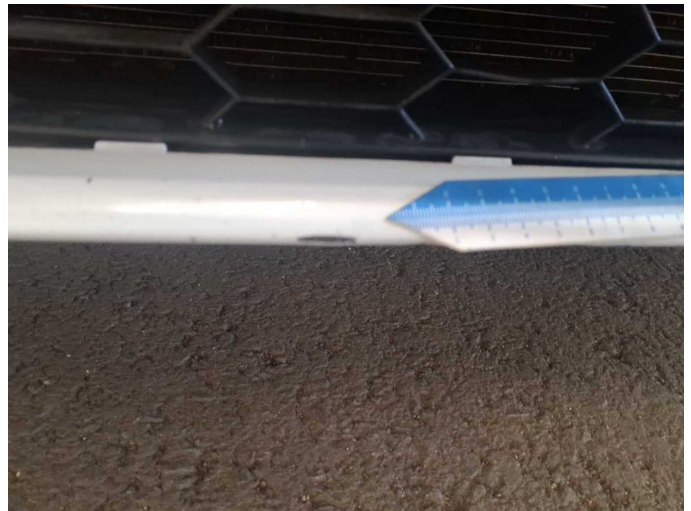
Damage 7: Front bumper: Front bumper - Scratched - Repair and paint



Damage 7: Front bumper: Front bumper - Scratched - Repair and paint



Damage 7: Front bumper: Front bumper - Scratched - Repair and paint



Damage 7: Front bumper: Front bumper - Scratched - Repair and paint



Wartungshistorie

(gemäß Auftraggeber Informationen)

Fahrgestellnummer: TMBJH7NP8N7013993
Hersteller / Modell: SKODA SKODA Superb Combi 2.0 TDI DSG Style

Datum	KM-Stand	Beschreibung
18.12.2025	175.134	Batterie ern
08.10.2025	168.269	Bremse Sonstiges; Bremsklötze hinten; Bremsklötze vorne; Bremsscheiben hinten; Bremsscheiben vorne; Motoröl b. Wartung; Ölfilter ern; Ölwechsel; Reparatur Sonstiges; Systemtest/Eigendiagnose; Systemtest/Eigendiagnose; Wartung Sonstiges
06.06.2025	152.676	Regelwartungsdienst; Wartung Sonstiges
04.03.2025	140.312	Motoröl b. Wartung; Ölfilter ern; Ölwechsel; Wartung Sonstiges
22.01.2025	134.991	AU
17.10.2024	121.095	Getriebeöl ern/prüfen; Luftfiltereinsatz ern; Regelwartungsdienst; Wartung Sonstiges
22.08.2024	113.207	Motoröl b. Wartung; Ölfilter ern; Ölwechsel; Wartung Sonstiges
27.02.2024	90.625	Bremse Sonstiges; Bremsklötze vorne; Bremsscheiben vorne; Kraftstofffilter ern; Regelwartungsdienst; Systemtest/Eigendiagnose; Wartung Sonstiges
23.01.2024	85.017	Bremse Sonstiges; Bremsflüssigkeit; Bremsflüssigkeit ern; Bremsklötze hinten; Bremsscheiben hinten; Motoröl b. Wartung; Ölfilter ern; Ölwechsel; Wartung Sonstiges
08.06.2023	60.223	Motoröl b. Wartung; Regelwartungsdienst
08.11.2022	32.130	Motoröl b. Wartung; Regelwartungsdienst