

Expertise

Protocol number: 45586391
Order No. / Reference: 26344172
Inspection date: 21 May 2026

Manufacturer: Volkswagen

Model: Passat Variant 2.0 TDI SCR DSG Business

VIN: WVVZZZ3CZPE036517



Vehicle details

Manufacturer / Type / Model / Equipment

Volkswagen Passat Variant 2.0 TDI SCR DSG Business

Vehicle Identification number WVVZZZ3CZPE036517

Mileage (Read) 142,907 km

First registration 8 Mar 2023

Number of holders 1

Power / Engine displacement 110 kw / 1,968 ccm

Fuel type / Cylinder Diesel / 4

Gearbox / Number of gears Automatic / 7

Type of drive Front drive

Type of vehicle Station wagon

Colour / colour code Scale silver-metallic (C7A)

Doors / Seats 5 / 5

Upholstery type Cloth

Colour of upholstery Black



Vehicle details			
Maintenance booklet / proof	digital proof / complete	Next maintenance in	29,800 km
Last service on / at	03/2026 at 142,699 km		
Key is / should be	2 / 2	FZG documents	ZB#2 (B) was available (copy), ZB#1 (S) was not available.
		Letter No.	GS354935
Previous damage / Accident	Detectable	Repainting	None detectable
Inspection conditions	sufficient	Lifting equipment / pit	yes
Test drive	Not performed	Engine function test	Performed
Manufacturer key number/ type code number	0603 / BQS 04363		
Emission standard	EURO6;WLTP;AP;PI/CI; M, N1 I	fine dust sticker	
Permitted total weight	2,200 kg	Empty weight	

Tyres

Mounted tyres				
#	Tyre size	Type of tyre	Manufacturer	Tread depth
1)	215/60 R16 95H	Winter tyres on Steel rim with wheel cover	Dunlop	4mm / 4mm
2)	215/60 R16 95H	Winter tyres on Steel rim with wheel cover	Dunlop	5mm / 5mm
Additional tyres				
#	Tyre size	Type of tyre	Manufacturer	Tread depth
1)	215/60 R16 99V	Summer tyres on Light alloy	Pirelli	4mm / 4mm
2)	215/60 R16 99V	Summer tyres on Light alloy	Pirelli	5mm / 5mm
Replacement				
Typ	Tyre size	Type of tyre	Manufacturer	Tread depth
	Tirefit	Expiration date 11/2026		

Legend: Tread depth information for the left tire is listed first, for the right tire it is listed second on the axle in the direction of travel.



Equipment

Standard equipment

- Airbag for driver and front passenger
- Anti-lock braking system (ABS)
- Adaptive Cruise Control (ACC) "stop & go", including speed limiter
- Cup holders (2) front
- third brake light
- Headliner in Mistral Grey
- Diesel particulate filter
- Parking aid - warning signals for obstacles in the front and rear area
- Electronic stability program and electromechanical brake booster
- Windscreen made of laminated safety glass, heat and sound insulating
- Transmission: 7-speed DSG
- rear window wiper
- ISOFIX mounting points
- Rear headrests (3)
- Paint finish: Solid
- LED taillights
- Steering wheel: Multifunction steering wheel in leather, with paddle shifters
- "Premium" multifunction display with multicolor screen
- Fatigue detection
- Non-smoking version
- Emergency call service
- Package: Light and Sight Package "Plus"
- Proactive occupant protection system in conjunction with "Front Assist"
- Tire pressure monitoring system (passive)
- Wheels: Tire Mobility Set
- Gearshift knob in leather
- Keyless start system without safe locking
- Seat belts: Three-point automatic seat belt
- Seats: Lumbar support in the front
- Lane keeping assistant "Lane Assist"
- 12V power outlet on the rear of the center console
- Textile floor mats
- Warning tone and light for unfastened seat belts front and rear
- Airbag, head airbag system for front and rear passengers
- App-Connect
- Electrically adjustable and heated exterior mirrors, ambient lighting
- Hill start assist
- Chrome trim on the side windows
- black roof rails
- Tachometer
- Entry/warning lights in LED technology in the front doors
- Electronic parking brake including auto-hold function
- Automatic headlight control
- Remote release for luggage compartment lid
- Pedestrian detection
- Adjustable luggage compartment floor
- Rear window heated
- Interior lights with delayed shut-off and dimming function
- Air conditioning
- Front headrests
- LED fog lights and cornering lights
- LED headlights with daytime running lights
- Headlight range control
- Front center armrest, height and length adjustable, with storage box
- Mesh partition
- Emergency braking assistant "Front Assist" (for automatic distance control ACC up to 210 km/h)
- Upholstery: "Business" fabric
- Radio "Composition"
- Radio accessories: Digital radio reception DAB+
- Wheels: 4 light alloy wheels "Sepang" 6.5 J x 16
- Rear bench seat, undivided, backrest asymmetrically split and foldable, with center armrest
- Power steering
- Seats: Comfort seats in the front
- Seats: Front seats are height-adjustable
- Start-stop system
- Telephone interface
- First aid kit, warning triangle and high-visibility vest
- Electronic immobilizer
- Central locking with remote control



Extra equipment

- Towbar, foldable (with electric release)
- Chassis: Rear suspension with fully automatic level control
- High beam control "Light Assist" (automatically switches on the high beam in darkness from 65 km/h - detects vehicles ahead and oncoming vehicles and automatically dims the headlights before they are blinded)
- Paint finish: Metallic
- Steering wheel: Multifunction leather steering wheel, heated, with paddle shifters
- Package: "Business Premium" package incl. navigation (from Business trim level) (2 USB-C ports in the front, USB-C charging socket in the rear, 230V socket, App-Connect incl. wireless, Apple CarPlay, Android Auto, "Travel Assist" driver assistance system and "Lane Assist" lane keeping assist system, Air Care Climatronic with 3-zone temperature control, active combination filter and rear controls, lumbar support in the front, electric on the driver's side, massage function on the driver's side, "Rear View" reversing camera, heated windshield washer nozzles, Comfort telephone interface, inductive charging function, heated front seats)
- Panoramic tilt/slide sunroof (with panoramic roof at the rear)
- Proactive occupant protection system and lane change assistant "Side Assist" (Proactive occupant protection system in conjunction with "Front Assist" and "Side Assist" - lane change assistant "Side Assist" and parking assistant)
- Voice control
- Exterior mirrors with ambient lighting and passenger-side mirror lowering function (foldable and heated - dimming on the driver's side)
- Removable luggage compartment protective mat (back of the rear seat backrest with black rubber coating)
- Tailgate with electric opening and closing, electric opening for luggage compartment cover (extendable and removable luggage compartment cover with electric opening - tailgate with electric opening and closing)
- Navigation system "Discover Pro" incl. "Streaming & Internet" (4x20 Watt App-Con. Wireless Digital Cockpit. Operation with proximity sensor. Dual tuner with phase differentiation. DAB. Vehicle menu. Speed. Volume adjustment. Gestures. 32 GB SSD hard drive. Map 2D display. Tone control. 3-way TFT display with touchscreen. MP3. Navigation for Europe. Voice control. Telephone contact. Address. Telephone interface. "Comfort" with inductive charging. 2 USB iPod/iPhone. Traffic sign recognition. "We Connect Plus" incl. "We Connect". Dynamic route guidance. RDS. TMC tuner. Mobile key pre-activation, vehicle via smartphone.)
- Package: Ambient lighting "Plus" (multicoloured ambient lighting - LED entry/warning lights in all doors - interior lights with switch-off delay and dimming function, 2 LED reading lights each in the front and rear)
- Radio accessories: "Harman Kardon" sound system (10+1 speakers, 700 watts total power, digital 16-channel amplifier, subwoofer)
- Rear side windows and rear window tinted

Brief expert findings

Documents submitted	At the time of the inspection, the vehicle registration certificate Part 2 (title) was available, but the vehicle registration certificate Part 1 (document) was not. (Copy)
VIN comparison	The vehicle identification number (VIN) was read from the vehicle and its conformity with the submitted documents was confirmed by the undersigned during the inspection.
Inspection	The inspection conditions were sufficient for the assessment of the vehicle. Lifting equipment and/or a pit were available for examining the vehicle.
Test drive	No test drive/shunting maneuver was carried out during the inspection of the vehicle.
Engine function test	An engine test run was performed. This is due to the following reason.: i.O.

Value reducing factors

No.	Component group	Description
1	Boot lid / rear door	Boot lid - Glued / labelled - De-glue / neutralise
2	Mudguard - right side	Mudguard - right side - Stone chips - Smart repair
3	Wheel / tyres	Tyre - right (einseitig abgefahren) - Does not meet the leasing specifications - Replace
4	Roof	Roof - Corrosion - Smart repair
5	Rear bumper	Rear bumper (Farb unterschied) - Unprofessionally repaired - Paint
6	Front bumper	Front bumper - Scratched - Paint
7	Bonnet	Bonnet - Stone chips - Paint



Wear and tear

No.	Component group	Description
1	Misc.	Main inspection - No evidence - No deduction

The vehicle shows signs of wear and tear commensurate with its age and use.

Previous damages

No.	Previous damage	Extent of damage (Net)
1	Front, Provided by user / customer, from 3 Sept 2025	2.033,58 €
2	Rear, Provided by user / customer, from 15 Apr 2024	2.358,77 €

Accident damages

No.	Accident
1	Side right

Order/Scope of Order

An order was placed to prepare a sales report for the described vehicle. This report includes the following:

- Description of key vehicle information
- Documentation of equipment features
(*Delivery by third-party service providers*)
- Documentation of damage, defects, missing parts
- Documentation of prior damage, unrepaired prior damage, repainting
- A brief visual or functional inspection of the equipment details, if possible.
(*Functional testing of driver assistance systems is not included in the scope of services!*)
- a photographic documentation of the vehicle

Basis for the order

This product is based on the guidelines for vehicle returns and valuations published by Alphabet Fleet GmbH. The expert makes the specific findings in each individual case objectively, within the framework of the prescribed standards, based on their own expertise.

The vehicle inspection takes place in a fully assembled, unassembled state.

Damage or defects that can only be detected during disassembly/diagnostic work or through further investigation remain within the realm of prognostic risk. An increased risk exists due to concealed defects caused by fraudulent misrepresentation and which were not identifiable by the expert.

Damage or defects resulting from normal use or wear and tear of the vehicle will be accepted in accordance with the applicable standard.

There was no explicit identification or monetary consideration of the expected features within the product.

Features which, in their nature and extent, slightly exceed normal use but do not constitute unacceptable damage, will be documented and indicated as signs of wear, if applicable.

Damage or defects that, according to the applicable standard, can no longer be attributed to normal use or wear and tear are listed under "Value Reducing Factors" in the product description.

Depending on the product specification, a monetary ID can be provided. If this takes place, the costs can be 100% d or pro rata depending on the vehicle's age and mileage.

Previous damages

Non-repaired previous damages were found at the vehicle. The necessary repair costs are listed in the expert report or if necessary, are listed in detail in a separately enclosed repair cost calculation.



Comments

Fahrzeug weist rundum erhöhte lackwerte auf. 170-330

Der kalkulierte Unfall wurde nach bestem Wissen und Gewissen unter eingeschränkten Besichtigungsbedingung im demontagefreien Zustand erstellt. Es können aufgrund verdeckter Beschädigung, Mehrkosten und somit Abweichung der für den Unfall ausgewiesenen Reparaturkosten nicht ausgeschlossen werden.

ALPHABET



Figure 1: Diagonal front (left)

ALPHABET



Figure 2: Diagonal front (right)

ALPHABET



Figure 3: Diagonal rear (left)

ALPHABET



Figure 4: Diagonal rear (right)



Figure 5: Interior - front

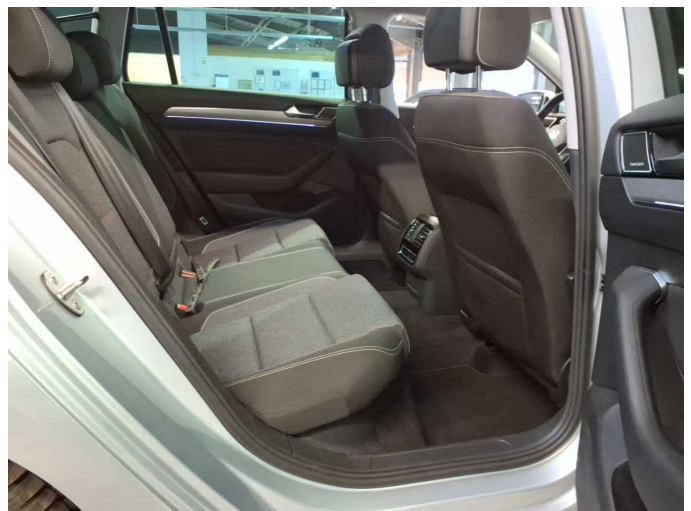


Figure 6: Interior - rear



Figure 7: Instrument cluster



Figure 8: Instrument panel



Figure 9: Interior 360° view



Figure 10: Cargo area

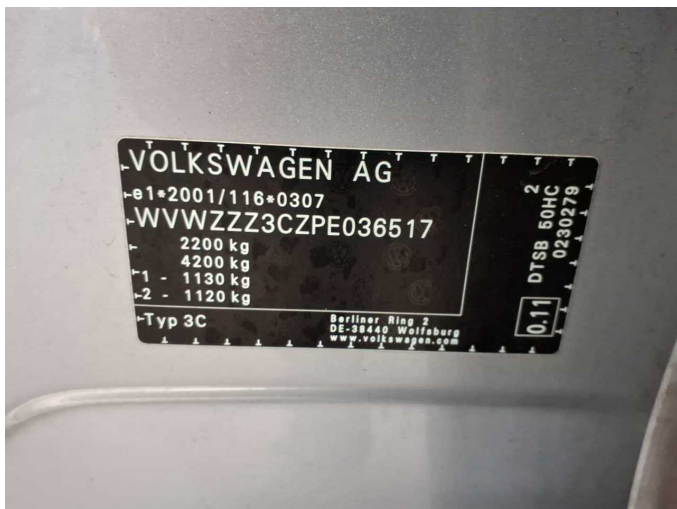


Figure 11: VIN



Figure 12: Mounted tyres



Figure 13: Documents



Figure 14: Additional tyres



Figure 15: Navigation

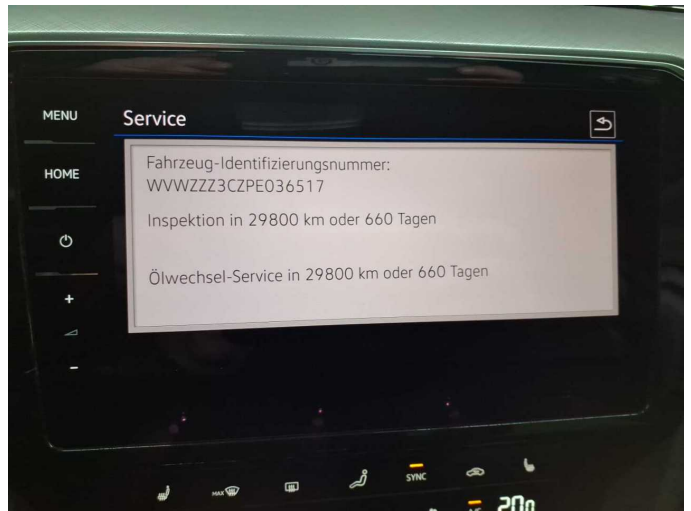


Figure 16: Misc.



Figure 17: Misc.



Figure 18: Misc.



Figure 19: Misc.



Figure 20: Misc.



Figure 21: Misc.



Figure 22: Misc.

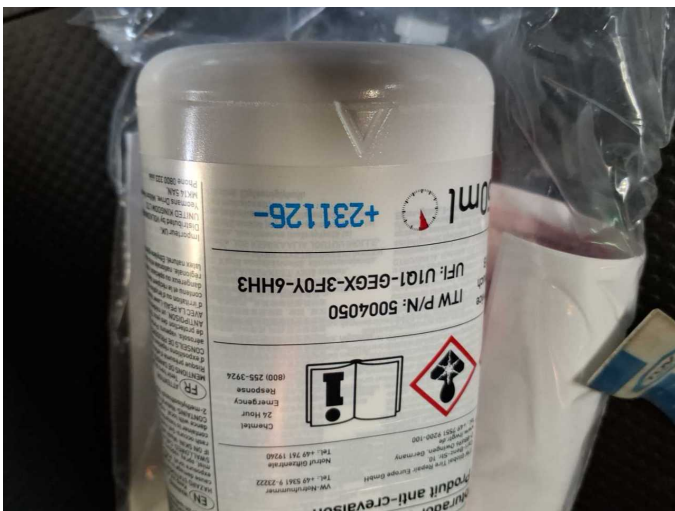


Figure 23: Misc.

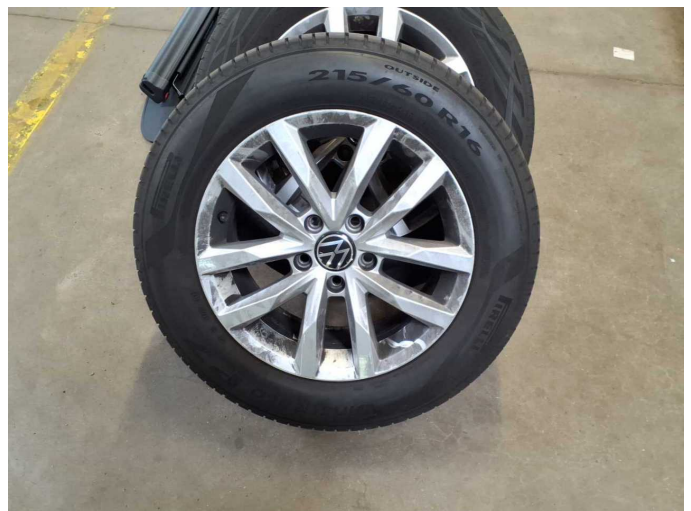


Figure 24: Misc.



Figure 25: Misc.



Figure 26: Misc.



Figure 27: Misc.

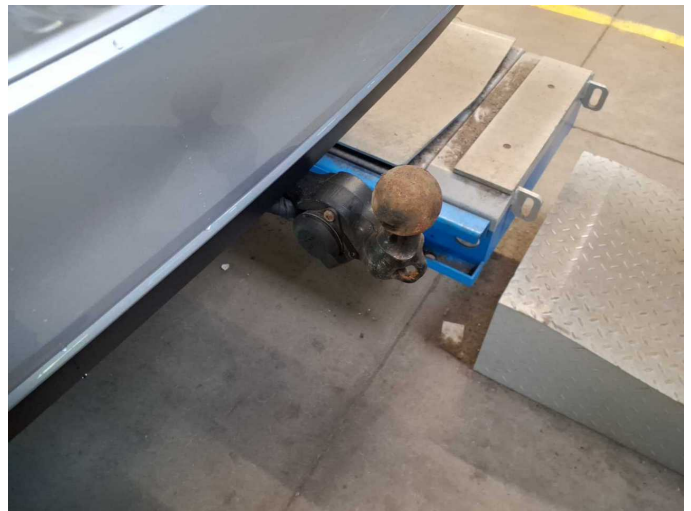


Figure 28: Misc.



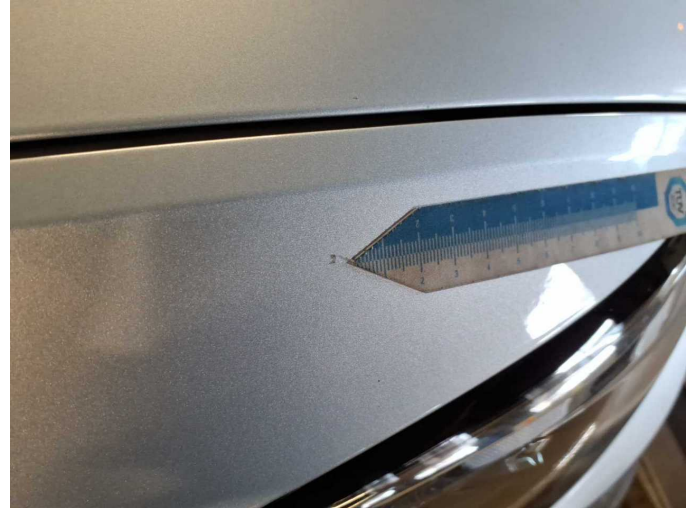
Figure 29: Misc.



Damage 1: Boot lid / rear door: Boot lid - Glued / labelled - De-glue / neutralise



Damage 2: Mudguard - right side: Mudguard - right side - Stone chips - Smart repair



Damage 2: Mudguard - right side: Mudguard - right side - Stone chips - Smart repair



Damage 3: Wheel / tyres: Tyre - right (einseitig abgefahren) - Does not meet the leasing specifications - Replace



Damage 3: Wheel / tyres: Tyre - right (einseitig abgefahren) - Does not meet the leasing specifications - Replace



Damage 3: Wheel / tyres: Tyre - right (einseitig abgefahren) - Does not meet the leasing specifications - Replace



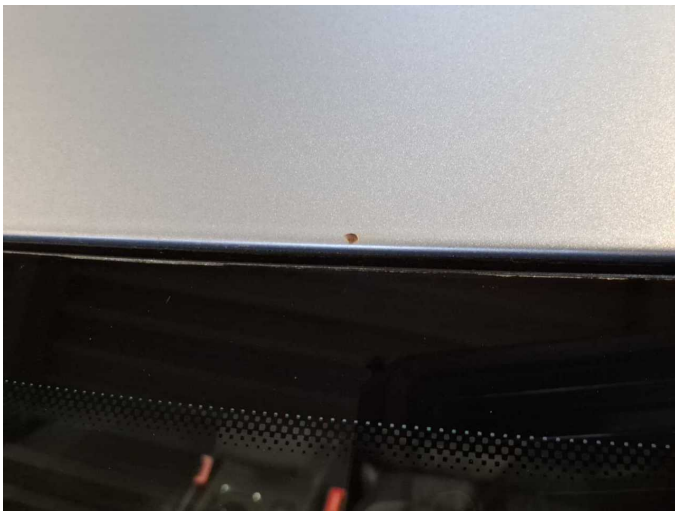
Damage 3: Wheel / tyres: Tyre - right (einseitig abgefahren) - Does not meet the leasing specifications - Replace



Damage 4: Roof: Roof - Corrosion - Smart repair



Damage 4: Roof: Roof - Corrosion - Smart repair



Damage 4: Roof: Roof - Corrosion - Smart repair



Damage 4: Roof: Roof - Corrosion - Smart repair



Damage 5: Rear bumper: Rear bumper (Farb unterschied) - Unprofessionally repaired - Paint



Damage 5: Rear bumper: Rear bumper (Farb unterschied) - Unprofessionally repaired - Paint



Damage 6: Front bumper: Front bumper - Scratched - Paint



Damage 6: Front bumper: Front bumper - Scratched - Paint



Damage 7: Bonnet: Bonnet - Stone chips - Paint



Damage 7: Bonnet: Bonnet - Stone chips - Paint



Damage 7: Bonnet: Bonnet - Stone chips - Paint



Damage 7: Bonnet: Bonnet - Stone chips - Paint



Damage 7: Bonnet: Bonnet - Stone chips - Paint



Accident 1: Side right



Accident 1: Side right



Wartungshistorie

(gemäß Auftraggeber Informationen)

Fahrgestellnummer: WVVZZZ3CZPE036517

Hersteller / Modell: VOLKSWAGEN VW Passat Variant 2.0 TDI SCR DSG Business

Datum	KM-Stand	Beschreibung
12.03.2026	142.699	AU; Motoröl b. Wartung; Ölfilter ern; Regelwartungsdienst; Wartung Sonstiges
30.12.2025	132.861	Bremse Sonstiges; Bremsklötze hinten; Bremsklötze vorne; Bremsscheiben + Klötze h; Bremsscheiben + Klötze v; Bremsscheiben hinten; Bremsscheiben vorne
15.08.2025	116.834	Getriebeöl ern/prüfen; Motoröl b. Wartung; Ölfilter ern; Regelwartungsdienst; Wartung Sonstiges
03.02.2025	89.984	Bremsflüssigkeit; Bremsflüssigkeit ern; Kraftstofffilter ern; Luftfiltereinsatz ern; Motoröl b. Wartung; Ölfilter ern; Regelwartungsdienst; Systemtest/ Eigendiagnose; Wartung Sonstiges
08.07.2024	61.232	Bremse Sonstiges; Bremsklötze hinten; Bremsscheiben hinten; Bremsscheiben vorne; Motoröl b. Wartung; Ölfilter ern; Regelwartungsdienst; Wartung Sonstiges
25.09.2023	29.493	Motoröl b. Wartung; Ölfilter ern; Regelwartungsdienst; Wartung Sonstiges