

Expertise

Protocol number: 46197242
Order No. / Reference: 26488188
Inspection date: 22 Jun 2026

Manufacturer: Mercedes-Benz

Model: EQE 300 Electric Art Edition

VIN: W1KEG1BBXPF025894



Vehicle details

Manufacturer / Type / Model / Equipment

Mercedes-Benz EQE 300 Electric Art Edition

Vehicle Identification number W1KEG1BBXPF025894

Mileage (Read) 62,727 km

First registration 30 Mar 2023

Number of holders 1

Next periodical technical inspection 03/2028
(Report not on hand)

Power / Engine displacement 109 kw /

Fuel type / Cylinder Electric / 0

Gearbox / Number of gears Direct drive / 1

Type of drive Rear drive

Type of vehicle Saloon car

Colour / colour code Polarweiß

Doors / Seats 4 / 5

Upholstery type Cloth / leather
combination

Colour of upholstery Black-Anthracite



Vehicle details

Maintenance booklet / proof	digital proof / complete	Next maintenance in	666 Tag(e)
Last service on / at	03/2026 at 60,002 km		
Key is / should be	2 / 2	FZG documents	ZB#2 (B) was available (copy), ZB#1 (S) was not available.
		Letter No.	GQ158163
Previous damage / Accident	None detectable	Repainting	None detectable
Inspection conditions	sufficient	Lifting equipment / pit	No
Test drive	Not performed	Engine function test	Performed
Manufacturer key number/ type code number	2222 / BIN 00857		
Emission standard	2017/1151;WLTP;reine Elektrofz	fine dust sticker	
Permitted total weight	2,975 kg	Empty weight	

Tyres

Mounted tyres

#	Tyre size	Type of tyre	Manufacturer	Tread depth
1)	255/45 R19 104Y	Summer tyres on Light alloy	Bridgestone	5mm / 5mm
2)	255/45 R19 104Y	Summer tyres on Light alloy	Bridgestone	5mm / 5mm

Replacement

Typ	Tyre size	Type of tyre	Manufacturer	Tread depth
Tirefit		Expiration date 04/2028		

Legend: Tread depth information for the left tire is listed first, for the right tire it is listed second on the axle in the direction of travel.

TÜV SÜD Auto Partner GmbH
Wiesenring 2
04159 Leipzig

Inspection location
Hartmann Fleet Professionals GmbH
Leerenstraße 25
29683 Bad Fallingbommel



Equipment



Standard equipment

- ABS - Anti-lock Braking System
- Airbag: Automatic passenger airbag deactivation (The system automatically deactivates the passenger airbag as soon as it detects a rear-facing child seat or registers that the passenger seat is unoccupied. A transponder in the child seat is not necessary. If it detects that an adult is taking the seat, the airbag is automatically activated, reducing the risk of incorrect operation.)
- Ambient lighting (Stage the interior according to your personal preference or current mood. The 64 colors of the ambient lighting create fascinating color worlds that change dynamically or illuminate several areas in different colors.)
- ATTENTION ASSIST (the attention assistant) (detects signs of fatigue via steering behavior and can warn the driver of impending microsleep)
- Illuminated door sills with "Mercedes-Benz" lettering
- Electronic Stability Program (ESP)
- Chassis: Comfort chassis
- electric vehicle socket flap
- Flex-Bottleholder (With the Flex-Bottleholder, your drinks are always within easy reach and can be securely placed in the center console. The practical, large double cupholder holds two bottles or cups with a volume of up to 770 ml.)
- Black fabric headliner
- Instrument panel and door edges in ARTICO space grey imitation leather (with NEOTEX grain and double decorative stitching)
- Climate: Pre-conditioning (Enjoy your ideal climate right from the start. Simply set the time and temperature in advance – via Mercedes me or on the head unit. Heating or cooling the interior while charging also helps maintain battery power when starting the car.)
- Radiator grille with Mercedes-Benz pattern (The black panel radiator grille features finely designed stars)
- Charging system: Direct current charging system (DC charging) (For optimal charging speed with up to 170 kW and therefore high convenience. Fast charging stations such as IONITY supply the direct current required for your high-voltage battery. Thus, the DC charging system provides a long-distance-capable range in the shortest possible time.)
- LED taillights in 3D helix design (with light strip at the rear)
- Steering wheel: Multifunction sports steering wheel in leather (with steering wheel shift paddles (428) and steering wheel trim in silver chrome - control via touch control panels)
- Center console in high-gloss black
- Navigation accessories: Pre-installation for Live Traffic Information (Arrive at your destination stress-free, via the best route, and faster. Live Traffic Information receives more precise and up-to-date traffic data in real time than conventional systems and optimizes dynamic route guidance. Whether during rush hour or on a journey: You can react to many situations and easily bypass traffic jams and stop-and-go traffic.)
- Airbag for driver and front passenger
- Airbag: Kneebag for driver
- Airbag: Center airbag (Additional airbag for increased front occupant protection in the event of a side impact)
- Airbag: Windowbag all around
- Acoustic Surrounding Protection (To ensure that your electric vehicle does not become a danger to pedestrians and cyclists during almost silent driving, the Acoustic Surrounding Protection generates Mercedes-Benz specific sounds outside the vehicle up to a speed of approximately 30 km/h. It distinguishes between forward and reverse driving.)
- Traction control (ASR)
- DYNAMIC SELECT (With DYNAMIC SELECT, you can choose between the driving programs ECO, COMFORT, SPORT and INDIVIDUAL. The SPORT mode mobilizes the vehement power of the electric drive even more spiritedly. Regardless of the driving program, you can adjust the regenerative braking using the steering wheel shift paddles.)
- Rear seat belt status indicator in the instrument cluster
- Pedestrian protection
- Velour floor mats
- Transmission: Direct drive
- GUARD 360° Vehicle Protection Plus (Anti-theft alarm system, tow-away protection with visual and audible warning in case of detected change in position, audible alarm, interior monitoring (triggers upon movement inside the vehicle), GUARD 360° label on the front side windows, emergency key deactivation (3 years), collision detection (3 years))
- Remote trunk lid closing
- Rear headrests (3)
- Front headrests are height-adjustable
- Paint finish: Solid
- Charging cable for wallbox and public charging station, 5m, smooth 11kW (This charging cable, also called Mode 3 cable, allows you to charge the vehicle battery at the wallbox or at public charging stations with up to 11 kW (Type 2, 3-phase, 16 A).)
- Charging system: AC charging system 11kW (More flexibility: With the powerful AC charging system, you can charge your plug-in hybrid quickly and easily with up to 11 kW (3-phase) or 7.4 kW (1-phase). In addition to a wallbox at home, you can also connect your vehicle to a variety of public charging stations. These usually supply alternating current – just like conventional sockets.)
- Mercedes-Benz Emergency Call System (can provide a crucial time advantage in an emergency. A communication module with its own SIM card automatically triggers an emergency call upon detection of an accident, which can shorten the time until emergency services arrive. The emergency call can also be triggered manually to organize assistance.)



- Navigation: Hard disk navigation (Save time with fast hard disk navigation and flexible input via touch or voice control. The 3D displays of landmarks are also a visual treat. The intelligent system reliably guides you to your destination, accessing both local and up-to-date online information.)
- Package: Display (Driver display with 12.3-inch (31.2 cm) screen diagonal, LCD with LED matrix backlighting - OLED central display with 12.8-inch (32.5 cm) screen diagonal and haptic feedback - Fingerprint scanner in the control bar below the central display - MBUX multimedia system CONNECT 20 Premium)
- Package: Edition Electric Art (5U4 Radiator grille with Mercedes-Benz Pattern 637 Flexible charging system Pro PYD Electric Art Line PYN Premium Package U49 Electric vehicle socket flap)
- Package: Interior lighting package
- Package: Premium (Wireless charging system for mobile devices in the storage compartment, mirror project, brand logos, flush door handles, smartphone integration, Android Auto/Apple CarPlay, storage compartment and center console, memory package, KEYLESS-GO, comfort package including KEYLESS-GO, trunk lid comfort closing, HANDS-FREE ACCESS, ambient lighting, Burmester surround sound system, THERMOTRONIC climate control, Driving Assistance Package Plus, DIGITAL LIGHT, Parking Package, 360° camera, Guard 360° vehicle protection package, MBUX, Real-time navigation display, vehicle sockets)
- Radio: Extended MBUX functions (personalization (profiles) and prediction functions - MBUX voice assistant "LINGUATRONIC" with natural language understanding - activation via Hey Mercedes - learning function of the MBUX voice assistant through connection with a cloud-based online dictionary, Mercedes me connect service free of charge for 3 years from activation - Wi-Fi hotspot - internet radio)
- Radio accessories: Digital radio (Digital radio offers you even more information and entertainment through significantly more programs. Choose your personal favorite stations. At the same time, the clear, noise-free reception enhances the listening experience.)
- Radio accessory: Communication module (5G) for use with Mercedes me connect (The communication module transmits larger data volumes at high speed. The term "Advanced" refers to a particularly powerful mobile communications standard. You always benefit from this Turbo LTE, for example through even faster information flow in the many Mercedes me comfort services or Car-to-X communication.)
- Tire pressure monitoring system (This system monitors your tire pressure and warns you if it drops. This allows you to react more quickly to dangerous situations. Low tire pressure can also increase braking distance. If the system alerts you, you should add air as soon as possible. Correct tire pressure also increases tire life.)
- Remote and Charging Services Premium (pre-installation for Mercedes me Charge, free for 3 years from activation; pre-installation for IONITY: discounted fast charging, free for 1 year from activation; Mercedes me Services communication module)
- Navigation accessories: Pre-installation for navigation services (Wherever you go, you're always well-informed. Your vehicle answers your questions about your journey. You can find out the number of currently available parking spaces or the current weather. This makes trip planning even easier. Helpful extra: The digital logbook automatically records your journeys upon request.)
- Navigation: MBUX Navigation Premium (hard drive navigation - high-resolution navigation with satellite view - live traffic information and Car-to-X communication - fast online route calculation - map data updates: via Mercedes me connect with automatic over-the-air update via USB stick at a Mercedes-Benz dealer - navigation services: local search, online search, ads)
- Package: Electric Art Line Exterior (Black panel radiator grille with central Mercedes star - Front apron in body color with chrome trim elements in the upper and lower sections - Side skirts painted in black with chrome door trim strips - Rear apron painted in body color with a grained black lower section and chrome trim element - Belt and window line trim strips in chrome - 48.3 cm (19") alloy wheels in 5-twin-spoke design (R39) painted in high-gloss black and polished with 255/45 R19 tires on 8.5J x 19 ET47.5)
- Upholstery: NEOTEX/ARTICO leatherette black/space grey
- PRE-SAFE Impulse Side (PRE-SAFE Impulse Side can prepare you and your front passenger for a side impact with a lateral impulse, reducing the risk of injury. The system can move you from the side facing the accident towards the center of the vehicle. This can have a positive effect in a side impact.)
- PRE-SAFE System (The PRE-SAFE System utilizes the time before an impending accident. A variety of measures can reduce the stresses that occur. The innovative PRE-SAFE Sound generates a noise from the speakers and can trigger a natural protective reflex. This protects the inner ear by dampening the noise of the accident.)
- Radio: MBUX multimedia system (instrument display with 17.78 cm (7") diagonal - media display with 17.78 cm (7") diagonal and touch function - touch control buttons on the steering wheel - radio (FM/AM) - USB interface in the center console under the armrest - Bluetooth telephony with contact transfer and audio streaming of music files - display of vehicle functions (driver assistance systems, driving programs and vehicle settings) - favorites storage - smartphone-related voice control)
- Radio accessories: Pre-installation for MBUX Entertainment Plus (Stream videos and enjoy your favorite music: This package takes the entertainment in your Mercedes to the next level. In addition to music streaming services and internet radio, ZYNC video streaming is also available. You can conveniently purchase the required data package from a selected third-party provider.)



- Wheels: 48.3 cm (19") light alloy wheels in 5-twin-spoke design (black high-gloss painted and diamond-turned with 255/45 R19 on 8.5J x 19 ET47.5)
 - Wheels: Summer tires
 - Sensors for tailgate opening
 - Seats: Rear seat backrests foldable 40/20/40 split (If you only fold down the middle segment for longer items, the two outer seats remain fully usable.)
 - Seats: Comfort seats (Its name lives up to its promise – with the comfort seat including comfort headrest and elegant contour lighting, you travel in exceptional comfort. You can fully adjust the length, height, and tilt of the seat cushions. 4-way lumbar support)
 - Cruise control
 - TIREFIT (Your quick temporary solution for minor tire damage. Damage caused by embedded nails or shards of glass is sealed by sealant blown in via an air compressor. This allows you to continue driving to the nearest repair shop at speeds of up to 80 km/h.)
 - High-visibility vest for drivers
 - Heat pump (Increase the range of your electric vehicle, especially in cold temperatures. The heat pump efficiently uses the waste heat from the electric drive and the high-voltage battery to heat the interior. This significantly reduces the need for battery power for heating, giving you greater range.)
 - Decorative elements with fine textured black finish
- Remote Services Premium (Communication module - Mercedes me services: remote vehicle status query, programming of auxiliary heating/ventilation, remote door locking and unlocking, sunroof/windows with remote locking and opening including ventilation remote control, personalization, vehicle location, vehicle tracking, geographic vehicle monitoring, parking service monitoring, finder function (Remote Vehicle Finder), notification when exceeding the driving speed, Send2Car-Fun.)
 - Remote and Extended Charging Services Premium (The Remote and Extended Charging Services Premium connect you to your vehicle. You can locate it and control its functions remotely. With Mercedes me Charge, you can charge your vehicle at many public charging stations with maximum cost transparency and centralized billing. Also included: 1 year of free fast charging at IONITY stations.)
 - Seats: i-Size child seat attachment (in the rear - The system allows for quick and easy installation of i-Size child seats in the rear for the best possible protection of your child in the event of an accident. Top tether attachment points offer additional safety by anchoring the child seat behind the rear headrests.)
 - Seats: Heated seats for driver and front passenger (The intensity can be selected in three levels. Intelligent and comfortable: The seat heating switches off automatically.)
 - Door center panels and transition from the center console to the instrument panel in ARTICO man-made leather (black)
 - Traffic Sign Assistant
 - Pre-installation for remote and navigation services (The world of Mercedes me offers many services for your electric comfort experience. With navigation and active range monitoring, you receive corresponding range security, including necessary charging stops. The route calculation takes into account the current consumption, route profile, and checks whether the desired charging station is available.)
- Extra equipment**
- Paint finish: Solid polar white
 - Heat-insulating dark tinted glass

Brief expert findings

Documents submitted	At the time of the inspection, the vehicle registration certificate Part 2 (title) was available, but the vehicle registration certificate Part 1 (document) was not. (Copy)
VIN comparison	The vehicle identification number (VIN) was read from the vehicle and its conformity with the submitted documents was confirmed by the undersigned during the inspection.
Inspection	The inspection conditions were sufficient for the assessment of the vehicle. No lifting equipment or pit was available for inspecting the vehicle. Therefore, inspection of the vehicle's underside was only possible to a limited extent.
Test drive	No test drive/shunting maneuver was carried out during the inspection of the vehicle.
Engine function test	An engine test run was performed.



Value reducing factors

No.	Component group	Description
1	Door - rear left side	Door - dent(s) - Smooth repair work
2	Bonnet	Bonnet - Scratch(es) - Paint

Order/Scope of Order

An order was placed to prepare a sales report for the described vehicle. This report includes the following:

- Description of key vehicle information
- Documentation of equipment features
(Delivery by third-party service providers)
- Documentation of damage, defects, missing parts
- Documentation of prior damage, unrepaired prior damage, repainting
- A brief visual or functional inspection of the equipment details, if possible.
(Functional testing of driver assistance systems is not included in the scope of services!)
- a photographic documentation of the vehicle

Basis for the order

This product is based on the guidelines for vehicle returns and valuations published by Alphabet Fleet GmbH. The expert makes the specific findings in each individual case objectively, within the framework of the prescribed standards, based on their own expertise.

The vehicle inspection takes place in a fully assembled, unassembled state.

Damage or defects that can only be detected during disassembly/diagnostic work or through further investigation remain within the realm of prognostic risk. An increased risk exists due to concealed defects caused by fraudulent misrepresentation and which were not identifiable by the expert.

Damage or defects resulting from normal use or wear and tear of the vehicle will be accepted in accordance with the applicable standard.

There was no explicit identification or monetary consideration of the expected features within the product.

Features which, in their nature and extent, slightly exceed normal use but do not constitute unacceptable damage, will be documented and indicated as signs of wear, if applicable.

Damage or defects that, according to the applicable standard, can no longer be attributed to normal use or wear and tear are listed under "Value Reducing Factors" in the product description.

Depending on the product specification, a monetary ID can be provided. If this takes place, the costs can be 100% d or pro rata depending on the vehicle's age and mileage.

Previous damages

No apparent prior damage that had been repaired could be found on the vehicle.

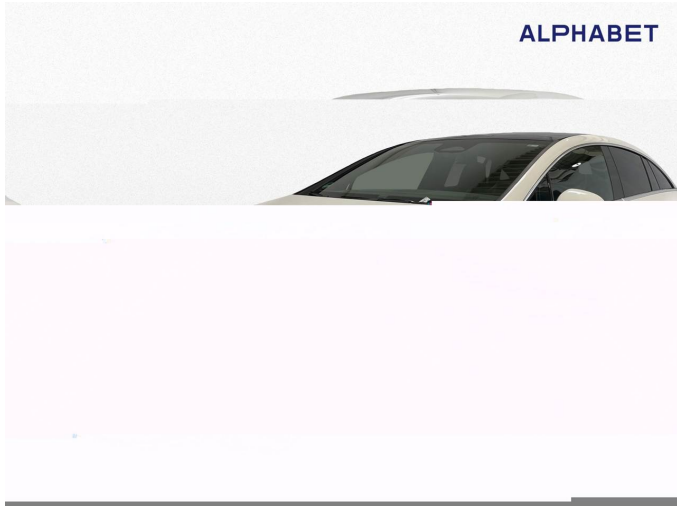


Figure 1: Diagonal front (left)



Figure 2: Diagonal front (right)



Figure 3: Diagonal rear (left)



Figure 4: Diagonal rear (right)



Figure 5: Interior - front



Figure 6: Interior - rear



Figure 7: Instrument cluster



Figure 8: Instrument panel



Figure 9: Interior 360° view



Figure 10: Cargo area



Figure 11: VIN

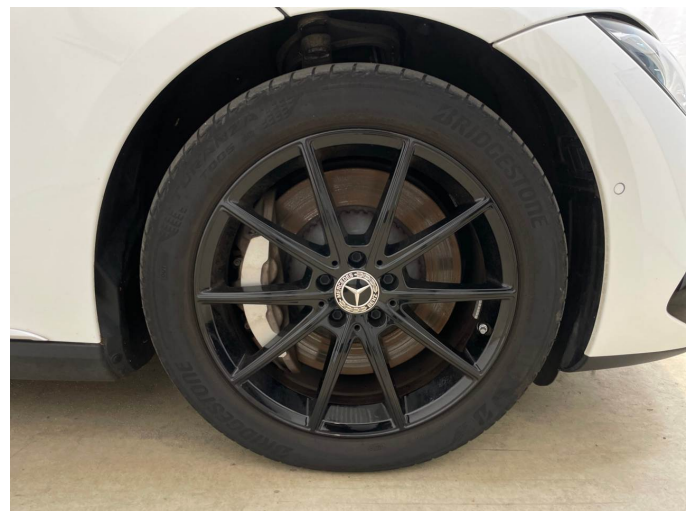


Figure 12: Mounted tyres



Figure 13: Documents



Figure 14: Documents



Figure 15: Documents

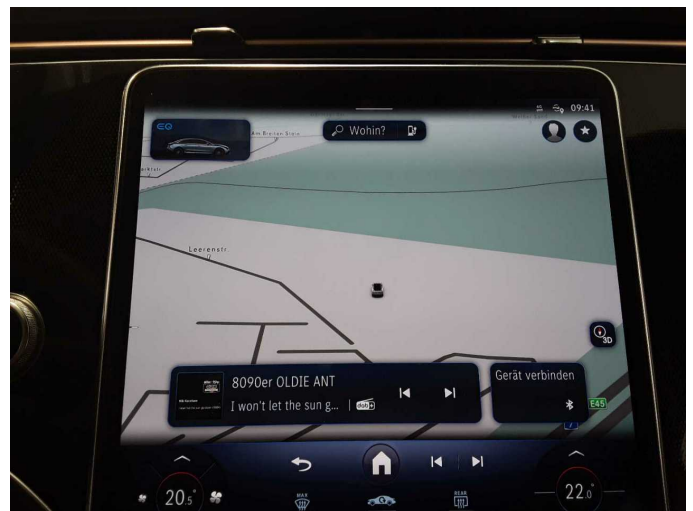


Figure 16: Navigation

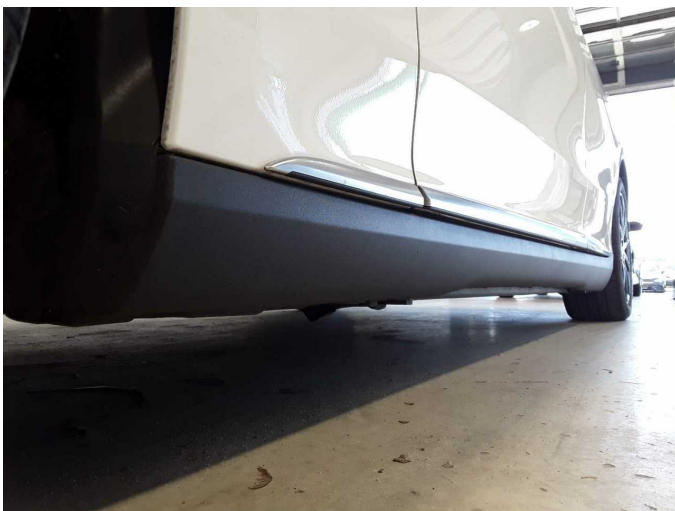


Figure 17: Misc.



Figure 18: Misc.



Figure 19: Misc.



Figure 20: Misc.

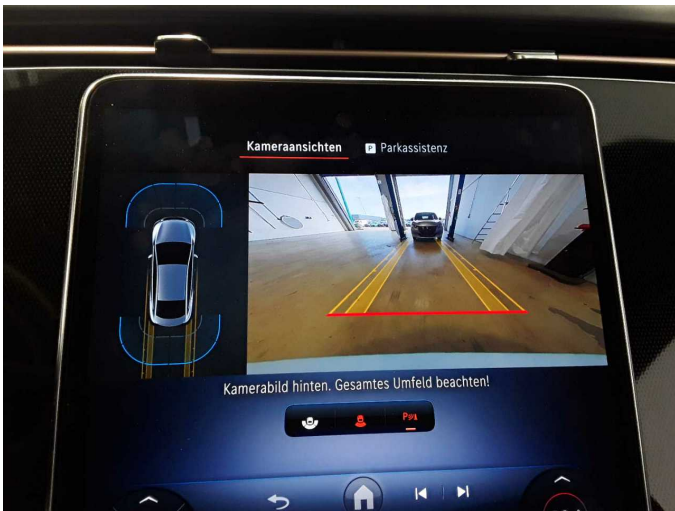


Figure 21: Misc.



Figure 22: Misc.



Figure 23: Misc.



Damage 1: Door - rear left side: Door - dent(s) - Smooth repair work



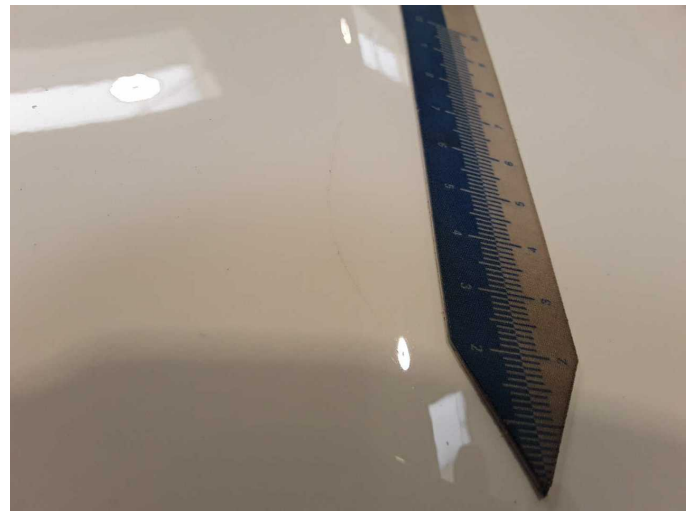
Damage 1: Door - rear left side: Door - dent(s) - Smooth repair work



Damage 2: Bonnet: Bonnet - Scratch(es) - Paint



Damage 2: Bonnet: Bonnet - Scratch(es) - Paint



Damage 2: Bonnet: Bonnet - Scratch(es) - Paint



Wartungshistorie

(gemäß Auftraggeber Informationen)

Fahrgestellnummer: W1KEG1BBXPF025894

Hersteller / Modell: MERCEDES-BENZ MERCEDES-BENZ EQE 300 Electric Art

Datum	KM-Stand	Beschreibung
27.03.2026	60.002	HU + AU; Regelwartungsdienst
21.11.2024	30.622	Regelwartungsdienst