

Expertise

Protocol number: 45868357
Order No. / Reference: 26260877
Inspection date: 9 Jun 2026

Manufacturer: Mercedes-Benz

Model: 317 CDI Sprinter Standard HA 9G-TRONIC

VIN: W1V9076331P402269



Vehicle details

Manufacturer / Type / Model / Equipment

Mercedes-Benz 317 CDI Sprinter Standard HA 9G-TRONIC

Vehicle Identification number W1V9076331P402269

Mileage (Read) 172,958 km

First registration 3 Dec 2021

Number of holders 1

Power / Engine displacement 125 kw / 1,950 ccm

Fuel type / Cylinder Diesel / 4

Gearbox / Number of gears Automatic / 9

Type of drive Rear drive

Type of vehicle Van

Colour / colour code Selenite Grey Metallic
7992

Doors / Seats 4 / 2

Upholstery type Cloth

Colour of upholstery Black



Vehicle details

Maintenance booklet / proof	Non-existent	Next maintenance in	471 Tag(e)
Key is / should be	4 / 4	FZG documents	ZB#2 (B) was available (copy), ZB#1 (S) was not available.
		Letter No.	GE644882
Previous damage / Accident	Detectable	Repainting	Detectable
Inspection conditions	sufficient	Lifting equipment / pit	yes
Test drive	Not performed	Engine function test	Performed
Manufacturer key number/ type code number	2222 / BBH 08488		
Emission standard	EURO6;WLTP;CI;PI/CI;N1 III, N2	fine dust sticker	
Permitted total weight	3,500 kg	Empty weight	

Tyres

Mounted tyres

#	Tyre size	Type of tyre	Manufacturer	Tread depth
1)	235/65 R16 115R	Winter tyres on Steel rim with wheel cover	Hankook	7mm / 7mm
2)	235/65 R16 115R	Winter tyres on Steel rim with wheel cover	Hankook	4mm / 4mm

Replacement

Typ	Tyre size	Type of tyre	Manufacturer	Tread depth
E	235/65 R16 115R	Summer tyres on Steel	Continental	9 mm

Legend: Tread depth information for the left tire is listed first, for the right tire it is listed second on the axle in the direction of travel.



Equipment

Standard equipment

- Storage compartment above windshield
- Rear towing eye
- ADAPTIVE ESP (latest generation) with load- and speed-dependent driving dynamics control
- Outdoor temperature display
- Battery: fleece battery 12 V / 92 Ah
- third brake light
- COC documents
- Tachometer
- Driving light assistant
- Generator 14 V / 200 A
- Transmission: 9G-TRONIC
- Grab handle for entry to the cargo area sliding door on the partition wall
- Instrument panel and combination instrument with various storage options
- Headrests (2), front
- Steering wheel adjustable for tilt and height
- Mercedes-Benz emergency call system
- Breakdown management
- Radio: Radio preparation
- Radio accessories: Communication module (LTE) for digital services
- Wheels: Steel rims 6.5 J x 16
- Crosswind Assist
- Seats: Passenger seat armrest
- Seats: Adjustable passenger seat
- Speedometer km/h
- First aid kit
- Pre-installation for Remote Services Plus
- Immobiliser
- Central locking with radio remote control
- Registration certificate, Part II
- Storage compartment under cockpit
- Axle ratio $i = 3.923$
- Driver's side airbag
- Electrically adjustable and heated exterior mirrors, left and right
- Hill start assist
- Brake lights, adaptive
- Diesel particulate filter and SCR
- Entry handle on rear right corner pillar
- Electric window regulator for driver and passenger door
- Noise measures
- Seatbelt warning device for driver's seat
- Main tank 71 liters
- HOLD function
- KEYLESS start
- Child safety locks on doors in the passenger compartment
- Paint finish: Solid color paint
- Headlight range control
- Without weight increase/decrease: 3,500 kg
- Upholstery: Cloth
- Radio: Pre-installation for digital radio DAB
- Tires: Tires without specified make
- Tires: Premium protection tires (3 years)
- Sliding door on the right, cargo/passenger compartment
- Power steering
- Seats: Driver's seat armrest
- Start-stop function
- continuous partition wall
- Lashing eyes
- Warning triangle
- Heat-insulating glass
- Approval N1



Extra equipment

- Storage above roof lining
- Towbar (fixed ball head)
- Entrance rear door
- Tachograph controls at the front under the headliner
- Digital operating instructions
- Chassis stabilization level 1
- Generator 14 V / 250 A
- Main tank 93 liters
- Intelligent tachograph EU
- Clothes hooks in the driver's cab
- Paint finish: Metallic
- LED High Performance Headlights
- Cable duct at rear portal
- Steering wheel: Multifunction steering wheel
- MBUX multimedia system with 7-inch touchscreen (High-resolution 7-inch touchscreen (960 x 540 pixels), AM/FM radio with dual tuner, Bluetooth connectivity with audio streaming and hands-free function, smartphone integration via Android Auto or Apple CarPlay, multimedia connection unit for connecting portable devices via a USB-C interface, 4 x 25 W output power, sound adjustment, separate volume control for audio and telephone, 2-way front speakers)
- Radio: Digital Radio DAB
- Rain sensor
- Spare wheel
- Spare wheel carrier with jack (under frame end)
- Rear view camera
- Keys: 2 additional master keys
- Rear mud flaps
- Front mud flaps
- Seats: Comfort passenger seat
- 12V socket in the trunk/cargo area
- Cruise control
- Hot water auxiliary heater (5 kW)
- Heat-insulating glass with band filter on the windshield
- Passenger side airbag
- 13-pin trailer socket
- Electrically folding exterior mirrors
- Ceiling light in the cargo/passenger compartment (with door contact)
- Front right window fixed in SW/ cargo area sliding door
- Seatbelt warning device for front passenger seat
- Interior lining of the cargo area up to roof height (wood)
- Hinged lid for storage compartment
- Tempmatic controlled air conditioning
- Cargo area floor with different paint finish
- LED light strip in the cargo area
- Cable duct on side wall
- Marker lights, side
- Navigation (linguatron voice control, Wi-Fi hotspot, multimedia connection unit for connecting portable devices via an additional USB-C interface, center fill speaker for improved sound and voice output, improved hands-free function, dual-phone operation, digital operating instructions)
- Package: Acoustics in conjunction with MBUX
- Package: Instrument panel charging package in conjunction with MBUX (The charging package expands the charging options in the cockpit with two 5V USB-C ports and one 12V socket. One USB port and the 12V socket are installed in the center storage compartment of the instrument panel, and another USB port is located in the lower part of the center console. This allows for the charging of electronic devices such as mobile phones within easy reach of the driver and front passenger.)
- Seats: Armrest, driver and passenger door
- Seats: Comfort driver's seat
- Power outlet in passenger compartment
- Partition wall with 1 continuous window
- WET WIPER SYSTEM

Retrofitted equipment

- Würth installation

Brief expert findings

Documents submitted	At the time of the inspection, the vehicle registration certificate Part 2 (title) was available, but the vehicle registration certificate Part 1 (document) was not. (Copy)
VIN comparison	The vehicle identification number (VIN) was read from the vehicle and its conformity with the submitted documents was confirmed by the undersigned during the inspection.
Inspection	The inspection conditions were sufficient for the assessment of the vehicle. Lifting equipment and/or a pit were available for examining the vehicle.
Test drive	No test drive/shunting maneuver was carried out during the inspection of the vehicle.
Engine function test	An engine test run was performed.



Value reducing factors

No.	Component group	Description
1	Misc.	Inspection / maintenance - No evidence - No deduction
2	Misc.	Main inspection - No evidence - No deduction
3	Misc.	Inspection / maintenance - No evidence - No deduction
4	Side panel - rear left side	Side panel - Scratched - Smart repair
5	Body	Body - Glued / labelled - De-glue / neutralise
6	Bonnet	Bonnet - Scratch(es) - Paint

Wear and tear

No.	Component group	Description
1	Wheel / tyres	Tyre - right (Über 4mm) - No deduction
2	Mudguard - right side	Mudguard - right side - Scratch(es) - No deduction
3	Rear of vehicle	Foot plate - Scratch(es) - No deduction
4	Rear bumper	Rear bumper - Scratch(es) - No deduction
5	Sliding door, right	Sliding door - dent(s) - No deduction
6	Boot lid / rear door	Rear door - right side - Dent / paintcoat damage - No deduction

The vehicle shows signs of wear and tear commensurate with its age and use.

Previous damages

No.	Previous damage	Extent of damage (Net)
1	Side - left, Provided by user / customer, from 27 Jun 2023	2.221,29 €

Repainting

No.	Repainting
1	Side panel - rear left side, Unprofessionally carried out, Invoice of repair done Non-existent

Paint coat thickness measurement

Side panel - rear left side	785 µm
-----------------------------	--------

Order/Scope of Order

An order was placed to prepare a sales report for the described vehicle. This report includes the following:

- Description of key vehicle information
- Documentation of equipment features
(Delivery by third-party service providers)
- Documentation of damage, defects, missing parts
- Documentation of prior damage, unrepaired prior damage, repainting
- A brief visual or functional inspection of the equipment details, if possible.
(Functional testing of driver assistance systems is not included in the scope of services!)
- a photographic documentation of the vehicle



Basis for the order

This product is based on the guidelines for vehicle returns and valuations of light commercial vehicles published by Alphabet Fleet Management GmbH. The expert makes the specific findings in each individual case objectively, within the framework of the prescribed standards, based on their own expertise.

The vehicle inspection takes place in a fully assembled, unassembled state.

Damage or defects that can only be detected during disassembly/diagnostic work or through further investigation remain within the realm of prognostic risk. An increased risk exists due to concealed defects caused by fraudulent misrepresentation and which were not identifiable by the expert.

Damage or defects resulting from normal use or wear and tear of the vehicle will be accepted in accordance with the applicable standard.

There was no explicit identification or monetary consideration of the expected features within the product.

Features which, in their nature and extent, slightly exceed normal use but do not constitute unacceptable damage, will be documented and indicated as signs of wear, if applicable.

Damage or defects that, according to the applicable standard, can no longer be attributed to normal use or wear and tear are listed under "Value Reducing Factors" in the product description.

Depending on the product specification, a monetary ID can be provided. If this takes place, the costs can be 100% or pro rata depending on the vehicle's age and mileage.

Previous damages

According to available information previous damages were repaired at the vehicle. Traces of repairs, which allow conclusions about the area of repair, were not recognizable during the inspection.



Figure 1: Diagonal front (left)



Figure 2: Diagonal front (right)



Figure 3: Diagonal rear (left)



Figure 4: Diagonal rear (right)

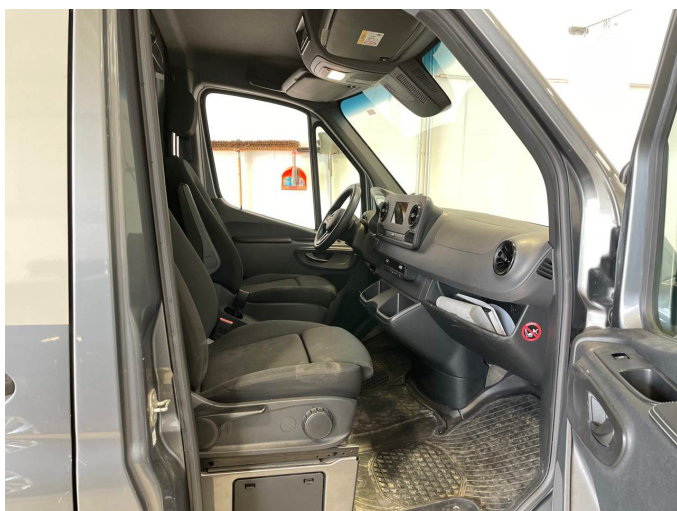


Figure 5: Interior - front



Figure 6: Interior - rear



Figure 7: Instrument cluster



Figure 8: Instrument panel



Figure 9: Interior 360° view

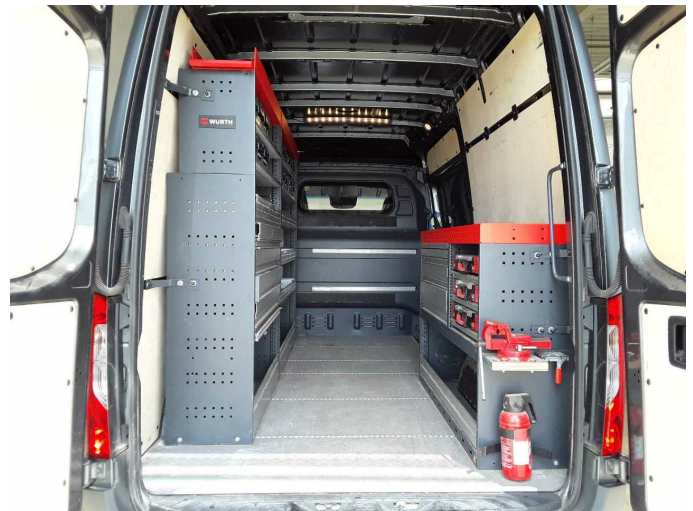


Figure 10: Cargo area



Figure 11: VIN



Figure 12: Mounted tyres



Figure 13: Documents



Figure 14: Documents



Figure 15: Documents



Figure 16: Navigation



Figure 17: Misc.



Figure 18: Misc.



Figure 19: Misc.



Figure 20: Misc.

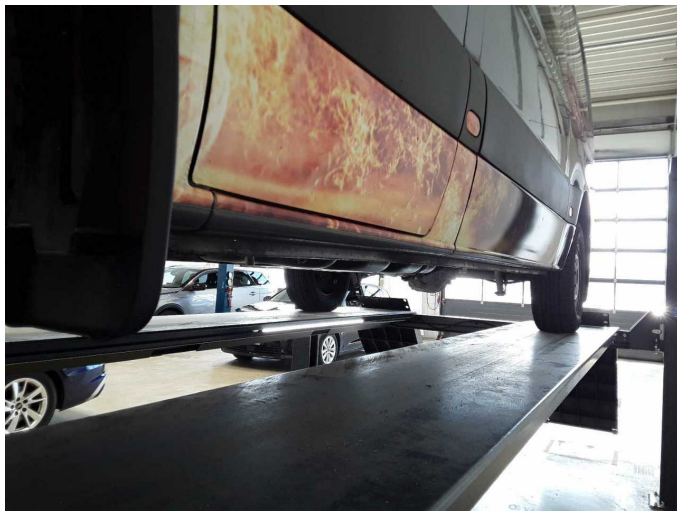


Figure 21: Misc.

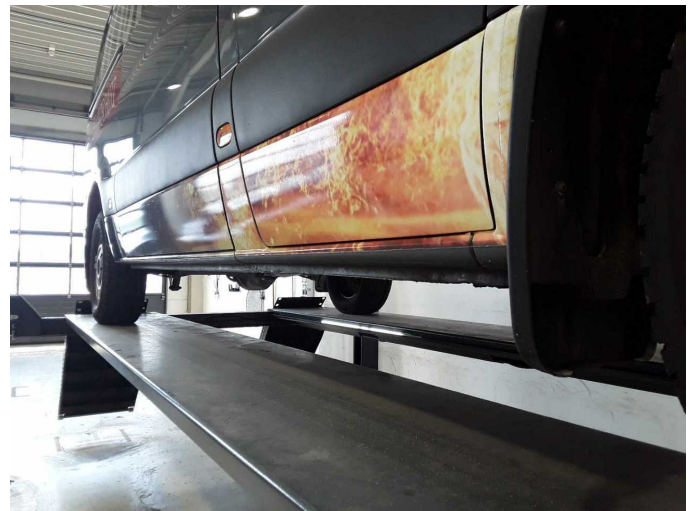


Figure 22: Misc.



Figure 23: Misc.



Figure 24: Misc.



Figure 25: Misc.



Figure 26: Misc.

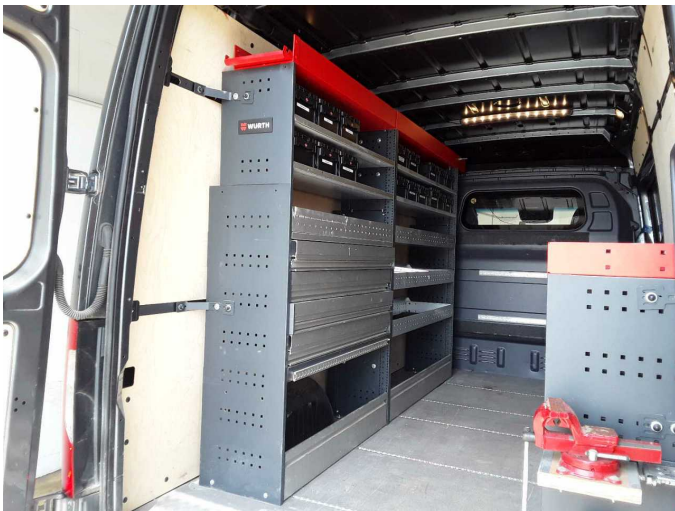
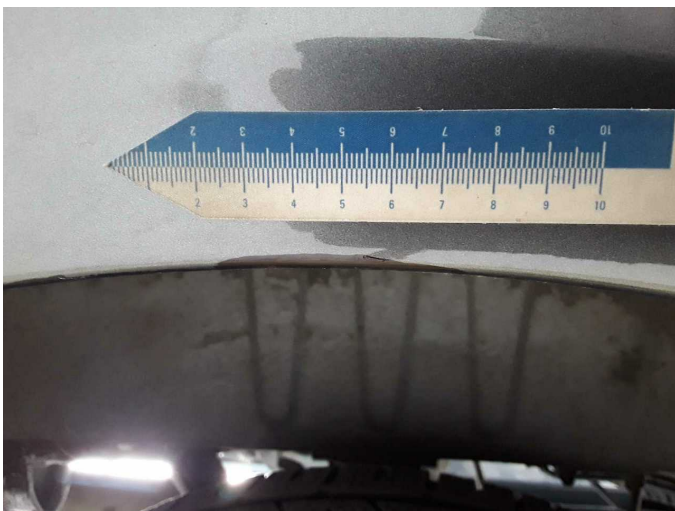


Figure 27: Misc.



Damage 4: Side panel - rear left side: Side panel - Scratched - Smart repair



Damage 4: Side panel - rear left side: Side panel - Scratched - Smart repair



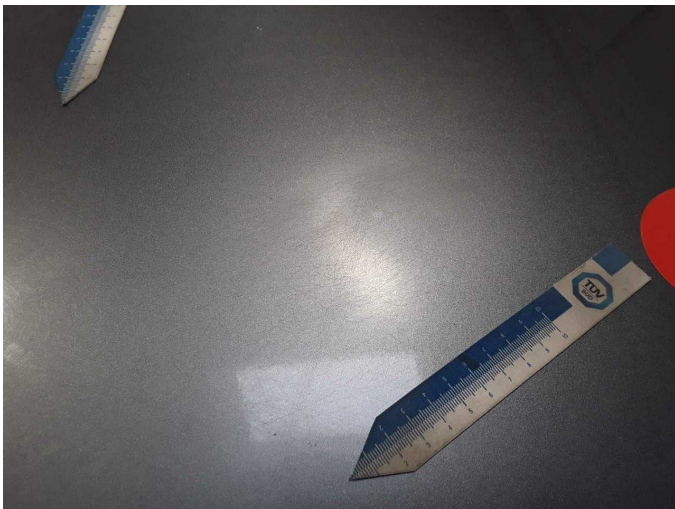
Damage 5: Body - Body - Glued / labelled - De-glue / neutralise



Damage 5: Body: Body - Glued / labelled - De-glue / neutralise



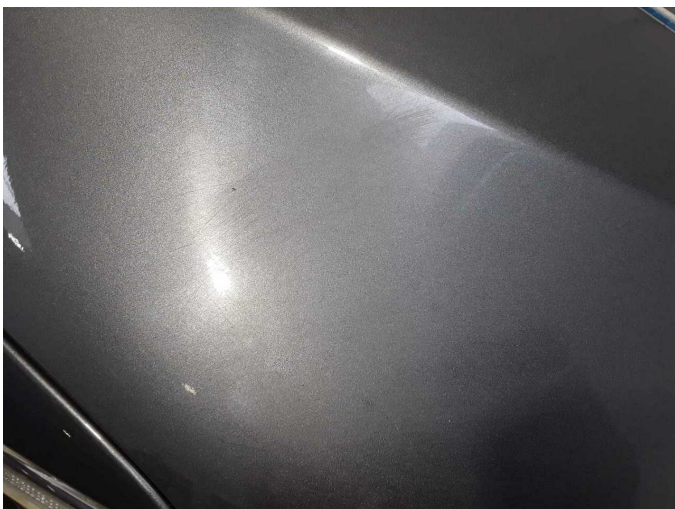
Damage 6: Bonnet: Bonnet - Scratch(es) - Paint



Damage 6: Bonnet: Bonnet - Scratch(es) - Paint



Damage 6: Bonnet: Bonnet - Scratch(es) - Paint



Damage 6: Bonnet: Bonnet - Scratch(es) - Paint



Repainting 1: Side panel - rear left side



Repainting 1: Side panel - rear left side