

» Overview

Type:

Client:

Order number:

Order creation date:

Order completed:

Inspection location:

Visited by:

Present at appraisal:

Report number:

VIN:

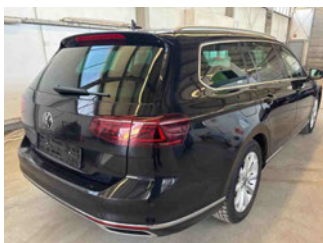
WVWZZZ3C9RE033974

License plate:

Contract number:



Front Left 3/4



Rear Right 3/4



Mileage

» Costs & Value Summary

| | Without tax | 19% VAT | Total with tax |
|--------------------------|-------------|----------|----------------|
| Repair costs (estimated) | € 3,704.05 | € 703.77 | € 4,407.82 |
| Net cost (estimated) | € 2,960.55 | € 562.50 | € 3,523.05 |

» Vehicle Data

| | |
|-------------------------------------|--|
| Vehicle category: | Passenger Car |
| Vehicle type: | EstateCar |
| Make: | Volkswagen |
| Model: | Passat |
| Manufacturers and type code: | 0603 / BQS |
| Date of first registration: | 15.03.2024 |
| Mileage: | 112,225 km |
| Proof of mileage: | ReadOff |
| Exterior colour: | Deep Black Perleffekt |
| Roof colour: | Deep Black Perleffekt |
| Propulsion: | Front |
| Fuel: | Diesel |
| Engine size (cc): | 2,000 ccm |
| Performance: | 110 kW (150 PS) |
| Length: | |
| Height: | |
| Width: | |
| Permitted total weight: | |
| Wheelbase: | |
| Number of powered axles: | 2 |
| Cylinders: | 4 |
| Euronorm: | Euro 6 |
| Number of doors: | 4 |
| Number of seats: | 5 |
| Gearbox: | Automatic 7-speed |
| Upholstery type: | Lining semi-leather |
| Interior colour: | Titanschwarz/Titanschwarz/Titanschwarz |
| Number of keys: | 1 |

» Documents & Maintenance

| | |
|--|--------------|
| Statutory inspection date: | |
| Registration certificate available: | No |
| Registration certificate received: | No |
| License plate: | None |
| Maintenance book: | Digital |
| Maintenance: | Not testable |
| Maintenance last date: | |
| Maintenance last mileage: | |

| | |
|---|---|
| 12-V outlet in center console in rear and in luggage compartment | Decorative inserts in brushed aluminum for dashboard and door trim panels |
| 2 beverage holders in front with cover | Digital radio reception DAB+ |
| 2 USB-C ports in the front, 1 USB-C charging socket on the center console in rear, charging capacity up to 45 W | Disc brakes in front |
| 3 head restraints in rear | Disc brakes in rear |
| 3-point seat belt for center rear seat | Diversity antenna for FM reception |
| 3-point seat belts for outer rear seats | Door trim panel in leather look |
| 3-point seat belts in front with height adjustment and seat belt pretensioners | Driver alert system |
| 4 AirStop® all-season tires 215/55 R17 | Driver and front passenger airbag with front passenger airbag deactivation |
| 4 alloy wheels "Helsinki" 6.5J x 17 | Driving on the right |
| 4-cylinder diesel engine 2.0 l | Dual-clutch transmission DSG DQ381 |
| 4-cylinder diesel engine 2.0 l TDI, 110 kW | Dynamic headlight range control with dynamic cornering light |
| 7-speed automatic transmission or dual-clutch transmission DSG, note: PR family EDF | Dynamic Road Sign Display |
| 8 speakers | Electric auxiliary air heater |
| Adaptive Cruise Control ACC stop & go incl. speed limiter | Electric luggage compartment opening and closing |
| Advanced high-beam control Dynamic Light Assist for LED matrix headlamps | Electric luggage compartment opening and closing, electric opening for luggage compartment cover |
| Air Care Climatronic 3 zone automatic climate control w/ allergen filter, enhanced air filter a. controls in rear | Electromechanical parking brake with Auto Hold function |
| Alloy spare wheel with original equipment tire | Electromechanical speed-sensitive power steering |
| Alternator 140 A | Electronic engine sound |
| App-Connect Wireless for Apple CarPlay and Android Auto | Electronic immobilizer |
| Aspherical exterior mirror on driver side | Electronic Stability Control and electromechanical brake booster |
| Aut. headlight control with separate daytime running light, entry lighting and manual exit lighting | Elegance |
| Auto-dimming interior rearview mirror | Elimination of nameplate for model designation on luggage compartment lid |
| Automatically-heated washer nozzles in front | Emergency call service, 10-year contract duration as of initial delivery, condition: mob. phone network available |
| Autonomous Emergency Braking Front Assist (for Adaptive Cruise Control ACC up to 210 km/h) | Emission standard EU6 AP |
| Basic equipment variant | Equipment options subset for Germany |
| Battery 420 A (70 Ah) | Ext. mirror w/surround lighting a. frontpassenger ext. mirror lowering function, folding/heated, auto-dimming on dr. side |
| Body-colored bumpers, with chrome strip and chrome trims in rear bumper | First aid kit, warning triangle and safety vest |
| Carpet mats in front and rear | Folding luggage compartment floor |
| Carrier frequency 433.92 MHz-434.42 Mhz | Folding trailer hitch, with electric release |
| Category 0 | Front and rear scuff plates in stainless steel |
| Child safety lock | Front center armrest, height- and longitudinally adjustable, w/ storage comp., 2 vents w/ chrome louvers in rear |
| Chrome trims on the side windows | Front seats with height adjustment, ergoComfort seat on driver side, with electrical backrest adjustment |
| Curtain airbag system for front and rear passengers incl. side airbags in front | Front vent, power mirror switch, rotary light and power window switches illuminated, with chrome bezels |
| Dark Red LED rear combination lamps, with dynamic turn signal | Front-wheel drive |
| Decorative inserts "Piano Black" for center console | Fuel system for diesel engine |
| | Fuel tank with a volume of 66 l |

| | |
|--|--|
| Gearshift knob in leather | Park Distance Control - warning signals for obstacles in the front and rear |
| Heated front seats | Part set without country-specific prescriptive standard |
| Helsinki 6.5J x 17, AirStop® all-season tires 215/55 R17 | Pedestrian Monitoring |
| Hill Start Assist | Plastic loading edge protection |
| Illuminated vanity mirror in sun visors, extractable sun visors | Preparation for We Connect and We Connect Plus or VW Connect and VW Connect Plus |
| Initial standard fuel filling | Privacy glass for rear side windows and rear window |
| Inserts of front seats and outer rear seats in ArtVelours microfleece, inner sides of bolsters in leather "Vienna" | Proactive passenger protection system in combination with Front Assist |
| Instrument cluster with electronic speedometer, odometer and trip odometer, tachometer | Radio |
| Interior lights with switch-off delay and dimmer, 2 LED reading lights in front and 2 in rear | Rain sensor |
| IQ.LIGHT - LED Matrix headlamps with LED sep. daytime running light, dynamic cornering light and dynamic turn signal | Rear exhaust tailpipe (standard) |
| ISOFIX anchorage points for mounting of 2 child seats on rear bench seat, also for i-Size child seats | Rear fog light on both sides, back-up light on both sides |
| Keyless Start without SAFELOCK | Rear seat area package with air conditioning and power system |
| Laminated safety glass windshield, heat- and sound-insulating | Rear shock absorption, basic version 1 |
| Lane keeping system Lane Assist | Rear view camera system |
| Leather-wrapped multi-function steering wheel, heated, with shift paddles | Refrigerant R1234yf |
| LED entry/warning lights in front doors | Regional code " ECE " for radio |
| LED front fog lamps and cornering light | Right exterior mirror, convex |
| LED light unit in front footwell | Safety-optimized front head restraints, longitudinally and height adjustable |
| Left-hand drive | Service indicator 30 000 km or 2 years (variable) |
| LongLife Service Regime | Shock absorption in front |
| Lower side trims in chrome | Silver-anodized roof rails |
| Luggage compartment cover extractable and removable, electrically opening | Small navigation system M&I (Media & Internet package) |
| Lumbar supports in front, power-adjustable on driver side | Smoker's package: Ashtray and cigarette lighter in front |
| Manual in German (Germany) | Special identification label for EC for M1 passenger vehicles |
| Mass damper for steering wheel, 36 Hz | Sports comfort seats in front |
| Mistral Gray headliner | Standard battery/alternator capacity |
| Mobile phone interface "Comfort" with inductive charging feature | Standard climatic zones |
| Multifunction camera | Standard engine starter |
| Multi-function display "Premium" with multi-color display | Standard manufacturing sequence |
| Navigation system "Discover Media" incl. Streaming & Internet | Standard paint coating |
| Net partition | Standard pedal cluster |
| No special edition | Standard roof |
| No special purpose vehicle, standard equipment | Start-stop system with regenerative braking |
| Non-folding front passenger seat backrest | Suspension range 34 installation control only, no requirement forecast |
| Not hot country | Textile luggage compartment lining |
| Online service, with OCU, with head unit coding, without engine immobilizer interconnection | Tire Pressure Monitoring System |
| Operating permit, alteration | Tires without specification of tire brand |
| Operating voltage 12 V | Tool kit and jack |
| | Two-tone horn |

| | |
|--|---|
| Type approval country Germany | Without special body measures |
| Unsplit rear bench seat, asymmetric folding backrest, center armrest with storage comp. and load-through hatch | Without surface protection, with additional transport protection measures |
| Vehicle class differentiation -3G0- | Without tie down straps/net/pocket |
| Vehicles with special upgrade measures | Without vehicle inlet |
| Wagon | Without voice control |
| Warning signal and warning lamp for front and rear seat belts not fastened | |
| Weight range 4 installation control only, no requirement forecast | |
| Wheel locks with extended theft protection | |
| Wheelbase | |
| With electronic steering column lock | |
| Without activated carbon canister with SCR | |
| Without Adaptive Chassis Control | |
| Without add. lights (interior lighting) | |
| Without additional front underbody guard | |
| Without additional tires | |
| Without alternative drive system | |
| Without auxiliary heater/parking heater | |
| Without CD/DVD for navigation | |
| Without charging cable | |
| Without child seat | |
| Without clock | |
| Without delivery equipment | |
| Without differential lock | |
| Without ECO function | |
| Without electric motor (hybrid) | |
| Without fire extinguisher | |
| Without front passenger seat control | |
| Without garage door opener | |
| Without headlamp washer system | |
| Without head-up display | |
| Without integrated toll system | |
| Without lane change assist | |
| Without locking and starting systems | |
| Without preparation for rotating beacon/siren combination | |
| Without preparation for two-way radio installation | |
| Without preparation for VTS (vehicle tracking system) | |
| Without rear spoiler | |
| Without roll-up sunshade | |
| Without seat ventilation/massage seat | |
| Without second battery | |

» Tyres

MOUNTED TYRES

| Make | Location | Position | Type | Rim | Dimensions | Profile depth |
|-------------|----------|----------|------------|-----------|------------------|---------------|
| Other | Front | Left | All season | Aluminium | 215/55 R 17 98 W | 6.0 mm |
| Other | Front | Right | All season | Aluminium | 215/55 R 17 98 W | 5.0 mm |
| Continental | Rear | Left | All season | Aluminium | 215/55 R 17 98 W | 6.5 mm |
| Continental | Rear | Right | All season | Aluminium | 215/55 R 17 98 W | 6.5 mm |

Permitted: Yes

Roadworthy: Yes

SPARE/EMERGENCY TYRE & ACCESSORIES

Spare tyre provided: No

Toolkit present: Yes

Jack present: Yes

» Devaluation Factors

| Nr | Location | Damage type | Repair type | Repair cost | Net cost |
|---------------------------|--------------------------|---|-----------------------------|-------------------|-------------------|
| 1 | Door FR | Dent(s) and scratch(es) | Repair and paint (complete) | € 541.00 | € 340.83 |
| 2 | Bumper F | Dent(s) and scratch(es) | Repair and paint (complete) | € 430.75 | € 271.37 |
| 3 | Tyres | Deviation from delivery condition/scope | Replace | € 408.00 | € 257.04 |
| 4 | Preparationtime bodywork | Paint preparation | Execute | € 270.75 | € 170.57 |
| 5 | Bumper grille | Deformed / Strained | Replace | € 204.99 | € 204.99 |
| 6 | Bumper corner RL | Scratch(es) | Repair and paint (partial) | € 203.93 | € 128.48 |
| 7 | Bumper moulding F | Broken | Replace | € 155.03 | € 97.67 |
| 8 | Tailgate / Boot | Scratch(es) | Spot repair | € 150.00 | € 150.00 |
| 9 | Alloy rim FR | Scratch(es) | Repair and paint (complete) | € 130.83 | € 130.83 |
| 10 | Tailgate / Boot | Dent(s) | Paintless dent repair | € 128.00 | € 128.00 |
| 11 | Roof | Dent(s) | Paintless dent repair | € 128.00 | € 128.00 |
| 12 | Door RL | Scratch(es) | Smart repair | € 120.00 | € 120.00 |
| 13 | Door FL | Scratch(es) | Smart repair | € 120.00 | € 120.00 |
| 14 | Bonnet | Stone chip(s) | Touch up | € 120.00 | € 120.00 |
| 15 | Door RR | Scratch(es) | Touch up | € 80.00 | € 80.00 |
| 16 | Steering wheel | Scratch(es) | Visual depreciation | € 50.00 | € 50.00 |
| 17 | Bumper grille FR | Dent(s) and scratch(es) | Replace | € 42.77 | € 42.77 |
| 18 | Wing RL | Scratch(es) | Polish | € 30.00 | € 30.00 |
| 19 | Wing RR | Scratch(es) | Polish | € 30.00 | € 30.00 |
| Total without VAT: | | | | € 3,344.05 | € 2,600.55 |

» Usage Damages

| Nr | Location | Damage type | Repair type | Repair cost | Net cost |
|---------------------------|---------------------|---------------|-------------|---------------|---------------|
| 1 | Boot lid covering R | Scratch(es) | Acceptable | | |
| 2 | Boot door lining R | Scratch(es) | Acceptable | | |
| 3 | Boot door lining L | Scratch(es) | Acceptable | | |
| 4 | Windscreen | Stone chip(s) | Acceptable | | |
| Total without VAT: | | | | € 0.00 | € 0.00 |

» Missing Parts

| Nr | Location | Damage type | Repair type | Repair cost | Net cost |
|---------------------------|--------------|-------------|-------------|-----------------|-----------------|
| 1 | Spare wheel | Missing | Replace | € 180.00 | € 180.00 |
| 2 | Ignition key | Missing | Replace | € 180.00 | € 180.00 |
| Total without VAT: | | | | € 360.00 | € 360.00 |

» Commercial devaluation

| | |
|---|-----------------------------------|
| Known previous damages: | No |
| Previous damages detectable: | No |
| Repainting present: | No |
| Paint thickness measurement performed: | Yes - no abnormalities/deviations |

PAINTTHICKNESS MEASUREMENT RESULTS

The measured values were in the usual range.

At least 3 measurements were carried out per component.

» Notes On The Assessment**Details of the assignment and the scope of the assessment:**

The order was placed to prepare a condition report on the described vehicle.

The vehicle condition assessment was carried out in accordance with the order on the basis of the standards for vehicle assessments specified by the client. The expert makes the findings in the individual case on the basis of his own expertise and at his own expert discretion.

Vehicle identification:

WVWZZZ3C9RE033974

VIN check, no comparison with documents possible

Vehicle condition:

Poor general condition

Inspection condition:

Sufficient, Insufficient light conditions

Lifting platform/lifting equipment used:

No

Testdrive carried out:

No

Engine test carried out:

Yes

» Remarks

This copy was generated electronically. It is valid without an original signature.

» Commercial Pictures



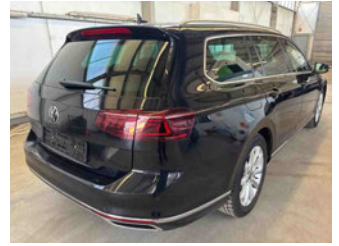
Front Left 3/4



Front Right 3/4



Rear Left 3/4



Rear Right 3/4



Mileage



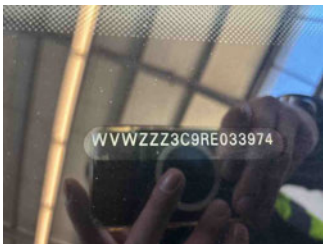
Tools



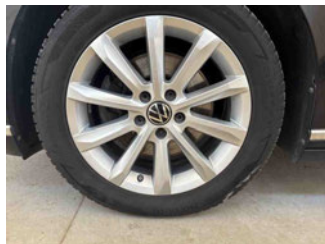
Sill outer L



Sill outer R



Chassis nr



Wheel FL



Wheel FR



Wheel RL



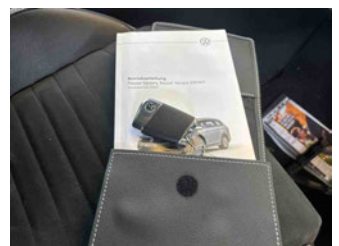
Wheel RR



Central console



Engine compartment



Documents



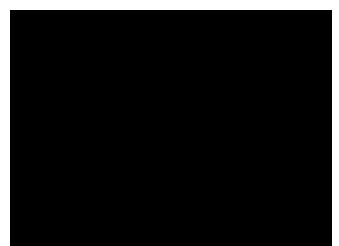
Interior arrangement



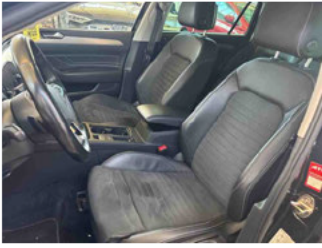
Maintenance



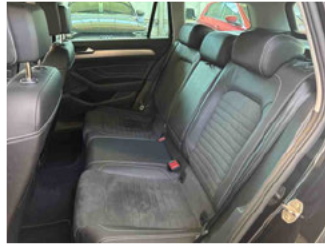
Towbar



History Maintenance



Interior - front



Interior - rear

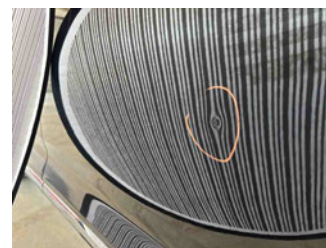
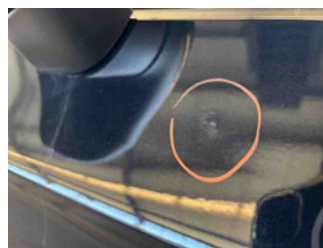
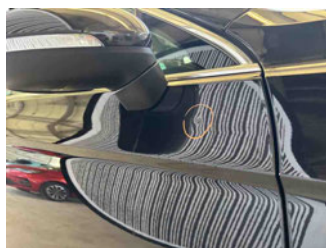
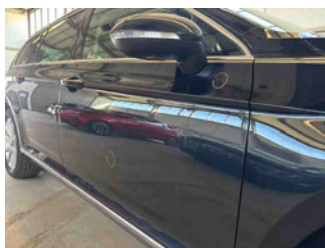


GPS/Radio

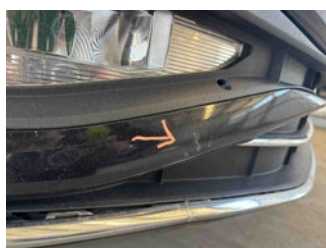
» Devaluation Damages

DEVALUATION FACTORS

| | | | |
|---|-------|--------------|----------|
| 1 - Door FR - Dent(s) and scratch(es) - Repair and paint (complete) | | Repaircosts: | € 541.00 |
| | | Net cost: | € 340.83 |
| Paint material | | | € 75.00 |
| Body work | 14 WU | | € 154.00 |
| Paint work | 26 WU | | € 312.00 |



| | | | |
|--|-------|--------------|----------|
| 2 - Bumper F - Dent(s) and scratch(es) - Repair and paint (complete) | | Repaircosts: | € 430.75 |
| | | Net cost: | € 271.37 |
| Paint material | | | € 78.75 |
| Body work | 8 WU | | € 88.00 |
| Paint work | 22 WU | | € 264.00 |

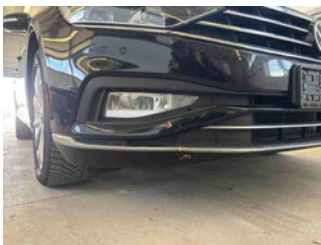


| | | | |
|---|--|--------------|----------|
| 3 - Tyres - Deviation from delivery condition/scope - Replace | | Repaircosts: | € 408.00 |
| | | Net cost: | € 257.04 |
| Parts Price | | | € 160.00 |
| Body work | 4 WU | | € 88.00 |
| Quantity | 2 | | |
| Comment | Reifen auf 1. Achse nicht pannensicher | | |

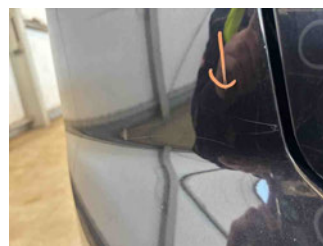
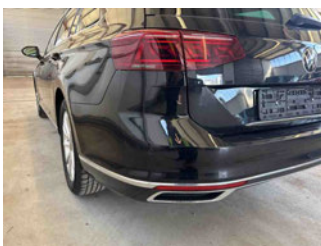


| | | | |
|--|--|--------------|----------|
| 4 - Preparationtime bodywork - Paint preparation - Execute | | Repaircosts: | € 270.75 |
| | | Net cost: | € 170.57 |
| Fixed Price | | | € 270.75 |

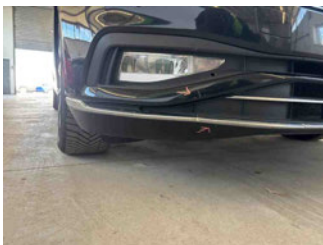
| | | | |
|---|-------|--------------|----------|
| 5 - Bumper grille - Deformed / Strained - Replace | | Repaircosts: | € 204.99 |
| | | Net cost: | € 204.99 |
| Parts Price | | | € 94.99 |
| Body work | 10 WU | | € 110.00 |



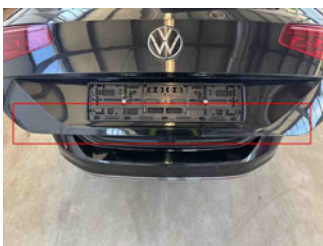
| | | | |
|---|-------|--------------|----------|
| 6 - Bumper corner RL - Scratch(es) - Repair and paint (partial) | | Repaircosts: | € 203.93 |
| | | Net cost: | € 128.48 |
| Paint material | | | € 28.93 |
| Body work | 5 WU | | € 55.00 |
| Paint work | 10 WU | | € 120.00 |



| | | | |
|--|-------|--------------|----------|
| 7 - Bumper moulding F - Broken - Replace | | Repaircosts: | € 155.03 |
| | | Net cost: | € 97.67 |
| Parts Price | | | € 45.03 |
| Body work | 10 WU | | € 110.00 |



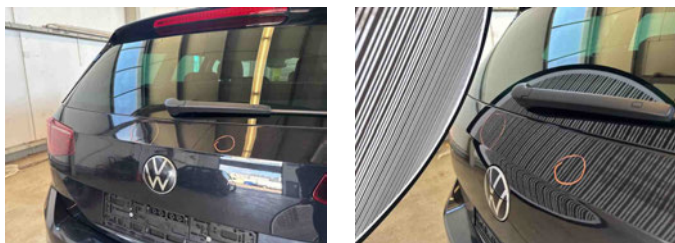
| | | | |
|---|--|--------------|----------|
| 8 - Tailgate / Boot - Scratch(es) - Spot repair | | Repaircosts: | € 150.00 |
| | | Net cost: | € 150.00 |
| Fixed Price | | | € 150.00 |



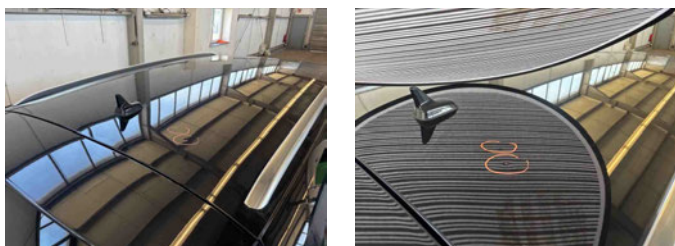
| | | | |
|--|------|--------------|----------|
| 9 - Alloy rim FR - Scratch(es) - Repair and paint (complete) | | Repaircosts: | € 130.83 |
| | | Net cost: | € 130.83 |
| Paint material | | | € 14.83 |
| Paint work | 6 WU | | € 72.00 |
| Other work | 4 WU | | € 44.00 |



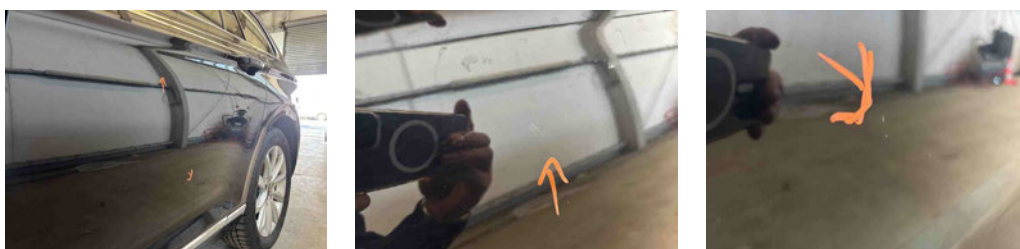
| | | | |
|--|------|--------------|----------|
| 10 - Tailgate / Boot - Dent(s) - Paintless dent repair | | Repaircosts: | € 128.00 |
| | | Net cost: | € 128.00 |
| Fixed Price | | | € 40.00 |
| Other work | 4 WU | | € 88.00 |
| Quantity | 2 | | |



| | | | |
|---|------|--------------|----------|
| 11 - Roof - Dent(s) - Paintless dent repair | | Repaircosts: | € 128.00 |
| | | Net cost: | € 128.00 |
| Fixed Price | | | € 40.00 |
| Other work | 4 WU | | € 88.00 |
| Quantity | 2 | | |



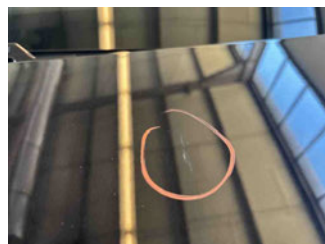
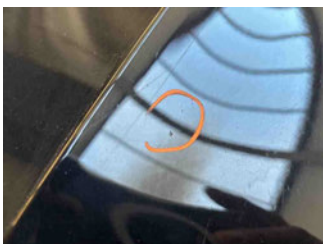
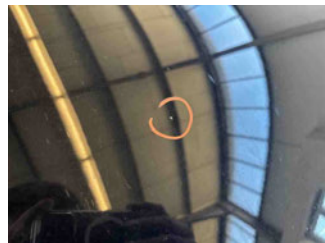
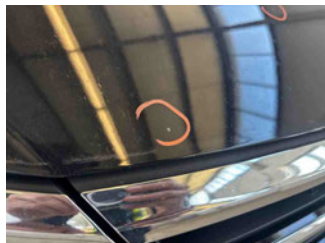
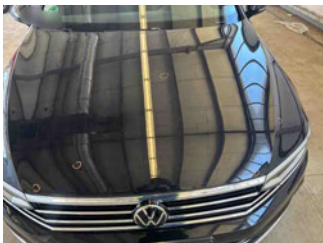
| | | | |
|---|--|--------------|----------|
| 12 - Door RL - Scratch(es) - Smart repair | | Repaircosts: | € 120.00 |
| | | Net cost: | € 120.00 |
| Fixed Price | | | € 120.00 |



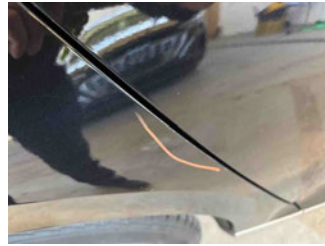
| | |
|---|-----------------------|
| 13 - Door FL - Scratch(es) - Smart repair | Repaircosts: € 120.00 |
| | Net cost: € 120.00 |
| Fixed Price | € 120.00 |



| | |
|--|-----------------------|
| 14 - Bonnet - Stone chip(s) - Touch up | Repaircosts: € 120.00 |
| | Net cost: € 120.00 |
| Paint material | € 120.00 |
| Quantity | 6 |



| | | | |
|---------------------------------------|---|--------------|---------|
| 15 - Door RR - Scratch(es) - Touch up | | Repaircosts: | € 80.00 |
| | | Net cost: | € 80.00 |
| Paint material | | | € 80.00 |
| Quantity | 4 | | |



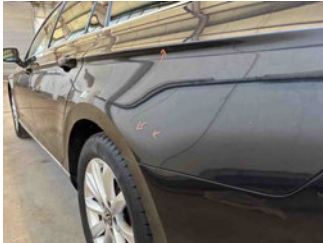
| | | | |
|---|--|--------------|---------|
| 16 - Steering wheel - Scratch(es) - Visual depreciation | | Repaircosts: | € 50.00 |
| | | Net cost: | € 50.00 |
| Fixed Price | | | € 50.00 |



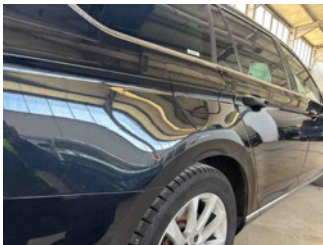
| | | | |
|---|------|--------------|---------|
| 17 - Bumper grille FR - Dent(s) and scratch(es) - Replace | | Repaircosts: | € 42.77 |
| | | Net cost: | € 42.77 |
| Parts Price | | | € 20.77 |
| Body work | 2 WU | | € 22.00 |



| | |
|-------------------------------------|----------------------|
| 18 - Wing RL - Scratch(es) - Polish | Repaircosts: € 30.00 |
| | Net cost: € 30.00 |
| Fixed Price | € 30.00 |

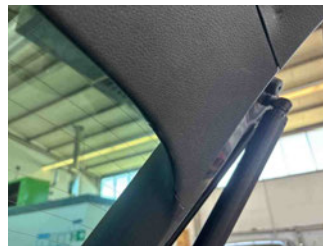
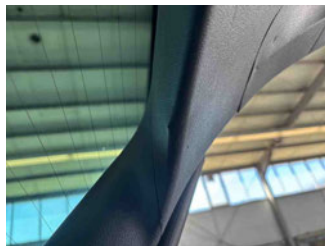
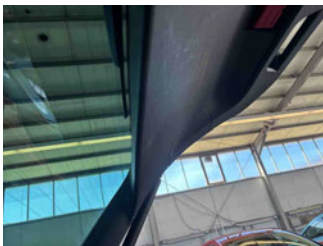


| | |
|-------------------------------------|----------------------|
| 19 - Wing RR - Scratch(es) - Polish | Repaircosts: € 30.00 |
| | Net cost: € 30.00 |
| Fixed Price | € 30.00 |

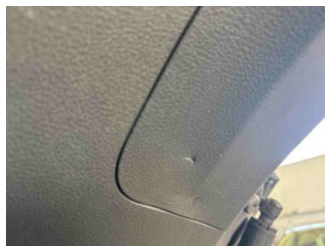
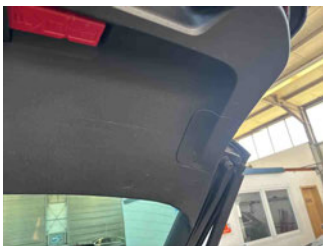


USAGE DAMAGES

| | |
|--|---------------------|
| 1 - Boot lid covering R - Scratch(es) - Acceptable | Repaircosts: € 0.00 |
| | Net cost: € 0.00 |



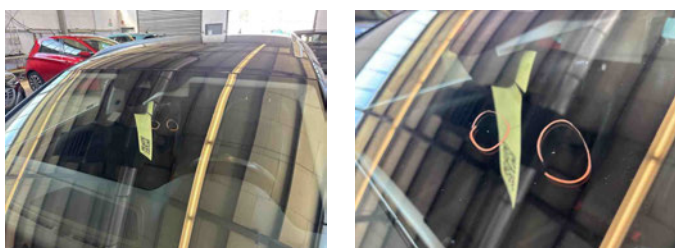
| | |
|---|---------------------|
| 2 - Boot door lining R - Scratch(es) - Acceptable | Repaircosts: € 0.00 |
| | Net cost: € 0.00 |



| | | |
|---|--------------|--------|
| 3 - Boot door lining L - Scratch(es) - Acceptable | Repaircosts: | € 0.00 |
| | Net cost: | € 0.00 |

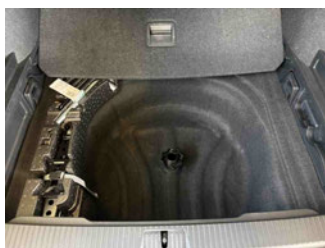


| | | |
|---|--------------|--------|
| 4 - Windscreen - Stone chip(s) - Acceptable | Repaircosts: | € 0.00 |
| | Net cost: | € 0.00 |



MISSING PARTS

| | | |
|-------------------------------------|--------------|----------|
| 1 - Spare wheel - Missing - Replace | Repaircosts: | € 180.00 |
| | Net cost: | € 180.00 |
| Parts Price | | € 180.00 |



| | | |
|--------------------------------------|--------------|----------|
| 2 - Ignition key - Missing - Replace | Repaircosts: | € 180.00 |
| | Net cost: | € 180.00 |
| Parts Price | | € 180.00 |

| | |
|----------|---|
| Quantity | 1 |
|----------|---|

