

Expertise

Protocol number: 45936771
Order No. / Reference: 26472696
Inspection date: 11 Jun 2026

Manufacturer: Volkswagen

Model: Passat Variant 2.0 TDI SCR DSG Business

VIN: WVVZZZ3CZPE039605



Vehicle details

Manufacturer / Type / Model / Equipment

Volkswagen Passat Variant 2.0 TDI SCR DSG Business

Vehicle Identification number WVVZZZ3CZPE039605

Mileage (Read) 123,547 km

First registration 19 Apr 2023

Number of holders 2

Power / Engine displacement 110 kw / 1,968 ccm

Fuel type / Cylinder Diesel / 4

Gearbox / Number of gears Automatic / 7

Type of drive Front drive

Type of vehicle Station wagon

Colour / colour code Deep Black Perleffekt

Doors / Seats 5 / 5

Upholstery type Cloth

Colour of upholstery Grey-Black

TÜV SÜD Auto Partner GmbH
Wiesenring 2
04159 Leipzig

Inspection location
Hartmann Fleet Professionals GmbH
Leerenstraße 25
29683 Bad Fallingbommel



Equipment



Standard equipment

- Airbag for driver and front passenger (airbag deactivation switch on the passenger side)
- Anti-lock braking system (ABS)
- Adaptive Cruise Control (ACC) "stop & go", including speed limiter
- Electrically adjustable and heated exterior mirrors, ambient lighting (automatically dimming on the driver's side)
- Chrome trim on the side windows
- black roof rails
- Tachometer
- Entry/warning lights in LED technology in the front doors
- Electronic parking brake including auto-hold function
- Automatic headlight control (with daytime running lights, "Leaving home" function and manual "Coming home" function)
- Pedestrian detection
- Adjustable luggage compartment floor
- Rear window heated
- rear window wiper
- ISOFIX mounting points (for attaching 2 child seats to the rear seats, also for i-Size child seats)
- Rear headrests (3)
- LED fog lights and cornering lights
- LED taillights
- Steering wheel: Multifunction steering wheel in leather, with paddle shifters
- Multifunction display "Premium" with multi-color display (showing, among other things: - Outside temperature - Average consumption - Average speed - Trip distance - Trip time - Gear recommendation - Speed warning - Comfort - Current consumption - Range - Service - Time with extended display options, e.g.: - Digital speedometer - Digital oil temperature display - Lights & visibility - Language - Auxiliary heater - Winter tires)
- Emergency call service (no registration required, service is activated upon delivery)
- Upholstery: Fabric "Business" (seat center panels of the front seats and the outer rear seats in fabric "Weave")
- Proactive occupant protection system in conjunction with "Front Assist" (detects critical traffic situations with increased accident potential - prepares vehicle occupants and the vehicle for a possible accident by tightening the front, fastened seat belts and securing the driver and front passenger, and closing open windows and the sunroof except for a gap)
- Radio "Composition" (touchscreen with 16.5 cm screen diagonal - 8 speakers - output power 4 x 20 watts - diversity antenna for FM reception - dual tuner - RDS - MP3 playback - USB-C interface - 3-way tone control)
- Tire pressure monitoring system (passive)
- Wheels: 4 light alloy wheels "Sepang" 6.5 J x 16 (tires 215/60 R 16, optimized for rolling resistance)
- Rear bench seat undivided, backrest asymmetrically split and foldable, with center armrest (and pass-through option)
- Airbag, head airbag system for front and rear passengers (including front side airbags)
- App-Connect (Volkswagen offers three interfaces for connecting smartphones with numerous possibilities: - Apple CarPlay - Android Auto from Google - MirrorLink)
- Cup holders (2) front
- Hill start assist
- third brake light
- Headliner in Mistral Grey
- Diesel particulate filter
- Parking aid - warning signals for obstacles in the front and rear area
- Electronic stability program and electromechanical brake booster
- Remote release for luggage compartment lid
- Windscreen made of laminated safety glass, heat and sound insulating
- Transmission: 7-speed DSG (7-speed dual-clutch transmission DSG)
- Interior lights with delayed shut-off and dimming function (2 LED reading lights each at the front and rear)
- Air conditioning (with active combination filter)
- Front headrests (safety-optimized, longitudinally and height-adjustable)
- LED headlights with daytime running lights
- Headlight range control
- Front center armrest, height and length adjustable, with storage box (2 rear air vents with chrome slats)
- Fatigue detection (detects signs of possible driver fatigue based on characteristic steering behavior, time of day and driving duration and issues a visual and audible warning)
- Mesh partition
- Non-smoking version (storage compartment and 12V socket at the front)
- Emergency braking assistant "Front Assist" (for automatic distance control ACC up to 210 km/h)
- Package: Light and Sight Package "Plus" (LED lights in the front footwell - Electrically adjustable and heated exterior mirrors, automatically dimming on the driver's side - Entry/warning lights in the front doors, in LED technology - Automatic headlight control, with daytime running lights, "Leaving Home" function and manual "Coming Home" function - Interior light with delayed shut-off and dimming function, 2 LED reading lights each in the front and rear - Automatically dimming interior mirror - Illuminated vanity mirrors - Extendable sun visors - Rain sensor)
- Radio accessories: Digital radio reception DAB+ (reception of digitally broadcast radio stations and traffic information in addition to the analog station offering - reception depends on the local availability of digital networks - expanded range of radio programs - improved reception performance)
- Wheels: Tire Mobility Set (12-volt compressor and tire sealant)
- Gearshift knob in leather
- Keyless start system without safe locking



- Power steering (electromechanical, speed-dependent)
- Seats: Comfort seats in the front
- Seats: Lumbar support in the front (driver's side electrically adjustable)
- Lane Assist (warns with a corrective steering intervention if the vehicle unintentionally leaves the lane)
- 12V power outlet on the rear center console (and in the luggage compartment)
- First aid kit, warning triangle and high-visibility vest
- Electronic immobilizer
- Central locking with remote control

Extra equipment

- App-Connect Wireless (Volkswagen offers three interfaces for connecting smartphones with numerous possibilities: - Apple CarPlay - Android Auto from Google - MirrorLink)
- High beam control "Light Assist" (automatically switches on the high beam in darkness from 65 km/h - detects vehicles ahead and oncoming vehicles and automatically dims the headlights before they are blinded)
- Paint finish: Pearl effect
- Navigation system "Discover Media" incl. "Streaming & Internet" (4x20 watts, user interface with proximity sensor, dual tuner with phase diversity, vehicle menu, speed, volume adjustment, map, 2D display, tone control, 3-way TFT display with touchscreen operation, navigation "Discover Media" incl. "Streaming & Internet", MP3 radio, telephone contact addresses for navigation, telephone interface, 2 USB ports also for iPod/iPhone, traffic sign recognition "VW Media Control", We Connect Plus, 3 years, incl. We Connect route guidance, dynamic RDS, TMC tuner)
- Package: Ambient lighting (ambient lighting, 1-color - entry/warning lights in LED technology in all doors)
- Proactive occupant protection system and lane change assistant "Side Assist" (Proactive occupant protection system in conjunction with "Front Assist" and "Side Assist" - lane change assistant "Side Assist" and parking assistant)

- Seat belts: Three-point automatic seat belt (seat belt for middle rear seat - seat belts for outer rear seats - front seat belts with height adjustment and belt tensioner)
- Seats: Front seats height-adjustable (ergoComfort seat on the driver's side - with electric backrest adjustment)
- Start-stop system (with brake energy recuperation)
- Telephone interface
- Textile floor mats (front and rear)
- Warning tone and light for unfastened seat belts front and rear

- Roof headliner in titanium black
- Chassis: Rear suspension with fully automatic level control
- Removable luggage compartment protective mat (back of the rear seat backrest with black rubber coating)
- Tailgate with electric opening and closing, electric opening for luggage compartment cover (extendable and removable luggage compartment cover with electric opening - tailgate with electric opening and closing)
- Package: "Business Premium" package incl. navigation (from Business trim level) (2 USB-C ports in the front, USB-C charging socket in the rear, 230V socket, App-Connect incl. wireless, Apple CarPlay, Android Auto, "Travel Assist" driver assistance system and "Lane Assist" lane keeping assist system, Air Care Climatronic with 3-zone temperature control, active combination filter and rear controls, lumbar support in the front, electric on the driver's side, massage function on the driver's side, "Rear View" reversing camera, heated windshield washer nozzles, Comfort telephone interface, inductive charging function, heated front seats)
- Voice control
- "Comfort" telephone interface with inductive charging function (hands-free system)
- Laminated safety glass, noise-reducing for front and side windows (including rear side windows and tinted rear window)

Brief expert findings

Documents submitted	At the time of the inspection, the vehicle registration certificate Part 2 (title) was available, but the vehicle registration certificate Part 1 (document) was not. (Copy)
VIN comparison	The vehicle identification number (VIN) was read from the vehicle and its conformity with the submitted documents was confirmed by the undersigned during the inspection.
Inspection	The inspection conditions were sufficient for the assessment of the vehicle. No lifting equipment or pit was available for inspecting the vehicle. Therefore, inspection of the vehicle's underside was only possible to a limited extent.
Test drive	No test drive/shunting maneuver was carried out during the inspection of the vehicle.
Engine function test	An engine test run was performed.



Value reducing factors

No.	Component group	Description
1	Wing mirror - right side	Cap - Scratch(es) - Smart repair
2	Boot lid / rear door	Boot lid - dent(s) - Smooth repair work
3	Side panel - rear right side	Side panel - Dent / paintcoat damage - Smart repair
4	Rear bumper	Rear bumper - Scratch(es) - Smart repair
5	Mudguard - left side	Mudguard - left side - Scratch(es) - Smart repair
6	Cab	Insulation lining - Damage caused by marten / rodent - Replace
7	Bonnet	Insulation lining - Damage caused by marten / rodent - Replace
8	Trim / covers	Boot lining - Scratch(es) - Loss in value
9	Trim / covers	Boot lid - interior trim - Scratch(es) - Replace
10	Tail light	Tail lamp - left side - Broken / torn - Replace
11	Tail light	Tail lamp - right side - Broken / torn - Replace

Wear and tear

No.	Component group	Description
1	Vehicle glazing	Windscreen - Stone chips - No deduction
2	Bonnet	Bonnet - Stone chips - No deduction
3	Roof	Roof - dent(s) - No deduction

The vehicle shows signs of wear and tear commensurate with its age and use.

Missing parts

Description

Documents - Service book (Digitaler Ausdruck)

Previous damages

No.	Previous damage	Extent of damage (Net)
1	Front, Provided by user / customer, from 12 Feb 2025	7.327,24 €

Order/Scope of Order

An order was placed to prepare a sales report for the described vehicle. This report includes the following:

- Description of key vehicle information
- Documentation of equipment features
(*Delivery by third-party service providers*)
- Documentation of damage, defects, missing parts
- Documentation of prior damage, unrepaired prior damage, repainting
- A brief visual or functional inspection of the equipment details, if possible.
(*Functional testing of driver assistance systems is not included in the scope of services!*)
- a photographic documentation of the vehicle



Basis for the order

This product is based on the guidelines for vehicle returns and valuations published by Alphabet Fleet GmbH. The expert makes the specific findings in each individual case objectively, within the framework of the prescribed standards, based on their own expertise.

The vehicle inspection takes place in a fully assembled, unassembled state.

Damage or defects that can only be detected during disassembly/diagnostic work or through further investigation remain within the realm of prognostic risk. An increased risk exists due to concealed defects caused by fraudulent misrepresentation and which were not identifiable by the expert.

Damage or defects resulting from normal use or wear and tear of the vehicle will be accepted in accordance with the applicable standard.

There was no explicit identification or monetary consideration of the expected features within the product.

Features which, in their nature and extent, slightly exceed normal use but do not constitute unacceptable damage, will be documented and indicated as signs of wear, if applicable.

Damage or defects that, according to the applicable standard, can no longer be attributed to normal use or wear and tear are listed under "Value Reducing Factors" in the product description.

Depending on the product specification, a monetary ID can be provided. If this takes place, the costs can be 100% d or pro rata depending on the vehicle's age and mileage.

Previous damages

According to available information previous damages were repaired at the vehicle. Traces of repairs, which allow conclusions about the area of repair, were not recognizable during the inspection.

Comments

- Der beiliegende Winterradsatz ist kein Bestandteil des Auslieferungsumfangs.

- Marder Spuren sind im Motorraum, weitere Schäden sind möglich.



Figure 1: Diagonal front (left)



Figure 2: Diagonal front (right)



Figure 3: Diagonal rear (left)



Figure 4: Diagonal rear (right)



Figure 5: Interior - front



Figure 6: Interior - rear



Figure 7: Instrument cluster



Figure 8: Instrument panel



Figure 9: Interior 360° view



Figure 10: Cargo area

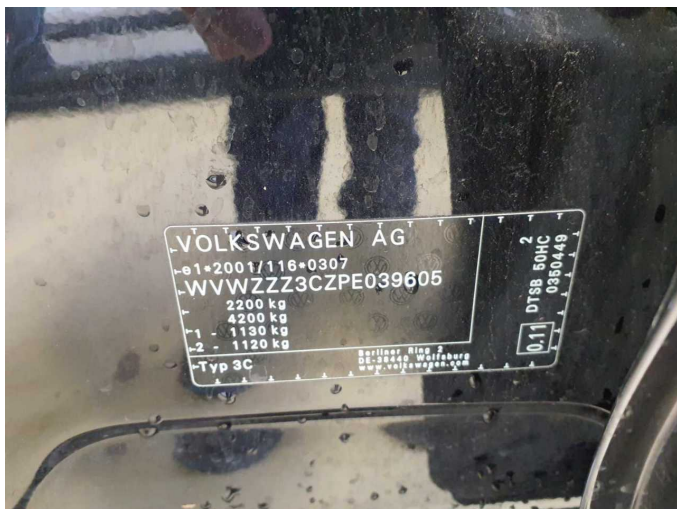


Figure 11: VIN



Figure 12: Mounted tyres



Figure 13: Documents



Figure 14: Additional tyres

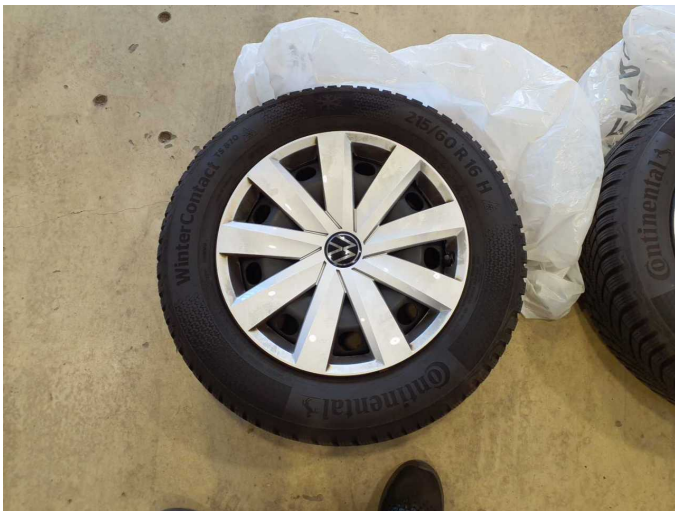


Figure 15: Additional tyres



Figure 16: Navigation



Figure 17: Misc.



Figure 18: Misc.



Figure 19: Misc.



Figure 20: Misc.



Figure 21: Misc.



Figure 22: Misc.



Figure 23: Misc.

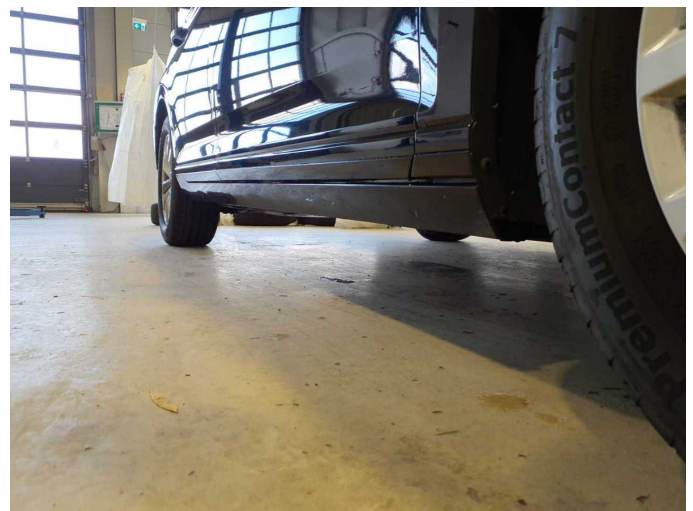


Figure 24: Misc.



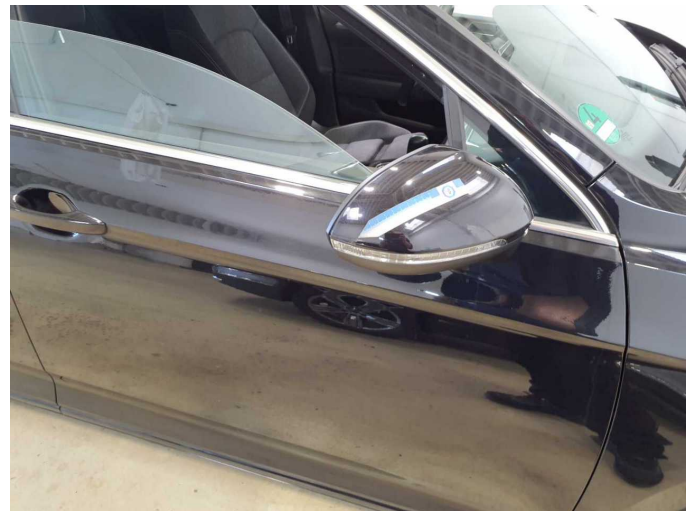
Figure 25: Misc.



Figure 26: Misc.



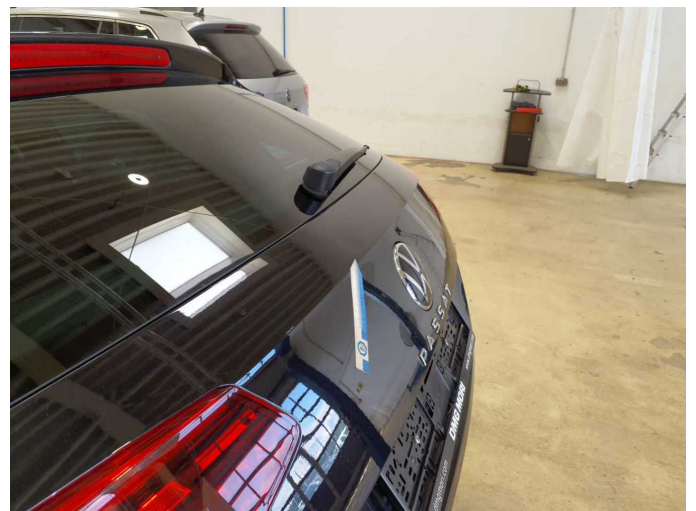
Figure 27: Misc.



Damage 1: Wing mirror - right side: Cap - Scratch(es) - Smart repair



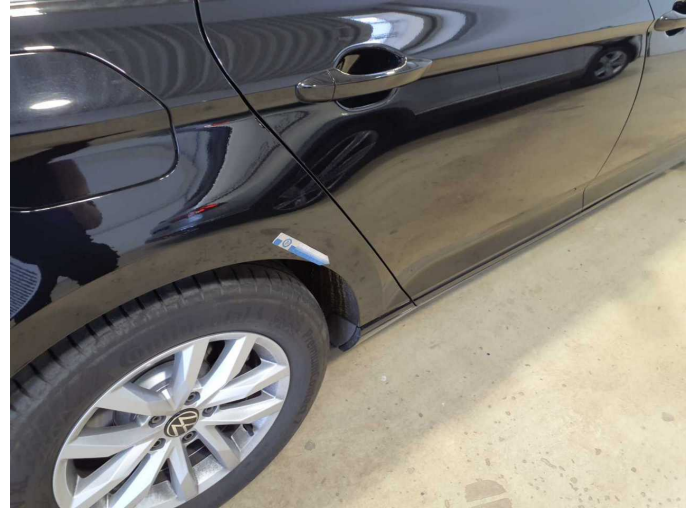
Damage 1: Wing mirror - right side: Cap - Scratch(es) - Smart repair



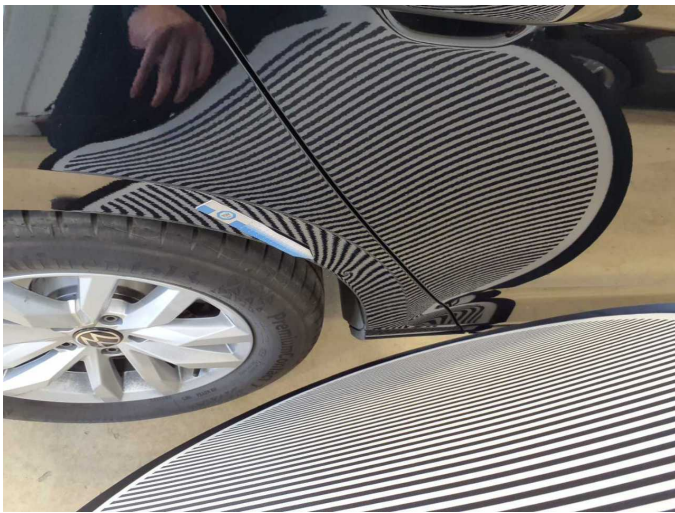
Damage 2: Boot lid / rear door: Boot lid - dent(s) - Smooth repair work



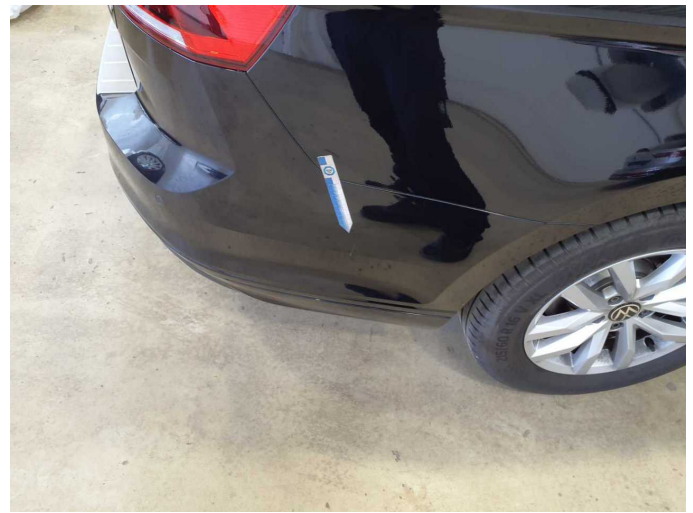
Damage 2: Boot lid / rear door: Boot lid - dent(s) - Smooth repair work



Damage 3: Side panel - rear right side: Side panel - Dent / paintcoat damage - Smart repair



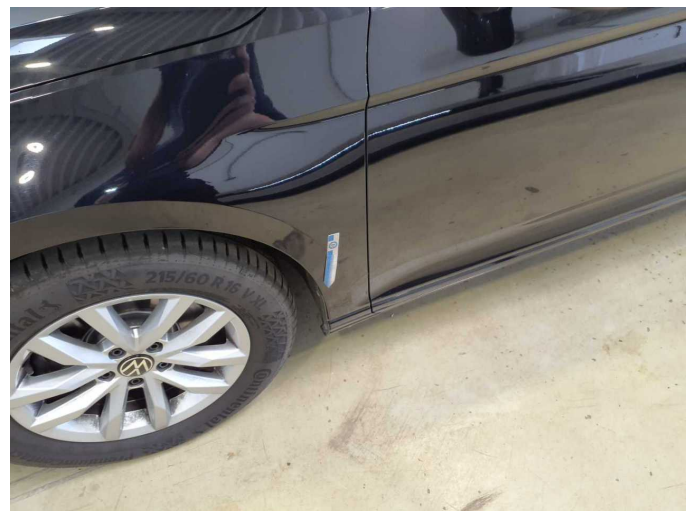
Damage 3: Side panel - rear right side: Side panel - Dent / paintcoat damage - Smart repair



Damage 4: Rear bumper: Rear bumper - Scratch(es) - Smart repair



Damage 4: Rear bumper: Rear bumper - Scratch(es) - Smart repair



Damage 5: Mudguard - left side: Mudguard - left side - Scratch(es) - Smart repair



Damage 5: Mudguard - left side: Mudguard - left side - Scratch(es) - Smart repair



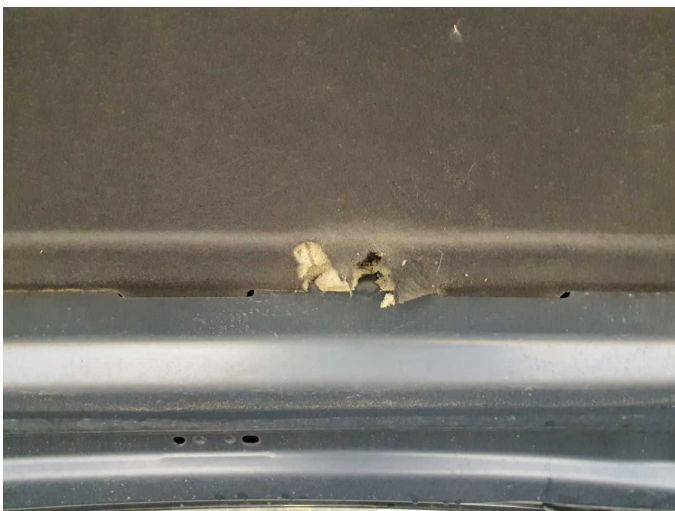
Damage 6: Cab: Insulation lining - Damage caused by marten / rodent - Replace



Damage 6: Cab: Insulation lining - Damage caused by marten / rodent - Replace



Damage 7: Bonnet: Insulation lining - Damage caused by marten / rodent - Replace



Damage 7: Bonnet: Insulation lining - Damage caused by marten / rodent - Replace



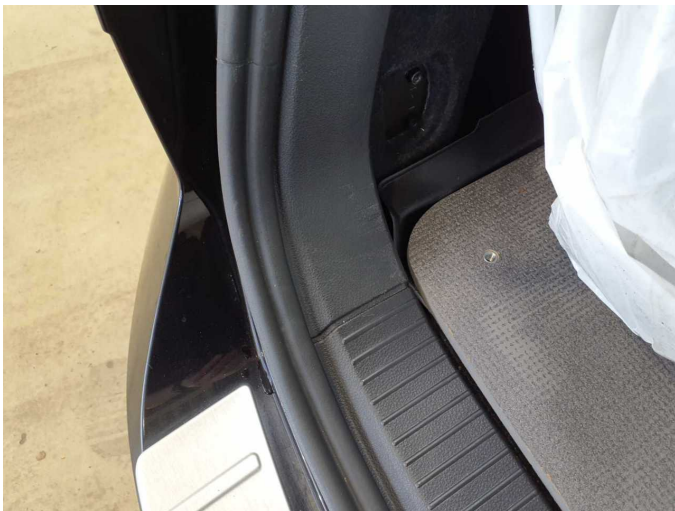
Damage 8: Trim / covers: Boot lining - Scratch(es) - Loss in value



Damage 8: Trim / covers: Boot lining - Scratch(es) - Loss in value



Damage 8: Trim / covers: Boot lining - Scratch(es) - Loss in value



Damage 8: Trim / covers: Boot lining - Scratch(es) - Loss in value



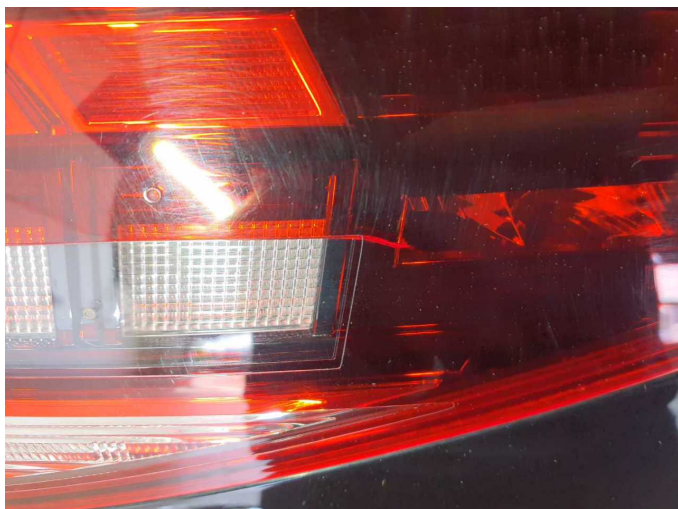
Damage 9: Trim / covers: Boot lid - interior trim - Scratch(es) - Replace



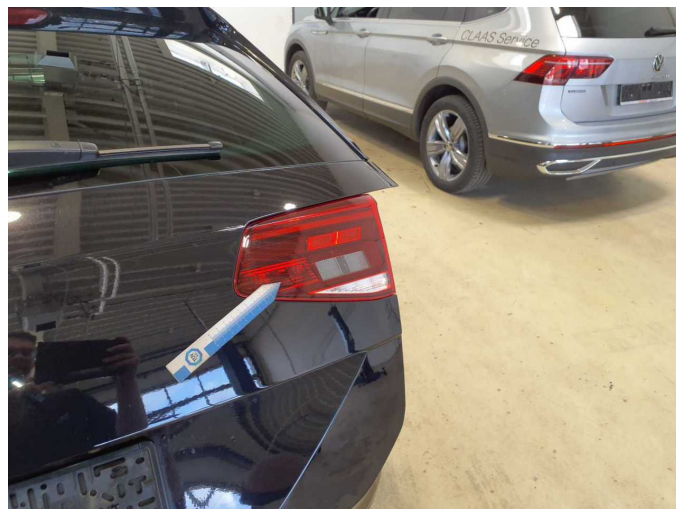
Damage 9: Trim / covers: Boot lid - interior trim - Scratch(es) - Replace



Damage 10: Tail light: Tail lamp - left side - Broken / torn - Replace



Damage 10: Tail light: Tail lamp - left side - Broken / torn - Replace



Damage 11: Tail light: Tail lamp - right side - Broken / torn - Replace



Damage 11: Tail light: Tail lamp - right side - Broken / torn - Replace



Wartungshistorie

(gemäß Auftraggeber Informationen)

Fahrgestellnummer: WVVZZZ3CZPE039605

Hersteller / Modell: VOLKSWAGEN VW Passat Variant 2.0 TDI SCR DSG Business

Datum	KM-Stand	Beschreibung
05.05.2026	123.242	AU; Batterie ern; Bremse Sonstiges; Bremsklötze hinten; Bremsklötze vorne; Bremsscheiben + Klötze h; Bremsscheiben + Klötze v; Bremsscheiben hinten; Bremsscheiben vorne; Keilrippenriemen; Systemtest/Eigendiagnose
20.03.2026	116.157	Getriebeöl ern/prüfen; Luftfiltereinsatz ern; Motoröl b. Wartung; Ölfilter ern; Regelwartungsdienst; Wartung Sonstiges
13.06.2025	86.382	Bremsflüssigkeit; Bremsflüssigkeit ern; Klimaanlage inst.; Kraftstofffilter ern; Motoröl b. Wartung; Ölfilter ern; Regelwartungsdienst; Reparatur Sonstiges; Systemtest/Eigendiagnose; Wartung Sonstiges; Wartung Sonstiges
02.04.2025	79.885	Bremse Sonstiges; Bremsklötze hinten; Bremsklötze vorne; Bremsscheiben + Klötze h; Bremsscheiben + Klötze v; Bremsscheiben hinten; Bremsscheiben vorne
09.08.2024	58.347	Motoröl b. Wartung; Ölfilter ern; Regelwartungsdienst; Wartung Sonstiges
29.12.2023	29.665	Motoröl b. Wartung; Ölfilter ern; Regelwartungsdienst; Wartung Sonstiges