

## Expertise

Protocol number: 45807099  
Order No. / Reference: 26344035  
Inspection date: 22 May 2026

Manufacturer: Mercedes-Benz

Model: 215 CDI Sprinter Doka HA RA 3665 MM 3,0 T

VIN: W1V9072231N139818



### Vehicle details

#### Manufacturer / Type / Model / Equipment

Mercedes-Benz 215 CDI Sprinter Doka HA RA 3665 MM 3,0 T

**Vehicle Identification number** W1V9072231N139818

**Mileage (Read)** 34,326 km

**First registration** 9 Apr 2021

**Number of holders** 1

**Power / Engine displacement** 110 kw / 1,950 ccm

**Fuel type / Cylinder** Diesel / 4

**Gearbox / Number of gears** Automatic / 9

**Type of drive** Rear drive

**Type of vehicle** Van

**Colour / colour code** Stahlblau (ähnlich RAL 5011)

**Doors / Seats** 4 / 6

**Upholstery type** Cloth

**Colour of upholstery** Black



## Vehicle details

<b>Maintenance booklet / proof</b>	digital proof / complete	<b>Next maintenance in</b>	209 Tag(e)
<b>Last service on / at</b>	04/2025 at 25,938 km		
<b>Key is / should be</b>	2 / 2	<b>FZG documents</b>	ZB#2 (B) was available (copy), ZB#1 (S) was not available.
		<b>Letter No.</b>	GB975831
<b>Previous damage / Accident</b>	Detectable	<b>Repainting</b>	None detectable
<b>Inspection conditions</b>	sufficient	<b>Lifting equipment / pit</b>	yes
<b>Test drive</b>	Not performed	<b>Engine function test</b>	Performed
<b>Manufacturer key number/ type code number</b>	2222 / BAU 03466		
<b>Permitted total weight</b>	3,190 kg	<b>Empty weight</b>	

## Tyres

Mounted tyres				
#	Tyre size	Type of tyre	Manufacturer	Tread depth
1)	205/75 R16 110R	All-season tyres on Steel	Continental	5mm / 5mm
2)	205/75 R16 110R	All-season tyres on Steel	Continental	2mm / 1mm
Replacement				
Typ	Tyre size	Type of tyre	Manufacturer	Tread depth
E	205/75 R16 110R C	All-season tyres on Steel	Continental	8 mm

**Legend: Tread depth information for the left tire is listed first, for the right tire it is listed second on the axle in the direction of travel.**



## Equipment

### Standard equipment

- Storage compartment above windshield
  - Rear towing eye
  - ADAPTIVE ESP (latest generation) with load- and speed-dependent driving dynamics control
  - Outdoor temperature display
  - Battery: fleece battery 12 V / 92 Ah
  - Brake lights, adaptive
  - Tachometer
  - Electric window regulator for driver and passenger door
  - Transmission: 9G-TRONIC
  - Seatbelt warning device for driver's seat
  - Instrument panel and combination instrument with various storage options
  - Communication module (LTE) for digital services
  - Headlight range control
  - Mercedes-Benz emergency call system
  - Upholstery: Cloth
  - Radio: Radio preparation
  - Tires: Tires without specified make
  - Crosswind Assist
  - Seats: Passenger seat armrest
  - Seats: Adjustable passenger seat
  - Start-stop function
  - First aid kit
  - Immobiliser
  - Central locking with radio remote control
- Storage compartment under cockpit
  - Axle ratio  $i = 3.923$
  - Driver's side airbag
  - Electrically adjustable and heated exterior mirrors, left and right
  - Hill start assist
  - Diesel particulate filter and SCR
  - Driving light assistant
  - Generator 14 V / 200 A
  - Weight variant 3,190 kg
  - Main tank 71 liters
  - KEYLESS start
  - Coat hooks in the passenger compartment
  - Paint finish: Solid color paint
  - Side marker lights (pre-wiring)
  - Breakdown management
  - Flatbed with aluminum sideboards
  - Radio: Pre-installation for digital radio DAB
  - Tires: Premium protection tires (3 years)
  - Power steering
  - Seats: Driver's seat armrest
  - Seats: Driver's seat
  - Daytime running light
  - Warning triangle
  - Heat-insulating glass

### Extra equipment

- Towbar (fixed ball head)
  - Battery: fleece battery 12 V / 70 Ah
  - COC documents
  - Window: Back wall
  - Noise measures
  - Steering wheel: Multifunction steering wheel
  - MBUX multimedia system with 7-inch touchscreen (High-resolution 7-inch touchscreen (960 x 540 pixels), AM/FM radio with dual tuner, Bluetooth connectivity with audio streaming and hands-free function, smartphone integration via Android Auto or Apple CarPlay, multimedia connection unit for connecting portable devices via a USB-C interface, 4 x 25 W output power, sound adjustment, separate volume control for audio and telephone, 2-way front speakers)
  - Tires: Continental brand
  - Spare wheel carrier with jack (under frame end)
  - Elimination of ECO start/stop function
  - Registration certificate, Part II
- 13-pin trailer socket in conjunction with a 14V/250A generator
  - Chassis for comfort and cargo protection
  - Generator 14 V / 250 A
  - Interior mirror
  - Marker lights, side
  - Navigation (linguatron voice control, Wi-Fi hotspot, multimedia connection unit for connecting portable devices via an additional USB-C interface, center fill speaker for improved sound and voice output, improved hands-free function, dual-phone operation, digital operating instructions)
  - Navigation: 3 years of free map data updates
  - Package: Acoustics in conjunction with MBUX
  - Tires: All-season tires
  - Spare wheel
  - EU underride protection
  - Heat-insulating glass with band filter on the windshield



## Brief expert findings

Documents submitted	At the time of the inspection, the vehicle registration certificate Part 2 (title) was available, but the vehicle registration certificate Part 1 (document) was not. (Copy)
VIN comparison	The vehicle identification number (VIN) was read from the vehicle and its conformity with the submitted documents was confirmed by the undersigned during the inspection.
Inspection	The inspection conditions were sufficient for the assessment of the vehicle. Lifting equipment and/or a pit were available for examining the vehicle.
Test drive	No test drive/shunting maneuver was carried out during the inspection of the vehicle.
Engine function test	An engine test run was performed.

## Value reducing factors

No.	Component group	Description
1	Door - front left side	Door seal - Loose - Un- / install
2	Front bumper	Front bumper (unpainted) - Scratch(es) - Loss in value
3	Body	B-pillar - left side - Dent / paintcoat damage - Smart repair
4	Roof	Roof (Dachkante) - Corrosion - Smart repair
5	Interior	Interior (Muffig) - Odour - Ozone treatment
6	Door - rear left side	Door - Dent / paintcoat damage - Smart repair
7	Wheel / tyres	Tyre - right (Keine Winterreifeneigenschaften) - Does not meet the leasing specifications - Replace
8	Cab	Insulation lining - Damage caused by marten / rodent - Replace
9	Body	Body (Stellenweise matt) - Paint defect - Conditioning
10	Mudguard - right side	Mudguard - right side - Scratch(es) - Paint
11	Door - rear right side	Door - Dent / paintcoat damage - Repair and paint
12	Cab	Rear panel - Corrosion - Repair and paint

## Wear and tear

No.	Component group	Description
1	Door - front left side	Door - dent(s) - No deduction
2	Vehicle glazing	Windscreen - Stone chips - No deduction
3	Sill - right side	Sill - Scratch(es) - No deduction

The vehicle shows signs of wear and tear commensurate with its age and use.

## Previous damages

No.	Previous damage	Extent of damage (Net)
1	Side - left, Professionally repaired, Invoice of repair done Non-existent, from 16 Feb 2022	3.634,27 €

## Order/Scope of Order

An order was placed to prepare a sales report for the described vehicle. This report includes the following:

- Description of key vehicle information
- Documentation of equipment features  
(*Delivery by third-party service providers*)
- Documentation of damage, defects, missing parts
- Documentation of prior damage, unrepaired prior damage, repainting
- A brief visual or functional inspection of the equipment details, if possible.  
(*Functional testing of driver assistance systems is not included in the scope of services!*)
- a photographic documentation of the vehicle



## Basis for the order

This product is based on the guidelines for vehicle returns and valuations of light commercial vehicles published by Alphabet Fleet Management GmbH. The expert makes the specific findings in each individual case objectively, within the framework of the prescribed standards, based on their own expertise.

The vehicle inspection takes place in a fully assembled, unassembled state.

Damage or defects that can only be detected during disassembly/diagnostic work or through further investigation remain within the realm of prognostic risk. An increased risk exists due to concealed defects caused by fraudulent misrepresentation and which were not identifiable by the expert.

Damage or defects resulting from normal use or wear and tear of the vehicle will be accepted in accordance with the applicable standard.

There was no explicit identification or monetary consideration of the expected features within the product.

Features which, in their nature and extent, slightly exceed normal use but do not constitute unacceptable damage, will be documented and indicated as signs of wear, if applicable.

Damage or defects that, according to the applicable standard, can no longer be attributed to normal use or wear and tear are listed under "Value Reducing Factors" in the product description.

Depending on the product specification, a monetary ID can be provided. If this takes place, the costs can be 100% or pro rata depending on the vehicle's age and mileage.

## Previous damages

Professionally repaired previous damages were found at the vehicle.



Figure 1: Diagonal front (left)



Figure 2: Diagonal front (right)



Figure 3: Diagonal rear (left)



Figure 4: Diagonal rear (right)

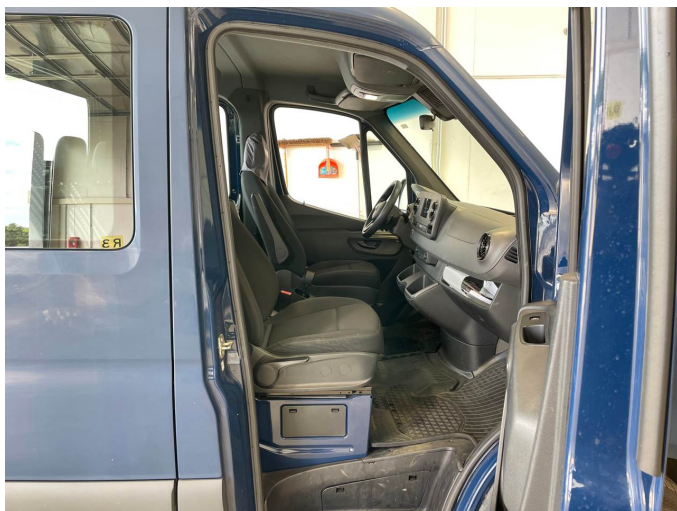


Figure 5: Interior - front

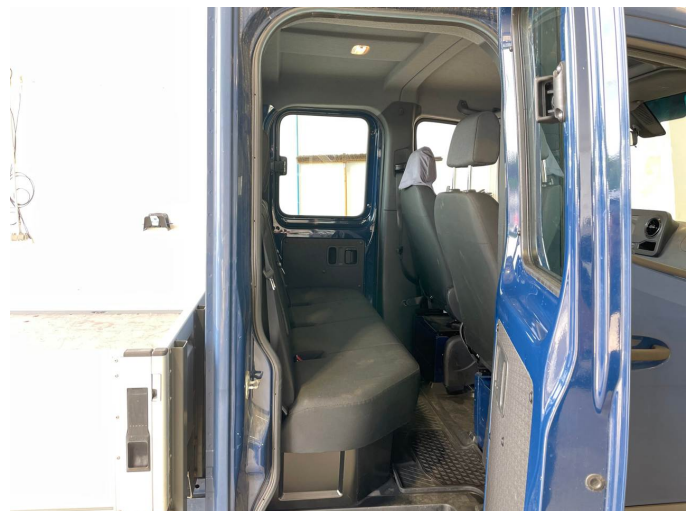


Figure 6: Interior - rear



Figure 7: Instrument cluster



Figure 8: Instrument panel



Figure 9: Interior 360° view



Figure 10: Cargo area



Figure 11: VIN



Figure 12: Mounted tyres



Figure 13: Documents



Figure 14: Navigation



Figure 15: Misc.



Figure 16: Misc.



Figure 17: Misc.



Figure 18: Misc.



Figure 19: Misc.



Figure 20: Misc.



Figure 21: Misc.

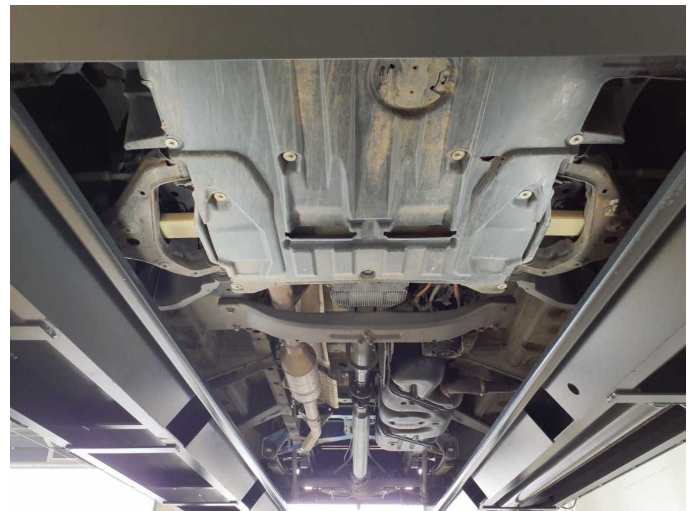


Figure 22: Misc.



Figure 23: Misc.



Figure 24: Misc.



Figure 25: Misc.



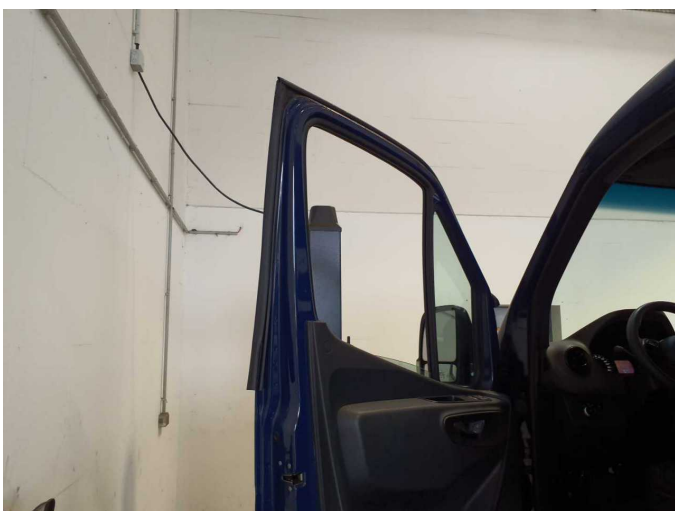
Figure 26: Misc.



Figure 27: Misc.



Figure 28: Misc.



Damage 1: Door - front left side: Door seal - Loose - Un- / install



Damage 1: Door - front left side: Door seal - Loose - Un- / install



**Damage 1:** Door - front left side: Door seal - Loose - Un- / install



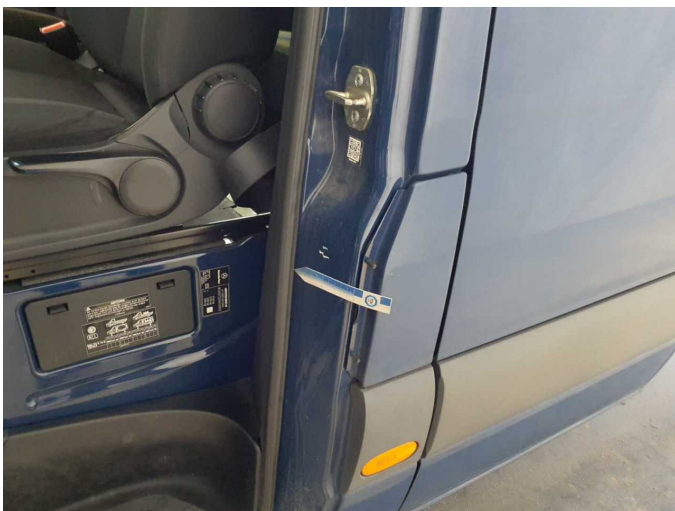
**Damage 2:** Front bumper: Front bumper (unpainted) - Scratch(es) - Loss in value



**Damage 2:** Front bumper: Front bumper (unpainted) - Scratch(es) - Loss in value



**Damage 2:** Front bumper: Front bumper (unpainted) - Scratch(es) - Loss in value



**Damage 3:** Body: B-pillar - left side - Dent / paintcoat damage - Smart repair



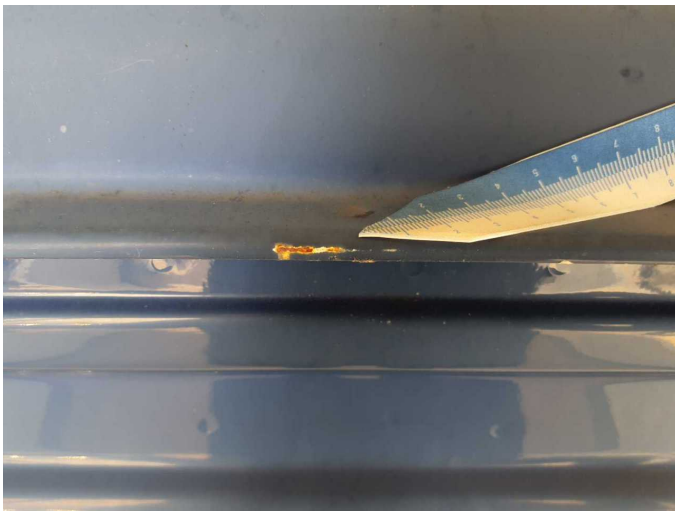
**Damage 3:** Body: B-pillar - left side - Dent / paintcoat damage - Smart repair



**Damage 3:** Body: B-pillar - left side - Dent / paintcoat damage - Smart repair



**Damage 4:** Roof: Roof (Dachkante) - Corrosion - Smart repair



**Damage 4:** Roof: Roof (Dachkante) - Corrosion - Smart repair



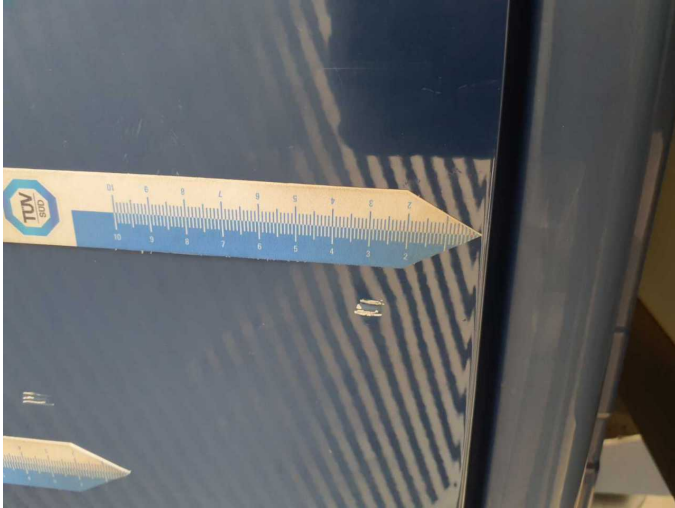
**Damage 4:** Roof: Roof (Dachkante) - Corrosion - Smart repair



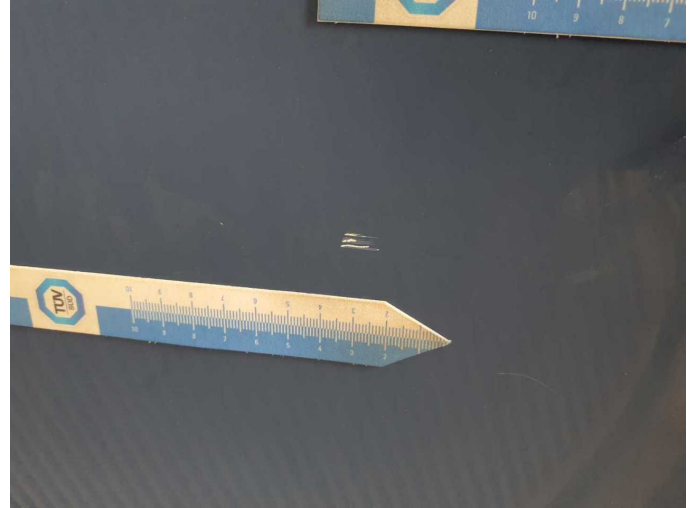
**Damage 6:** Door - rear left side: Door - Dent / paintcoat damage - Smart repair



**Damage 6:** Door - rear left side: Door - Dent / paintcoat damage - Smart repair



**Damage 6:** Door - rear left side: Door - Dent / paintcoat damage - Smart repair



**Damage 6:** Door - rear left side: Door - Dent / paintcoat damage - Smart repair



**Damage 7:** Wheel / tyres: Tyre - right (Keine Winterreifeneigenschaften) - Does not meet the leasing specifications - Replace



**Damage 7:** Wheel / tyres: Tyre - right (Keine Winterreifeneigenschaften) - Does not meet the leasing specifications - Replace



**Damage 7:** Wheel / tyres: Tyre - right (Keine Winterreifeneigenschaften) - Does not meet the leasing specifications - Replace



**Damage 7:** Wheel / tyres: Tyre - right (Keine Winterreifeneigenschaften) - Does not meet the leasing specifications - Replace



**Damage 8:** Cab: Insulation lining - Damage caused by marten / rodent - Replace



**Damage 8:** Cab: Insulation lining - Damage caused by marten / rodent - Replace



**Damage 9:** Body: Body (Stellenweise matt) - Paint defect - Conditioning



**Damage 9:** Body: Body (Stellenweise matt) - Paint defect - Conditioning



**Damage 9:** Body: Body (Stellenweise matt) - Paint defect - Conditioning



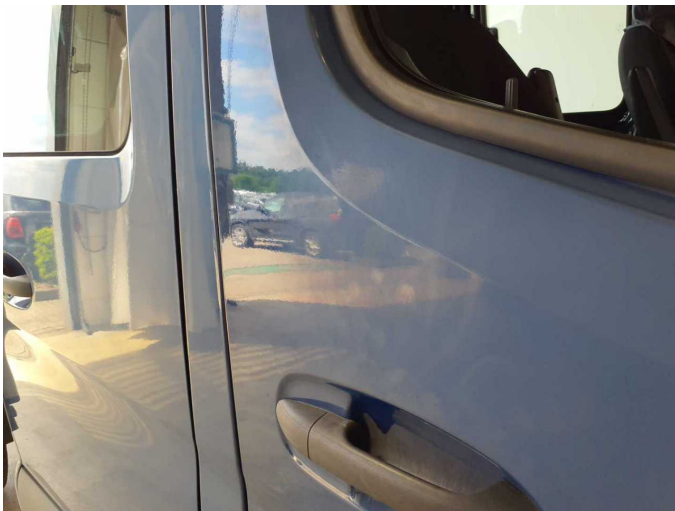
**Damage 9:** Body: Body (Stellenweise matt) - Paint defect - Conditioning



**Damage 9:** Body: Body (Stellenweise matt) - Paint defect - Conditioning



**Damage 9:** Body: Body (Stellenweise matt) - Paint defect - Conditioning



**Damage 9:** Body: Body (Stellenweise matt) - Paint defect - Conditioning



**Damage 9:** Body: Body (Stellenweise matt) - Paint defect - Conditioning



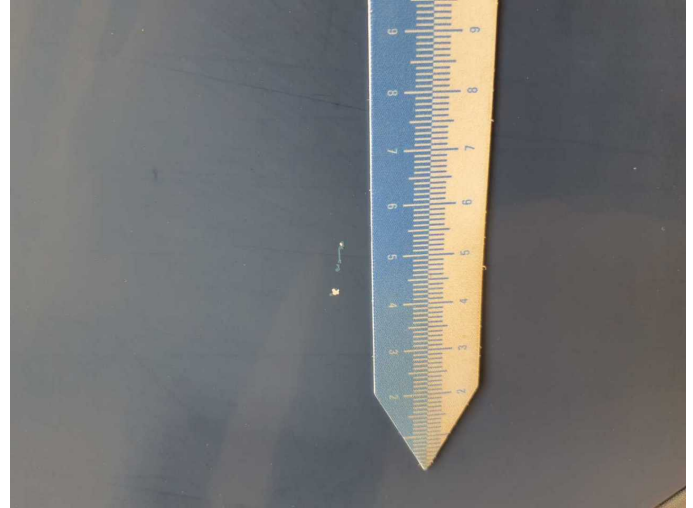
**Damage 9:** Body: Body (Stellenweise matt) - Paint defect - Conditioning



**Damage 10:** Mudguard - right side: Mudguard - right side - Scratch(es) - Paint



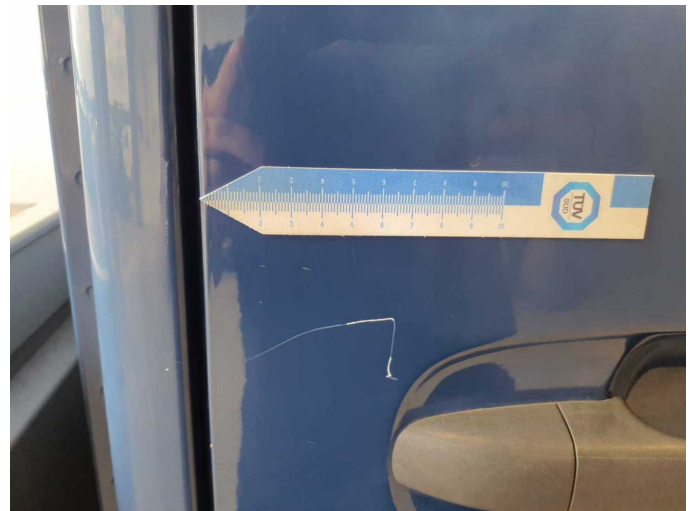
**Damage 10:** Mudguard - right side: Mudguard - right side - Scratch(es) - Paint



**Damage 10:** Mudguard - right side: Mudguard - right side - Scratch(es) - Paint



**Damage 11:** Door - rear right side: Door - Dent / paintcoat damage - Repair and paint



**Damage 11:** Door - rear right side: Door - Dent / paintcoat damage - Repair and paint



**Damage 11:** Door - rear right side: Door - Dent / paintcoat damage - Repair and paint



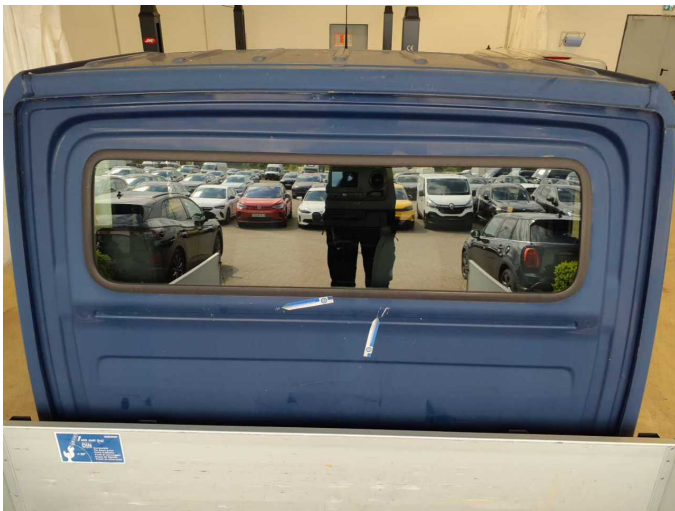
**Damage 12:** Cab: Rear panel - Corrosion - Repair and paint



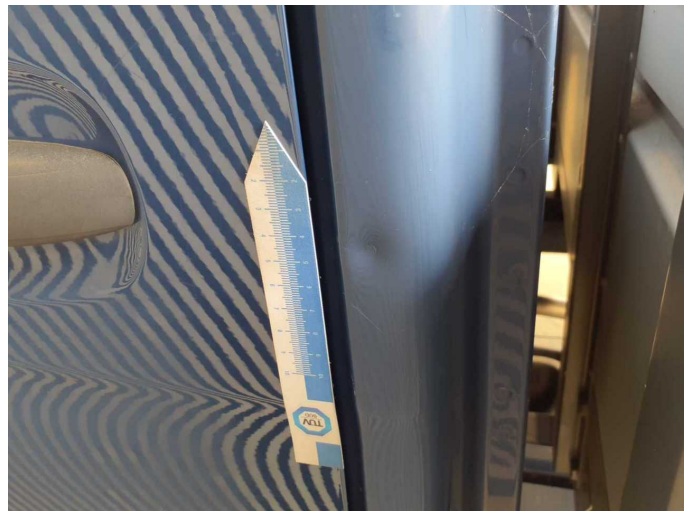
**Damage 12:** Cab: Rear panel - Corrosion - Repair and paint



**Damage 12:** Cab: Rear panel - Corrosion - Repair and paint



**Damage 12:** Cab: Rear panel - Corrosion - Repair and paint



**Damage 12:** Cab: Rear panel - Corrosion - Repair and paint



**Damage 12:** Cab: Rear panel - Corrosion - Repair and paint



# Wartungshistorie

(gemäß Auftraggeber Informationen)

Fahrgestellnummer: W1V9072231N139818

Hersteller / Modell: MERCEDES-BENZ MB 215 CDI Sprinter Standard HA 9G-Tronic

Datum	KM-Stand	Beschreibung
16.04.2025	25.938	Regelwartungsdienst
11.12.2023	15.536	Regelwartungsdienst
03.05.2022	3.904	Regelwartungsdienst