

Expertise

Protocol number: 45919116
Order No. / Reference: 26323616
Inspection date: 11 Jun 2026

Manufacturer: Volvo

Model: XC60 T6 AWD Recharge Core

VIN: LYVUZH1V3PB327490



Vehicle details

Manufacturer / Type / Model / Equipment

Volvo XC60 T6 AWD Recharge Core

Vehicle Identification number LYVUZH1V3PB327490

Mileage (Read) 89,315 km

First registration 15 May 2023

Number of holders 1

Power / Engine displacement 186 kw / 1,969 ccm

Fuel type / Cylinder Hybr.B/E ext.auf1 / 4

Gearbox / Number of gears Automatic / 8

Type of drive All-wheel drive

Type of vehicle SUV

Colour / colour code Crystal Weiß-Perleffekt

Doors / Seats 5 / 5

Upholstery type Cloth

Colour of upholstery Anthracite-Grey

TÜV SÜD Auto Partner GmbH
Wiesenring 2
04159 Leipzig

Inspection location
Hartmann Fleet Professionals GmbH
Leerenstraße 25
29683 Bad Fallingbommel



Equipment



Standard equipment

- ABS - Anti-lock Braking System
- Driver and passenger side airbags with two-stage deployment system
- Passenger side airbag can be deactivated
- Airbag, side airbags for driver and front passenger and head/shoulder airbags for all occupants
- Android infotainment system (9" touchscreen (22.9 cm diagonal) - Bluetooth hands-free system incl. audio streaming - Digital vehicle owner's manual - Digital radio reception (DAB+) - 2 USB-C ports (compatible with Apple iPod/iPhone/iPad))
- Hill Start Assist (HSA)
- LED turn signals integrated into the exterior mirrors
- Third brake light (emergency brake lights (brake lights flash rapidly in case of heavy deceleration; hazard warning lights are automatically activated at speeds below 10 km/h))
- CleanZone air quality system with activated carbon filter (automatic recirculation and pre-ventilation of the interior when the vehicle is unlocked)
- Digital Services (Google Services (includes Google Maps, Google Assistant, Google Play Store and unlimited data) - Volvo On Call (includes, among other things, alerting the Volvo On Call service center at the touch of a button and additional convenience services via the Volvo CarsApp))
- Rear parking assist with automatic braking intervention (rear)
- Electronic differential lock
- Electric windows front and rear (with auto-down and auto-up function)
- Automatic emergency braking (emergency braking mechanism after the deployment of the airbags or seatbelt pretensioners to prevent secondary accidents)
- Automatic tailgate (electric)
- Interior lighting (headliner, front reading lights, front ambient lighting, front footwell, storage compartment behind center console, glove compartment and luggage compartment)
- Keyless Start (electronic engine start system)
- Child safety lock for the rear doors (electric)
- Automatic climate control with separate temperature control for driver and front passenger (and additional air vents for the 2nd row of seats (integrated in the B-pillar))
- Charging cable Schuko/Type 2 (Mode 2) (7 m length, 1-phase, 10A (for connection to a standard 230-volt household socket))
- Steering wheel: Multifunction buttons on the steering wheel
- Front center armrest with integrated storage compartment and cup holders
- Package: Parking Assistance (front and rear parking aid with automatic braking intervention (rear))
- Electric parking brake
- Parking ticket holder
- Upholstery: Premium textile comfort seats (Insert: Iron Ore - Headliner: Light Beige)
- Acoustic Vehicle Alerting System (AVAS) (Acoustic pedestrian/cyclist protection through artificially generated driving noises in the speed range up to 20 km/h)
- Airbag, driver's knee airbag
- Active safety belts with belt tensioners
- All-wheel drive (AWD) (depending on the driving mode)
- Electrically folding exterior mirrors
- Electrically adjustable exterior mirrors
- Heated exterior mirrors and rear window (automatic)
- Outdoor temperature display
- Hill Descent Control (HDC)
- Fog sensor for automatic activation of the defroster function
- On-board computer (with vehicle control functions)
- Chrome applications on the rear of the vehicle
- Chrome applications in the front bumper
- Chrome trim strip in the door sill area with Recharge lettering
- Roof edge spoiler
- Aluminum roof rails (integrated)
- Deactivation of the high-voltage battery (in case of a collision)
- Digital instrumentation 2nd generation (Full graphic 12.3" driver display (31.2 cm diagonal) with two variable round instruments and information display (e.g. for navigation map view))
- Aluminum door sill plates with Recharge lettering, front
- Electronic Stability Control (ESC)
- Enhanced air quality system with fine dust filtration according to air quality standard PM2.5
- Chrome window surround
- Luggage compartment partition net
- Transmission: 8-speed automatic transmission
- Front seat belt height adjustment
- Interior and exterior mirrors automatically dimming
- Intelligent driver information system (delays incoming calls or vehicle information in dangerous situations)
- ISOFIX mounting for the outer rear seats
- Keyless Drive (electronic access system) (with sensor-controlled tailgate, illuminated door handles and floor lights)
- Headrests (5) front and rear
- Paint finish: Solid
- Charging box under the cargo floor
- Plastic loading sill protector in the luggage compartment
- Cargo area roller blind
- Steering wheel adjustable for height and reach
- Illuminated makeup mirror for driver and front passenger
- Emergency brake lights (brake lights flash rapidly during heavy deceleration; hazard warning lights are automatically activated below 10 km/h)
- Panoramic glass sliding sunroof with lifting function (electric) (with integrated, continuously adjustable sunshade)
- Radio: Audio system High Performance Sound (220 watts of power - 10 speakers)



- Radio accessories: Subwoofer
- Rain sensor
- Tire pressure monitoring system (with tire-specific pressure loss warning)
- Wheels: 18" alloy wheels, 5-twin-spoke design, diamond cut/high-gloss black (with all-season tires 235/60 R18 with rims 7.5 Jx 18")
- Rear view camera
- Safety Assistance (Automatic emergency braking system with detection of vehicles, cyclists, pedestrians and large animals including intersection braking assistant and emergency braking assistant for oncoming traffic - Connected Safety - Driver Alert - Attention warning - Distance warning - Variable speed limiter - Cruise control - Lane Keeping Aid (LKA) - Active lane keeping assistant - Oncoming Lane Mitigation - Ready to Drive notification - Road Edge Detection - Road Sign Information (RSI) - Traffic sign recognition)
- Seats: Lumbar support (2-way electrically adjustable) for driver and front passenger seats
- Start/Stop technology
- Phone: Inductive smartphone charging system
- Glazing: Colored glazing
- Full LED headlights "Thor's Hammer" ACTIVE HIGH BEAM
- Warning tone/indicator when seat belts are not fastened (for all seats)

- Radio accessories: Two USB-C ports on the back of the center console
- Run-off Road Protection (preventive protection system in case of unintentional leaving of the road or impending rollovers and door unlocking)
- Wheels: Tire sealant (Incl. 12-volt compressor, maximum speed 80 km/h)
- Rear seats in a 40/60 split or completely foldable with pass-through function
- Whiplash Protection System (WHIPS) (including immersion protection on all seats and energy-absorbing front seat cushions)
- Speed-sensitive power steering
- Safety braking system with disc brakes all around (internally ventilated) (automatic brake system pre-tensioning, brake assist and automatic hold function)
- Seats: Driver and front passenger seats height adjustable (electrically) (including manual tilt adjustment for the driver's seat)
- Electric auxiliary heater with timer
- Power socket
- First aid kit and warning triangle
- Lashing eyes in the luggage compartment (foldable)
- Preparation for Trailer Stability Assist (TSA)
- Immobiliser
- Central locking system with two remote controls and integrated emergency keys

Extra equipment

- Towbar (semi-electric)
- Paint finish: Crystal White Pearl Effect
- Seats: Child seats (2-stage) integrated into the outer rear seats

- Windscreen, heater
- Package: Winter Package (front seat heating - rear seat heating - steering wheel heating)
- Glazing: Side and rear windows tinted (from the B-pillar back)

Brief expert findings

Documents submitted	At the time of the inspection, the vehicle registration certificate Part 2 (title) was available, but the vehicle registration certificate Part 1 (document) was not. (Copy)
VIN comparison	The vehicle identification number (VIN) was read from the vehicle and its conformity with the submitted documents was confirmed by the undersigned during the inspection.
Inspection	The inspection conditions were sufficient for the assessment of the vehicle. No lifting equipment or pit was available for inspecting the vehicle. Therefore, inspection of the vehicle's underside was only possible to a limited extent.
Test drive	No test drive/shunting maneuver was carried out during the inspection of the vehicle.
Engine function test	An engine test run was performed.

Value reducing factors

No.	Component group	Description
1	Wing mirror - right side	Cap - Scratch(es) - Smart repair
2	Engine	Engine cover - Damage caused by marten / rodent - Replace
3	Misc.	Inspection / maintenance - Due - Perform



Wear and tear

No.	Component group	Description
1	Vehicle glazing	Windscreen - Stone chips - No deduction
2	Bonnet	Bonnet - Stone chips - No deduction
3	Front bumper	Front bumper - Stone chips - No deduction
4	Rear bumper	Rear bumper - Scratch(es) - No deduction

The vehicle shows signs of wear and tear commensurate with its age and use.

Order/Scope of Order

An order was placed to prepare a sales report for the described vehicle. This report includes the following:

- Description of key vehicle information
- Documentation of equipment features
(*Delivery by third-party service providers*)
- Documentation of damage, defects, missing parts
- Documentation of prior damage, unrepaired prior damage, repainting
- A brief visual or functional inspection of the equipment details, if possible.
(*Functional testing of driver assistance systems is not included in the scope of services!*)
- a photographic documentation of the vehicle

Basis for the order

This product is based on the guidelines for vehicle returns and valuations published by Alphabet Fleet GmbH. The expert makes the specific findings in each individual case objectively, within the framework of the prescribed standards, based on their own expertise.

The vehicle inspection takes place in a fully assembled, unassembled state.

Damage or defects that can only be detected during disassembly/diagnostic work or through further investigation remain within the realm of prognostic risk. An increased risk exists due to concealed defects caused by fraudulent misrepresentation and which were not identifiable by the expert.

Damage or defects resulting from normal use or wear and tear of the vehicle will be accepted in accordance with the applicable standard.

There was no explicit identification or monetary consideration of the expected features within the product.

Features which, in their nature and extent, slightly exceed normal use but do not constitute unacceptable damage, will be documented and indicated as signs of wear, if applicable.

Damage or defects that, according to the applicable standard, can no longer be attributed to normal use or wear and tear are listed under "Value Reducing Factors" in the product description.

Depending on the product specification, a monetary ID can be provided. If this takes place, the costs can be 100% d or pro rata depending on the vehicle's age and mileage.

Comments

- Winterradsatz ist kein Bestandteil des Auslieferungsumfangs.



Figure 1: Diagonal front (left)



Figure 2: Diagonal front (right)



Figure 3: Diagonal rear (left)



Figure 4: Diagonal rear (right)



Figure 5: Interior - front



Figure 6: Interior - rear



Figure 7: Instrument cluster



Figure 8: Instrument panel



Figure 9: Interior 360° view



Figure 10: Cargo area



Figure 11: VIN



Figure 12: Mounted tyres



Figure 13: Documents

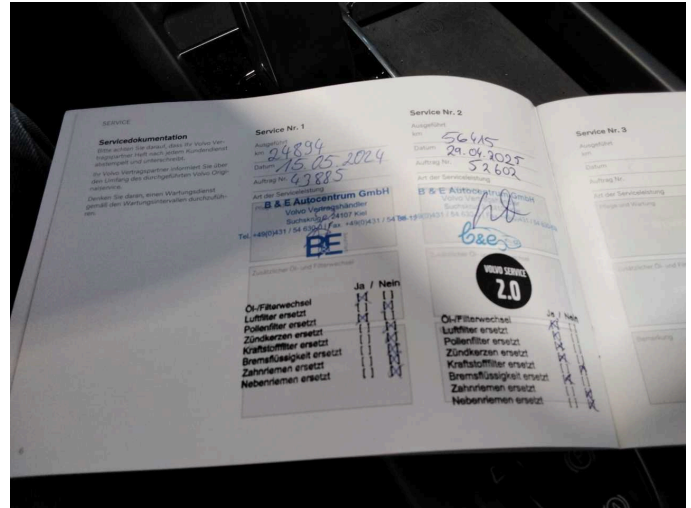


Figure 14: Documents



Figure 15: Additional tyres



Figure 16: Additional tyres

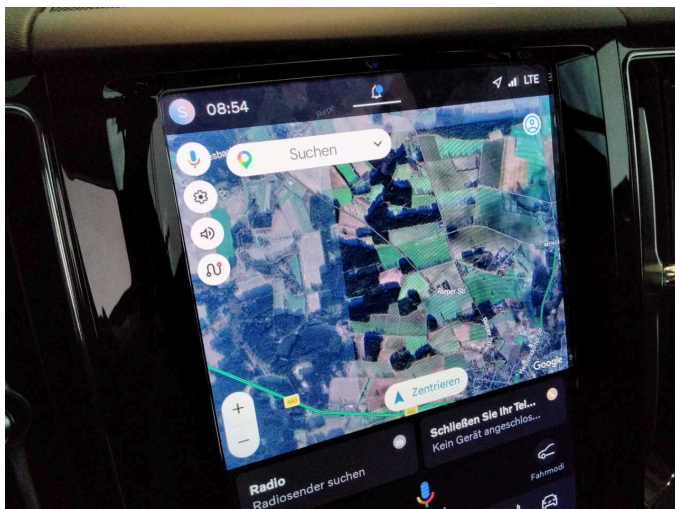


Figure 17: Navigation

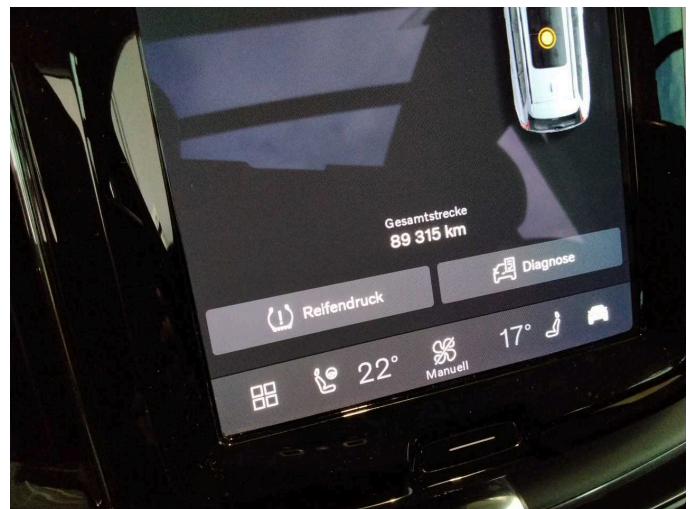


Figure 18: Misc.

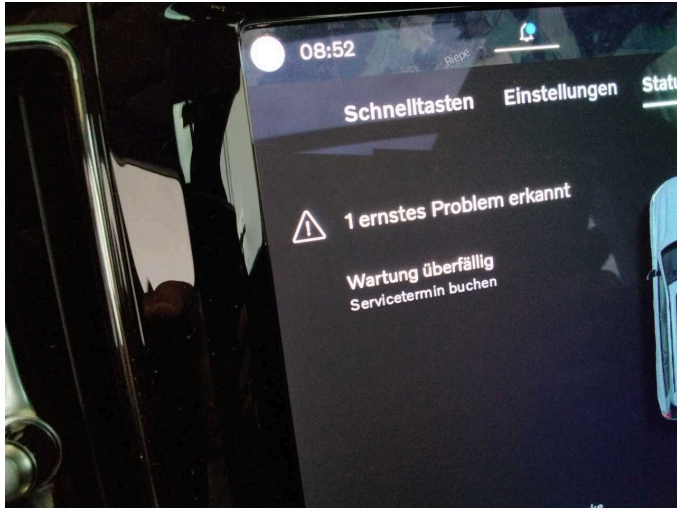


Figure 19: Misc.



Figure 20: Misc.

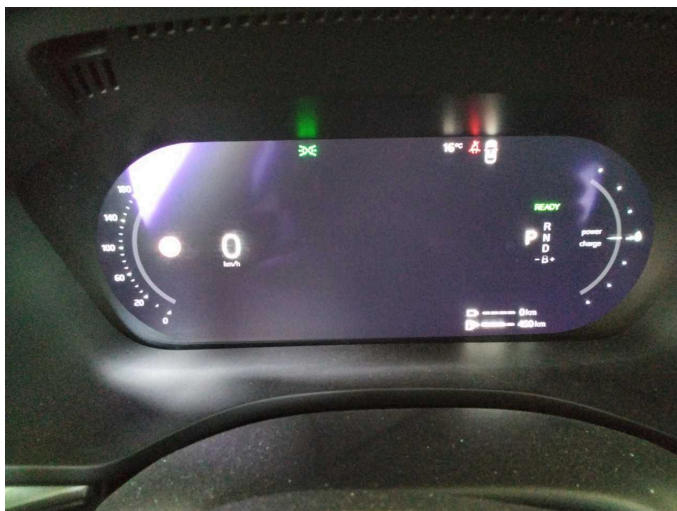


Figure 21: Misc.

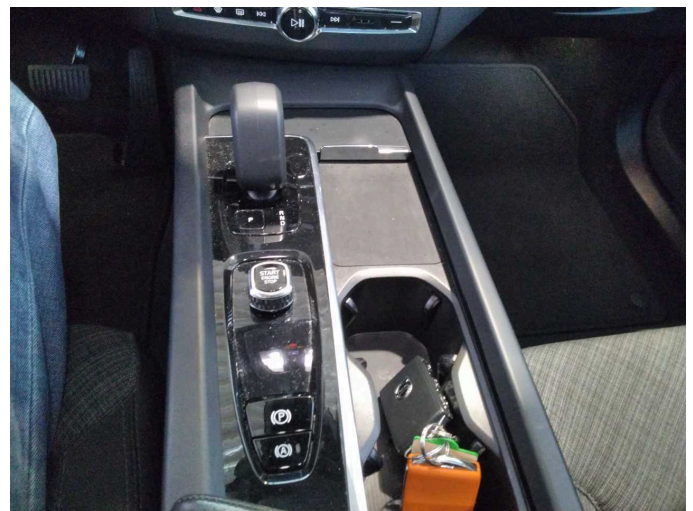


Figure 22: Misc.



Figure 23: Misc.



Figure 24: Misc.



Figure 25: Misc.



Figure 26: Misc.



Figure 27: Misc.



Figure 28: Misc.

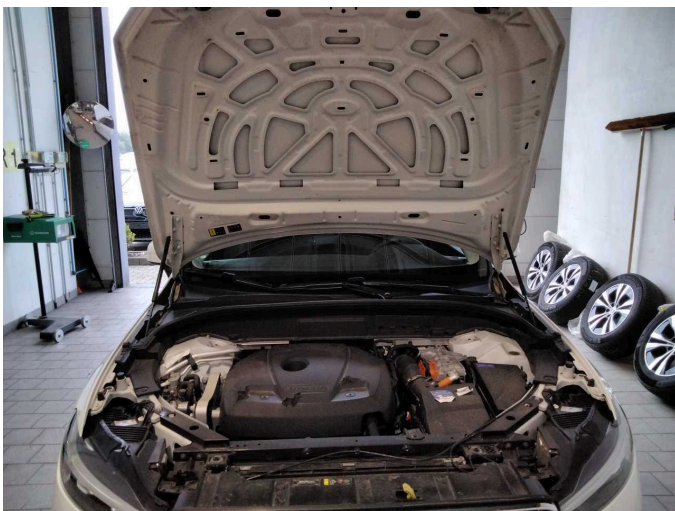


Figure 29: Misc.



Figure 30: Misc.



Figure 31: Misc.



Figure 32: Misc.

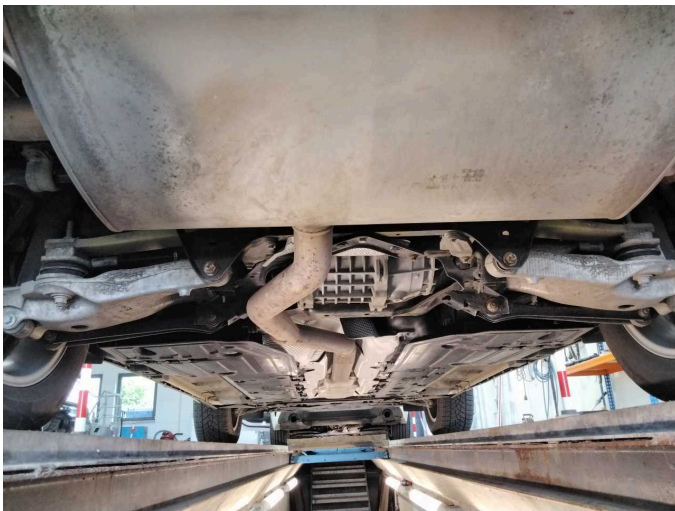
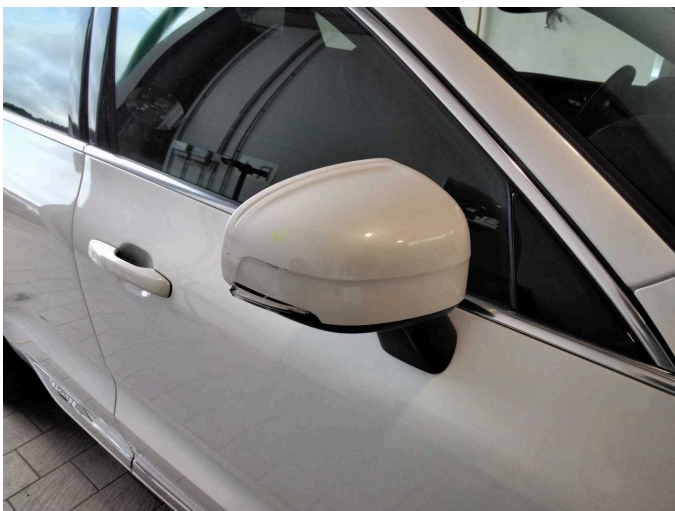


Figure 33: Misc.



Figure 34: Misc.



Damage 1: Wing mirror - right side: Cap - Scratch(es) - Smart repair



Damage 1: Wing mirror - right side: Cap - Scratch(es) - Smart repair



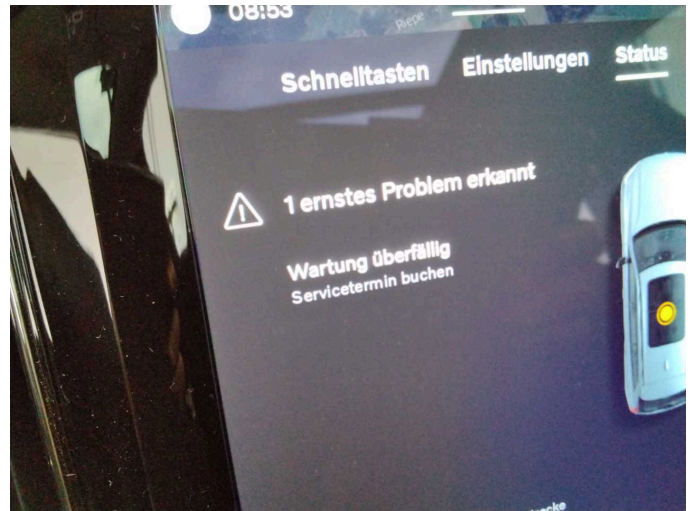
Damage 2: Engine: Engine cover - Damage caused by marten / rodent - Replace



Damage 2: Engine: Engine cover - Damage caused by marten / rodent - Replace



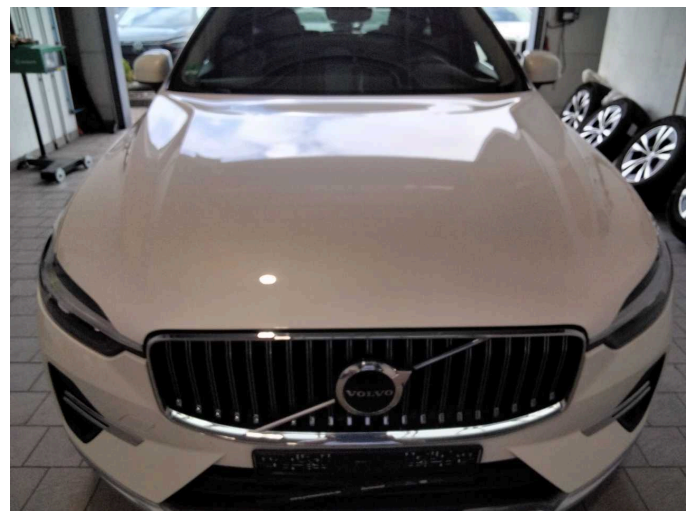
Damage 2: Engine: Engine cover - Damage caused by marten / rodent - Replace



Damage 3: Misc.: Inspection / maintenance - Due - Perform



Wear and tear 1: Vehicle glazing: Windscreen - Stone chips - No deduction



Wear and tear 2: Bonnet: Bonnet - Stone chips - No deduction



Wear and tear 3: Front bumper: Front bumper - Stone chips - No deduction



Wear and tear 4: Rear bumper: Rear bumper - Scratch(es) - No deduction