

Expertise

Protocol number: 46215766
Order No. / Reference: 26494609
Inspection date: 19 Jun 2026

Manufacturer: Skoda

Model: Kodiaq 2.0 TDI 4x4 DSG Sportline

VIN: TMBLN7NS6R8038705



Vehicle details

Manufacturer / Type / Model / Equipment

Skoda Kodiaq 2.0 TDI 4x4 DSG Sportline

Vehicle Identification number TMBLN7NS6R8038705

Mileage (Read) 189,967 km

First registration 4 Apr 2024

Number of holders 1

Power / Engine displacement 147 kw / 1,968 ccm

Fuel type / Cylinder Diesel / 4

Gearbox / Number of gears Automatic / 7

Type of drive All-wheel drive

Type of vehicle SUV

Colour / colour code Graphite Grau Metallic

Doors / Seats 5 / 5

Upholstery type Leather

Colour of upholstery Black

Vehicle with smoke odor no



Vehicle details			
Maintenance booklet / proof	digital proof / complete	Next maintenance in	651 Tag(e)
Last service on / at	04/2026 at 187,642 km		
Key is / should be	2 / 2	FZG documents	ZB#2 (B) was available (copy), ZB#1 (S) was not available.
		Letter No.	HB672893
Previous damage / Accident	None detectable	Repainting	None detectable
Inspection conditions	Conditional: Light/moisture/dirt	Lifting equipment / pit	No
Test drive	short drive on the company premises	Engine function test	Performed
Manufacturer key number/ type code number	8004 / AVW 00795		
Emission standard	EURO6;WLTP;AP;PI/CI; M, N1 I	fine dust sticker	
Permitted total weight	2,410 kg	Empty weight	

Tyres

Mounted tyres				
#	Tyre size	Type of tyre	Manufacturer	Tread depth
1)	235/55 R18 104H	Winter tyres on Light alloy	Pirelli	4mm / 4mm
2)	235/55 R18 104H	Winter tyres on Light alloy	Pirelli	6mm / 6mm
Additional tyres				
#	Tyre size	Type of tyre	Manufacturer	Tread depth
1)	235/50 R19 99V	Summer tyres on Light alloy	Hankook	3mm / 3mm
2)	235/50 R19 99V	Summer tyres on Light alloy	Hankook	6mm / 6mm
Replacement				
Typ	Tyre size	Type of tyre	Manufacturer	Tread depth
	Tirefit	Expiration date 12/2027		

Legend: Tread depth information for the left tire is listed first, for the right tire it is listed second on the axle in the direction of travel.

TÜV SÜD Auto Partner GmbH
Wiesenring 2
04159 Leipzig

Inspection location
Hartmann Fleet Professionals GmbH
Leerenstraße 25
29683 Bad Fallingbommel



Equipment



Standard equipment

- 12V socket in the center console and in the trunk
- Storage compartments behind the wheel arches in the trunk
- Airbag, driver's knee airbag
- Airbag, front side airbags
- Permanent all-wheel drive
- Traction control (ASR)
- Electrically folding exterior mirrors including interior and driver's side mirrors with automatic dimming
- Hill start assist
- Hydraulic brake assist (HBA)
- Black headliner
- Dark Carbon decorative inlay
- Digital Cockpit (8")
- Third brake light
- eCall
- Electronic transverse differential lock (XDS+)
- Driving light assistant and rain sensor
- Chassis: Adaptive chassis DCC including driving profile selection
- Front radar assistant including city emergency braking function with pedestrian detection
- Closed storage compartment on the driver's side
- Transmission: 7-speed dual-clutch transmission (DSG)
- Illuminated glove compartment
- Climatronic air conditioning (2-zone)
- Boot cover, roll-up and removable
- Paint finish: Special paint finish, solid color
- LED ambient lighting
- LED taillights in crystal glass look with animated turn signals
- Reading lights at the front of the headliner
- Rear center armrest with cup holders
- Engine drag torque control (MSR)
- Fog lights with integrated LED daytime running lights
- Stainless steel pedal design
- Progressive steering
- Radio accessories: 8 speakers
- Radio accessories: Wireless SmartLink
- Wheels: 19" alloy wheels Trigrav anthracite polished
- Heated windshield washer nozzles, front
- Headlights washer / wiper system
- Kodiaq seat belts
- Seats: Adjustable lumbar support in the front seats
- Seats: Height-adjustable front seats
- Seats: Remote release of the rear seat backrests (2nd row) in the boot
- Speed limiter
- Bumpers painted in body color
- Telephone: Convenient hands-free telephone system including phone box
- Lashing eyes in the trunk
- Central locking with remote control
- Storage compartment on the left wheel arch
- front aero windshield wipers
- Airbag, driver and passenger
- Airbag, head airbags
- Allergen filter
- Anti-lock braking system (ABS)
- Dashboard in black / black, door trim in black with microfiber inlay
- Electrically adjustable and heated exterior mirrors with integrated side indicators
- Care Connect: Proactive services (10-year term)
- Roof rails, black
- Diesel particulate filter
- Tachometer
- Easy Start (start-stop button)
- Electronic parking brake including auto-hold function
- ESC Electronic Stability Control
- Driving profile selection
- Electric windows front and rear
- High Beam Assist (Light Assist)
- front and rear floor mats
- Front and rear footwell lighting
- Cruise control
- Tinted windows
- Isofix anchorage on the outer rear seats including top tether
- Front headrests are fixed, rear headrests are height-adjustable.
- LED matrix headlights and dynamic high beam assist (Light Assist)
- Steering wheel: Sport leather steering wheel with multifunction buttons including paddle shifters.
- Front center armrest, including storage compartment
- Multi-collision brake
- Rear parking sensors
- Upholstery: Microfiber Sport-Black
- Radio: Bolero infotainment system
- Radio accessories: Digital radio reception DAB+
- Tire pressure monitoring
- Rear seat backrest split 60:40, foldable, longitudinally adjustable, backrest angle adjustable
- Electromechanical power steering
- Seats: Heated front and outer rear seats
- Seats: Electrically adjustable front seats with memory function
- Skoda Care Connect
- Sun visor on driver and passenger side with illuminated vanity mirror
- Sunset
- Front door sill trims
- Variable fastening concept in the trunk
- Immobiliser



Extra equipment

- Swiveling trailer hitch (with electric release, including trailer stabilization)
- Paint finish: Metallic / Pearl effect
- Steering wheel: Heated sports steering wheel including paddle shifters (height and reach adjustable leather steering wheel with multifunction buttons)
- Upholstery: Leather interior with ventilated front seats (including manual seat extension - seat surfaces made of fine nappa leather, combined with high-quality materials)
- Rear view camera
- Windscreen, wirelessly heated
- Traveller Plus (DSG) assistance system (Predictive Adaptive Cruise Control pACC (control range up to 210 km/h) - Lane Assist - Adaptive Lane Guidance - Park Assist - Traffic Jam and Emergency Assist - Traffic Sign Recognition)
- Package: Business Columbus (Sportline) (Dynamic radio navigation system Columbus - 9.2" capacitive color display - Digital Cockpit Plus (10") - Driver fatigue detection - 230V socket and a USB charging port (Type-C) on the back of the front center armrest - KESSY keyless entry - Electric tailgate operation including comfort opening - Luggage net partition - Infotainment Online (3-year subscription))

Brief expert findings

Documents submitted	At the time of the inspection, the vehicle registration certificate Part 2 (title) was available, but the vehicle registration certificate Part 1 (document) was not. (Copy)
VIN comparison	The vehicle identification number (VIN) was read from the vehicle and its conformity with the submitted documents was confirmed by the undersigned during the inspection.
Inspection	A proper visual inspection of the paintwork and bodywork was only possible to a limited extent due to insufficient lighting conditions/dampness or dirt. No lifting equipment or pit was available for inspecting the vehicle. Therefore, inspection of the vehicle's underside was only possible to a limited extent.
Test drive	A short maneuvering and shunting exercise was carried out on the company premises.
Engine function test	An engine test run was performed.

Value reducing factors

No.	Component group	Description
1	Trim / covers	Carpet - front left side - Damaged - Smart repair
2	Boot lid / rear door	Boot lid - dent(s) - Smooth repair work
3	Bonnet	Bonnet - dent(s) - Smooth repair work

Wear and tear

No.	Component group	Description
1	Bonnet	Bonnet - Stone chips - No deduction
2	Front bumper	Front bumper - Stone chips - No deduction
3	Vehicle glazing	Windscreen - Stone chips - No deduction
4	Vehicle glazing	Rear window - Scratch(es) - No deduction

The vehicle shows signs of wear and tear commensurate with its age and use.



Paint coat thickness measurement

Roof	108 µm	Roof rail - left side	115 µm
Roof rail - right side	107 µm	Boot lid / rear door	104 µm
Mudguard - left side	112 µm	Mudguard - right side	126 µm
Bonnet	124 µm	Sill - left side	77 µm
Sill - right side	62 µm	Side panel - rear left side	105 µm
Side panel - rear right side	114 µm	Door - rear left side	112 µm
Door - rear right side	111 µm	Door - front left side	109 µm
Door - front right side	100 µm		

Order/Scope of Order

An order was placed to prepare a sales report for the described vehicle. This report includes the following:

- Description of key vehicle information
- Documentation of equipment features
(*Delivery by third-party service providers*)
- Documentation of damage, defects, missing parts
- Documentation of prior damage, unrepaired prior damage, repainting
- A brief visual or functional inspection of the equipment details, if possible.
(*Functional testing of driver assistance systems is not included in the scope of services!*)
- a photographic documentation of the vehicle

Basis for the order

This product is based on the guidelines for vehicle returns and valuations published by Alphabet Fleet GmbH. The expert makes the specific findings in each individual case objectively, within the framework of the prescribed standards, based on their own expertise.

The vehicle inspection takes place in a fully assembled, unassembled state.

Damage or defects that can only be detected during disassembly/diagnostic work or through further investigation remain within the realm of prognostic risk. An increased risk exists due to concealed defects caused by fraudulent misrepresentation and which were not identifiable by the expert.

Damage or defects resulting from normal use or wear and tear of the vehicle will be accepted in accordance with the applicable standard.

There was no explicit identification or monetary consideration of the expected features within the product.

Features which, in their nature and extent, slightly exceed normal use but do not constitute unacceptable damage, will be documented and indicated as signs of wear, if applicable.

Damage or defects that, according to the applicable standard, can no longer be attributed to normal use or wear and tear are listed under "Value Reducing Factors" in the product description.

Depending on the product specification, a monetary ID can be provided. If this takes place, the costs can be 100% d or pro rata depending on the vehicle's age and mileage.

Previous damages

No apparent prior damage that had been repaired could be found on the vehicle.

Comments

-Der montierte Winterradsatz ist kein Bestandteil des Auslieferungsumfangs.



Figure 1: Diagonal front (left)



Figure 2: Diagonal front (right)



Figure 3: Diagonal rear (left)



Figure 4: Diagonal rear (right)



Figure 5: Interior - front



Figure 6: Interior - rear



Figure 7: Instrument cluster



Figure 8: Instrument panel



Figure 9: Cargo area

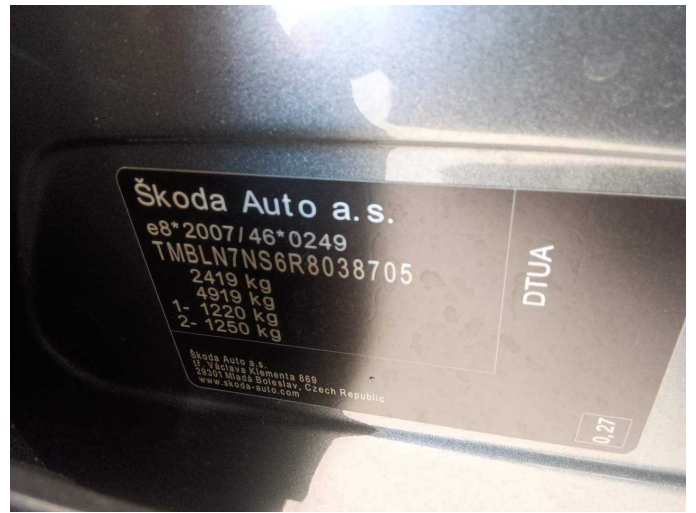


Figure 10: VIN



Figure 11: Mounted tyres

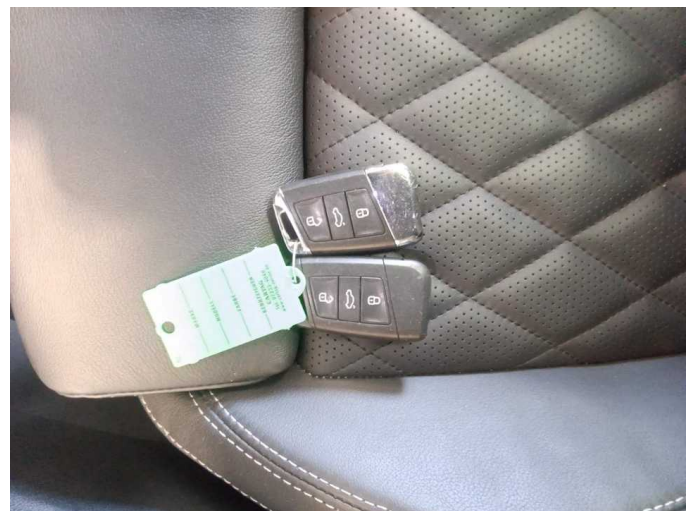


Figure 12: Documents



Figure 13: Documents



Figure 14: Documents



Figure 15: Documents



Figure 16: Additional tyres



Figure 17: Additional tyres



Figure 18: Additional tyres



Figure 19: Additional tyres



Figure 20: Additional tyres



Figure 21: Additional tyres



Figure 22: Navigation

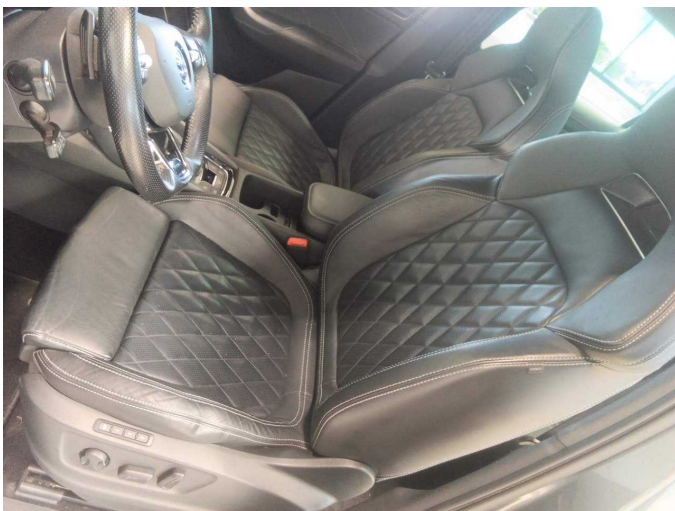


Figure 23: Misc.



Figure 24: Misc.



Figure 25: Misc.



Figure 26: Misc.



Figure 27: Misc.



Figure 28: Misc.



Figure 29: Misc.



Figure 30: Misc.



Figure 31: Misc.



Figure 32: Misc.



Figure 33: Misc.



Figure 34: Misc.



Figure 35: Misc.



Figure 36: Misc.



Figure 37: Misc.



Figure 38: Misc.



Figure 39: Misc.



Figure 40: Misc.

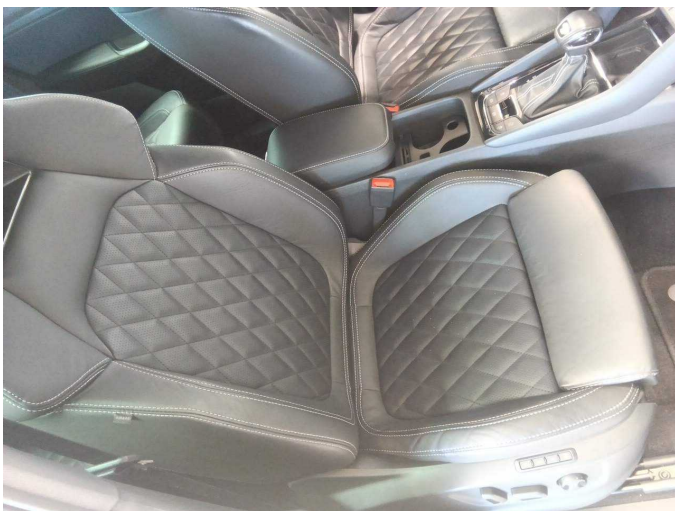


Figure 41: Misc.



Figure 42: Misc.



Figure 43: Misc.



Figure 44: Misc.



Figure 45: Misc.



Figure 46: Misc.

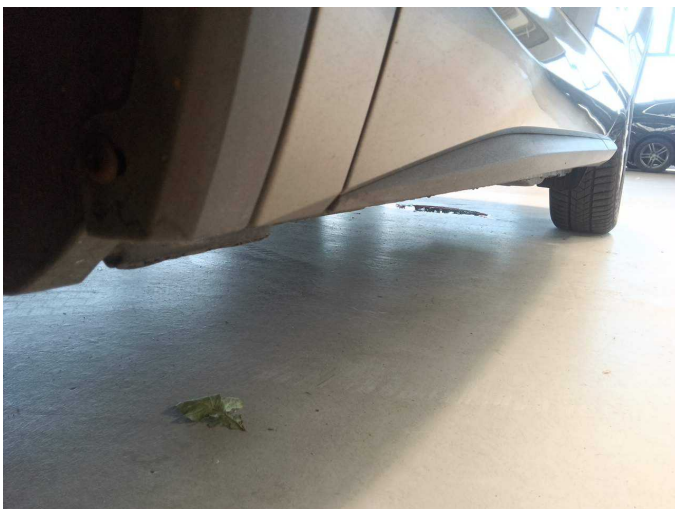


Figure 47: Misc.



Figure 48: Misc.



Figure 49: Misc.



Figure 50: Misc.



Figure 51: Misc.



Figure 52: Misc.

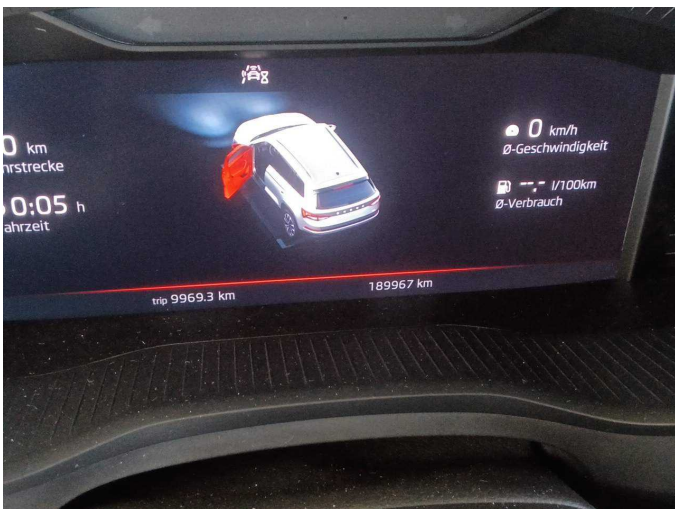


Figure 53: Misc.



Damage 1: Trim / covers: Carpet - front left side - Damaged - Smart repair



Damage 1: Trim / covers: Carpet - front left side - Damaged - Smart repair



Damage 1: Trim / covers: Carpet - front left side - Damaged - Smart repair



Damage 1: Trim / covers: Carpet - front left side - Damaged - Smart repair



Damage 2: Boot lid / rear door: Boot lid - dent(s) - Smooth repair work



Damage 2: Boot lid / rear door: Boot lid - dent(s) - Smooth repair work



Damage 3: Bonnet: Bonnet - dent(s) - Smooth repair work



Damage 3: Bonnet: Bonnet - dent(s) - Smooth repair work



Wear and tear 1: Bonnet: Bonnet - Stone chips - No deduction



Wear and tear 1: Bonnet: Bonnet - Stone chips - No deduction



Wear and tear 1: Bonnet: Bonnet - Stone chips - No deduction



Wear and tear 1: Bonnet: Bonnet - Stone chips - No deduction



Wartungshistorie

(gemäß Auftraggeber Informationen)

Fahrgestellnummer: TMBLN7NS6R8038705

Hersteller / Modell: SKODA SKODA Kodiaq 2.0 TDI 4x4 DSG Sportline

Datum	KM-Stand	Beschreibung
01.04.2026	187.642	Bremsflüssigkeit; Bremsflüssigkeit ern; Kraftstofffilter ern; Luftfiltereinsatz ern; Motoröl b. Wartung; Ölwechsel - Hinterachse; Regelwartungsdienst; Reparatur Sonstiges; Systemtest/Eigendiagnose; Wartung Sonstiges
04.12.2025	151.825	Bremse Sonstiges; Bremsklötze hinten; Bremsklötze vorne; Bremsscheiben + Klötze h; Bremsscheiben + Klötze v; Bremsscheiben hinten; Bremsscheiben vorne; Motoröl b. Wartung; Ölfilter ern; Regelwartungsdienst; Wartung Sonstiges
28.08.2025	125.202	Getriebeöl ern/prüfen; Motoröl b. Wartung; Ölfilter ern; Regelwartungsdienst; Wartung Sonstiges
19.05.2025	97.380	Kraftstofffilter ern; Luftfiltereinsatz ern; Motoröl b. Wartung; Ölfilter ern; Regelwartungsdienst; Systemtest/Eigendiagnose; Wartung Sonstiges
19.03.2025	81.169	Bremse Sonstiges; Bremsklötze hinten; Bremsklötze vorne; Bremsscheiben hinten; Bremsscheiben vorne
18.12.2024	58.625	Motoröl b. Wartung; Ölfilter ern; Regelwartungsdienst; Wartung Sonstiges
08.08.2024	28.981	Motoröl b. Wartung; Ölfilter ern; Regelwartungsdienst; Systemtest/Eigendiagnose; Wartung Sonstiges