

## Expertise

Protocol number: 46050070  
Order No. / Reference: 26413152  
Inspection date: 15 Jun 2026

Manufacturer: Volkswagen

Model: Passat Variant 1.4 TSI Plug-In-Hybrid DSG GTE

VIN: WVVZZZ3CZME058705



### Vehicle details

#### Manufacturer / Type / Model / Equipment

Volkswagen Passat Variant 1.4 TSI Plug-In-Hybrid DSG GTE

**Vehicle Identification number** WVVZZZ3CZME058705

**Mileage (Read)** 139,464 km

**First registration** 14 Dec 2020

**Number of holders** 1

**Next periodical technical inspection** 12/2025

(Report not on hand)

**Power / Engine displacement** 115 kw / 1,395 ccm

**Fuel type / Cylinder** Hybr.B/E ext.aufll / 4

**Gearbox / Number of gears** Automatic / 6

**Type of drive** Front drive

**Type of vehicle** Station wagon

**Colour / colour code** Aquamarinblau Metallic

**Doors / Seats** 5 / 5

**Upholstery type** Cloth

**Colour of upholstery** Black-Blue

**Re-import** no

**Vehicle with smoke odor** no

**readiness to drive** Roadworthy



Vehicle details			
<b>Maintenance booklet / proof</b>	digital proof / complete	<b>Next maintenance in</b>	60 Tag(e)
<b>Last service on / at</b>	08/2025 at 131,525 km		
<b>Key is / should be</b>	2 / 2	<b>FZG documents</b>	ZB#2 (B) was available (copy), ZB#1 (S) was not available.
		<b>Letter No.</b>	FX427896
<b>Previous damage / Accident</b>	None detectable	<b>Repainting</b>	None detectable
<b>Inspection conditions</b>	sufficient	<b>Lifting equipment / pit</b>	No
<b>Test drive</b>	Not performed	<b>Engine function test</b>	Performed
<b>readiness to drive</b>	Roadworthy		
<b>Manufacturer key number/ type code number</b>	0603 / BRZ 00059		
<b>Emission standard</b>	EURO6;WLTP;AM;PI/CI; M, N1 I	<b>fine dust sticker</b>	
<b>Permitted total weight</b>	2,270 kg	<b>Empty weight</b>	

## Tyres

Mounted tyres				
#	Tyre size	Type of tyre	Manufacturer	Tread depth
1)	215/55 R17 94H	Winter tyres on Light alloy	Continental	6mm / 6mm
2)	215/55 R17 94H	Winter tyres on Light alloy	Continental	6mm / 6mm
Additional tyres				
#	Tyre size	Type of tyre	Manufacturer	Tread depth
1)	215/55 R17 94V	Summer tires (with run-flat tires) on Light alloy	Pirelli	6mm / 6mm
2)	215/55 R17 94V	Summer tires (with run-flat tires) on Light alloy	Pirelli	6mm / 6mm

**Legend: Tread depth information for the left tire is listed first, for the right tire it is listed second on the axle in the direction of travel.**



## Equipment

### Standard equipment

- Airbag for driver and front passenger
- Anti-lock braking system (ABS)
- Adaptive Cruise Control (ACC) "stop & go", including speed limiter
- Hill start assist
- Headliner in Mistral Grey
- Tachometer
- Electronic parking brake including auto-hold function
- Electronic stability program and electromechanical brake booster
- Pedestrian detection
- Adjustable luggage compartment floor
- Interior lights front and rear with switch-off delay and dimming function
- Instrument cluster with electronic speedometer, odometer and trip odometer, tachometer
- Front headrests
- LED headlights with daytime running lights
- Headlight range control
- Makeup mirrors in the sun visors
- Fatigue detection
- Mains charging cable for household socket
- Mesh partition
- Emergency braking assistant "Front Assist" (for automatic distance control ACC up to 210 km/h)
- Upholstery: Fabric "Weave"
- Radio accessories: Digital radio reception DAB+
- Tire pressure monitoring system (passive)
- LED taillights
- Gearshift knob in leather
- Keyless start system without safe locking
- Seat belts: Three-point automatic seat belt
- Start-stop system
- Bumpers in body color
- Textile floor mats
- Warning tone and light for unfastened seat belts front and rear
- Airbag, head airbag system for front and rear passengers
- App-Connect Wireless
- Electrically adjustable and heated exterior mirrors
- Cup holders (2) front
- third brake light
- black roof rails
- Parking aid - warning signals for obstacles in the front and rear area
- Remote release for luggage compartment lid
- Windscreen made of laminated safety glass, heat and sound insulating
- Transmission: 6-speed DSG
- ISOFIX mounting points
- Air conditioning system "Air Care Climatronic" with 3-zone temperature control and allergen filter
- Rear headrests (3)
- LED taillights
- Steering wheel: Multifunction sports steering wheel in leather, with paddle shifters
- "Premium" multifunction display with multicolor screen
- Navigation system "Discover Media" incl. "Streaming & Internet"
- Non-smoking version
- Emergency call service
- Package: Light and Sight Package "Plus"
- Proactive occupant protection system in conjunction with "Front Assist"
- Wheels: 4 "Montpellier" alloy wheels 7 J x 17
- Rear bench seat, undivided, backrest asymmetrically split and foldable, with center armrest
- Power steering
- Seats: Front seats are height-adjustable
- 12V power outlet on the rear of the center console
- Telephone interface
- First aid kit, warning triangle and high-visibility vest
- Electronic immobilizer
- Black trim strips on the side windows



### Extra equipment

- Airbag: Driver's side knee airbag, rear side airbags and seatbelt pretensioners (airbag for driver and front passenger, with front passenger airbag deactivation, including driver's side knee airbag - three-point automatic seatbelts with pretensioners for the outer rear seats - side airbags for the outer rear seats, including front side airbags and head airbag system)
- Laminated safety glass, noise-insulating for front and side windows in conjunction with R-Line Sport package for adaptive chassis control (DCC) (including tinted rear side windows and rear window)
- Package: "Business Premium" package incl. navigation (from Business trim level) (2 USB-C ports in the front, 1 USB-C charging port in the rear, 230V socket, App-Connect incl. wireless, Apple CarPlay, Android Auto, "Travel Assist" driver assistance system and "Lane Assist" lane keeping system, Air Care Climatronic with 3-zone temperature control, allergen filter and rear controls, lumbar support in the front, electric on the driver's side, massage function on the driver's side, "Rear View" reversing camera, heated windshield washer nozzles, Comfort telephone interface, inductive charging function, heated front seats)
- Seats: Front passenger seat backrest folds down completely
- Steering wheel: Multifunction sports steering wheel in leather, heated, with paddle shifters
- Tailgate with electric opening and closing, electric opening for luggage compartment cover (extendable and removable luggage compartment cover with electric opening - tailgate with electric opening and closing)
- Wheels: Tire Mobility Set omitted
- "Comfort" telephone interface with inductive charging function (hands-free system)
- Digital Cockpit, multi-colored (various info profiles selectable)
- e-Sound (artificially generated engine noise to inform other road users about the approach of the e-vehicle)
- Exterior mirrors with ambient lighting and passenger-side mirror lowering function (foldable and heated - dimming on the driver's side)
- IQ.LIGHT - LED matrix headlights, including dark red LED taillights (Dynamic Light Assist high beam control for LED matrix headlights - LED fog lights and cornering lights - LED taillights with dynamic turn signals - LED headlights with LED daytime running lights, cornering lights and dynamic turn signals - Dynamic headlight range control with dynamic cornering lights - Individual installation - Rear fog lights on both sides, reversing lights on both sides)
- Luggage net
- Package: Ambient lighting "Plus" (multicoloured ambient lighting - LED entry/warning lights in all doors - interior lights with switch-off delay and dimming function, 2 LED reading lights each in the front and rear)
- Radio accessories: "DYNAUDIO Confidence" sound system (10 low-resonance speakers, specially tuned to the performance - 1 center speaker - digital 10-channel amplifier - vehicle-specific sound tuning - total output 700 watts)
- Removable luggage compartment protective mat (back of the rear seat backrest with black rubber coating)

### Brief expert findings

Documents submitted	At the time of the inspection, the vehicle registration certificate Part 2 (title) was available, but the vehicle registration certificate Part 1 (document) was not. (Copy)
VIN comparison	The vehicle identification number (VIN) was read from the vehicle and its conformity with the submitted documents was confirmed by the undersigned during the inspection.
Inspection	The inspection conditions were sufficient for the assessment of the vehicle. No lifting equipment or pit was available for inspecting the vehicle. Therefore, inspection of the vehicle's underside was only possible to a limited extent.
Test drive	No test drive/shunting maneuver was carried out during the inspection of the vehicle.
Engine function test	An engine test run was performed.
readiness to drive	The vehicle was roadworthy at the time of inspection.

### Value reducing factors

No.	Component group	Description
1	Trim / covers	Floor mats - Damaged - Replace
2	Misc.	Main inspection - Due - Perform
3	2nd wheel set	1 tyre (Drucklos, verformt) - Defective - Replace
4	Front bumper	Front bumper - Scratched - Repair and paint
5	Rear bumper	Rear bumper (Ladekante) - Scratched - Paint



## Wear and tear

No.	Component group	Description
1	Bonnet	Bonnet - Stone chips - No deduction
2	Vehicle glazing	Windscreen - Stone chips - No deduction
3	Interior	Interior - Soiled - No deduction

The vehicle shows signs of wear and tear commensurate with its age and use.

## Order/Scope of Order

An order was placed to prepare a sales report for the described vehicle. This report includes the following:

- Description of key vehicle information
- Documentation of equipment features  
(*Delivery by third-party service providers*)
- Documentation of damage, defects, missing parts
- Documentation of prior damage, unrepaired prior damage, repainting
- A brief visual or functional inspection of the equipment details, if possible.  
(*Functional testing of driver assistance systems is not included in the scope of services!*)
- a photographic documentation of the vehicle

## Basis for the order

This product is based on the guidelines for vehicle returns and valuations published by Alphabet Fleet GmbH. The expert makes the specific findings in each individual case objectively, within the framework of the prescribed standards, based on their own expertise.

The vehicle inspection takes place in a fully assembled, unassembled state.

Damage or defects that can only be detected during disassembly/diagnostic work or through further investigation remain within the realm of prognostic risk. An increased risk exists due to concealed defects caused by fraudulent misrepresentation and which were not identifiable by the expert.

Damage or defects resulting from normal use or wear and tear of the vehicle will be accepted in accordance with the applicable standard.

There was no explicit identification or monetary consideration of the expected features within the product.

Features which, in their nature and extent, slightly exceed normal use but do not constitute unacceptable damage, will be documented and indicated as signs of wear, if applicable.

Damage or defects that, according to the applicable standard, can no longer be attributed to normal use or wear and tear are listed under "Value Reducing Factors" in the product description.

Depending on the product specification, a monetary ID can be provided. If this takes place, the costs can be 100% d or pro rata depending on the vehicle's age and mileage.

## Previous damages

No apparent prior damage that had been repaired could be found on the vehicle.

## Comments

- Die Unterbodenbesichtigung war nur ebenerdig & eingeschränkt möglich. Mehrkosten möglich.
- Für den montierten Radsatz wurde kein Nachweis erbracht.
- Winterradsatz ist kein Bestandteil des Auslieferungsumfanges.



Figure 1: Diagonal front (left)



Figure 2: Diagonal front (right)



Figure 3: Diagonal rear (left)



Figure 4: Diagonal rear (right)

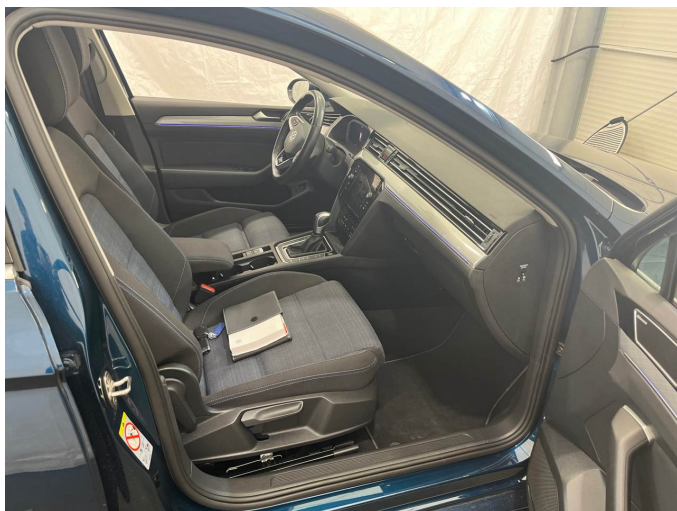


Figure 5: Interior - front



Figure 6: Interior - rear



Figure 7: Instrument cluster



Figure 8: Instrument panel



Figure 9: Interior 360° view



Figure 10: Cargo area

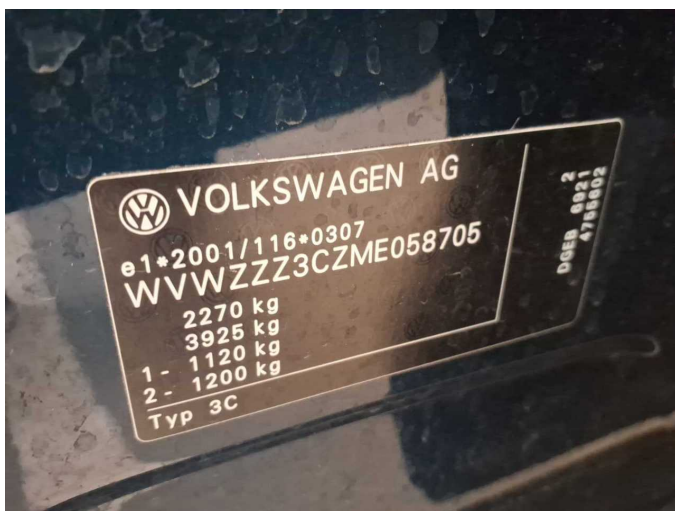


Figure 11: VIN

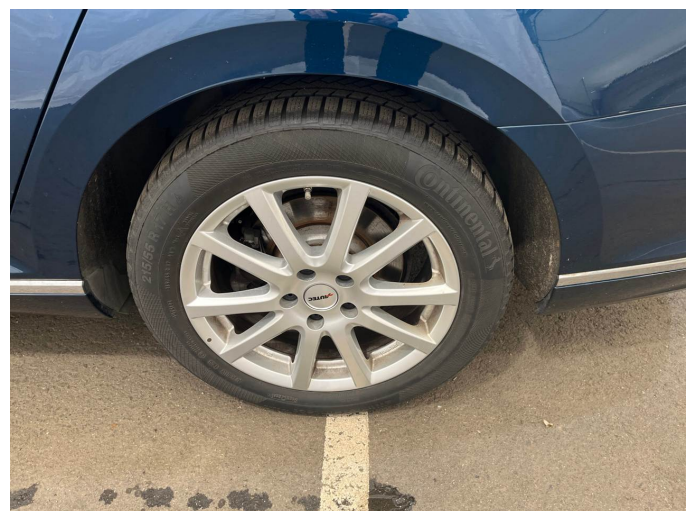


Figure 12: Mounted tyres



Figure 13: Documents



Figure 14: Documents



Figure 15: Additional tyres



Figure 16: Navigation



Figure 17: Misc.



Figure 18: Misc.



Figure 19: Misc.



Figure 20: Misc.



Figure 21: Misc.



Figure 22: Misc.

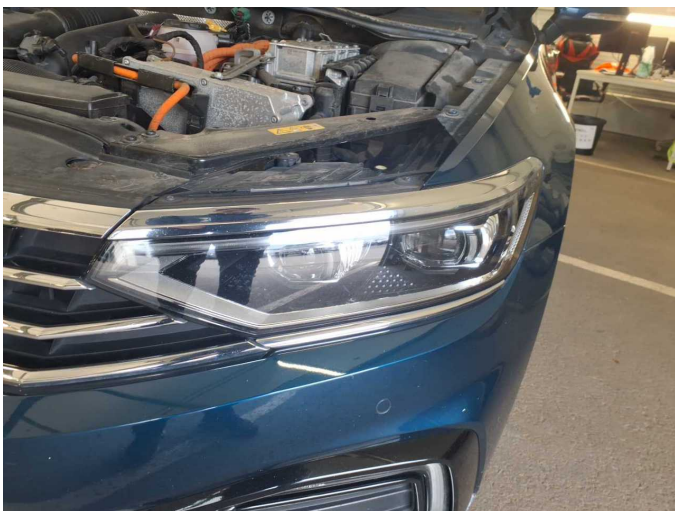


Figure 23: Misc.



Figure 24: Misc.



Figure 25: Misc.



Figure 26: Misc.



Figure 27: Misc.

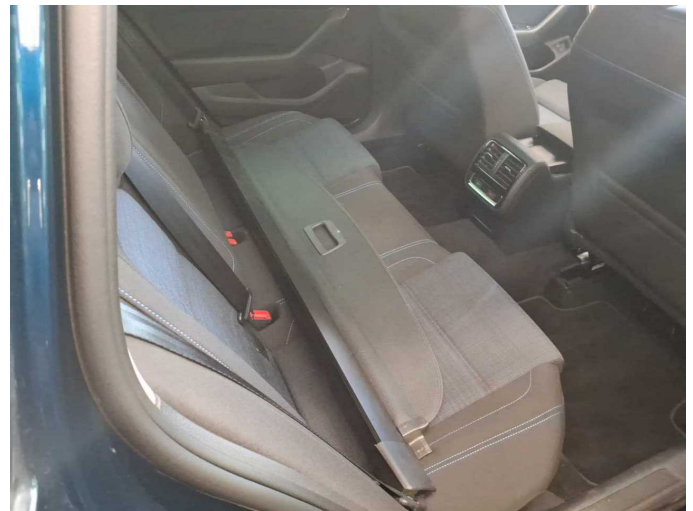


Figure 28: Misc.

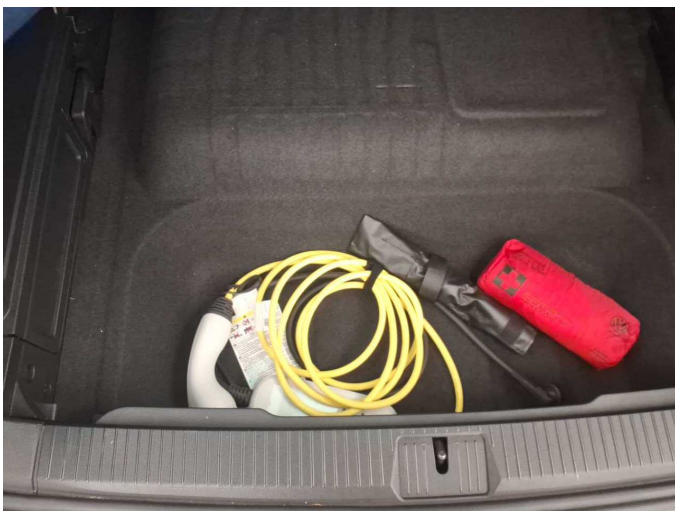


Figure 29: Misc.



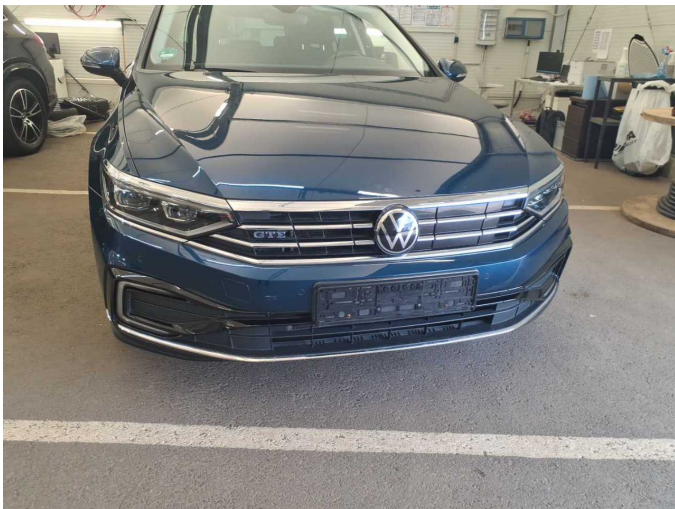
Damage 1: Trim / covers: Floor mats - Damaged - Replace



**Damage 3:** 2nd wheel set: 1 tyre (Drucklos, verformt) - Defective - Replace



**Damage 3:** 2nd wheel set: 1 tyre (Drucklos, verformt) - Defective - Replace



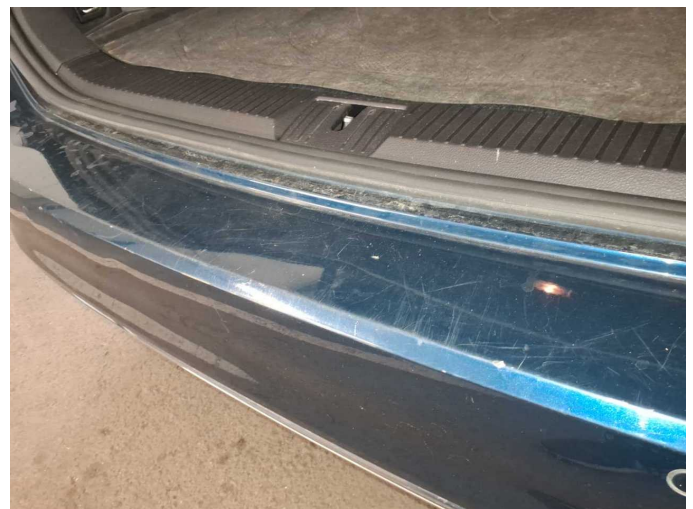
**Damage 4:** Front bumper: Front bumper - Scratched - Repair and paint



**Damage 4:** Front bumper: Front bumper - Scratched - Repair and paint



**Damage 5:** Rear bumper: Rear bumper (Ladekante) - Scratched - Paint



**Damage 5:** Rear bumper: Rear bumper (Ladekante) - Scratched - Paint



# Wartungshistorie

(gemäß Auftraggeber Informationen)

Fahrgestellnummer: WVWZZZ3CZME058705  
Hersteller / Modell: VOLKSWAGEN VOLKSWAGEN Passat Variant 1.4 TSI Plug-In-Hybrid DSG GTE

Datum	KM-Stand	Beschreibung
14.08.2025	131.525	Motoröl b. Wartung; Ölfilter ern; Ölwechsel; Wartung Sonstiges
14.02.2025	117.973	Bremsflüssigkeit; Bremsflüssigkeit ern; Getriebeöl ern/prüfen; Motoröl b. Wartung; Ölfilter ern; Regelwartungsdienst; Wartung Sonstiges; Zündkerzen ern
12.09.2024	103.050	Bremse Sonstiges; Bremsklötze hinten; Bremsscheiben hinten; Motoröl b. Wartung; Ölfilter ern; Ölwechsel; Wartung Sonstiges
01.02.2024	88.977	Bremse Sonstiges; Bremsklötze vorne; Bremsscheiben vorne; Luftfiltereinsatz ern; Motoröl b. Wartung; Ölfilter ern; Regelwartungsdienst; Wartung Sonstiges
07.12.2023	85.288	AU; Bremse Sonstiges; Bremsklötze hinten; Bremsscheiben hinten; Systemtest/Eigendiagnose; Wartung Sonstiges
13.07.2023	73.617	Motoröl b. Wartung; Ölfilter ern; Ölwechsel; Wartung Sonstiges
06.03.2023	58.530	Bremsflüssigkeit; Bremsflüssigkeit ern; Getriebeöl ern/prüfen; Motoröl b. Wartung; Ölfilter ern; Regelwartungsdienst; Systemtest/Eigendiagnose; Wartung Sonstiges; Zündkerzen ern
28.07.2022	45.525	Motoröl b. Wartung; Ölwechsel
11.03.2022	28.991	Motoröl b. Wartung; Regelwartungsdienst
01.09.2021	17.842	Motoröl b. Wartung; Ölfilter ern; Ölwechsel; Wartung Sonstiges