

Expertise

Protocol number: 46154749
Order No. / Reference: 26509749
Inspection date: 24 Jun 2026

Manufacturer: Mazda

Model: MX-30 e-SKYACTIV R-EV MAKOTO

VIN: JMZDR6WJJ00217548



Vehicle details

Manufacturer / Type / Model / Equipment

Mazda MX-30 e-SKYACTIV R-EV MAKOTO

Vehicle Identification number	JMZDR6WJJ00217548
Mileage (Read)	42,287 km
First registration	22 Feb 2024
Number of holders	1
Next periodical technical inspection	02/2027 (Report not on hand)

Power / Engine displacement	60 kw / 1,660 ccm
Fuel type / Cylinder	Hybr.B/E ext.aufll / 2
Gearbox / Number of gears	Direct drive / 1
Type of drive	Front drive
Type of vehicle	SUV

Colour / colour code	Arctic White
Doors / Seats	5 / 5
Upholstery type	Cloth / leather combination
Colour of upholstery	Black

Re-import	no
Vehicle with smoke odor	no
readiness to drive	Roadworthy



Vehicle details

Maintenance booklet / proof	Non-existent	Next maintenance in	11,000 km
Key is / should be	2 / 2	FZG documents	ZB#2 (B) was available (copy), ZB#1 (S) was not available.
		Letter No.	HC240400
Previous damage / Accident	None detectable	Repainting	None detectable
Inspection conditions	sufficient	Lifting equipment / pit	yes
Test drive	Not performed	Engine function test	Performed
readiness to drive	Roadworthy		
Manufacturer key number/ type code number	7118 / AIK 00001		
Emission standard	EURO6;WLTP;AP;PI/CI; M, N1 I	fine dust sticker	
Permitted total weight	2,251 kg	Empty weight	

Tyres

Mounted tyres

#	Tyre size	Type of tyre	Manufacturer	Tread depth
1)	215/55 R18 99V	Winter tyres on Light alloy	Bridgestone	7mm / 7mm
2)	215/55 R18 99V	Winter tyres on Light alloy	Bridgestone	7mm / 7mm

Additional tyres

#	Tyre size	Type of tyre	Manufacturer	Tread depth
1)	215/55 R18 95H	Summer tyres on Light alloy	Bridgestone	5mm / 5mm
2)	215/55 R18 95H	Summer tyres on Light alloy	Bridgestone	6mm / 6mm

Replacement

Typ	Tyre size	Type of tyre	Manufacturer	Tread depth
	Tirefit	Expiration date 07/2029		

Legend: Tread depth information for the left tire is listed first, for the right tire it is listed second on the axle in the direction of travel.

TÜV SÜD Auto Partner GmbH
Wiesenring 2
04159 Leipzig

Inspection location
Hartmann Fleet Professionals GmbH
Industriestraße 11
36272 Niederaula



Equipment



Standard equipment

- Driver and passenger side airbags
- Airbag: Head/shoulder airbags, front and rear
- Alarm system
- Rear Cross Traffic Alert (RCTA)
- Automatically dimming exterior mirrors
- Electrically adjustable exterior mirrors
- AVAS (Acoustic Vehicle Alerting System)
- Hill Start Assist (HLA)
- third brake light
- Colored glazing, heat-insulating
- Coming/leaving home light function
- Black headliner
- E-Call emergency call system
- Front and rear parking sensors
- Driving modes: Normal, EV and Charging mode
- Window trim with high-gloss finish
- G-Vectoring Control Plus (e-GVC Plus), Electronic Vehicle Dynamics Control
- Transmission: 1-speed direct drive
- Seat belts: 3-point automatic seat belts for all seats
- Rear and side windows tinted
- rear window wiper
- Frameless interior rearview mirror
- Isofix child seat anchors
- Comfort turn signal function
- Paint finish: Solid
- Charging cable: Type 2 charging cable (20 A) for charging stations (Mode 3)
- LED taillights and indicators
- Leather gear knob
- Steering wheel: Steering wheel control buttons
- Steering column adjustable in height and length
- Login: Keyless access system
- Matrix LED lighting system
- front center armrest
- Driver Alertness Detection (DAA)
- Emergency Stop Signal (ESS)
- Otto particulate filter
- Upholstery: Vegan faux leather/fabric
- Radio accessories: Enhanced smartphone integration
- Radio accessories: Hands-free system with voice control and Bluetooth with audio streaming
- Tire pressure monitoring system (TPMS), direct
- Spare wheel: Mobility kit
- Wheels: 18" alloy wheels in diamond-cut design
- window antenna
- Electric power steering
- Seats: Electric seat adjustment for the driver with memory function
- Front seat heating
- Sound simulator in the interior (via the audio system)
- Airbag: Knee airbag for driver
- Airbag: Front side airbags
- Anti-lock braking system (ABS) with electronic brake assist (EBA)
- Heated and electrically folding exterior mirrors
- Exterior mirror dipping function when reversing
- Heated battery
- Electronic brake force distribution (EBD)
- Chrome accents on the steering wheel, start button, glove compartment
- D-pillar trim with Mazda lettering
- Dynamic Stability Control (DSC) with Traction Control System (TCS)
- De-icer function for windshield wipers
- Electric windows, front and rear
- High Beam Assist HBC
- luggage compartment cover
- Adaptive cruise control with traffic jam assist function (MRCC)
- Head-up display
- Heated rear window
- i-ACTIV display in the central round instrument
- Interior mirror automatically dimming
- automatic climate control
- Headrests (5)
- Charging cable: Type 2 charging cable (13 A) for household socket (Mode 2)
- LED interior and trunk lighting
- LED daytime running lights
- Steering wheel: 3-spoke sports leather steering wheel
- Steering wheel: Steering wheel heating
- light sensor
- Illuminated makeup mirror for driver and front passenger
- Armrest - centre, rear
- MyMazda App
- Navigation: Mazda SD navigation system
- Emergency Brake Assist (SBS)
- Electronic parking brake with auto hold function
- Radio: Mazda audio system with USB port
- Radio accessories: 22.4 cm (8.8 inch) high-resolution color display
- Rain sensors
- Recuperation levels 5, adjustable via steering wheel paddles
- Reversing camera with fixed guidelines
- Headlights washer / wiper system
- Seats: Passenger seat height adjustable
- Seats: Driver's seat height adjustable
- Seats: Rear seat backrests split 60:40, foldable
- Sunglasses holder in the headliner
- Lane Keeping Assist with Steering Support (LAS)
- 230 Volt power outlet at the front (up to 150 W)
- Traffic Sign Recognition (TSR)
- heat pump



- Lane Change Assist Plus (BSM) with steering support
- 230 volt socket in the trunk (up to 1500 W)
- electronic immobilizer
- Central locking with remote control

Extra equipment

- Roof: Glass sunroof
- Package: Premium (360° Monitor - Driver Attention Warning (DM) - Rear Cross Traffic Alert with Emergency Braking (SBS-RC) - BOSE Sound System with 12 Speakers - Advanced Traffic Jam Assist (CTS) - Front Cross Traffic Alert (FCTA) - Rear Cross Traffic Alert (SBS-R))

Brief expert findings

Documents submitted	At the time of the inspection, the vehicle registration certificate Part 2 (title) was available, but the vehicle registration certificate Part 1 (document) was not. (Copy)
VIN comparison	The vehicle identification number (VIN) was read from the vehicle and its conformity with the submitted documents was confirmed by the undersigned during the inspection.
Inspection	The inspection conditions were sufficient for the assessment of the vehicle. Lifting equipment and/or a pit were available for examining the vehicle.
Test drive	No test drive/shunting maneuver was carried out during the inspection of the vehicle.
Engine function test	An engine test run was performed.
readiness to drive	The vehicle was roadworthy at the time of inspection.

Value reducing factors

No.	Component group	Description
1	Misc.	Inspection / maintenance (Historie) - No evidence - No deduction
2	Door - front left side	Door - dent(s) - Smooth repair work
3	Door - front right side	Door - Scratch(es) - Smart repair
4	Trim / covers	Boot lid - interior trim - Scratch(es) - Replace
5	Vehicle glazing	Windscreen - Stone chips - Replace

Order/Scope of Order

An order was placed to prepare a sales report for the described vehicle. This report includes the following:

- Description of key vehicle information
- Documentation of equipment features
(*Delivery by third-party service providers*)
- Documentation of damage, defects, missing parts
- Documentation of prior damage, unrepaired prior damage, repainting
- A brief visual or functional inspection of the equipment details, if possible.
(*Functional testing of driver assistance systems is not included in the scope of services!*)
- a photographic documentation of the vehicle



Basis for the order

This product is based on the guidelines for vehicle returns and valuations published by Alphabet Fleet GmbH. The expert makes the specific findings in each individual case objectively, within the framework of the prescribed standards, based on their own expertise.

The vehicle inspection takes place in a fully assembled, unassembled state.

Damage or defects that can only be detected during disassembly/diagnostic work or through further investigation remain within the realm of prognostic risk. An increased risk exists due to concealed defects caused by fraudulent misrepresentation and which were not identifiable by the expert.

Damage or defects resulting from normal use or wear and tear of the vehicle will be accepted in accordance with the applicable standard.

There was no explicit identification or monetary consideration of the expected features within the product.

Features which, in their nature and extent, slightly exceed normal use but do not constitute unacceptable damage, will be documented and indicated as signs of wear, if applicable.

Damage or defects that, according to the applicable standard, can no longer be attributed to normal use or wear and tear are listed under "Value Reducing Factors" in the product description.

Depending on the product specification, a monetary ID can be provided. If this takes place, the costs can be 100% d or pro rata depending on the vehicle's age and mileage.

Previous damages

No apparent prior damage that had been repaired could be found on the vehicle.

Comments

- Für den montierten Radsatz wurde kein Nachweis erbracht.

- Winterradsatz ist kein Bestandteil des Auslieferungsumfangs.

- Die beigefügte Reparaturkostenkalkulation wurde nach bestem Wissen und Gewissen unter eingeschränkten Besichtigungsbedingung im demontagefreien Zustand erstellt. Es können aufgrund verdeckter Beschädigung erhebliche Mehrkosten und somit Abweichung der für den Unfall ausgewiesenen Reparaturkosten nicht ausgeschlossen werden.



Figure 1: Diagonal front (left)



Figure 2: Diagonal front (right)



Figure 3: Diagonal rear (left)



Figure 4: Diagonal rear (right)



Figure 5: Interior - front

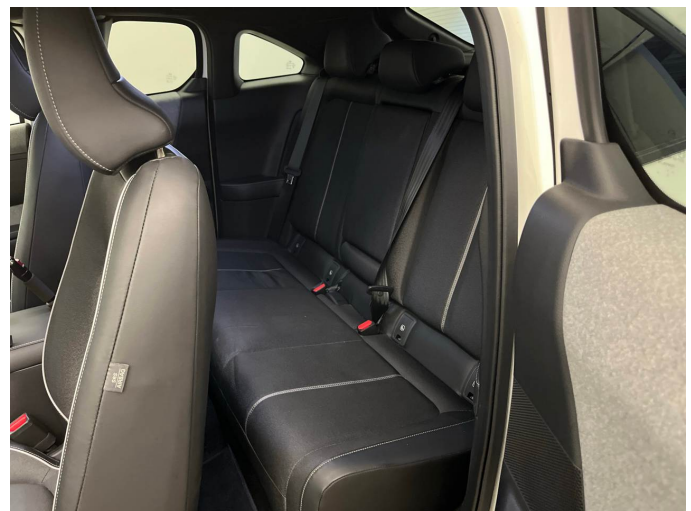


Figure 6: Interior - rear



Figure 7: Instrument cluster



Figure 8: Instrument panel



Figure 9: Interior 360° view



Figure 10: Cargo area



Figure 11: VIN



Figure 12: Mounted tyres



Figure 13: Documents



Figure 14: Additional tyres

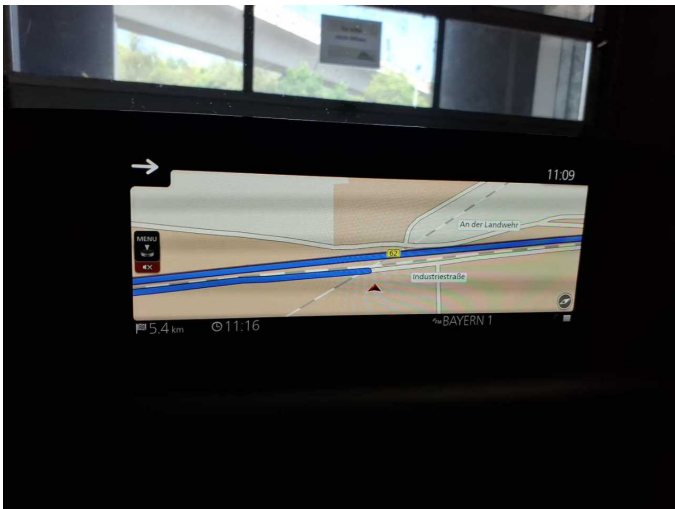


Figure 15: Navigation



Figure 16: Misc.

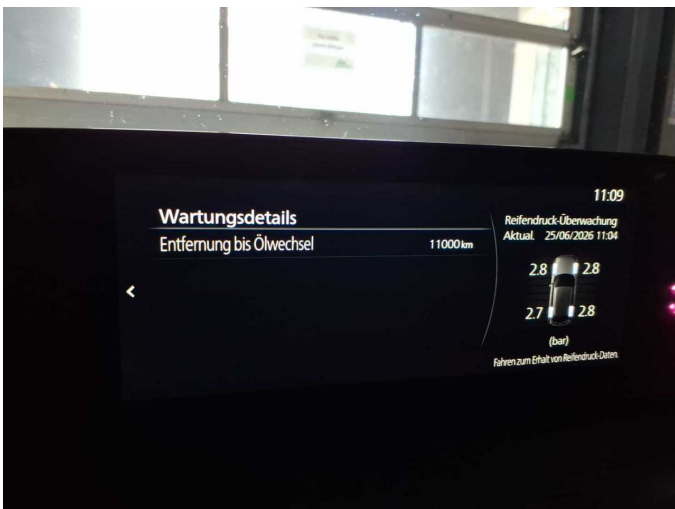


Figure 17: Misc.



Figure 18: Misc.



Figure 19: Misc.



Figure 20: Misc.



Figure 21: Misc.



Figure 22: Misc.



Figure 23: Misc.



Figure 24: Misc.



Figure 25: Misc.



Figure 26: Misc.



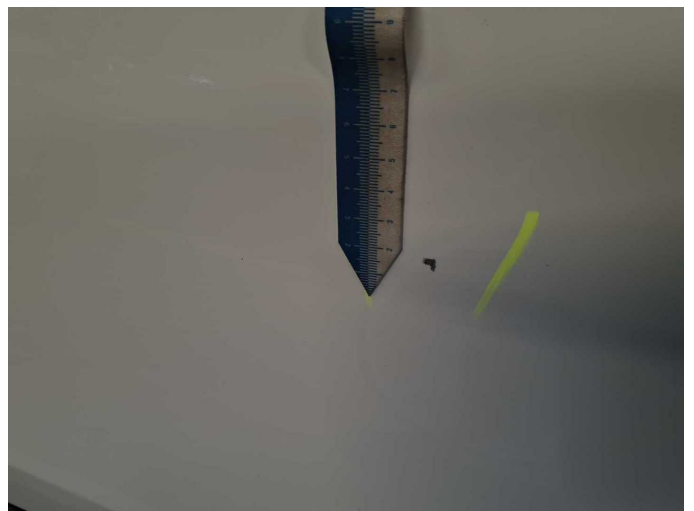
Figure 27: Misc.



Damage 2: Door - front left side: Door - dent(s) - Smooth repair work



Damage 2: Door - front left side: Door - dent(s) - Smooth repair work



Damage 3: Door - front right side: Door - Scratch(es) - Smart repair



Damage 3: Door - front right side: Door - Scratch(es) - Smart repair



Damage 4: Trim / covers: Boot lid - interior trim - Scratch(es) - Replace



Damage 4: Trim / covers: Boot lid - interior trim - Scratch(es) - Replace



Damage 4: Trim / covers: Boot lid - interior trim - Scratch(es) - Replace



Damage 5: Vehicle glazing: Windscreen - Stone chips - Replace



Damage 5: Vehicle glazing: Windscreen - Stone chips - Replace



Damage 5: Vehicle glazing: Windscreen - Stone chips - Replace



Damage 5: Vehicle glazing: Windscreen - Stone chips - Replace