

Expertise

Protocol number: 46327813
Order No. / Reference: 26625799
Inspection date: 2 Jul 2026

Manufacturer: Skoda

Model: Kodiaq 2.0 TDI 4x4 DSG Style

VIN: TMBLN9NS9P8046483



Vehicle details

Manufacturer / Type / Model / Equipment

Skoda Kodiaq 2.0 TDI 4x4 DSG Style

Vehicle Identification number TMBLN9NS9P8046483

Mileage (Read) 145,463 km

First registration 25 Apr 2023

Number of holders 1

Power / Engine displacement 147 kw / 1,968 ccm

Fuel type / Cylinder Diesel / 4

Gearbox / Number of gears Automatic / 7

Type of drive All-wheel drive

Type of vehicle SUV

Colour / colour code Graphit-Grau Metallic

Doors / Seats 5 / 5

Upholstery type Leather

Colour of upholstery Black



Vehicle details			
Maintenance booklet / proof	digital proof / complete	Next maintenance in	7,800 km
Last service on / at	05/2026 at 137,813 km		
Key is / should be	2 / 2	FZG documents	ZB#2 (B) was available (copy), ZB#1 (S) was not available.
		Letter No.	GQ567520
Previous damage / Accident	Detectable	Repainting	Detectable
Inspection conditions	sufficient	Lifting equipment / pit	yes
Test drive	Not performed	Engine function test	Performed
Manufacturer key number/ type code number	8004 / AVW 00613		
Emission standard	EURO6;WLTP;AP;PI/CI; M, N1 I	fine dust sticker	
Permitted total weight	2,410 kg	Empty weight	

Tyres

Mounted tyres				
#	Tyre size	Type of tyre	Manufacturer	Tread depth
1)	235/55 R18 100V	Summer tyres on Light alloy	Continental	4mm / 4mm
2)	235/55 R18 100V	Summer tyres on Light alloy	Continental	6mm / 6mm
Additional tyres				
#	Tyre size	Type of tyre	Manufacturer	Tread depth
1)	235/55 R18 104H	Winter tires (with run-flat tires) on Light alloy	Pirelli	7mm / 7mm
2)	235/55 R18 104H	Winter tires (with run-flat tires) on Light alloy	Pirelli	7mm / 7mm
Replacement				
Typ	Tyre size	Type of tyre	Manufacturer	Tread depth
	Tirefit	Expiration date 02/2027		

Legend: Tread depth information for the left tire is listed first, for the right tire it is listed second on the axle in the direction of travel.

TÜV SÜD Auto Partner GmbH
Wiesenring 2
04159 Leipzig

Inspection location
Hartmann Fleet Professionals GmbH
Leerenstraße 25
29683 Bad Fallingbommel



Equipment



Standard equipment

- 12V socket in the center console and in the trunk
- Storage compartments behind the wheel arches in the trunk
- Airbag, driver's knee airbag
- Airbag, head airbags
- Allergen filter
- Anti-lock braking system (ABS)
- Dashboard in black / black, door trim in black
- Electrically adjustable and heated exterior mirrors with integrated side indicators
- Hydraulic brake assist (HBA)
- Grey headliner
- Roof rails, anodized (including chrome trim strips on the side windows)
- Digital Cockpit (8")
- Third brake light (in the rear spoiler (LED))
- eCall (automatic emergency call function in case of an accident with airbag deployment)
- ESC Electronic Stability Control
- Electric windows front and rear (including anti-pinch protection and child safety lock)
- Front radar assistant including city emergency braking function with pedestrian detection
- Cruise control
- Tinted windows
- Isofix anchorage on the outer rear seats including top tether
- Boot cover, roll-up and removable
- Front and rear headrests are height-adjustable.
- Paint finish: Solid
- LED taillights in crystal glass look with animated turn signals
- Reading lights at the front of the headliner
- Rear center armrest with cup holders
- Front center armrest, including storage compartment
- Multi-collision brake
- Upholstery: Fabric-leather
- Radio: Bolero infotainment system (Bolero music system - 8" capacitive color display - voice control)
- Radio accessories: Digital radio reception DAB+
- Tire mobility kit (tire repair spray incl. compressor)
- Wheels: 18" Elbrus alloy wheels (7Jx18 tires 235/55 R18 100V ET43)
- Heated windshield washer nozzles, front
- Electromechanical power steering
- Seats: Heated front seats
- Seats: Adjustable lumbar support in the front seats
- Seats: Electrically adjustable front seats with memory function
- Seats: Remote release of the rear seat backrests (2nd row) in the boot
- Sun visor on driver and passenger side with illuminated vanity mirror
- Speed limiter
- Storage compartment on the left wheel arch
- front aero windshield wipers
- Airbag for driver and front passenger (passenger airbag can be deactivated)
- Airbag, front side airbags
- Permanent all-wheel drive
- Traction control (ASR)
- Electrically folding exterior mirrors including interior and driver's side mirrors with automatic dimming
- Hill start assist
- Care Connect: Proactive services (10-year term) (Remote Access (1-year term))
- Decorative inlay Linear Diamonds
- Diesel particulate filter
- Tachometer
- Easy Start (start-stop button)
- Electronic parking brake including auto-hold function
- Electronic transverse differential lock (XDS+)
- Driving light assistant and rain sensor ((tunnel light, coming and leaving home function))
- High Beam Assist (Light Assist)
- Front footwell lighting
- Closed storage compartment on the driver's side
- Transmission: 7-speed dual-clutch transmission (DSG)
- Illuminated glove compartment
- Kessy - keyless entry and start-stop system
- Climatronic air conditioning (2-zone) (fully automatic, separately adjustable for driver and front passenger including humidity sensor and odor and allergen filter)
- LED matrix headlights and dynamic high beam assist (Light Assist)
- Steering wheel: Leather steering wheel with multifunction buttons including paddle shifters (height and reach adjustable)
- Engine drag torque control (MSR)
- Front and rear parking sensors
- Wheel arch cover (front and rear, made of plastic, black textured)
- Radio accessories: 8 speakers
- Radio accessories: Wireless SmartLink
- Tire pressure monitoring
- Rear seat backrest split 60:40, foldable, longitudinally adjustable, backrest angle adjustable
- Headlights washer / wiper system
- Kodiaq safety belts (Height-adjustable three-point seat belts in the front, with belt tensioners - Three three-point seat belts in the rear - Belt fastening indicator in the front and in the second row of seats)
- Seats: Height-adjustable front seats



- Telephone: Comfort hands-free telephone system including phone box (with inductive charging function (connection via external antenna))
- Front door sill trims
- Variable fastening concept in the trunk
- Immobiliser

- Skoda Care Connect (SOS emergency call function (eCall, including automatic activation in the event of an accident with airbag deployment) - Mobility service (connection for rapid assistance in case of breakdown) - Information service (connection to the hotline for all questions regarding vehicle functions) - Free remote vehicle access for one year with access to vehicle data/functions via smartphone, e.g., parking position, activating hazard warning lights, current fuel level, etc.)
- Lashing eyes in the trunk
- Central locking with remote control (two vehicle keys)

Extra equipment

- () roof rack
- Electric tailgate operation
- Paint finish: Metallic / Pearl effect
- Upholstery: Glamour leather interior (seat surfaces made of fine nappa leather, combined with high-quality materials)
- Proactive occupant protection including rear side airbags
- Rear view camera

- Swiveling trailer hitch (with electric release, including trailer stabilization)
- Package: Business Amundsen (Style) (Amundsen dynamic radio navigation system - Digital Cockpit Plus (10") - Driver fatigue detection - 230V socket and a USB charging port (Type-C) on the back of the front center armrest - Sunset - Luggage net partition - Infotainment Online (3-year term))

Brief expert findings

Documents submitted	At the time of the inspection, the vehicle registration certificate Part 2 (title) was available, but the vehicle registration certificate Part 1 (document) was not. (Copy)
VIN comparison	The vehicle identification number (VIN) was read from the vehicle and its conformity with the submitted documents was confirmed by the undersigned during the inspection.
Inspection	The inspection conditions were sufficient for the assessment of the vehicle. Lifting equipment and/or a pit were available for examining the vehicle.
Test drive	No test drive/shunting maneuver was carried out during the inspection of the vehicle.
Engine function test	An engine test run was performed.

Value reducing factors

No.	Component group	Description
1	Rear bumper	Rear bumper - Scratch(es) - Smart repair
2	Side panel - rear left side	Side panel - Scratch(es) - Smart repair
3	Drive train	Drive train (Harddiscs) - Porous / cracked - Replace
4	Door - rear left side	Door - Dent / paintcoat damage - Repair and paint
5	Door - front right side	Door - Dent / paintcoat damage - Repair and paint
6	Bonnet	Bonnet - dent(s) - Repair and paint
7	Boot lid / rear door	Boot lid - Deformed - Repair and paint
8	Vehicle glazing	Windscreen - Stone chips - Replace

Wear and tear

No.	Component group	Description
1	Side panel - rear left side	Wheel well extension - Scratch(es) - No deduction
2	Front bumper	Spoiler - Scratch(es) - No deduction

The vehicle shows signs of wear and tear commensurate with its age and use.



Missing parts

Description

Equipment - Roof rack system (Relingträger)

Previous damages

No. Previous damage

1 Side right, Provided by user / customer, from 20 Jan 2026

Extent of
damage (Net)

4.222,99 €

Repainting

No. Repainting

1 Boot lid / rear door, Side panel - rear right side, Door - front right side, Professionally carried out

Paint coat thickness measurement

Boot lid / rear door	178 µm	Side panel - rear right side	192 µm
Door - front right side	172 µm		

Order/Scope of Order

An order was placed to prepare a sales report for the described vehicle. This report includes the following:

- Description of key vehicle information
- Documentation of equipment features
(*Delivery by third-party service providers*)
- Documentation of damage, defects, missing parts
- Documentation of prior damage, unrepaired prior damage, repainting
- A brief visual or functional inspection of the equipment details, if possible.
(*Functional testing of driver assistance systems is not included in the scope of services!*)
- a photographic documentation of the vehicle

Basis for the order

This product is based on the guidelines for vehicle returns and valuations published by Alphabet Fleet GmbH. The expert makes the specific findings in each individual case objectively, within the framework of the prescribed standards, based on their own expertise.

The vehicle inspection takes place in a fully assembled, unassembled state.

Damage or defects that can only be detected during disassembly/diagnostic work or through further investigation remain within the realm of prognostic risk. An increased risk exists due to concealed defects caused by fraudulent misrepresentation and which were not identifiable by the expert.

Damage or defects resulting from normal use or wear and tear of the vehicle will be accepted in accordance with the applicable standard.

There was no explicit identification or monetary consideration of the expected features within the product.

Features which, in their nature and extent, slightly exceed normal use but do not constitute unacceptable damage, will be documented and indicated as signs of wear, if applicable.

Damage or defects that, according to the applicable standard, can no longer be attributed to normal use or wear and tear are listed under "Value Reducing Factors" in the product description.

Depending on the product specification, a monetary ID can be provided. If this takes place, the costs can be 100% d or pro rata depending on the vehicle's age and mileage.



Previous damages

According to available information previous damages were repaired at the vehicle. Traces of repairs, which allow conclusions about the area of repair, were not recognizable during the inspection.

Comments

- Der beiliegende Winterradsatz ist kein Bestandteil des Auslieferungsumfangs.



Figure 1: Diagonal front (left)



Figure 2: Diagonal front (right)



Figure 3: Diagonal rear (left)



Figure 4: Diagonal rear (right)



Figure 5: Interior - front



Figure 6: Interior - rear



Figure 7: Instrument cluster



Figure 8: Instrument panel



Figure 9: Interior 360° view



Figure 10: Cargo area

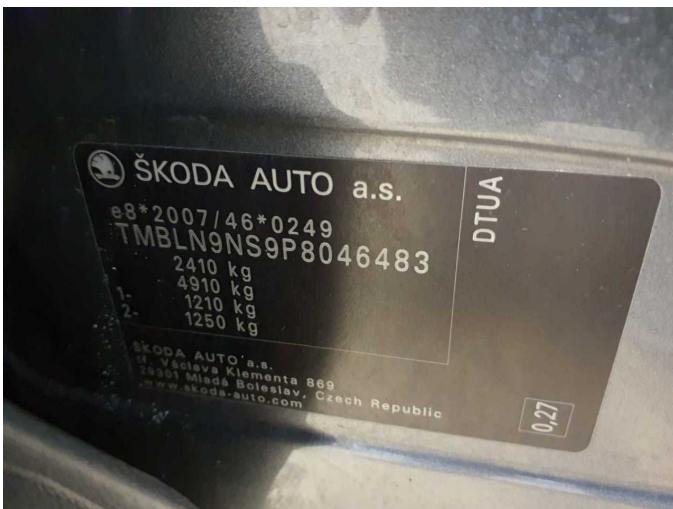


Figure 11: VIN



Figure 12: Mounted tyres

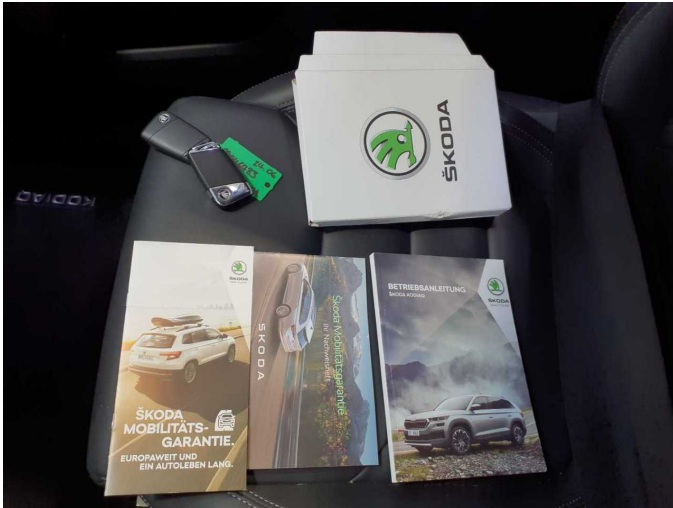


Figure 13: Documents



Figure 14: Additional tyres

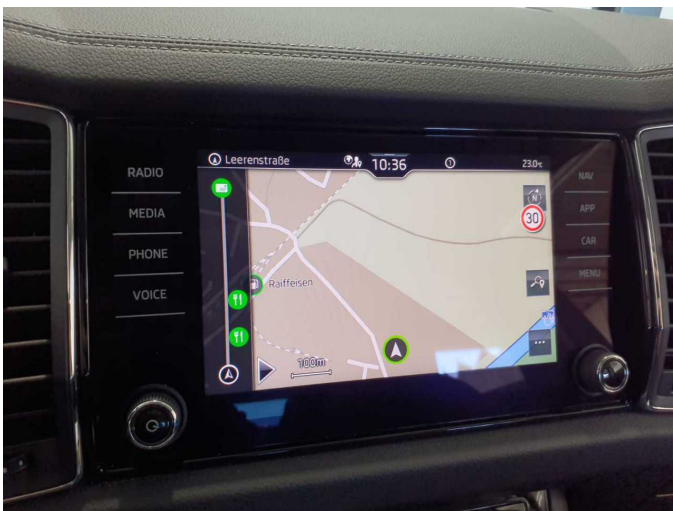


Figure 15: Navigation

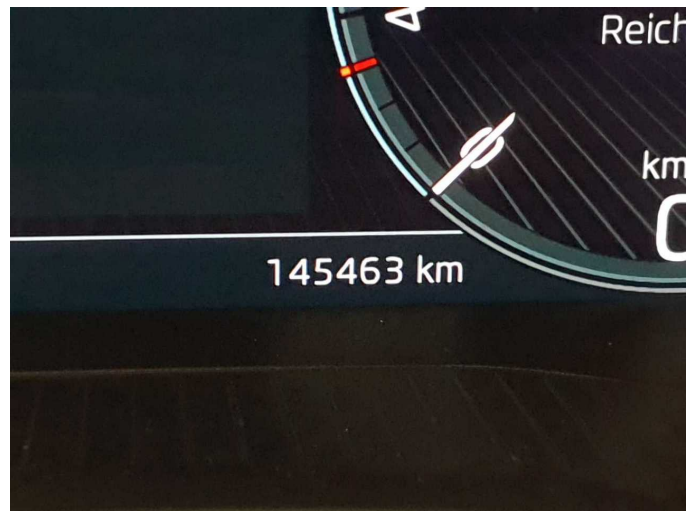


Figure 16: Misc.



Figure 17: Misc.



Figure 18: Misc.



Figure 19: Misc.



Figure 20: Misc.



Figure 21: Misc.



Figure 22: Misc.



Figure 23: Misc.



Figure 24: Misc.



Figure 25: Misc.



Figure 26: Misc.

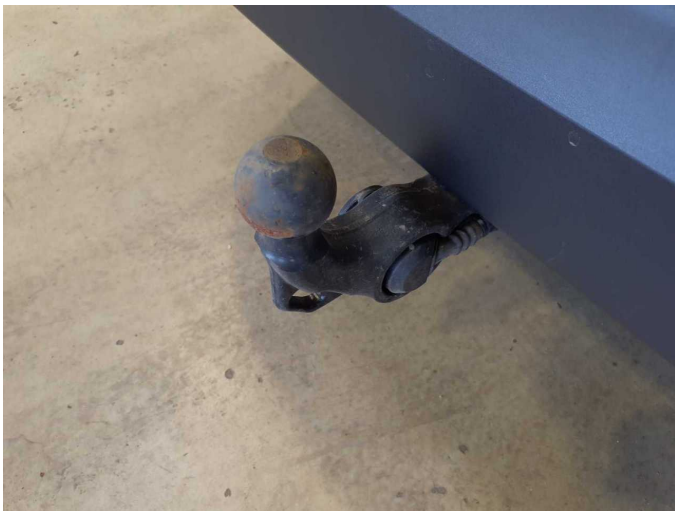


Figure 27: Misc.



Figure 28: Misc.

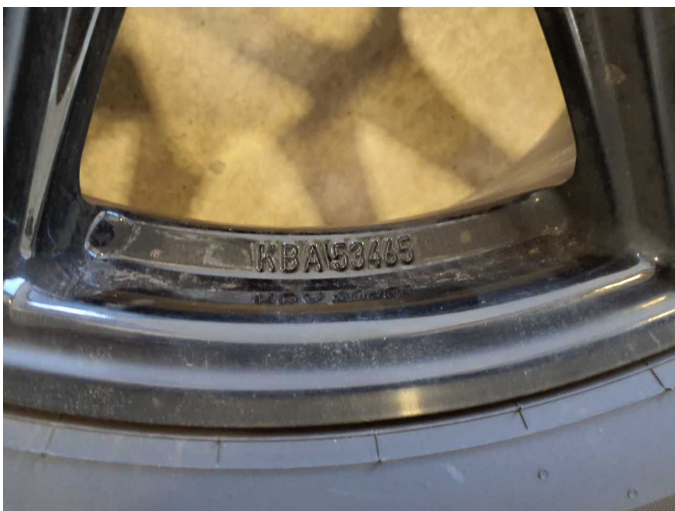
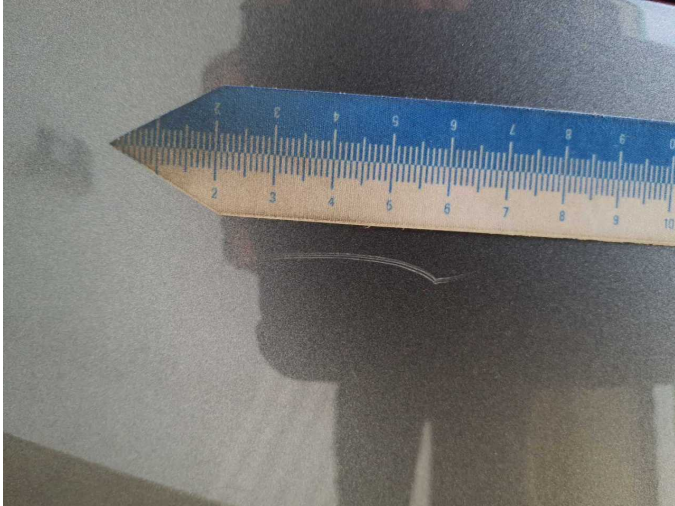


Figure 29: Misc.



Figure 30: Misc.



Damage 1: Rear bumper: Rear bumper - Scratch(es) - Smart repair



Damage 1: Rear bumper: Rear bumper - Scratch(es) - Smart repair



Damage 2: Side panel - rear left side: Side panel - Scratch(es) - Smart repair



Damage 2: Side panel - rear left side: Side panel - Scratch(es) - Smart repair



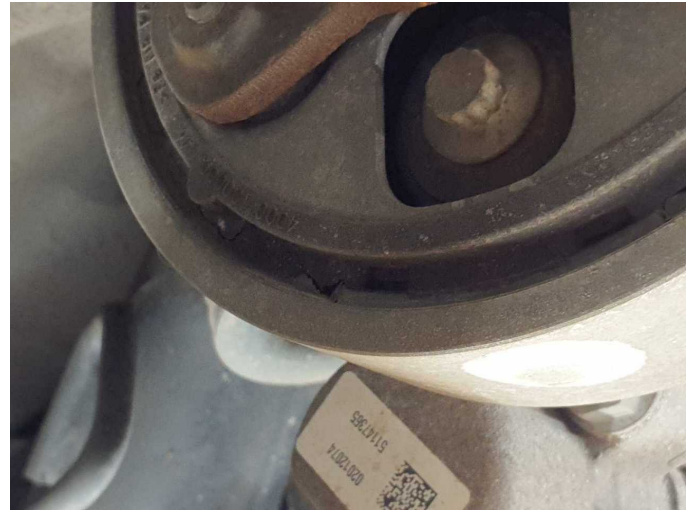
Damage 2: Side panel - rear left side: Side panel - Scratch(es) - Smart repair



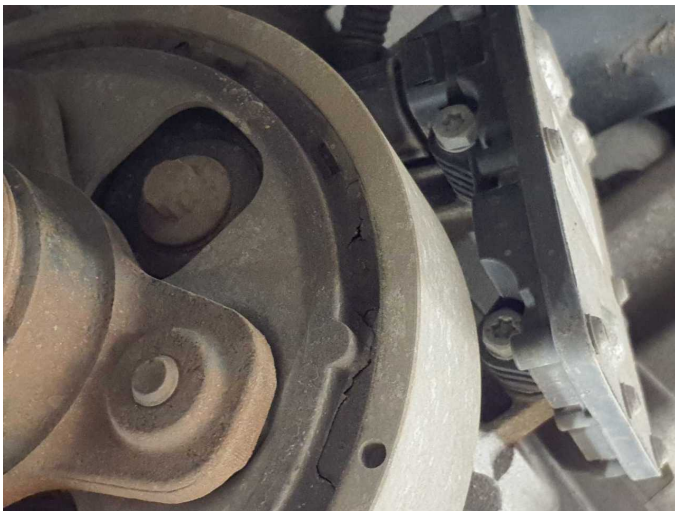
Damage 3: Drive train: Drive train (Harddiscs) - Porous / cracked - Replace



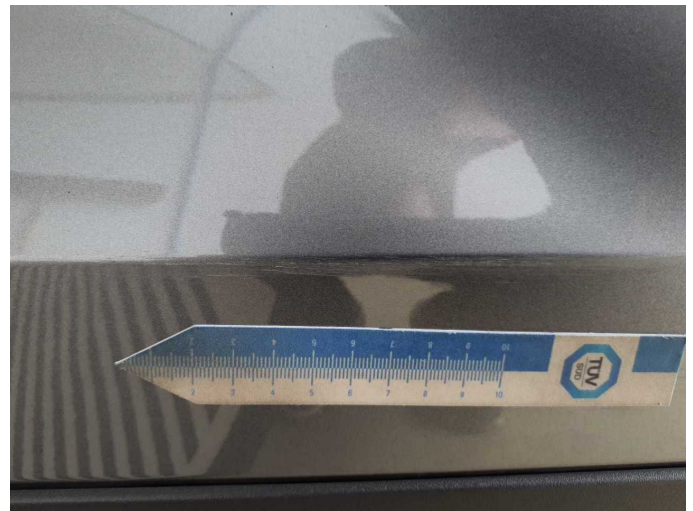
Damage 3: Drive train: Drive train (Harddachscheibe) - Porous / cracked - Replace



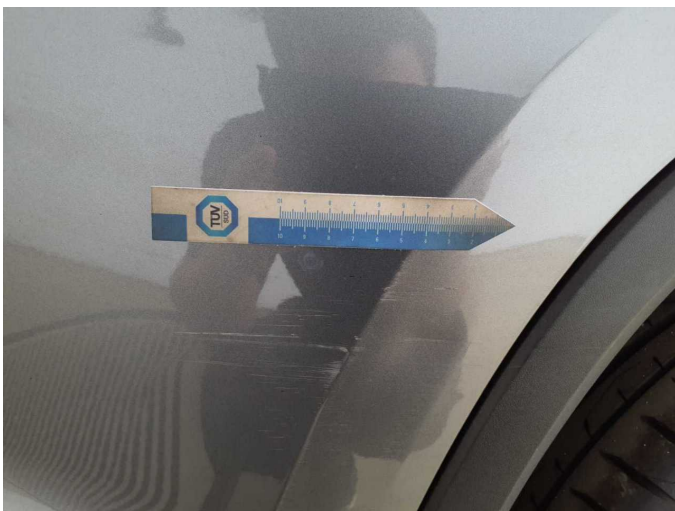
Damage 3: Drive train: Drive train (Harddachscheibe) - Porous / cracked - Replace



Damage 3: Drive train: Drive train (Harddachscheibe) - Porous / cracked - Replace



Damage 4: Door - rear left side: Door - Dent / paintcoat damage - Repair and paint



Damage 4: Door - rear left side: Door - Dent / paintcoat damage - Repair and paint



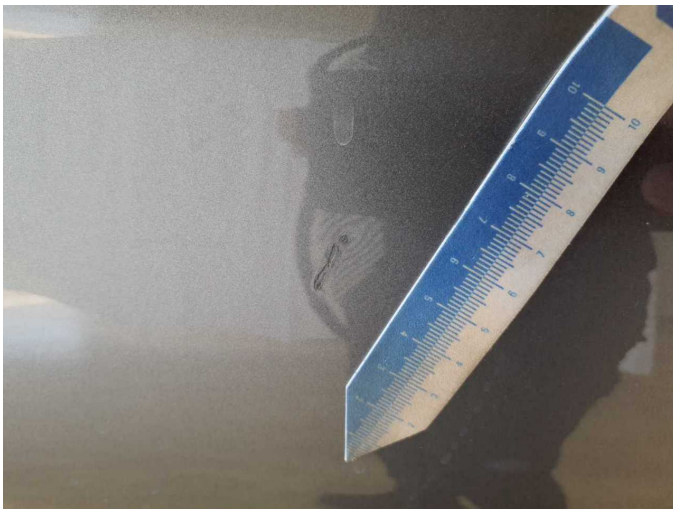
Damage 4: Door - rear left side: Door - Dent / paintcoat damage - Repair and paint



Damage 4: Door - rear left side: Door - Dent / paintcoat damage - Repair and paint



Damage 5: Door - front right side: Door - Dent / paintcoat damage - Repair and paint



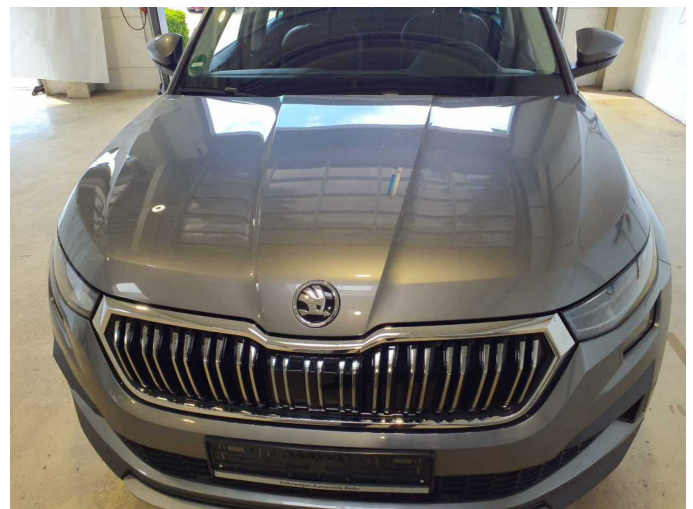
Damage 5: Door - front right side: Door - Dent / paintcoat damage - Repair and paint



Damage 5: Door - front right side: Door - Dent / paintcoat damage - Repair and paint



Damage 5: Door - front right side: Door - Dent / paintcoat damage - Repair and paint



Damage 6: Bonnet: Bonnet - dent(s) - Repair and paint



Damage 6: Bonnet: Bonnet - dent(s) - Repair and paint



Damage 7: Boot lid / rear door: Boot lid - Deformed - Repair and paint



Damage 7: Boot lid / rear door: Boot lid - Deformed - Repair and paint



Damage 7: Boot lid / rear door: Boot lid - Deformed - Repair and paint



Damage 7: Boot lid / rear door: Boot lid - Deformed - Repair and paint



Damage 7: Boot lid / rear door: Boot lid - Deformed - Repair and paint



Damage 8: Vehicle glazing: Windscreen - Stone chips - Replace



Damage 8: Vehicle glazing: Windscreen - Stone chips - Replace



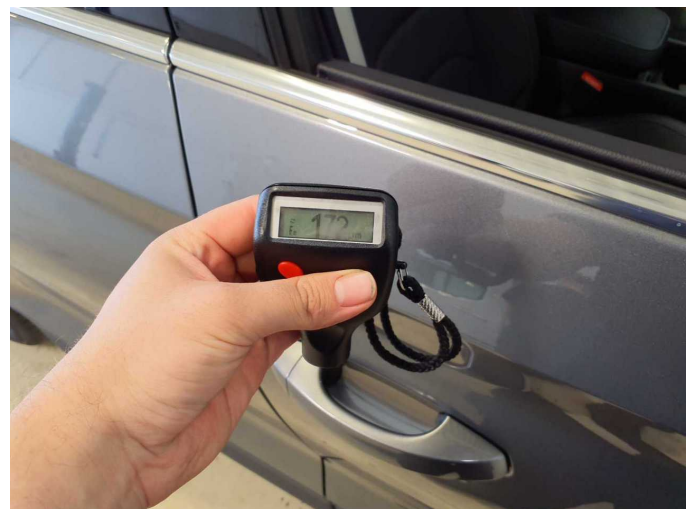
Wear and tear 2: Front bumper: Spoiler - Scratch(es) - No deduction



Wear and tear 2: Front bumper: Spoiler - Scratch(es) - No deduction



Wear and tear 2: Front bumper: Spoiler - Scratch(es) - No deduction



Repainting 1: Boot lid / rear door, Side panel - rear right side, Door - front right side



Repainting 1: Boot lid / rear door, Side panel - rear right side, Door - front right side



Repainting 1: Boot lid / rear door, Side panel - rear right side, Door - front right side



Repainting 1: Boot lid / rear door, Side panel - rear right side, Door - front right side



Repainting 1: Boot lid / rear door, Side panel - rear right side, Door - front right side



Repainting 1: Boot lid / rear door, Side panel - rear right side, Door - front right side



Wartungshistorie

(gemäß Auftraggeber Informationen)

Fahrgestellnummer: TMBLN9NS9P8046483
Hersteller / Modell: SKODA SKODA Kodiaq 2.0 TDI 4x4 DSG Style

Datum	KM-Stand	Beschreibung
05.05.2026	137.813	AU; Wartung Sonstiges
02.12.2025	123.225	Getriebeöl ern/prüfen; Motoröl b. Wartung; Ölfilter ern; Regelwartungsdienst; Wartung Sonstiges
15.09.2025	114.293	Bremse Sonstiges; Bremsklötze hinten; Bremsklötze vorne; Bremsscheiben + Klötze h; Bremsscheiben + Klötze v; Bremsscheiben hinten; Bremsscheiben vorne; Wartung Sonstiges
14.03.2025	93.507	Bremsflüssigkeit; Bremsflüssigkeit ern; Getriebeöl ern/prüfen; Kraftstofffilter ern; Luftfiltereinsatz ern; Motoröl b. Wartung; Ölfilter ern; Ölwechsel - Hinterachse; Regelwartungsdienst; Reparatur Sonstiges; Systemtest/ Eigendiagnose; Wartung Sonstiges
05.07.2024	63.720	Motoröl b. Wartung; Ölfilter ern; Regelwartungsdienst; Wartung Sonstiges
12.01.2024	34.860	Motoröl b. Wartung; Ölfilter ern; Regelwartungsdienst; Wartung Sonstiges