

» Overview

Order number: 1002392943
Order completed: 14.04.2026 14:17
Report number: 10425302
VIN: WVVZZZ3CZPE032693



Front Left 3/4



Rear Right 3/4



Mileage

» Vehicle Data

Vehicle category:	Passenger Car
Vehicle type:	EstateCar
Make:	Volkswagen
Model:	Passat
Manufacturers and type code:	0603 / BQS
Date of first registration:	20.01.2023
Mileage:	125,821 km
Proof of mileage:	ReadOff
Exterior colour:	Mondsteingrau
Roof colour:	Mondsteingrau
Propulsion:	Front
Fuel:	Diesel
Engine size (cc):	2,000 ccm
Performance:	110 kW (150 PS)
Length:	
Height:	
Width:	
Permitted total weight:	
Wheelbase:	
Number of powered axles:	2
Cylinders:	4
Euronorm:	Euro 6
Number of doors:	4
Number of seats:	5
Gearbox:	Automatic 7-speed
Upholstery type:	Lining fabrics
Interior colour:	Titanschwarz/Titanschwarz/Titanschwarz
Number of keys:	2

» Documents & Maintenance

Statutory inspection date:	02.2028
Registration certificate available:	Yes
Registration certificate received:	No
License plate:	None
Maintenance book:	Digital
Maintenance:	Not testable
Maintenance last date:	
Maintenance last mileage:	
Remainder until next maintenance:	12,800 KM

<p>"Business Premium" package incl. navigation system</p> <p>12-V outlet in center console in rear and in luggage compartment</p> <p>2 beverage holders in front with cover</p> <p>2 USB-C ports in the front, 1 USB-C charging socket on the center console in rear, charging capacity up to 45 W</p> <p>230-V outlet in center console in rear</p> <p>3 head restraints in rear</p> <p>3-point seat belt for center rear seat</p> <p>3-point seat belts in front with height adjustment and seat belt pretensioners</p> <p>3-point seat belts with seat belt pretensioners for the outer rear seats</p> <p>4 alloy wheels "Sepang" 6.5J x 16</p> <p>4-cylinder diesel engine 2.0 l</p> <p>4-cylinder diesel engine 2.0 l TDI, 110 kW</p> <p>7-speed automatic transmission or dual-clutch transmission DSG, note: PR family EDF</p> <p>8 speakers</p> <p>Adaptive Cruise Control ACC stop & go incl. speed limiter</p> <p>Air Care Climatronic 3 zone automatic climate control w/ allergen filter, enhanced air filter a. controls in rear</p> <p>Alternator 140 A</p> <p>App-Connect incl. App-Connect Wireless for Apple CarPlay and Android Auto</p> <p>Aspherical exterior mirror on driver side</p> <p>Aut. headlight control with separate daytime running light, entry lighting and manual exit lighting</p> <p>Auto-dimming interior rearview mirror</p> <p>Automatically-heated washer nozzles in front</p> <p>Autonomous Emergency Braking Front Assist (for Adaptive Cruise Control ACC up to 210 km/h)</p> <p>Basic equipment variant</p> <p>Battery 420 A (70 Ah)</p> <p>Black roof rails</p> <p>Body-colored lower side trims</p> <p>Bumpers with body-colored decorative trims</p> <p>Business</p> <p>Carpet mats in front and rear</p> <p>Carrier frequency 433.92 MHz-434.42 Mhz</p> <p>Category 0</p> <p>Child safety lock</p> <p>Chrome moldings on the side windows</p> <p>Comfort seats in front</p> <p>Decorative inserts "Cross Hatch" for dashboard and door trim panels</p> <p>Decorative inserts "Piano Black" for center console</p> <p>Digital radio reception DAB+</p>	<p>Disc brakes in front</p> <p>Disc brakes in rear</p> <p>Diversity antenna for FM reception</p> <p>Door and side trim panel in foam film and woven fabric</p> <p>Driver alert system</p> <p>Driver and front passenger airbag with front passenger airbag deactivation, including knee airbag on driver side</p> <p>Driving on the right</p> <p>Dual-clutch transmission DSG DQ381</p> <p>Dynamic Road Sign Display</p> <p>Electric auxiliary air heater</p> <p>Electromechanical parking brake with Auto Hold function</p> <p>Electromechanical speed-sensitive power steering</p> <p>Electronic engine sound</p> <p>Electronic immobilizer</p> <p>Electronic Stability Control and electromechanical brake booster</p> <p>Elimination of nameplate for engine designation on luggage compartment lid</p> <p>Emergency call service; no registration required, service is activated upon delivery</p> <p>Emission standard EU6 AP</p> <p>Equipment options subset for Germany</p> <p>Exterior mirrors, power-adjustable and heated, surround lighting, auto-dimming on driver side</p> <p>First aid kit, warning triangle and safety vest</p> <p>Folding luggage compartment floor</p> <p>Folding trailer hitch, with electric release</p> <p>Front center armrest, height- and longitudinally adjustable, w/ storage comp., 2 vents w/ chrome louvers in rear</p> <p>Front seats with height adjustment, ergoComfort seat on driver side, with electrical backrest adjustment</p> <p>Front vent and rotary light switch illuminated, with chrome bezel</p> <p>Front-wheel drive</p> <p>Fuel system for diesel engine</p> <p>Fuel tank with a volume of 66 l</p> <p>Gearshift knob in leather</p> <p>Green heat-insulating glass windows on sides and in rear</p> <p>Headlight range control</p> <p>Heated front seats</p> <p>Hill Start Assist</p> <p>Illuminated vanity mirror in sun visors, extractable sun visors</p> <p>Initial standard fuel filling</p> <p>Inserts of front seats and outer rear seats in fabric "Business"</p> <p>Instrument cluster with electronic speedometer, odometer and trip odometer, tachometer</p>
--	---

Interior lights with switch-off delay and dimmer, 2 LED reading lights in front and 2 in rear	Proactive passenger protection system in combination with Front Assist
ISOFIX anchorage points for mounting of 2 child seats on rear bench seat, also for i-Size child seats	Radio
Keyless Start without SAFELOCK	Rain sensor
Knee airbag on driver side, side airbags and seat belt pretensioners for outer rear seats	Rear exhaust tailpipe (standard)
Laminated safety glass windshield, heat- and sound-insulating	Rear fog light on one side, back-up light on both sides
Leather-wrapped multi-function steering wheel with shifting paddles	Rear shock absorption, basic version 1
LED entry/warning lights in front doors	Rear view camera system
LED front fog lamps and cornering light	Refrigerant R1234yf
LED headlamps with LED separate daytime running light	Regional code " ECE " for radio
LED light unit in front footwell	Remote unlocking for tailgate/trunk lid
LED rear combination lamps	Right exterior mirror, convex
Left-hand drive	Safety-optimized front head restraints, longitudinally and height adjustable
License plate carrier in front and rear (ECE)	Semi-automated driving assistance Travel Assist and lane keeping system Lane Assist
LongLife Service Regime	Service indicator 30 000 km or 2 years (variable)
Luggage compartment cover extractable and removable	Shock absorption in front
Lumbar supports in front, power- adjustable on driver side, massage feature on driver side	Side airbags for outer rear seats, incl. side airbags in front and curtain airbag system
Manual in German (Germany)	Small navigation system M&I (Media & Internet package)
Mass damper for steering wheel, 36 Hz	Special identification label for EC for M1 passenger vehicles
Mistral Gray headliner	Standard battery/alternator capacity
Mobile phone interface "Comfort" with inductive charging feature	Standard climatic zones
Model update, week 45	Standard engine starter
Model year change 2023 II	Standard manufacturing sequence
Model year change 2023 III	Standard paint coating
Multifunction camera	Standard pedal cluster
Multi-function display "Premium" with multi-color display	Standard wheel bolts
Navigation system "Discover Media" incl. Streaming & Internet	Start-stop system with regenerative braking
Net partition	Steel spare wheel with original equipment tire
No special edition	Suspension range 34 installation control only, no requirement forecast
No special purpose vehicle, standard equipment	Textile luggage compartment lining
Non-folding front passenger seat backrest	Tire Pressure Monitoring System
Non-smoker's package: Storage compartment and 12-V outlet in front	Tires 215/60 R16, rolling resistance class A
Not hot country	Tires without specification of tire brand
Online service, with OCU, with head unit coding, without engine immobilizer interconnection	Tool kit and jack
Operating permit, alteration	Transport protection film (minimum protection) with additional transport protection measures
Park Distance Control - warning signals for obstacles in the front and rear	Two-tone horn
Part set without country-specific prescriptive standard	Type approval country Germany
Pedestrian Monitoring	Unsplit rear bench seat, asymmetric folding backrest, center armrest with storage comp. and load-through hatch
Plastic loading edge protection	Vehicle class differentiation -3G0-
Plastic scuff plates in door apertures	Vehicles with special upgrade measures
Preparation for We Connect and We Connect Plus	Voice control
	Wagon

Warning signal and warning lamp for front and rear seat belts not fastened

Weight range 4 installation control only, no requirement forecast

Wheelbase

Winter wheels (additional), 4 steel wheels 6.5J x 16, AirStop® snow tires 215/60 R16 H, wheel trims

With electronic steering column lock

Without activated carbon canister with SCR

Without Adaptive Chassis Control

Without add. lights (interior lighting)

Without additional front underbody guard

Without alternative drive system

Without auxiliary heater/parking heater

Without CD/DVD for navigation

Without charging cable

Without child seat

Without clock

Without delivery equipment

Without differential lock

Without ECO function

Without electric motor (hybrid)

Without fire extinguisher

Without front passenger seat control

Without garage door opener

Without headlamp washer system

Without head-up display

Without integrated toll system

Without lane change assist

Without light control

Without locking and starting systems

Without preparation for rotating beacon/siren combination

Without preparation for two-way radio installation

Without preparation for VTS (vehicle tracking system)

Without rear spoiler

Without roll-up sunshade

Without roof insert (standard roof)

Without seat ventilation/massage seat

Without second battery

Without special body measures

Without tie down straps/net/pocket

Without vehicle inlet

» Tyres

MOUNTED TYRES

Make	Location	Position	Type	Rim	Dimensions	Profile depth
Semperit	Front	Left	Winter	Steel	215/60 R 16 99 H	3.0 mm
Semperit	Front	Right	Winter	Steel	215/60 R 16 99 H	3.0 mm
Semperit	Rear	Left	Winter	Steel	215/60 R 16 99 H	7.0 mm
Semperit	Rear	Right	Winter	Steel	215/60 R 16 99 H	8.0 mm

Permitted: Yes

Roadworthy: No

UNMOUNTED TYRES

Make	Location	Position	Type	Rim	Dimensions	Profile depth
Dunlop			Summer	Aluminium	215/60 R 16 95 V	4.0 mm
Dunlop			Summer	Aluminium	215/60 R 16 95 V	4.0 mm
Continental			Summer	Aluminium	215/60 R 16 95 V	5.0 mm
Continental			Summer	Aluminium	215/60 R 16 95 V	5.0 mm

Permitted: Yes

Roadworthy: Yes

SPARE/EMERGENCY TYRE & ACCESSORIES

Spare tyre provided: Yes

Make	Location	Position	Type	Rim	Dimensions	Profile depth
Continental	Spare		Summer	Steel	215/60 R 16 95 V	6.0 mm

Permitted: Yes

Roadworthy: Yes

Toolkit present: Yes

Jack present: Yes

» Devaluation Factors

Nr	Location	Damage type	Repair type
1	Tyres	Out of tolerance	Replace
2	Brand badge F	Broken	Replace
3	Boot lid covering R	Scratch(es)	Replace
4	Interior	Smell	Ozone treatment
5	Side wall RL	Dent(s)	Paintless dent repair
6	Door FL	Bad repair	Polish
7	Floor mat(s)	Burned	Replace

» Usage Damages

Nr	Location	Damage type	Repair type
1	Bumper F	Stone chip(s)	Acceptable
2	Bonnet	Stone chip(s)	Acceptable
3	Bonnet	Dent(s)	Acceptable
4	Outside rear-view mirror housing L	Stone chip(s)	Acceptable

» Commercial devaluation

Accidental vehicle:	Yes
Known previous damages:	Yes
Previous damages detectable:	Yes
Repainting present:	Yes
Repainting professionally executed:	No
Paint thickness measurement performed:	Yes - with abnormalities/deviations

Nr	Location	Damage	Repair type	Repair cost
1	Other	Part of hull loss		€ 1,275.65
2	Other	Fully comprehensive harm		€ 3,413.79
3	Other	Fully comprehensive harm		€ 2,206.96
Total without VAT:				€ 6,896.40

PAINTTHICKNESS MEASUREMENT RESULTS

Part	Paint (µm)
Paint thickness Wing FL (µm)	152.0
Paint thickness Door FR (µm)	182.0
Paint thickness Door RR (µm)	166.0

At least 3 measurements were carried out per component.

» Notes On The Assessment**Details of the assignment and the scope of the assessment:**

The order was placed to prepare a condition report on the described vehicle.

The vehicle condition assessment was carried out in accordance with the order on the basis of the standards for vehicle assessments specified by the client. The expert makes the findings in the individual case on the basis of his own expertise and at his own expert discretion.

Vehicle identification:

WVWZZZ3CZPE032693

VIN checked and matches documentation

Vehicle condition:

Dirty

Inspection condition:

Insufficient

Lifting platform/lifting equipment used:

No

Testdrive carried out:

Yes

Engine test carried out:

Yes

» **Remarks**

This copy was generated electronically. It is valid without an original signature.

» Commercial Pictures



Front Left 3/4



Front Right 3/4



Rear Left 3/4



Rear Right 3/4



Mileage



Tools



Sill outer L



Sill outer R



Chassis nr



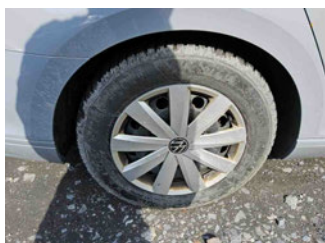
Wheel FL



Wheel FR



Wheel RL



Wheel RR



Additional wheel 1



Additional wheel 2



Additional wheel 3



Additional wheel 4



Spare wheel



Central console



Engine compartment



Documents



Interior arrangement



Registration Certificate



Towbar



Paint thickness Door RR



Paint thickness Door FR



Paint thickness Wing FL



History Maintenance



Interior - front



Interior - rear

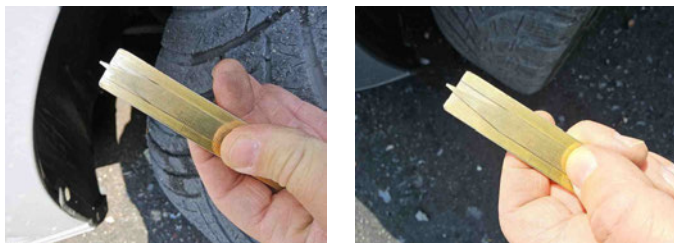


GPS/Radio

» Devaluation Damages

DEVALUATION FACTORS

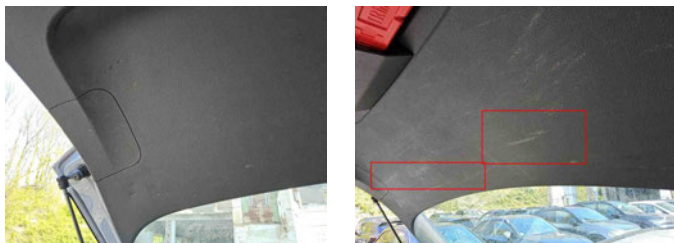
1 - Tyres - Out of tolerance - Replace



2 - Brand badge F - Broken - Replace

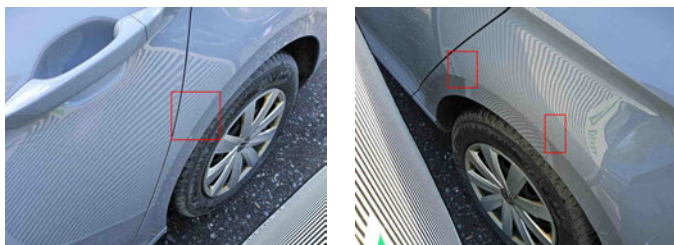


3 - Boot lid covering R - Scratch(es) - Replace



4 - Interior - Smell - Ozone treatment

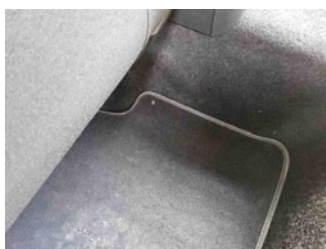
5 - Side wall RL - Dent(s) - Paintless dent repair



6 - Door FL - Bad repair - Polish	
Comment	matte Lackierung augenscheinlich, prüfen - Schadenerweiterung möglich



7 - Floor mat(s) - Burned - Replace



USAGE DAMAGES

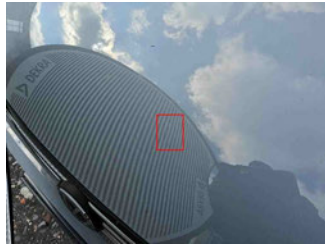
1 - Bumper F - Stone chip(s) - Acceptable	
Comment	Steinschlagbelastung laufleistungsbedingt



2 - Bonnet - Stone chip(s) - Acceptable	
Comment	Steinschlagbelastung laufleistungsbedingt



3 - Bonnet - Dent(s) - Acceptable



4 - Outside rear-view mirror housing L - Stone chip(s) - Acceptable

