

Expertise

Protocol number: 45880424
Order No. / Reference: 26390281
Inspection date: 5 Jun 2026

Manufacturer: Mercedes-Benz

Model: GLC 300 de 4Matic 9G-TRONIC AMG Line

VIN: W1N2539111V284469



Vehicle details

Manufacturer / Type / Model / Equipment

Mercedes-Benz GLC 300 de 4Matic 9G-TRONIC AMG Line

Vehicle Identification number	W1N2539111V284469
Mileage (Read)	145,628 km
First registration	12 Feb 2021
Number of holders	1
Next periodical technical inspection	02/2028 (Report not on hand)

Power / Engine displacement	143 kw / 1,950 ccm
Fuel type / Cylinder	Hybr.D/E ext.auf1 / 4
Gearbox / Number of gears	Automatic / 9
Type of drive	All-wheel drive
Type of vehicle	SUV

Colour / colour code	OBSIDIANSCHWARZ - METALLICLACK
Doors / Seats	5 / 5
Upholstery type	Artificial leather
Colour of upholstery	Black

Re-import	no
readiness to drive	Roadworthy



Vehicle details			
Maintenance booklet / proof	digital proof / complete	Next maintenance in	82 Tag(e)
Last service on / at	08/2025 at 132,570 km		
Key is / should be	2 / 2	FZG documents	ZB#2 (B) was available (copy), ZB#1 (S) was not available.
		Letter No.	FX754189
Previous damage / Accident	Detectable	Repainting	Detectable
Inspection conditions	sufficient	Lifting equipment / pit	yes
Test drive	Not performed	Engine function test	Performed
readiness to drive	Roadworthy		
Manufacturer key number/ type code number	2222 / ASV 00021		
Emission standard	EURO6;WLTP;AP;PI/CI; M, N1 I	fine dust sticker	
Permitted total weight	2,650 kg	Empty weight	

Tyres

Mounted tyres				
#	Tyre size	Type of tyre	Manufacturer	Tread depth
1)	235/60 R18 103H	Winter tyres on Light alloy	Pirelli	6mm / 6mm
2)	235/60 R18 103H	Winter tyres on Light alloy	Pirelli	6mm / 6mm

Additional tyres				
#	Tyre size	Type of tyre	Manufacturer	Tread depth
1)	235/55 R19 105W	Summer tyres on Light alloy	Pirelli	7mm / 7mm
2)	235/55 R19 105W	Summer tyres on Light alloy	Pirelli	7mm / 7mm

Replacement				
Typ	Tyre size	Type of tyre	Manufacturer	Tread depth
	Tirefit	Expiration date 01/2026		

Legend: Tread depth information for the left tire is listed first, for the right tire it is listed second on the axle in the direction of travel.

TÜV SÜD Auto Partner GmbH
Wiesenring 2
04159 Leipzig

Inspection location
Hartmann Fleet Professionals GmbH
Leerenstraße 25
29683 Bad Fallingbommel



Equipment



Standard equipment

- Airbag for driver and front passenger
- Airbag: Sidebag for driver and front passenger (combined thorax/ pelvisbag)
- Acoustic environmental protection (To ensure that your vehicle does not become a danger to pedestrians and cyclists even when driving purely electrically and almost silently, the acoustic environmental protection generates a Mercedes-Benz specific sound outside the vehicle up to a speed of 30 km/h.)
- Anti-lock braking system (ABS)
- Automatic passenger airbag deactivation
- Heated exterior mirrors on the left and right, electrically adjustable from the inside (with aspherically curved mirror glass and integrated turn signal light)
- Roof rails in polished aluminum
- Diesel particulate filter
- Tachometer
- DYNAMIC SELECT
- Electronic Stability Program (ESP)
- Chassis with higher ground clearance (In this chassis variant, the body is raised by 20 mm)
- electric parking brake
- Transmission: 9G-TRONIC
- rear window wiper
- KEYLESS-GO start function
- Remote trunk lid release
- Instrument cluster with 2 tubular round instruments, 13.97 cm (5.5") multifunction display
- Communication module (LTE) for using Mercedes me connect services (The communication module (LTE) offers you a clear increase in comfort and safety. It constantly connects the vehicle to the internet – so that you can use helpful services such as the Live Traffic Information from Mercedes me connect. Two mobile antennas and an LTE-enabled SIM card ensure a fast connection.)
- LED High Performance headlights (with integrated daytime running lights, LED taillights)
- Steering column mechanically adjustable in height and length
- Steering: Sport direct steering
- Mercedes-Benz emergency call system
- Package: Storage (map pockets on the back of the front seats - net on the load floor - folding box under the load floor - 12V socket in the load compartment on the left - cargo bars - two USB-C ports in the rear)
- Package: Interior lighting (More light, more atmosphere, better orientation: The interior lighting package provides more comprehensive direct and indirect lighting. The additional light elements create a pleasant atmosphere and make operation easier.)
- Upholstery: ARTICO leatherette/DINAMICA microfiber
- Radio: MBUX multimedia system
- Airbag: Kneebag for driver
- Airbag: Windowbags
- Active Brake Assist (can help avoid rear-end collisions with vehicles ahead, whether moving or stationary, as well as collisions with moving pedestrians and cyclists. In addition to distance and collision warnings, it primarily offers brake boosting – up to and including autonomous emergency braking.)
- 4MATIC all-wheel drive
- ATTENTION ASSIST (can detect typical signs of fatigue through driver behavior and warn the driver of increasing fatigue or inattentiveness)
- On-board computer
- Brake system with larger brake discs on the front axle (drilled front brake discs and front brake calipers with Mercedes-Benz lettering).
- Third brake light in LED technology
- EASY-Pack cargo cover (removable)
- Driving light assistant
- Electric window regulator, 4-way (with comfort operation and anti-pinch protection)
- Black floor mats with AMG lettering
- Heated rear window (with timer)
- Black fabric headliner
- Climate: THERMATIC automatic climate control with 2 climate zones (The THERMATIC automatic climate control with 2 climate zones offers individual climate comfort in the front seats: driver and front passenger can set the temperature separately for their side. Thanks to the automatic climate control and the sensitive sensor system, this is kept constant without any manual adjustments.)
- Headrests adjustable in 5 ways (4-way for driver and front passenger, and 2-way in the rear)
- Paint finish: Solid
- Charging system: AC on-board charger (AC charging)
- Steering wheel: Multifunction sports steering wheel in 3-spoke design in black Nappa leather (with black decorative stitching, flattened at the bottom, deeply embossed in the grip area, touch control buttons and steering wheel trim in silver chrome galvanized)
- Navigation accessories: Extended MBUX functions (personalization (profiles) and prediction functions - LINGUATRONIC with natural language understanding - activation via "Hey Mercedes" - Wi-Fi hotspot - internet radio)
- Package: OFF-ROAD Exterior (lower part of the front bumper silver-chromed, radiator grille with chrome trim strips, 45.7 cm (18") 5-spoke alloy wheels painted tremolite grey and polished with 235/60 R 18 tires on 8 J x 18 ET 38 rims, suspension with increased ground clearance, front bumper with increased approach angle)
- Radio accessories: Digital radio
- Tire pressure monitoring system (TPMS)



- Radio accessories: Touchpad (integrated into the center console, including a hand rest - single and multi-finger gestures, swiping movements and zoom gestures by spreading and pinching the fingers - recognizes handwritten characters: letters, special characters and numbers - clear haptic feedback)
- Windscreen wipers with rain sensor
- Power steering
- Seat: Front sports seats
- Seats: i-Size child restraint system on the outer rear seats
- Seats: Front seats electrically adjustable (with electric adjustment for seat height and backrest angle, as well as mechanical adjustment for longitudinal adjustment and headrests)
- High-visibility vest for drivers
- Immobiliser
- Central locking (with interior switch, automatic locking (can be deactivated) and crash sensor with emergency opening)

Extra equipment

- Towbar with ESP trailer stabilization (fully electrically foldable and retractable)
- Interior headliner fabric crystal grey (Only in combination with upholstery in black (001, 101, 221, 301, 651))
- Paint finish: Metallic
- Charging cable for wallbox and public charging stations, 5m, smooth (This charging cable, also called Mode 3 cable, allows you to charge the vehicle battery at the wallbox or at public charging stations with up to 7.4 kW (Type 2, 3-phase, 20 A).)
- Package: AMG Line Exterior (Plug-in Hybrid) (AMG Styling, consisting of AMG front apron with sporty air intakes and chrome trim element, AMG rear apron in diffuser look with black insert, diamond grille with chrome pins, integrated Mercedes star and matte iridium silver louvre with chrome inlay, 19-inch (48.3 cm) AMG light-alloy wheels in 5-twin-spoke design, painted tremolite grey and high-sheen finish with 235/55 R19 tires on 8 J x 19 ET 38 rims, 2 visible tailpipe trims permanently integrated into the bumper)
- Package: Public Charging (includes the Mercedes me Charge service and the Mode 3 charging cable)
- Upholstery: ARTICO black leatherette
- Wheels: 48.3 cm (19") AMG light-alloy wheels, 4-piece set in 5-twin-spoke design (tremolite grey painted and high-sheen finish with 235/55 R19 tires, 8 J x 19 ET 38)
- Heat-insulating dark tinted glass all around from the B-pillar back

- Remote Services Plus (The Remote Services Plus package transforms mobility into a new experience, offering greater comfort and safety. Status queries provide information about the remaining range. You can remotely control certain functions and locate your vehicle. Services such as maintenance management coordinate service appointments, saving you valuable time.)
- Seats: Folding rear seat backrests (40/20/40 split including Easy Pack Quickfold and center armrest with double cupholder and storage compartment)
- Cruise control (Drive relaxed and fuel-efficiently, especially on longer journeys. Simply select your desired speed and your vehicle will regulate it. In addition to the cruising speed, the speed limiter helps you maintain a maximum speed. This increases road safety and protects you from expensive speeding tickets.)
- Decorative elements: black piano lacquer finish/light longitudinally brushed aluminum

- EASY-Pack tailgate with electric operation for opening and closing
- Instrument panel and door sills in ARTICO man-made leather
- Charging cable for household socket, 5m, smooth (This charging cable, also called Mode 2 cable, allows you to charge the vehicle battery at the household socket with up to 2.3 kW (230 V, 1-phase, 10 A) and fits sockets of type E/F CEE 7/7.)
- Package: Advanced Park
- Package: Assistance (Mirror package: Electrically folding exterior mirrors, lowering right exterior mirror, automatic dimming function; Lane package: Active lane keeping assist, blind spot assist)
- Package: Business (for plug-in hybrid vehicles) (Advanced Parking Package: Active Parking Assist PARKTRONIC with reversing camera; Advanced Infotainment Package: Media display with touch operation, smartphone integration - Apple CarPlay and Android Auto, connectivity package navigation, traffic sign assist; Comfort Package: Heated seats for driver and front passenger, seat comfort package - electric and manual adjustment options for the front seats)
- TIREFIT with tire inflation compressor
- Partition net for luggage compartment separation (and occupant protection)
- Decorative elements: open-pore black ash wood / light longitudinally brushed aluminum



Brief expert findings

Documents submitted	At the time of the inspection, the vehicle registration certificate Part 2 (title) was available, but the vehicle registration certificate Part 1 (document) was not. (Copy)
VIN comparison	The vehicle identification number (VIN) was read from the vehicle and its conformity with the submitted documents was confirmed by the undersigned during the inspection.
Inspection	The inspection conditions were sufficient for the assessment of the vehicle. Lifting equipment and/or a pit were available for examining the vehicle.
Test drive	No test drive/shunting maneuver was carried out during the inspection of the vehicle.
Engine function test	An engine test run was performed.
readiness to drive	The vehicle was roadworthy at the time of inspection.

Value reducing factors

No.	Component group	Description
1	Trim / covers	Cargo area - lining - right side (Taster Sitzentriegelung reingedrückt) - Differs from the original configuration - Un- / install
2	Steering system	Steering wheel - Worn - Smart repair
3	Boot lid / rear door	Boot lid - Scratch(es) - Smart repair
4	Front bumper	Front bumper - Scratch(es) - Paint
5	Door - front right side	Door - Scratch(es) - Paint

Wear and tear

No.	Component group	Description
1	Body	A-pillar - left side - Stone chips - No deduction
2	Bonnet	Bonnet - Stone chips - No deduction
3	Side panel - rear left side	Sill - Scratch(es) - No deduction
4	Door - front left side	Door edge - Scratch(es) - No deduction

The vehicle shows signs of wear and tear commensurate with its age and use.

Previous damages

No.	Previous damage	Extent of damage (Net)
1	Side right, Professionally repaired, Invoice of repair done	Non-existent

Repainting

No.	Repainting
1	Door - rear right side, Professionally carried out, Invoice of repair done

Paint coat thickness measurement

Door - rear right side	234 µm
------------------------	--------



Order/Scope of Order

An order was placed to prepare a sales report for the described vehicle. This report includes the following:

- Description of key vehicle information
- Documentation of equipment features
(Delivery by third-party service providers)
- Documentation of damage, defects, missing parts
- Documentation of prior damage, unrepaired prior damage, repainting
- A brief visual or functional inspection of the equipment details, if possible.
(Functional testing of driver assistance systems is not included in the scope of services!)
- a photographic documentation of the vehicle

Basis for the order

This product is based on the guidelines for vehicle returns and valuations published by Alphabet Fleet GmbH. The expert makes the specific findings in each individual case objectively, within the framework of the prescribed standards, based on their own expertise.

The vehicle inspection takes place in a fully assembled, unassembled state.

Damage or defects that can only be detected during disassembly/diagnostic work or through further investigation remain within the realm of prognostic risk. An increased risk exists due to concealed defects caused by fraudulent misrepresentation and which were not identifiable by the expert.

Damage or defects resulting from normal use or wear and tear of the vehicle will be accepted in accordance with the applicable standard.

There was no explicit identification or monetary consideration of the expected features within the product.

Features which, in their nature and extent, slightly exceed normal use but do not constitute unacceptable damage, will be documented and indicated as signs of wear, if applicable.

Damage or defects that, according to the applicable standard, can no longer be attributed to normal use or wear and tear are listed under "Value Reducing Factors" in the product description.

Depending on the product specification, a monetary ID can be provided. If this takes place, the costs can be 100% or pro rata depending on the vehicle's age and mileage.

Previous damages

Professionally repaired previous damages were found at the vehicle.

Comments

- Für den montierten Radsatz wurde kein Nachweis erbracht.

- Winterradsatz ist kein Bestandteil des Auslieferungsumfangs.



Figure 1: Diagonal front (left)



Figure 2: Diagonal front (right)



Figure 3: Diagonal rear (left)



Figure 4: Diagonal rear (right)



Figure 5: Interior - front



Figure 6: Interior - rear



Figure 7: Instrument cluster



Figure 8: Instrument panel



Figure 9: Interior 360° view



Figure 10: Cargo area

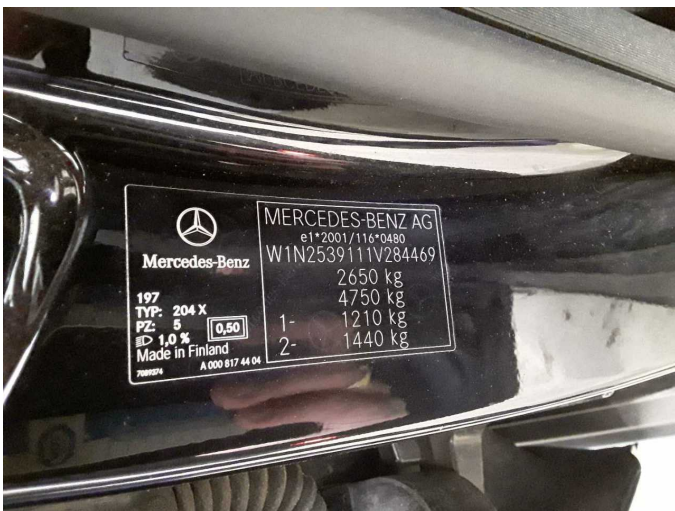


Figure 11: VIN



Figure 12: Mounted tyres



Figure 13: Documents

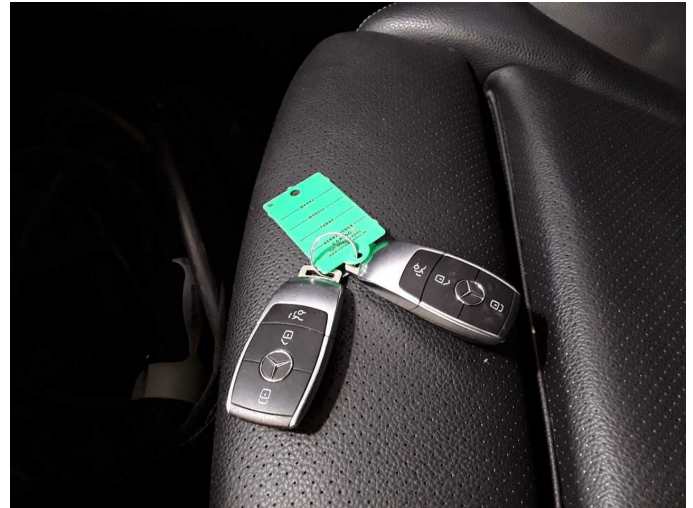


Figure 14: Documents



Figure 15: Documents

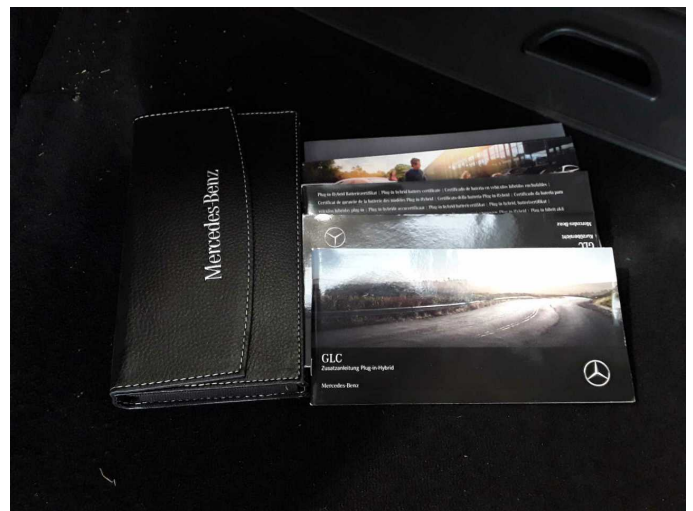


Figure 16: Documents



Figure 17: Additional tyres

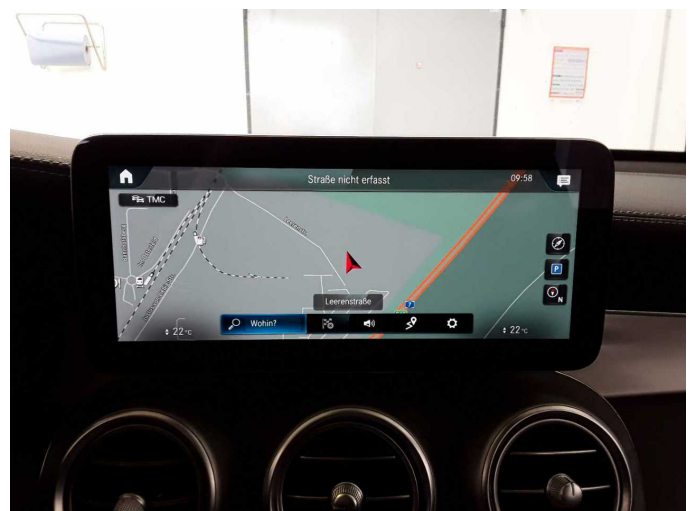


Figure 18: Navigation



Figure 19: Misc.



Figure 20: Misc.

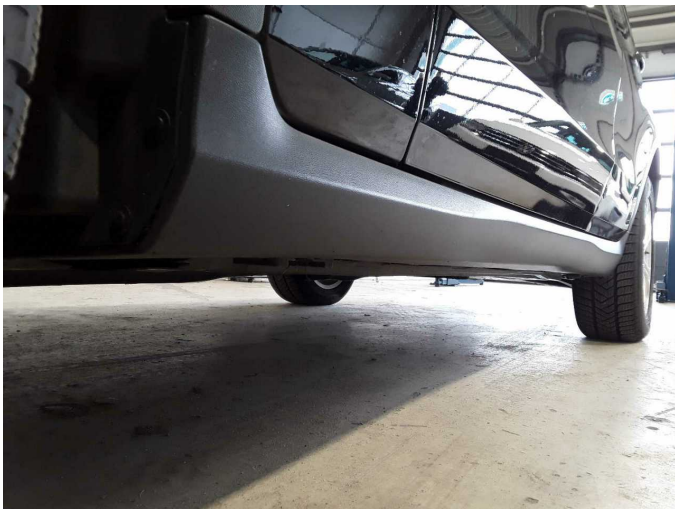


Figure 21: Misc.



Figure 22: Misc.



Figure 23: Misc.

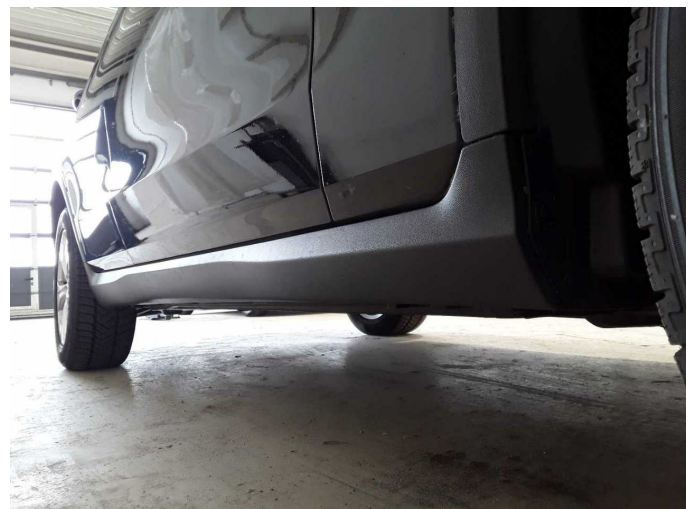


Figure 24: Misc.



Figure 25: Misc.



Figure 26: Misc.



Figure 27: Misc.

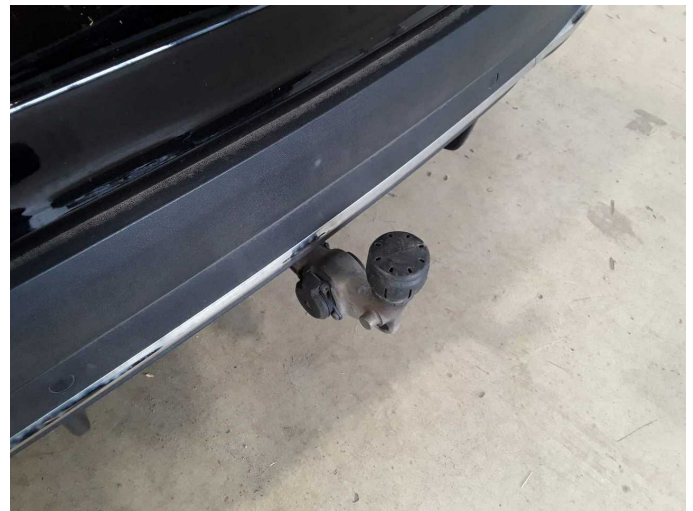
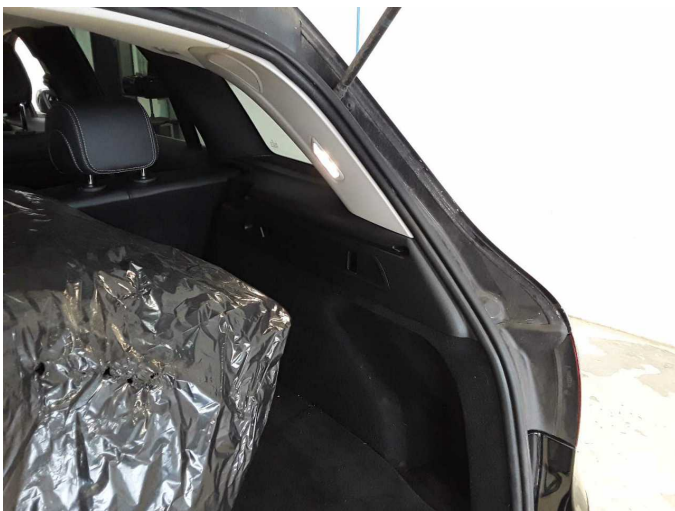


Figure 28: Misc.



Damage 1: Trim / covers: Cargo area - lining - right side (Taster Sitzentriegelung reingedrückt) - Differs from the original configuration - Un- / install



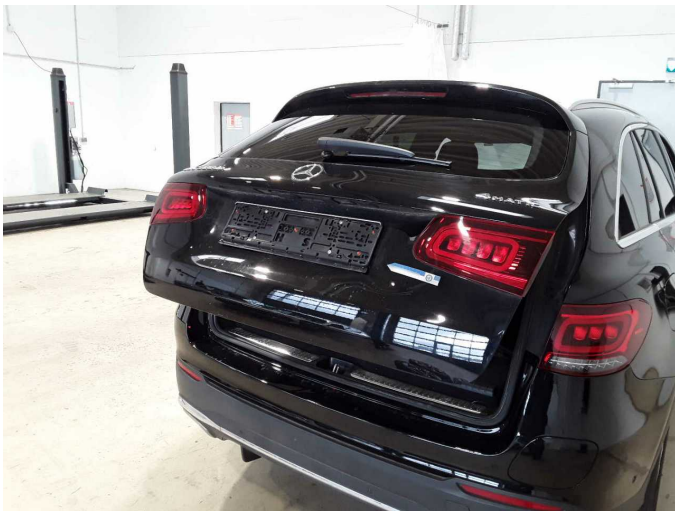
Damage 1: Trim / covers: Cargo area - lining - right side (Taster Sitzentriegelung reingedrückt) - Differs from the original configuration - Un- / install



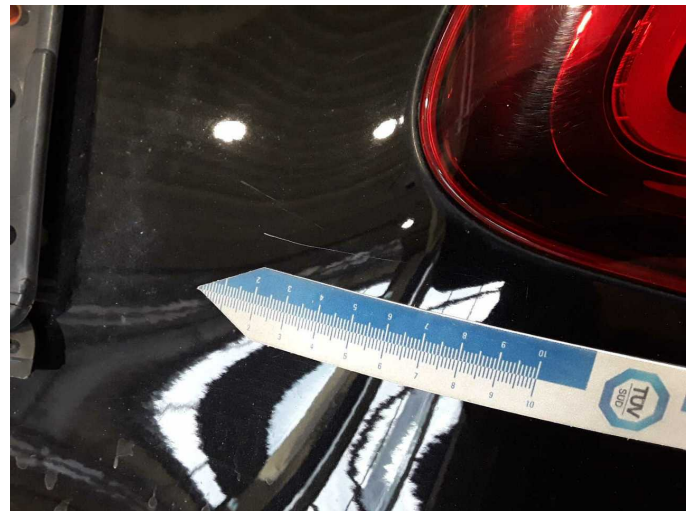
Damage 2: Steering system: Steering wheel - Worn - Smart repair



Damage 2: Steering system: Steering wheel - Worn - Smart repair



Damage 3: Boot lid / rear door: Boot lid - Scratch(es) - Smart repair



Damage 3: Boot lid / rear door: Boot lid - Scratch(es) - Smart repair



Damage 4: Front bumper: Front bumper - Scratch(es) - Paint



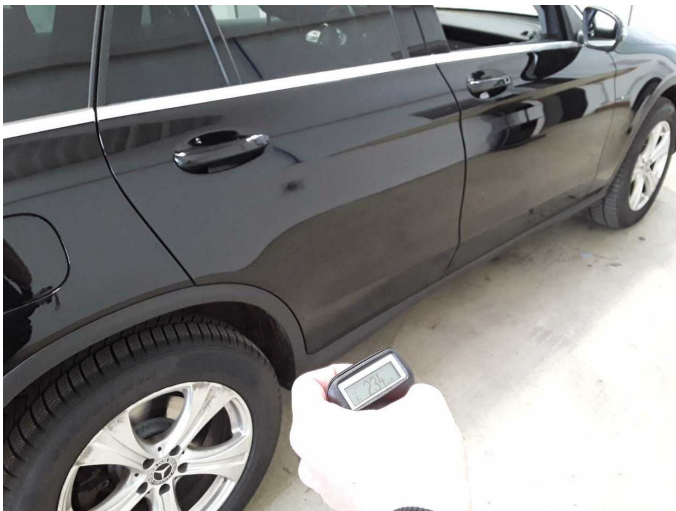
Damage 4: Front bumper: Front bumper - Scratch(es) - Paint



Damage 5: Door - front right side: Door - Scratch(es) - Paint



Damage 5: Door - front right side: Door - Scratch(es) - Paint



Repainting 1: Door - rear right side



Repainting 1: Door - rear right side