

Expertise

Protocol number: 46208580
Order No. / Reference: 26587589
Inspection date: 25 Jun 2026

Manufacturer: Ford

Model: Kuga 2.5 Duratec PHEV TITANIUM X

VIN: WF0FXXWPMHPC29044



Vehicle details

Manufacturer / Type / Model / Equipment

Ford Kuga 2.5 Duratec PHEV TITANIUM X

Vehicle Identification number WF0FXXWPMHPC29044

Mileage (Read) 138,370 km

First registration 9 May 2023

Number of holders 1

Next periodical technical inspection 05/2026

Power / Engine displacement 112 kw / 2,488 ccm

Fuel type / Cylinder Hybr.B/E ext.auf / 4

Gearbox / Number of gears Automatic / 1

Type of drive Front drive

Type of vehicle SUV

Colour / colour code Chrome Blue Metallic

Doors / Seats 5 / 5

Upholstery type Cloth / leather combination

Colour of upholstery Anthracite-Black

readiness to drive Roadworthy



Vehicle details

Maintenance booklet / proof	Available / incomplete	Next maintenance in	0 %
Key is / should be	2 / 2	FZG documents	ZB#2 (B) was available (copy), ZB#1 (S) was not available.
		Letter No.	GP515544
Previous damage / Accident	None detectable	Repainting	None detectable
Inspection conditions	sufficient	Lifting equipment / pit	No
Test drive	Not performed	Engine function test	Performed
readiness to drive	Roadworthy		
Manufacturer key number/ type code number	8566 / BTM 00020		
Emission standard	EURO6;WLTP;AP;PI/CI; M, N1 I	fine dust sticker	
Permitted total weight	2,320 kg	Empty weight	

Tyres

Mounted tyres

#	Tyre size	Type of tyre	Manufacturer	Tread depth
1)	225/65 R17 106V	All-season tyres on Light alloy	Continental	5mm / 5mm
2)	225/65 R17 106V	All-season tyres on Light alloy	Falken	5mm / 5mm

Replacement

Typ	Tyre size	Type of tyre	Manufacturer	Tread depth
N	165/70 R17 114M	Summer tyres on Steel	Maxxis	4 mm

Legend: Tread depth information for the left tire is listed first, for the right tire it is listed second on the axle in the direction of travel.

TÜV SÜD Auto Partner GmbH
Wiesenring 2
04159 Leipzig

Inspection location
Hartmann Fleet Professionals GmbH
Leerenstraße 25
29683 Bad Fallingbommel



Equipment



Standard equipment

- Acoustic Vehicle Alerting System (AVAS)
- Anti-lock braking system
- Passenger airbag deactivation
- Tires: 7 J x 17 alloy wheels (4) in 5x2-spoke design (with 225/65 R 17 tires)
- third brake light
- Roof rails, silver-colored
- 12.3-inch digital instrument panel
- Electronic Safety and Stability Program (ESP) (with hill start assist, safety brake assist, traction control and electronic brake booster)
- Electric front and rear windows with all-around closing function
- Ford EcoCoach (shows the efficiency of current driving behavior)
- Ford Power Start function & Ford Key Free system (keyless locking/unlocking)
- FordPass Connect (including eCall, Live Traffic information)
- Luggage compartment cover, roller blind, removable
- Cruise control
- Illuminated glove compartment
- Electric tailgate, sensor-controlled (opens via foot movement)
- Interior mirror, automatically dimming
- ISOFIX mounts including top tether attachment points on the outer seats of the 2nd row.
- Air conditioning with automatic temperature control (separately adjustable for driver and passenger side (2-zone automatic climate control))
- Front and rear headrests (5) height adjustable
- Charging cable for household socket
- Steering wheel: Steering wheel, 3-spoke design, in Sensico synthetic leather
- Rear center armrest with two cup holders
- Front center console with integrated armrest (2 front cup holders)
- Emergency brake light, pulsating illumination of the brake lights during hard braking
- Front and rear parking pilot system
- Upholstery: Premium Sensico upholstery in leather look/fabric (with Sensico seat bolsters in leather look)
- Post-Collision Assist
- Pre-Collision Assist (including forward alert system (FA) with pedestrian and bicycle detection - active from approx. 5 km/h to 130 km/h, pedestrian and bicycle detection up to approx. 80 km/h.)
- Tire Pressure Monitoring System (TPMS)
- Rear view camera
- Windscreen wipers with rain sensor
- Side windows from the 2nd row of seats and rear window, dark tinted.
- Seats: Passenger seat, 8-way manually adjustable (including adjustable lumbar support)
- Seats: Map pockets on the driver's and front passenger's seat backrests
- Seats: Front seats, individually and variably heated
- Ambient lighting at the front
- Electrically adjustable, heated and folding exterior mirrors (painted in body color - with integrated turn signals and ambient lighting)
- Tires: Tire repair kit (maximum speed 80 km/h when used)
- Fabric headliner
- Roof spoiler (painted in car color)
- Tachometer
- Selective driving mode switch (5 driving modes to choose from: Normal, Sport, Eco, Slippery and Unpaved Roads)
- Lane keeping assist including lane keeping assist
- Electric parking brake with auto hold function
- Ford Easy Fuel (Ford Easy Fuel comfort refueling system (Eliminates the need for a separate internal fuel cap and prevents misfueling by detecting the size difference between petrol and diesel nozzles. The filler neck only opens when the correct fuel is used.))
- Geofencing - Display of emission zones with Euro 6 and higher in the SYNC navigation device
- Luggage compartment lighting
- Transmission: continuously variable automatic transmission (CVT)
- Heated rear window
- rear window wiper
- Intelligent Protection System (IPS) (front airbag for driver and front passenger - front and rear head and shoulder airbags - side airbag for driver and front passenger - seat belt tensioners and force limiters in the front and on the outer seats of the 2nd row - 3-point seat belts in all seats, height-adjustable in the front - warning system for unfastened driver and front passenger seat belts)
- LED taillights
- Steering column, adjustable in height and reach
- Illuminated makeup mirrors in the driver's and passenger's sun visors
- MyKey key system (individually programmable second key)
- Navigation system: Ford navigation system including Ford SYNC 3 (AppLink, Android Auto, Apple CarPlay - 8" touchscreen (20.3 cm screen diagonal) - DAB/DAB+ radio reception (Digital Audio Broadcasting) - 6 speakers - Steering wheel controls - Bluetooth hands-free system and audio streaming - USB port - Voice control for audio and telephone - Acoustic and visual route guidance - Dynamic navigation with enhanced traffic information system - Lane guidance - Road map for Europe)
- Radio accessories: B&O Sound System (560 Watt premium sound system with 10 speakers, including subwoofer - based on the renowned sound and design expertise of Bang & Olufsen)
- Headlights with delayed shut-off
- Power steering (electro-mechanical, speed-dependent (EPAS - Electric Power Assisted Steering))
- Seats: Driver's seat electrically adjustable, 10-way including electrically adjustable lumbar support
- Seats: Rear bench seat, sliding, with split-folding backrest
- Seats: Front sports seats with integrated headrests
- Static LED headlights (high beam assist - LED fog lights)



- Carpet floor mats front and rear, velour
- Immobiliser

- Variable radiator air intake
- Central locking with remote control and remote luggage compartment release

Extra equipment

- Package: Driver Assistance Package (Automatic Transmission) (Intelligent Adaptive Cruise Control with Traffic Sign Recognition System - Traffic Jam Assist with Stop&Go Function and Lane Keeping Assist - Wrong-Way Driver Warning System - Evasive Steering Assist - Driver Drowsiness Detection - Pre-Collision Assist including Forward Collision Warning System with Cross Traffic Alert - Blind Spot Assist with Emergency Braking Function and Trailer Detection - Active Park Assist with Parking Assist and Semi-Autonomous Vehicle Steering - Front Camera with Split View - Door Edge Protectors - Intelligent Speed Limiter with Speed Limit Display)
- Detachable towbar (including ESP trailer stabilization)
- Package: Technology (Adaptive LED headlights with glare-free high beam assist and dynamic cornering lights, automatic headlight range control and LED fog lights - Head-up display)
- Paint finish: Special metallic paint finish
- Safety partition net for attachment behind the 2nd row of seats (including attachment points behind the first and second rows of seats)
- Tires: Spare wheel (T165/70 R17 tire - instead of tire repair kit - permissible at max. 80 km/h when used)

Brief expert findings

Documents submitted	At the time of the inspection, the vehicle registration certificate Part 2 (title) was available, but the vehicle registration certificate Part 1 (document) was not. (Copy)
VIN comparison	The vehicle identification number (VIN) was read from the vehicle and its conformity with the submitted documents was confirmed by the undersigned during the inspection.
Inspection	The inspection conditions were sufficient for the assessment of the vehicle. No lifting equipment or pit was available for inspecting the vehicle. Therefore, inspection of the vehicle's underside was only possible to a limited extent.
Test drive	No test drive/shunting maneuver was carried out during the inspection of the vehicle.
Engine function test	An engine test run was performed.
readiness to drive	The vehicle was roadworthy at the time of inspection.

Value reducing factors

No.	Component group	Description
1	Misc.	Main inspection - No evidence - No deduction
2	Misc.	Inspection / maintenance - No evidence - No deduction
3	Wing mirror - right side	Cap - Scratch(es) - Smart repair
4	Bonnet	Bonnet - dent(s) - Smooth repair work
5	Seat - front	Seat cover - left side - Broken / torn - Replace
6	Door - rear left side	Door - Scratch(es) - Paint

Wear and tear

No.	Component group	Description
1	Vehicle glazing	Windscreen - Stone chips - No deduction
2	Front bumper	Front bumper - Stone chips - No deduction
3	Boot lid / rear door	Boot lid - dent(s) - No deduction
4	Rear bumper	Rear bumper - Scratch(es) - No deduction
5	Door - front right side	Door edge - Scratch(es) - Cover / polish
6	Sill - left side	Sill - dent(s) - Smooth repair work

The vehicle shows signs of wear and tear commensurate with its age and use.



Order/Scope of Order

An order was placed to prepare a sales report for the described vehicle. This report includes the following:

- Description of key vehicle information
- Documentation of equipment features
(Delivery by third-party service providers)
- Documentation of damage, defects, missing parts
- Documentation of prior damage, unrepaired prior damage, repainting
- A brief visual or functional inspection of the equipment details, if possible.
(Functional testing of driver assistance systems is not included in the scope of services!)
- a photographic documentation of the vehicle

Basis for the order

This product is based on the guidelines for vehicle returns and valuations published by Alphabet Fleet GmbH. The expert makes the specific findings in each individual case objectively, within the framework of the prescribed standards, based on their own expertise.

The vehicle inspection takes place in a fully assembled, unassembled state.

Damage or defects that can only be detected during disassembly/diagnostic work or through further investigation remain within the realm of prognostic risk. An increased risk exists due to concealed defects caused by fraudulent misrepresentation and which were not identifiable by the expert.

Damage or defects resulting from normal use or wear and tear of the vehicle will be accepted in accordance with the applicable standard.

There was no explicit identification or monetary consideration of the expected features within the product.

Features which, in their nature and extent, slightly exceed normal use but do not constitute unacceptable damage, will be documented and indicated as signs of wear, if applicable.

Damage or defects that, according to the applicable standard, can no longer be attributed to normal use or wear and tear are listed under "Value Reducing Factors" in the product description.

Depending on the product specification, a monetary ID can be provided. If this takes place, the costs can be 100% or pro rata depending on the vehicle's age and mileage.

Previous damages

No apparent prior damage that had been repaired could be found on the vehicle.



Figure 1: Diagonal front (left)



Figure 2: Diagonal front (right)



Figure 3: Diagonal rear (left)



Figure 4: Diagonal rear (right)



Figure 5: Interior - front



Figure 6: Interior - rear



Figure 7: Instrument cluster



Figure 8: Instrument panel



Figure 9: Interior 360° view



Figure 10: Cargo area



Figure 11: VIN



Figure 12: Mounted tyres

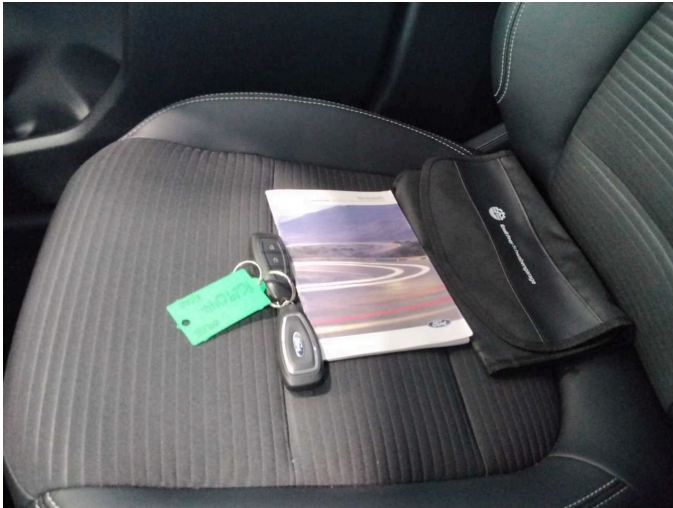


Figure 13: Documents

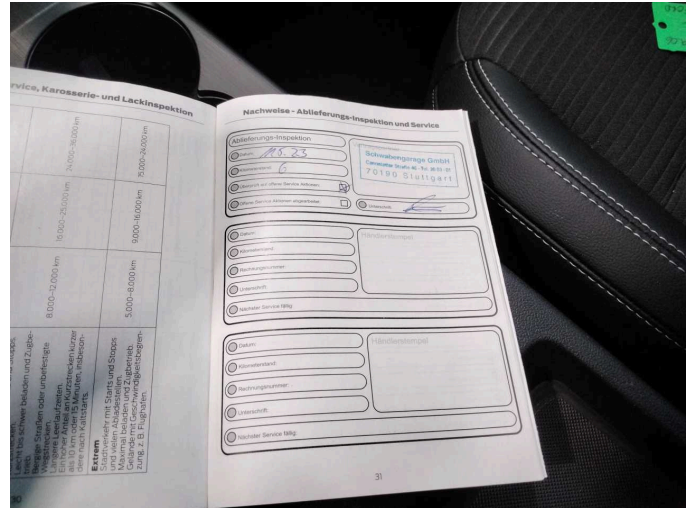


Figure 14: Documents

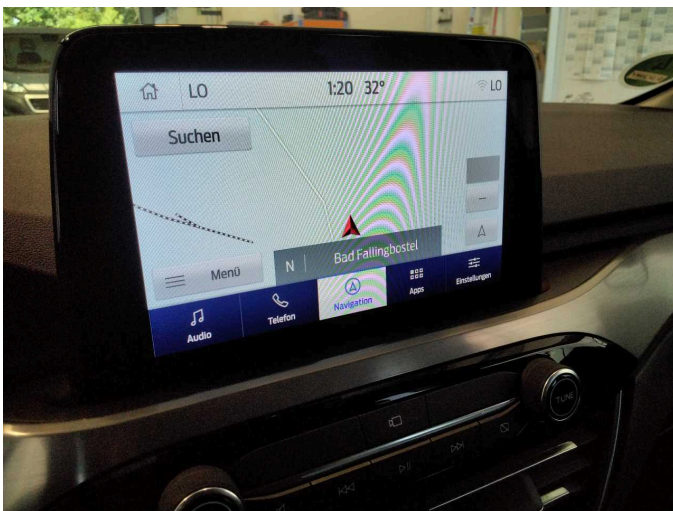


Figure 15: Navigation



Figure 16: Misc.



Figure 17: Misc.

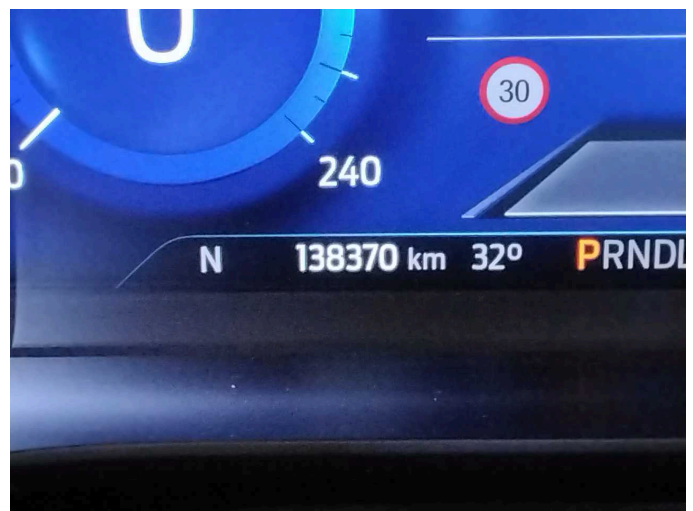


Figure 18: Misc.



Figure 19: Misc.



Figure 20: Misc.



Figure 21: Misc.

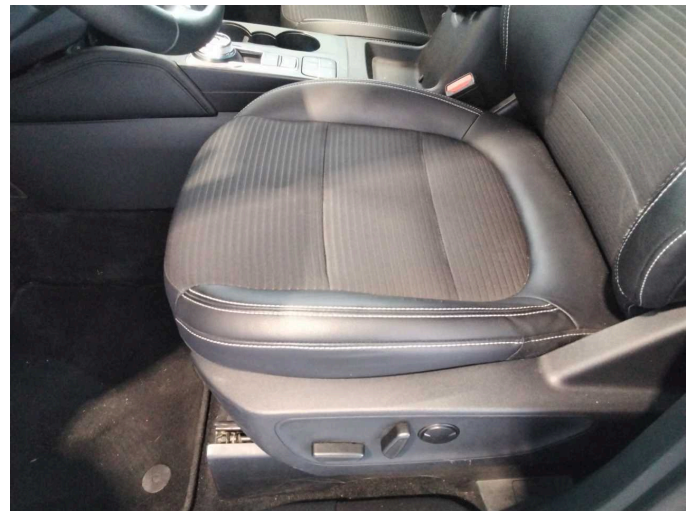


Figure 22: Misc.

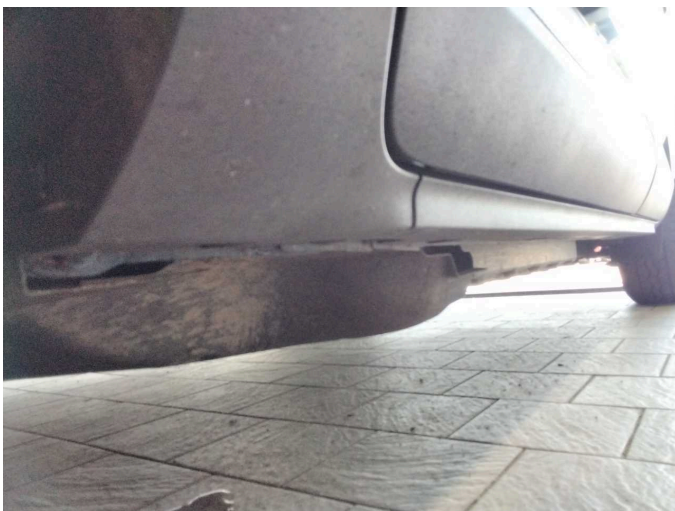


Figure 23: Misc.



Figure 24: Misc.

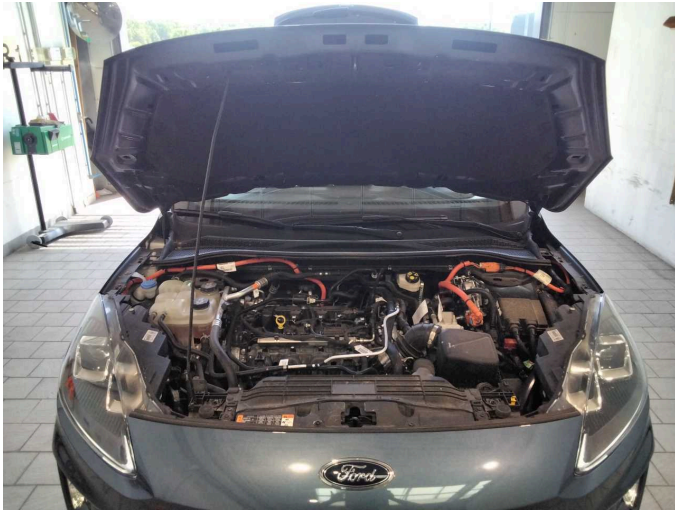


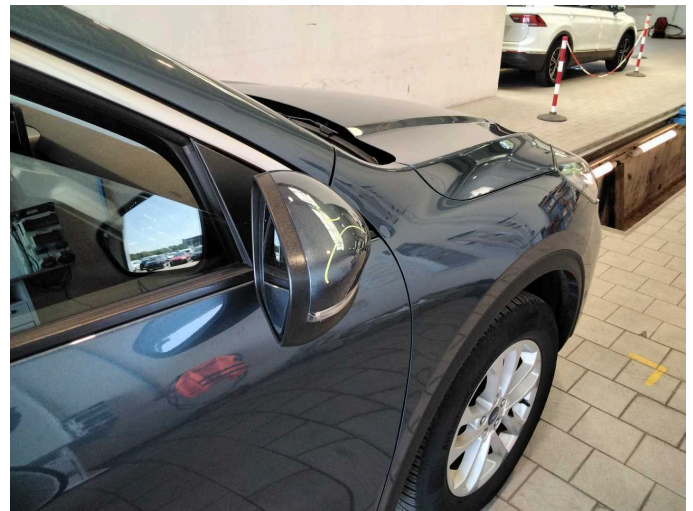
Figure 25: Misc.



Figure 26: Misc.



Figure 27: Misc.



Damage 3: Wing mirror - right side: Cap - Scratch(es) - Smart repair



Damage 3: Wing mirror - right side: Cap - Scratch(es) - Smart repair



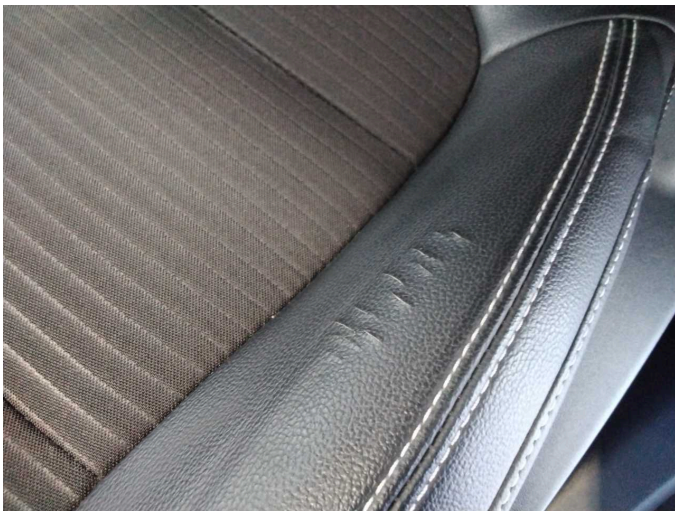
Damage 4: Bonnet: Bonnet - dent(s) - Smooth repair work



Damage 4: Bonnet: Bonnet - dent(s) - Smooth repair work



Damage 5: Seat - front: Seat cover - left side - Broken / torn - Replace



Damage 5: Seat - front: Seat cover - left side - Broken / torn - Replace



Damage 6: Door - rear left side: Door - Scratch(es) - Paint



Damage 6: Door - rear left side: Door - Scratch(es) - Paint



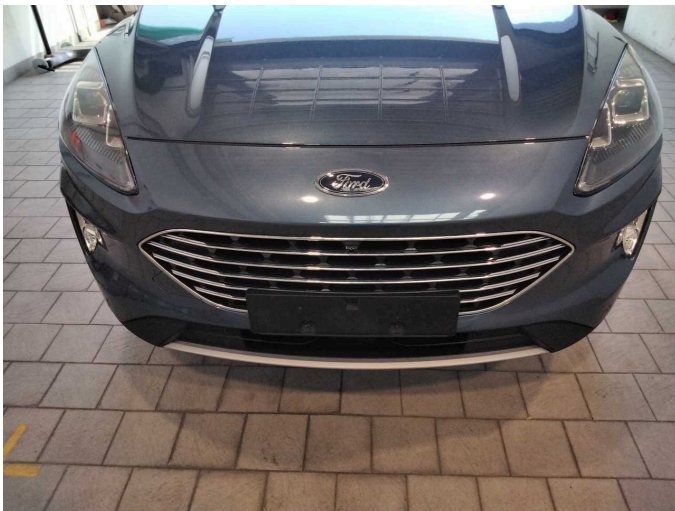
Damage 6: Door - rear left side: Door - Scratch(es) - Paint



Damage 6: Door - rear left side: Door - Scratch(es) - Paint



Wear and tear 1: Vehicle glazing: Windscreen - Stone chips - No deduction



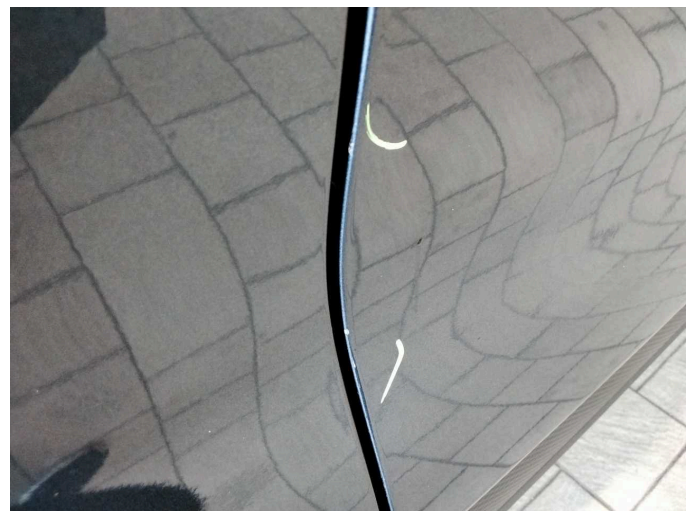
Wear and tear 2: Front bumper: Front bumper - Stone chips - No deduction



Wear and tear 4: Rear bumper: Rear bumper - Scratch(es) - No deduction



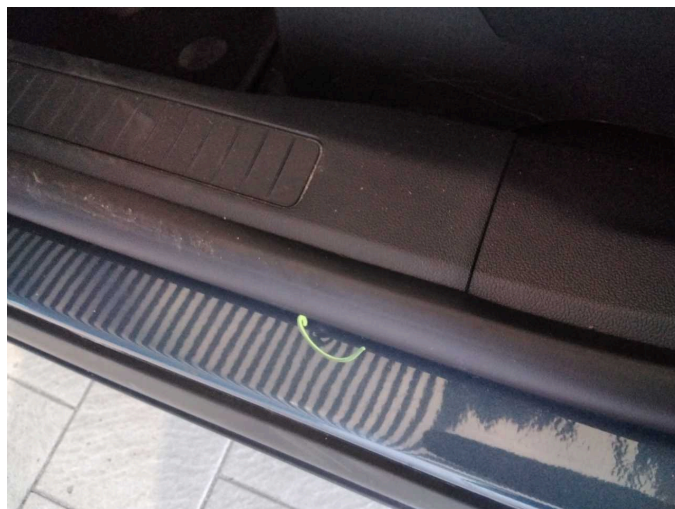
Wear and tear 5: Door - front right side: Door edge - Scratch(es) - Cover / polish



Wear and tear 5: Door - front right side: Door edge - Scratch(es) - Cover / polish



Wear and tear 6: Sill - left side: Sill - dent(s) - Smooth repair work



Wear and tear 6: Sill - left side: Sill - dent(s) - Smooth repair work