

Expertise

Protocol number: 46335139
Order No. / Reference: 26605170
Inspection date: 6 Jul 2026

Manufacturer: Skoda

Model: Kodiaq 2.0 TDI 4x4 DSG Sportline

VIN: TMBLN7NS6N8013216



Vehicle details

Manufacturer / Type / Model / Equipment

Skoda Kodiaq 2.0 TDI 4x4 DSG Sportline

Vehicle Identification number TMBLN7NS6N8013216

Mileage (Read) 87,372 km

First registration 8 Nov 2021

Number of holders 1

Power / Engine displacement 147 kw / 1,968 ccm

Fuel type / Cylinder Diesel / 4

Gearbox / Number of gears Automatic / 7

Type of drive All-wheel drive

Type of vehicle SUV

Colour / colour code Black-Magic Perleffekt

Doors / Seats 5 / 5

Upholstery type Cloth

Colour of upholstery Black-Anthracite



Vehicle details

Maintenance booklet / proof	Non-existent	Next maintenance in	3,200 km
Last service on / at	04/2025 at 60,558 km		
Key is / should be	3 / 3	FZG documents	ZB#2 (B) was available (copy), ZB#1 (S) was not available.
		Letter No.	GD086467
Previous damage / Accident	None detectable	Repainting	None detectable
Inspection conditions	sufficient	Lifting equipment / pit	yes
Test drive	Not performed	Engine function test	Performed
Manufacturer key number/ type code number	8004 / AVW 00363		
Emission standard	EURO6;WLTP;AP;PI/CI; M, N1 I	fine dust sticker	
Permitted total weight	2,410 kg	Empty weight	

Tyres

Mounted tyres

#	Tyre size	Type of tyre	Manufacturer	Tread depth
1)	235/55 R18 104H	Winter tyres on Light alloy	Pirelli	5mm / 5mm
2)	235/55 R18 104H	Winter tyres on Light alloy	Pirelli	5mm / 5mm

Additional tyres

#	Tyre size	Type of tyre	Manufacturer	Tread depth
1)	235/50 R19 99V	Summer tyres on Light alloy	Pirelli	5mm / 5mm
2)	235/50 R19 99V	Summer tyres on Light alloy	Pirelli	5mm / 5mm

Legend: Tread depth information for the left tire is listed first, for the right tire it is listed second on the axle in the direction of travel.



Equipment

Standard equipment

- 12V socket in the center console and in the trunk
- Storage compartments behind the wheel arches in the trunk
- Airbag, driver's knee airbag
- Airbag, front side airbags
- Permanent all-wheel drive
- Traction control (ASR)
- Electrically folding exterior mirrors including interior and driver's side mirrors with automatic dimming
- Hill start assist
- Hydraulic brake assist (HBA)
- Black headliner
- Dark Carbon decorative inlay
- Tachometer
- Easy Start (start-stop button)
- Electronic parking brake including auto-hold function
- ESC Electronic Stability Control
- Driving profile selection
- Electric windows front and rear
- High Beam Assist (Light Assist)
- front and rear floor mats
- Closed storage compartment on the driver's side
- Transmission: 7-speed dual-clutch transmission (DSG)
- Illuminated glove compartment
- Boot cover, roll-up and removable
- Front headrests are fixed, rear headrests are height-adjustable.
- LED matrix headlights and dynamic high beam assist (Light Assist)
- Steering wheel: Sport leather steering wheel with multifunction buttons including paddle shifters.
- Front center armrest, including storage compartment
- Engine drag torque control (MSR)
- Multi-collision brake
- Rear parking sensors
- Upholstery: Microfiber Sport-Black
- Radio: Bolero infotainment system
- Radio accessories: Digital radio reception DAB+
- Radio accessories: Wireless SmartLink
- Wheels: 19" alloy wheels Triglav anthracite polished
- Rear seat backrest split 60:40, foldable, longitudinally adjustable, backrest angle adjustable
- Electromechanical power steering
- Seats: Heated front and outer rear seats
- Seats: Electrically adjustable front seats with memory function
- Skoda Care Connect
- Sun visor on driver and passenger side with illuminated vanity mirror
- Telephone: Convenient hands-free telephone system including phone box
- Lashing eyes in the trunk
- Central locking with remote control
- Storage compartment on the left wheel arch
- front aero windshield wipers
- Airbag, driver and passenger
- Airbag, head airbags
- Allergen filter
- Anti-lock braking system (ABS)
- Dashboard in black / black, door trim in black with microfiber inlay
- Electrically adjustable and heated exterior mirrors with integrated side indicators
- Care Connect: Proactive services (10-year term)
- Roof rails, black
- Diesel particulate filter
- Third brake light
- eCall
- Electronic transverse differential lock (XDS+)
- Driving light assistant and rain sensor
- Chassis: Adaptive chassis DCC including driving profile selection
- Front radar assistant including city emergency braking function with pedestrian detection
- Cruise control
- Tinted windows
- Isofix anchorage on the outer rear seats including top tether
- Paint finish: Special paint finish, solid color
- LED ambient lighting
- LED taillights in crystal glass look & LED license plate lights
- Reading lights at the front of the headliner
- Rear center armrest with cup holders and pass-through option
- Multifunction display in the instrument cluster, color
- Fog lights with integrated LED daytime running lights
- Stainless steel pedal design
- Progressive steering
- Radio accessories: 8 speakers
- Radio accessories: SmartLink
- Tire pressure monitoring
- Wheels: RunFlat tires with Seal technology
- Heated windshield washer nozzles, front
- Headlights washer / wiper system
- Kodiaq seat belts
- Seats: Adjustable lumbar support in the front seats
- Seats: Height-adjustable front seats
- Seats: Remote release of the rear seat backrests (2nd row) in the boot
- Speed limiter
- Sunset
- Front door sill trims
- Variable fastening concept in the trunk
- Immobiliser



Extra equipment

- Swiveling trailer hitch (with electric release, including trailer stabilization)
- Anti-theft alarm system with SAFE system incl. Kessy & Easy Start (interior monitoring and tilt sensor incl. Kessy & Easy Start)
- Third vehicle key
- Climatronic air conditioning (3-zone) (fully automatic, separately adjustable for driver, front passenger and rear seats)
- Package: Family (Removable waste bin for the door panel - Sunshades for the rear side windows - Door edge protectors)
- 360° surround view camera (area view) including reversing camera
- Variable loading floor in the trunk
- Traveller Plus (DSG) assistance system (Adaptive Cruise Control ACC (control range up to 210 km/h) - Lane Assist, Blind Spot Detection and Parking Assist, Exit Warning - Adaptive Lane Guidance - Park Assist - Traffic Jam and Emergency Assist - Traffic Sign Recognition)
- ISOFIX preparation on the front passenger seat
- Paint finish: Metallic / Pearl effect
- Package: Business Columbus (Sportline, RS) (Dynamic radio-navigation system Columbus - 9.2" capacitive color display - Digital instrument cluster (Virtual Cockpit) - Driver fatigue detection - 230V socket and USB charging port (Type-C) on the back of the front center armrest - Acoustic glazing in the front doors - KESSY keyless entry - Electric tailgate operation including comfort opening - Luggage net partition - Infotainment Online (3-year subscription))

Brief expert findings

Documents submitted	At the time of the inspection, the vehicle registration certificate Part 2 (title) was available, but the vehicle registration certificate Part 1 (document) was not. (Copy)
VIN comparison	The vehicle identification number (VIN) was read from the vehicle and its conformity with the submitted documents was confirmed by the undersigned during the inspection.
Inspection	The inspection conditions were sufficient for the assessment of the vehicle. Lifting equipment and/or a pit were available for examining the vehicle.
Test drive	No test drive/shunting maneuver was carried out during the inspection of the vehicle.
Engine function test	An engine test run was performed.

Value reducing factors

No.	Component group	Description
1	Boot lid / rear door	Seal - Damaged - Replace
2	Front bumper	Front bumper - Scratch(es) - Smart repair
3	Interior	Interior (Hundegeruch) - Odour - Ozone treatment
4	Mudguard - right side	Mudguard - right side - Scratch(es) - Smart repair
5	Interior	Boot cover / roller cover - Damaged - Replace
6	Rear bumper	Rear bumper - Scratch(es) - Paint
7	Side panel - rear left side	Side panel - Dent / paintcoat damage - Repair and paint
8	Side panel - rear right side	Side panel - Dent / paintcoat damage - Repair and paint
9	Door - rear right side	Door - Dent / paintcoat damage - Repair and paint
10	Bonnet	Bonnet - Scratched - Paint
11	Boot lid / rear door	Boot lid - Deformed - Repair and paint
12	Vehicle glazing	Windscreen (Rissbildung) - Stone chips - repair according to calculation

Wear and tear

No.	Component group	Description
1	Mudguard - right side	Wheel arch - Scratch(es) - No deduction
2	Door - front right side	Door - Scratch(es) - No deduction

The vehicle shows signs of wear and tear commensurate with its age and use.



Order/Scope of Order

An order was placed to prepare a sales report for the described vehicle. This report includes the following:

- Description of key vehicle information
- Documentation of equipment features
(Delivery by third-party service providers)
- Documentation of damage, defects, missing parts
- Documentation of prior damage, unrepaired prior damage, repainting
- A brief visual or functional inspection of the equipment details, if possible.
(Functional testing of driver assistance systems is not included in the scope of services!)
- a photographic documentation of the vehicle

Basis for the order

This product is based on the guidelines for vehicle returns and valuations published by Alphabet Fleet GmbH. The expert makes the specific findings in each individual case objectively, within the framework of the prescribed standards, based on their own expertise.

The vehicle inspection takes place in a fully assembled, unassembled state.

Damage or defects that can only be detected during disassembly/diagnostic work or through further investigation remain within the realm of prognostic risk. An increased risk exists due to concealed defects caused by fraudulent misrepresentation and which were not identifiable by the expert.

Damage or defects resulting from normal use or wear and tear of the vehicle will be accepted in accordance with the applicable standard.

There was no explicit identification or monetary consideration of the expected features within the product.

Features which, in their nature and extent, slightly exceed normal use but do not constitute unacceptable damage, will be documented and indicated as signs of wear, if applicable.

Damage or defects that, according to the applicable standard, can no longer be attributed to normal use or wear and tear are listed under "Value Reducing Factors" in the product description.

Depending on the product specification, a monetary ID can be provided. If this takes place, the costs can be 100% or pro rata depending on the vehicle's age and mileage.

Previous damages

No apparent prior damage that had been repaired could be found on the vehicle.

Comments

Wartungshistorie gemäß Auftraggeber Informationen.



Figure 1: Diagonal front (left)



Figure 2: Diagonal front (right)



Figure 3: Diagonal rear (left)



Figure 4: Diagonal rear (right)

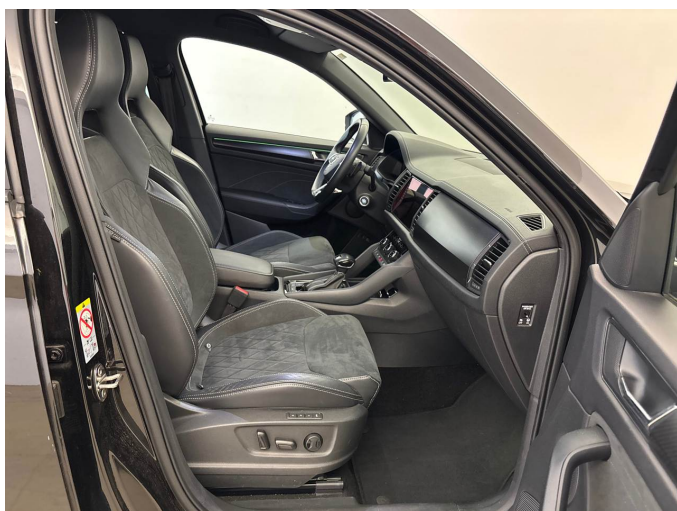


Figure 5: Interior - front

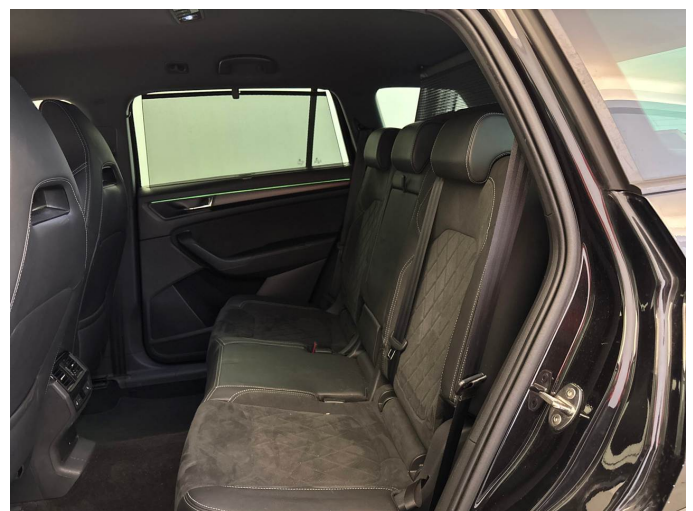


Figure 6: Interior - rear



Figure 7: Instrument cluster



Figure 8: Instrument panel



Figure 9: Interior 360° view



Figure 10: Cargo area



Figure 11: VIN



Figure 12: Mounted tyres



Figure 13: Documents



Figure 14: Additional tyres



Figure 15: Navigation



Figure 16: Misc.



Figure 17: Misc.



Figure 18: Misc.



Figure 19: Misc.



Figure 20: Misc.



Figure 21: Misc.



Figure 22: Misc.



Figure 23: Misc.



Figure 24: Misc.



Figure 25: Misc.



Figure 26: Misc.



Figure 27: Misc.

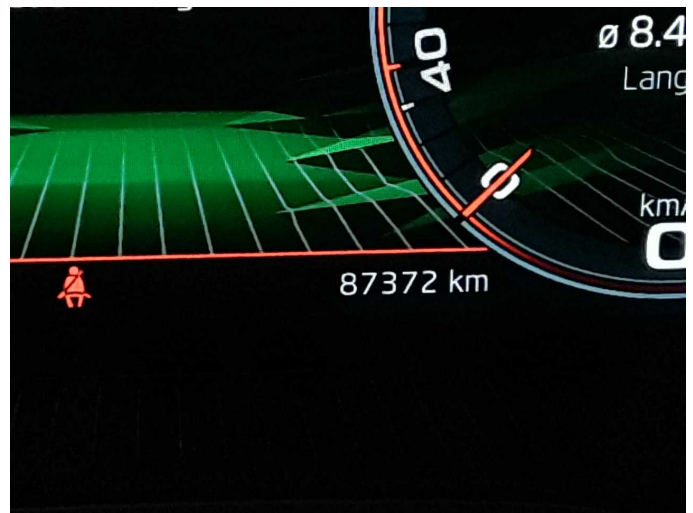


Figure 28: Misc.



Figure 29: Misc.

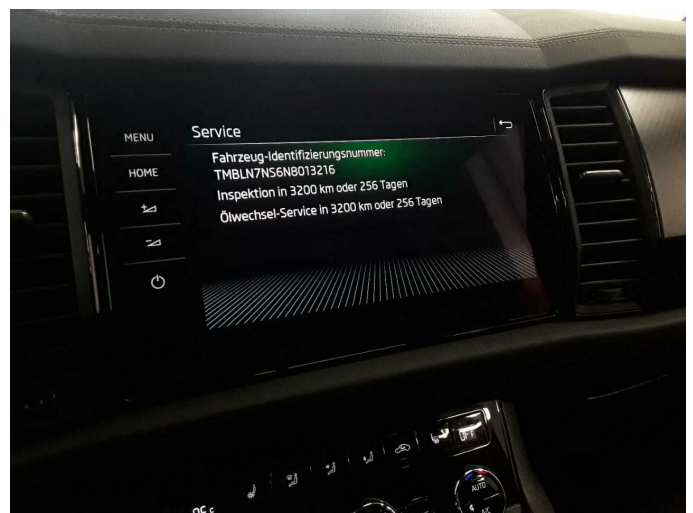


Figure 30: Misc.



Damage 1: Boot lid / rear door: Seal - Damaged - Replace



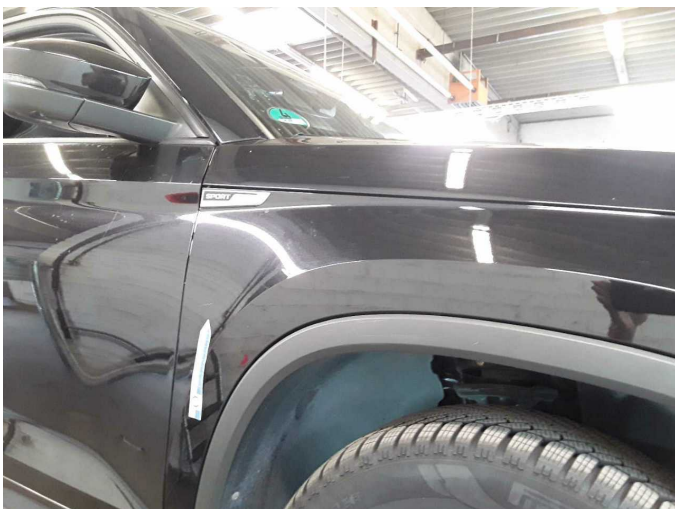
Damage 1: Boot lid / rear door: Seal - Damaged - Replace



Damage 2: Front bumper: Front bumper - Scratch(es) - Smart repair



Damage 2: Front bumper: Front bumper - Scratch(es) - Smart repair



Damage 4: Mudguard - right side: Mudguard - right side - Scratch(es) - Smart repair



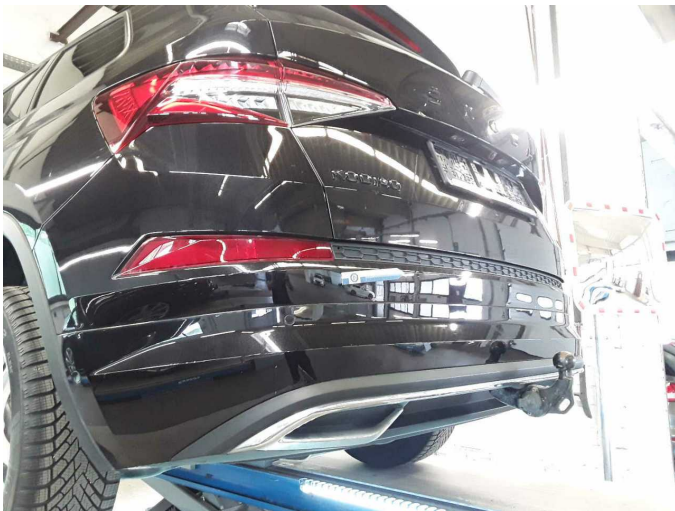
Damage 4: Mudguard - right side: Mudguard - right side - Scratch(es) - Smart repair



Damage 5: Interior: Boot cover / roller cover - Damaged - Replace



Damage 5: Interior: Boot cover / roller cover - Damaged - Replace



Damage 6: Rear bumper: Rear bumper - Scratch(es) - Paint



Damage 6: Rear bumper: Rear bumper - Scratch(es) - Paint



Damage 6: Rear bumper: Rear bumper - Scratch(es) - Paint



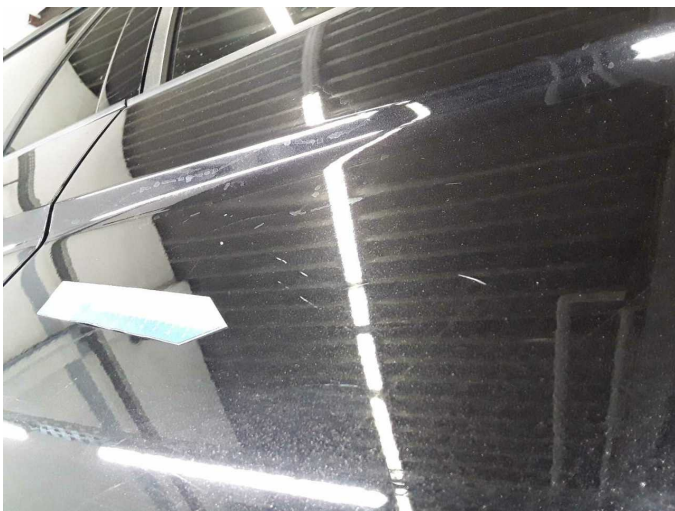
Damage 6: Rear bumper: Rear bumper - Scratch(es) - Paint



Damage 7: Side panel - rear left side: Side panel - Dent / paintcoat damage - Repair and paint



Damage 7: Side panel - rear left side: Side panel - Dent / paintcoat damage - Repair and paint



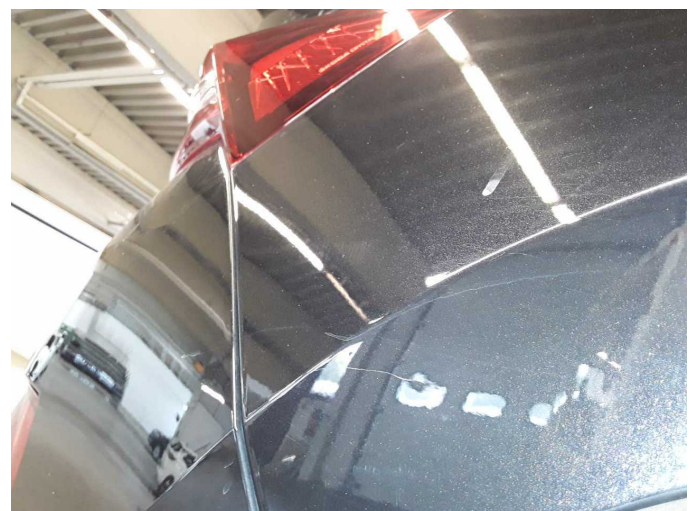
Damage 7: Side panel - rear left side: Side panel - Dent / paintcoat damage - Repair and paint



Damage 8: Side panel - rear right side: Side panel - Dent / paintcoat damage - Repair and paint



Damage 8: Side panel - rear right side: Side panel - Dent / paintcoat damage - Repair and paint



Damage 8: Side panel - rear right side: Side panel - Dent / paintcoat damage - Repair and paint



Damage 9: Door - rear right side: Door - Dent / paintcoat damage - Repair and paint



Damage 9: Door - rear right side: Door - Dent / paintcoat damage - Repair and paint



Damage 9: Door - rear right side: Door - Dent / paintcoat damage - Repair and paint



Damage 9: Door - rear right side: Door - Dent / paintcoat damage - Repair and paint



Damage 10: Bonnet: Bonnet - Scratched - Paint



Damage 10: Bonnet: Bonnet - Scratched - Paint



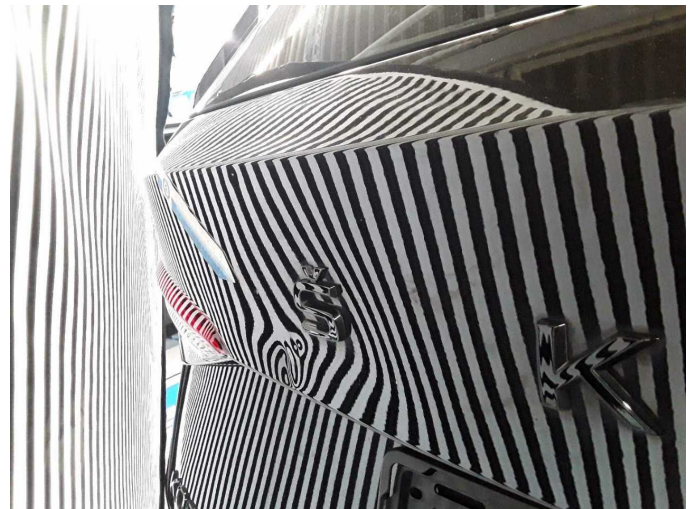
Damage 10: Bonnet: Bonnet - Scratched - Paint



Damage 11: Boot lid / rear door: Boot lid - Deformed - Repair and paint



Damage 11: Boot lid / rear door: Boot lid - Deformed - Repair and paint



Damage 11: Boot lid / rear door: Boot lid - Deformed - Repair and paint



Damage 12: Vehicle glazing: Windscreen (Rissbildung) - Stone chips - repair according to calculation



Damage 12: Vehicle glazing: Windscreen (Rissbildung) - Stone chips - repair according to calculation



Wartungshistorie

(gemäß Auftraggeber Informationen)

Fahrgestellnummer: TMBLN7NS6N8013216
Hersteller / Modell: SKODA SKODA Kodiaq 2.0 TDI 4x4 DSG Sportline

Datum	KM-Stand	Beschreibung
12.05.2025	64.320	Systemtest/Eigendiagnose
03.04.2025	60.558	Bremsflüssigkeit; Bremsflüssigkeit ern; Getriebeöl ern/prüfen; Motoröl b. Wartung; Ölfilter ern; Ölwechsel - Hinterachse; Regelwartungsdienst; Reparatur Sonstiges; Wartung Sonstiges
15.11.2024	53.807	Bremse Sonstiges; Bremsklötze hinten; Bremsklötze vorne; Brems Scheiben hinten; Brems Scheiben vorne
06.11.2024	0	AU
19.07.2023	29.622	Motoröl b. Wartung; Ölfilter ern; Regelwartungsdienst; Wartung Sonstiges