

Expertise

Protocol number: 46262401
Order No. / Reference: 26528535
Inspection date: 29 Jun 2026

Manufacturer: Ford

Model: S-Max 2.0 EcoBlue Aut. TITANIUM

VIN: WF0JXXWPCJNM13585



Vehicle details

Manufacturer / Type / Model / Equipment

Ford S-Max 2.0 EcoBlue Aut. TITANIUM

Vehicle Identification number WF0JXXWPCJNM13585

Mileage (Read) 170,935 km

First registration 12 Oct 2022

Number of holders 1

Next periodical technical inspection 11/2027
(Report not on hand)

Power / Engine displacement 140 kw / 1,995 ccm

Fuel type / Cylinder Diesel / 4

Gearbox / Number of gears Automatic / 8

Type of drive Front drive

Type of vehicle Station wagon

Colour / colour code Frost Weiß

Doors / Seats 5 / 5

Upholstery type Cloth

Colour of upholstery Black-Anthracite

Re-import no

readiness to drive Roadworthy



Vehicle details

Maintenance booklet / proof	digital proof / complete	Next maintenance in	
Last service on / at	04/2026 at 169,131 km		
Key is / should be	2 / 2	FZG documents	ZB#2 (B) was available (copy), ZB#1 (S) was not available.
		Letter No.	GP440623
Previous damage / Accident	None detectable	Repainting	None detectable
Inspection conditions	sufficient	Lifting equipment / pit	yes
Test drive	Not performed	Engine function test	Performed
readiness to drive	Roadworthy		
Manufacturer key number/ type code number	8566 / BQR 00355		
Emission standard	EURO6;WLTP;AP;PI/CI; M, N1 I	fine dust sticker	
Permitted total weight	2,555 kg	Empty weight	

Tyres

Mounted tyres

#	Tyre size	Type of tyre	Manufacturer	Tread depth
1)	235/55 R17 103V	Winter tyres on Light alloy	Pirelli	5mm / 5mm
2)	235/55 R17 103V	Winter tyres on Light alloy	Pirelli	6mm / 6mm

Additional tyres

#	Tyre size	Type of tyre	Manufacturer	Tread depth
1)	235/55 R17 103Y	Summer tyres on Light alloy	Pirelli	4mm / 4mm
2)	235/55 R17 103Y	Summer tyres on Light alloy	Pirelli	4mm / 4mm

Replacement

Typ	Tyre size	Type of tyre	Manufacturer	Tread depth
Tirefit		Expiration date 08/2026		

Legend: Tread depth information for the left tire is listed first, for the right tire it is listed second on the axle in the direction of travel.



Equipment

Standard equipment

- Storage compartments
- Anti-lock braking system (ABS)
- Attachment points for safety partition grilles
- Tires: 7.5 J x 17 alloy wheels (4) with 235/55 R 17 tires
- third brake light
- Roof rails "aluminum look"
- Tachometer
- Driver information system display 25.4 cm color
- Electric windows front and rear
- High Beam Assist
- Ford Easy Fuel
- Ford Power Start function
- Ford Power start function with Ford Key Free system
- Luggage compartment lighting
- Transmission: 8-speed automatic transmission
- rear window wiper
- Interior mirror, automatically dimming
- Isofix bracket
- Air conditioning with automatic temperature control
- Steering wheel: Multifunction leather steering wheel
- Reading lights front and rear
- MyKey key system (individually programmable second key)
- Fog light
- Emergency brake light
- Front and rear parking pilot system
- Tire repair kit
- LED taillights
- Headlight dipped beam with switch-off delay including "greeting function"
- Seats: Driver and passenger seats, 4-way manually adjustable
- Seats: Front seats can be heated individually and variably.
- 230 volt socket
- Bumpers painted in body color
- Trays on the front seatbacks
- Premium carpet floor mats, front and rear
- Lashing eyes in the luggage compartment
- Immobiliser
- Central locking with remote control
- Ambient lighting at the front
- Exterior mirrors in body color, driver and passenger side, electrically adjustable and heated
- Hill start assist
- roof console
- Diesel particulate filter (DPF)
- Electronic Shifter
- Lane keeping assist including lane keeping assist and driver fatigue warning
- Electronic parking brake
- Ford EasyFold: 2nd row seat backrests fold down electrically at the touch of a button.
- luggage compartment cover
- Cruise control system with intelligent speed limiter
- Back window, heater
- Interior lighting with delay circuit
- Intelligent security system
- Electric child safety lock
- Steering wheel: Steering column, adjustable in height and reach
- Front center console with padded armrest
- Ford navigation system including Ford SYNC 3 with AppLink, touchscreen, DAB/DAB+ and FordPass Connect
- Package: Winter
- Upholstery: Cloth
- Tire Pressure Monitoring System (TMPS)
- Windscreen wipers with rain sensor
- Headlight assistant with day/night sensor
- Electromechanical power steering
- Seats: Flexible seating system "FoldFlatSystem (FFS)"
- Seats: Front sports seats
- Start-stop system
- Power outlet: 12-volt connection in the luggage compartment and in the center console
- LED daytime running lights
- Traffic sign recognition system
- Warning system for unfastened seat belts for the 1st and 2nd rows of seats
- Cigarette lighter



Extra equipment

- Detachable towbar (including ESP trailer stabilization)
- Paint finish: Frost White
- Protective film for rear bumper
- Side windows from the 2nd row of seats and rear window, dark tinted.
- Safety partition grille, mounting behind front seats
- Seats: Ford ergonomic seat (driver's seat 18-way adjustable: - length, height and tilt of the seat - extendable thigh support - adjustable backrest - lumbar support 4-way electrically adjustable - passenger seat, 4-way manually adjustable, incl. manually adjustable lumbar support)
- Vehicle lettering Dräger
- Package: Business II (Ford navigation system incl. Ford SYNC 3, AppLink, 20.3 cm touchscreen, DAB/DAB+, voice control, Android Auto and Apple CarPlay, Bluetooth hands-free system and audio streaming, FordPass Connect, eCall emergency call system, radio/ CD player, 2 USB ports, 8 speakers, steering wheel remote control, adaptive LED headlights, cornering lights, automatic headlight range control, automatic headlights, day/night sensor, high beam assist, LED daytime running lights, anti-theft alarm system, reversing camera)

Brief expert findings

Documents submitted	At the time of the inspection, the vehicle registration certificate Part 2 (title) was available, but the vehicle registration certificate Part 1 (document) was not. (Copy)
VIN comparison	The vehicle identification number (VIN) was read from the vehicle and its conformity with the submitted documents was confirmed by the undersigned during the inspection.
Inspection	The inspection conditions were sufficient for the assessment of the vehicle. Lifting equipment and/or a pit were available for examining the vehicle.
Test drive	No test drive/shunting maneuver was carried out during the inspection of the vehicle.
Engine function test	An engine test run was performed.
readiness to drive	The vehicle was roadworthy at the time of inspection.

Value reducing factors

No.	Component group	Description
1	Tail light	License plate lamp - left side - Non-operational - Replace
2	Indicator - front	Mirror - left side - Broken / torn - Replace
3	Engine	Engine (Tröpfchenbildund, Umweltbelastung) - Leaking - Perform diagnosis
4	Engine	Engine cover - Damage caused by marten / rodent - Replace
5	Trim / covers	Door trim - front right side - Broken / torn - Smart repair
6	Mudguard - right side	Mudguard - right side - Stone chips - Repair and paint
7	Mudguard - left side	Mudguard - left side - Stone chips - Repair and paint
8	Bonnet	Bonnet (Sandstrahleffekt) - Stone chips - Repair and paint
9	Front bumper	Front bumper (+ Spoiler) - Stone chips - Repair and paint
10	Vehicle glazing	Windscreen - Stone chips - Replace

Wear and tear

No.	Component group	Description
1	Misc.	Main inspection - No evidence - No deduction

The vehicle shows signs of wear and tear commensurate with its age and use.



Order/Scope of Order

An order was placed to prepare a sales report for the described vehicle. This report includes the following:

- Description of key vehicle information
- Documentation of equipment features
(Delivery by third-party service providers)
- Documentation of damage, defects, missing parts
- Documentation of prior damage, unrepaired prior damage, repainting
- A brief visual or functional inspection of the equipment details, if possible.
(Functional testing of driver assistance systems is not included in the scope of services!)
- a photographic documentation of the vehicle

Basis for the order

This product is based on the guidelines for vehicle returns and valuations published by Alphabet Fleet GmbH. The expert makes the specific findings in each individual case objectively, within the framework of the prescribed standards, based on their own expertise.

The vehicle inspection takes place in a fully assembled, unassembled state.

Damage or defects that can only be detected during disassembly/diagnostic work or through further investigation remain within the realm of prognostic risk. An increased risk exists due to concealed defects caused by fraudulent misrepresentation and which were not identifiable by the expert.

Damage or defects resulting from normal use or wear and tear of the vehicle will be accepted in accordance with the applicable standard.

There was no explicit identification or monetary consideration of the expected features within the product.

Features which, in their nature and extent, slightly exceed normal use but do not constitute unacceptable damage, will be documented and indicated as signs of wear, if applicable.

Damage or defects that, according to the applicable standard, can no longer be attributed to normal use or wear and tear are listed under "Value Reducing Factors" in the product description.

Depending on the product specification, a monetary ID can be provided. If this takes place, the costs can be 100% or pro rata depending on the vehicle's age and mileage.

Previous damages

No apparent prior damage that had been repaired could be found on the vehicle.

Comments

- Wartungshistorie gemäß Auftraggeber Informationen.
- Für den montierten Radsatz wurde kein Nachweis erbracht.
- Winterradsatz ist kein Bestandteil des Auslieferungsumfangs.



Figure 1: Diagonal front (left)



Figure 2: Diagonal front (right)



Figure 3: Diagonal rear (left)



Figure 4: Diagonal rear (right)



Figure 5: Interior - front



Figure 6: Interior - rear



Figure 7: Instrument cluster



Figure 8: Instrument panel

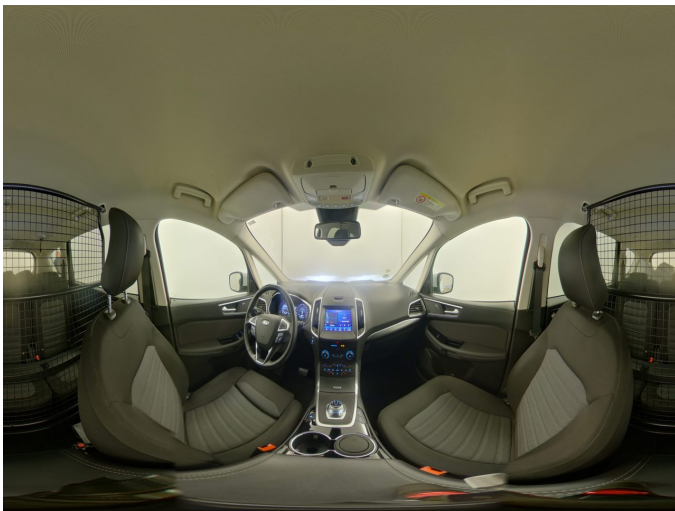


Figure 9: Interior 360° view



Figure 10: Cargo area



Figure 11: VIN



Figure 12: Mounted tyres



Figure 13: Documents

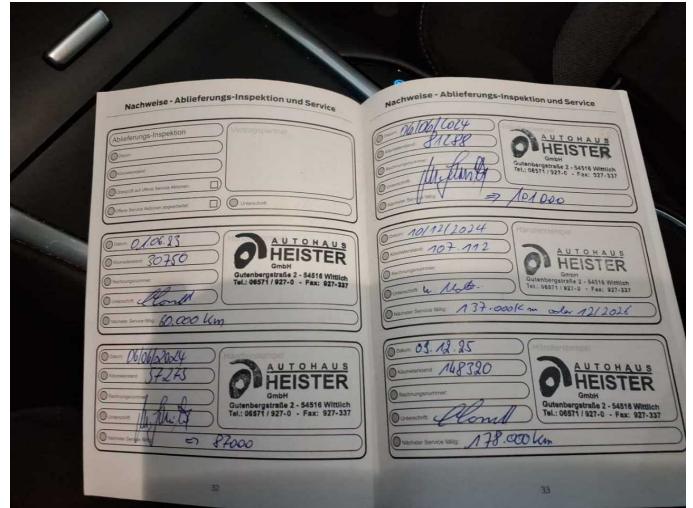


Figure 14: Documents

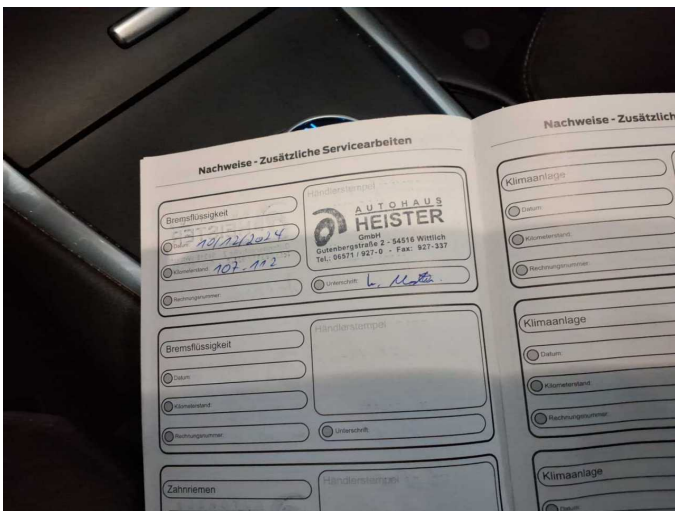


Figure 15: Documents

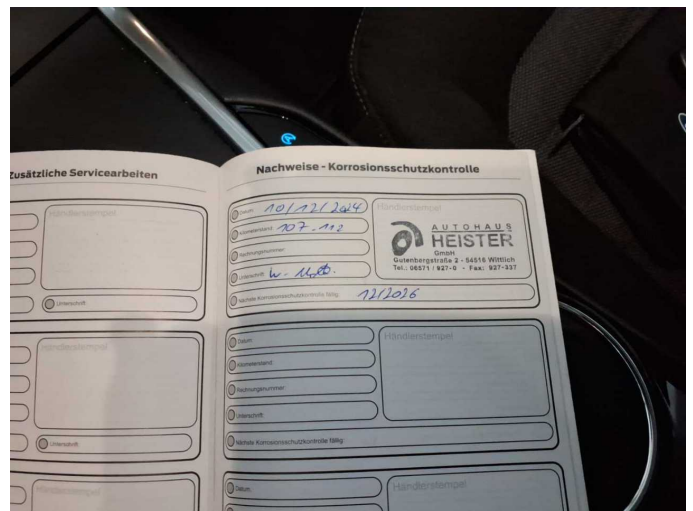


Figure 16: Documents

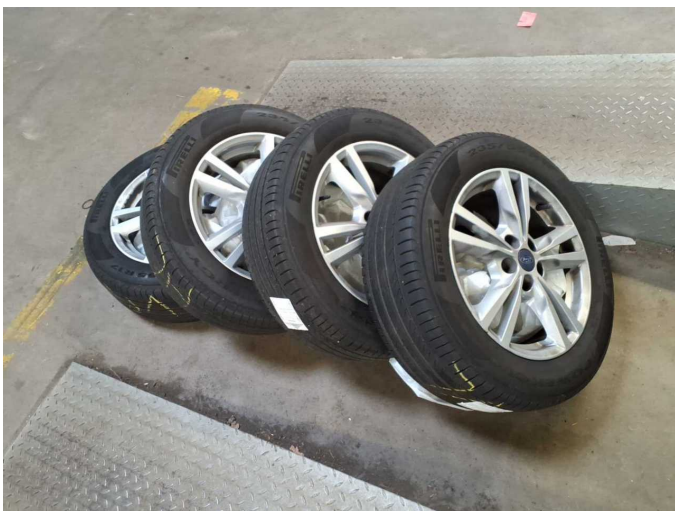


Figure 17: Additional tyres

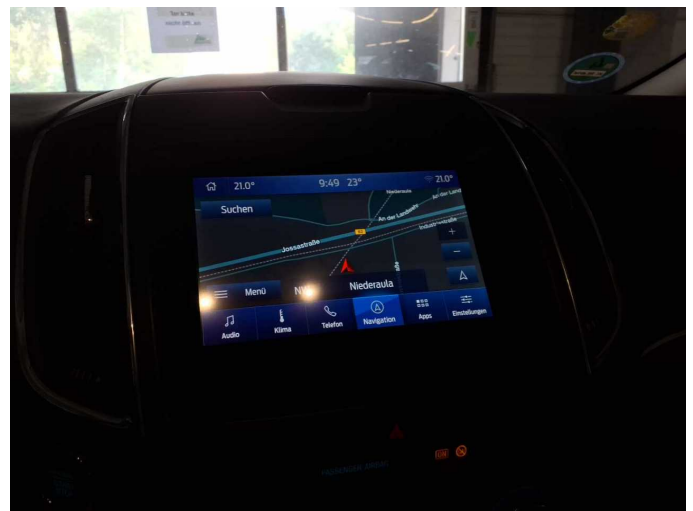


Figure 18: Navigation



Figure 19: Misc.



Figure 20: Misc.



Figure 21: Misc.



Figure 22: Misc.



Figure 23: Misc.



Figure 24: Misc.



Figure 25: Misc.



Figure 26: Misc.



Figure 27: Misc.

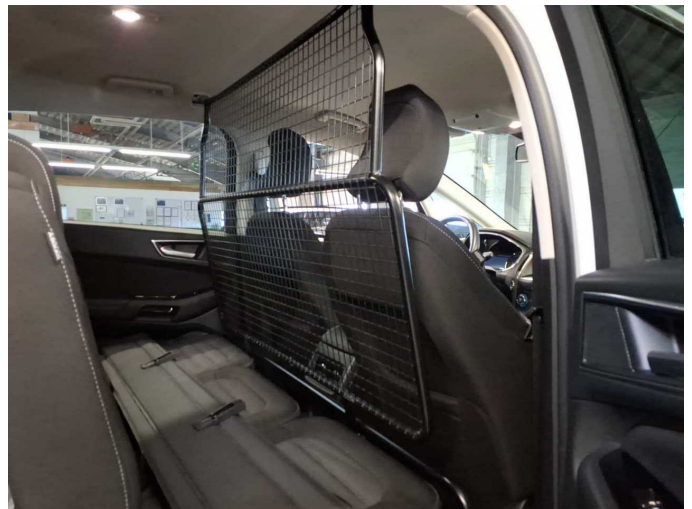


Figure 28: Misc.



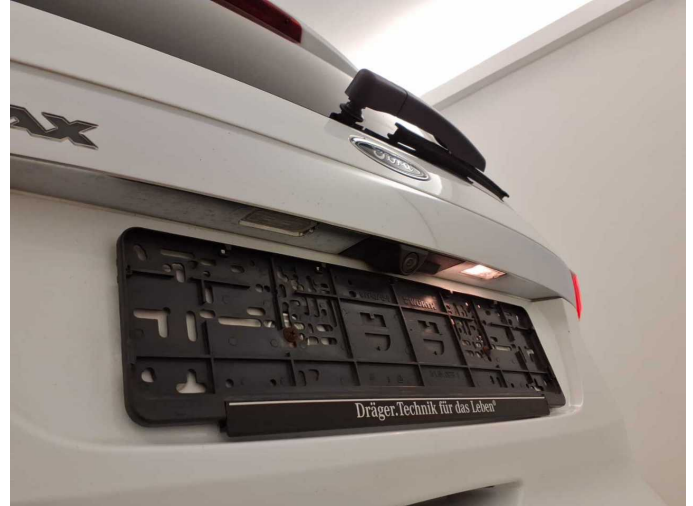
Figure 29: Misc.



Figure 30: Misc.



Damage 1: Tail light: License plate lamp - left side - Non-operational - Replace



Damage 1: Tail light: License plate lamp - left side - Non-operational - Replace



Damage 2: Indicator - front: Mirror - left side - Broken / torn - Replace



Damage 2: Indicator - front: Mirror - left side - Broken / torn - Replace



Damage 2: Indicator - front: Mirror - left side - Broken / torn - Replace



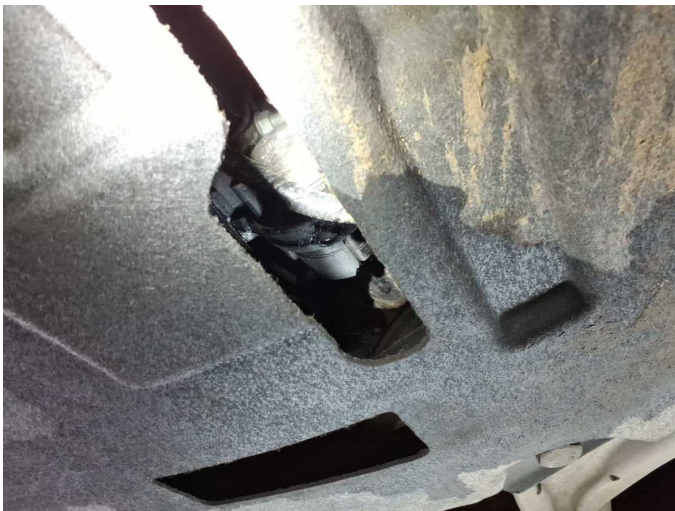
Damage 3: Engine: Engine (Tröpfchenbildung, Umweltbelastung) - Leaking - Perform diagnosis



Damage 3: Engine: Engine (Tröpfchenbildung, Umweltbelastung) - Leaking - Perform diagnosis



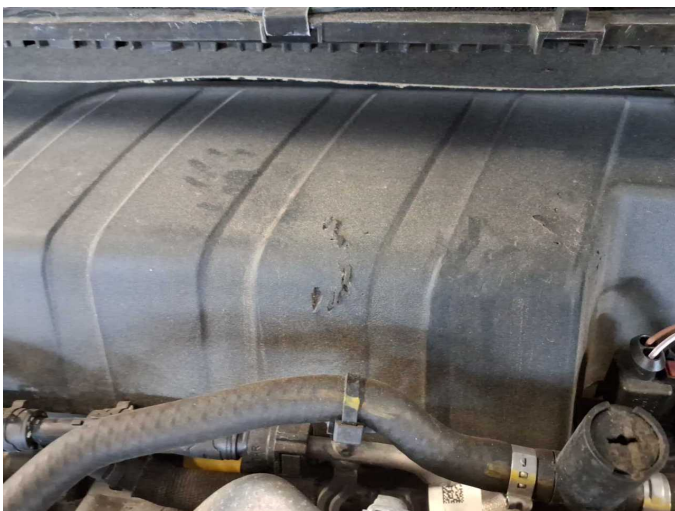
Damage 3: Engine: Engine (Tröpfchenbildung, Umweltbelastung) - Leaking - Perform diagnosis



Damage 3: Engine: Engine (Tröpfchenbildung, Umweltbelastung) - Leaking - Perform diagnosis



Damage 4: Engine: Engine cover - Damage caused by marten / rodent - Replace



Damage 4: Engine: Engine cover - Damage caused by marten / rodent - Replace



Damage 4: Engine: Engine cover - Damage caused by marten / rodent - Replace



Damage 5: Trim / covers: Door trim - front right side - Broken / torn - Smart repair



Damage 5: Trim / covers: Door trim - front right side - Broken / torn - Smart repair



Damage 6: Mudguard - right side: Mudguard - right side - Stone chips - Repair and paint



Damage 6: Mudguard - right side: Mudguard - right side - Stone chips - Repair and paint



Damage 6: Mudguard - right side: Mudguard - right side - Stone chips - Repair and paint



Damage 6: Mudguard - right side: Mudguard - right side - Stone chips - Repair and paint



Damage 7: Mudguard - left side: Mudguard - left side - Stone chips - Repair and paint



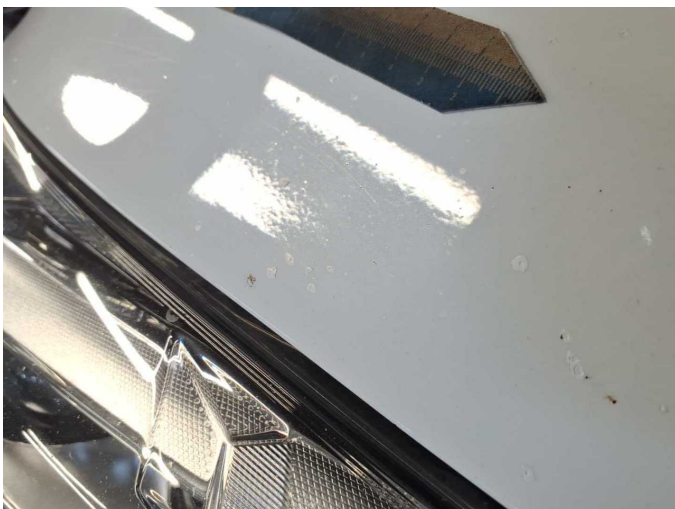
Damage 7: Mudguard - left side: Mudguard - left side - Stone chips - Repair and paint



Damage 8: Bonnet: Bonnet (Sandstrahleffekt) - Stone chips - Repair and paint



Damage 8: Bonnet: Bonnet (Sandstrahleffekt) - Stone chips - Repair and paint



Damage 8: Bonnet: Bonnet (Sandstrahleffekt) - Stone chips - Repair and paint



Damage 8: Bonnet: Bonnet (Sandstrahleffekt) - Stone chips - Repair and paint



Damage 8: Bonnet: Bonnet (Sandstrahleffekt) - Stone chips - Repair and paint



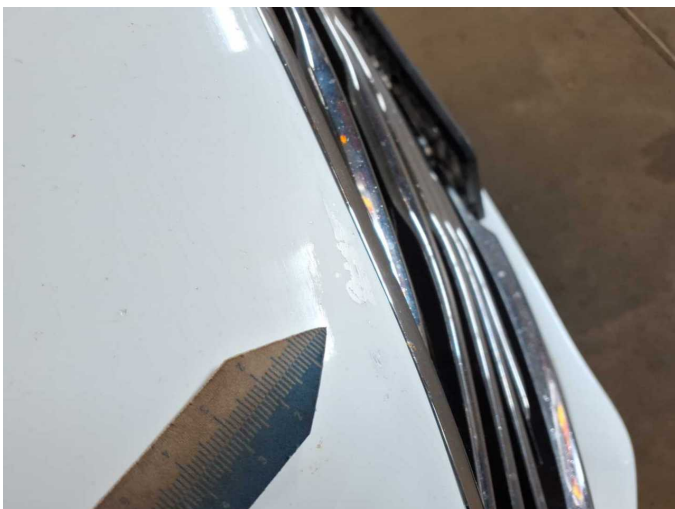
Damage 9: Front bumper: Front bumper (+ Spoiler) - Stone chips - Repair and paint



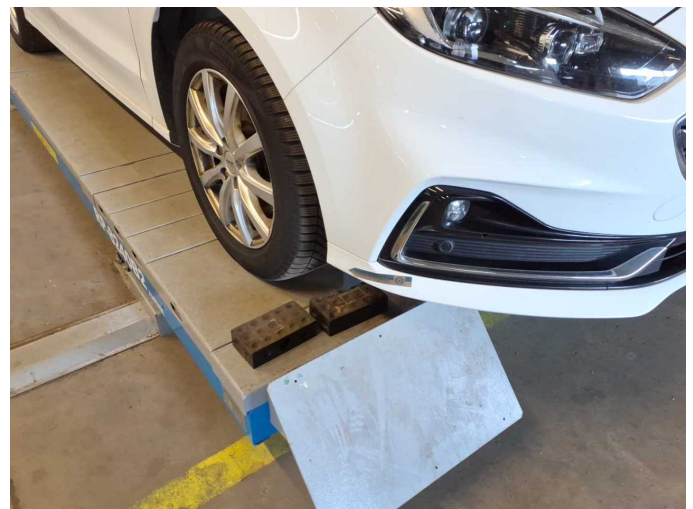
Damage 9: Front bumper: Front bumper (+ Spoiler) - Stone chips - Repair and paint



Damage 9: Front bumper: Front bumper (+ Spoiler) - Stone chips - Repair and paint



Damage 9: Front bumper: Front bumper (+ Spoiler) - Stone chips - Repair and paint



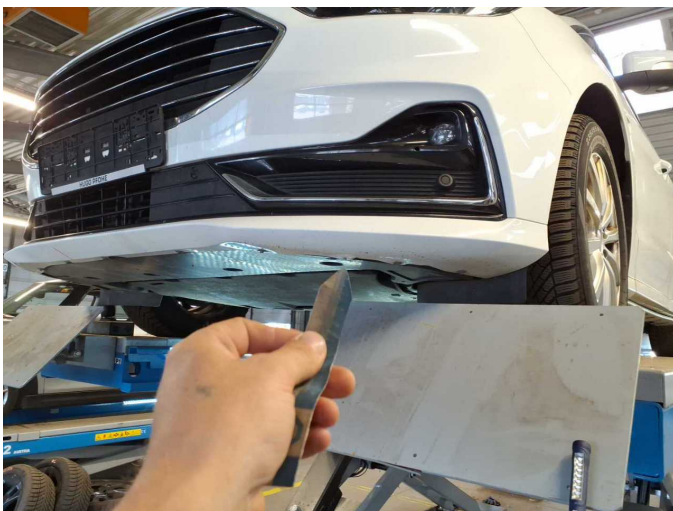
Damage 9: Front bumper: Front bumper (+ Spoiler) - Stone chips - Repair and paint



Damage 9: Front bumper: Front bumper (+ Spoiler) - Stone chips - Repair and paint



Damage 9: Front bumper: Front bumper (+ Spoiler) - Stone chips - Repair and paint



Damage 9: Front bumper: Front bumper (+ Spoiler) - Stone chips - Repair and paint



Damage 9: Front bumper: Front bumper (+ Spoiler) - Stone chips - Repair and paint



Damage 9: Front bumper: Front bumper (+ Spoiler) - Stone chips - Repair and paint



Damage 9: Front bumper: Front bumper (+ Spoiler) - Stone chips - Repair and paint



Damage 10: Vehicle glazing: Windscreen - Stone chips - Replace



Damage 10: Vehicle glazing: Windscreen - Stone chips - Replace



Damage 10: Vehicle glazing: Windscreen - Stone chips - Replace



Wartungshistorie

(gemäß Auftraggeber Informationen)

Fahrgestellnummer: WF0JXXWPCJNM13585
Hersteller / Modell: FORD FORD S-Max 2.0 EcoBlue Aut. TITANIUM

Datum	KM-Stand	Beschreibung
30.04.2026	169.131	Motoröl b. Wartung; Ölfilter ern; Regelwartungsdienst; Wartung Sonstiges
26.03.2026	165.898	Reparatur Sonstiges
09.12.2025	148.320	Kraftstofffilter ern; Luftfiltereinsatz ern; Motoröl b. Wartung; Ölfilter ern; Regelwartungsdienst; Wartung Sonstiges
27.11.2025	147.068	Bremsklötze hinten; Bremsscheiben + Klötze h; Bremsscheiben hinten
05.11.2025	144.318	AU
22.09.2025	137.895	Batterie ern; Systemtest/Eigendiagnose
04.06.2025	129.848	Bremsklötze vorne; Bremsscheiben + Klötze v; Bremsscheiben vorne; Motoröl b. Wartung; Ölfilter ern; Regelwartungsdienst; Wartung Sonstiges
18.02.2025	116.918	Reparatur Sonstiges; Systemtest/Eigendiagnose
10.12.2024	107.112	Bremsflüssigkeit; Bremsflüssigkeit ern; Kraftstofffilter ern; Luftfiltereinsatz ern; Motoröl b. Wartung; Ölfilter ern; Regelwartungsdienst; Wartung Sonstiges
02.07.2024	84.432	Bremsklötze hinten; Bremsscheiben + Klötze h; Bremsscheiben hinten
13.06.2024	81.288	Motoröl b. Wartung; Ölfilter ern; Regelwartungsdienst; Wartung Sonstiges
15.12.2023	57.273	Bremsklötze vorne; Kraftstofffilter ern; Luftfiltereinsatz ern; Motoröl b. Wartung; Ölfilter ern; Regelwartungsdienst; Wartung Sonstiges
05.06.2023	30.750	Motoröl b. Wartung; Ölfilter ern; Regelwartungsdienst; Wartung Sonstiges