

Expertise

Protocol number: 46101424
Order No. / Reference: 26518220
Inspection date: 23 Jun 2026

Manufacturer: Volvo

Model: XC60 T6 AWD Recharge Core

VIN: LYVUZH1V3PB345312



Vehicle details

Manufacturer / Type / Model / Equipment

Volvo XC60 T6 AWD Recharge Core

Vehicle Identification number LYVUZH1V3PB345312

Mileage (Read) 86,035 km

First registration 17 May 2023

Number of holders 3

Power / Engine displacement 186 kw / 1,969 ccm

Fuel type / Cylinder Hybr.B/E ext.aufll / 4

Gearbox / Number of gears Automatic / 8

Type of drive All-wheel drive

Type of vehicle Station wagon

Colour / colour code Crystal weiß

Doors / Seats 5 / 5

Upholstery type Leather

Colour of upholstery Beige



Vehicle details			
Maintenance booklet / proof	Available / complete	Next maintenance in	24,277 km
Last service on / at	03/2026 at 80,312 km		
Key is / should be	2 / 2	FZG documents	ZB#2 (B) was available (copy), ZB#1 (S) was not available.
		Letter No.	HT670521
Previous damage / Accident	Detectable	Repainting	None detectable
Inspection conditions	sufficient	Lifting equipment / pit	yes
Test drive	Not performed	Engine function test	Performed
Manufacturer key number/ type code number	9101 / BRS 00001		
Emission standard	EURO6;WLTP;AP;PI/CI; M, N1 I	fine dust sticker	
Permitted total weight	2,660 kg	Empty weight	

Tyres

Mounted tyres				
#	Tyre size	Type of tyre	Manufacturer	Tread depth
1)	255/45 R20 105V	Summer tyres on Light alloy	Michelin	5mm / 5mm
2)	255/45 R20 105V	Summer tyres on Light alloy	Michelin	5mm / 5mm
Additional tyres				
#	Tyre size	Type of tyre	Manufacturer	Tread depth
1)	235/60 R18 107H	Winter tyres on Light alloy	Pirelli	6mm / 6mm
2)	235/60 R18 107H	Winter tyres on Light alloy	Pirelli	6mm / 6mm
Replacement				
Typ	Tyre size	Type of tyre	Manufacturer	Tread depth
	Tirefit	Expiration date 03/2027		

Legend: Tread depth information for the left tire is listed first, for the right tire it is listed second on the axle in the direction of travel.

TÜV SÜD Auto Partner GmbH
Wiesenring 2
04159 Leipzig

Inspection location
Hartmann Fleet Professionals GmbH
Leerenstraße 25
29683 Bad Fallingbommel



Equipment



Standard equipment

- Airbag, side airbags for driver and front passenger and head/shoulder airbags for all occupants
- Android infotainment system (9" touchscreen (22.9 cm diagonal) - Bluetooth hands-free system incl. audio streaming - Digital vehicle owner's manual - Digital radio reception (DAB+) - 2 USB-C ports (compatible with Apple iPod/iPhone/iPad))
- Automatic climate control with separate temperature control for driver and front passenger (and additional air vents for the 2nd row of seats (integrated in the B-pillar))
- Automatic emergency braking (emergency braking mechanism after the deployment of the airbags or seatbelt pretensioners to prevent secondary accidents)
- Automatic tailgate (electric)
- Cargo area roller blind
- Central locking with two remote controls and integrated emergency keys (automatic locking of doors while driving (can be deactivated) - comfort opening/closing of side windows and, if applicable, sunroof via remote control - panic function integrated into the remote control)
- Child safety lock for the rear doors (electric)
- CleanZone air quality system with activated carbon filter (automatic recirculation and pre-ventilation of the interior when the vehicle is unlocked)
- Digital Services (Google Services (includes Google Maps, Google Assistant, Google Play Store and unlimited data) - Volvo On Call (includes, among other things, alerting the Volvo On Call service center at the touch of a button and additional convenience services via the Volvo CarsApp))
- Driver and passenger side airbags with two-stage deployment system
- Electric auxiliary heater with timer
- Electric windows front and rear (with auto-down and auto-up function)
- Electronic differential lock
- Emergency brake lights (brake lights flash rapidly during heavy deceleration; hazard warning lights are automatically activated below 10 km/h)
- First aid kit and warning triangle
- Full LED headlights "Thor's Hammer" ACTIVE HIGH BEAM (with extended high beam, dynamic cornering light, intelligent high beam assistant with adaptive headlight range control and integrated LED daytime running lights)
- Glazing: Colored glazing
- Hill Start Assist (HSA)
- Illuminated makeup mirror for driver and front passenger
- Interior lighting (headliner, front reading lights, front ambient lighting, front footwell, storage compartment behind center console, glove compartment and luggage compartment)
- Keyless Start (electronic engine start system)
- LED turn signals integrated into the exterior mirrors
- ABS - Anti-lock Braking System
- Acoustic Vehicle Alerting System (AVAS) (Acoustic pedestrian/cyclist protection through artificially generated driving noises in the speed range up to 20 km/h)
- Active safety belts with belt tensioners
- Airbag, driver's knee airbag
- All-wheel drive (AWD) (depending on the driving mode)
- Aluminum door sill plates with Recharge lettering, front
- Aluminum roof rails (integrated)
- Charging box under the cargo floor
- Charging cable Schuko/Type 2 (Mode 2) (7 m length, 1-phase, 10A (for connection to a standard 230-volt household socket))
- Chrome applications in the front bumper
- Chrome applications on the rear of the vehicle
- Chrome trim strip in the door sill area with Recharge lettering
- Chrome window surround
- Deactivation of the high-voltage battery (in case of a collision)
- Digital instrumentation 2nd generation (Full graphic 12.3" driver display (31.2 cm diagonal) with two variable round instruments and information display (e.g. for navigation map view))
- Electric parking brake
- Electrically adjustable exterior mirrors
- Electrically folding exterior mirrors
- Electronic Stability Control (ESC)
- Enhanced air quality system with fine dust filtration according to air quality standard PM2.5
- Fog sensor for automatic activation of the defroster function
- Front center armrest with integrated storage compartment and cup holders
- Front seat belt height adjustment
- Headrests (5) front and rear
- Heated exterior mirrors and rear window (automatic)
- Hill Descent Control (HDC)
- Immobilizer (deactivation of the high-voltage battery in the event of a collision)
- Intelligent driver information system (delays incoming calls or vehicle information in dangerous situations)
- Interior and exterior mirrors automatically dimming
- ISOFIX mounting for the outer rear seats
- Keyless Drive (electronic access system) (with sensor-controlled tailgate, illuminated door handles and floor lights)
- Lashing eyes in the luggage compartment (foldable)
- Luggage compartment partition net
- On-board computer (with vehicle control functions)
- Outdoor temperature display
- Package: Parking Assistance (front and rear parking aid with automatic braking intervention (rear))
- Parking ticket holder
- Phone: Inductive smartphone charging system (Wirelessly charges smartphones that support the Qi standard on a charging pad)



- Panoramic glass sliding sunroof with lifting function (electric) (with integrated, continuously adjustable sunshade)
- Passenger side airbag can be deactivated
- Plastic loading sill protector in the luggage compartment
- Power outlet (12-volt connection in the luggage compartment)
- Radio accessories: Two USB-C ports on the back of the center console
- Radio: High Performance Sound audio system
- Rear parking assist with automatic braking intervention (rear)
- Rear seats in a 40/60 split or completely foldable with pass-through function
- Run-off Road Protection (preventive protection system in case of unintentional leaving of the road or impending rollovers and door unlocking)
- Safety braking system with disc brakes all around (internally ventilated) (automatic brake system pre-tensioning, brake assist and automatic hold function)
- Seats: Driver and front passenger seats height adjustable (electrically) (including manual tilt adjustment for the driver's seat)
- Speed-sensitive power steering
- Steering wheel adjustable for height and reach
- Third brake light (emergency brake lights (brake lights flash rapidly in case of heavy deceleration; hazard warning lights are automatically activated at speeds below 10 km/h))
- Wheels: Tire sealant (Incl. 12-volt compressor, maximum speed 80 km/h)
- Whiplash Protection System (WHIPS) (including immersion protection on all seats and energy-absorbing front seat cushions)

Extra equipment

- Alarm system with motion/tilt sensor (security lock)
- Paint finish: Crystal White Pearl Effect
- Package: Seat Comfort Package (Electrically adjustable front passenger seat - Electrically adjustable driver's seat with memory function for driver's seat and exterior mirror settings (stored in remote control) - Lumbar support (4-way electrically adjustable) for driver and front passenger seats - Memory function for front passenger seat - Adjustable leg support for driver and front passenger seats)
- Package: Winter Package (front seat heating - rear seat heating - steering wheel heating)
- Upholstery: Leather/leatherette comfort seats

- Preparation for Trailer Stability Assist (TSA)
- Radio accessories: Subwoofer
- Rain sensor
- Rear view camera
- Roof edge spoiler
- Safety Assistance (Automatic emergency braking system with detection of vehicles, cyclists, pedestrians and large animals including intersection braking assistant and emergency braking assistant for oncoming traffic - Connected Safety - Driver Alert - Attention warning - Distance warning - Variable speed limiter - Cruise control - Lane Keeping Aid (LKA) - Active lane keeping assistant - Oncoming Lane Mitigation - Ready to Drive notification - Road Edge Detection - Road Sign Information (RSI) - Traffic sign recognition)
- Seats: Lumbar support (2-way electrically adjustable) for driver and front passenger seats
- Start/Stop technology
- Steering wheel: Multifunction buttons on the steering wheel
- Tire pressure monitoring system (with tire-specific pressure loss warning)
- Transmission: 8-speed automatic transmission
- Upholstery: Premium textile comfort seats
- Warning tone/indicator when seat belts are not fastened (for all seats)
- Wheels: 18" alloy wheels, 5-twin-spoke design, diamond cut/high-gloss black (with all-season tires 235/60 R18 with rims 7.5 Jx 18")

- Towbar (semi-electric)
- Package: Driver Awareness Package (Blind Spot Information System (BLIS) - Blind Spot Assist including Lane Departure Warning for rapidly approaching vehicles, with steering intervention if warning signals are ignored - Cross Traffic Alert (CTA) - Cross-traffic warning with braking intervention - Warning of vehicles, cyclists, and pedestrians approaching from the side when reversing out of parking spaces, including braking to a standstill if warning signals are ignored - Rear Impact Mitigation - Preventive protection in case of an impending rear-end collision)

Brief expert findings

Documents submitted	At the time of the inspection, the vehicle registration certificate Part 2 (title) was available, but the vehicle registration certificate Part 1 (document) was not. (Copy)
VIN comparison	The vehicle identification number (VIN) was read from the vehicle and its conformity with the submitted documents was confirmed by the undersigned during the inspection.
Inspection	The inspection conditions were sufficient for the assessment of the vehicle. Lifting equipment and/or a pit were available for examining the vehicle.
Test drive	No test drive/shunting maneuver was carried out during the inspection of the vehicle.
Engine function test	An engine test run was performed.



Value reducing factors

No.	Component group	Description
1	Wheel / tyres	Alloy rim - front right side - Scratch(es) - Loss in value
2	Engine	Engine cover - top / cover - Damage caused by marten / rodent - Replace
3	Vehicle glazing	Windscreen - Broken / torn - Replace

Previous damages

No.	Previous damage	Extent of damage (Net)
1	Front, Side - left, Provided by user / customer, from 26 Feb 2024	5.749,43 €

Order/Scope of Order

An order was placed to prepare a sales report for the described vehicle. This report includes the following:

- Description of key vehicle information
- Documentation of equipment features
(*Delivery by third-party service providers*)
- Documentation of damage, defects, missing parts
- Documentation of prior damage, unrepaired prior damage, repainting
- A brief visual or functional inspection of the equipment details, if possible.
(*Functional testing of driver assistance systems is not included in the scope of services!*)
- a photographic documentation of the vehicle

Basis for the order

This product is based on the guidelines for vehicle returns and valuations published by Alphabet Fleet GmbH. The expert makes the specific findings in each individual case objectively, within the framework of the prescribed standards, based on their own expertise.

The vehicle inspection takes place in a fully assembled, unassembled state.

Damage or defects that can only be detected during disassembly/diagnostic work or through further investigation remain within the realm of prognostic risk. An increased risk exists due to concealed defects caused by fraudulent misrepresentation and which were not identifiable by the expert.

Damage or defects resulting from normal use or wear and tear of the vehicle will be accepted in accordance with the applicable standard.

There was no explicit identification or monetary consideration of the expected features within the product.

Features which, in their nature and extent, slightly exceed normal use but do not constitute unacceptable damage, will be documented and indicated as signs of wear, if applicable.

Damage or defects that, according to the applicable standard, can no longer be attributed to normal use or wear and tear are listed under "Value Reducing Factors" in the product description.

Depending on the product specification, a monetary ID can be provided. If this takes place, the costs can be 100% d or pro rata depending on the vehicle's age and mileage.

Previous damages

According to available information previous damages were repaired at the vehicle. Traces of repairs, which allow conclusions about the area of repair, were not recognizable during the inspection.

Comments

- Winterradsatz ist kein Bestandteil des Auslieferungsumfangs.



Figure 1: Diagonal front (left)



Figure 2: Diagonal front (right)



Figure 3: Diagonal rear (left)



Figure 4: Diagonal rear (right)



Figure 5: Interior - front



Figure 6: Interior - rear



Figure 7: Instrument cluster



Figure 8: Instrument panel



Figure 9: Interior 360° view



Figure 10: Cargo area

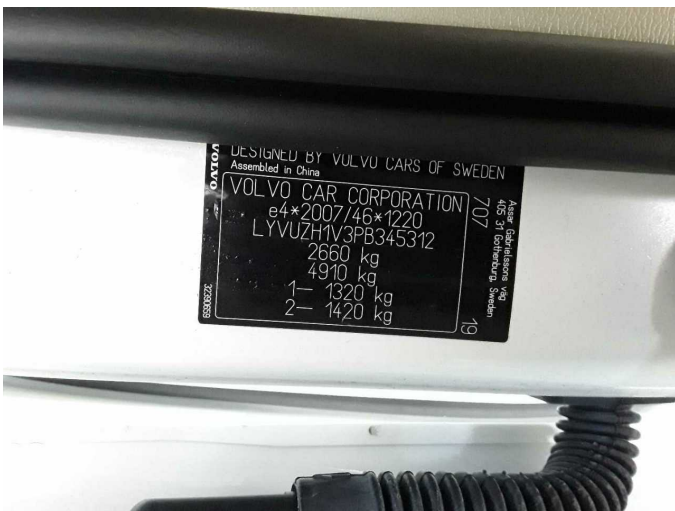


Figure 11: VIN



Figure 12: Mounted tyres



Figure 13: Documents



Figure 14: Documents

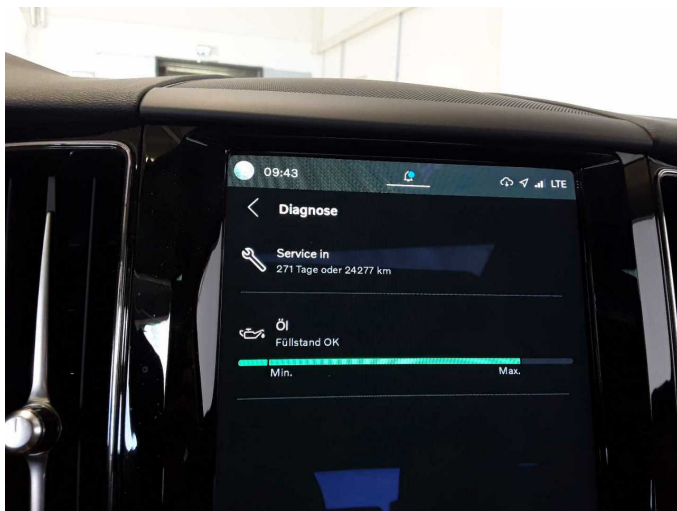


Figure 15: Documents



Figure 16: Documents



Figure 17: Additional tyres

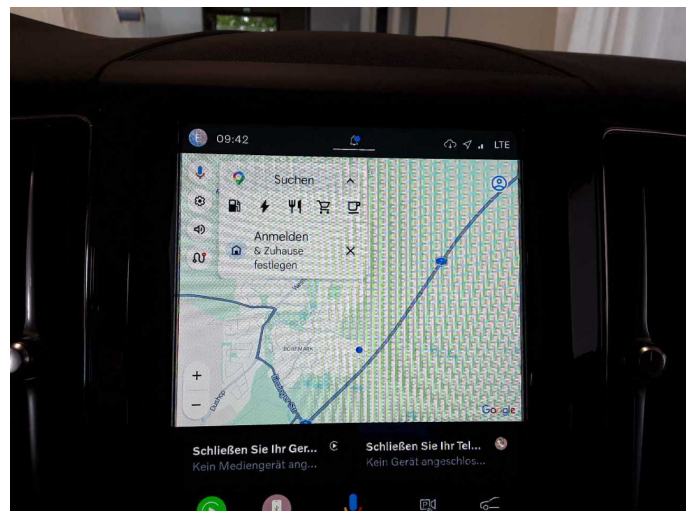


Figure 18: Navigation



Figure 19: Misc.



Figure 20: Misc.



Figure 21: Misc.



Figure 22: Misc.



Figure 23: Misc.



Figure 24: Misc.



Figure 25: Misc.



Figure 26: Misc.



Figure 27: Misc.



Figure 28: Misc.



Damage 1: Wheel / tyres: Alloy rim - front right side - Scratch(es) - Loss in value



Damage 1: Wheel / tyres: Alloy rim - front right side - Scratch(es) - Loss in value



Damage 1: Wheel / tyres: Alloy rim - front right side - Scratch(es) - Loss in value



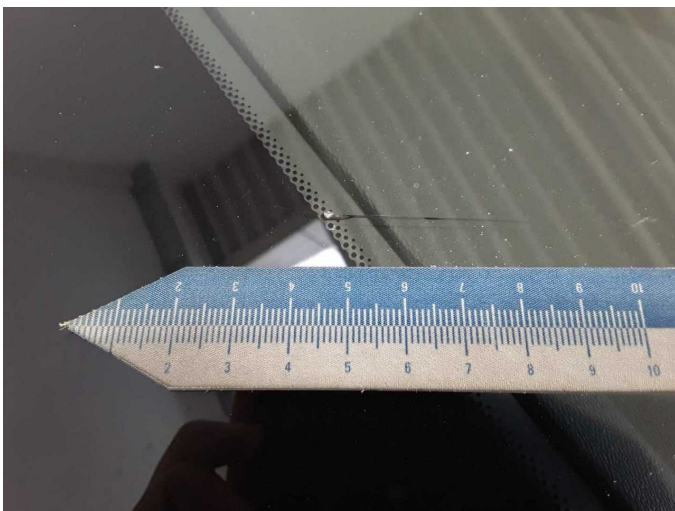
Damage 2: Engine: Engine cover - top / cover - Damage caused by marten / rodent - Replace



Damage 2: Engine: Engine cover - top / cover - Damage caused by marten / rodent - Replace



Damage 3: Vehicle glazing: Windscreen - Broken / torn - Replace



Damage 3: Vehicle glazing: Windscreen - Broken / torn - Replace