

Expertise

Protocol number: 46099583
Order No. / Reference: 26460916
Inspection date: 23 Jun 2026

Manufacturer: Skoda

Model: Superb Combi 2.0 TDI DSG Style

VIN: TMBJR7NP6R7037714



Vehicle details

Manufacturer / Type / Model / Equipment

Skoda Superb Combi 2.0 TDI DSG Style

Vehicle Identification number TMBJR7NP6R7037714

Mileage (Read) 74,800 km

First registration 19 Feb 2024

Number of holders 1

Next periodical technical inspection 02/2027
(Report not on hand)

Power / Engine displacement 147 kw / 1,968 ccm

Fuel type / Cylinder Diesel / 4

Gearbox / Number of gears Automatic / 7

Type of drive Front drive

Type of vehicle Station wagon

Colour / colour code Race Blau Metallic

Doors / Seats 5 / 5

Upholstery type Cloth

Colour of upholstery Black-Anthracite



Vehicle details

Maintenance booklet / proof	digital proof / complete	Next maintenance in	26,200 km
Last service on / at	03/2026 at 70,909 km		
Key is / should be	2 / 2	FZG documents	ZB#2 (B) was available (copy), ZB#1 (S) was not available.
		Letter No.	HB693348
Previous damage / Accident	Detectable	Repainting	Detectable
Inspection conditions	sufficient	Lifting equipment / pit	No
Test drive	Not performed	Engine function test	Performed
Manufacturer key number/ type code number	8004 / AWB 00712		
Emission standard	EURO6;WLTP;AP;PI/CI; M, N1 I	fine dust sticker	
Permitted total weight	2,237 kg	Empty weight	

Tyres

Mounted tyres

#	Tyre size	Type of tyre	Manufacturer	Tread depth
1)	215/55 R17 94W	Summer tyres on Light alloy	Pirelli	6mm / 6mm
2)	215/55 R17 94W	Summer tyres on Light alloy	Pirelli	6mm / 6mm

Additional tyres

#	Tyre size	Type of tyre	Manufacturer	Tread depth
1)	215/50 R17 95V	Winter tyres on Light alloy	Michelin	6mm / 6mm
2)	215/50 R17 95V	Winter tyres on Light alloy	Michelin	6mm / 6mm

Replacement

Typ	Tyre size	Type of tyre	Manufacturer	Tread depth
	Tirefit	Expiration date 10/2027		

Legend: Tread depth information for the left tire is listed first, for the right tire it is listed second on the axle in the direction of travel.



Equipment

Standard equipment

- Closed storage compartments behind the wheel arches in the trunk, including cargo elements
- Airbag, driver's knee airbag
- Airbag, front side airbags
- Traction control (ASR)
- Electrically adjustable and heated exterior mirrors
- Exterior mirrors and door handles in body color
- Illuminated glove compartment
- Hydraulic brake assist (HBA)
- Roof rails, anodized
- Diesel particulate filter and SCR catalyst
- Tachometer
- Dynamic Light Assistant (Masked Continuous High Beam)
- Electric tailgate opening
- Electronic transverse differential lock (XDS+)
- Driving light assistant and rain sensor (Easy Light Assist)
- Front radar assistant including city emergency braking function
- Cruise control system including speed limiter
- Tinted windows
- Rear window wiper including windshield washer system
- ISOFIX preparation on the outer rear seats, including top tether
- Boot cover, roll-up and removable, semi-automatic
- Radiator grille slats, frame and window surround chrome-plated
- Remote release of the rear seat backrests in the trunk
- Steering wheel: Steering wheel with multifunction buttons including paddle shifters
- Rear center armrest with cup holders and pass-through option
- Multifunctional storage compartment under the boot cover
- LED fog lights with integrated cornering lights
- Upholstery: Cloth
- Radio accessories: Voice control
- Radio accessories: Wireless SmartLink
- Umbrella compartments in the front side doors
- Tire mobility kit
- Gearshift and handbrake levers in leather
- Electromechanical power steering
- Seats: Heated front seats
- Seats: Electrically adjustable front seats
- Seats: Height-adjustable front seats
- Seats: Rear seat backrest split 60:40, foldable
- Sun visor on driver and passenger side with illuminated make-up mirror
- 12V socket in the center console, front and rear
- Telephone: Bluetooth hands-free system
- Chrome-plated elements
- Lashing eyes in the trunk
- Central locking with remote control
- Storage compartments
- Airbag, driver and switchable passenger airbag
- Airbag, head airbags
- Anti-lock braking system (ABS)
- Dashboard in black / black, door trim in black, headliner in grey
- Electrically folding exterior mirrors
- Hill start assist
- Grey headliner
- Decorative inlay Dark Brushed
- Digital Cockpit Plus 10.2"
- Third brake light
- Easy Start (start-stop button instead of ignition lock)
- Electronic parking brake including auto-hold function
- Electronic Stability Control (ESC)
- Electric windows front and rear, including anti-pinch protection and child safety lock
- Front and rear footwell lighting
- Transmission: 7-speed dual-clutch transmission (DSG)
- Heated rear window
- Interior mirror automatically dimming
- Child safety lock for rear doors & windows, electric
- Air Care Climatronic air conditioning (2-zone)
- Front and rear headrests are height-adjustable.
- Metal loading sill protector
- LED reading lights at the front and rear of the headliner
- Steering wheel: Height and reach adjustable leather steering wheel
- Matrix LED headlights
- Front center armrest with storage compartment
- Engine drag torque control (MSR)
- Multi-collision brake
- Rear parking sensors
- Radio accessories: Digital radio reception DAB+
- Radio accessories: USB ports at the front (Type-C) and USB charging port (Type-A) in the center armrest
- Tire pressure monitoring
- Wheels: 17" Drakon alloy wheels
- Heated windshield washer nozzles
- Superb seat belts
- Seats: Adjustable lumbar support in the front seats
- Seats: Electric operation of the front passenger seat from the rear
- SKODA Care Connect
- Start/stop system including brake energy recuperation
- 12V socket in the trunk
- Sunset (rear window and rear side windows tinted dark)
- Door sill plates
- Glazing: Acoustic glazing in the front side windows
- Immobiliser



Extra equipment

- Front and rear parking sensors
- Heated windshield, wireless
- Luggage net partition
- Paint finish: Metallic
- Package: Business Amundsen (Amundsen navigation system - 8" capacitive touchscreen in glass design - Phonebox - Traveller assistance system (traffic sign recognition, predictive lane keeping assist pACC, adaptive lane keeping assist, emergency and traffic jam assist) - 230 V socket and 3 USB ports, tablet holder - Infotainment Online (3-year subscription))

Brief expert findings

Documents submitted	At the time of the inspection, the vehicle registration certificate Part 2 (title) was available, but the vehicle registration certificate Part 1 (document) was not. (Copy)
VIN comparison	The vehicle identification number (VIN) was read from the vehicle and its conformity with the submitted documents was confirmed by the undersigned during the inspection.
Inspection	The inspection conditions were sufficient for the assessment of the vehicle. No lifting equipment or pit was available for inspecting the vehicle. Therefore, inspection of the vehicle's underside was only possible to a limited extent.
Test drive	No test drive/shunting maneuver was carried out during the inspection of the vehicle.
Engine function test	An engine test run was performed.

Value reducing factors

No.	Component group	Description
1	Rear bumper	Rear bumper - Scratch(es) - Paint
2	Side panel - rear left side	Side panel - Dent / paintcoat damage - Repair and paint

Wear and tear

No.	Component group	Description
1	Front bumper	Front bumper - Stone chips - No deduction
2	Vehicle glazing	Windscreen - Stone chips - No deduction

The vehicle shows signs of wear and tear commensurate with its age and use.

Previous damages

No.	Previous damage	Extent of damage (Net)
1	Side - left, Provided by user / customer, from 9 Dec 2024	1.711,57 €
2	Side right, Provided by user / customer, from 15 Apr 2026	2.007,58 €

Repainting

No.	Repainting
1	Bonnet, Door - rear right side, Professionally carried out, Invoice of repair done Non-existent

Paint coat thickness measurement

Bonnet	274 µm	Door - rear right side	222 µm
--------	--------	------------------------	--------



Order/Scope of Order

An order was placed to prepare a sales report for the described vehicle. This report includes the following:

- Description of key vehicle information
- Documentation of equipment features
(Delivery by third-party service providers)
- Documentation of damage, defects, missing parts
- Documentation of prior damage, unrepaired prior damage, repainting
- A brief visual or functional inspection of the equipment details, if possible.
(Functional testing of driver assistance systems is not included in the scope of services!)
- a photographic documentation of the vehicle

Basis for the order

This product is based on the guidelines for vehicle returns and valuations published by Alphabet Fleet GmbH. The expert makes the specific findings in each individual case objectively, within the framework of the prescribed standards, based on their own expertise.

The vehicle inspection takes place in a fully assembled, unassembled state.

Damage or defects that can only be detected during disassembly/diagnostic work or through further investigation remain within the realm of prognostic risk. An increased risk exists due to concealed defects caused by fraudulent misrepresentation and which were not identifiable by the expert.

Damage or defects resulting from normal use or wear and tear of the vehicle will be accepted in accordance with the applicable standard.

There was no explicit identification or monetary consideration of the expected features within the product.

Features which, in their nature and extent, slightly exceed normal use but do not constitute unacceptable damage, will be documented and indicated as signs of wear, if applicable.

Damage or defects that, according to the applicable standard, can no longer be attributed to normal use or wear and tear are listed under "Value Reducing Factors" in the product description.

Depending on the product specification, a monetary ID can be provided. If this takes place, the costs can be 100% or pro rata depending on the vehicle's age and mileage.

Previous damages

According to available information previous damages were repaired at the vehicle. Traces of repairs, which allow conclusions about the area of repair, were not recognizable during the inspection.

Comments

- Die Unterbodenbesichtigung war nur ebenerdig & eingeschränkt möglich. Mehrkosten möglich.

- Winterradsatz ist kein Bestandteil des Auslieferungsumfangs.



Figure 1: Diagonal front (left)



Figure 2: Diagonal front (right)



Figure 3: Diagonal rear (left)



Figure 4: Diagonal rear (right)



Figure 5: Interior - front



Figure 6: Interior - rear



Figure 7: Instrument cluster



Figure 8: Instrument panel



Figure 9: Interior 360° view



Figure 10: Cargo area

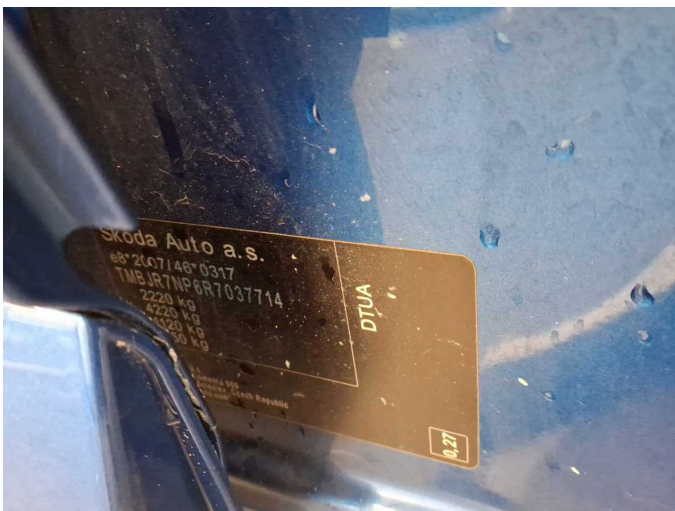


Figure 11: VIN



Figure 12: Mounted tyres



Figure 13: Documents

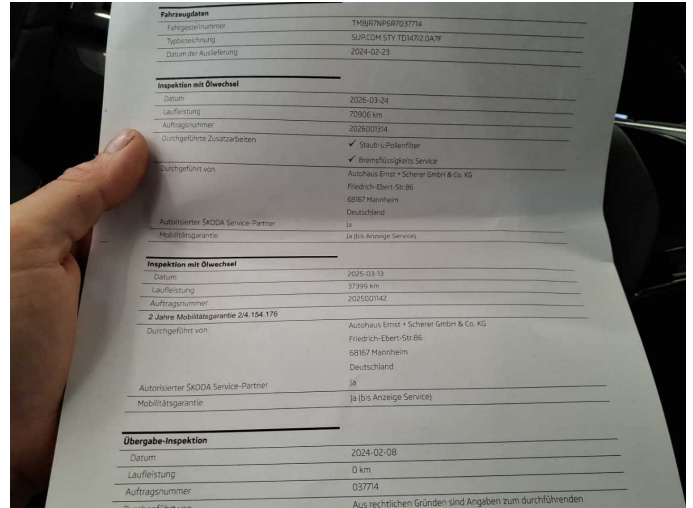


Figure 14: Documents



Figure 15: Documents



Figure 16: Additional tyres



Figure 17: Navigation



Figure 18: Misc.



Figure 19: Misc.



Figure 20: Misc.



Figure 21: Misc.



Figure 22: Misc.



Figure 23: Misc.



Figure 24: Misc.



Figure 25: Misc.



Figure 26: Misc.

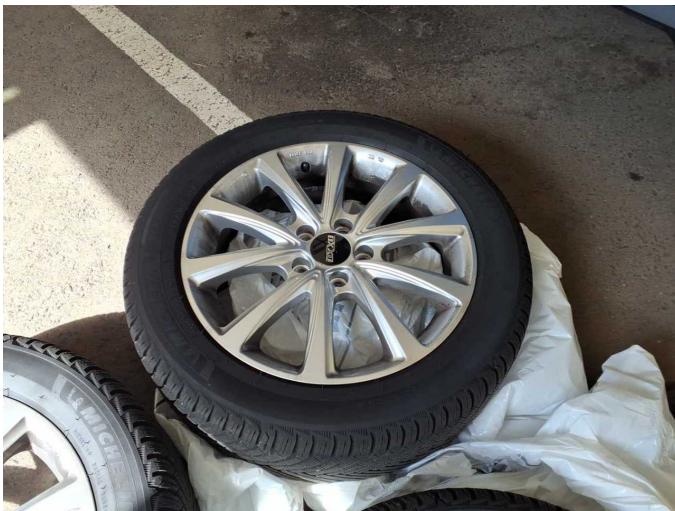


Figure 27: Misc.



Figure 28: Misc.



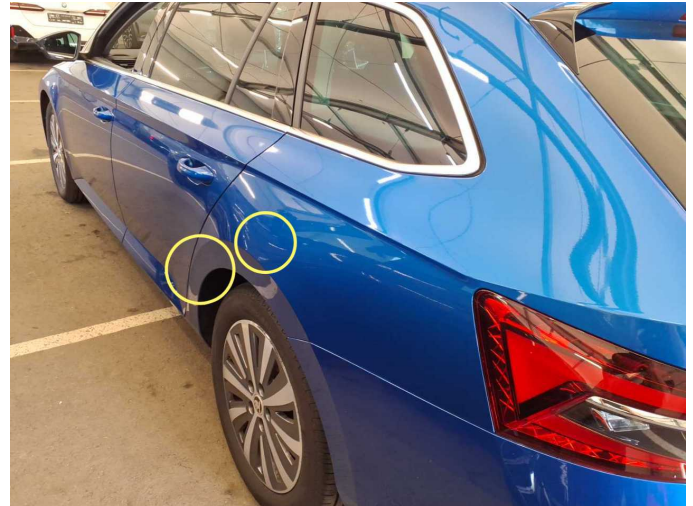
Figure 29: Misc.



Damage 1: Rear bumper: Rear bumper - Scratch(es) - Paint



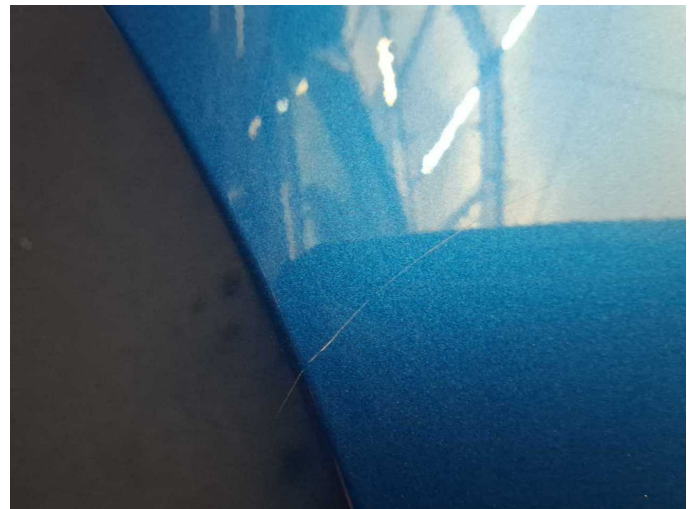
Damage 1: Rear bumper: Rear bumper - Scratch(es) - Paint



Damage 2: Side panel - rear left side: Side panel - Dent / paintcoat damage - Repair and paint



Damage 2: Side panel - rear left side: Side panel - Dent / paintcoat damage - Repair and paint



Damage 2: Side panel - rear left side: Side panel - Dent / paintcoat damage - Repair and paint



Damage 2: Side panel - rear left side: Side panel - Dent / paintcoat damage - Repair and paint



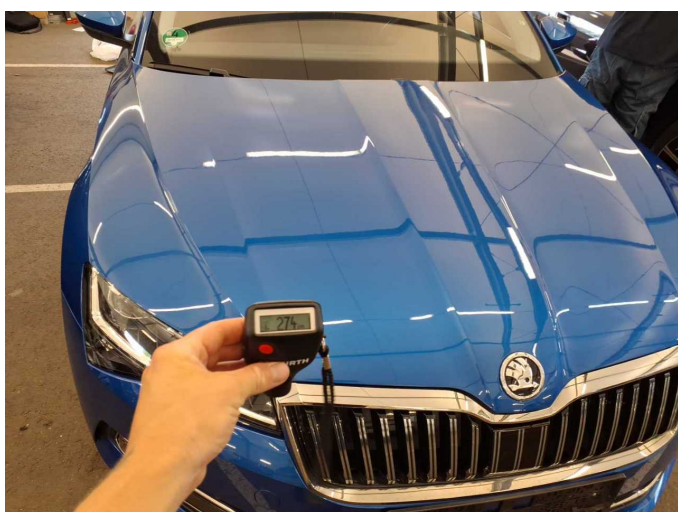
Repainting 1: Bonnet, Door - rear right side



Repainting 1: Bonnet, Door - rear right side



Repainting 1: Bonnet, Door - rear right side



Repainting 1: Bonnet, Door - rear right side



Wartungshistorie

(gemäß Auftraggeber Informationen)

Fahrgestellnummer: TMBJR7NP6R7037714

Hersteller / Modell: SKODA SKODA Superb Combi 2.0 TDI DSG Style

Datum	KM-Stand	Beschreibung
24.03.2026	70.909	Bremse Sonstiges; Bremsflüssigkeit; Bremsflüssigkeit ern; Bremsklötze hinten; Bremsklötze vorne; Bremsscheiben + Klötze h; Bremsscheiben + Klötze v; Bremsscheiben hinten; Bremsscheiben vorne; Motoröl b. Wartung; Ölfilter ern; Regelwartungsdienst; Wartung Sonstiges
13.03.2025	37.399	Motoröl b. Wartung; Ölfilter ern; Regelwartungsdienst; Wartung Sonstiges