

Expertise

Protocol number: 45506815
Order No. / Reference: 26333497
Inspection date: 18 May 2026

Manufacturer: Ford

Model: Focus Turnier 1.5 EcoBlue Start-Stopp-System Aut. TITANIUM

VIN: WF0PXXGCHPPD63471



Vehicle details

Manufacturer / Type / Model / Equipment

Ford Focus Turnier 1.5 EcoBlue Start-Stopp-System Aut. TITANIUM

Vehicle Identification number WF0PXXGCHPPD63471

Mileage (Read) 95,309 km

First registration 21 Mar 2023

Number of holders 1

Power / Engine displacement 85 kw / 1,499 ccm

Fuel type / Cylinder Diesel / 4

Gearbox / Number of gears Automatic / 8

Type of drive Front drive

Type of vehicle Station wagon

Colour / colour code Frozen White

Doors / Seats 5 / 5

Upholstery type Cloth

Colour of upholstery Anthracite

Vehicle with smoke odor no



Vehicle details

Maintenance booklet / proof	digital proof / complete	Next maintenance in	20 %
Last service on / at	09/2025 at 81,017 km		
Key is / should be	2 / 2	FZG documents	ZB#2 (B) was available (copy), ZB#1 (S) was not available.
		Letter No.	GT889370
Previous damage / Accident	None detectable	Repainting	None detectable
Inspection conditions	sufficient	Lifting equipment / pit	yes
Test drive	Not performed	Engine function test	Performed
Manufacturer key number/ type code number	8566 / BYE 00002		
Emission standard	EURO6;WLTP;AP;PI/CI; M, N1 I	fine dust sticker	
Permitted total weight	2,035 kg	Empty weight	

Tyres

Mounted tyres

#	Tyre size	Type of tyre	Manufacturer	Tread depth
1)	205/60 R16 96H	Winter tyres on Light alloy	Firestone	5mm / 5mm
2)	205/60 R16 96H	Winter tyres on Light alloy	Firestone	6mm / 6mm

Replacement

Typ	Tyre size	Type of tyre	Manufacturer	Tread depth
Tirefit		Expiration date 03/2027		

Legend: Tread depth information for the left tire is listed first, for the right tire it is listed second on the axle in the direction of travel.

TÜV SÜD Auto Partner GmbH
Wiesenring 2
04159 Leipzig

Inspection location
Mosolf SE & Co.KG
Faberweg 25
73230 Kirchheim unter Teck



Equipment



Standard equipment

- Airbag: Passenger airbag deactivation
- Exterior mirrors painted in body color, electrically adjustable, heated and foldable (with integrated turn signals)
- Hill start assist
- Roof rails, aluminum
- Diesel particulate filter (DPF)
- Electronic Shifter
- Driver information system with on-board computer, color (10.7 cm screen diagonal)
- Electric front and rear windows (with all-around closing function)
- FordPass Connect including live traffic information
- Luggage compartment lighting
- Cruise control
- Transmission: 8-speed automatic transmission
- Back window, heater
- Interior lighting with LED technology (front and rear and map reading lights at the front)
- Isofix mounting (including top tether anchor points on the outer seats of the 2nd row)
- Air conditioning with automatic temperature control (separately adjustable for driver and passenger side (2-zone automatic climate control))
- Headrests: 2 front and 3 rear, height adjustable
- LED taillights
- Steering wheel: 3-spoke design steering wheel (in Sensico leather look)
- Steering column, adjustable (adjustable in height and reach)
- Front center console "Premium" (sliding armrest - cup holders - storage compartments - 12-volt and USB connection)
- Front and rear parking pilot system
- Upholstery: Cloth
- Post-Collision Assist (In the event of a severe collision, which would also deploy the airbag and in which the driver might be incapacitated, this system initiates the braking process. This reduces the risk of colliding with further obstacles and road users after the initial collision. The driver can intervene and operate the accelerator or brake pedal manually throughout the entire process.)
- Pre-Collision Assist (Forward Alert system with pedestrian and bicycle detection)
- Windscreen wipers with rain sensor (sensitivity adjustable)
- Headlight assistant with day/night sensor
- Electro-mechanical speed-dependent power steering (EPAS - Electric Power Assisted Steering)
- Seats: Driver's seat height adjustable (with manually adjustable lumbar support)
- Seats: Rear seat backrest (foldable, 60:40 split)
- Seats: Front sports seats with enhanced lateral support
- 12-volt power outlet in the luggage compartment
- Variable radiator air intake
- Anti-lock braking system (ABS) with electronic brake force distribution (EBD)
- Attachment points behind the second row of seats for mounting the safety partition net
- Fabric headliner
- Roof spoiler painted in car color
- Tachometer
- Electronic Stability Program (ESP) (with Emergency Brake Assist (EBA) and Traction Control System (TCS))
- Lane keeping assist including lane keeping assist
- Electronic parking brake
- Ford Power Start function (keyless start)
- Luggage compartment cover
- Speed limiter (Intelligent speed limiter with speed limit display)
- Illuminated glove compartment
- rear window wiper
- Interior mirror, automatically dimming
- Intelligent safety system (front airbag for driver and front passenger - front and rear head and shoulder airbags - side airbag for driver and front passenger - seat belt tensioners and force limiters in the front and on the outer seats of the 2nd row - 3-point seat belts on all seats, height-adjustable in the front - safety pedal assembly)
- Paint finish: Solid
- LED headlights (LED low beam - LED high beam - LED daytime running lights incl. integrated LED turn signals at the front - LED cornering lights, static, incl. integrated LED fog light function and maneuvering light)
- Make-up mirrors in driver and passenger sun visors
- MyKey key system (individually programmable second key)
- Navigation: Ford SYNC 4 including Ford navigation system with AppLink, 13.2" touchscreen and DAB/DAB+ (13.2" touchscreen (33 cm) - 6 speakers - Android Auto and Apple CarPlay - Steering wheel controls - Digital owner's manual - Bluetooth hands-free calling and audio streaming - USB ports - Voice control for audio and phone - Ford Power-Up software updates - Intelligent route suggestions - Customizable user profiles - Radio player - Audible and visual route guidance, dynamic and cloud-based navigation with advanced traffic information system, lane guidance and road map for Europe)
- Tire repair kit (for use at a maximum speed of 80 km/h)
- Tire Pressure Monitoring System (TPMS)
- Headlight dipped beam (with switch-off delay)
- Selective driving mode switch (including 3 selectable driving modes: Normal, Sport and Eco)
- Seats: Passenger seat height-adjustable, manually (with adjustable lumbar support)
- Seats: Map grid on the driver's and front passenger's seat backrests
- Start-stop system
- Carpet floor mats in the front
- Lashing eyes in the luggage compartment
- Electronic immobilizer



- Warning system for unfastened seat belts for the 1st and 2nd rows of seats

- Central locking with remote control and remote luggage compartment release

Extra equipment

- Package: Winter (heated windscreen - heated steering wheel - individually and variably heated front seats)
- Paint finish: Frozen White
- Side windows from the 2nd row of seats and rear window, dark tinted.
- Tires: 6.5 J x 16 alloy wheels (4) with 205/60 R16 tires (in 6x2-spoke design)

- Package: Driver Assistance Package II (Drive Assist Intelligent adaptive cruise control Lane keeping assist Traffic jam assist with Stop&Go Traffic sign recognition Wrong-way driver warning radio Evasive steering assist Distance display and distance warning Driver drowsiness detection High beam assist (in conjunction with adaptive LED matrix headlights with glare-free high beam assist) Blind spot assist with cross traffic alert including emergency braking function (when reversing out of parking spaces) and trailer recognition Rear view camera with split view Electrically folding exterior mirrors with surround view)

Brief expert findings

Documents submitted	At the time of the inspection, the vehicle registration certificate Part 2 (title) was available, but the vehicle registration certificate Part 1 (document) was not. (Copy)
VIN comparison	The vehicle identification number (VIN) was read from the vehicle and its conformity with the submitted documents was confirmed by the undersigned during the inspection.
Inspection	The inspection conditions were sufficient for the assessment of the vehicle. Lifting equipment and/or a pit were available for examining the vehicle.
Test drive	No test drive/shunting maneuver was carried out during the inspection of the vehicle.
Engine function test	An engine test run was performed.

Value reducing factors

No.	Component group	Description
1	Interior	Interior (Tierhaare) - Soiled - Clean
2	Rear bumper	Rear bumper (Verladebereich) - Scratch(es) - Smart repair
3	Front bumper	Front bumper - Deformed - Replace

Wear and tear

No.	Component group	Description
1	Body	Body - Scratch(es) - No deduction

The vehicle shows signs of wear and tear commensurate with its age and use.

Order/Scope of Order

An order was placed to prepare a sales report for the described vehicle. This report includes the following:

- Description of key vehicle information
- Documentation of equipment features
(*Delivery by third-party service providers*)
- Documentation of damage, defects, missing parts
- Documentation of prior damage, unrepaired prior damage, repainting
- A brief visual or functional inspection of the equipment details, if possible.
(*Functional testing of driver assistance systems is not included in the scope of services!*)
- a photographic documentation of the vehicle



Basis for the order

This product is based on the guidelines for vehicle returns and valuations published by Alphabet Fleet GmbH. The expert makes the specific findings in each individual case objectively, within the framework of the prescribed standards, based on their own expertise.

The vehicle inspection takes place in a fully assembled, unassembled state.

Damage or defects that can only be detected during disassembly/diagnostic work or through further investigation remain within the realm of prognostic risk. An increased risk exists due to concealed defects caused by fraudulent misrepresentation and which were not identifiable by the expert.

Damage or defects resulting from normal use or wear and tear of the vehicle will be accepted in accordance with the applicable standard.

There was no explicit identification or monetary consideration of the expected features within the product.

Features which, in their nature and extent, slightly exceed normal use but do not constitute unacceptable damage, will be documented and indicated as signs of wear, if applicable.

Damage or defects that, according to the applicable standard, can no longer be attributed to normal use or wear and tear are listed under "Value Reducing Factors" in the product description.

Depending on the product specification, a monetary ID can be provided. If this takes place, the costs can be 100% d or pro rata depending on the vehicle's age and mileage.

Previous damages

No apparent prior damage that had been repaired could be found on the vehicle.



Figure 1: Diagonal front (left)



Figure 2: Diagonal front (right)



Figure 3: Diagonal rear (left)



Figure 4: Diagonal rear (right)



Figure 5: Interior - front



Figure 6: Interior - rear



Figure 7: Instrument cluster



Figure 8: Instrument panel



Figure 9: Interior 360° view



Figure 10: Cargo area



Figure 11: VIN



Figure 12: Mounted tyres

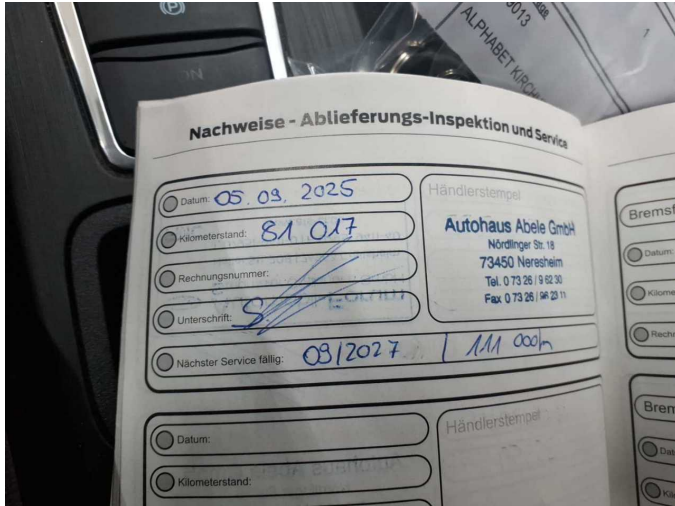


Figure 13: Documents

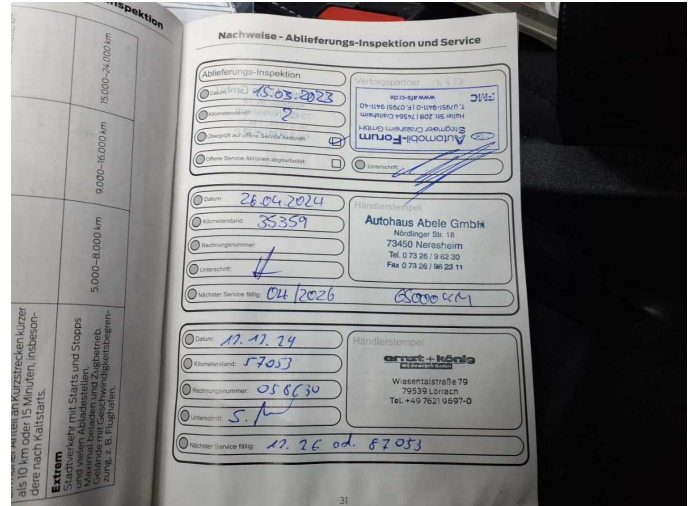


Figure 14: Documents

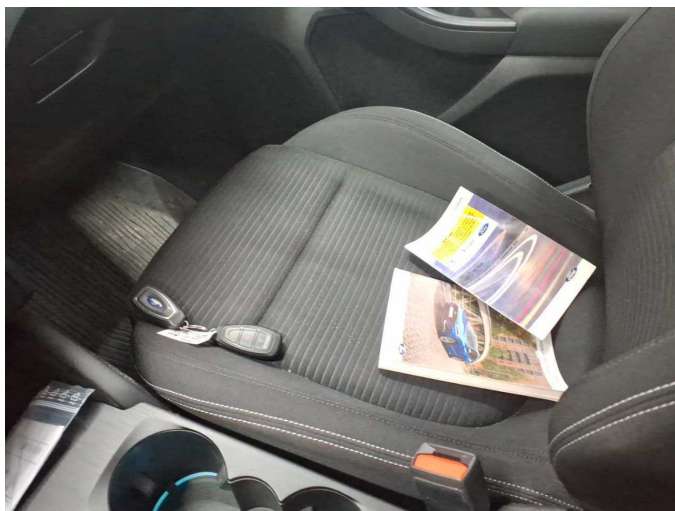


Figure 15: Documents

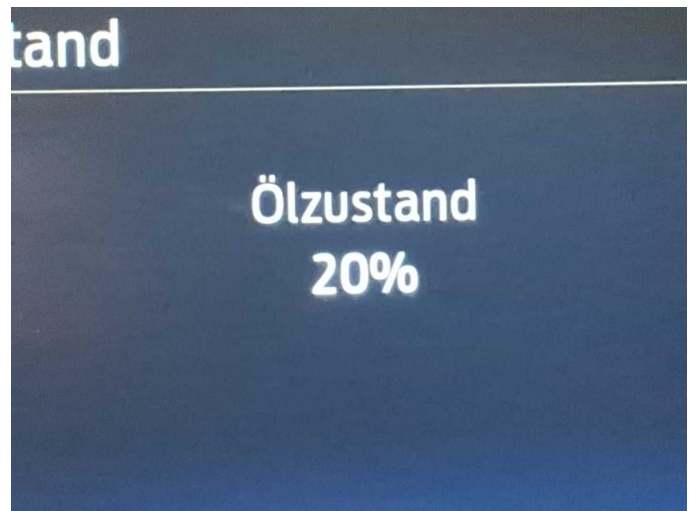


Figure 16: Documents



Figure 17: Navigation



Figure 18: Misc.



Figure 19: Misc.



Figure 20: Misc.



Figure 21: Misc.



Figure 22: Misc.



Figure 23: Misc.



Figure 24: Misc.



Figure 25: Misc.



Figure 26: Misc.



Figure 27: Misc.



Figure 28: Misc.



Damage 1: Interior: Interior (Tierhaare) - Soiled - Clean



Damage 1: Interior: Interior (Tierhaare) - Soiled - Clean



Damage 1: Interior: Interior (Tierhaare) - Soiled - Clean



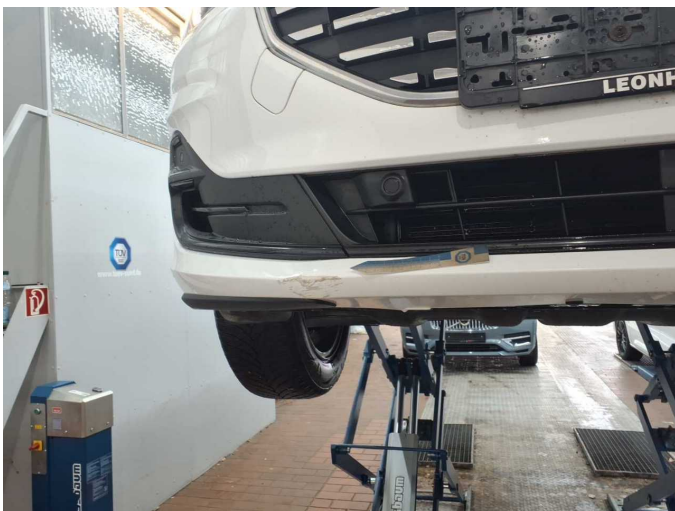
Damage 1: Interior: Interior (Tierhaare) - Soiled - Clean



Damage 2: Rear bumper: Rear bumper (Verladebereich) - Scratch(es) - Smart repair



Damage 2: Rear bumper: Rear bumper (Verladebereich) - Scratch(es) - Smart repair



Damage 3: Front bumper: Front bumper - Deformed - Replace



Damage 3: Front bumper: Front bumper - Deformed - Replace



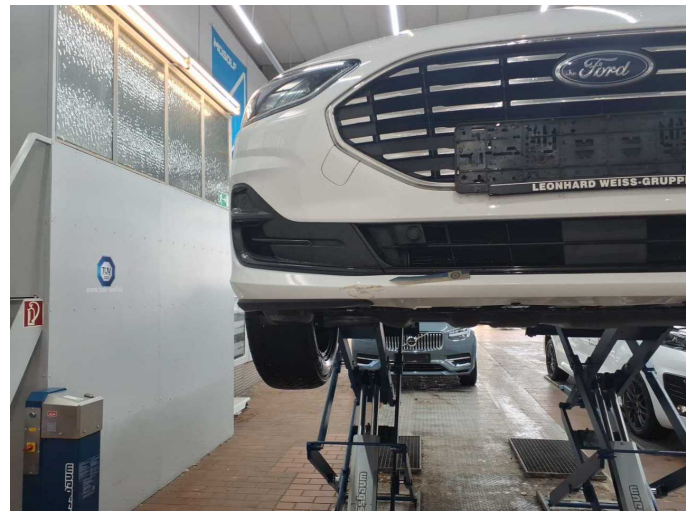
Damage 3: Front bumper: Front bumper - Deformed - Replace



Damage 3: Front bumper: Front bumper - Deformed - Replace



Damage 3: Front bumper: Front bumper - Deformed - Replace



Damage 3: Front bumper: Front bumper - Deformed - Replace



Wartungshistorie

(gemäß Auftraggeber Informationen)

Fahrgestellnummer: WF0PXXGCHPPD63471
Hersteller / Modell: FORD FORD Focus Turnier 1.5 EcoBlue Start-Stopp-System Aut.
TITANIUM

Datum	KM-Stand	Beschreibung
11.09.2025	81.017	Motoröl b. Wartung; Ölfilter ern; Regelwartungsdienst; Wartung Sonstiges
12.12.2024	51.253	Kraftstofffilter ern; Luftfiltereinsatz ern; Motoröl b. Wartung; Ölfilter ern; Regelwartungsdienst; Wartung Sonstiges
26.04.2024	35.359	Motoröl b. Wartung; Ölfilter ern; Regelwartungsdienst; Wartung Sonstiges