

Expertise

Protocol number: 46347090
Order No. / Reference: 26488892
Inspection date: 6 Jul 2026

Manufacturer: Ford

Model: Mondeo Turnier 2.0 EcoBlue Aut. Titanium

VIN: WF0FXXWPCFNY62845



Vehicle details

Manufacturer / Type / Model / Equipment

Ford Mondeo Turnier 2.0 EcoBlue Aut. Titanium

Vehicle Identification number WF0FXXWPCFNY62845

Mileage (Read) 129,656 km

First registration 6 Apr 2022

Number of holders 1

Power / Engine displacement 110 kw / 1,995 ccm

Fuel type / Cylinder Diesel / 4

Gearbox / Number of gears Automatic / 8

Type of drive Front drive

Type of vehicle Station wagon

Colour / colour code Magnetic-Grau (Metallic)

Doors / Seats 5 / 5

Upholstery type Cloth

Colour of upholstery Anthracite-Black



Vehicle details

Maintenance booklet / proof	digital proof / complete	Next maintenance in	36 %
Last service on / at	10/2025 at 115,833 km		
Key is / should be	2 / 2	FZG documents	ZB#2 (B) was available (copy), ZB#1 (S) was not available.
		Letter No.	GH425803
Previous damage / Accident	Detectable	Repainting	Detectable
Inspection conditions	sufficient	Lifting equipment / pit	yes
Test drive	Not performed	Engine function test	Performed
Manufacturer key number/ type code number	8566 / BJB 00111		
Emission standard	EURO6;WLTP;AP;PI/CI; M, N1 I	fine dust sticker	
Permitted total weight	2,330 kg	Empty weight	

Tyres

Mounted tyres				
#	Tyre size	Type of tyre	Manufacturer	Tread depth
1)	215/55 R17 98W	Summer tyres on Light alloy	Goodyear	4mm / 4mm
2)	215/55 R17 98W	Summer tyres on Light alloy	Goodyear	4mm / 4mm

Replacement				
Typ	Tyre size	Type of tyre	Manufacturer	Tread depth
	Tirefit	Expiration date 02/2026		

Legend: Tread depth information for the left tire is listed first, for the right tire it is listed second on the axle in the direction of travel.



Equipment

Standard equipment

- Activated carbon filter
- Anti-lock braking system (ABS) with electronic brake force distribution (EBD)
- Attachment points for safety partition grilles
- Tires: 7 J x 17 alloy wheels (4) with 215/55 R 17 tires
- Tires: Tire pressure monitoring system (TPMS)
- third brake light
- headliner, light
- Diesel particulate filter (DPF)
- Front door sill trim
- Electronic Safety and Stability Program (ESP)
- Lane keeping assist including lane keeping assist and driver fatigue warning
- High Beam Assist
- Ford Easy Fuel
- FordPass Connect including eCall, live traffic information and Wi-Fi hotspot
- Luggage compartment lighting
- Transmission: 8-speed automatic transmission
- rear window wiper
- Interior mirror automatically dimming
- Isofix bracket
- Air conditioning with automatic temperature control
- Front headrests, 4-way height and tilt adjustable
- Steering wheel: Multifunction leather steering wheel
- Reading lights front and rear
- MyKey key system (individually programmable second key)
- Fog light
- Emergency brake light
- Pre-Collision Assist
- Rear seat backrest, foldable, 60:40 split
- Headlight dipped beam with switch-off delay including "greeting function"
- Electromechanical speed-dependent power steering
- Seats: Map pocket on the back of the front passenger seat
- Seats: Map pocket on the driver's seat backrest
- Seats: Front seats can be heated individually and variably.
- 12-volt power outlet in the luggage compartment
- Front bumper painted in body color
- Carpet floor mats front and rear
- Lashing eyes in the luggage compartment floor
- Immobiliser
- Central locking
- Ambient lighting in the front, including door storage compartment, front door handle and footwell lighting.
- Exterior mirrors in body color, driver and passenger side, electrically adjustable and heated
- Tires: Tire repair kit
- Hill start assist
- Chrome decor
- Roof rails, aluminum look
- Tachometer
- Electronic Shifter
- Driver information system - 25.4 cm color display (digital/analog)
- Electric windows front and rear
- Electronic parking brake
- Ford Power Start function
- Heated windshield
- luggage compartment cover
- Cruise control system with intelligent speed limiter
- Back window, heater
- Interior lighting with delay circuit
- Intelligent security system
- Electric child safety lock
- Rear headrests (3), height adjustable
- LED design daytime running lights in the fog lights
- Adjustable steering column
- Front center console with padded armrests
- Navigation: Ford Navigation including Ford SYNC 3 with AppLink, 8" touchscreen (20.3 cm screen) with DAB/DAB+
- Front and rear parking pilot system
- LED taillights
- Windscreen wipers with rain sensor
- Headlight assistant with day/night sensor
- Side skirts painted in car color
- Seats: Driver and passenger seats, 4-way manually adjustable
- Seats: Sports seats with fabric upholstery
- Start-stop system
- 12-volt socket in the front interior
- Daytime running light
- Traffic sign recognition system
- Warning system for unfastened seat belts in the front and second row of seats
- Cigarette lighter



Extra equipment

- Electrically swiveling trailer hitch (ESP trailer stabilization - continuous power supply - switched power supply - hill start assist)
- Side windows from the 2nd row of seats and rear window, dark tinted.
- Safety partition net behind the 2nd row of seats for the luggage compartment
- Seats: Ford ergonomic seat (driver's seat 18-way adjustable: - length, height and tilt of the seat - extendable thigh support - adjustable backrest - lumbar support 4-way electrically adjustable - passenger seat, 4-way manually adjustable, incl. manually adjustable lumbar support)
- Fuel-operated auxiliary heater (including remote control)
- Paint finish: Magnetic Grey Metallic
- Package: Business 2 (Automatic) (Sony Navigation including Ford SYNC 3 with AppLink and 8" (20.3 cm) touchscreen with Premium Sound System, 12 Sony speakers and DAB/DAB+ radio, reversing camera, parking assistant with parallel and perpendicular parking sensors including front and rear parking sensors, blind spot information system including cross traffic alert and dynamic distance detection, power tailgate, adaptive LED headlights, adaptive LED headlights with automatic headlight range control, LED daytime running lights, adaptive cruise control, traffic jam assist with stop & go function)

Brief expert findings

Documents submitted	At the time of the inspection, the vehicle registration certificate Part 2 (title) was available, but the vehicle registration certificate Part 1 (document) was not. (Copy)
VIN comparison	The vehicle identification number (VIN) was read from the vehicle and its conformity with the submitted documents was confirmed by the undersigned during the inspection.
Inspection	The inspection conditions were sufficient for the assessment of the vehicle. Lifting equipment and/or a pit were available for examining the vehicle.
Test drive	No test drive/shunting maneuver was carried out during the inspection of the vehicle.
Engine function test	An engine test run was performed.

Value reducing factors

No.	Component group	Description
1	Equipment	Tirefit filler - Expired - Replace
2	Door - front left side	Door - Scratch(es) - Smart repair
3	Seat - front	Seat cover - left side - Worn - Smart repair
4	Engine	Engine - Leaking - Diagnosed and repair if necessary
5	Interior	Interior (Hundegeruch) - Odour - Ozone treatment
6	Wheel / tyres	Alloy rim - rear left side - Scratch(es) - Loss in value
7	Rear bumper	Rear bumper - Scratch(es) - Paint
8	Front bumper	Front bumper - Scratch(es) - Paint

Wear and tear

No.	Component group	Description
1	Body	Underbody panelling - Scratch(es) - No deduction
2	Bonnet	Bonnet - Stone chips - No deduction
3	Vehicle glazing	Windscreen - Stone chips - No deduction
4	Interior	Interior - Scratch(es) - No deduction
5	Door - rear left side	Door - dent(s) - No deduction

The vehicle shows signs of wear and tear commensurate with its age and use.



Previous damages

No.	Previous damage	Extent of damage (Net)
1	Side right, Provided by user / customer, from 10 Apr 2026	3.335,94 €

Repainting

No. Repainting

1	Mudguard - right side, Door - front right side, Professionally carried out, Invoice of repair done Non-existent
---	---

Order/Scope of Order

An order was placed to prepare a sales report for the described vehicle. This report includes the following:

- Description of key vehicle information
- Documentation of equipment features
(*Delivery by third-party service providers*)
- Documentation of damage, defects, missing parts
- Documentation of prior damage, unrepaired prior damage, repainting
- A brief visual or functional inspection of the equipment details, if possible.
(*Functional testing of driver assistance systems is not included in the scope of services!*)
- a photographic documentation of the vehicle

Basis for the order

This product is based on the guidelines for vehicle returns and valuations published by Alphabet Fleet GmbH. The expert makes the specific findings in each individual case objectively, within the framework of the prescribed standards, based on their own expertise.

The vehicle inspection takes place in a fully assembled, unassembled state.

Damage or defects that can only be detected during disassembly/diagnostic work or through further investigation remain within the realm of prognostic risk. An increased risk exists due to concealed defects caused by fraudulent misrepresentation and which were not identifiable by the expert.

Damage or defects resulting from normal use or wear and tear of the vehicle will be accepted in accordance with the applicable standard.

There was no explicit identification or monetary consideration of the expected features within the product.

Features which, in their nature and extent, slightly exceed normal use but do not constitute unacceptable damage, will be documented and indicated as signs of wear, if applicable.

Damage or defects that, according to the applicable standard, can no longer be attributed to normal use or wear and tear are listed under "Value Reducing Factors" in the product description.

Depending on the product specification, a monetary ID can be provided. If this takes place, the costs can be 100% d or pro rata depending on the vehicle's age and mileage.

Previous damages

According to available information previous damages were repaired at the vehicle. Traces of repairs, which allow conclusions about the area of repair, were not recognizable during the inspection.

Comments

Wartungshistorie gemäß Auftraggeber Informationen.



Figure 1: Diagonal front (left)



Figure 2: Diagonal front (right)



Figure 3: Diagonal rear (left)



Figure 4: Diagonal rear (right)



Figure 5: Interior - front



Figure 6: Interior - rear



Figure 7: Instrument cluster



Figure 8: Instrument panel



Figure 9: Interior 360° view



Figure 10: Cargo area



Figure 11: VIN



Figure 12: Mounted tyres



Figure 13: Documents

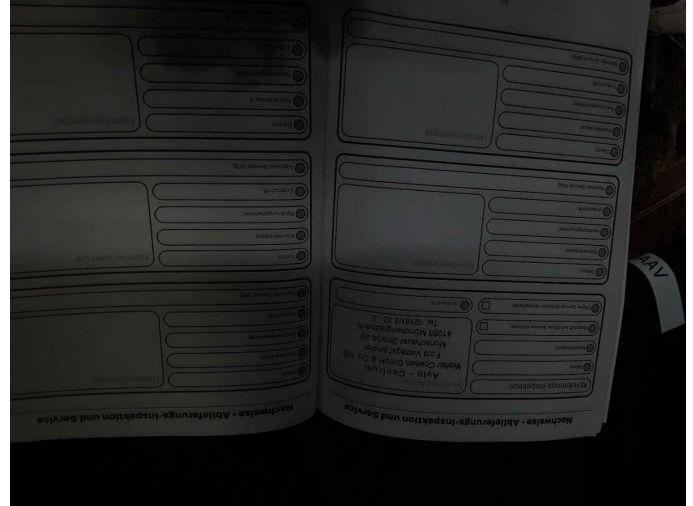


Figure 14: Documents

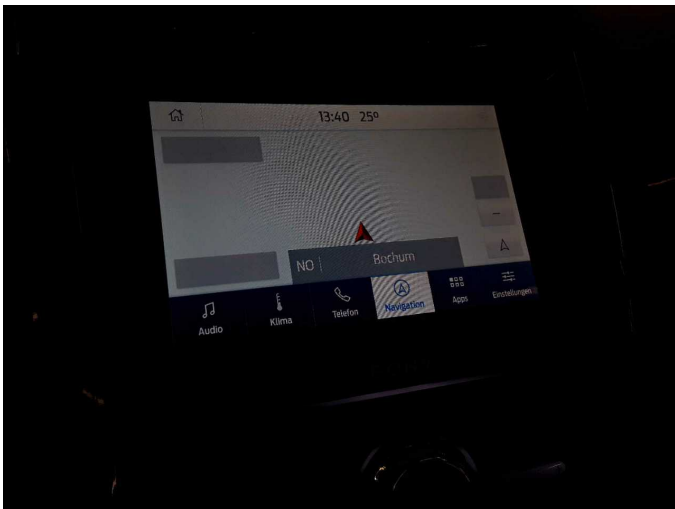


Figure 15: Navigation

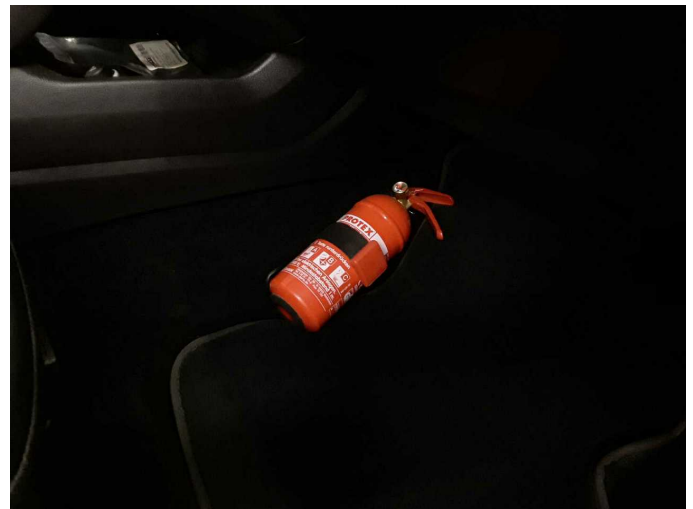


Figure 16: Misc.



Figure 17: Misc.



Figure 18: Misc.



Figure 19: Misc.



Figure 20: Misc.



Figure 21: Misc.



Figure 22: Misc.



Figure 23: Misc.



Figure 24: Misc.



Figure 25: Misc.



Figure 26: Misc.



Figure 27: Misc.



Figure 28: Misc.



Figure 29: Misc.



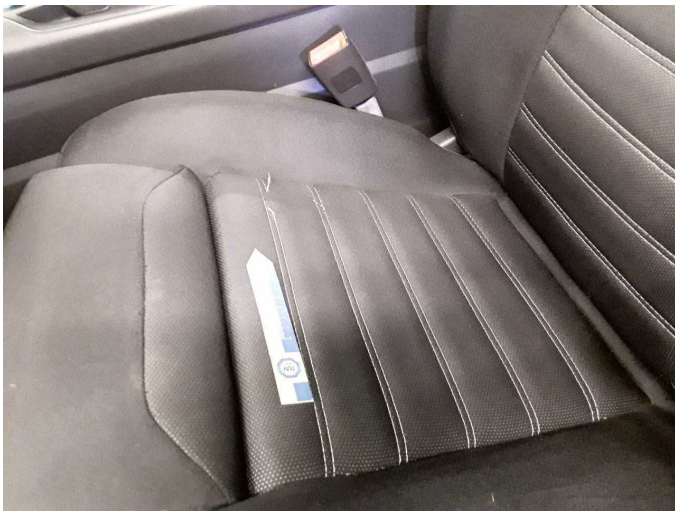
Damage 1: Equipment: Tirefit filler - Expired - Replace



Damage 2: Door - front left side: Door - Scratch(es) - Smart repair



Damage 2: Door - front left side: Door - Scratch(es) - Smart repair



Damage 3: Seat - front: Seat cover - left side - Worn - Smart repair



Damage 3: Seat - front: Seat cover - left side - Worn - Smart repair



Damage 4: Engine: Engine - Leaking - Diagnosed and repair if necessary



Damage 6: Wheel / tyres: Alloy rim - rear left side - Scratch(es) - Loss in value



Damage 6: Wheel / tyres: Alloy rim - rear left side - Scratch(es) - Loss in value



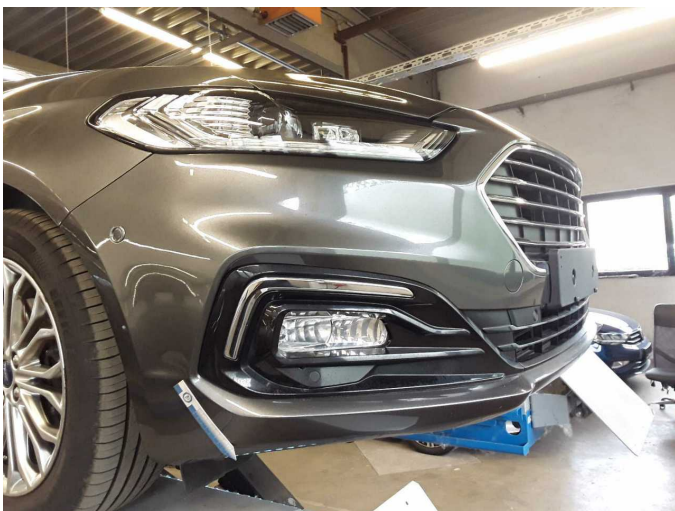
Damage 7: Rear bumper: Rear bumper - Scratch(es) - Paint



Damage 7: Rear bumper: Rear bumper - Scratch(es) - Paint



Damage 7: Rear bumper: Rear bumper - Scratch(es) - Paint



Damage 8: Front bumper: Front bumper - Scratch(es) - Paint



Damage 8: Front bumper: Front bumper - Scratch(es) - Paint



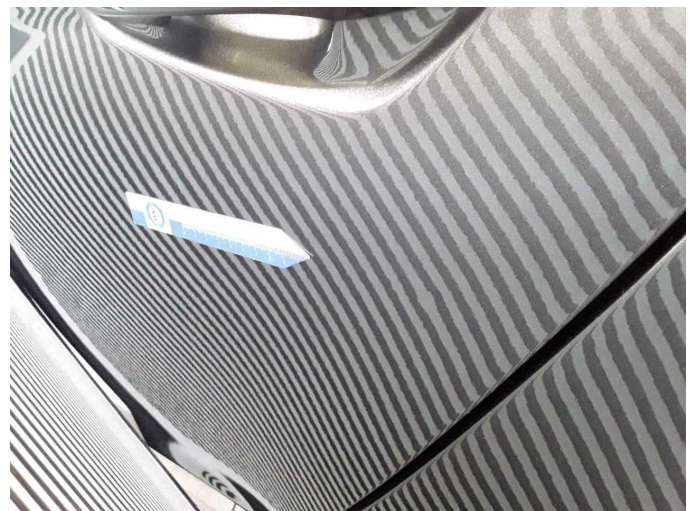
Damage 8: Front bumper: Front bumper - Scratch(es) - Paint



Damage 8: Front bumper: Front bumper - Scratch(es) - Paint



Wear and tear 5: Door - rear left side: Door - dent(s) - No deduction



Wear and tear 5: Door - rear left side: Door - dent(s) - No deduction



Repainting 1: Mudguard - right side, Door - front right side



Repainting 1: Mudguard - right side, Door - front right side



Repainting 1: Mudguard - right side, Door - front right side



Repainting 1: Mudguard - right side, Door - front right side



Repainting 1: Mudguard - right side, Door - front right side



Repainting 1: Mudguard - right side, Door - front right side



Wartungshistorie

(gemäß Auftraggeber Informationen)

Fahrgestellnummer: WF0FXXWPCFNY62845

Hersteller / Modell: FORD FORD Mondeo Turnier 2.0 EcoBlue Aut. Titanium

Datum	KM-Stand	Beschreibung
30.03.2026	129.465	Systemtest/Eigendiagnose
20.10.2025	115.833	Bremse Sonstiges; Bremsklötze hinten; Bremsklötze vorne; Bremsscheiben + Klötze h; Bremsscheiben + Klötze v; Bremsscheiben hinten; Bremsscheiben vorne; Kraftstofffilter ern; Luftfiltereinsatz ern; Motoröl b. Wartung; Ölfilter ern; Regelwartungsdienst; Wartung Sonstiges
09.04.2025	101.583	AU
18.02.2025	97.168	Batterie ern; Systemtest/Eigendiagnose; Wartung Sonstiges
07.11.2024	86.725	Bremsflüssigkeit; Bremsflüssigkeit ern; Motoröl b. Wartung; Ölfilter ern; Regelwartungsdienst; Wartung Sonstiges
11.12.2023	56.993	Bremsinspektion vo + hi; Bremse Sonstiges; Bremsklötze hinten; Bremsklötze vorne; Kraftstofffilter ern; Luftfiltereinsatz ern; Motoröl b. Wartung; Ölfilter ern; Regelwartungsdienst; Wartung Sonstiges
03.03.2023	29.200	Motoröl b. Wartung; Ölfilter ern; Regelwartungsdienst; Wartung Sonstiges