

Expertise

Protocol number: 45551025
Order No. / Reference: 26301665
Inspection date: 15 May 2026

Manufacturer: Volkswagen

Model: Tiguan 2.0 TDI SCR DSG Elegance

VIN: WVGZZZ5NZNW511534



Vehicle details

Manufacturer / Type / Model / Equipment

Volkswagen Tiguan 2.0 TDI SCR DSG Elegance

Vehicle Identification number	WVGZZZ5NZNW511534
Mileage (Read)	105,537 km
First registration	13 Jan 2022
Number of holders	1
Next periodical technical inspection (Report on hand)	01/2027

Power / Engine displacement	110 kw / 1,968 ccm
------------------------------------	--------------------

Fuel type / Cylinder	Diesel / 4
-----------------------------	------------

Gearbox / Number of gears	Automatic / 7
----------------------------------	---------------

Type of drive	Front drive
----------------------	-------------

Type of vehicle	SUV
------------------------	-----

Colour / colour code	Delfingrau Metallic
-----------------------------	---------------------

Doors / Seats	5 / 5
----------------------	-------

Upholstery type	Cloth
------------------------	-------

Colour of upholstery	Black-Dark grey
-----------------------------	-----------------

Re-import	no
------------------	----

Vehicle with smoke odor	no
--------------------------------	----

readiness to drive	Roadworthy
---------------------------	------------



Vehicle details			
Maintenance booklet / proof	digital proof / complete	Next maintenance in	7,500 km
Last service on / at	07/2025 at 85,177 km		
Key is / should be	2 / 2	FZG documents	ZB#2 (B) was available (copy), ZB#1 (S) was not available.
		Letter No.	GF471541
Previous damage / Accident	None detectable	Repainting	None detectable
Inspection conditions	sufficient	Lifting equipment / pit	yes
Test drive	Not performed	Engine function test	Performed
readiness to drive	Roadworthy		
Manufacturer key number/ type code number	0603 / BZG 20621		
Emission standard	EURO6;WLTP;AP;PI/CI; M, N1 I	fine dust sticker	
Permitted total weight	2,170 kg	Empty weight	

Tyres

Mounted tyres				
#	Tyre size	Type of tyre	Manufacturer	Tread depth
1)	235/55 R18 100V	Summer tyres on Light alloy	Continental	3mm / 3mm
2)	235/55 R18 100V	Summer tyres on Light alloy	Continental	5mm / 5mm
Additional tyres				
#	Tyre size	Type of tyre	Manufacturer	Tread depth
1)	215/65 R17 99H	Winter tyres on Light alloy	Pirelli	6mm / 6mm
2)	215/65 R17 99H	Winter tyres on Light alloy	Pirelli	6mm / 6mm

Legend: Tread depth information for the left tire is listed first, for the right tire it is listed second on the axle in the direction of travel.



Equipment

Standard equipment

- Airbag for driver and front passenger including knee airbag on the driver's side
- App-Connect including App-Connect Wireless for Apple CarPlay and Android Auto
- third brake light
- Chrome applications on mirror adjustment switches, window regulator switches, door pull handles
- Display: Digital Cockpit Pro, multicolor, various selectable info profiles
- Electronic parking brake including auto-hold function
- Automatic headlight control, with LED daytime running lights
- Windscreen made of laminated safety glass, heat and sound insulating
- Tailgate with electric opening and closing, adjustable opening angle
- Interior mirror automatically dimming
- LED license plate lighting
- Combination instrument cluster with electronic speedometer
- Rear headrests (3)
- Paint finish: Solid
- LED matrix headlights (LED matrix headlights with LED daytime running lights and cornering lights - dynamic headlight range control, with dynamic cornering lights - bad weather lights and turning lights)
- Non-smoking version
- Package: Ambient lighting package (ambient lighting version 2 - chrome applications on mirror adjustment and window regulator switches, door pull handles; interior door controls in matt chrome - decorative inserts for instrument panel and front door trim - illuminated aluminum door sill trims at the front)
- Rain sensor
- Wheels: AirStop tires 235/55 R 18, rolling resistance class A
- electromechanical power steering
- Seats: Front passenger seat backrest folds down completely
- Lane keeping assistant "Lane Assist"
- 12-volt socket
- Bumpers in body color
- First aid kit, warning triangle and high-visibility vest
- Green thermal insulation glazing, sides and rear
- Airbag: Head airbag system for front and rear passengers including front side airbags
- Adaptive Cruise Control ACC (DSG) (Adaptive Cruise Control ACC "stop & go", with speed limiter - Emergency Brake Assist "Front Assist" (for ACC up to 210 km/h))
- Silver anodized roof rails
- Diesel particulate filter
- Tachometer
- Parking assistance
- Electronic Stability Program with counter-steering support
- Electric windows front and rear
- High beam control Light Assist
- Pedestrian detection
- Transmission: 7-speed DSG
- Rear window heated
- rear window wiper
- ISOFIX mounting points, also for i-Size child car seats
- Air conditioning system "Air Care Climatronic" (with active combination filter, rear controls and 3-zone temperature control)
- Front headrests
- LED reading lights, 2 in the front and 2 in the rear
- Light in the front footwell
- Front center armrest adjustable in height and length, with storage box and rear air vents
- Fatigue detection
- Emergency call service
- Package: Chrome package (chrome trim on the side windows - silver anodized roof rails)
- Package: Winter (front windshield washer nozzles automatically heated - front seats heated)
- Padding: Microfleece
- Radio accessories: 8 speakers
- Tire pressure monitoring system
- Gearshift knob in leather
- Drawers under the front seats
- Seat belts: Three-point automatic seat belts at the front with height adjustment and belt tensioner
- Seats: Rear bench seat asymmetrically split
- Start-stop system with brake energy recuperation
- Power outlet: 2 USB-C ports on the front
- Textile floor mats front and rear
- Electronic immobilizer
- Central locking without safe locking, with remote control and 2 remote keys



Extra equipment

- Foldable towbar (electric release)
- Chassis: Adaptive chassis control DCC (including driving profile selection)
- Paint finish: Metallic
- Navigation system "Discover Media" incl. "Streaming & Internet" (20.3 cm TFT touchscreen - FM radio reception - Dual tuner with phase diversity for best possible radio reception - Radio Data System (RDS) - Radio station logos - MP3 playback - USB-C interface with Apple compatibility - 4 x 20 watt output power - Map with 2D display - 3-band sound control - Telephone interface - Traffic sign recognition - Points of interest - DAB+ digital radio reception)
- Windows: Rear side windows and rear window tinted
- Electrically adjustable, folding, and heated exterior mirrors, ambient lighting, passenger-side mirror lowering function
- Wirelessly heated windshield (infrared-reflective, noise-reducing)
- Package: Business Premium (DSG) (App-Connect incl. App-Connect Wireless for Apple CarPlay and Android Auto - Leather multifunction steering wheel, heated, with shift paddles - Automatically heated front windscreen washer nozzles - Voice control - "Comfort" telephone interface with inductive charging function - Heated front seats)
- Wheels: Light alloy (4) "Nice" 7 J x 18 (in black, polished surface - Airstop tires 235/55 R 18, rolling resistance class A - wheel locks with enhanced theft protection)
- Seats: ergoActive front seats (ergoActive front seats height-adjustable, seat and backrest tilt adjustable, thigh support longitudinally adjustable - lumbar support front electrically adjustable and with massage function)

Brief expert findings

Documents submitted	At the time of the inspection, the vehicle registration certificate Part 2 (title) was available, but the vehicle registration certificate Part 1 (document) was not. (Copy)
VIN comparison	The vehicle identification number (VIN) was read from the vehicle and its conformity with the submitted documents was confirmed by the undersigned during the inspection.
Inspection	The inspection conditions were sufficient for the assessment of the vehicle. Lifting equipment and/or a pit were available for examining the vehicle.
Test drive	No test drive/shunting maneuver was carried out during the inspection of the vehicle.
Engine function test	An engine test run was performed.
readiness to drive	The vehicle was roadworthy at the time of inspection.

Value reducing factors

No.	Component group	Description
1	Door - rear left side	Door - dent(s) - Smart repair
2	Trim / covers	Trim / covers (Stoßfänger hinten unten) - Scratch(es) - Smart repair
3	Wheel / tyres	Alloy rim - front right side - Scratch(es) - Loss in value
4	Trim / covers	Door trim - rear right side - Deformed - Replace
5	Bonnet	Bonnet - Dent / paintcoat damage - Repair and paint
6	Vehicle glazing	Windscreen with lane departure assistant (Steinschlag + Kratzer) - Unprofessionally repaired - Replace

Wear and tear

No.	Component group	Description
1	Door - front left side	Door - dent(s) - No deduction
2	Rear bumper	Bumper with Parktronic (Ladekante) - Scratch(es) - No deduction

The vehicle shows signs of wear and tear commensurate with its age and use.



Order/Scope of Order

An order was placed to prepare a sales report for the described vehicle. This report includes the following:

- Description of key vehicle information
- Documentation of equipment features
(Delivery by third-party service providers)
- Documentation of damage, defects, missing parts
- Documentation of prior damage, unrepaired prior damage, repainting
- A brief visual or functional inspection of the equipment details, if possible.
(Functional testing of driver assistance systems is not included in the scope of services!)
- a photographic documentation of the vehicle

Basis for the order

This product is based on the guidelines for vehicle returns and valuations published by Alphabet Fleet GmbH. The expert makes the specific findings in each individual case objectively, within the framework of the prescribed standards, based on their own expertise.

The vehicle inspection takes place in a fully assembled, unassembled state.

Damage or defects that can only be detected during disassembly/diagnostic work or through further investigation remain within the realm of prognostic risk. An increased risk exists due to concealed defects caused by fraudulent misrepresentation and which were not identifiable by the expert.

Damage or defects resulting from normal use or wear and tear of the vehicle will be accepted in accordance with the applicable standard.

There was no explicit identification or monetary consideration of the expected features within the product.

Features which, in their nature and extent, slightly exceed normal use but do not constitute unacceptable damage, will be documented and indicated as signs of wear, if applicable.

Damage or defects that, according to the applicable standard, can no longer be attributed to normal use or wear and tear are listed under "Value Reducing Factors" in the product description.

Depending on the product specification, a monetary ID can be provided. If this takes place, the costs can be 100% or pro rata depending on the vehicle's age and mileage.

Previous damages

No apparent prior damage that had been repaired could be found on the vehicle.

Comments

- Winterradsatz ist kein Bestandteil des Auslieferungsumfangs.



Figure 1: Diagonal front (left)



Figure 2: Diagonal front (right)



Figure 3: Diagonal rear (left)



Figure 4: Diagonal rear (right)

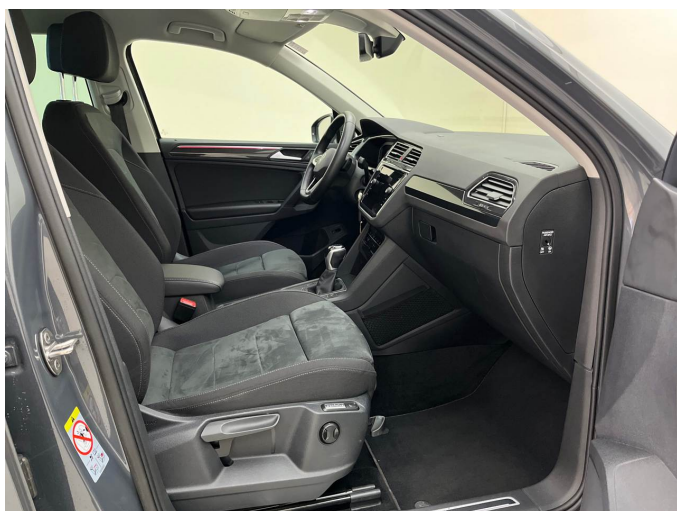


Figure 5: Interior - front

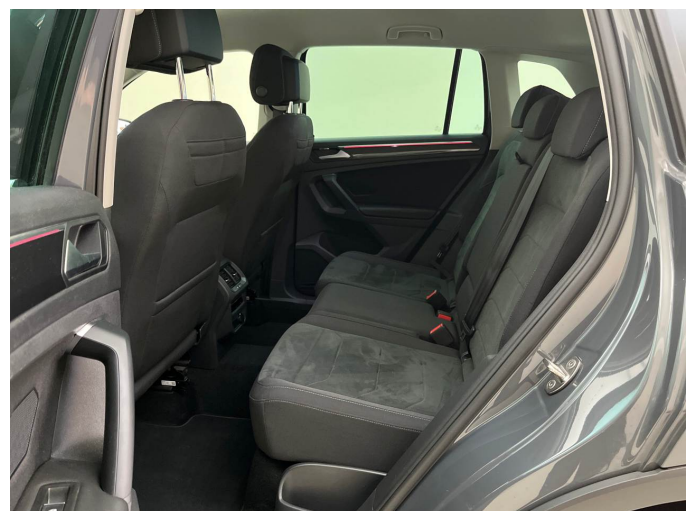


Figure 6: Interior - rear



Figure 7: Instrument cluster



Figure 8: Instrument panel



Figure 9: Interior 360° view



Figure 10: Cargo area

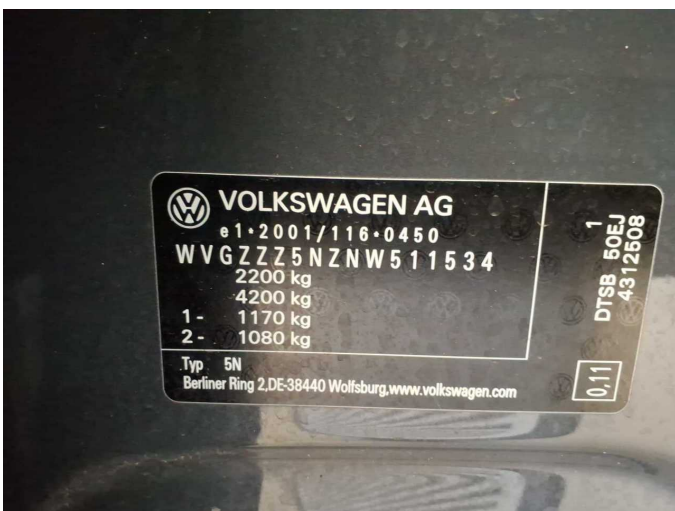


Figure 11: VIN



Figure 12: Mounted tyres

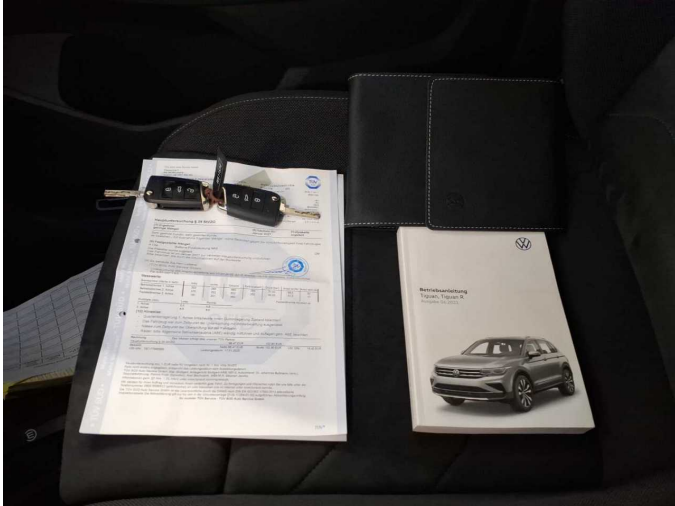


Figure 13: Documents



Figure 14: Documents

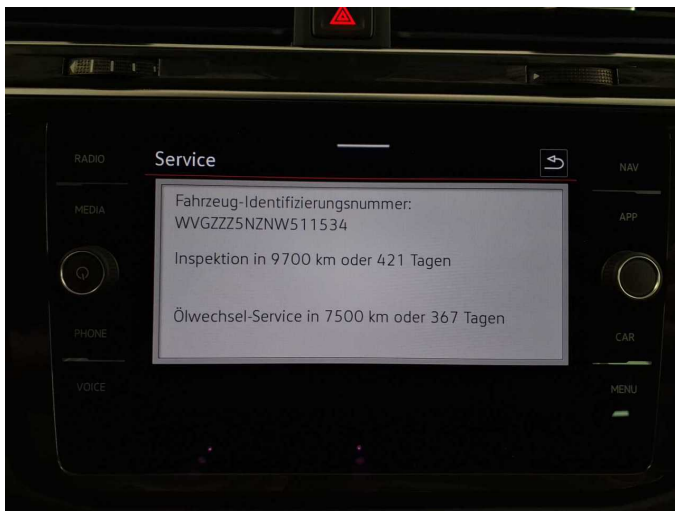


Figure 15: Documents



Figure 16: Additional tyres



Figure 17: Navigation



Figure 18: Misc.



Figure 19: Misc.



Figure 20: Misc.



Figure 21: Misc.

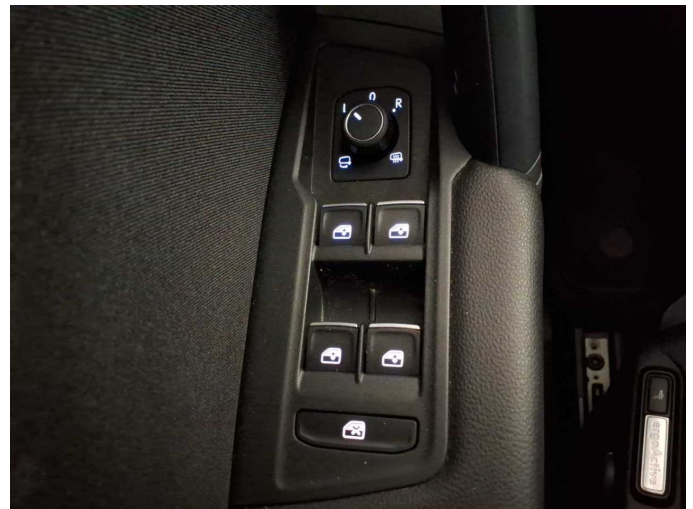


Figure 22: Misc.



Figure 23: Misc.



Figure 24: Misc.



Figure 25: Misc.



Figure 26: Misc.

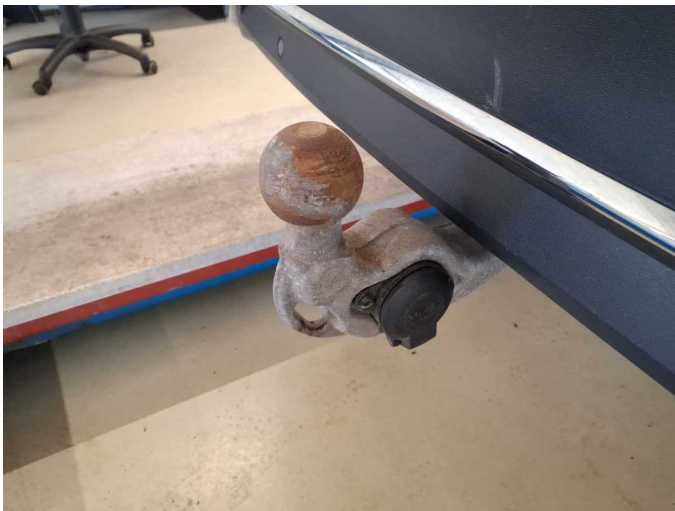


Figure 27: Misc.



Figure 28: Misc.



Figure 29: Misc.



Figure 30: Misc.



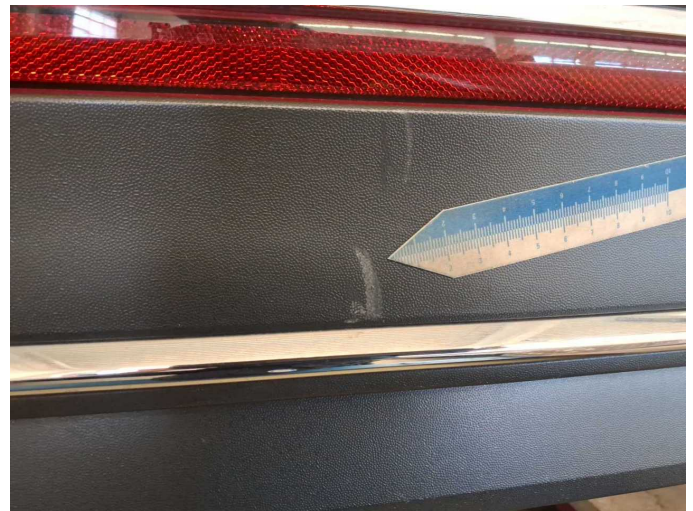
Damage 1: Door - rear left side: Door - dent(s) - Smart repair



Damage 1: Door - rear left side: Door - dent(s) - Smart repair



Damage 2: Trim / covers: Trim / covers (Stossfänger hinten unten) - Scratch(es) - Smart repair



Damage 2: Trim / covers: Trim / covers (Stossfänger hinten unten) - Scratch(es) - Smart repair



Damage 3: Wheel / tyres: Alloy rim - front right side - Scratch(es) - Loss in value



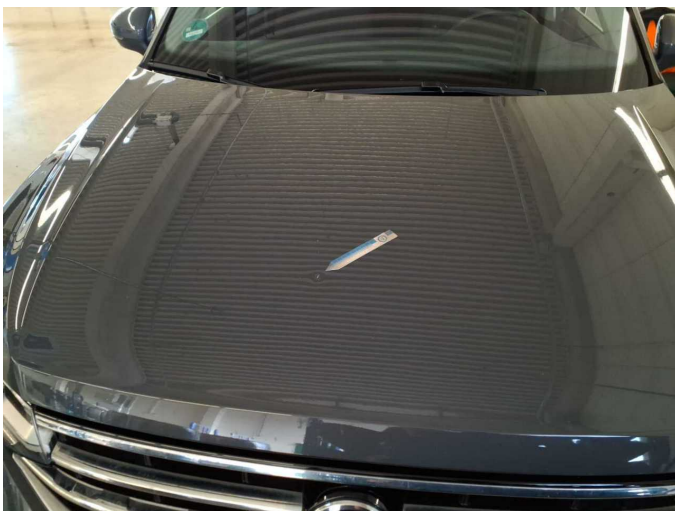
Damage 3: Wheel / tyres: Alloy rim - front right side - Scratch(es) - Loss in value



Damage 4: Trim / covers: Door trim - rear right side - Deformed - Replace



Damage 4: Trim / covers: Door trim - rear right side - Deformed - Replace



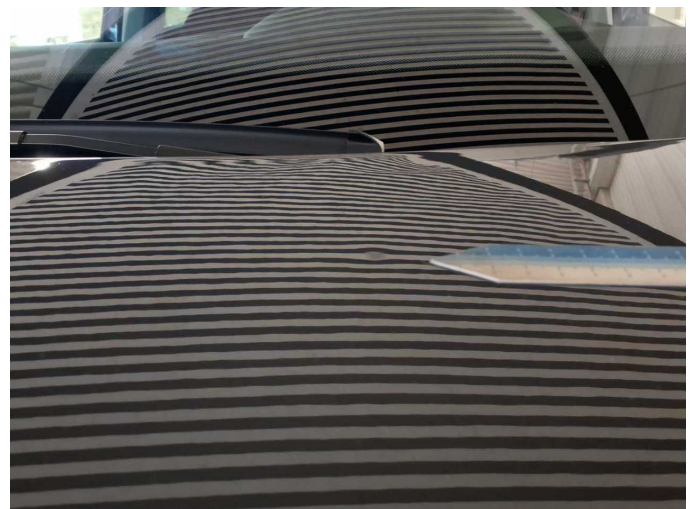
Damage 5: Bonnet: Bonnet - Dent / paintcoat damage - Repair and paint



Damage 5: Bonnet: Bonnet - Dent / paintcoat damage - Repair and paint



Damage 5: Bonnet: Bonnet - Dent / paintcoat damage - Repair and paint



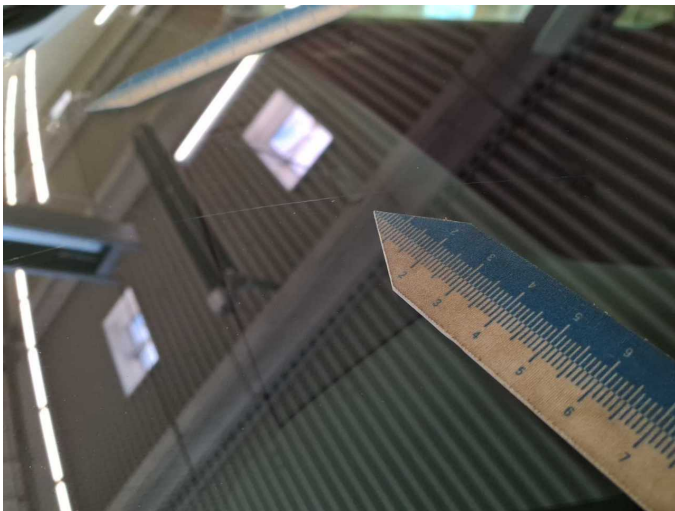
Damage 5: Bonnet: Bonnet - Dent / paintcoat damage - Repair and paint



Damage 6: Vehicle glazing: Windscreen with lane departure assistant (Steinschlag + Kratzer) - Unprofessionally repaired - Replace



Damage 6: Vehicle glazing: Windscreen with lane departure assistant (Steinschlag + Kratzer) - Unprofessionally repaired - Replace



Damage 6: Vehicle glazing: Windscreen with lane departure assistant (Steinschlag + Kratzer) - Unprofessionally repaired - Replace



Wartungshistorie

(gemäß Auftraggeber Informationen)

Fahrgestellnummer: WVGZZZ5NZNW511534

Hersteller / Modell: VOLKSWAGEN VOLKSWAGEN Tiguan 2.0 TDI SCR DSG
Elegance

Datum	KM-Stand	Beschreibung
11.07.2025	85.177	Kraftstofffilter ern; Luftfiltereinsatz ern; Motoröl b. Wartung; Ölfilter ern; Regelwartungsdienst; Systemtest/Eigendiagnose; Wartung Sonstiges
27.01.2025	72.345	AU; Bremse Sonstiges; Bremsklötze hinten; Bremsscheiben hinten
23.08.2024	54.651	Bremsflüssigkeit; Bremsflüssigkeit ern; Motoröl b. Wartung; Ölfilter ern; Regelwartungsdienst; Wartung Sonstiges
20.03.2023	25.885	Ölfilter ern; Regelwartungsdienst; Wartung Sonstiges