

## Expertise

Protocol number: 46016600  
Order No. / Reference: 26494532  
Inspection date: 17 Jun 2026

Manufacturer: Volkswagen

Model: Multivan Kurz eHybrid Life

VIN: WV2ZZZST4PH002369



### Vehicle details

#### Manufacturer / Type / Model / Equipment

Volkswagen Multivan Kurz eHybrid Life

**Vehicle Identification number** WV2ZZZST4PH002369

**Mileage (Read)** 82,630 km

**First registration** 16 Nov 2022

**Number of holders** 1

**Power / Engine displacement** 110 kw / 1,395 ccm

**Fuel type / Cylinder** Hybr.B/E ext.auf / 4

**Gearbox / Number of gears** Automatic / 6

**Type of drive** Front drive

**Type of vehicle** Van

**Colour / colour code** Pure Grey (H7J)

**Doors / Seats** 5 / 6

**Upholstery type** Cloth

**Colour of upholstery** Anthracite-Grey



TÜV SÜD Auto Partner GmbH  
Wiesenring 2  
04159 Leipzig

Inspection location  
Hartmann Fleet Professionals GmbH  
Leerenstraße 25  
29683 Bad Fallingbommel



## Equipment



## Standard equipment

- 12V system
- Storage compartments: Various shelves and storage compartments
- Airbag: Side and head airbags for driver and front passenger (head airbags for the outer rear seats - center airbag in the front)
- Exterior mirror housings in high-gloss black
- LED turn signals, integrated into the side of the exterior mirrors
- On-board tools and tire mobility set (in the storage compartments in the luggage compartment)
- Roof rails/roof load carrier: Mounting points for roof rack system (6 pieces)
- Tachometer
- Parking assistance in the front and rear areas
- Omission: Without partition wall
- Chassis: 17" disc brakes at the front and 16" disc brakes at the rear
- Electric windows, front
- Cruise control system with speed limiter (and "Intelligent Speed Assist")
- Glove compartment with light
- Tailgate: Tailgate with power closing assist (tailgate with power closing assist - power closing of the tailgate with unlocking function from inside)
- Child seat anchorage ISOFIX and Top Tether (for each individual seat in the passenger compartment)
- Cargo space divider (load capacity 20 kg) with bag hooks and luggage net
- LED headlights with LED daytime running lights
- Strip between the headlights painted in glossy black (with two chrome strips)
- Headlight range control
- Multifunctional display: Digital Cockpit Pro
- Multi-collision brake
- Fatigue detection
- Mains charging cable for household socket
- Non-smoking version
- eCall emergency call system
- Particle filter: Gasoline particulate filter
- Radio: App-Connect incl. App-Connect Wireless (for Apple CarPlay and Android Auto)
- Radio accessories: 8 speakers (passive)
- Radio accessories: USB interface (2 USB-C ports at the front - 4 USB-C charging ports in the passenger compartment)
- Keys for locking system: 2 vehicle keys
- Drawers under the outer seats in the passenger compartment and 2 waste bins
- Seat covers: Bi-color seat covers in fabric, design "Ribella"
- Seats in the passenger compartment: 2 individual seats facing forward in the 2nd row.
- Seats: Armrests on the front seats, on both sides (with electric lumbar support and folding table)
- Euro 6d ISC-FCM emissions standard
- Airbag for driver and front passenger (with passenger airbag deactivation)
- Evasive steering assist and turn assist
- Exterior mirrors, electrically adjustable, heated and folding
- Exterior mirrors, left and right convex
- Battery LiFePO4 450 A (40 Ah)
- Floor coverings: Textile floor mats in the driver's cab
- Floor coverings: Reinforced velour carpet in the passenger compartment
- third brake light
- DC/DC converter 3.0 KW
- Decorative inlays: Decorative inlays "Dark Silver Brushed"
- e-Sound
- Electronic Stability Program, ABS, ASR (with deactivation button), EDS (Hill Start Assist)
- Chassis: Suspension and damping, standard
- Windows: Front pane made of laminated safety glass, heat and sound insulating
- Transmission: DSG (dual-clutch transmission), 6-speed automatic
- Glove compartment with flap
- Tailgate: Power closing tailgate
- Rear window with wiper/washer system, heated
- Instrument cluster (km/h) (displays for speed, total/trip distance, engine speed, fuel level and time)
- Air conditioning with manual control in the driver's cab, with additional heating for the cargo/passenger compartment
- LED taillights
- Steering wheel: Multifunction leather steering wheel with paddle shifters
- Light and visibility (interior safety mirror, automatically dimming - intermittent wiper control with rain sensor for the front wipers - daytime running light control with auxiliary driving lights as well as "Coming home" and "Leaving home" function)
- Emergency braking assistant "Front Assist" (with pedestrian and cyclist detection)
- Radio: "Ready 2 Discover" with 25.4 cm (10 inch) color touchscreen
- Radio: Digital radio reception (DAB+)
- Radio accessories: Voice control
- Wheels/Tires: Tire pressure monitoring system
- Wheels/Tire Accessories: Lockable wheel bolts
- Sliding door: Closing aid on both sides for sliding doors (sliding door left and right with closing aid)
- Power steering
- Seat belt monitoring system (warning tone and light for unfastened seat belts front and rear)
- Seats: Armrest(s) inside the seats (removable and repositionable) (in the 2nd row of seats)
- Seats: Left and right seats in the 1st row (with height adjustment - including 2-way headrest)



- Sun visors with illuminated mirrors, ticket holder on the driver's side (with airbag label on sun visor and B-pillar)
- First aid kit, warning triangle and high-visibility vest
- Lashing eyes (4 pieces) (2 fixed lashing eyes in the cargo area - 2 variable lashing eyes for the rail system)
- Central locking with keyless start system "Keyless Start" without safe locking

- Lane keeping assistant "Lane Assist"
- Telephone: Mobile phone interface
- Traffic sign recognition
- Electronic immobilizer
- Green thermal insulation glazing

**Extra equipment**

- Ambient lighting in 10 colors, including footwell lighting for the 2nd row of seats.
- Towbar, foldable (with electric release)
- Adaptive Cruise Control (ACC) "stop & go" with speed limiter (including Car2X)
- Driver assistance systems: Driver assistant "Travel Assist"
- Windows: Acoustic package (darkened rear windows, side windows in insulated glass - additional interior noise reduction plus)
- Tailgate: Electric tailgate (opening/closing) (Tailgate with electric opening and closing - servo closing tailgate)
- Paint finish: Solid
- Charging cable for AC charging station (Mode 3)
- Park Assist and front and rear parking aid
- Wheels/Tires: "Toshima" 7.5 J x 18 alloy wheels in glossy black (4 "Toshima" 7.5 J x 18 alloy wheels in glossy black - 235/50 R 18 101 H xl tires, optimized for low rolling resistance - wheel center cover for alloy wheels - lockable wheel bolts)
- Heated seats for the driver's cab, left and right, separately adjustable
- Seating configuration - 1. Seat packages: 6-seater package = 2-2-2 (Approval for a maximum of 6 seats - 2 individual seats in the 3rd row - 2 individual seats facing forward in the 2nd row)
- Partitions: Mesh partition

- Trailer maneuvering assistant "Trailer Assist" including parking aid and parking steering assistant "Park Assist" (rear view camera - trailer maneuvering assistant with parking steering assistant "Park Assist" and parking aid in the front and rear area)
- Driver assistance systems: "Travel Assist" and "Emergency Assist" (Driver assistance "Travel Assist" including lane keeping assist "Lane Assist" and "Emergency Assist" - Lane change assist "Side Assist" including "Blind Spot Detection", parking assist and exit warning - Adaptive Cruise Control ACC "stop & go" with speed limiter)
- Navigation system "Discover Pro"
- Proactive occupant protection system (PreCrash Basic and Front)
- Rear View reversing camera
- Seats: 2 armrests on the inside (removable and repositionable) in the 3rd row of seats
- Seats: Armrests on both sides of the seats (removable and repositionable) (and folding tables on the back of the seats in the 2nd row)
- Lane change assistant "Side Assist" including "Blind Spot Detection"
- Table: Multifunctional table/center console with 3 cup holders (movable throughout the vehicle)

**Brief expert findings**

Documents submitted	At the time of the inspection, the vehicle registration certificate Part 2 (title) was available, but the vehicle registration certificate Part 1 (document) was not. (Copy)
VIN comparison	The vehicle identification number (VIN) was read from the vehicle and its conformity with the submitted documents was confirmed by the undersigned during the inspection.
Inspection	The inspection conditions were sufficient for the assessment of the vehicle. Lifting equipment and/or a pit were available for examining the vehicle.
Test drive	No test drive/shunting maneuver was carried out during the inspection of the vehicle.
Engine function test	An engine test run was performed.

**Value reducing factors**

No.	Component group	Description
1	Front bumper	Front bumper - Scratch(es) - Smart repair



## Wear and tear

No.	Component group	Description
1	Rear bumper	Rear bumper - Scratch(es) - No deduction
2	Vehicle glazing	Rear window - Scratch(es) - No deduction

The vehicle shows signs of wear and tear commensurate with its age and use.

## Previous damages

No.	Previous damage	Extent of damage (Net)
1	Front, Professionally repaired, Invoice of repair done Non-existent, from 1 Jun 2025	1.112,00 €
2	Side - left, Provided by user / customer, from 1 Aug 2025	4.343,31 €

## Accident damages

No.	Accident
1	Side - left

## Repainting

No.	Repainting
1	Bonnet, Professionally carried out, Invoice of repair done Non-existent

## Paint coat thickness measurement

Bonnet	295 µm
--------	--------

## Order/Scope of Order

An order was placed to prepare a sales report for the described vehicle. This report includes the following:

- Description of key vehicle information
- Documentation of equipment features  
(*Delivery by third-party service providers*)
- Documentation of damage, defects, missing parts
- Documentation of prior damage, unrepaired prior damage, repainting
- A brief visual or functional inspection of the equipment details, if possible.  
(*Functional testing of driver assistance systems is not included in the scope of services!*)
- a photographic documentation of the vehicle



## Basis for the order

This product is based on the guidelines for vehicle returns and valuations of light commercial vehicles published by Alphabet Fleet Management GmbH. The expert makes the specific findings in each individual case objectively, within the framework of the prescribed standards, based on their own expertise.

The vehicle inspection takes place in a fully assembled, unassembled state.

Damage or defects that can only be detected during disassembly/diagnostic work or through further investigation remain within the realm of prognostic risk. An increased risk exists due to concealed defects caused by fraudulent misrepresentation and which were not identifiable by the expert.

Damage or defects resulting from normal use or wear and tear of the vehicle will be accepted in accordance with the applicable standard.

There was no explicit identification or monetary consideration of the expected features within the product.

Features which, in their nature and extent, slightly exceed normal use but do not constitute unacceptable damage, will be documented and indicated as signs of wear, if applicable.

Damage or defects that, according to the applicable standard, can no longer be attributed to normal use or wear and tear are listed under "Value Reducing Factors" in the product description.

Depending on the product specification, a monetary ID can be provided. If this takes place, the costs can be 100% d or pro rata depending on the vehicle's age and mileage.

## Previous damages

Non-repaired previous damages were found at the vehicle. The necessary repair costs are listed in the expert report or if necessary, are listed in detail in a separately enclosed repair cost calculation.



Figure 1: Diagonal front (left)



Figure 2: Diagonal front (right)



Figure 3: Diagonal rear (left)



Figure 4: Diagonal rear (right)

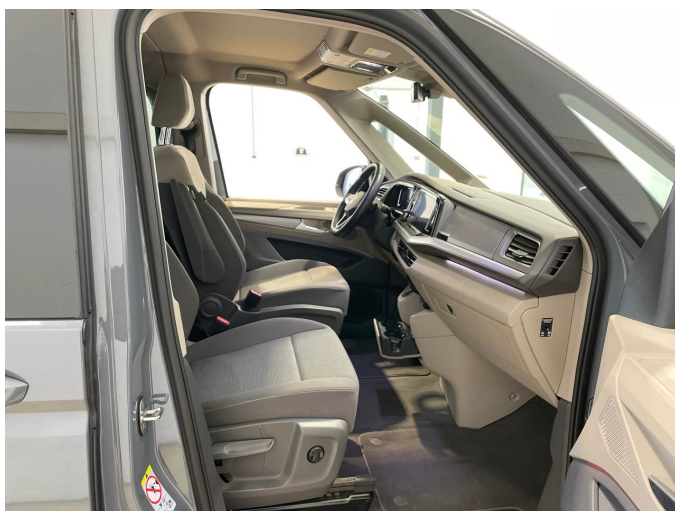


Figure 5: Interior - front



Figure 6: Interior - rear



Figure 7: Instrument cluster



Figure 8: Instrument panel



Figure 9: Interior 360° view



Figure 10: Cargo area



Figure 11: VIN



Figure 12: Mounted tyres



Figure 13: Documents



Figure 14: Documents

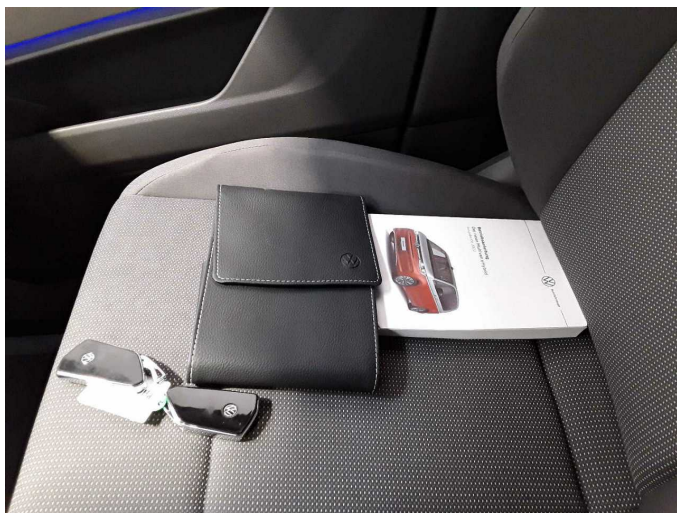


Figure 15: Documents



Figure 16: Navigation



Figure 17: Misc.



Figure 18: Misc.



Figure 19: Misc.



Figure 20: Misc.

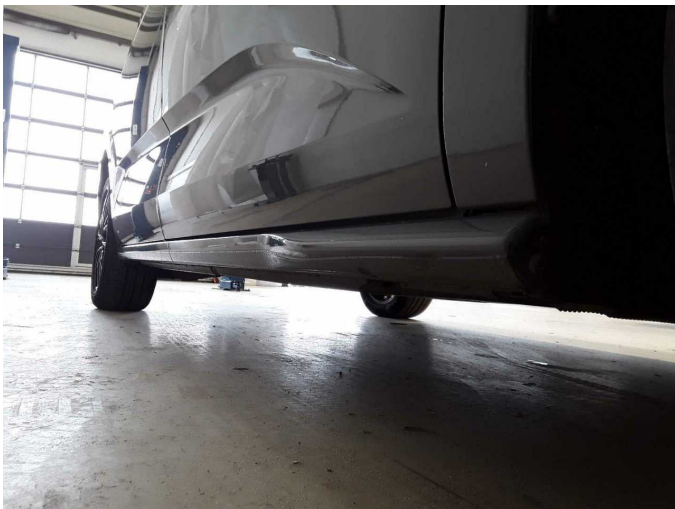


Figure 21: Misc.



Figure 22: Misc.



Figure 23: Misc.

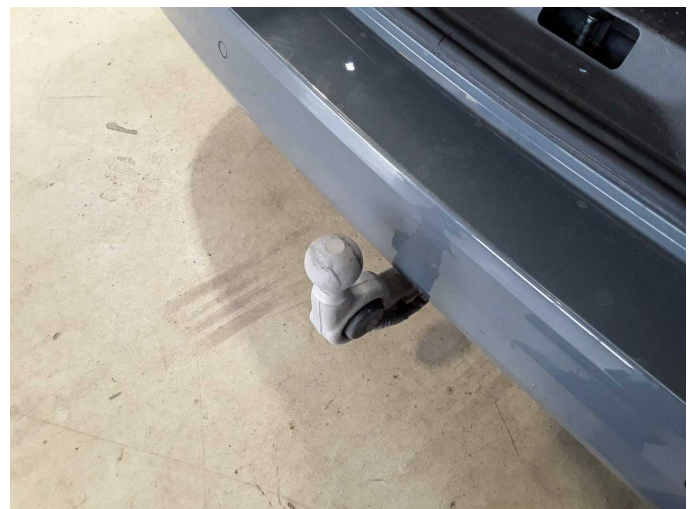


Figure 24: Misc.



Figure 25: Misc.



Figure 26: Misc.



Damage 1: Front bumper: Front bumper - Scratch(es) - Smart repair



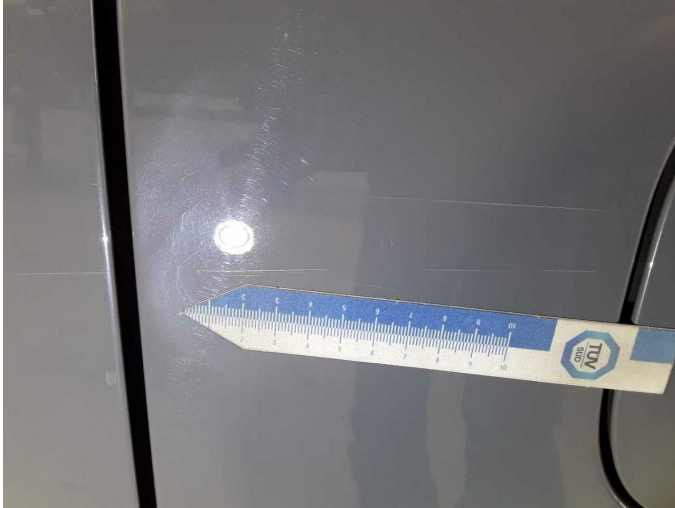
Damage 1: Front bumper: Front bumper - Scratch(es) - Smart repair



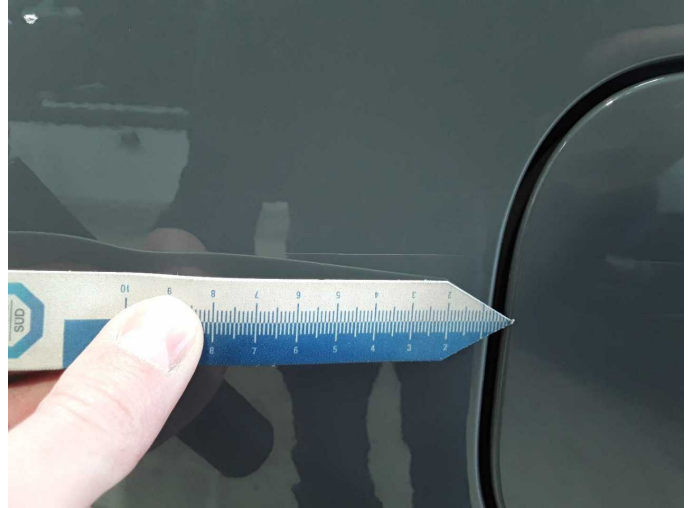
Accident 1: Side - left



Accident 1: Side - left



Accident 1: Side - left



Accident 1: Side - left



Accident 1: Side - left



Accident 1: Side - left



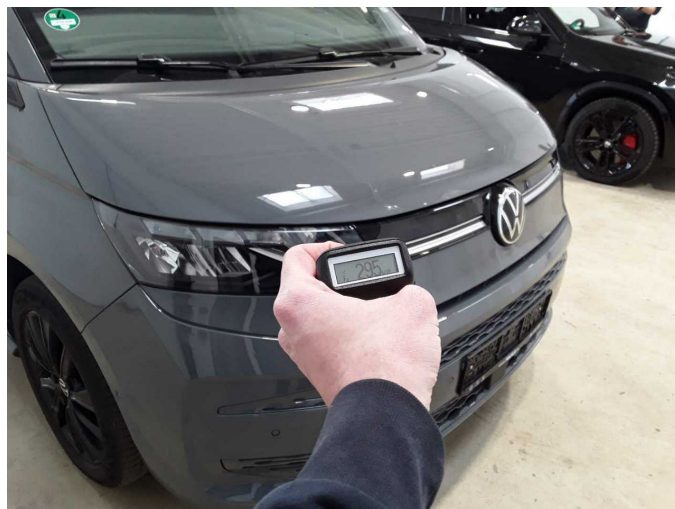
Accident 1: Side - left



Accident 1: Side - left



**Accident 1: Side - left**



**Repainting 1: Bonnet**



**Repainting 1: Bonnet**



# Wartungshistorie

(gemäß Auftraggeber Informationen)

Fahrgestellnummer: WV2ZZZST4PH002369

Hersteller / Modell: VOLKSWAGEN VW Multivan T7 Kurz eHybrid Life

Datum	KM-Stand	Beschreibung
27.01.2026	76.248	Motoröl b. Wartung; Ölfilter ern; Ölwechsel; Wartung Sonstiges
24.04.2025	61.583	Getriebeöl ern/prüfen; Motoröl b. Wartung; Ölfilter ern; Regelwartungsdienst; Wartung Sonstiges; Zündkerzen ern
14.10.2024	47.584	Bremsflüssigkeit; Bremsflüssigkeit ern; Motoröl b. Wartung; Ölfilter ern; Ölwechsel; Wartung Sonstiges
28.05.2024	30.883	Motoröl b. Wartung; Ölfilter ern; Regelwartungsdienst; Wartung Sonstiges
30.06.2023	15.588	Motoröl b. Wartung; Ölfilter ern; Ölwechsel; Wartung Sonstiges