

Expertise

Protocol number: 42909024
Order number / reference: 25580811
Inspection date: 9 Dec 2025

Manufacturer: Opel

Model: Grandland 1.5 D Automatik Ultimate

VIN: W0VZCYHZ0N6833226



Vehicle details

Manufacturer / Type / Model / Equipment

Opel Grandland 1.5 D Automatik Ultimate

Vehicle Identification number W0VZCYHZ0N6833226

Mileage (Read) 37,121 km

First registration 20 Oct 2022

Number of holders 1

Power / Engine displacement 96 kw / 1,499 ccm

Fuel type / Cylinder Diesel / 4

Gearbox / Number of gears Automatic / 8

Type of drive Front drive

Type of vehicle SUV

Colour / colour code Jade Weiß

Doors / Seats 5 / 5

Upholstery type Leather

Colour of upholstery Black



Vehicle details

Maintenance booklet / proof	digital proof / complete	Next maintenance in	7 Tag(e)
Last maintenance on / at	12/2024 at 24,866 km		
Key is / should be	2 / 2	FZG documents	ZB#2 (B) was available (copy), ZB#1 (S) was not available
		Letter No.	GN188485
Previous damage / Accident	Detectable	Repainting	None detectable
Inspection conditions	sufficient	Lifting equipment / pit	yes
Test drive	Not performed	Engine function test	Performed
Manufacturer key number/ type code number	1844 / AHG 00221		
Emission standard	EURO6;WLTP;AP;PI/CI; M, N1 I	Fine dust sticker	
Permitted total weight	2,000 kg	Empty weight	

Tyres

Mounted tyres

#	Tyre size	Type of tyre	Manufacturer	Tread depth
1)	215/65 R17 99H	Winter tyres on Light alloy	Continental	5mm / 5mm
2)	215/65 R17 99H	Winter tyres on Light alloy	Continental	5mm / 5mm

Additional tyres

#	Tyre size	Type of tyre	Manufacturer	Tread depth
1)	225/55 R18 102V	Summer tyres on Light alloy	Michelin	6mm / 6mm
2)	225/55 R18 102V	Summer tyres on Light alloy	Michelin	7mm / 7mm

Replacement

Typ	Tyre size	Type of tyre	Manufacturer	Tread depth
Tirefit		Expiration date 03/2028		

Legend: Tread depth for tires on the left is in the first place, for tires on the right is in the second place on the axle in the direction of travel



Equipment

Standard equipment

- 2 ignition keys, both foldable
- Storage compartments
- Airbag: front and side airbags
- Anti-lock braking system (ABS) with cornering brake control and brake assist
- Hill Start Assist
- On-board computer
- Roof design line in chrome
- Decorative strips, Dax/Palladium Medium
- tachometer
- Electronic brake force distribution (EBD)
- Electric windows front and rear
- Luggage compartment cover
- Transmission: 8-speed automatic
- Interior lighting, front and rear
- IntelliLux LED Pixel Matrix Light
- Dual-zone automatic climate control including rear footwell heating
- LED headlights
- Steering wheel, height and length adjustable
- Center armrest, movable, front, including storage compartment and cup holder
- Quickheat heating system
- Radio accessories: Digital radio reception DAB+
- Tire pressure warning
- Wheels: Tire repair kit
- Power steering, speed-dependent
- Seats: Heated seats, multi-stage, driver and front passenger
- socket, 12 volts
- Phone: Wireless Charging
- Preparation for ISOFIX child seat fastening system, including Top Tether fastening eyes, rear outside
- Central locking with radio remote control and interior switches
- 230V equipment
- Airbag driver and passenger side
- Airbag: Head airbags, front and rear outside
- Automatic activation of the hazard warning lights
- Exterior mirrors, electrically adjustable and heated, electrically folding
- Roof in Diamond Black
- Roof rails
- Diesel particulate filter with SCR and oxidation catalyst
- Electric parking brake
- Electronic Stability Program Plus (ESP Plus)
- Front collision warning
- Cruise control with intelligent speed limiter
- Rear window wiper
- Interior rearview mirror, automatically dimming
- Child safety lock in the rear doors, manual
- Headrests (3) rear, height adjustable
- Front headrests, height adjustable
- Leather steering wheel including remote control
- Make-up mirror in sun visor, illuminated, driver and passenger
- Park & Go Premium for Ultimate
- Radio: Multimedia Navi Pro
- Rain sensor
- Wheels: Light alloy 7.5 J x 18 with 5 double spokes in bicolor/black
- Seat belts
- Solar Protect thermal insulation glazing
- Start/Stop system
- Bumpers and side panels in high-gloss black
- Underbody protection look, front and rear, in silver
- Immobiliser
- Winter equipment

Extra equipment

- Seats: Ergonomic active seat with AGR seal of approval for driver and front passenger (leather, black, partially perforated, including seat contact surfaces, leather interior seat bolsters (headrest, door trim, outer seat bolsters in imitation leather). Driver's seat with 8-way electrical adjustment (length, height, backrest, seat angle), memory function. Passenger seat with 6-way manual adjustment (length, height, backrest angle). Seat angle electrically adjustable. Lumbar support, electrically adjustable in height and length. Extendable thigh support, manual pocket on the back of the front seat. Seat valve. Winter protection including rear seat heating.
- Paint finish: Uni Jade White
- safety net
- Winter wheels



Brief expert findings

Documents submitted	At the time of the inspection, the registration certificate Part 2 (letter) was available, but the registration certificate Part 1 (certificate) was not. (Copy)
VIN comparison	The vehicle identification number (VIN) was read from the vehicle and its conformity with the submitted documents was verified during the inspection by the undersigned.
Inspection	The inspection conditions were sufficient for the assessment of the vehicle. Lifting equipment and a pit were available for examining the vehicle.
Test drive	No test drive/maneuvering was carried out during the inspection of the vehicle.
Engine function test	An engine test run was performed.

Value reducing factors

No.	Component group	Description
1	Documents	Service book - Incomplete - No deduction
2	Seat - front	Backrest cover - left side - Soiled - Clean
3	Seat - front	Backrest cover - right side - Soiled - Clean
4	Front bumper	Spoiler - Scratch(es) - Smart repair
5	Sill - left side	Sill - Scratch(es) - Smart repair
6	Wheel / tyres	Alloy rim - front right side - Scratch(es) - Loss in value
7	2nd wheel set	2 alloy rims - Scratched - Replace

Previous damages

No.	Previous damage	Extent of damage (Net)
1	Front, Provided by user / customer	2.170,76 €
2	Front, Provided by user / customer	3.088,11 €

Order/Scope of order

The order was placed to prepare a sales report for the vehicle described. This includes the following:

- Description of core relevant information about the vehicle
- Documentation of equipment features
(Delivery by third-party service providers)
- Documentation of damage, defects, missing parts
- Documentation of previous damage, unrepaired previous damage, repainting
- a brief visual or functional inspection of the equipment details if possible.
(Functional tests of driver assistance systems are not included in the scope of services!)
- a photo documentation of the vehicle



Basis for the order

This product is based on the Alphabet Fuhrpark GmbH guidelines for vehicle returns and valuations. The expert makes the explicit findings in each individual case objectively within the framework of the specified standards based on his or her own expertise.

The vehicle inspection takes place in a disassembled state.

Damage or defects that can only be detected during disassembly/diagnosis work or through advanced knowledge remain within the scope of the prognosis risk. An extended risk exists for concealed defects caused by fraudulent deception and not identifiable by the expert.

Damage or defects resulting from normal use or wear and tear of the vehicle will be accepted according to the applicable standard.

There was no explicit identification or monetary consideration of the expected features within the product.

Features which in their nature and severity slightly exceed normal use but do not constitute unacceptable damage will be documented and identified under signs of use if necessary.

Damage or defects that can no longer be attributed to normal use or wear and tear according to the underlying standard are listed in the product under value-reducing factors.

Depending on the product specification, a monetary ID can be provided. If this takes place, the costs can be 100% d or pro rata depending on the vehicle's age and mileage.

Previous damages

According to available information previous damages were repaired at the vehicle. Traces of repairs, which allow conclusions about the area of repair, were not recognizable during the inspection.

Comments

Wartungshistorie gemäß Auftraggeber Informationen.



Figure 1: Diagonal front (left)



Figure 2: Diagonal front (right)



Figure 3: Diagonal rear (left)



Figure 4: Diagonal rear (right)



Figure 5: Interior - front



Figure 6: Interior - rear



Figure 7: Instrument cluster



Figure 8: Instrument panel



Figure 9: Interior 360° view

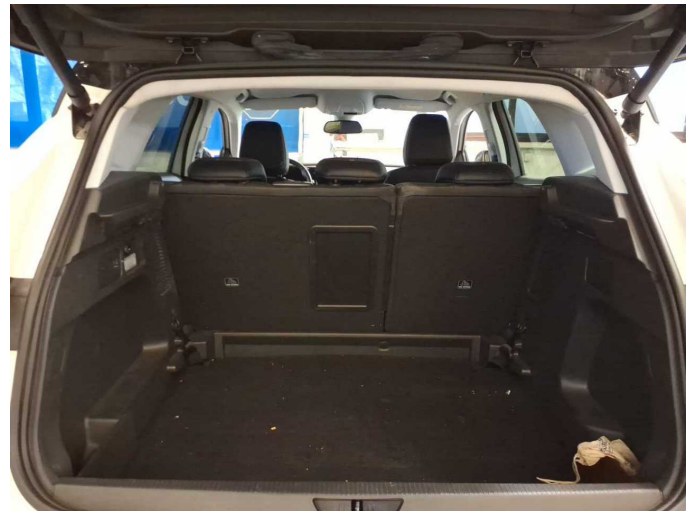


Figure 10: Cargo area



Figure 11: VIN



Figure 12: Mounted tyres



Figure 13: Documents



Figure 14: Documents



Figure 15: Documents



Figure 16: Additional tyres



Figure 17: Additional tyres

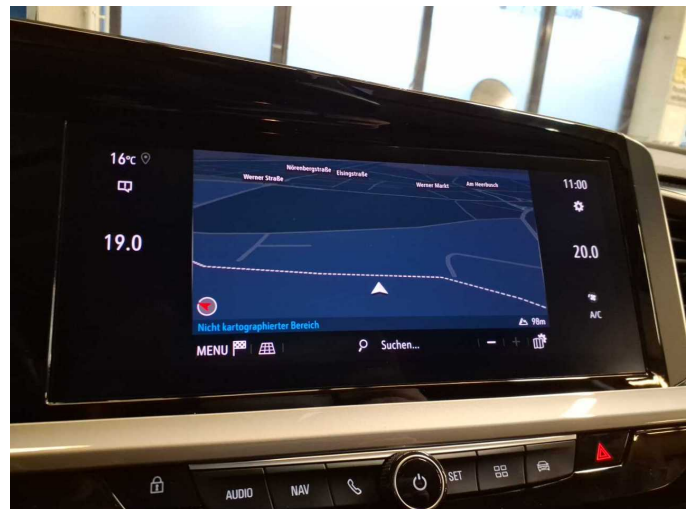


Figure 18: Navigation



Figure 19: Misc.



Figure 20: Misc.



Figure 21: Misc.



Figure 22: Misc.



Figure 23: Misc.



Figure 24: Misc.



Figure 25: Misc.



Figure 26: Misc.



Figure 27: Misc.



Figure 28: Misc.



Figure 29: Misc.



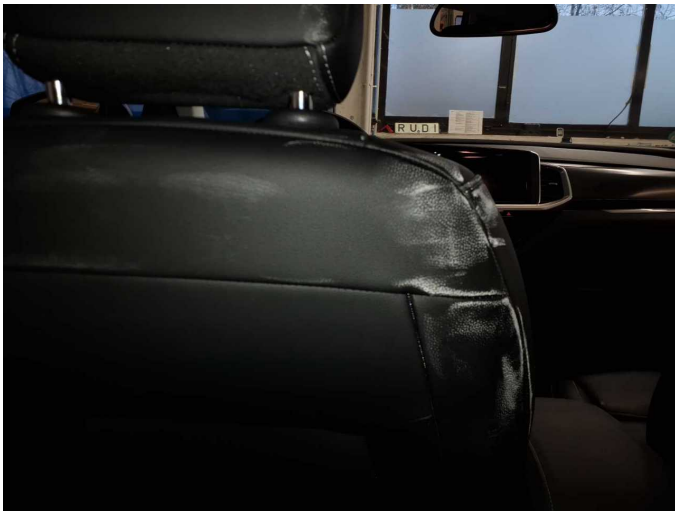
Figure 30: Misc.



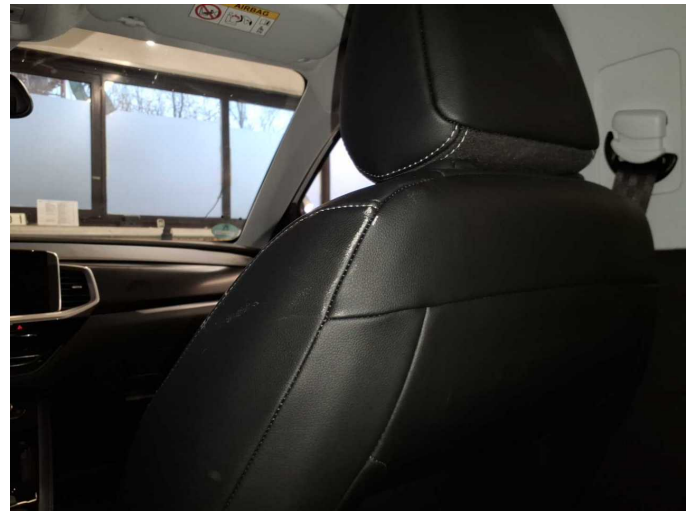
Figure 31: Misc.



Figure 32: Misc.



Damage 2: Seat - front: Backrest cover - left side - Soiled - Clean



Damage 3: Seat - front: Backrest cover - right side - Soiled - Clean



Damage 4: Front bumper: Spoiler - Scratch(es) - Smart repair



Damage 4: Front bumper: Spoiler - Scratch(es) - Smart repair



Damage 5: Sill - left side: Sill - Scratch(es) - Smart repair



Damage 5: Sill - left side: Sill - Scratch(es) - Smart repair



Damage 6: Wheel / tyres: Alloy rim - front right side - Scratch(es) - Loss in value



Damage 6: Wheel / tyres: Alloy rim - front right side - Scratch(es) - Loss in value



Damage 7: 2nd wheel set: 2 alloy rims - Scratched - Replace



Damage 7: 2nd wheel set: 2 alloy rims - Scratched - Replace



Damage 7: 2nd wheel set: 2 alloy rims - Scratched - Replace



Damage 7: 2nd wheel set: 2 alloy rims - Scratched - Replace



Damage 7: 2nd wheel set: 2 alloy rims - Scratched - Replace



Damage 7: 2nd wheel set: 2 alloy rims - Scratched - Replace



Wartungshistorie

(gemäß Auftraggeber Informationen)

Fahrgestellnummer: W0VZCYHZ0N6833226

Hersteller / Modell: OPEL OPEL Grandland 1.5 D Automatik Ultimate

Datum	KM-Stand	Beschreibung
12.12.2024	24.866	Bremsflüssigkeit; Bremsflüssigkeit ern; Motoröl b. Wartung; Ölfilter ern; Regelwartungsdienst; Wartung Sonstiges
01.12.2023	14.040	Motoröl b. Wartung; Ölfilter ern; Regelwartungsdienst; Wartung Sonstiges