

Expertise

Protocol number: 45975448
Order No. / Reference: 26445580
Inspection date: 16 Jun 2026

Manufacturer: Opel

Model: Insignia Sports Tourer 2.0 Diesel Aut. Business Elegance

VIN: W0VZT8GP5M1012764



Vehicle details

Manufacturer / Type / Model / Equipment

Opel Insignia Sports Tourer 2.0 Diesel Aut. Business Elegance

Vehicle Identification number W0VZT8GP5M1012764

Mileage (Read) 103,770 km

First registration 14 Apr 2021

Number of holders 1

Power / Engine displacement 128 kw / 1,995 ccm

Fuel type / Cylinder Diesel / 4

Gearbox / Number of gears Automatic / 8

Type of drive Front drive

Type of vehicle Station wagon

Colour / colour code Onyx Black Metallic

Doors / Seats 5 / 5

Upholstery type Cloth / leather combination

Colour of upholstery Black-Anthracite



Vehicle details

Maintenance booklet / proof	digital proof / complete	Next maintenance in	83 %
Last service on / at	04/2026 at 100,067 km		
Key is / should be	2 / 2	FZG documents	ZB#2 (B) was available (copy), ZB#1 (S) was not available.
		Letter No.	FX003880
Previous damage / Accident	None detectable	Repainting	None detectable
Inspection conditions	sufficient	Lifting equipment / pit	yes
Test drive	Not performed	Engine function test	Performed
Manufacturer key number/ type code number	1844 / AMC 00126		
Emission standard	EURO6;WLTP;AP;PI/CI; M, N1 I	fine dust sticker	
Permitted total weight	2,245 kg	Empty weight	

Tyres

Mounted tyres

#	Tyre size	Type of tyre	Manufacturer	Tread depth
1)	245/45 R18 100Y	Summer tyres on Light alloy	Bridgestone	4mm / 4mm
2)	245/45 R18 100Y	Summer tyres on Light alloy	Bridgestone	4mm / 4mm

Additional tyres

#	Tyre size	Type of tyre	Manufacturer	Tread depth
1)	225/55 R17 101V	Winter tyres on Light alloy	Goodyear	6mm / 6mm
2)	225/55 R17 101V	Winter tyres on Light alloy	Goodyear	6mm / 6mm

Replacement

Typ	Tyre size	Type of tyre	Manufacturer	Tread depth
	Tirefit	Expiration date 12/2024		

Legend: Tread depth information for the left tire is listed first, for the right tire it is listed second on the axle in the direction of travel.



Equipment

Standard equipment

- Storage compartments
- Airbag: Front and rear outer head airbags
- Ambient lighting
- Electrically adjustable and heated exterior mirrors for driver and passenger side
- Roof rails, silver anodized
- Tachometer
- Electronic Stability Program (ESP Plus)
- Front collision warning system with pedestrian detection and automatic emergency braking
- Speed controller
- rear window wiper
- Automatic climate control, two zones
- Rear headrests (3 pieces)
- LED fog lights
- Steering column adjustable for height and reach
- Illuminated makeup mirrors in both sun visors
- Package: Charging (Sports Tourer)
- Park & Go with reversing camera, digital
- Parkpilot, front and rear parking aid
- Quickheat rapid heating system
- Radio: Multimedia Navi Pro with 8" color touchscreen display
- Tire pressure gauge
- Rear seat backrest with FlexFold function, foldable in a 40:20:40 ratio
- safety net
- Seats: Ergonomic active seat (AGR) for driver and front passenger
- Bumpers painted in body color
- Pre-installation for child seat mounting system "ISOFIX"
- Thermal insulation glazing, green tinted
- Second folding ignition key

Extra equipment

- Airbag: Side airbags, rear outer
- Paint finish: Metallic
- Package: Winter 1 (AGR, driver and front passenger) (Seat heating, multi-stage, driver and front passenger - Heated leather steering wheel - Ergonomic active seat (AGR), driver and front passenger (length, height and backrest angle manually adjustable, seat angle electrically adjustable, lumbar support electropneumatically adjustable in height and length, extendable thigh support manually, headrest height and angle adjustable))
- Solar Protect heat-insulating glazing (in the rear, heavily tinted)

- Airbag: Front airbags (multi-stage) and side airbags, driver and front passenger
- Anti-lock braking system (ABS)
- Hill Start Assist
- third brake light
- Diesel particulate filter
- Electronic brake force distribution (EBD)
- Electric windows front and rear
- Pedestrian protection including active hood
- luggage compartment cover
- Transmission: 8-speed automatic transmission
- Child safety lock in the rear doors, manual
- Front headrests
- LED headlights
- LED daytime running lights including LED indicators, front and LED taillights
- Center armrest, front
- Package: Easy-Access
- Electric parking brake
- Upholstery: Monita fabric/Premium leather look
- Radio: Digital radio reception DAB+
- Radio accessories: 2 USB ports
- Tire repair kit
- Wheels: Alloy wheels 8.5 J x 18 (multi-spoke)
- Power steering
- Seat belts: Three-point seat belts in all seats
- Visibility equipment
- Lane Keeping Assist
- Start/Stop System
- Traction Control (TC) Plus
- Immobiliser
- Central locking with remote control

- Velour floor mats, part number 39200601
- Package: Innovations 2 (Sports Tourer automatic transmission) (Head-up display, Adaptive cruise control (Generation 3), Stop & Go function, Forward collision alert with pedestrian detection and automatic emergency braking, active from 4 km/h, range 150 m. In case of collision risk, the braking system is prepared and, if necessary, emergency braking/automatic emergency braking is initiated. Lane keeping assist, keyless entry and start system, sensor-controlled electric tailgate, stainless steel loading sill protector)



Brief expert findings

Documents submitted	At the time of the inspection, the vehicle registration certificate Part 2 (title) was available, but the vehicle registration certificate Part 1 (document) was not. (Copy)
VIN comparison	The vehicle identification number (VIN) was read from the vehicle and its conformity with the submitted documents was confirmed by the undersigned during the inspection.
Inspection	The inspection conditions were sufficient for the assessment of the vehicle. Lifting equipment and/or a pit were available for examining the vehicle.
Test drive	No test drive/shunting maneuver was carried out during the inspection of the vehicle.
Engine function test	An engine test run was performed.

Value reducing factors

No.	Component group	Description
1	Equipment	Tirefit filler - Expired - Replace
2	Wheel / tyres	Alloy rim - front right side - Scratched - Loss in value
3	Side panel - rear right side	Side panel - Scratch(es) - Paint
4	Side panel - rear left side	Side panel - Dent / paintcoat damage - Paint
5	Rear bumper	Rear bumper - Scratch(es) - Paint
6	Bonnet	Bonnet - Dent / paintcoat damage - Repair and paint
7	Front bumper	Front bumper - Scratch(es) - Paint

Wear and tear

No.	Component group	Description
1	2nd wheel set	2 alloy rims - Scratched - No deduction
2	Vehicle glazing	Windscreen - Stone chips - No deduction
3	Door - front right side	Door - Scratch(es) - No deduction

The vehicle shows signs of wear and tear commensurate with its age and use.

Order/Scope of Order

An order was placed to prepare a sales report for the described vehicle. This report includes the following:

- Description of key vehicle information
- Documentation of equipment features
(*Delivery by third-party service providers*)
- Documentation of damage, defects, missing parts
- Documentation of prior damage, unrepaired prior damage, repainting
- A brief visual or functional inspection of the equipment details, if possible.
(*Functional testing of driver assistance systems is not included in the scope of services!*)
- a photographic documentation of the vehicle



Basis for the order

This product is based on the guidelines for vehicle returns and valuations published by Alphabet Fleet GmbH. The expert makes the specific findings in each individual case objectively, within the framework of the prescribed standards, based on their own expertise.

The vehicle inspection takes place in a fully assembled, unassembled state.

Damage or defects that can only be detected during disassembly/diagnostic work or through further investigation remain within the realm of prognostic risk. An increased risk exists due to concealed defects caused by fraudulent misrepresentation and which were not identifiable by the expert.

Damage or defects resulting from normal use or wear and tear of the vehicle will be accepted in accordance with the applicable standard.

There was no explicit identification or monetary consideration of the expected features within the product.

Features which, in their nature and extent, slightly exceed normal use but do not constitute unacceptable damage, will be documented and indicated as signs of wear, if applicable.

Damage or defects that, according to the applicable standard, can no longer be attributed to normal use or wear and tear are listed under "Value Reducing Factors" in the product description.

Depending on the product specification, a monetary ID can be provided. If this takes place, the costs can be 100% d or pro rata depending on the vehicle's age and mileage.

Previous damages

No apparent prior damage that had been repaired could be found on the vehicle.

Comments

- Der beiliegende Winterradsatz ist kein Bestandteil des Auslieferungsumfangs.



Figure 1: Diagonal front (left)



Figure 2: Diagonal front (right)



Figure 3: Diagonal rear (left)



Figure 4: Diagonal rear (right)



Figure 5: Interior - front



Figure 6: Interior - rear



Figure 7: Instrument cluster



Figure 8: Instrument panel



Figure 9: Interior 360° view



Figure 10: Cargo area

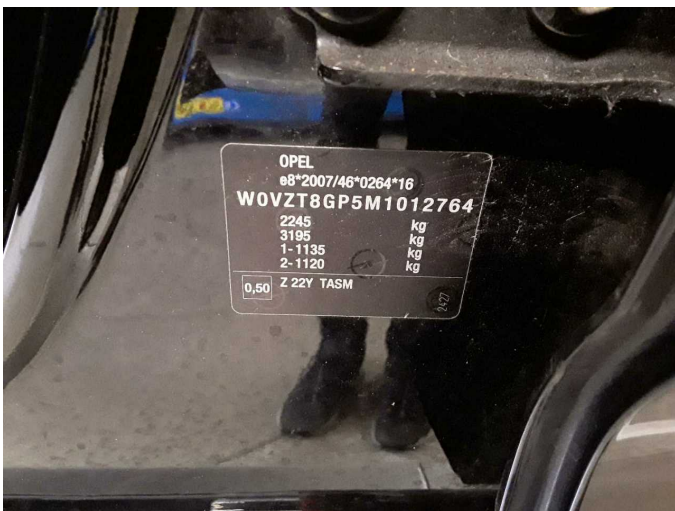


Figure 11: VIN



Figure 12: Mounted tyres

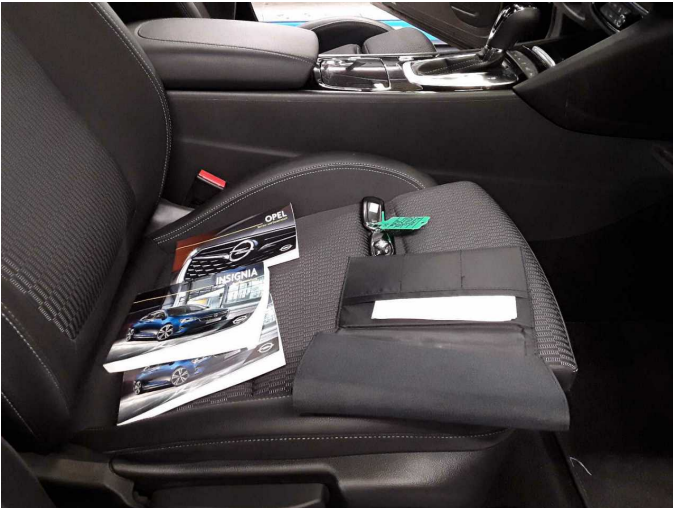


Figure 13: Documents

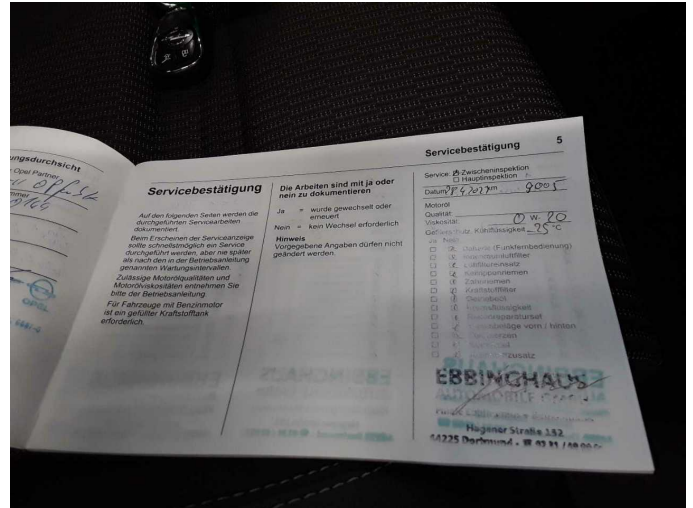


Figure 14: Documents

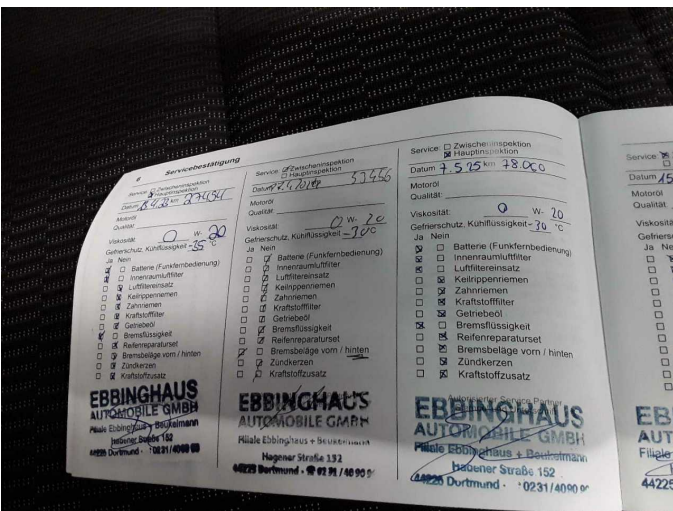


Figure 15: Documents

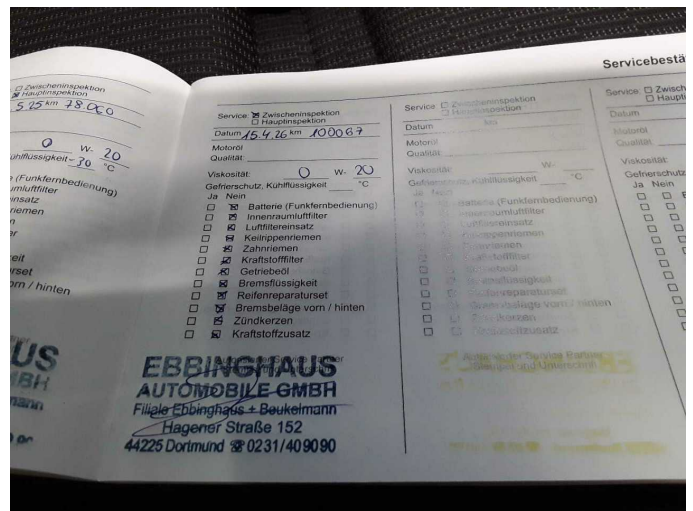


Figure 16: Documents



Figure 17: Additional tyres



Figure 18: Navigation



Figure 19: Misc.



Figure 20: Misc.



Figure 21: Misc.



Figure 22: Misc.



Figure 23: Misc.



Figure 24: Misc.



Figure 25: Misc.



Figure 26: Misc.

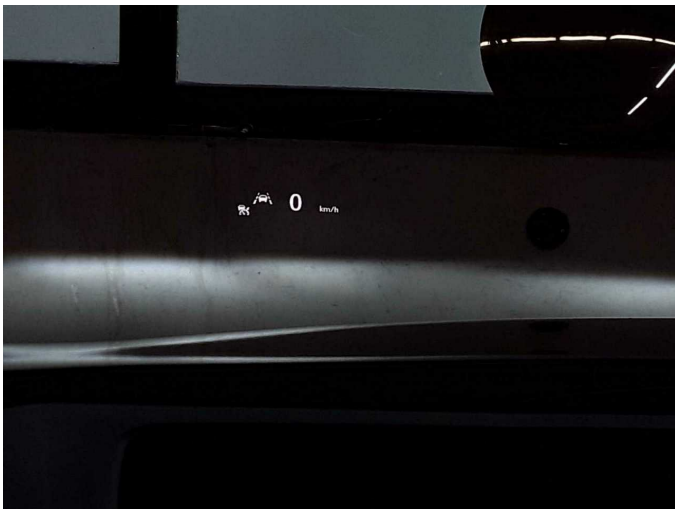


Figure 27: Misc.



Figure 28: Misc.



Figure 29: Misc.

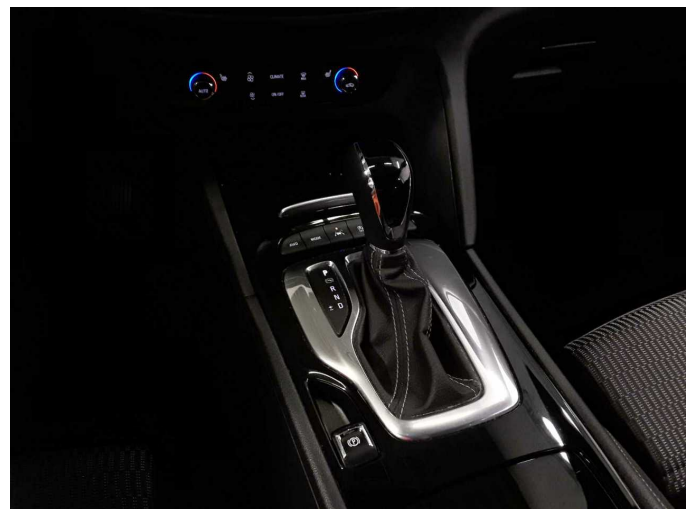


Figure 30: Misc.



Figure 31: Misc.



Figure 32: Misc.



Damage 1: Equipment: Tirefit filler - Expired - Replace



Damage 2: Wheel / tyres: Alloy rim - front right side - Scratched - Loss in value



Damage 2: Wheel / tyres: Alloy rim - front right side - Scratched - Loss in value



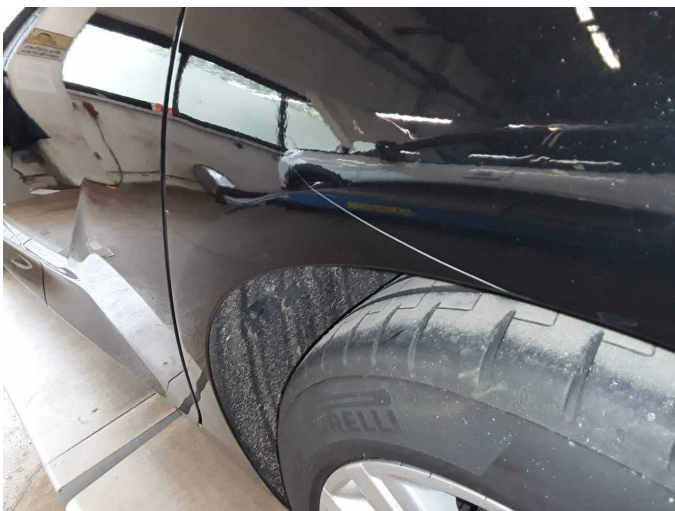
Damage 3: Side panel - rear right side: Side panel - Scratch(es) - Paint



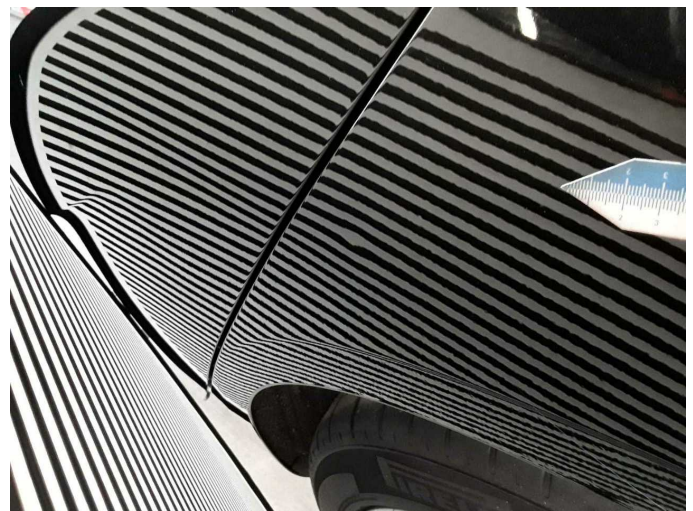
Damage 3: Side panel - rear right side: Side panel - Scratch(es) - Paint



Damage 4: Side panel - rear left side: Side panel - Dent / paintcoat damage - Paint



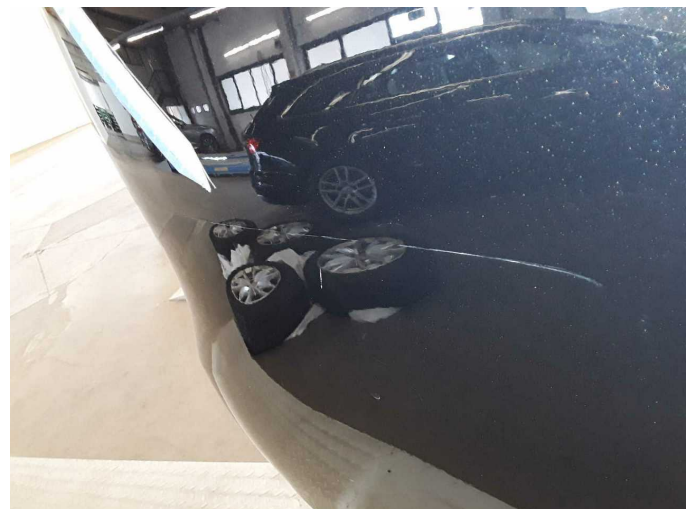
Damage 4: Side panel - rear left side: Side panel - Dent / paintcoat damage - Paint



Damage 4: Side panel - rear left side: Side panel - Dent / paintcoat damage - Paint



Damage 5: Rear bumper: Rear bumper - Scratch(es) - Paint



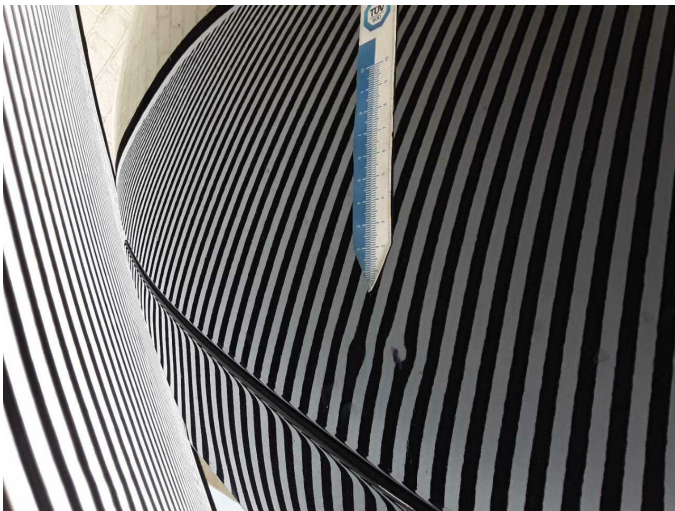
Damage 5: Rear bumper: Rear bumper - Scratch(es) - Paint



Damage 5: Rear bumper: Rear bumper - Scratch(es) - Paint



Damage 6: Bonnet: Bonnet - Dent / paintcoat damage - Repair and paint



Damage 6: Bonnet: Bonnet - Dent / paintcoat damage - Repair and paint



Damage 6: Bonnet: Bonnet - Dent / paintcoat damage - Repair and paint



Damage 7: Front bumper: Front bumper - Scratch(es) - Paint



Damage 7: Front bumper: Front bumper - Scratch(es) - Paint



Damage 7: Front bumper: Front bumper - Scratch(es) - Paint



Damage 7: Front bumper: Front bumper - Scratch(es) - Paint



Wear and tear 2: Vehicle glazing: Windscreen - Stone chips - No deduction



Wear and tear 2: Vehicle glazing: Windscreen - Stone chips - No deduction



Wear and tear 3: Door - front right side: Door - Scratch(es) - No deduction



Wear and tear 3: Door - front right side: Door - Scratch(es) - No deduction



Wartungshistorie

(gemäß Auftraggeber Informationen)

Fahrgestellnummer: W0VZT8GP5M1012764
Hersteller / Modell: OPEL OPEL Insignia Sports Tourer 2.0 Diesel Aut. Business Elegance

Datum	KM-Stand	Beschreibung
16.04.2026	100.067	AU; Motoröl b. Wartung; Ölfilter ern; Regelwartungsdienst; Wartung Sonstiges
07.05.2025	78.060	Bremsflüssigkeit; Bremsflüssigkeit ern; Kraftstofffilter ern; Luftfiltereinsatz ern; Motoröl b. Wartung; Ölfilter ern; Regelwartungsdienst; Wartung Sonstiges
09.04.2025	76.345	Bremse Sonstiges; Bremsklötze vorne; Bremsscheiben + Klötze v; Bremsscheiben vorne
19.04.2024	53.456	AU; Bremsklötze hinten; Motoröl b. Wartung; Ölfilter ern; Regelwartungsdienst; Systemtest/Eigendiagnose; Wartung Sonstiges
04.10.2023	40.419	Systemtest/Eigendiagnose
13.04.2023	27.494	Bremsflüssigkeit; Bremsflüssigkeit ern; Kraftstofffilter ern; Motoröl b. Wartung; Ölfilter ern; Regelwartungsdienst; Wartung Sonstiges
29.04.2022	9.005	Motoröl b. Wartung; Ölfilter ern; Regelwartungsdienst; Wartung Sonstiges