

Expertise

Protocol number: 45522123
Order No. / Reference: 26243498
Inspection date: 8 May 2026

Manufacturer: Volkswagen

Model: Touareg 3.0 V6 e-Hybrid 4Motion Aut. Elegance

VIN: WVGZZZCRZND007051



Vehicle details

Manufacturer / Type / Model / Equipment

Volkswagen Touareg 3.0 V6 e-Hybrid 4Motion Aut. Elegance

Vehicle Identification number WVGZZZCRZND007051

Mileage (Read) 123,576 km

First registration 2 Nov 2021

Number of holders 1

Power / Engine displacement 250 kw / 2,995 ccm

Fuel type / Cylinder Hybr.B/E ext.auf1 / 6

Gearbox / Number of gears Automatic / 8

Type of drive All-wheel drive

Type of vehicle SUV

Colour / colour code Deep Black Perleffekt

Doors / Seats 5 / 5

Upholstery type Leather

Colour of upholstery Black

readiness to drive Roadworthy



Vehicle details			
Maintenance booklet / proof	digital proof / complete	Next maintenance in	10,600 km
Last service on / at	11/2025 at 111,726 km		
Key is / should be	2 / 2	FZG documents	ZB#2 (B) was available (copy), ZB#1 (S) was not available.
		Letter No.	GH512602
Previous damage / Accident	None detectable	Repainting	None detectable
Inspection conditions	sufficient	Lifting equipment / pit	yes
Test drive	Not performed	Engine function test	Performed
readiness to drive	Roadworthy		
Manufacturer key number/ type code number	0603 / CMW 00036		
Emission standard	EURO6;WLTP;AP;PI/CI; M, N1 I	fine dust sticker	
Permitted total weight	3,010 kg	Empty weight	

Tyres

Mounted tyres				
#	Tyre size	Type of tyre	Manufacturer	Tread depth
1)	255/55 R19 111H	Winter tyres on Light alloy	Continental	7mm / 7mm
2)	255/55 R19 111H	Winter tyres on Light alloy	Continental	7mm / 7mm

Additional tyres				
#	Tyre size	Type of tyre	Manufacturer	Tread depth
1)	285/40 R21 109Y	Summer tyres on Light alloy	Bridgestone	7mm / 7mm
2)	285/40 R21 109Y	Summer tyres on Light alloy	Bridgestone	7mm / 7mm

Replacement				
Typ	Tyre size	Type of tyre	Manufacturer	Tread depth
	Tirefit	Expiration date 06/2025		

Legend: Tread depth information for the left tire is listed first, for the right tire it is listed second on the axle in the direction of travel.



Equipment

Standard equipment

- Airbag for driver and front passenger, with front passenger airbag deactivation
- white ambient lighting
- Outdoor sound, soundbox
- Electrically folding, adjustable, heated and dimming exterior mirrors (including passenger side mirror lowering)
- Silver anodized roof rails
- Display: Digital Cockpit Pro, multicolor, various selectable info profiles
- Electronic Stability Program (ESP) (Anti-lock Braking System - Electronic Brakeforce Distribution)
- Driving profile selection (possibility to set different vehicle settings: Normal, Sport, Eco, Individual - adaptable vehicle systems include: engine, adaptive chassis control DCC, DSG, steering, start-stop system, cornering lights and "Dynamic Light Assist", automatic distance control ACC, air conditioning)
- Rear window heated
- Air conditioning "Air Care Climatronic" (active combination filter - 4-zone climate control - rear controls)
- Front headrests (safety-optimized)
- LED headlights with LED daytime running lights
- Illuminated makeup mirrors in the sun visors
- front center armrest
- Navigation system "Discover Pro" (23.4 cm touchscreen - dual tuner with phase diversity for optimal radio reception - Radio Data System (RDS) - radio station logos - MP3 playback - USB-C interface with Apple compatibility - 4 x 20 watt output power - map with 2D display - traffic sign display - points of interest - telephone interface - App-Connect Wireless - voice control - DAB+ digital radio reception)
- Otto particulate filter
- Panoramic tilt/slide sunroof with panoramic roof at the rear
- Parking assist system "Park Assist" with reversing camera "Rear Assist" (incl. parking aid)
- LED taillights
- Locking system: Luggage compartment lid with electric opening and closing (luggage compartment cover with electric opening - closing aid for luggage compartment lid)
- Power steering
- Seats: Front seats electrically adjustable, driver's seat with longitudinally adjustable thigh support
- Lane keeping assistant "Lane Assist"
- Bumper and door lower sections in body color, with chrome trim (air intakes with chrome louvers)
- Traffic sign recognition
- Electronic immobilizer
- Airbag, head airbag system including front side airbags (for front and rear passengers)
- Adaptive Cruise Control (ACC) "stop & go" including speed limiter
- Outdoor temperature display
- third brake light
- Decorative inlays: Brushed aluminum 45° (for instrument panel and door trim)
- Tachometer
- Automatic headlight control with LED daytime running lights ("Coming home" and "Leaving home" function)
- High beam control "Light Assist"
- Windscreen made of laminated safety glass, heat and sound insulating
- Pedestrian protection measures expanded
- Luggage compartment cover with electric opening
- Transmission: 8-speed automatic Tiptronic
- Rear window wiper with intermittent function (and washer nozzle)
- Rear headrests (3)
- Mode 3 Type 2 charging cable, 16 A
- Steering wheel: Multifunction steering wheel in leather, with paddle shifters
- Fatigue detection
- Mains charging cable for household socket
- Non-smoking version (12V socket front and rear)
- Emergency braking assistant "Front Assist" (detects critical distance situations and helps to shorten the stopping distance - warns the driver visually and audibly in dangerous situations as well as with a preventive brake jolt)
- Emergency call service (no registration required, service is activated upon delivery)
- Electronic parking brake
- Wheels: Tire Mobility Set (12-volt compressor and tire sealant)
- Rear seat bench and backrest asymmetrically split, foldable, longitudinally adjustable (backrest angle adjustable)
- Keyless start system (without safe locking)
- Seat belts: Three-point automatic seat belts (3 three-point automatic seat belts in the rear - three-point automatic seat belts in the front with height adjustment and belt tensioner - warning tone and light for unfastened seat belts in the front and rear)
- Textile floor mats front and rear
- Prepared for "Guide & Inform" and "Security & Service"
- Central locking including remote control



Extra equipment

- Airbag: Knee airbag on driver and front passenger side, side airbags for outer rear seats (airbag for driver and front passenger, with front passenger airbag deactivation, incl. knee airbag on driver & front passenger side - side airbags for the outer rear seats, incl. front side airbags and head airbag system)
- Paint finish: Pearl effect
- Air suspension with automatic level control, height adjustment and electronic damper control (driving profile selection including "Comfort" driving profile)
- Package: Driver Assistance Package "Plus" (Adaptive Cruise Control ACC "stop & go", with speed limiter - Three-point automatic front seat belts with height adjustment and belt tensioners, for proactive occupant protection system - Intersection Assist - Proactive occupant protection system - Driving Assistant "Travel Assist" - Lane Keeping Assist "Lane Assist" - Traffic Jam Assist and "Emergency Assist" - Lane Change Assist "Side Assist")
- Package: Memory package (electrically adjustable, folding, heated and dimming exterior mirrors with memory function - electrically adjustable front seats, driver's seat with memory function and longitudinally adjustable thigh support)
- Package: Parking Assistance (Extension to Parking Assistance "Park Assist Plus" - Parking Steering Assistance "Park Assist" incl. Parking Aid - Surround View "Area View" incl. Rear View Camera "Rear View")
- Wheels: Light alloy (4) "Suzuka" 9.5 J x 21, in Dark Graphite, Volkswagen R (Tires 285/40/ R 21 - Wheel locks with enhanced theft protection - Surface polished)
- Wheels: Winter wheels (4) (additional), alloy wheels, "Osorno" (4 alloy wheels 8 J x 19 - winter tires 255/55 R 19 H)
- Premium textile floor mats, front and rear, set of 4
- Electrically folding towbar including trailer maneuvering assistant "Trailer Assist"
- Headliner in Soul Black
- Anti-theft alarm system (electronic immobilizer - interior monitoring - backup horn - tow-away protection)
- Display: Head-up display
- Lighting: IQ.LIGHT - LED matrix headlights (Dynamic Light Assist high beam control for LED matrix headlights - LED matrix headlights with LED daytime running lights - LED taillights with dynamic turn signals - headlight cleaning system)
- Package: Comfort package "Keyless Access" (luggage compartment cover with electric opening - luggage compartment lid with sensor-controlled opening and time-delayed electric closing, with remote unlocking - keyless locking and starting system "Keyless Access" with safe locking - closing aid for luggage compartment lid)
- Package: Leather "Savona" with ergoComfort front seats (ergoComfort front seats - remote release for rear seat backrest - pneumatically adjustable lumbar support in front - safety-optimized front headrests - seat center panels and inner side bolsters of the front seats and outer rear seats in leather "Savona")
- Radio accessories: Sound system "DYNAUDIO Consequence" (16-channel amplifier - 12+1 speakers - subwoofer - 730 watts total power)
- Tire pressure monitoring system (informs the driver about the current tire pressure before and during the journey - the driver is informed if the tire pressure is too low or if there is a rapid loss of pressure)
- Windows: Laminated safety glass, noise-reducing, for side windows (rear and rear side windows tinted)
- Sunshade roller blind for the rear door windows

Brief expert findings

Documents submitted	At the time of the inspection, the vehicle registration certificate Part 2 (title) was available, but the vehicle registration certificate Part 1 (document) was not. (Copy)
VIN comparison	The vehicle identification number (VIN) was read from the vehicle and its conformity with the submitted documents was confirmed by the undersigned during the inspection.
Inspection	The inspection conditions were sufficient for the assessment of the vehicle. Lifting equipment and/or a pit were available for examining the vehicle.
Test drive	No test drive/shunting maneuver was carried out during the inspection of the vehicle.
Engine function test	An engine test run was performed.
readiness to drive	The vehicle was roadworthy at the time of inspection.



Value reducing factors

No.	Component group	Description
1	Equipment	Tirefit filler - Expired - Replace
2	Gearbox	Gearbox (Ölverlust) - Leaking - Perform diagnosis
3	Door - front left side	Door edge - Scratch(es) - Smart repair
4	Side panel - rear left side	Side panel - Scratch(es) - Smart repair
5	Bonnet	Bonnet - dent(s) - Smooth repair work
6	Side panel - rear right side	Side panel - Scratch(es) - Smart repair
7	2nd wheel set	1 alloy rim - Scratch(es) - Loss in value
8	2nd wheel set	1 alloy rim - Scratch(es) - Loss in value
9	Rear bumper	Rear bumper - Scratch(es) - Paint
10	2nd wheel set	1 alloy rim - Scratch(es) - Replace
11	Front bumper	Front bumper (Zusätzlich Zierleiste mitte gebrochen) - Broken / torn - Replace

Wear and tear

No.	Component group	Description
1	Trim / covers	Boot lid - interior trim - Scratch(es) - No deduction
2	Door - rear right side	Door - Scratch(es) - No deduction
3	Vehicle glazing	Windscreen - Stone chips - No deduction
4	Mudguard - right side	Mudguard - right side - Stone chips - No deduction
5	Door - rear left side	Door edge - Scratch(es) - No deduction

The vehicle shows signs of wear and tear commensurate with its age and use.

Order/Scope of Order

An order was placed to prepare a sales report for the described vehicle. This report includes the following:

- Description of key vehicle information
- Documentation of equipment features
(*Delivery by third-party service providers*)
- Documentation of damage, defects, missing parts
- Documentation of prior damage, unrepaired prior damage, repainting
- A brief visual or functional inspection of the equipment details, if possible.
(*Functional testing of driver assistance systems is not included in the scope of services!*)
- a photographic documentation of the vehicle



Basis for the order

This product is based on the guidelines for vehicle returns and valuations published by Alphabet Fleet GmbH. The expert makes the specific findings in each individual case objectively, within the framework of the prescribed standards, based on their own expertise.

The vehicle inspection takes place in a fully assembled, unassembled state.

Damage or defects that can only be detected during disassembly/diagnostic work or through further investigation remain within the realm of prognostic risk. An increased risk exists due to concealed defects caused by fraudulent misrepresentation and which were not identifiable by the expert.

Damage or defects resulting from normal use or wear and tear of the vehicle will be accepted in accordance with the applicable standard.

There was no explicit identification or monetary consideration of the expected features within the product.

Features which, in their nature and extent, slightly exceed normal use but do not constitute unacceptable damage, will be documented and indicated as signs of wear, if applicable.

Damage or defects that, according to the applicable standard, can no longer be attributed to normal use or wear and tear are listed under "Value Reducing Factors" in the product description.

Depending on the product specification, a monetary ID can be provided. If this takes place, the costs can be 100% d or pro rata depending on the vehicle's age and mileage.

Previous damages

No apparent prior damage that had been repaired could be found on the vehicle.



Figure 1: Diagonal front (left)



Figure 2: Diagonal front (right)



Figure 3: Diagonal rear (left)



Figure 4: Diagonal rear (right)



Figure 5: Interior - front

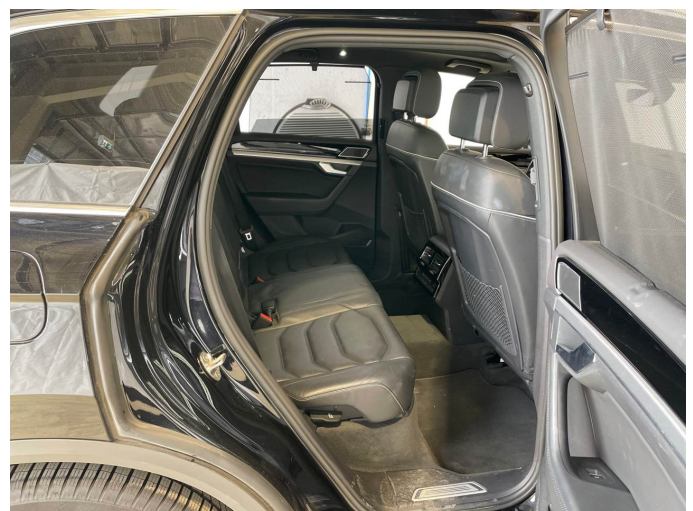


Figure 6: Interior - rear



Figure 7: Instrument cluster



Figure 8: Instrument panel



Figure 9: Interior 360° view



Figure 10: Cargo area

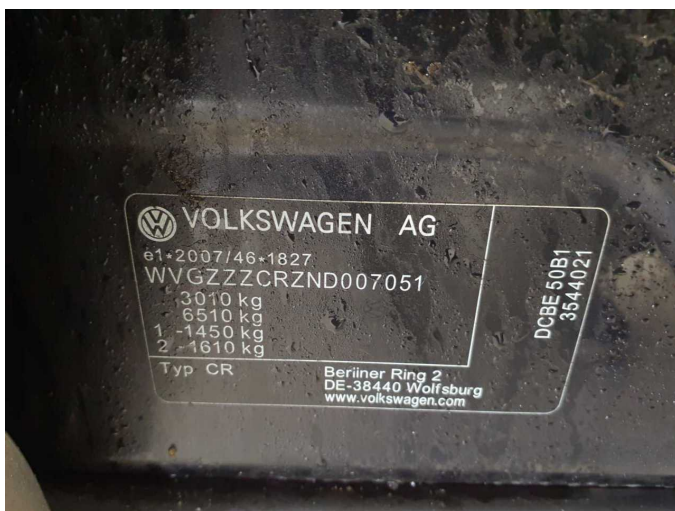


Figure 11: VIN



Figure 12: Mounted tyres



Figure 19: Misc.



Figure 20: Misc.



Figure 21: Misc.



Figure 22: Misc.



Figure 23: Misc.



Figure 24: Misc.



Figure 25: Misc.



Figure 26: Misc.



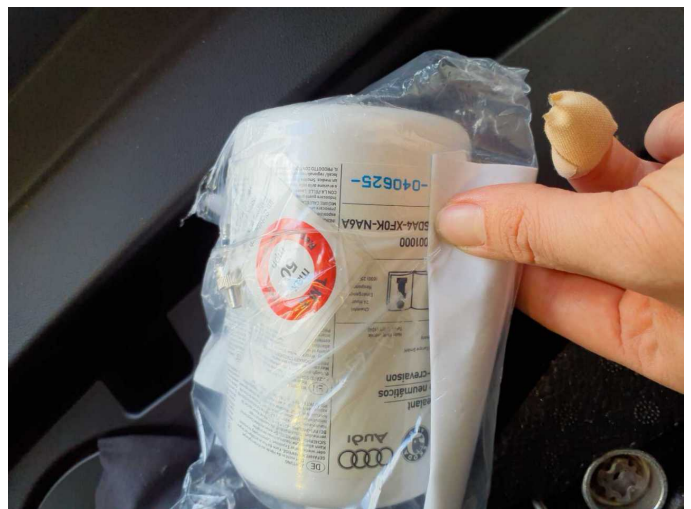
Figure 27: Misc.



Figure 28: Misc.



Figure 29: Misc.



Damage 1: Equipment: Tirefit filler - Expired - Replace



Damage 2: Gearbox: Gearbox (Ölverlust) - Leaking - Perform diagnosis



Damage 2: Gearbox: Gearbox (Ölverlust) - Leaking - Perform diagnosis



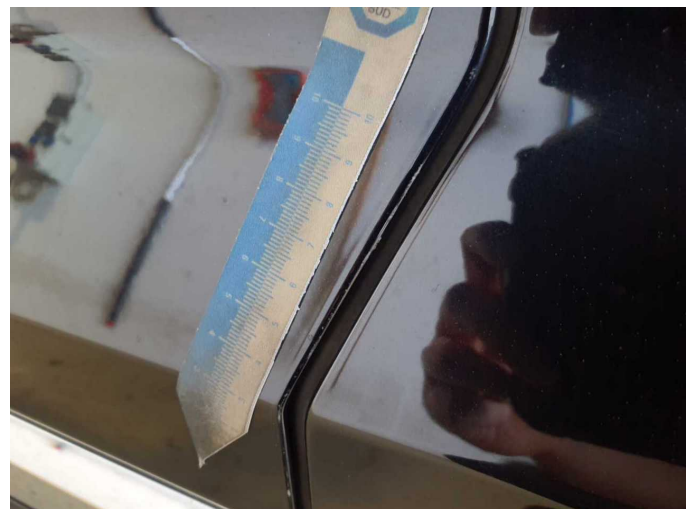
Damage 2: Gearbox: Gearbox (Ölverlust) - Leaking - Perform diagnosis



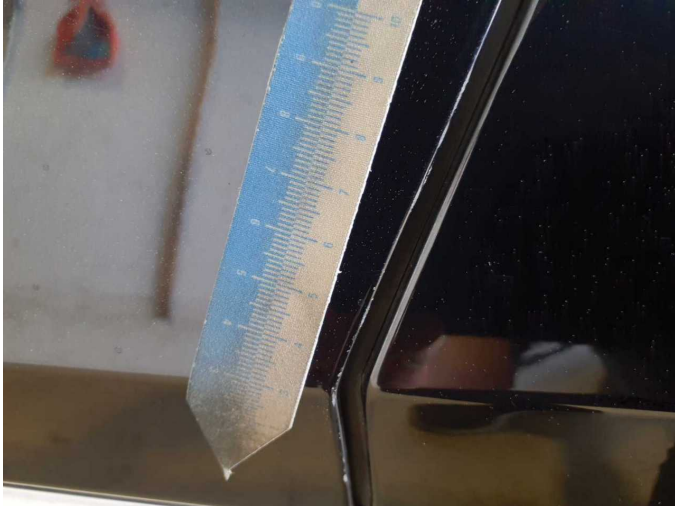
Damage 2: Gearbox: Gearbox (Ölverlust) - Leaking - Perform diagnosis



Damage 3: Door - front left side: Door edge - Scratch(es) - Smart repair



Damage 3: Door - front left side: Door edge - Scratch(es) - Smart repair



Damage 3: Door - front left side: Door edge - Scratch(es) - Smart repair



Damage 4: Side panel - rear left side: Side panel - Scratch(es) - Smart repair



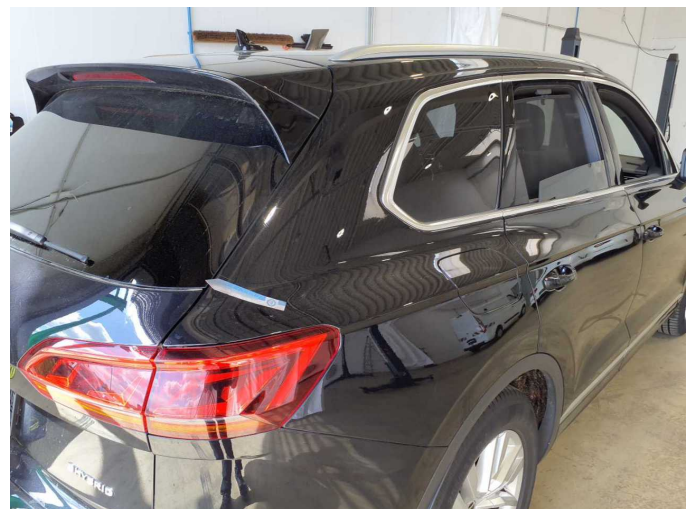
Damage 4: Side panel - rear left side: Side panel - Scratch(es) - Smart repair



Damage 5: Bonnet: Bonnet - dent(s) - Smooth repair work



Damage 5: Bonnet: Bonnet - dent(s) - Smooth repair work



Damage 6: Side panel - rear right side: Side panel - Scratch(es) - Smart repair



Damage 6: Side panel - rear right side: Side panel - Scratch(es) - Smart repair



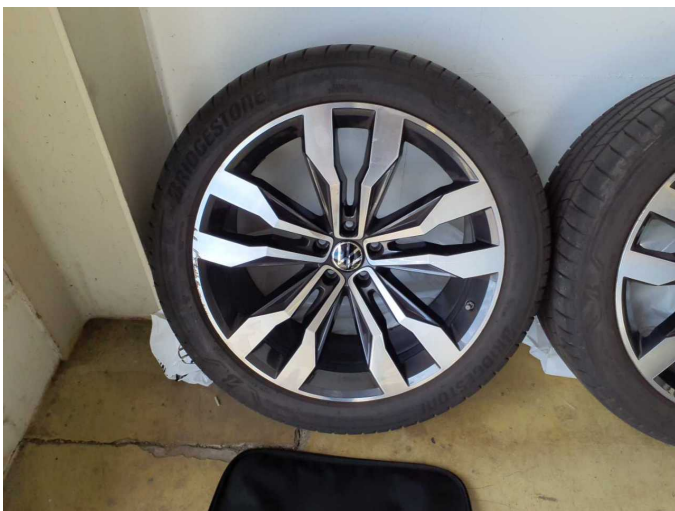
Damage 7: 2nd wheel set: 1 alloy rim - Scratch(es) - Loss in value



Damage 7: 2nd wheel set: 1 alloy rim - Scratch(es) - Loss in value



Damage 7: 2nd wheel set: 1 alloy rim - Scratch(es) - Loss in value



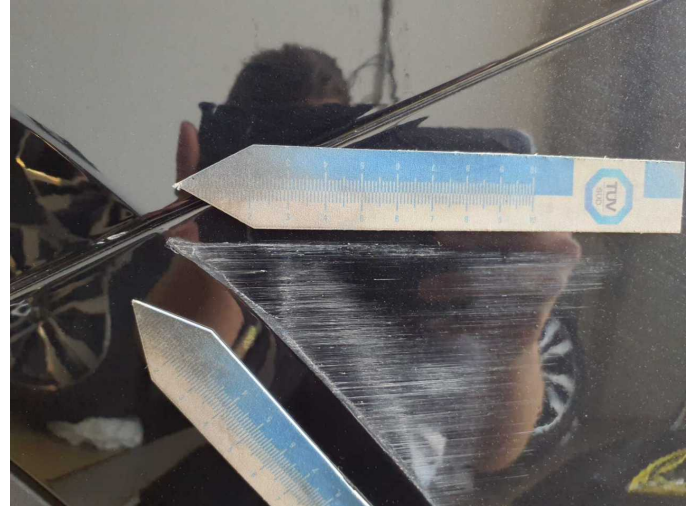
Damage 8: 2nd wheel set: 1 alloy rim - Scratch(es) - Loss in value



Damage 8: 2nd wheel set: 1 alloy rim - Scratch(es) - Loss in value



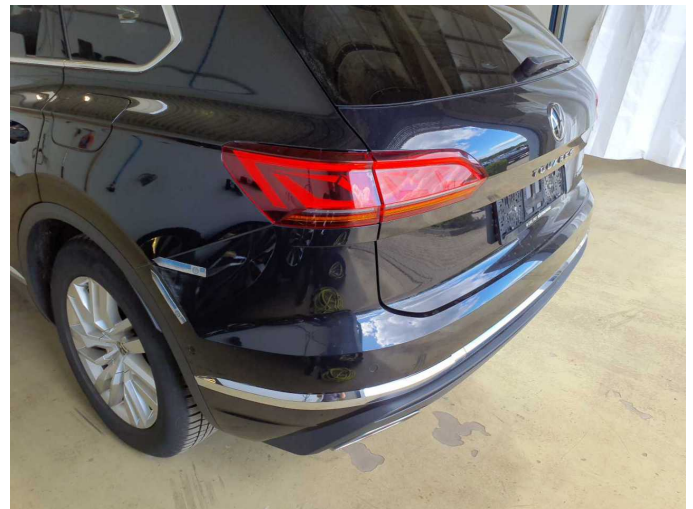
Damage 9: Rear bumper: Rear bumper - Scratch(es) - Paint



Damage 9: Rear bumper: Rear bumper - Scratch(es) - Paint



Damage 9: Rear bumper: Rear bumper - Scratch(es) - Paint



Damage 9: Rear bumper: Rear bumper - Scratch(es) - Paint



Damage 10: 2nd wheel set: 1 alloy rim - Scratch(es) - Replace



Damage 10: 2nd wheel set: 1 alloy rim - Scratch(es) - Replace



Damage 10: 2nd wheel set: 1 alloy rim - Scratch(es) - Replace



Damage 11: Front bumper: Front bumper (Zusätzlich Zierleiste mitte gebrochen) - Broken / torn - Replace



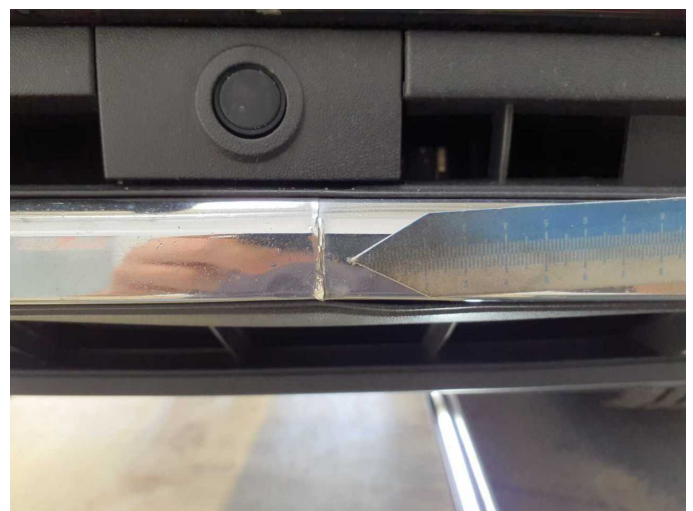
Damage 11: Front bumper: Front bumper (Zusätzlich Zierleiste mitte gebrochen) - Broken / torn - Replace



Damage 11: Front bumper: Front bumper (Zusätzlich Zierleiste mitte gebrochen) - Broken / torn - Replace



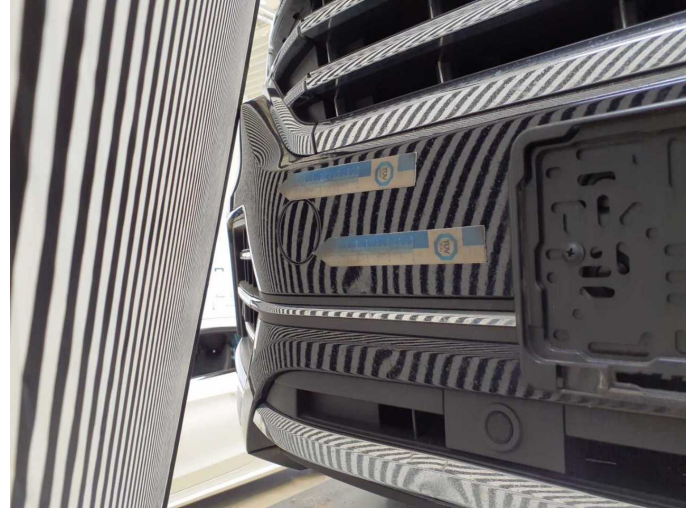
Damage 11: Front bumper: Front bumper (Zusätzlich Zierleiste mitte gebrochen) - Broken / torn - Replace



Damage 11: Front bumper: Front bumper (Zusätzlich Zierleiste mitte gebrochen) - Broken / torn - Replace



Damage 11: Front bumper: Front bumper (Zusätzlich Zierleiste mitte gebrochen) - Broken / torn - Replace



Damage 11: Front bumper: Front bumper (Zusätzlich Zierleiste mitte gebrochen) - Broken / torn - Replace



Damage 11: Front bumper: Front bumper (Zusätzlich Zierleiste mitte gebrochen) - Broken / torn - Replace



Damage 11: Front bumper: Front bumper (Zusätzlich Zierleiste mitte gebrochen) - Broken / torn - Replace



Wartungshistorie

(gemäß Auftraggeber Informationen)

Fahrgestellnummer: WVGZZZCRZND007051
Hersteller / Modell: VOLKSWAGEN VOLKSWAGEN Touareg 3.0 V6 e-Hybrid 4Motion
Aut. Elegance

Datum	KM-Stand	Beschreibung
05.11.2025	111.726	Bremsflüssigkeit; Bremsflüssigkeit ern; Motoröl b. Wartung; Ölfilter ern; Regelwartungsdienst; Wartung Sonstiges
19.12.2024	84.837	HU + AU; Luftfiltereinsatz ern; Regelwartungsdienst; Wartung Sonstiges; Zündkerzen ern
02.09.2024	75.000	Motoröl b. Wartung; Ölfilter ern; Ölwechsel; Wartung Sonstiges
25.01.2024	61.478	Bremsflüssigkeit; Bremsflüssigkeit ern; Regelwartungsdienst
26.07.2023	44.807	Motoröl b. Wartung; Ölfilter ern; Ölwechsel; Wartung Sonstiges
06.03.2023	30.754	Regelwartungsdienst
03.06.2022	14.831	Motoröl b. Wartung; Ölfilter ern; Ölwechsel; Wartung Sonstiges