

Expertise

Protocol number: 46361906
Order No. / Reference: 26412139
Inspection date: 6 Jul 2026

Manufacturer: Ford

Model: Transit Custom 280 L1H1 LKW VA Trend

VIN: WF0YXXTTGYNT09164



Vehicle details

Manufacturer / Type / Model / Equipment

Ford Transit Custom 280 L1H1 LKW VA Trend

Vehicle Identification number WF0YXXTTGYNT09164

Mileage (Read) 137,842 km

First registration 23 Sept 2022

Number of holders 1

Power / Engine displacement 96 kw / 1,995 ccm

Fuel type / Cylinder Diesel / 4

Gearbox / Number of gears Manual / 6

Type of drive Front drive

Type of vehicle Van

Colour / colour code Frost-Weiß

Doors / Seats 4 / 3

Upholstery type Cloth

Colour of upholstery Black-Anthracite

Vehicle with smoke odor no



Vehicle details

Maintenance booklet / proof	digital evidence / incomplete	Next maintenance in	0 km
Last service on / at	07/2025 at 94,859 km		
Key is / should be	2 / 2	FZG documents	ZB#2 (B) was available (copy), ZB#1 (S) was not available.
		Letter No.	GP435054
Previous damage / Accident	None detectable	Repainting	None detectable
Inspection conditions	sufficient	Lifting equipment / pit	yes
Test drive	Not performed	Engine function test	Performed
Manufacturer key number/ type code number	8566 / BMU 07069		
Emission standard	EURO6;WLTP;AR;PI/CI;N1 III, N2	fine dust sticker	
Permitted total weight	2,800 kg	Empty weight	

Tyres

Mounted tyres

#	Tyre size	Type of tyre	Manufacturer	Tread depth
1)	215/65 R15 104T	Summer tyres on Steel rim with wheel cover	Goodyear	4mm / 4mm
2)	215/65 R15 104T	Summer tyres on Steel rim with wheel cover	Goodyear	4mm / 4mm

Additional tyres

#	Tyre size	Type of tyre	Manufacturer	Tread depth
1)	215/65 R15 104T	Winter tyres on Steel	Goodyear	5mm / 5mm
2)	215/65 R15 104T	Winter tyres on Steel	Goodyear	5mm / 5mm

Replacement

Typ	Tyre size	Type of tyre	Manufacturer	Tread depth
E	215/65 R15 104T	Summer tyres on Steel	Goodyear	6 mm

Legend: Tread depth information for the left tire is listed first, for the right tire it is listed second on the axle in the direction of travel.



Equipment

Standard equipment

- 1 battery
- Anti-lock braking system with electronic brake force distribution (EBD)
- roof, flat
- Double-leaf rear door with 180° opening angle (without window)
- Electronic Stability Program (ESP) with Traction Control System (TCS)
- FordPass Connect
- Generator, 240 A
- Cruise control including imitation leather steering wheel
- Lockable glove compartment with lid
- Front air conditioning
- Paint finish: Solid color paint
- Cargo area floor: Vinyl floor covering, sealed, "Easy Clean"
- Emergency brake assist including emergency brake light
- Front and rear parking pilot system including fog lights
- Radio: Audio system 13 additionally with DAB/DAB+
- Wheels/Tires: Spare wheel, steel wheel
- Headlights: Halogen projector headlights
- Sliding door: Sliding door, right
- Mud flaps front and rear
- Half-height side wall cladding
- Seat belts
- Start-stop system
- Power outlet: 12-volt connection
- Immobiliser
- Central locking with remote control

Extra equipment

- LED lights in the cargo area
- Radio: Audio System 24: Ford audio system including Ford SYNC 3 with AppLink, DAB/DAB+, navigation system. (Radio (FM/AM) 8" touchscreen multifunction display (20.32 cm), 4 speakers, FordPass Connect Wi-Fi hotspot, integrated control panel and audio remote control on the steering wheel, Ford SYNC 3 with touchscreen (hands-free system with voice control, SMS readout/sending function, Bluetooth, Emergency Assistance...), AppLink (advanced voice control, privacy mode, Android Auto and Apple CarPlay support, capacitive touchscreen technology,...), dynamic navigation, lane guidance, road map for Western Europe)

- Driver's side airbag
- Exterior mirrors, electrically adjustable and heated
- On-board computer
- Headliner in driver's cab
- Tachometer
- Third brake light
- Front electric windows
- Ford Easy Fuel
- Warranty: 2-year Ford new car warranty including Ford Assistance mobility guarantee
- Transmission: 6-speed transmission
- Interior lighting with delay circuit
- Fuel tank 70 l
- Cargo area lighting with activatable switch-off delay
- Steering column, adjustable in height and reach
- Package: Style-Color Package
- Particulate filter: diesel particulate filter
- Wheel trims
- Wheels: Steel wheels 6.5 J x 15 with 215/65 R 15 tires
- Sliding door entry light automatically illuminates when the door is opened
- Side protection strips
- Power steering
- Seats: Seat package 13 - partition (load-through flap), without window (Custom Truck Trend)
- Lashing eyes 8
- Heat-insulating glazing, lightly tinted
- Auxiliary heater, electric

- Airbag (passenger side)
- All-weather floor mats, front
- Fire extinguisher 1 kg
- Package: Service Line (shelving systems (left and right) - vise - ventilation for transporting gas cylinders - HDF wall cladding - screen-printed wooden floor in the cargo area (the standard lashing eyes are omitted))
- Power outlet: 12-volt connection in the cargo area (D-pillar)
- Rear swing door without window (without interior mirror)
- Voltage converter (230 V/150 Watt (socket))
- Winter complete wheels steel



Brief expert findings

Documents submitted	At the time of the inspection, the vehicle registration certificate Part 2 (title) was available, but the vehicle registration certificate Part 1 (document) was not. (Copy)
VIN comparison	The vehicle identification number (VIN) was read from the vehicle and its conformity with the submitted documents was confirmed by the undersigned during the inspection.
Inspection	The inspection conditions were sufficient for the assessment of the vehicle. Lifting equipment and/or a pit were available for examining the vehicle.
Test drive	No test drive/shunting maneuver was carried out during the inspection of the vehicle.
Engine function test	An engine test run was performed.

Value reducing factors

No.	Component group	Description
1	Misc.	Inspection / maintenance - Due - Replace

Wear and tear

No.	Component group	Description
1	Body	Body - Scratch(es) - No deduction
2	Vehicle glazing	Windscreen - Stone chips - No deduction
3	Boot lid / rear door	Boot lid (Flugrost) - Corrosion - No deduction
4	Door - front right side	Door (Flugrost) - Corrosion - No deduction
5	Body	Body - dent(s) - No deduction
6	Door - front left side	Door (Flugrost) - Corrosion - No deduction

The vehicle shows signs of wear and tear commensurate with its age and use.

Order/Scope of Order

An order was placed to prepare a sales report for the described vehicle. This report includes the following:

- Description of key vehicle information
- Documentation of equipment features
(*Delivery by third-party service providers*)
- Documentation of damage, defects, missing parts
- Documentation of prior damage, unrepaired prior damage, repainting
- A brief visual or functional inspection of the equipment details, if possible.
(*Functional testing of driver assistance systems is not included in the scope of services!*)
- a photographic documentation of the vehicle



Basis for the order

This product is based on the guidelines for vehicle returns and valuations of light commercial vehicles published by Alphabet Fleet Management GmbH. The expert makes the specific findings in each individual case objectively, within the framework of the prescribed standards, based on their own expertise.

The vehicle inspection takes place in a fully assembled, unassembled state.

Damage or defects that can only be detected during disassembly/diagnostic work or through further investigation remain within the realm of prognostic risk. An increased risk exists due to concealed defects caused by fraudulent misrepresentation and which were not identifiable by the expert.

Damage or defects resulting from normal use or wear and tear of the vehicle will be accepted in accordance with the applicable standard.

There was no explicit identification or monetary consideration of the expected features within the product.

Features which, in their nature and extent, slightly exceed normal use but do not constitute unacceptable damage, will be documented and indicated as signs of wear, if applicable.

Damage or defects that, according to the applicable standard, can no longer be attributed to normal use or wear and tear are listed under "Value Reducing Factors" in the product description.

Depending on the product specification, a monetary ID can be provided. If this takes place, the costs can be 100% d or pro rata depending on the vehicle's age and mileage.

Previous damages

No apparent prior damage that had been repaired could be found on the vehicle.



Figure 1: Diagonal front (left)



Figure 2: Diagonal front (right)



Figure 3: Diagonal rear (left)



Figure 4: Diagonal rear (right)



Figure 5: Interior - front



Figure 6: Interior - rear



Figure 7: Instrument cluster



Figure 8: Instrument panel



Figure 9: Interior 360° view



Figure 10: Cargo area



Figure 11: VIN

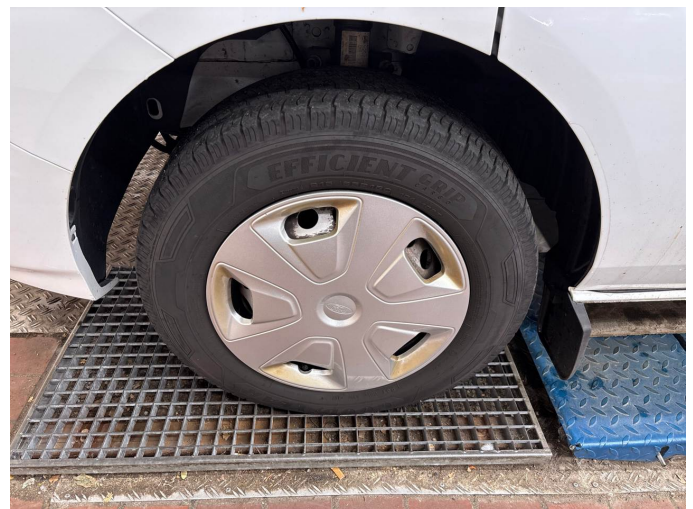


Figure 12: Mounted tyres

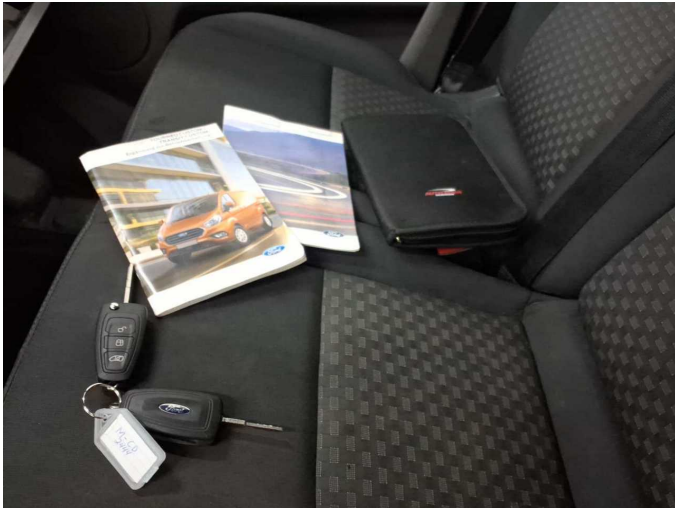


Figure 13: Documents

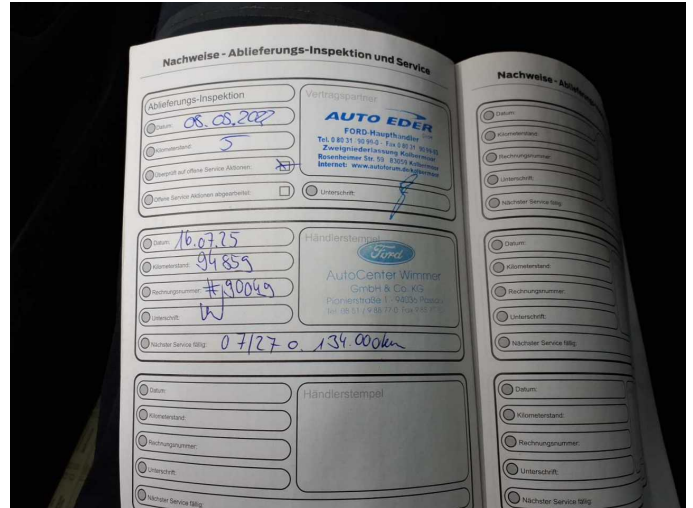


Figure 14: Documents



Figure 15: Documents



Figure 16: Additional tyres



Figure 17: Additional tyres



Figure 18: Navigation



Figure 19: Misc.

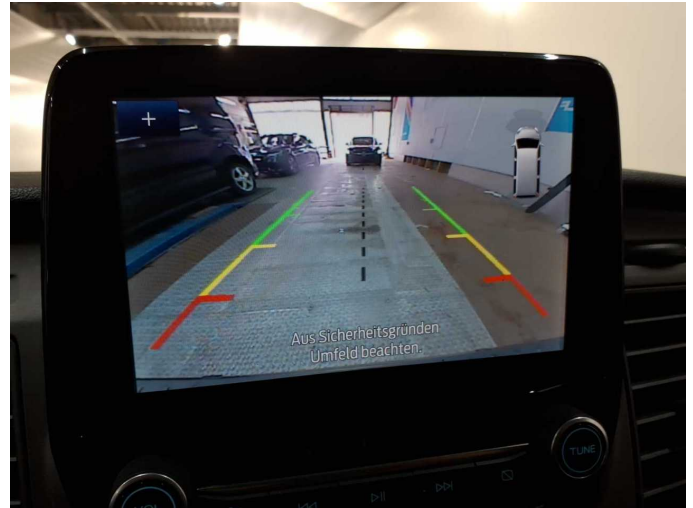


Figure 20: Misc.



Figure 21: Misc.



Figure 22: Misc.

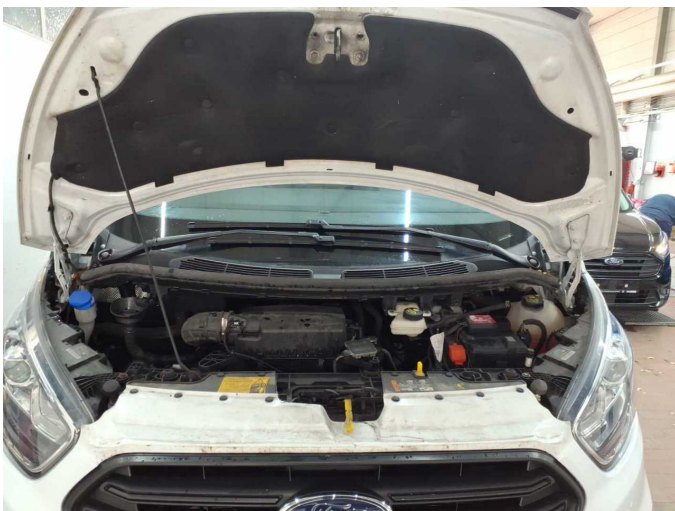


Figure 23: Misc.



Figure 24: Misc.



Figure 25: Misc.



Figure 26: Misc.



Figure 27: Misc.



Figure 28: Misc.



Figure 29: Misc.



Damage 1: Misc.: Inspection / maintenance - Due - Replace



Wartungshistorie

(gemäß Auftraggeber Informationen)

Fahrgestellnummer: WF0YXXTTGYNT09164

Hersteller / Modell: FORD FORD Transit Custom 280 L1H1 LKW VA Trend

Datum	KM-Stand	Beschreibung
08.01.2026	121.695	Bremse Sonstiges; Bremsklötze hinten; Bremsscheiben + Klötze h; Bremsscheiben hinten; Handbremsseil ern
16.07.2025	94.859	Luffiltereinsatz ern; Motoröl b. Wartung; Ölfilter ern; Regelwartungsdienst; Wartung Sonstiges
07.03.2025	75.128	Bremse Sonstiges; Bremsklötze vorne; Bremsscheiben + Klötze v; Bremsscheiben vorne
24.10.2024	52.976	AU
09.08.2024	47.947	Bremsklötze hinten; Bremsscheiben hinten
02.08.2024	47.947	Bremsflüssigkeit; Bremsflüssigkeit ern; Motoröl b. Wartung; Ölfilter ern; Regelwartungsdienst; Wartung Sonstiges