

Expertise

Protocol number: 46351781
Order No. / Reference: 26584390
Inspection date: 2 Jul 2026

Manufacturer: Audi

Model: A3 35 TDI Sportback S tronic S line

VIN: WAUZZZGY6NA062224



Vehicle details

Manufacturer / Type / Model / Equipment

Audi A3 35 TDI Sportback S tronic S line

Vehicle Identification number WAUZZZGY6NA062224

Mileage (Read) 108,114 km

First registration 19 Apr 2022

Number of holders 1

Power / Engine displacement 110 kw / 1,968 ccm

Fuel type / Cylinder Diesel / 4

Gearbox / Number of gears Automatic / 7

Type of drive Front drive

Type of vehicle Saloon car

Colour / colour code Mythossschwarz Metallic

Doors / Seats 5 / 5

Upholstery type Leather

Colour of upholstery Grey



Vehicle details			
Maintenance booklet / proof	digital proof / complete	Next maintenance in	11,900 km
Last service on / at	03/2026 at 103,890 km		
Key is / should be	2 / 2	FZG documents	ZB#2 (B) was available (copy), ZB#1 (S) was not available.
		Letter No.	GJ052301
Previous damage / Accident	Detectable	Repainting	None detectable
Inspection conditions	sufficient	Lifting equipment / pit	yes
Test drive	Not performed	Engine function test	Performed
Manufacturer key number/ type code number	0588 / BZQ 01007		
Emission standard	EURO6;WLTP;AP;PI/CI; M, N1 I	fine dust sticker	
Permitted total weight	1,965 kg	Empty weight	

Tyres

Mounted tyres				
#	Tyre size	Type of tyre	Manufacturer	Tread depth
1)	225/45 R18 92Y	Summer tyres on Light alloy	Goodyear	5mm / 5mm
2)	225/45 R18 92Y	Summer tyres on Light alloy	Goodyear	5mm / 5mm
Additional tyres				
#	Tyre size	Type of tyre	Manufacturer	Tread depth
1)	205/55 R16 91H	Winter tyres on Light alloy	Goodyear	5mm / 5mm
2)	205/55 R16 91H	Winter tyres on Light alloy	Goodyear	5mm / 5mm
Replacement				
Typ	Tyre size	Type of tyre	Manufacturer	Tread depth
	Tirefit	Expiration date 01/2026		

Legend: Tread depth information for the left tire is listed first, for the right tire it is listed second on the axle in the direction of travel.



Equipment

Standard equipment

- Airbag for driver and front passenger
- Anti-lock braking system (ABS)
- Traction control ASR
- Audi pre sense front
- Exterior mirror housings in body color
- Headliner in steel grey fabric
- Additive-free diesel particulate filter (DPF)
- Tachometer
- Rear parking sensors
- Electric auxiliary air heater
- Electromechanical parking brake
- Electronic Stability Control (ESC)
- Electric windows front and rear
- front and rear floor mats
- Speed limiter
- rear window wiper
- Electrically operated child safety lock
- Manual air conditioning
- Rear headrests (3)
- Light and rain sensor
- Radio: MMI Radio plus
- Tire repair kit
- Electromechanical power steering
- Seats: Standard front seats
- Lane Departure Warning
- 12-volt power outlet in the rear
- Daytime running light
- Electronic immobilizer
- Airbag: Front side airbags with head airbag system and front interaction airbag
- Audi connect emergency call & service m.connect remote & control
- third brake light
- Roof edge spoiler S
- Digital instrument cluster - fully digital instrument cluster in 10.25 inches
- Door sill trims with aluminum inlay at the front, illuminated, with S lettering
- Electronic Differential Lock (EDS)
- Chassis: Sport chassis
- Remote key (without Safe-Lock)
- Removable luggage compartment cover
- Transmission: S tronic 7-speed
- Interior lighting
- i-Size child seat attachment and top tether for the outer rear seats
- Front headrests
- Non-smoking version
- Tire pressure monitoring system
- Headlight
- 3-point automatic seat belts
- Seats: Rear seat backrest foldable
- Start-stop system
- 12V socket
- Glazing: Green tinted thermal insulation glazing



Extra equipment

- Adaptive Cruise Control (S tronic) (Using a radar sensor, it detects vehicles ahead within the system's limits and maintains a largely constant speed and distance within the control range. The speed range is between 0 and 210 km/h. The control range is 30 to 210 km/h. In stop-and-go traffic, vehicles can brake to a standstill and, under certain conditions, automatically accelerate again. The distance can be adjusted in 5 steps via Audi drive select or the ACC menu.)
- Camera-based traffic sign recognition (Supports the driver by displaying traffic signs detected within the system's limits, such as speed limits, no-overtaking zones, and temporary speed restrictions, which are within the detection range of the front camera. The traffic sign recognition is displayed automatically in the digital instrument cluster or in the optional Audi virtual cockpit.)
- Electrically adjustable, heated and folding exterior mirrors, automatically dimming on both sides (with integrated LED turn signal and curb view function for the passenger-side exterior mirror - mirror glass left aspherical, right convex - including heated windshield washer nozzles)
- Hold assist (holds the vehicle after stopping on inclines and declines typical in road traffic for an unlimited time).
- Interior mirror, automatically dimming, frameless
- LED headlights and LED taillights with dynamic turn signals (daytime running lights, low beam, high beam, position lights, turn signals, cornering lights, all-weather lights (to reduce glare in poor visibility conditions), motorway lights, static cornering lights, maneuvering lights (illumination of the maneuvering area at the front and sides when reversing), automatic dynamic headlight range control, intersection lights (in conjunction with MMI Nav. plus), dynamic rear turn signals, brake lights, tail lights, rear license plate lights, reversing lights)
- Radio accessories: Bang & Olufsen Premium Sound System with 3D sound (surround sound playback via 15 high-performance speakers including subwoofer; 16-channel amplifier with a total output of 680 watts. The new, virtual 3D sound effect creates an immersive sound experience. This is generated by 4 speakers in the instrument panel, 2 speakers in the C-pillar, and Fraunhofer Symphoria technology. The 3D sound can be generated with a variety of sources.)
- S line interior package (S tronic) (front sport seats with manual adjustment of seat height, seat fore/aft position, seat tilt, backrest tilt and seat belt height, as well as headrests; fabric Puls/mono.pur 550-K synthetic leather; 3-spoke leather steering wheel with multifunction plus and shift paddles including leather steering wheel grips; front and rear door armrests in synthetic leather; aluminum spectrum dark decorative inlays; illuminated front door sill trims with aluminum inlays and S lettering; black fabric headliner; front center armrest; stainless steel floor mats, pedals and footrest)
- Adaptive cruise control with emergency assist (supports the driver with acceleration, braking, maintaining speed and distance, and lane keeping. The system maintains speed and distance to the vehicle ahead and provides comfortable lane keeping assistance through corrective steering interventions at speeds between 0 and 210 km/h – in such cases, the emergency assist warns the driver visually, audibly, and haptically. If the driver does not react, the system takes over control of the vehicle).
- Airbags: Front and rear side airbags with head airbag system and front interaction airbag (The so-called interaction airbag deploys between the front seats, providing protection for the driver and front passenger occupants in the event of a side impact within the system's limits. In a side collision, this largely mitigates the impact between the two front occupants and the front passenger seat when driving alone, thus reducing the risk of injury.)
- Audi phone box opt-out package
- Business package (USB ports with charging function in the rear - Audi connect Navigation & Infotainment plus - Audi phone box - Audi virtual cockpit plus - Audi Smartphone Interface - MMI Navigation plus with MMI touch - Cruise control)
- Deletion of performance/technology lettering
- Front seat heating (heats seat and backrest center section (standard seats in fabric), otherwise seat and backrest center section as well as seat side bolsters - individually adjustable in 3 stages for driver and front passenger via direct selection button on the climate control unit)
- Head-up display (On request, the speed and other driver-relevant information from optional equipment such as assistance systems and navigation, as well as warning messages, are projected into the driver's direct field of vision - The multi-color display enables a high-contrast presentation - The projection surface of the discreetly integrated head-up display in the instrument panel is adjustable in height and brightness)
- Package: Black Optics Package Plus (Black optics package with Audi rings front and rear and model designation on the rear in black. On the S model, the model designation in the radiator grille is also finished in black)
- Paint finish: Metallic
- Parking assistant with parking aid plus (Using ultrasonic sensors, the system searches for suitable parallel or perpendicular parking spaces. For perpendicular spaces, the system calculates the parking path (forwards and backwards); for parallel spaces, it calculates the entry and exit paths. The driver must accelerate, shift gears, and brake, as well as monitor the parking process. The system handles the steering. Within the system's limits, the surround view displays warnings of obstacles around the vehicle, depending on the driving path. Multi-stage parking maneuvers are supported.)



- Seat covers in leather/artificial leather mono.pur 550 combination with S embossing (seat center section of the front and both outer rear seats in leather - seat side bolsters, headrests, middle seat in the rear and front center armrest (if ordered) in artificial leather mono.pur 550)
- Telephone: Audi smartphone interface in conjunction with MMI Navigation plus with MMI touch (The Audi smartphone interface (Android Auto and Apple CarPlay) connects your smartphone to your Audi and seamlessly displays your smartphone content directly on the MMI display via USB. Navigation, telephony, music and selected third-party apps can be conveniently controlled via the MMI touchscreen as well as via voice control of your smartphone.)
- Wheel: Alloy wheels - 18 inch - 5-Y-spokes, graphite grey, polished (8.0 J x 18, tires 225/40 R 18)
- Wheel: Audi new car tire warranty (36-month term from vehicle handover to the first customer)
- Reversing camera (captures the area behind the vehicle within the system limits and displays it on the screen using dynamic display elements - the calculated driving lane is shown there - The reversing camera is discreetly integrated into the handle strip of the luggage compartment lid and is activated by engaging reverse gear or via a button in the center console)
- Seats: Rear seat backrest foldable (three-part), with center armrest (split in a 40:20:40 ratio or fully foldable; with center armrest and cupholders)
- Steering wheel: Leather steering wheel in a 3-spoke design with multifunction plus and shift paddles (The steering wheel's height and reach are manually adjustable. For convenient operation of the extensive standard and optional infotainment features, the steering wheel is equipped with twelve multifunction buttons. Shift paddles allow manual gear changes.)

Brief expert findings

Documents submitted	At the time of the inspection, the vehicle registration certificate Part 2 (title) was available, but the vehicle registration certificate Part 1 (document) was not. (Copy)
VIN comparison	The vehicle identification number (VIN) was read from the vehicle and its conformity with the submitted documents was confirmed by the undersigned during the inspection.
Inspection	The inspection conditions were sufficient for the assessment of the vehicle. Lifting equipment and/or a pit were available for examining the vehicle.
Test drive	No test drive/shunting maneuver was carried out during the inspection of the vehicle.
Engine function test	An engine test run was performed.

Value reducing factors

No.	Component group	Description
1	Equipment	Tirefit filler - Expired - Replace
2	Bonnet	Insulation lining - Damage caused by marten / rodent - Replace
3	Wheel / tyres	Alloy rim - front right side - Scratched - Loss in value
4	Front bumper	Front bumper (+ Blende links) - Scratched - Paint

Wear and tear

No.	Component group	Description
1	Body	Underbody panelling - Scratch(es) - No deduction
2	Bonnet	Bonnet - Stone chips - No deduction
3	Vehicle glazing	Windscreen - Stone chips - No deduction
4	Wheel / tyres	Wheel rims - complete set - Scratched - No deduction
5	Rear bumper	Rear bumper (Verladebereich / polierbar) - Scratch(es) - No deduction

The vehicle shows signs of wear and tear commensurate with its age and use.

Accident damages

No.	Accident
1	Side - left



Order/Scope of Order

An order was placed to prepare a sales report for the described vehicle. This report includes the following:

- Description of key vehicle information
- Documentation of equipment features
(Delivery by third-party service providers)
- Documentation of damage, defects, missing parts
- Documentation of prior damage, unrepaired prior damage, repainting
- A brief visual or functional inspection of the equipment details, if possible.
(Functional testing of driver assistance systems is not included in the scope of services!)
- a photographic documentation of the vehicle

Basis for the order

This product is based on the guidelines for vehicle returns and valuations published by Alphabet Fleet GmbH. The expert makes the specific findings in each individual case objectively, within the framework of the prescribed standards, based on their own expertise.

The vehicle inspection takes place in a fully assembled, unassembled state.

Damage or defects that can only be detected during disassembly/diagnostic work or through further investigation remain within the realm of prognostic risk. An increased risk exists due to concealed defects caused by fraudulent misrepresentation and which were not identifiable by the expert.

Damage or defects resulting from normal use or wear and tear of the vehicle will be accepted in accordance with the applicable standard.

There was no explicit identification or monetary consideration of the expected features within the product.

Features which, in their nature and extent, slightly exceed normal use but do not constitute unacceptable damage, will be documented and indicated as signs of wear, if applicable.

Damage or defects that, according to the applicable standard, can no longer be attributed to normal use or wear and tear are listed under "Value Reducing Factors" in the product description.

Depending on the product specification, a monetary ID can be provided. If this takes place, the costs can be 100% or pro rata depending on the vehicle's age and mileage.

Previous damages

Non-repaired previous damages were found at the vehicle. The necessary repair costs are listed in the expert report or if necessary, are listed in detail in a separately enclosed repair cost calculation.

Comments

Wartungshistorie gemäß Auftraggeber Informationen.

- Winterradsatz ist kein Bestandteil des Auslieferungsumfangs.



Figure 1: Diagonal front (left)



Figure 2: Diagonal front (right)



Figure 3: Diagonal rear (left)



Figure 4: Diagonal rear (right)

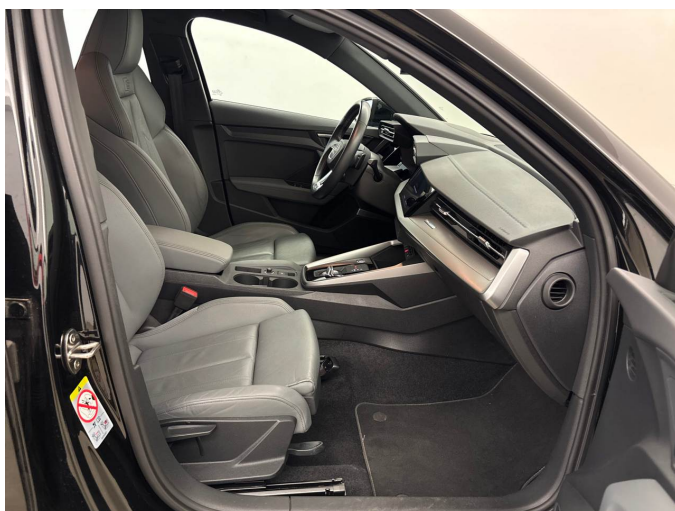


Figure 5: Interior - front

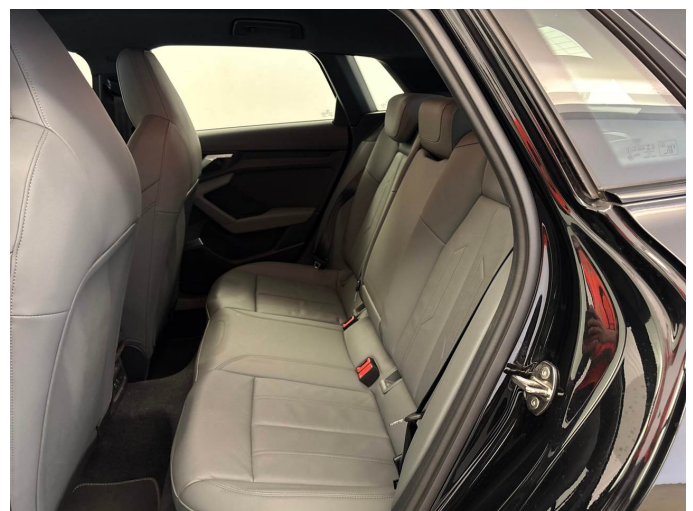


Figure 6: Interior - rear



Figure 7: Instrument cluster



Figure 8: Instrument panel



Figure 9: Interior 360° view



Figure 10: Cargo area



Figure 11: Cargo area

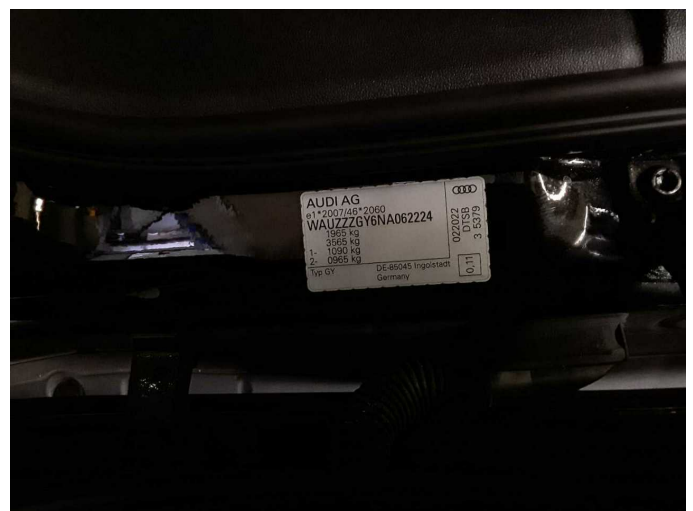


Figure 12: VIN



Figure 13: Mounted tyres



Figure 14: Documents



Figure 15: Additional tyres



Figure 16: Navigation

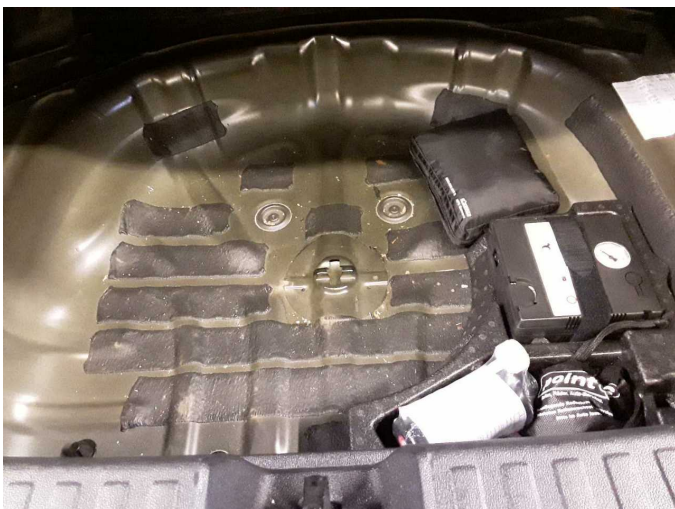


Figure 17: Misc.



Figure 18: Misc.



Figure 19: Misc.



Figure 20: Misc.



Figure 21: Misc.



Figure 22: Misc.



Figure 23: Misc.



Figure 24: Misc.



Figure 25: Misc.



Figure 26: Misc.



Figure 27: Misc.



Figure 28: Misc.

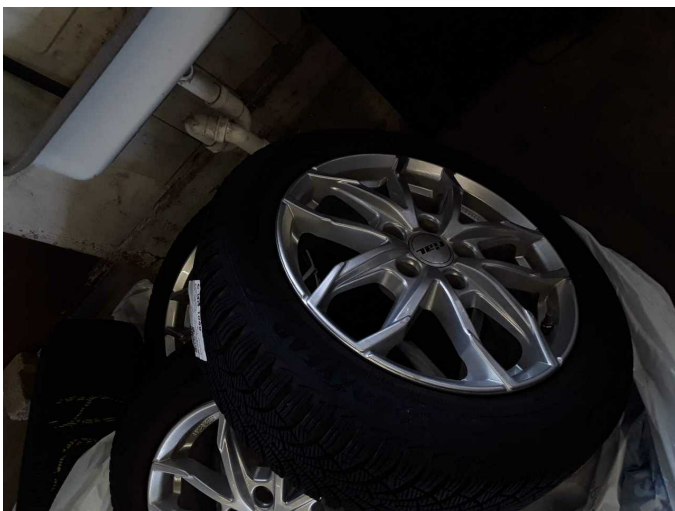


Figure 29: Misc.



Damage 1: Equipment: Tirefit filler - Expired - Replace



Damage 2: Bonnet: Insulation lining - Damage caused by marten / rodent
- Replace



Damage 3: Wheel / tyres: Alloy rim - front right side - Scratched - Loss in value



Damage 3: Wheel / tyres: Alloy rim - front right side - Scratched - Loss in value



Damage 4: Front bumper: Front bumper (+ Blende links) - Scratched - Paint



Damage 4: Front bumper: Front bumper (+ Blende links) - Scratched - Paint



Damage 4: Front bumper: Front bumper (+ Blende links) - Scratched - Paint



Damage 4: Front bumper: Front bumper (+ Blende links) - Scratched - Paint



Wear and tear 5: Rear bumper: Rear bumper (Verladebereich / polierbar) - Scratch(es) - No deduction



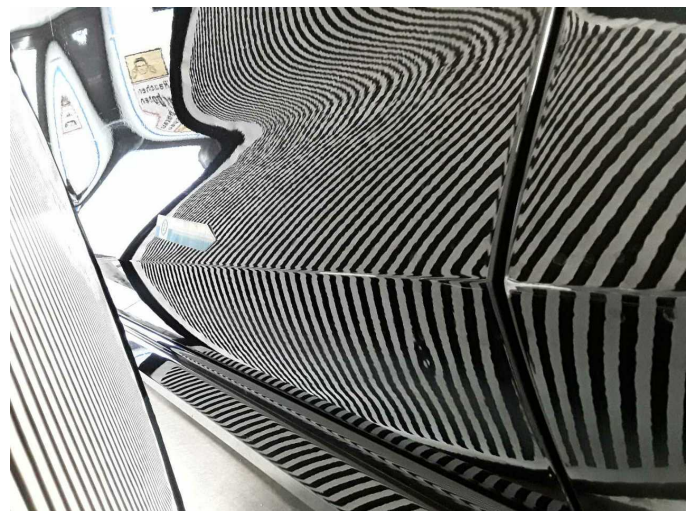
Wear and tear 5: Rear bumper: Rear bumper (Verladebereich / polierbar) - Scratch(es) - No deduction



Accident 1: Side - left



Accident 1: Side - left



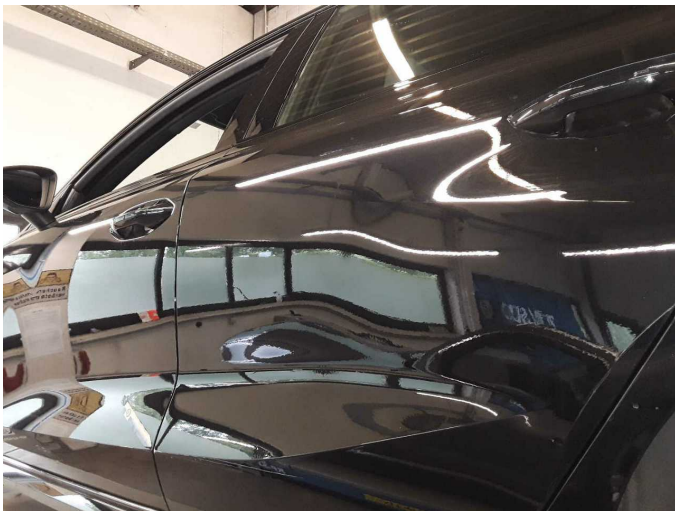
Accident 1: Side - left



Accident 1: Side - left



Accident 1: Side - left



Accident 1: Side - left



Accident 1: Side - left



Accident 1: Side - left



Wartungshistorie

(gemäß Auftraggeber Informationen)

Fahrgestellnummer: WAUZZZGY6NA062224
Hersteller / Modell: AUDI AUDI A3 35 TDI Sportback S tronic S line

Datum	KM-Stand	Beschreibung
23.03.2026	103.890	Bremsflüssigkeit; Bremsflüssigkeit ern; Motoröl b. Wartung; Ölfilter ern; Regelwartungsdienst; Wartung Sonstiges
22.08.2025	96.821	AU
26.09.2024	86.511	Bremse Sonstiges; Bremsklötze hinten; Bremsklötze vorne; Bremsscheiben hinten; Bremsscheiben vorne; Kraftstofffilter ern; Luftfiltereinsatz ern; Motoröl b. Wartung; Ölfilter ern; Regelwartungsdienst; Wartung Sonstiges
29.02.2024	58.461	Bremsflüssigkeit; Bremsflüssigkeit ern; Motoröl b. Wartung; Ölfilter ern; Regelwartungsdienst; Wartung Sonstiges
03.08.2023	28.464	Motoröl b. Wartung; Ölfilter ern; Regelwartungsdienst; Wartung Sonstiges