

## Expertise

Protocol number: 46018496  
Order No. / Reference: 26466776  
Inspection date: 16 Jun 2026

Manufacturer: Opel

Model: Insignia Sports Tourer 2.0 Diesel Aut. Business Edition

VIN: W0VZT8EP4M1030045



### Vehicle details

#### Manufacturer / Type / Model / Equipment

Opel Insignia Sports Tourer 2.0 Diesel Aut. Business Edition

**Vehicle Identification number** W0VZT8EP4M1030045

**Mileage (Read)** 117,740 km

**First registration** 9 Nov 2021

**Number of holders** 1

**Power / Engine displacement** 128 kw / 1,995 ccm

**Fuel type / Cylinder** Diesel / 4

**Gearbox / Number of gears** Automatic / 8

**Type of drive** Front drive

**Type of vehicle** Station wagon

**Colour / colour code** Chili Rot Metallic

**Doors / Seats** 5 / 5

**Upholstery type** Cloth

**Colour of upholstery** Anthracite-Black



**Vehicle details**

<b>Maintenance booklet / proof</b>	Available / complete	<b>Next maintenance in</b>	79 %
<b>Last service on / at</b>	04/2026 at 117,552 km		
<b>Key is / should be</b>	2 / 2	<b>FZG documents</b>	ZB#2 (B) was available (copy), ZB#1 (S) was not available.
		<b>Letter No.</b>	GC795169
<b>Previous damage / Accident</b>	None detectable	<b>Repainting</b>	None detectable
<b>Inspection conditions</b>	sufficient	<b>Lifting equipment / pit</b>	No
<b>Test drive</b>	Not performed	<b>Engine function test</b>	Performed
<b>Manufacturer key number/ type code number</b>	1844 / AMC 00258		
<b>Emission standard</b>	EURO6;WLTP;AP;PI/CI; M, N1 I	<b>fine dust sticker</b>	
<b>Permitted total weight</b>	2,215 kg	<b>Empty weight</b>	

**Tyres**

**Mounted tyres**

#	Tyre size	Type of tyre	Manufacturer	Tread depth
1)	225/55 R17 97Y	Summer tyres on Light alloy	Continental	7mm / 7mm
2)	225/55 R17 97Y	Summer tyres on Light alloy	Continental	4mm / 4mm

**Additional tyres**

#	Tyre size	Type of tyre	Manufacturer	Tread depth
1)	225/55 R17 101V	Winter tyres on Light alloy	Pirelli	5mm / 5mm
2)	225/55 R17 101V	Winter tyres on Light alloy	Pirelli	6mm / 6mm

**Replacement**

Typ	Tyre size	Type of tyre	Manufacturer	Tread depth
	Tirefit	Expiration date 06/2030		

**Legend: Tread depth information for the left tire is listed first, for the right tire it is listed second on the axle in the direction of travel.**



## Equipment

### Standard equipment

- Storage compartments
- Airbag: Front and rear outer head airbags
- Anti-lock braking system (ABS)
- Hill Start Assist
- third brake light
- Diesel particulate filter
- Electronic brake force distribution (EBD)
- Driver information display, 3.5"
- Front collision warning system with pedestrian detection and automatic emergency braking
- Speed controller
- rear window wiper
- Automatic climate control, two zones
- Rear headrests (3 pieces)
- LED headlights
- LED daytime running lights including LED indicators, front and LED taillights
- Center armrest, front
- Parkpilot, front and rear parking aid
- Quickheat rapid heating system
- Radio: Multimedia navigation system with 7" color touchscreen display
- Wheels: 7.5 J x 17 alloy wheels in a 5 double-spoke design
- Seat belts: Three-point seat belts in all seats
- Visibility equipment
- Lane Keeping Assist
- Bumpers painted in body color
- Traffic sign assistant
- Immobiliser
- Central locking with remote control

### Extra equipment

- Paint finish: Metallic special color
- Park & Go with digital reversing camera (digital reversing camera - reversing assistant - lane change assistant - blind spot warning in both exterior mirrors)
- Wheels: Additional set of 17" alloy winter wheels SFP

- Airbag: Front airbags (multi-stage) and side airbags, driver and front passenger
- Electrically adjustable and heated exterior mirrors for driver and passenger side
- black roof rails
- Tachometer
- Electronic Stability Program (ESP Plus)
- Electric windows front and rear
- Pedestrian protection including active hood
- luggage compartment cover
- Transmission: 8-speed automatic transmission
- Child safety lock in the rear doors, manual
- Front headrests
- Paintwork: Solid special color Snow White
- LED fog lights
- Steering column adjustable for height and reach
- Illuminated makeup mirrors in both sun visors
- Electric parking brake
- Upholstery: Billy fabric, black
- Radio: Digital radio reception DAB+
- Tire repair kit
- Tire pressure gauge
- Rear seat backrest folds forward in a 60:40 split
- Power steering
- safety net
- Seats: Ergonomic active seat (AGR) driver
- Start/Stop System
- Traction Control (TC) Plus
- Pre-installation for child seat mounting system "ISOFIX"
- Thermal insulation glazing, green tinted
- Second folding ignition key

- Package: Easy-Access (Keyless locking and starting system (Keyless Open & Start) - Sensor-controlled tailgate, electric - Loading sill protection, stainless steel)
- Radio: Multimedia Navi Pro with 8" color touchscreen display



## Brief expert findings

Documents submitted	At the time of the inspection, the vehicle registration certificate Part 2 (title) was available, but the vehicle registration certificate Part 1 (document) was not. (Copy)
VIN comparison	The vehicle identification number (VIN) was read from the vehicle and its conformity with the submitted documents was confirmed by the undersigned during the inspection.
Inspection	The inspection conditions were sufficient for the assessment of the vehicle. No lifting equipment or pit was available for inspecting the vehicle. Therefore, inspection of the vehicle's underside was only possible to a limited extent.
Test drive	No test drive/shunting maneuver was carried out during the inspection of the vehicle.
Engine function test	An engine test run was performed.

## Value reducing factors

No.	Component group	Description
1	Front bumper	Front bumper - Malposition - Set / adjust
2	Door - front left side	Door handle - outside - Scratch(es) - Smart repair
3	Door - front left side	Door edge - Scratch(es) - Smart repair
4	Door - rear right side	Door edge - Scratch(es) - Smart repair
5	Side panel - rear right side	Side panel - Scratch(es) - Paint
6	2nd wheel set	1 alloy rim - Scratch(es) - Replace
7	Door - rear left side	Door - Dent / paintcoat damage - Repair and paint
8	Rear bumper	Rear bumper - Scratch(es) - Paint
9	Front bumper	Front bumper - Scratch(es) - Repair and paint

## Wear and tear

No.	Component group	Description
1	Vehicle glazing	Windscreen - Stone chips - No deduction
2	Bonnet	Bonnet - Stone chips - No deduction
3	Side panel - rear left side	Sill - Scratch(es) - No deduction
4	Door - front right side	Door - Dent / paintcoat damage - No deduction

The vehicle shows signs of wear and tear commensurate with its age and use.

## Order/Scope of Order

An order was placed to prepare a sales report for the described vehicle. This report includes the following:

- Description of key vehicle information
- Documentation of equipment features  
(*Delivery by third-party service providers*)
- Documentation of damage, defects, missing parts
- Documentation of prior damage, unrepaired prior damage, repainting
- A brief visual or functional inspection of the equipment details, if possible.  
(*Functional testing of driver assistance systems is not included in the scope of services!*)
- a photographic documentation of the vehicle



## Basis for the order

This product is based on the guidelines for vehicle returns and valuations published by Alphabet Fleet GmbH. The expert makes the specific findings in each individual case objectively, within the framework of the prescribed standards, based on their own expertise.

The vehicle inspection takes place in a fully assembled, unassembled state.

Damage or defects that can only be detected during disassembly/diagnostic work or through further investigation remain within the realm of prognostic risk. An increased risk exists due to concealed defects caused by fraudulent misrepresentation and which were not identifiable by the expert.

Damage or defects resulting from normal use or wear and tear of the vehicle will be accepted in accordance with the applicable standard.

There was no explicit identification or monetary consideration of the expected features within the product.

Features which, in their nature and extent, slightly exceed normal use but do not constitute unacceptable damage, will be documented and indicated as signs of wear, if applicable.

Damage or defects that, according to the applicable standard, can no longer be attributed to normal use or wear and tear are listed under "Value Reducing Factors" in the product description.

Depending on the product specification, a monetary ID can be provided. If this takes place, the costs can be 100% d or pro rata depending on the vehicle's age and mileage.

## Previous damages

No apparent prior damage that had been repaired could be found on the vehicle.



Figure 1: Diagonal front (left)



Figure 2: Diagonal front (right)



Figure 3: Diagonal rear (left)



Figure 4: Diagonal rear (right)



Figure 5: Interior - front



Figure 6: Interior - rear



Figure 7: Instrument cluster



Figure 8: Instrument panel



Figure 9: Interior 360° view



Figure 10: Cargo area



Figure 11: VIN

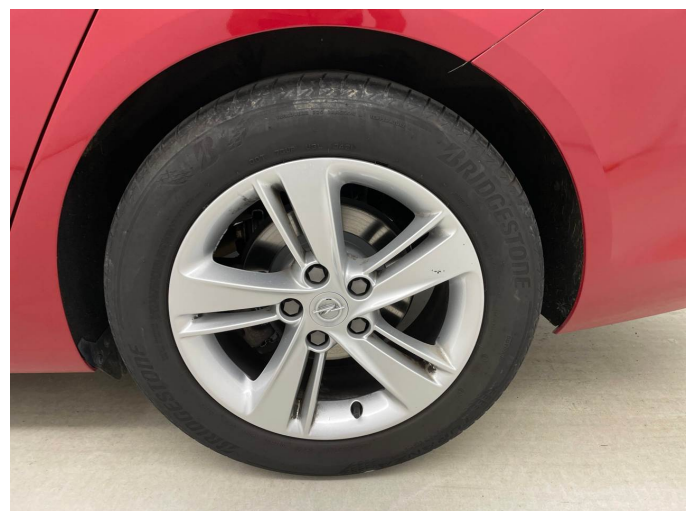


Figure 12: Mounted tyres

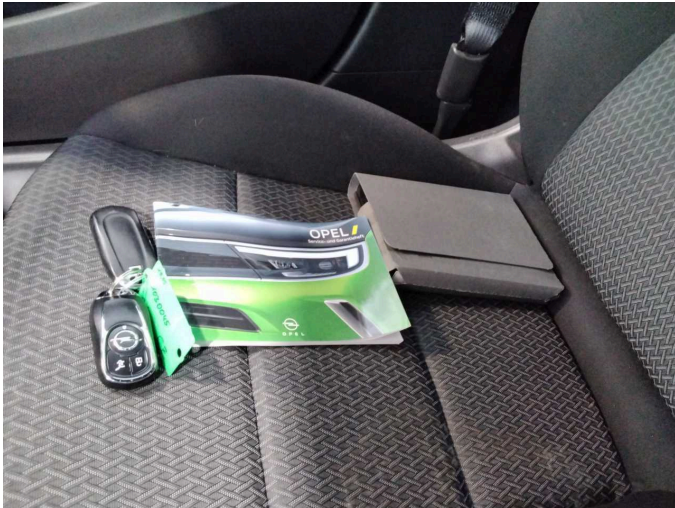


Figure 13: Documents

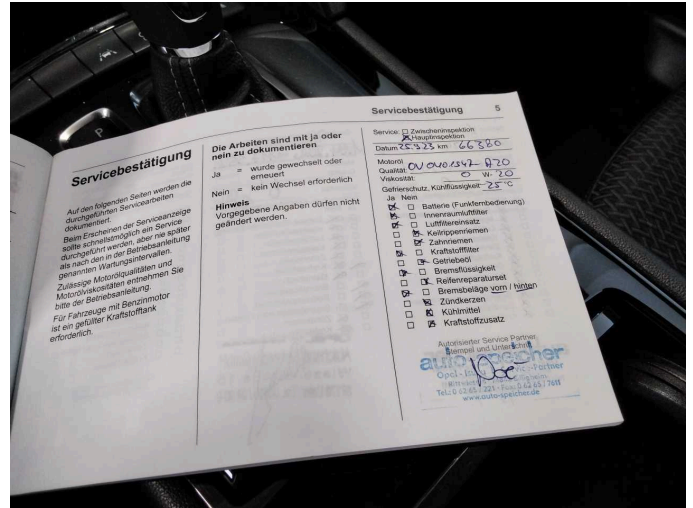


Figure 14: Documents

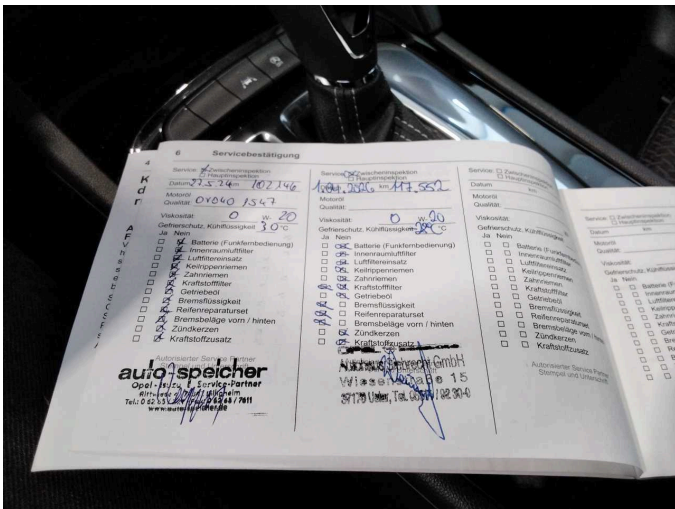


Figure 15: Documents



Figure 16: Additional tyres



Figure 17: Additional tyres

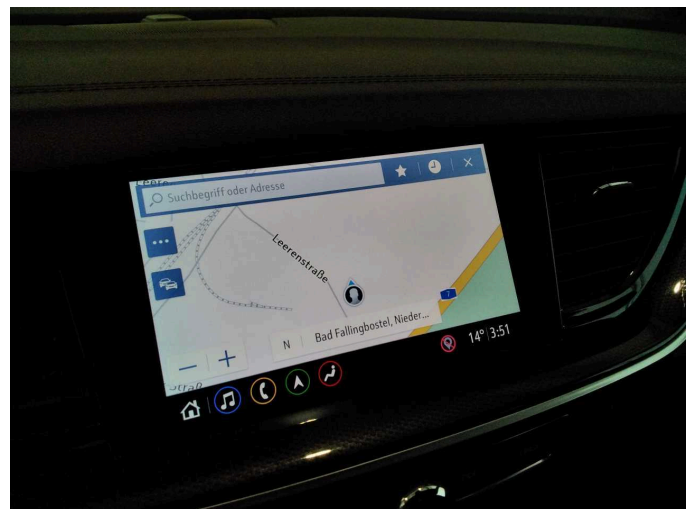


Figure 18: Navigation

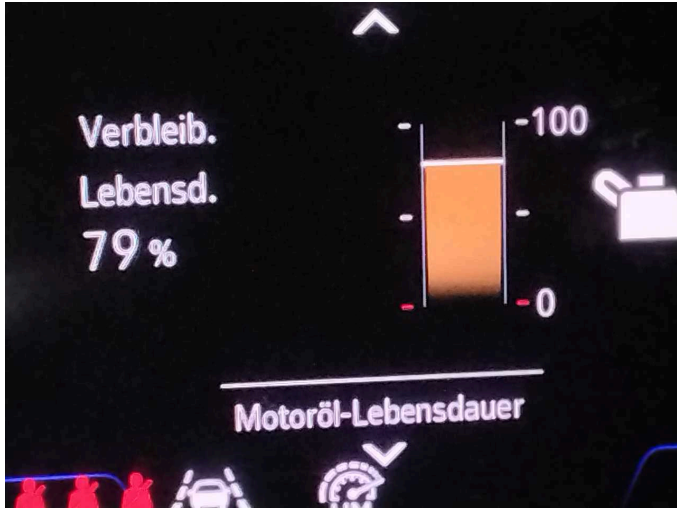


Figure 19: Misc.



Figure 20: Misc.



Figure 21: Misc.



Figure 22: Misc.



Figure 23: Misc.



Figure 24: Misc.



Figure 25: Misc.



Figure 26: Misc.



Figure 27: Misc.



Figure 28: Misc.



Figure 29: Misc.



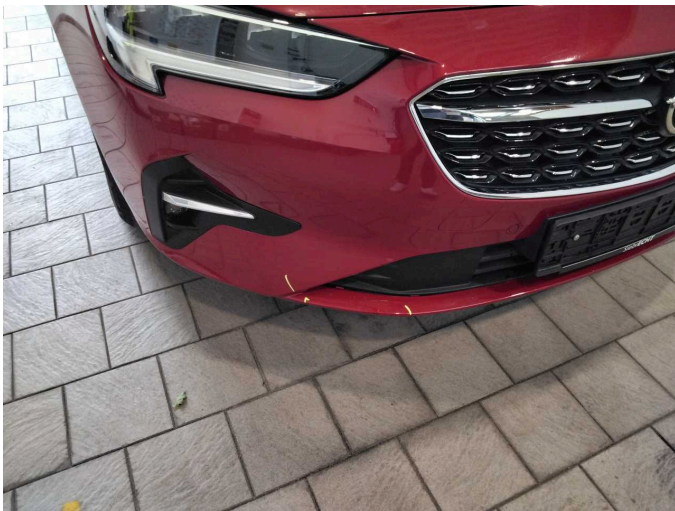
Figure 30: Misc.



**Damage 1:** Front bumper: Front bumper - Malposition - Set / adjust



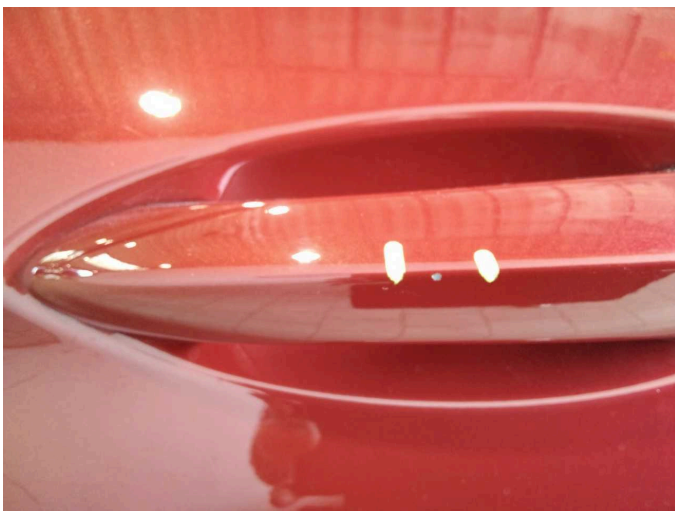
**Damage 1:** Front bumper: Front bumper - Malposition - Set / adjust



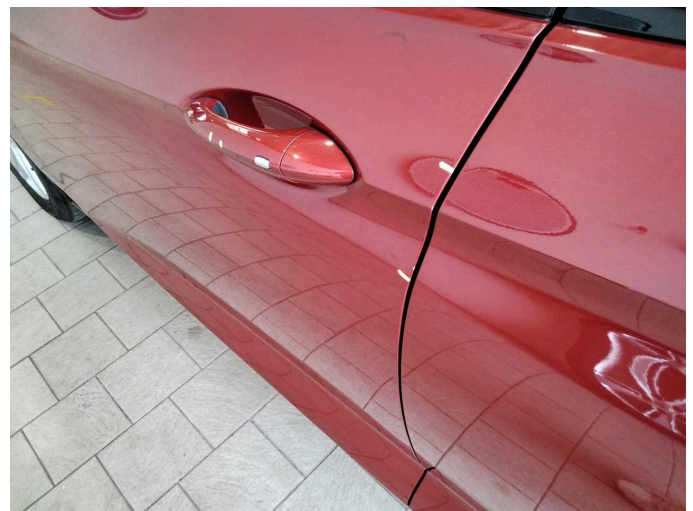
**Damage 1:** Front bumper: Front bumper - Malposition - Set / adjust



**Damage 2:** Door - front left side: Door handle - outside - Scratch(es) - Smart repair



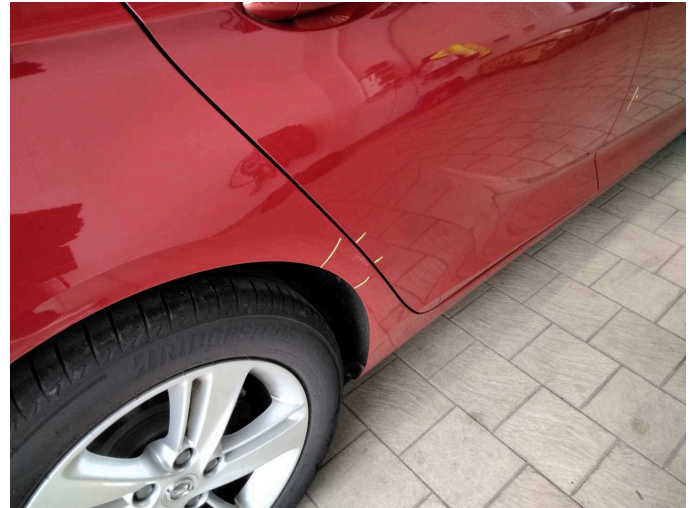
**Damage 2:** Door - front left side: Door handle - outside - Scratch(es) - Smart repair



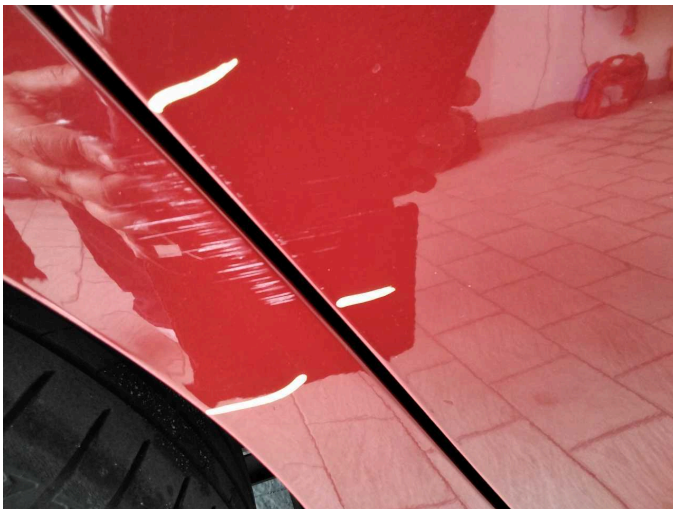
**Damage 3:** Door - front left side: Door edge - Scratch(es) - Smart repair



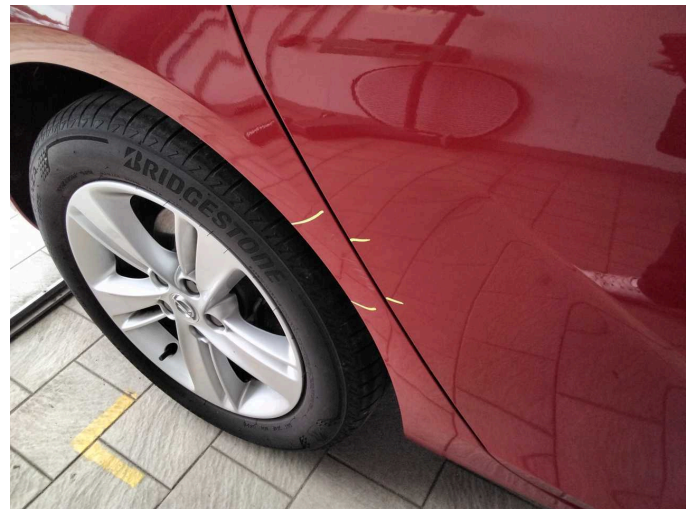
**Damage 3:** Door - front left side: Door edge - Scratch(es) - Smart repair



**Damage 4:** Door - rear right side: Door edge - Scratch(es) - Smart repair



**Damage 4:** Door - rear right side: Door edge - Scratch(es) - Smart repair



**Damage 5:** Side panel - rear right side: Side panel - Scratch(es) - Paint



**Damage 5:** Side panel - rear right side: Side panel - Scratch(es) - Paint



**Damage 6:** 2nd wheel set: 1 alloy rim - Scratch(es) - Replace



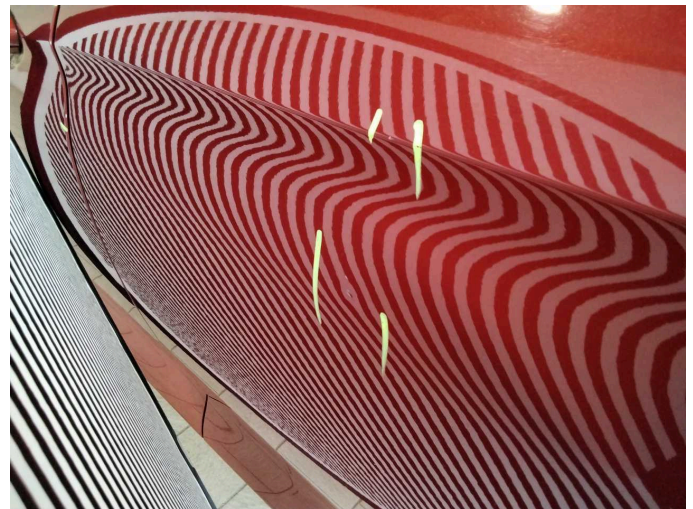
**Damage 6:** 2nd wheel set: 1 alloy rim - Scratch(es) - Replace



**Damage 7:** Door - rear left side: Door - Dent / paintcoat damage - Repair and paint



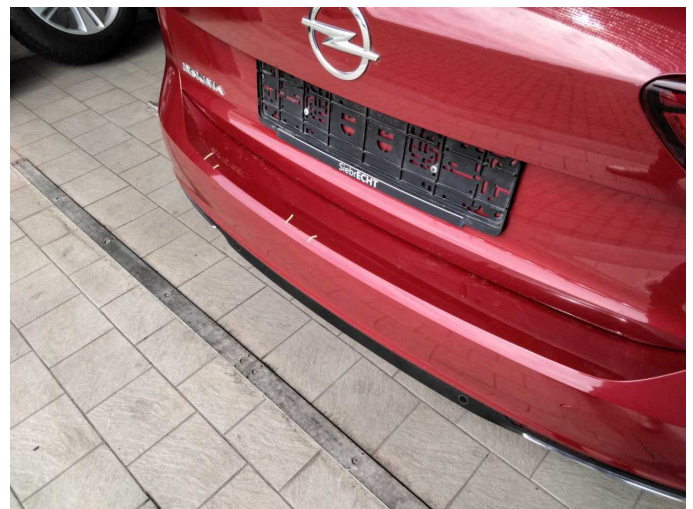
**Damage 7:** Door - rear left side: Door - Dent / paintcoat damage - Repair and paint



**Damage 7:** Door - rear left side: Door - Dent / paintcoat damage - Repair and paint



**Damage 7:** Door - rear left side: Door - Dent / paintcoat damage - Repair and paint



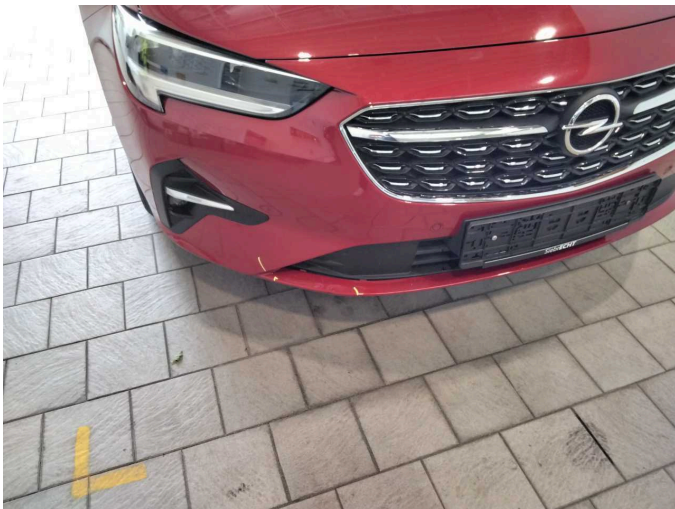
**Damage 8:** Rear bumper: Rear bumper - Scratch(es) - Paint



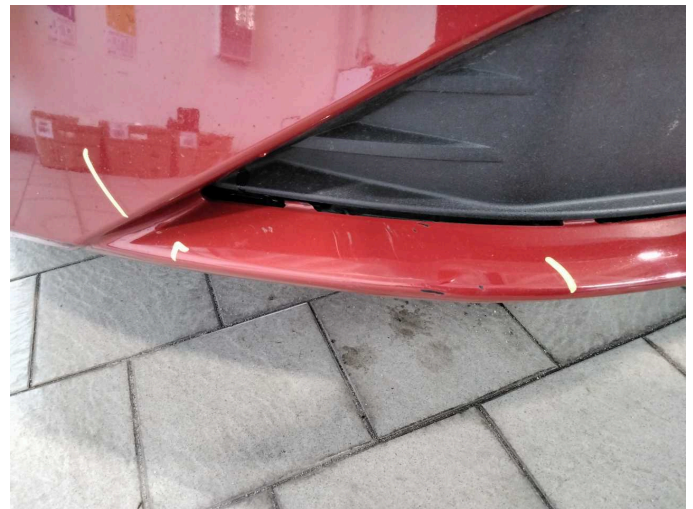
**Damage 8:** Rear bumper: Rear bumper - Scratch(es) - Paint



**Damage 8:** Rear bumper: Rear bumper - Scratch(es) - Paint



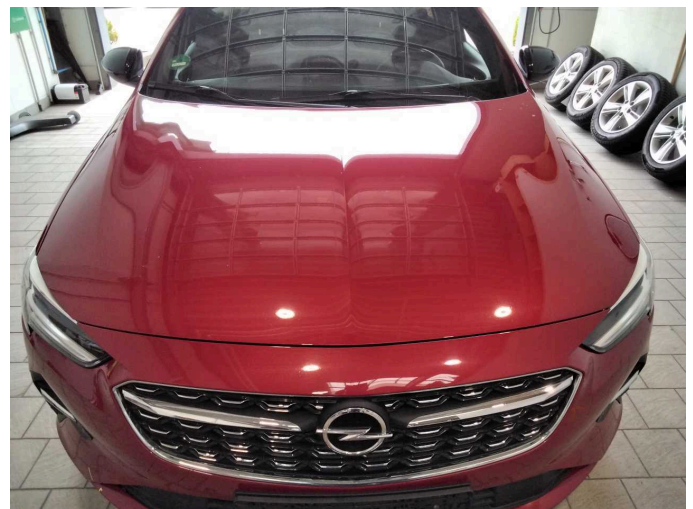
**Damage 9:** Front bumper: Front bumper - Scratch(es) - Repair and paint



**Damage 9:** Front bumper: Front bumper - Scratch(es) - Repair and paint



**Wear and tear 1:** Vehicle glazing: Windscreen - Stone chips - No deduction



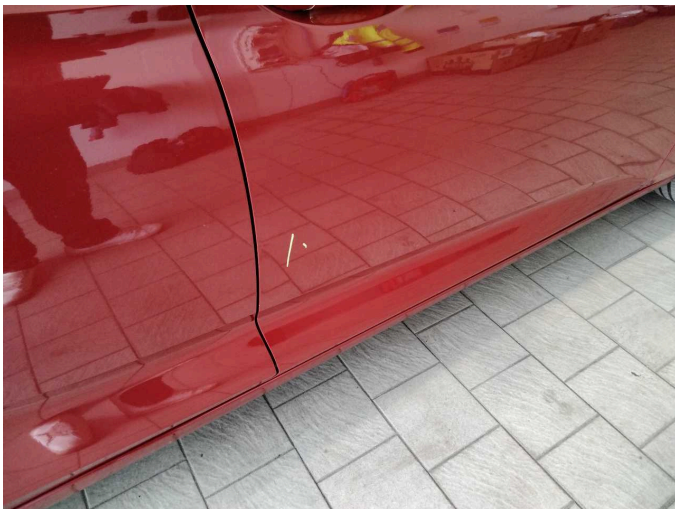
**Wear and tear 2:** Bonnet: Bonnet - Stone chips - No deduction



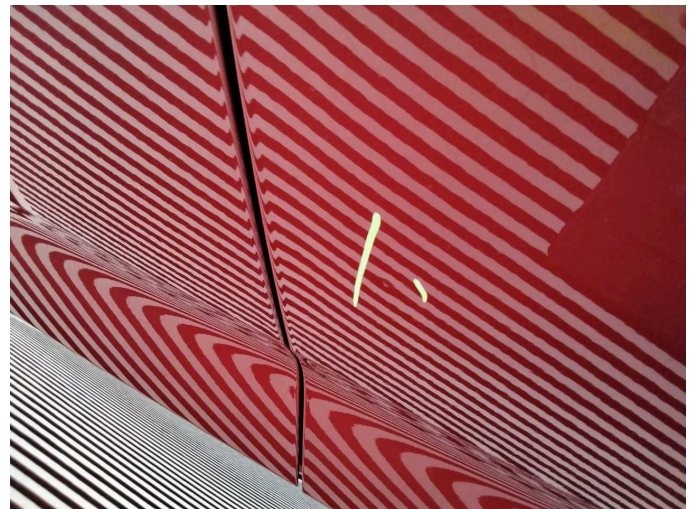
**Wear and tear 3:** Side panel - rear left side: Sill - Scratch(es) - No deduction



**Wear and tear 3:** Side panel - rear left side: Sill - Scratch(es) - No deduction



**Wear and tear 4:** Door - front right side: Door - Dent / paintcoat damage - No deduction



**Wear and tear 4:** Door - front right side: Door - Dent / paintcoat damage - No deduction